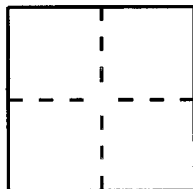


CORNER RECORD

Document Number 2010-0787 A

City of UNINC. COUNTY (COWAN HEIGHTS) County of ORANGE, California

Brief Legal Description SURVEY POINT ALONG CRAWFORD CANYON ROAD. @ ADDRESS #10572.



CORNER TYPE

Government Corner ☐ Control ☐
 Meander ☐ Property ☐
 Rancho ☐ Other ☒
 Date of Survey JULY 6, 2009

COORDINATES (Optional)

N. _____
 E. _____
 Zone _____ NAD27 ☐ NAD83 ☐
 NAD83 Epoch _____
 Elev. _____
 Vert. Datum: NGV29 ☐ NAVD88 ☐
 Meas. Units: Metric ☐ Imperial ☐
 U.S. Survey Feet ☒

Corner — Left as found ☒ Found and tagged ☐ Established ☐ Reestablished ☐ Rebuilt ☐

Identification and type of corner found; Evidence used to identify or procedure used to establish or reestablish the corner:
 (PRE CONSTRUCTION CORNER RECORD) THE PURPOSE OF THIS CORNER RECORD
 IS TO PERPETUATE THE POSITIONS OF FOUND MONUMENTS. NO ATTEMPT WAS
 MADE TO DETERMINE THE VALIDITY OF THE MONUMENTS OR THEIR PROPER
 LOCATIONS IN RELATION TO LEGAL BOUNDARY LINES IN THE AREA.

A description of the physical condition of the monument as found and as set or reset: _____
 MONUMENT WAS FOUND AS NOTED ON PAGE 2 OF THIS CORNER RECORD.

SURVEYOR'S STATEMENT

This Corner Record was prepared by me or under my direction in conformance with
 the Land Surveyors' Act on MARCH 30, 2010

Signed James R. Estep (L.S.) or R.C.E. No. 8106



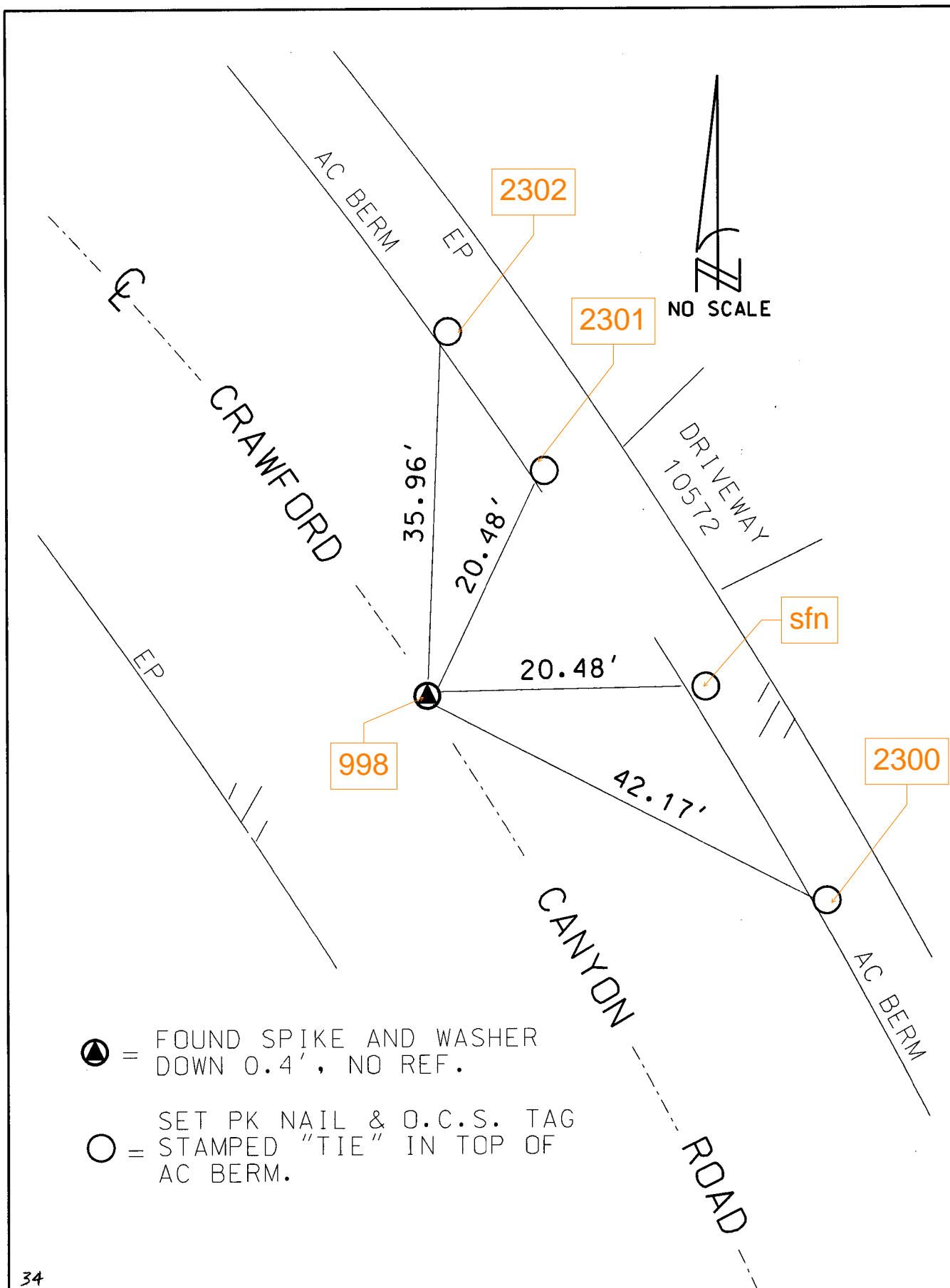
COUNTY SURVEYOR'S STATEMENT

This Corner Record was received MAR 30 2010
 and examined and filed APR 26 2010

Signed [Signature] (L.S.) or R.C.E. No. 7212
 Title DEPUTY COUNTY SURVEYOR



County Surveyor's Comment _____



▲ = FOUND SPIKE AND WASHER
DOWN 0.4', NO REF.

○ = SET PK NAIL & O.C.S. TAG
STAMPED "TIE" IN TOP OF
AC BERM.