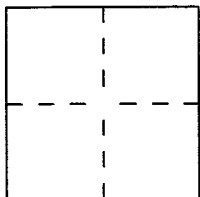


CORNER RECORD

Document Number 2012-2269City of Uninc. County (Panorama Heights) County of Orange, CaliforniaBrief Legal Description Centerline of Barrett Lane & Fairhaven Ext.

CORNER TYPE

Government Corner ☐ Control ☐
Meander ☐ Property ☐
Rancho ☐ Other ☒

Date of Survey JUNE 21, 2012

COORDINATES (Optional)

N. _____
E. _____
Zone _____ NAD27 ☐ NAD83 ☐
NAD83 Epoch _____
Elev. _____
Vert. Datum: NGVD29 ☐ NAVD88 ☐
Meas. Units: Metric ☐ Imperial ☐
U.S. Survey foot ☐

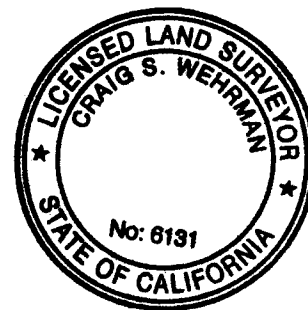
Corner — Left as found ☒ Found and tagged ☐ Established ☐ Reestablished ☐ Rebuilt ☐Identification and type of corner found; Evidence used to identify or procedure used to establish or reestablish the corner:
SEE REVERSEA description of the physical condition of the monument as found and as set or reset: _____
SEE REVERSE

SURVEYOR'S STATEMENT

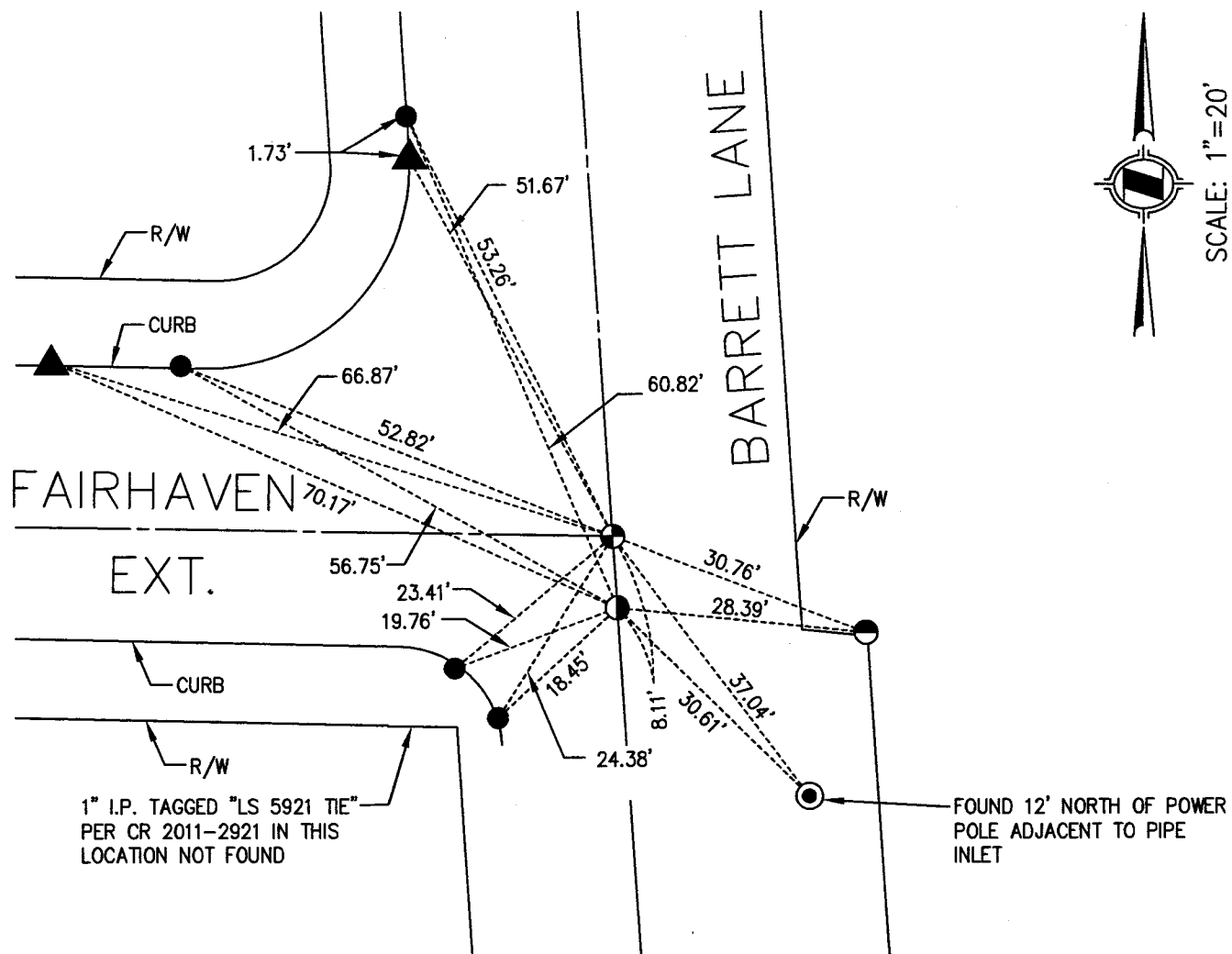
This Corner Record was prepared by me or under my direction in conformance with
the Land Surveyors Act on JUNE 25, 2012Signed [Signature] L.S. or R.C.E. No. 7177

COUNTY SURVEYOR'S STATEMENT

This Corner Record was received _____

JUL 10 2012and examined and filed AUG 07 2012Signed [Signature] L.S. or R.C.E. No. 6131Title [Signature]

County Surveyor's Comment _____

MONUMENT NOTES

- FOUND PUNCHED SPIKE WITH O.C.S. TAG STAMPED "R.C.E. 6978" PER CR 2011-2921, DOWN 0.5'
- FOUND SPIKE WASHER PER CR 2011-2921, DOWN 0.4'
- FOUND 1" I.P. AND TAG STAMPED "L.S. 2681" PER CR 2011-2921, DOWN 0.4'
- FOUND 1" I.P. TAGGED "L.S. 5921 TIE" PER CR 2011-2921, FLUSH.
- FOUND L&T WITH O.C.S. TIE TAG IN TOP OF CURB PER CR 2011-2921
- ▲ FOUND LEAD & NAIL IN TOP OF CURB CR 2011-2921

SURVEYOR'S NOTES

ALL DATA SHOWN HEREON ARE RECORD AND MEASURED DATA PER CR 2011-2921 UNLESS OTHERWISE NOTED.

THESE TIES ARE FOR THE PURPOSE OF REPLACING MONUMENTATION DESTROYED DURING CONSTRUCTION IN THE AREA.