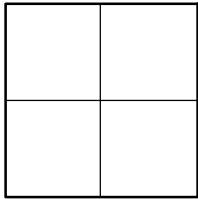


CORNER RECORD

Agency Index _____

Document Number _____

CR 2021-2777

City of UNINCORPORATED TERRITORYCounty of ORANGE, CaliforniaBrief Legal Description ALONG BRAE GLEN: AT THE W'LY TERMINUS AND CUL-DE-SAC RADIUS POINT, +/- 282' W'LY OF CRAWFORD CANYON RD**CORNER TYPE**

- ☐ Government Corner ☐ Control
☐ Meander ☐ Property
☐ Rancho ☒ Other

Date of Survey 08-19-2021**COORDINATES (Optional)**

N. _____ E. _____

Elevation _____

Units _____ Metric ☐ U.S. Survey Foot ☒

Horizontal Datum _____

Zone _____ Epoch Date _____

Vertical Datum _____

☐ Complies with Public Resources Code §§8801-8819☐ Complies with Public Resources Code §§8890-8902PLS Act Ref: ☐ 8765(d)☒ 8771☐ 8773☐ Other: _____Corner/ ☒ Left as found☐ Established☐ Rebuilt☒ Pre-ConstructionMonument: ☐ Found and tagged☐ Reestablished☒ Referenced☐ Post-Construction

Narrative of corner identified and monument as found, set, reset, replaced, or removed:

☒ See sheet #2 for description (s):

NO CLAIM IS MADE AS TO THE RELATIONSHIP OF THE POINTS SHOWN HEREON TO TRUE BOUNDARY LOCATIONS. RIGHT OF WAY, PARCEL, OR LOT LINES, OR ANY OTHER DATA RELATED TO DELINEATION OF PROPERTY RIGHTS ARE DISPLAYED FOR GRAPHICAL REPRESENTATION ONLY.

BEARINGS SHOWN HEREON ARE ASSUMED AND ARE DISPLAYED FOR ANGULAR RELATIONSHIP ONLY.

MEASURED DISTANCES SHOWN HEREON ARE GRID DISTANCES, DERIVED BY INVERSE FROM POSITIONS ESTABLISHED BY A FULLY REDUNDANT LEAST SQUARES NETWORK ADJUSTMENT. ALL POINTS WERE EITHER TRAVERSED THROUGH OR DOUBLE DETERMINED, PER CHAPTERS 5 & 11 OF THE OC SURVEY STANDARDS MANUAL. TO OBTAIN A GROUND DISTANCE, MULTIPLY A GRID DISTANCE BY 1.00002671.

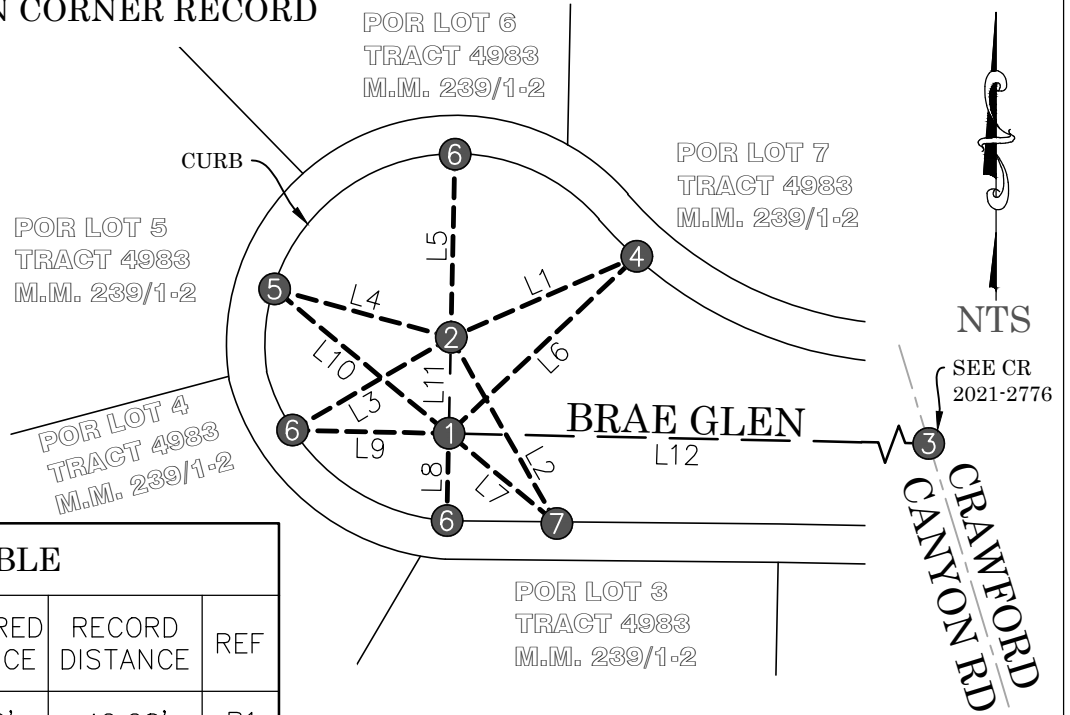
RECORD DISTANCES SHOWN HEREON ARE AS THEY APPEAR ON THE DOCUMENT OF RECORD. DISTANCES MAY BE EITHER GRID OR GROUND, AS PER SAID RECORD. ALL DISTANCES WERE FIELD VERIFIED USING ELECTRONIC DISTANCE MEASUREMENTS.

SURVEYOR'S STATEMENT

This Corner Record was prepared by me or under my direction in conformance with

the Professional Land Surveyors' Act on 1-19-2022Signed Jesom Moreno P.L.S. or R.C.E. No. 8478**COUNTY SURVEYOR'S STATEMENT**This Corner Record was received JANUARY 19, 2022and examined and filed JANUARY 24, 2022Signed Kevin R. Hills P.L.S. or R.C.E. No. 6617Title COUNTY SURVEYOR

County Surveyor's Comment _____

PRE-CONSTRUCTION CORNER RECORD**LINE TABLE**

LINE #	MEASURED BEARING	MEASURED DISTANCE	RECORD DISTANCE	REF
L1	N66°28'21"E	42.22'	42.28'	R1
L2	N29°38'12"W	44.60'	44.62'	R1
L3	N59°42'53"E	38.29'	N/A	N/A
L4	N74°42'11"W	38.14'	38.08'	R1
L5	N01°14'07"E	38.13'	N/A	N/A
L6	N46°43'51"E	53.77'	53.83'	R1
L7	N50°10'38"W	29.30'	29.33'	R1
L8	N01°15'14"E	18.19'	N/A	N/A
L9	N88°46'39"W	32.62'	N/A	N/A
L10	N50°23'53"W	47.17'	47.14'	R1
L11	N01°16'48"E	20.01'	20.00'	R1
L12	N88°47'43"W	282.02'	282.00'	R2

LEGEND:

FOUND

LEGEND:

- - - REF LINE 1: APPARENT CENTERLINE
 - - - REF LINE 2: TIE LINES
 — — — REF LINE 3: MEAS BETWEEN MONUMENTS
 OCS ORANGE COUNTY SURVEYOR

RECORD REFERENCES:

R1 OCS A/4-9/873-875 (PG 873)
 R2 TRACT 4983, MM 239/1-2

MONUMENT NOTES:

- ① FD MON WELL W/ 2" BR DISK, NO STAMPING, PER R1 & R2, DN 1.2'
- ② FD CONC NAIL, NO TAG, NO REF, DN 0.2' IN AC, FITS POSITION OF SPIKE & WSHR PER R1 & R2
- ③ FD MON WELL W/ 1" IP & 3/4" BR TAG (ILLEG, ACCEPTED AS TAG "LS 2911"), PER R1 & R4, DN 1.3'
- ④ FD LEAD & 3/4" BR TAG STMPD "OCS TIE" ON TOP OF CONC CURB, NO REF; FITS POSITION OF CHIS "+" PER R1
- ⑤ FD LEAD & HOLE, TACK & TAG MISSING, ON TOP OF CONC CURB, NO REF; FITS POSITION OF CHIS "+" PER R1
- ⑥ FD LEAD & 3/4" BR TAG STMPD "OCS TIE" ON TOP OF CONC CURB, NO REF
- ⑦ FD CHISELED "+" ON TOP OF CONC CURB, PER R1