

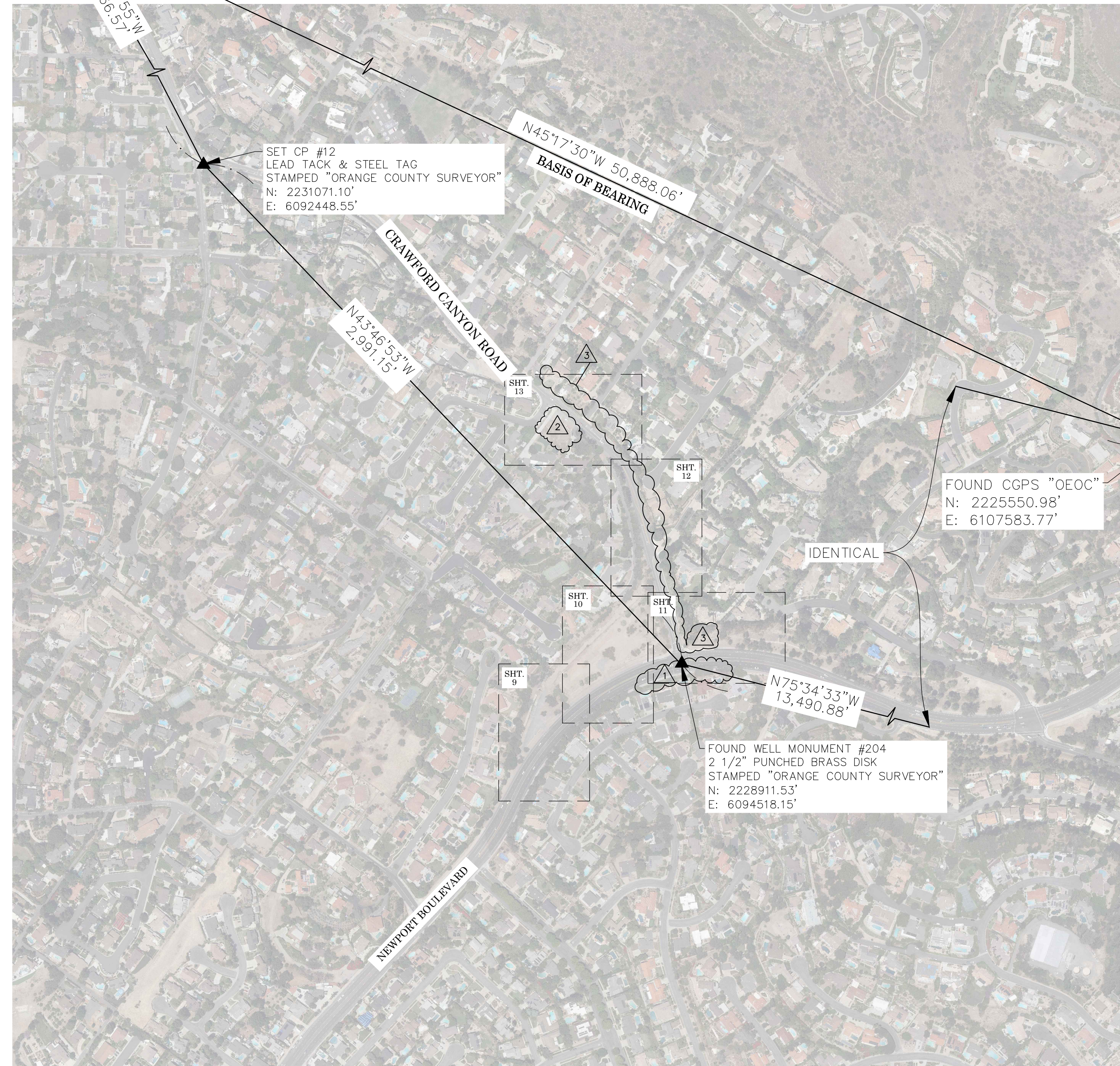
FOUND CGPS "CCCS"
N: 2261350.67'
E: 6071417.81'

[illegible]

A circular professional seal for Michael Kubisty, a Licensed Land Surveyor in the State of California. The seal features the text "LICENSED LAND SURVEYOR" at the top, "MICHAEL KUBISTY" in the center, and "STATE OF CALIFORNIA" at the bottom, separated by two stars. The number "No. 8036" is printed below the central name.

A circular professional seal for Michael LaFontaine, a Licensed Land Surveyor in the State of California. The seal features the text "LICENSED LAND SURVEYOR" at the top, "MICHAEL LAFONTAINE" in the center, "No. 8970" below the name, and "STATE OF CALIFORNIA" at the bottom, flanked by two stars.

N.T.S.



THE BASIS OF BEARRINGS FOR THIS SURVEY IS BASED ON THE CALIFORNIA COORDINATE SYSTEM (CCS83), ZONE VI, NAD 83, OCS (2017.50) EPOCH ADJUSTMENT, AS DETERMINED LOCALLY BY A LINE BETWEEN CONTINUOUS GLOBAL POSITIONING STATIONS COPS STATIONS (CCCS) AND (OECC) BEING NORTH 45°17'30" WEST AS DERIVED FROM THE COORDINATES PUBLISHED BY THE CALIFORNIA SPATIAL REFERENCE CENTER (CSRC) ALONG WITH DATA SHEETS ON FILE IN THE OFFICE OF THE ORANGE COUNTY SURVEYOR.

COORDINATES SHOWN ARE BASED ON THE CALIFORNIA COORDINATE SYSTEM (CCS83), ZONE VI, NAD 83, OCS (2017.50) EPOCH ADJUSTMENT.

ALL DISTANCES SHOWN ARE GRID, UNLESS OTHERWISE NOTED. TO OBTAIN GROUND DISTANCES MULTIPLY GRID BY A COMBINED FACTOR OF 1.000029521.

THIS COMBINATION FACTOR WAS HELD AT POINT NUMBER
#106 N:2228939.64', E:6094442.27', ELEVATION: 383.26'
ALL DISTANCES ARE BASED ON THE U.S. SURVEY FOOT.

O.C.S. BM. #3A-87-71 ELEV. = 331.822' YEAR LEVELED 1991

NGVD 1988 (O.C.S. 1995 ADJUSTMENT)

DESCRIPTION: FOUND 3 1/4" OCS ALUMINUM BENCHMARK DISK STAMPED "3A-87-71", SET IN THE NORTHWEST CORNER OF A 4.5 FT. BY 25 FT. CONCRETE CATCH BASIN. LOCATED IN THE SOUTHEAST CORNER OF THE INTERSECTION OF HYPE PARK DRIVE AND NEWPORT BOULEVARD.

THE BASIS OF STATIONING FOR THE CENTERLINE OF CRAWFORD CANYON ROAD SHOWN HEREON WAS ESTABLISHED BY HOLDING 19+29.32 AT THE CENTERLINE INTERSECTION OF CRAWFORD CANYON ROAD AND NEWPORT AVE PER RECORD DRAWING NO. 078PW-RD560019 DATED 01/18/1990 AND INCREASING N'WLY THEREFROM.

THE BASIS OF STATIONING FOR THE CENTERLINE OF NEWPORT AVE SHOWN HEREON WAS ESTABLISHED BY HOLDING 100+00 (ASSUMED) AT THE CENTERLINE INTERSECTION OF NEWPORT AVE & INCREASING N'LY THEREFROM.

THE SURVEY INFORMATION SHOWN HEREON IS TO BE USED FOR TOPOGRAPHIC
RELATIONSHIPS ONLY AND IS NOT INTENDED FOR LAND ACQUISITION OR
BOUNDARY PURPOSES.
PARCELS SHOWN WITHOUT BEARING AND DISTANCES ARE FOR GRAPHICAL
PURPOSES AND ARE PENDING RECEIPT OF TITLE REPORT.

SHEET	NO.	DESCRIPTION
SHEET	1	TITLE SHEET
SHEET	2-8	BOUNDARY MAP
SHEETS	9-13	TOPOGRAPHIC MAP

THE PURPOSE OF THE SURVEY IS TO PROVIDE A TOPOGRAPHIC MAP AND RIGHT OF WAY ESTABLISHMENT FOR THESE PORTIONS OF THE CRAWFORD CANYON ROAD AND NEWPORT AVENUE.

3	2/28/23	ADDITIONAL TOPOGRAPHY AND RIGHT OF WAY ESTABLISHMENT ON EASTSIDE OF CRAWFORD CANYON FROM NEWPORT BOULEVARD TO COUNTRY HAVEN LANE	COUNTY OF ORANGE OC PUBLIC WORKS OC SURVEY/FIELD SERVICES/BOUNDARY ANALYSIS & MAPPING			
			CRAWFORD CANYON ROAD SIDEWALK EXTENSION PHASE II			
2	7/18/22	TOPOGRAPHIC MAP UPDATED AT 10711 CRAWFORD CANYON ROAD DUE TO NEW HOME RENOVATION (SHEET #13)	TITLE SHEET			
			PROJECT LIMITS: FROM NEWPORT BLVD. TO EL ROY DR. ALONG CRAWFORD CANYON RD. AND FROM 240' NELY OF HYDE DR. TO CRAWFORD CANYON RD. ALONG NEWPORT BLVD.			
1	9/01/21	ADDITIONAL RIGHT OF WAY AND EASEMENT ESTABLISHMENT SLY OF THE CENTERLINE OF NEWPORT BOULEVARD	DATE OF SURVEY: 01/19/2023		BY: J. RUSSO & PARTY BY: R. CASANAVE BY: M. KUBISTY, PLS BY: J. RUSSO & PARTY	SHEET NO. 1 of 13
			MAPPING			
MARK		DATE	ITEM			
REVISIONS						
SCALE: N.T.S.			W.O. #EQ198170		FILE #1920PW-IN0029	
FILE: CRAWFORD CANYON ROAD, SIDEWALK EXTENSION, TOPO. 2023.DWG						

13

U.S. *Survey*
Foot

OC Public Works
OC Survey/Field Services
Boundary Analysis & Mapping

TOPOGRAPHIC MAPPING PROJECT

ESTABLISHMENT NOTES

- A** ESTABLISHED THE CENTERLINE OF CRAWFORD CANYON ROAD BY HOLDING A LINE BETWEEN MONUMENTS **6** AND **9**
- B** ESTABLISHED THE CENTERLINE OF NEWPORT BLVD. BY HOLDING RECORD ANGLES, DISTANCES & CURVATURE INFORMATION PER (R1) BETWEEN MONUMENTS **1**, **2**, **3**, **4**, **5**, **6**, **13** AND **14**
- C** ESTABLISHED THE CENTERLINE INTERSECTION OF NEWPORT BLVD. AND OLD CRAWFORD ROAD BY HOLDING RECORD ANGLE, DISTANCE, AND CURVATURE INFORMATION NE'LY FROM MONUMENT **4** ALONG LINE ESTABLISHMENT **E**
- D** ESTABLISHED THE CENTERLINE OF OLD CRAWFORD ROAD PER (R1) BY LEAST SQUARES ADJUSTMENT MONUMENT **11** AND ESTABLISHMENT NOTE **C**
- E** ESTABLISHED THE CENTERLINE OF OLD CRAWFORD ROAD BY HOLDING A LINE BETWEEN MONUMENTS **10** AND **11**
- F** ESTABLISHED THE PI OF CRAWFORD CANYON ROAD BY HOLDING RECORD DISTANCE SE'LY FROM MONUMENT **8** PER (R4).
- G** ESTABLISHED THE CENTERLINE OF OLD CRAWFORD ROAD BY HOLDING A LINE BETWEEN MONUMENT **10** AND ESTABLISHMENT NOTE **E**
- H** ESTABLISHED THE CENTERLINE OF OLD CRAWFORD ROAD BY HOLDING A RECORD RADIUS PER (R6) AND TANGENT TO ESTABLISHMENT NOTES **G** AND **E**
- I** ESTABLISHED THE CENTERLINE OF OLD CRAWFORD ROAD BY HOLDING A RECORD RADIUS PER (R6) AND TANGENT TO ESTABLISHMENT NOTES **G** AND **A**
- J** ESTABLISHED THE W'LY RIGHT OF WAY OF CRAWFORD CANYON ROAD. BY HOLDING RECORD DIMENSIONS PARALLEL WITH ESTABLISHMENT **A** PER (R14).
- K** ESTABLISHED THE NW'LY RIGHT OF WAY OF OLD CRAWFORD ROAD. BY HOLDING RECORD DIMENSIONS PARALLEL WITH ESTABLISHMENT NOTES **I**, **H**, **E** AND **D** PER (R14).
- L** ESTABLISHED THE SW'LY RIGHT OF WAY OF OLD CRAWFORD ROAD. BY HOLDING RECORD DIMENSIONS PARALLEL WITH ESTABLISHMENT NOTES **I**, **E** AND **D** PER (R14).
- M** ESTABLISHED BY HOLDING A RECORD DISTANCE PER (R20) SW'LY FROM MONUMENT **10** ALONG LINE ESTABLISHMENT **E**
- N** ESTABLISHED THE POINT OF BEGINNING FOR THE COURSE DESCRIBED IN (R20) AS BEING THE INTERSECTION OF ESTABLISHMENT **K** WITH A LINE THAT IS PERPENDICULAR TO, & 30' NW'LY OF ESTABLISHMENT NOTE **M** PER (R20).
- O** ESTABLISHED THE NW'LY POINT OF THE COURSE DESCRIBED IN (R20) BY HOLDING A RECORD DISTANCE SW'LY FROM BC ESTABLISHMENT NOTE **K** ALONG LINE ESTABLISHMENT NOTE **K** PER (R20).
- P** ESTABLISHED THE N'LY RIGHT OF WAY OF NEWPORT BLVD. BY HOLDING RECORD DIMENSIONS PARALLEL WITH ESTABLISHMENT **E** PER (R20).
- Q** ESTABLISHED THE SW'LY LINE OF THE COURSE DESCRIBED IN (R20) BY HOLDING A LINE BETWEEN ESTABLISHMENT NOTES **P** AND **O** RADIAL TO CURVE ESTABLISHMENT NOTE **P** PER (R20).
- R** ESTABLISHED THE BC COURSE DESCRIBED IN (R20) BY HOLDING RECORD ANGLE, DISTANCE, AND CURVATURE INFORMATION PER (R20) SW'LY FROM BC ESTABLISHMENT NOTE **O**
- S** ESTABLISHED THE N'LY RIGHT OF WAY OF NEWPORT BLVD. BY HOLDING RECORD DIMENSIONS PARALLEL WITH ESTABLISHMENT **E** PER (R1).
- T** ESTABLISHED A PORTION OF THE COURSE DESCRIBED IN (R20) HOLDING RECORD ANGLE, DISTANCE, AND CURVATURE INFORMATION PER (R20) IN BETWEEN ESTABLISHMENT NOTES **R** AND **S**
- U** ESTABLISHED THE SE'LY CORNER OF THE COURSE DESCRIBED IN (R19) BY HOLDING RECORD ANGLE, DISTANCE, AND CURVATURE INFORMATION PER (R5) NE'LY FROM THE INTERSECTION BETWEEN THE ESTABLISHMENT NOTES **I** AND **S** ALONG LINE ESTABLISHMENT NOTE **S**
- V** ESTABLISHED THE SE'LY LINE OF PARCEL 3 DESCRIBED IN (R5) BY HOLDING A LINE BETWEEN MONUMENT **12** AND ESTABLISHMENT NOTE **U** PER (R5).
- W** ESTABLISHED THE W'LY RIGHT OF WAY OF CRAWFORD CANYON RD. BY HOLDING RECORD DIMENSIONS PARALLEL WITH ESTABLISHMENT **A** PER (R1).
- X** ESTABLISHED THE E'LY RIGHT OF WAY OF CRAWFORD CANYON RD. BY HOLDING RECORD DIMENSIONS PARALLEL WITH ESTABLISHMENT **A** PER (R5).
- Y** ESTABLISHED THE SW'LY LINE OF LOT 1 DESCRIBED IN (R4) BY INTERSECTION BETWEEN ESTABLISHMENT NOTES **U** AND **X** PER (R4).
- Z** ESTABLISHED A PORTION OF THE E'LY RIGHT OF WAY OF CRAWFORD CANYON RD. DEDICATED PER (R4) BY HOLDING RECORD DISTANCES NW'LY FROM ESTABLISHMENT **Y** ALONG ESTABLISHMENT **X** PER (R4).
- AA** ESTABLISHED THE SW'LY LINE OF PARCEL 1 PER (R8) BY HOLDING A LINE BETWEEN MONUMENT NOTES **22** AND **23**
- AB** ESTABLISHED THE CENTERLINE OF CRAWFORD CANYON ROAD BY HOLDING A LINE NW'LY FROM MONUMENT **9**, AND PARALLEL WITH & 30' SW'LY FROM LINE ESTABLISHMENT NOTE **A**
- AC** ESTABLISHED THE CENTERLINE OF CRAWFORD CANYON RD. BY HOLDING A RECORD RADIUS PER (R11) AND TANGENT TO ESTABLISHMENT NOTES **A** AND **AB**
- AD** ESTABLISHED THE CENTERLINE OF COUNTRY HAVEN LN. BY HOLDING A LINE BETWEEN MONUMENT NOTES **23** AND **26**
- AE** ESTABLISHED THE CENTERLINE OF COUNTRY HAVEN LN. BY HOLDING A LINE BETWEEN MONUMENT NOTES **24** AND **23**

ESTABLISHMENT NOTES

- AF** ESTABLISHED THE CENTERLINE OF COUNTRY HAVEN LN. BY HOLDING A RECORD ANGLE NE'LY FROM MONUMENT **24** PER (R7).
- AG** ESTABLISHED THE CENTERLINE OF COUNTRY HAVEN LN. BY HOLDING A RECORD RADIUS PER (R13) AND TANGENT TO ESTABLISHMENT NOTES **AF** AND **AB**
- AH** ESTABLISHED THE CENTERLINE OF DANIGER RD. BY HOLDING A LINE BETWEEN MONUMENTS **27** AND **29**
- AI** S.F.N. ESTABLISHED THE CENTERLINE INTERSECTION OF CRAWFORD ROAD AND DANIGER RD. BY INTERSECTION HOLDING LINE ESTABLISHMENTS **AE** AND **AG**
- AJ** S.F.N. ESTABLISHED THE CENTERLINE INTERSECTION OF CRAWFORD ROAD AND COUNTRY HAVEN LN. BY INTERSECTION BETWEEN ESTABLISHMENT NOTES **A** AND
- AK** ESTABLISHED THE PI OF CRAWFORD CANYON ROAD BY HOLDING RECORD DISTANCE NW'LY FROM ESTABLISHMENT NOTE **A** ALONG LINE ESTABLISHMENT NOTE **AG** PER (R12).
- AL** ESTABLISHED THE CENTERLINE OF HINTON WAY BY HOLDING RECORD ANGLES, DISTANCES & CURVATURE INFORMATION PER (R16) BETWEEN MONUMENTS **30**, **31**, **32** AND **33**
- AM** ESTABLISHED THE CENTERLINE BC OF HINTON WAY BY HOLDING RECORD ANGLES, DISTANCES & CURVATURE INFORMATION PER (R16) NE'LY FROM MONUMENT **32** ALONG LINE ESTABLISHMENT NOTE **AI**
- AN** ESTABLISHED THE CENTERLINE OF HINTON WAY BY HOLDING A RECORD DISTANCE PER (R16) AND TANGENT TO ESTABLISHMENT NOTE **AI**
- AO** S.F.N. ESTABLISHED THE CENTERLINE INTERSECTION OF CRAWFORD CANYON ROAD AND HINTON WAY BY HOLDING A RECORD DISTANCE PER (R16) ALONG LINE ESTABLISHMENT NOTE **AI**
- AP** S.F.N. ESTABLISHED A POINT ON CENTERLINE OF CRAWFORD CANYON RD. BY TIES PER (R29) FROM MONUMENTS **34**, **35** AND **36**
- AQ** ESTABLISHED THE CENTERLINE OF CRAWFORD CANYON ROAD BY HOLDING A LINE BETWEEN ESTABLISHMENT NOTES **AO** AND **AP**
- AR** ESTABLISHED THE CENTERLINE PI OF CRAWFORD CANYON ROAD BY PROLONGATION LINE ESTABLISHMENT **AO** HOLDING A RECORD DISTANCE SE'LY FROM ESTABLISHMENT NOTE **AP**
- AS** ESTABLISHED THE CENTERLINE OF CRAWFORD CANYON ROAD BY HOLDING A LINE BETWEEN ESTABLISHMENT NOTES **AO** AND **AP**
- AT** ESTABLISHED THE SW'LY RIGHT OF WAY OF CRAWFORD CANYON RD. BY HOLDING RECORD DIMENSIONS PARALLEL WITH ESTABLISHMENT **AS** PER (R14).
- AU** ESTABLISHED THE NE'LY RIGHT OF WAY OF CRAWFORD CANYON RD. BY HOLDING RECORD DIMENSIONS PARALLEL WITH ESTABLISHMENT **AS** PER (R11).
- AV** ESTABLISHED THE NE'LY ULTIMATE RIGHT OF WAY OF CRAWFORD CANYON RD. AS SHOWN PER (R8) BY HOLDING RECORD DIMENSIONS PARALLEL WITH ESTABLISHMENT **AS** PER (R8).
- AW** ESTABLISHED THE SE'LY RIGHT OF WAY OF COUNTRY HAVEN LN. BY HOLDING RECORD DIMENSIONS PARALLEL WITH ESTABLISHMENT NOTES **AG**, **AT** AND **AP** PER (R13).
- AX** ESTABLISHED THE NW'LY RIGHT OF WAY OF DANIGER RD. BY HOLDING RECORD DIMENSIONS PARALLEL WITH ESTABLISHMENT **AT** PER (R11).
- AY** ESTABLISHED THE SE'LY RIGHT OF WAY OF DANIGER RD. BY HOLDING RECORD DIMENSIONS PARALLEL WITH ESTABLISHMENT **AT** PER (R11).
- AZ** ESTABLISHED THE SW'LY RIGHT OF WAY OF CRAWFORD CANYON RD. BY HOLDING RECORD DIMENSIONS PARALLEL WITH ESTABLISHMENT **AS** PER (R14).
- BA** ESTABLISHED THE NW'LY RIGHT OF WAY OF COUNTRY HAVEN LN. BY HOLDING RECORD DIMENSIONS PARALLEL WITH ESTABLISHMENT NOTES **AF**, **AO** AND **AE** PER (R13).
- BB** ESTABLISHED THE NW'LY RIGHT OF WAY OF COUNTRY HAVEN LN. BY HOLDING RECORD ANGLES, DISTANCES & CURVATURE INFORMATION PER (R13) NW'LY FROM ESTABLISHMENT NOTE **EA**
- BC** ESTABLISHED THE INTERSECTION BETWEEN THE SE'LY LINE OF LOT 13 DESCRIBED IN (R25) AND THE CENTERLINE OF CRAWFORD CANYON RD. BY HOLDING A RECORD DISTANCE PER (R25) SE'LY FROM ESTABLISHMENT NOTE **A** ALONG LINE ESTABLISHMENT NOTE **AE**
- BD** ESTABLISHED THE SE'LY LINE OF LOT 13 DESCRIBED IN (R25) BY HOLDING A LINE BETWEEN ESTABLISHMENT NOTES **E** AND **EB**
- BE** ESTABLISHED PARCEL 2 DESCRIBED IN (R31). BY HOLDING RECORD DIMENSIONS PARALLEL WITH ESTABLISHMENTS **AE**, **AC**, **I**, **H** AND **E** PER (R31).
- BF** ESTABLISHED THE INTERSECTION OF LINE ESTABLISHMENT **AE** AND THE N'LY PROLONGATION OF LINE ESTABLISHMENT **AY** BY INTERSECTION.
- BG** ESTABLISHED THE INTERSECTION BETWEEN THE NE'LY LINE OF PARCEL 1 DESCRIBED IN (R12) AND THE CENTERLINE OF CRAWFORD CANYON RD. BY HOLDING A RECORD DISTANCE PER (R12) SE'LY FROM ESTABLISHMENT NOTE **A** ALONG LINE ESTABLISHMENT NOTE **AE**
- BH** ESTABLISHED THE SW'LY CORNER OF PARCEL 1 PER (R12) BY HOLDING A RECORD DISTANCE SW'LY FROM ESTABLISHMENT NOTE **BF** AND PARALLEL WITH ESTABLISHMENT NOTE **AF**
- BI** ESTABLISHED THE SE'LY CORNER OF PARCEL 1 PER (R12) BY HOLDING A RECORD DISTANCE SW'LY FROM ESTABLISHMENT NOTE **BG** AND A RECORD DISTANCE SE'LY FROM ESTABLISHMENT NOTE **BH**
- BJ** ESTABLISHED THE SE'LY LINE OF PARCEL 1 PER (R12) BY HOLDING A RECORD DISTANCE ALONG THE LINE BETWEEN ESTABLISHMENT NOTES **BG** AND **B**

ESTABLISHMENT NOTES

- BK** ESTABLISHED THE NE'LY OF PARCEL 1 PER (R12) BY HOLDING A RECORD RADIUS PER (R11) AND TANGENT TO ESTABLISHMENT NOTES **EB** AND **EO**
- BL** ESTABLISHED THE NE'LY OF PARCEL 1 PER (R12) BY HOLDING A LINE PARALLEL WITH ESTABLISHMENT NOTE **AF** NE'LY FROM BC ESTABLISHMENT NOTE **EB**
- BM** ESTABLISHED THE SW'LY RIGHT OF WAY OF CRAWFORD CANYON RD. BY HOLDING RECORD DIMENSIONS PARALLEL WITH ESTABLISHMENT **AF** PER (R12).
- BN** ESTABLISHED THE NE'LY RIGHT OF WAY OF CRAWFORD CANYON RD. BY HOLDING RECORD DIMENSIONS PARALLEL WITH ESTABLISHMENT **AS** PER (R11).
- BO** ESTABLISHED THE INTERSECTION BETWEEN THE NW'LY LINE OF 40' EASEMENT DESCRIBED IN (R33) AND THE CENTERLINE OF CRAWFORD CANYON RD. BY HOLDING A RECORD DISTANCE PER (R32) SE'LY FROM ESTABLISHMENT NOTE **EB** ALONG LINE ESTABLISHMENT NOTE **AE**
- BP** ESTABLISHED THE NW'LY LINE OF 40' EASEMENT DESCRIBED IN (R33) BY HOLDING A RECORD DISTANCE PER (R32) PARALLEL WITH ESTABLISHMENT NOTE **AF** SW'LY FROM ESTABLISHMENT NOTE **EO**
- BQ** ESTABLISHED THE INTERSECTION BETWEEN THE NEW AND OLD CENTERLINES OF NEWPORT BLVD. BY HOLDING RECORD ANGLE, DISTANCE, AND CURVATURE INFORMATION NE'LY FROM EC ESTABLISHMENT NOTE **C** ALONG LINE ESTABLISHMENT **B**
- BR** ESTABLISHED THE NEW CENTERLINE OF NEWPORT BLVD. BY HOLDING A RECORD ANGLE, DISTANCE, AND CURVATURE INFORMATION SW'LY FROM EC ESTABLISHMENT NOTE **BM** IN BETWEEN EC ESTABLISHMENT NOTE **BM** AND MONUMENT **11**
- BS** ESTABLISHED PARCEL 156.1 PER (R36), PARCEL 157.1 PER (R37) AND PARCEL 158.1 PER (R38). BY HOLDING RECORD DIMENSIONS PARALLEL WITH ESTABLISHMENT **EB** PER (R1).
- BT** ESTABLISHED PARCEL 159.1 PER (R39) BY HOLDING RECORD ANGLES, DISTANCES & CURVATURE INFORMATION PER (R1) TO THE INTERSECTION WITH LINE ESTABLISHMENT **E**
- BU** ESTABLISHED THE SE'LY CORNER OF PARCEL 15 PER (R3) BY HOLDING THE INTERSECTION BETWEEN LINE ESTABLISHMENTS **S** AND **K**
- BV** ESTABLISHED THE NE'LY CORNER OF PARCEL 15 PER (R3) BY HOLDING RECORD ANGLES, DISTANCES & CURVATURE INFORMATION PER (R1) NE'LY FROM ESTABLISHMENT NOTE **EL** ALONG ESTABLISHMENT NOTE **K**
- BW** ESTABLISHED THE CENTERLINE OF MARCY RANCH DR. BY HOLDING A LINE BETWEEN MONUMENTS **38** AND **39**
- BX** ESTABLISHED THE CENTERLINE OF MARCY RANCH DR. BY HOLDING RECORD ANGLES, DISTANCES & CURVATURE INFORMATION PER (R1) NE'LY FROM BC ESTABLISHMENT NOTE **EV**
- BY** ESTABLISHED THE SE'LY RIGHT OF WAY OF MARCY RANCH DR. BY HOLDING RECORD DIMENSIONS PARALLEL WITH ESTABLISHMENT **BX** PER (R3).
- BZ** ESTABLISHED THE N'LY LINE OF PARCEL 15 PER (R3) BY HOLDING A LINE BETWEEN ESTABLISHMENT NOTE **EV** AND MONUMENT **40**
- CA** ESTABLISHED THE S'LY RIGHT OF WAY OF NEWPORT BLVD. BY HOLDING RECORD DIMENSIONS PARALLEL WITH ESTABLISHMENT **E** PER (R40).
- CB** ESTABLISHED THE INTERSECTION OF CENTERLINE OF CRAWFORD CANYON RD. AND THE EXTENSION OF THE NE'LY LINE OF LOT 27 OF (R40) BY HOLDING RECORD ANGLES, DISTANCES & CURVATURE INFORMATION PER (R1) NW'LY FROM MONUMENT **13** ALONG ESTABLISHMENT **E**
- CC** ESTABLISHED THE NE'LY CORNER OF LOT 27 OF (R40) BY HOLDING RECORD DISTANCE PER (R1) SW'LY FROM ESTABLISHMENT NOTE **CA** AND INTERSECTING ESTABLISHMENT NOTE **CA**
- CD** ESTABLISHED THE NW'LY CORNER OF LOT 15 OF (R40) BY HOLDING A CALCULATED RECORD DISTANCE OF 50.00' PER (R40) SE'LY FROM MONUMENT **4** RADIAL TO ESTABLISHMENT **B** AND INTERSECTING ESTABLISHMENT **CA**
- CE** ESTABLISHED THE NW'LY LOT CORNERS 15 TO 27 OF (R40) BY PROPORTION BETWEEN ESTABLISHMENT NOTES **CC** AND **CD** , PER (R1).
- CF** ESTABLISHED THE INTERSECTION BETWEEN THE SE'LY LINE OF 50' EASEMENT DESCRIBED IN (R50) AND THE CENTERLINE OF CRAWFORD CANYON RD. BY HOLDING A RECORD DISTANCE PER (R49) SE'LY FROM ESTABLISHMENT NOTE **AB** ALONG LINE ESTABLISHMENT NOTE **AS**
- CG** ESTABLISHED THE SE'LY LINE OF 50' EASEMENT DESCRIBED IN (R50) BY HOLDING A RECORD DISTANCE PER (R49) PARALLEL WITH ESTABLISHMENT NOTE **CG** SW'LY FROM ESTABLISHMENT NOTE **AS**
- CH** ESTABLISHED THE N'LY RIGHT OF WAY OF NEWPORT BLVD. BY HOLDING RECORD DIMENSIONS PARALLEL WITH ESTABLISHMENT **B** PER (R2).
- CI** ESTABLISHED THE SW'LY LINE OF PARCEL 2 PER (R2) BY HOLDING A LINE BETWEEN MONUMENT NOTES **41** AND **42**
- CJ** ESTABLISHED THE E'LY RIGHT OF WAY OF CRAWFORD CANYON ROAD BY HOLDING RECORD RADIUS PER (R11) TANGENT WITH ESTABLISHMENT NOTE **Z**
- CK** ESTABLISHED THE E'LY RIGHT OF WAY OF CRAWFORD CANYON ROAD BY HOLDING RECORD DIMENSIONS PARALLEL WITH ESTABLISHMENT NOTE **A** PER (R11)

MONUMENT NOTES

- 1** FOUND 2 1/2" PUNCHED BRASS DISK STAMPED "OCS", PER (R1), DOWN 0.8' IN O.C.S. WELL MONUMENT, ACCEPTED AS A CENTERLINE EC OF NEWPORT BLVD.
- 2** FOUND 2" PUNCHED BRASS DISK STAMPED "OCS", PER (R1), DOWN 0.8' IN O.C.S. WELL MONUMENT, ACCEPTED AS CENTERLINE BC OF NEWPORT BLVD.
- 3** FOUND 2" PUNCHED BRASS DISK STAMPED "OCS", PER (R1), DOWN 0.8' IN O.C.S. WELL MONUMENT, ACCEPTED AS CENTERLINE PCC OF NEWPORT BLVD.
- 4** FOUND 2" PUNCHED BRASS DISK STAMPED "OCS", PER (R1), DOWN 0.5' IN O.C.S. WELL MONUMENT, ACCEPTED AS CENTERLINE EC OF NEWPORT BLVD.
- 5** FOUND PUNCHED SPIKE AND 1 1/4" BRASS TAG STAMPED "OCS", PER (R1), FLUSH IN AC, ACCEPTED AS CENTERLINE PCC OF NEWPORT BLVD.
- 6** FOUND 2" PUNCHED BRASS DISK STAMPED "OCS", PER (R1), DOWN 0.8' IN O.C.S. WELL MONUMENT, ACCEPTED AS THE CENTERLINE INTERSECTION OF NEWPORT BLVD. AND CRAWFORD CANYON RD.
- 7** FOUND PUNCHED SPIKE AND 1 1/2" WASHER STAMPED "RCE 15446", PER (R4), DOWN 0.2' IN AC, ACCEPTED AS A POINT ON CENTERLINE OF CRAWFORD CANYON RD.
- 8** FOUND PUNCHED SPIKE AND 1 1/2" WASHER STAMPED "RCE 15446", PER (R4), DOWN 0.2' IN AC, ACCEPTED AS A POINT ON CENTERLINE OF CRAWFORD CANYON RD.
- 9** FOUND 2 1/4" BRASS DISK STAMPED "RCE 20106", PER (R1), DOWN 1.9' IN O.C.S. WELL MONUMENT, ACCEPTED AS A PI CENTERLINE OF CRAWFORD CANYON RD.
- 10** FOUND 3/4" IRON PIPE, NAIL AND WASHER, PER (R6), DOWN 1.6' IN AC, ACCEPTED AS A PI CENTERLINE OF OLD CRAWFORD RD.
- 11** FOUND 3/4" IRON PIPE, NAIL AND WASHER, PER (R6), DOWN 2.3' IN AC, ACCEPTED AS A PI CENTERLINE OF OLD CRAWFORD RD.
- 12** FOUND 1" IRON PIPE AND PLASTIC PLUG, PER (R1), DOWN 0.6' IN DIRT, ACCEPTED AS THE SW'LY CORNER OF LOT 1 PER (R4).
- 13** FOUND 2" PUNCHED BRASS DISK STAMPED "OCS", PER (R1), DOWN 0.5' IN O.C.S. WELL MONUMENT, ACCEPTED AS CENTERLINE EC OF NEWPORT BLVD.
- 14** FOUND 2" PUNCHED BRASS DISK STAMPED "OCS", PER (R1), DOWN 0.5' IN O.C.S. WELL MONUMENT, ACCEPTED AS A POINT ON CENTERLINE OF NEWPORT BLVD.
- 15** FOUND 1" IRON PIPE AND PLASTIC CAP STAMPED "15446", PER (R4), DOWN 0.65' IN DIRT, S85°28'17"W 0.06' FROM ANGLE POINT E'LY RIGHT OF WAY OF CRAWFORD RD.
- 16** FOUND 3/4" IRON PIPE, LEAD, TACK AND TAG STAMPED "15446", PER (R4), FLUSH IN AC, S63°09'30"W 0.06' FROM E'LY RIGHT OF WAY OF CRAWFORD RD.
- 17** FOUND 1" IRON PIPE AND PLASTIC CAP STAMPED "15446", PER (R4), DOWN 0.25' IN DIRT, S30°38'55"W 0.10' FROM E'LY RIGHT OF WAY OF CRAWFORD RD.
- 18** FOUND 1" IRON PIPE AND 3/4" BRASS TAG STAMPED "14814", PER (R3), DOWN 0.30' IN DIRT, S62°52'53"E 0.32' FROM W'LY RIGHT OF WAY OF OLD CRAWFORD RD.
- 19** FOUND 1" IRON PIPE AND 3/4" BRASS TAG STAMPED "14814", PER (R3), DOWN 0.30' IN DIRT, S44°25'06"E 0.44' FROM W'LY RIGHT OF WAY OF OLD CRAWFORD RD.
- 20** FOUND 1" IRON PIPE AND 3/4" BRASS TAG ILLEGIBALE, PER (R3), DOWN 0.30' IN DIRT, S69°44'21"E 0.38' FROM W'LY RIGHT OF WAY OF OLD CRAWFORD RD.
- 21** FOUND 1" IRON PIPE AND 3/4" BRASS TAG STAMPED "1481.", PER (R3), DOWN 0.30' IN DIRT, S69°44'21"E 0.36' FROM W'LY RIGHT OF WAY OF OLD CRAWFORD RD.
- 22** FOUND 1" IRON PIPE, TACK AND TAG STAMPED "2210", PER (R23), DOWN 0.5' IN DIRT, ACCEPTED AS THE SE'LY PROPERTY CORNER OF PARCEL 2 AND THE NE'LY RIGHT OF WAY OF CRAWFORD CANYON RD. PER (R8).
- 23** FOUND 1" IRON PIPE, TACK AND TAG STAMPED "RCE 12971", PER (R8), DOWN 1.9 IN DIRT, ACCEPTED AS A PI NE'LY RIGHT OF WAY OF CRAWFORD CANYON RD. PER (R8).
- 24** FOUND PK. NAIL, PER (R26 & R27), FLUSH IN AC, ACCEPTED AS CENTERLINE PI OF COUNTRY HAVEN LN.
- 25** FOUND PK. NAIL, PER (R26 & R27), DOWN 0.05' IN AC, ACCEPTED AS CENTERLINE PI OF COUNTRY HAVEN LN.
- 26** FOUND 1 1/2" HOLLOW IRON PIPE, FLUSH IN AC, NO REF. ACCEPTED AS A POINT ON CENTERLINE OF COUNTRY HAVEN LN.
- 27** FOUND 2" PUNCHED BRASS DISK STAMPED "RCE20106", PER (R11), DOWN 2.1' IN O.C.S. WELL MONUMENT, ACCEPTED AS THE CENTERLINE INTERSECTION OF DANIGER RD. AND CORALWOOD DR.
- 28** FOUND 2" PUNCHED BRASS DISK STAMPED "RCE20106", PER (R11), DOWN 2.1' IN O.C.S. WELL MONUMENT, ACCEPTED AS THE CENTERLINE INTERSECTION OF DANIGER RD. AND HIGHCREST ST.
- 29** FOUND GEAR SPIKE AND 1 3/4" WASHER STAMPED "LS7177", PER (R22), DOWN 0.25' IN AC, ACCEPTED AS A POINT ON CENTERLINE OF DANIGER RD.
- 30** FOUND SPIKE AND 1 1/2" WASHER STAMPED "LS 3120", PER (R16), DOWN 0.25' IN AC, ACCEPTED AS THE CENTERLINE BC OF HINTON WAY.
- 31** FOUND SPIKE AND 1 1/2" WASHER STAMPED "LS 3120", PER (R16), DOWN 0.25' IN AC, ACCEPTED AS THE CENTERLINE EC OF HINTON WAY.
- 32** FOUND SPIKE AND 1 1/2" WASHER STAMPED "LS 3120", PER (R16), DOWN 0.25' IN AC, ACCEPTED AS THE CENTERLINE BC OF HINTON WAY.
- 33** FOUND SPIKE AND 1 1/2" WASHER STAMPED "LS 3120", PER (R16), DOWN 0.25' IN AC, N34°13'52"W 0.07' FROM CENTERLINE EC OF HINTON WAY.
- 34** FOUND 2" IRON PIPE AND PLASTIC CAP STAMPED "RCE28918", PER (R25), DOWN 0.5' IN DIRT, ACCEPTED AS A TIE PER (29).
- 35** FOUND PK NAIL W/TAG, STAMPED "O.C.S. TIE", FLUSH IN CONCRETE CURB, ACCEPTED AS A TIE PER (R29)
- 36** FOUND PK NAIL W/TAG, STAMPED "O.C.S. TIE", FLUSH IN CONCRETE CURB, ACCEPTED AS A TIE PER (R29)
- 37** FOUND 3/4" IRON PIPE, AND NAIL, NO REFERENCE, DOWN 2' IN AC, NOT ACCEPTED AS A PI CENTERLINE OF OLD CRAWFORD RD.

MONUMENT NOTES

- 38** FOUND 3 1/2" PUNCHED BRASS DISK STAMPED "RCE 14814", PER (R3), DOWN 1.6' IN O.C.S. WELL MONUMENT, ACCEPTED AS THE CENTERLINE INTERSECTION OF MARCY DR. AND MARCY RANCH RD.
- 39** FOUND 3 1/2" PUNCHED ALUMINUM CAP STAMPED "RCE 14814", PER (R3), DOWN 1.6' IN O.C.S. WELL MONUMENT, ACCEPTED AS THE CENTERLINE EC OF MARCY RANCH RD.
- 40** FOUND 3/4" LEAD, TACK AND TAG STAMPED "RCE 14814" PER (R3), FLUSH IN CONCRETE, ACCEPTED AS THE NW'LY CORNER OF LOT 16 PER (R1) AND THE E'LY RIGHT OF WAY OF MARCY RANCH ROAD.
- 41** FOUND 3/4" BRASS TAG STMPD "RCE 13542", IN LIEU OF 1" IRON PIPE WITH TAG STAMPED "RCE 13542", PER R2, FLUSH WITH SURFACE OF CONCRETE ACCEPTED AS THE SE'LY CORNER OF LOT 2 PER (R2)
- 42** FOUND 1" IRON PIPE AND TAG STAMPED "RCE 13542", PER (R2), DOWN 0.1' IN DIRT, ACCEPTED AS THE SW'LY CORNER OF LOT 2 PER (R2).

COUNTY OF ORANGE OC PUBLIC WORKS OC SURVEY/FIELD SERVICES/BOUNDARY ANALYSIS & MAPPING			
CRAWFORD CANYON ROAD SIDEWALK EXTENSION PHASE II			
BOUNDARY MAP			
PROJECT LIMITS: FROM NEWPORT BLVD. TO EL ROY DR. ALONG CRAWFORD CANYON RD. AND FROM 240' NE'LY OF HYDE DR. TO CRAWFORD CANYON RD. ALONG NEWPORT BLVD.			
DATE OF SURVEY: 01/19/2023		BY: J. RUSSO & PARTY	SHEET NO. 2 of 13
MAPPING		BY: P. MAGUIRE	
OFFICE CHECK		BY: M. KUBISTY, PLS	
FIELD CHECK		BY: J. RUSSO & PARTY	
SCALE: 1"=50'		FILE # 1920PW-IN0029	
FILE: CRAWFORD_CANYON_ROAD_SIDEWALK_EXTENSION_BOUNDARY_2023.DWG			

LINE TABLE			
LINE #	BEARING	MEASURED DISTANCE	RECORD DISTANCE
L1	N42°32'57"E	29.24'	(29.25' R1)
L2	N67°28'06"W	347.94'	(347.94' R1)
L3	N16°34'34"W	121.54'	(121.74' R2)
L4	N16°34'34"W	370.36'	(369.94' R4)
L5	N16°34'32"W	17.37'	— — — —
L6	N16°34'34"W	74.30'	— — — —
L7	N16°33'53"W	91.67'	(91.69' R4)
L8	N16°34'34"W	254.67'	— — — —
L9	S16°34'34"E	54.50'	— — — —
L10	S16°34'31"E	309.16'	(309.14' R4)
L11	N06°50'13"E	103.67'	(103.66' R5)
L12	N06°50'13"E	71.80'	(71.79' R5)
L13	S06°50'13"W	175.48'	(175.45' CR20)
L14	S46°54'40"W	71.80'	(71.79' R5)
L15	S46°54'40"W	65.94'	(65.94' R20)
L16	S46°54'40"W	356.45'	(356.58' R20)
L17	S46°54'40"W	422.39'	(422.54' R1)
L18	S46°54'40"W	77.30'	(77.15' R6)
L19	S20°15'39"W	77.30'	(77.15' R6)
L20	N20°15'39"E	75.24'	— — — —

LINE TABLE			
LINE #	BEARING	MEASURED DISTANCE	RECORD DISTANCE
L21	N20°15'39"E	129.49'	— — — —
L22	N20°15'39"E	66.03'	(66.57' R3)
L23	N20°15'38"E	204.73'	(204.38' R3)
L24	N05°30'19"E	66.03'	(66.57' R3)
L25	N05°30'19"E	93.65'	(93.01' CR1)
L26	S05°30'34"W	159.67'	(159.58' CR1)
L27	N20°15'39"E	62.81'	(62.81' R20)
L28	N47°13'58"W	43.00'	— — — —
L29	S47°14'02"E	75.47'	(75.16' R20)
L30	S30°25'56"W	43.44'	(44.52' R5)
L31	S30°25'56"W	13.67'	(13.60' R5)
L32	S30°25'56"W	41.01'	(40.80' R5)
L33	S30°25'56"W	54.69'	(54.47' R1)
L34	N30°25'56"E	109.37'	(108.82' R5)
L35	N16°34'34"W	892.73'	(892.76' R1)
L36	S16°34'34"E	272.47'	(272.55' R5)
L37	S46°54'40"W	65.94'	(65.94' R20)
L38	S46°54'40"W	356.45'	(356.58' R20)
L39	N48°54'56"E	54.56'	(54.56' R1&R19)
L40	N55°42'56"E	58.50'	(58.50' R1&R19)

LINE TABLE			
LINE #	BEARING	MEASURED DISTANCE	RECORD DISTANCE
L41	N63°38'56"E	103.35'	(103.35' R1)
L42	N61°35'56"E	105.35'	(105.35' R1)
L43	N71°29'56"E	108.50'	(108.50' R1)
L44	N67°34'56"E	32.00'	(32.00' R1)
L45	N26°25'22"E	18.85'	(16.94' R1)
L46	S05°15'58"E	101.98'	(101.98' R18)
L47	S16°34'34"E	50.00'	(50.00' R18)
L48	S38°22'46"E	53.85'	(53.85' R18)
L49	S31°09'08"E	33.88'	(33.90' R12)
L50	N16°34'31"W	249.93'	(250.96' R1)
L51	S47°03'46"E	54.50'	(54.49' R11)
L52	S47°03'46"E	197.98'	(198.03' R11)
L53	N72°36'40"W	23.19'	(23.29' R13)
L54	S47°03'46"E	252.48'	(252.52' R11)
L55	N47°03'46"W	170.35'	(170.14" R12)
L56	N47°03'46"W	64.09'	(64.31' R12)
L57	N28°13'26"W	72.93'	(72.93' R10)
L58	N28°13'26"W	70.29'	(67.40' R16)
L59	N28°13'23"W	143.21'	(143.42' R16)
L60	N61°55'20"E	67.00'	(67.00' R16)

LINE TABLE			
LINE #	BEARING	MEASURED DISTANCE	RECORD DISTANCE
L61	S47°51'12"W	31.25'	(31.25' R16)
L62	N47°03'46"W	214.02'	(213.68' R8)
L63	N35°54'41"E	106.37'	(106.35' R13)
L64	N35°54'41"E	38.16'	(38.16' R13)
L65	S35°54'41"W	144.52'	(144.51' R13)
L66	S72°34'59"E	38.16'	(38.16' R13)
L67	S72°34'59"E	69.43'	(69.39' R13)
L68	N72°34'59"W	107.59'	(107.55' R13)
L69	N47°03'44"W	26.89'	(26.89' R13)
L70	S35°42'25"W	393.78'	(393.90' R11)
L71	S35°42'25"W	657.21'	(657.50' R11)
L72	S35°42'25"W	355.68'	(355.72' CR11)
L73	S35°42'25"W	1406.67'	(1407.12' CR11)
L74	S17°27'53"W	19.58'	(19.59' R1)
L75	N47°03'46"W	28.21'	(28.21' R12)
L76	N47°03'46"W	8.07'	(8.07' R12)
L77	N35°54'41"E	10.08'	(10.07' R12)
L78	N35°54'41"E	10.08'	(10.08' R12)
L79	S35°54'45"W	20.16'	(20.15' R12)
L80	S35°59'15"W	45.75'	(45.74' R12)

LINE TABLE			
LINE #	BEARING	MEASURED DISTANCE	RECORD DISTANCE
L81	S16°34'34"E	92.76'	(89.59' R9)
L82	S16°34'34"E	304.83'	(304.83' R4)
L83	N13°59'12"E	23.00'	(23.00' R4)
L84	N02°08'50"W	24.69'	(24.69' R4)
L85	N01°01'49"W	25.38'	(25.38' R4)
L86	N63°13'18"W	33.90'	(33.90' R4)
L87	S16°34'34"E	28.47'	(28.68' R4)
L88	N35°54'41"E	47.41'	(47.32' R13)
L89	N72°36'40"W	69.56'	(69.87' R25)
L90	S35°54'41"W	40.30'	(40.29' CR12)
L91	S35°59'15"W	90.36'	(90.37' CR12)
L92	S47°03'46"E	11.40'	(11.40' R25)
L93	S47°03'46"E	275.00'	(275.00' R32)
L94	N27°55°34"E	199.99'	(199.99' R1)
L95	N27°55°34"E	123.92'	(192.07' CR1)
L96	N27°55°34"E	144.88'	(144.91' CR1)
L97	N39°11'28"E	37.77'	(37.77' R38)
L98	N05°30'19"E	31.30'	(31.30' R1)
L99	S10°56'00"W	24.33'	(22.75' R38)
L100	S71°34'58"E	4.21'	(4.21' R38)

LINE TABLE			
LINE #	BEARING	MEASURED DISTANCE	RECORD DISTANCE
L101	N42°53'45"E	31.93'	(31.92' R29)
L102	N87°12'34"W	22.84'	(22.84' R29)
L103	S29°30'11"W	22.85'	(22.85' R29)
L104	S47°03'44"E	234.44'	(234'.41 R10)
L105	S35°54'44"W	254.88'	(254.88' R32)
L106	S25°30'11"W	9.12'	(9.12' R1)
L107	S25°30'11"W	50.62'	(50.62' R1)
L108	N71°11'02"E	15.80'	(15.70' R1)
L109	S66°45'23"W	17.31'	(17.31' R44)
L110	S83°38'40"E	31.50'	(31.38 R44)
L111	N89°29'17"E	38.89'	(38.85' R44)
L112	S22°16'14"W	10.38'	(10.38' R44)
L113	N83°03'09"E	48.00'	(48.00' R46)
L114	N88°40'13"E	25.06'	(25.06' R46)
L115	N83°10'43"E	10.00'	(10.00' R46)
L116	S06°49'17"E	3.95'	(3.95' R46)
L118	N67°17'20"E	28.14'	(28.14' R45)
L120	N67°18'22"E	39.77'	(39.81' R43)
L121	N79°23'22"E	57.80'	(57.80' R43)
L122	N79°23'54"E	16.20'	(16.25' R42)

CURVE TABLE						
CURVE #	DELTA	RADIUS	LENGTH	RECORD DELTA	RECORD RADIUS	RECORD LENGTH
C1	1°50'34"	999.97'	32.16'	(1°50'33" R1)	(1000.00' R1)	(32.16' R1)
C2	23°24'47"	500.32'	204.45'	(23°24'35" R5)	(500.34' R5)	(204.43' R5)
C3	40°04'27"	196.88'	137.70'	(40°04'34" R6)	(196.89' R6)	(137.72' R6)
C4	26°39'01"	326.37'	151.81'	(26°35'56" R5)	(326.38' R5)	(151.52' R5)
C5	14°45'20"	509.98'	131.34'	(14°52'26" R3)	(510.00' R3)	(132.39' R3)
C6	26°39'01"	356.37'	165.76'	(26°35'50" R20)	(356.38' R20)	(165.43' R20)
C7	7°18'35"	1079.97'	137.78'	(07°19'00" R20)	(1080.00' R20)	(137.91' R20)
C8	16°56'59"	50.00'	14.79'	— — — —	— — — —	— — — —
C9	3°38'34"	579.98'	36.87'	(3°37'20" R1)	(580.00' R1)	(36.67' R1)
C10	22°38'19"	1049.97'	414.86'	(22°36'30" R1)	(1050.00' R1)	(414.32' R1)
C11	26°46'10"	226.88'	106.00'	(26°45'39" R5)	(226.85' R5)	(105.95' R5)
C12	7°20'42"	296.37'	37.99'	(7°20'35" R5)	(296.38' R5)	(37.98' R5)
C13	116°51'29"	50.00'	101.97'	(115°37'22" R20)	(50.00' R20)	(100.90' R20)
C14	6°40'24"	50.00'	5.82'	(06°44'57" R19)	(50.00' R19)	(5.89' R19)
C15	13°17'51"	241.88'	56.14'	(13°45'22" R18)	(241.89' R18)	(58.08' R18)
C16	30°29'12"	199.99'	106.41'	(30°28'53" R11)	(200.00' R11)	(106.40' R11)
C17	71°30'20"	53.00'	66.14'	(71°30'20" R13)	(53.00' R13)	(66.14' R13)
C18	13°59'57"	150.00'	36.65'	(14°00'00" R16)	(150.00' R16)	(36.65' R16)
C19	6°42'58"	150.00'	17.58'	(6°42'17" R16)	(150.00' R16)	(17.55' R16)
C20	83°02'59"	45.16'	65.46'	(83°04'00" R12)	(45.16' R12)	(65.47' R12)

CURVE TABLE						
CURVE #	DELTA	RADIUS	LENGTH	RECORD DELTA	RECORD RADIUS	RECORD LENGTH
C22	71°30'20"	25.00'	31.20'	(71°30'20" R13)	(25.00' R13)	(31.20' R13)
C23	82°58'25"	25.00'	36.20'	(83°03'55" R13)	(25.00' R13)	(36.24' R13)
C24	14°44'10"	1049.97'	270.04'	(14°39'57" R2)	(1050.00' R2)	(268.77' R2)
C25	3°04'57"	999.97'	53.80'	(3°04'57" R34)	(1000.00' R34)	(53.80' R34)
C26	14°37'27"	999.97'	255.23'	(14°37'27" R34)	(1000.00' R34)	(255.24' R34)
C27	14°37'27"	949.97'	242.47'	- - - -	- - - -	- - - -
C28	14°37'27"	939.97'	239.92'	- - - -	- - - -	- - - -
C29	10°06'31"	189.99'	33.52'	(10°06'25" R38)	(190.00' R38)	(33.52 R38)
C30	1°47'40"	539.98'	16.91'	(01°47'37" R1)	(540.00' R1)	(16.91' R1)
C31	28°04'50"	999.97'	490.09'	- - - -	- - - -	- - - -
C32	28°04'49"	999.97'	490.08'	- - - -	- - - -	- - - -
C33	0°41'54"	940.97'	11.47'	(00°41'25" R1)	(941.00' R1)	(11.34' R1)
C35	12°00'17"	949.97'	199.04'	(12°00'18" R1)	(950.00' R1)	(199.05' R1)
C36	3°04'09"	949.97'	50.89'	(03°04'09" R1)	(950.00' R1)	(50.89' R1)
C37	10°14'07"	940.97'	168.09'	(10°15'03" R1)	(941.00' R1)	(168.36' R1)
C40	10°13'19"	949.97'	169.48'	(10°13'33" R46)	(950.00' R46)	(169.55' R46)
C41	1°33'42"	943.97'	25.73'	(01°33'43" R46)	(944.00' CR46)	(25.73' R46)
C42	5°18'06"	949.97'	87.90'	(05°18'14" R45)	(950.00' R45)	(87.94' R45)
C43	3°38'52"	943.97'	60.10'	(03°39'02" R45)	(944.00' CR45)	(60.15' R45)
C44	5°55'09"	949.97'	98.14'	(05°55'17" R40)	(950.00' R40)	(98.18' R40)

CURVE TABLE						
CURVE #	DELTA	RADIUS	LENGTH	RECORD DELTA	RECORD RADIUS	RECORD LENGTH
C45	5°51'44"	949.97'	97.20'	(05°51'54" R40)	(950.00' R40)	(97.24' R40)
C46	4°11'02"	949.97'	69.37'	(04°10'27" R1)	(950.00' R1)	(69.21' R1)
C47	1°38'22"	949.97'	27.18'	(01°38'58" CR1)	(950.00' CR1)	(27.35' CR1)
C48	5°17'46"	949.97'	87.81'	(05°17'53" R40)	(950.00' R40)	(87.84' R40)
C49	5°36'08"	949.97'	92.89'	(05°36'17" R40)	(950.00' R40)	(92.93' R40)
C50	5°58'32"	949.97'	99.08'	(05°58'42" R40)	(950.00' R40)	(99.12' R40)
C51	6°09'43"	949.97'	102.17'	(06°09'51" R40)	(950.00' R40)	(102.21' R40)
C52	6°01'56"	949.97'	100.02'	(06°02'05" R40)	(950.00' R40)	(100.06' R40)
C53	5°53'22"	949.97'	97.65'	(05°58'48" R40)	(950.00' R40)	(97.69' R40)
C54	0°08'09"	949.97'	2.25'	(00°08'09" R40)	(950.00' R40)	(2.25' R40)

				COUNTY OF ORANGE OC PUBLIC WORKS OC SURVEY/FIELD SERVICES/BOUNDARY ANALYSIS & MAPPING	
		CRAWFORD CANYON ROAD SIDEWALK EXTENSION PHASE II			
		BOUNDARY MAP			
		PROJECT LIMITS: FROM NEWPORT BLVD. TO EL ROY DR. ALONG CRAWFORD CANYON RD. AND FROM 240' NE'LY OF HYDE DR. TO CRAWFORD CANYON RD. ALONG NEWPORT BLVD.			
		DATE OF SURVEY: 01/19/2023		BY: J. RUSSO & PARTY	
		MAPPING		BY: P. MAGUIRE	
		OFFICE CHECK		BY: M. KUBISTY, PLS	
		FIELD CHECK		BY: J. RUSSO & PARTY	
		SCALE: 1"=50'		FILE #E019817D FILE #1920PW-IN0029	
		FILE: CRAWFORD CANYON ROAD_SIDEWALK EXTENSION_BOUNDARY_2023.DWG			

EASEMENT NOTES

- 1

O.R. 2011–603896 GRANT DEED TO ORANGE COUNTY DATED 11/29/2011 (R30).
- 2

RIGHT OF WAY FOR SLOPE PURPOSES PER INST. 13486/1458 O.R. (R18).
- 3

RIGHT OF WAY FOR SLOPE & DRAINAGE PURPOSES PER INST. 94–0389373 O.R. (R19).
- 4

PARCEL 2 OF GRANT DEED A 20.00’ WIDE EASEMENT FOR ROAD PURPOSES RECORDED JANUARY 28, 1954 IN BOOK 2658, PAGE 580 (31).
- 5

10.00’ WIDE EASEMENT FOR ROAD PURPOSES RECORDED JULY 26, 1945 IN BOOK 1318, PAGE 525.
- 6

DEANE DEVELOPMENT CO., HOLDS A 20.00’ WIDE EASEMENT FOR UNDERGROUND SEWER, DRAINAGE, WATER AMD PUBLIC UTILITIES RECORDED JULY 3, 1979 IN BOOK 13215, PAGE 531 (R47).
- 7

RIGHT OF WAY FOR SLOPE PURPOSES PER INST. NO. 1990–143429 O.R. (R46).
- 8

RIGHT OF WAY FOR SLOPE PURPOSES PER INST. NO. 1991–021387 O.R. (R47).
- 9

PARCEL 101.4 OF EASEMENT FOR SLOPE AND DRAINAGE PURPOSES RECORDED AUGUST 31, 1979 IN BOOK 13293, PAGE 1963.
- 10

PARCEL 101.11 EASEMENT FOR SLOPE PURPOSES RECORDED AUGUST 31, 1979 IN BOOK 13293, PAGE 1963.
- 11

50.00' WIDE EASEMENT FOR ROAD PURPOSES PER INST. NO. 2008–000290252 O.R. (R50).
- 12

20.00' WIDE EASEMENT FOR SEWER PURPOSES RECORDED AUGUST 29, 1990 INST. NO. 90–462168 O.R. (R51)
- 13

EASEMENT HELD BY THE COUNTY OF ORANGE FOR WATER LINE PURPOSES, TRASH COLLECTION, FIRE RESCUE, AND EMERGENCY SERVICES DEDICATED PER MM 537/34–39. (R4).
- 14

PARCEL 102.3 OF EASEMENT FOR SLOPE AND DRAINAGE PURPOSES RECORDED JANUARY 31, 1980 IN BOOK 13486, PAGE 1458.
- 15

10.00' WIDE EASEMENT FOR SANITARY SEWER PURPOSES DEDICATED PER MM 335/48–50. (R11).
- 16

10.00' WIDE EASEMENT FOR WATER LINE PURPOSES DEDICATED PER MM 335/48–50. (R11).
- 17

LOT A DESIGNATED AS A SPACE FOR PRIVATE PARK PURPOSES PER MM 537/34–39 (R4).
- 18

10.00' WIDE EASEMENT FOR DRAINAGE PURPOSES DEDICATED PER MM 335/48–50. (R11).
- 19

PARCEL 162.1 OF EASEMENT FOR SLOPE AND DRAINAGE PURPOSES RECORDED NOVEMBER 13, 1989 IN INST. 89–608884 O.R.

REFERENCES (REFERENCES CONTAIN LIVE HYPERLINKS)

- (R1) = RECORD OF SURVEY RSB 194/1–16
- (R2) = TRACT NO. 8489, M.M. 671/9–11
- (R3) = TRACT NO. 10570, M.M. 464/32–35
- (R4) = TRACT NO. 11497, M.M. 537/34–39
- (R5) = PARCEL MAP P.M.B. 132/46–49
- (R6) = SM 71–7B
- (R7) = TRACT NO. 4130, M.M. 180/32–33
- (R8) = PARCEL MAP P.M.B. 39/25
- (R9) = PARCEL MAP P.M.B. 98/11
- (R10) = CSTB 138/47–52
- (R11) = TRACT NO. 7723, M.M. 335/48–50
- (R12) = PARCEL MAP P.M.B. 356/8–12
- (R14) = TRACT NO. 732, M.M. 31/37–38
- (R15) = CORNER RECORD, C.R. 2019–1907
- (R16) = TRACT NO. 6208, M.M. 378/1–2
- (R17) = RECORD OF SURVEY RSB 114/28
- (R18) = RECORD PER BOOK 13486, PAGE 1458 O.R.
- (R19) = RECORD PER INST. NO. 1994–0389373 O.R.
- (R20) = RECORD PER INST. NO. 1996–0346961 O.R.
- (R21) = O.C.S. ALIGNMENT NOTE A/NE/IRV, PG. 1213–1220
- (R22) = CORNER RECORD, C.R. 2012–2280
- (R23) = RECORD OF SURVEY RSB 20/11
- (R24) = PARCEL MAP P.M.B. 103/7–8
- (R25) = RECORD OF SURVEY RSB 233/28
- (R26) = O.C.S. ALIGNMENT NOTE A/4–9/2235–2247
- (R27) = O.C.S. ALIGNMENT NOTE A/4–9/547–553
- (R28) = O.C.S. ALIGNMENT NOTE A/4–9/979–992
- (R29) = CORNER RECORD, C.R. 2010–0786

REFERENCES (REFERENCES CONTAIN LIVE HYPERLINKS)

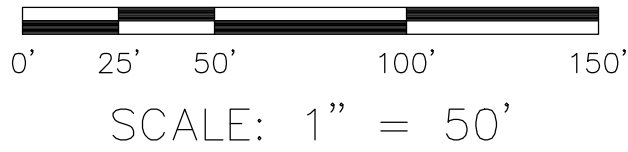
- (R30) = RECORD PER INST. NO. 2011–603896 O.R.
- (R31) = RECORD PER BOOK 2658, PAGE 580 O.R.
- (R32) = PARCEL MAP P.M.B. 30/38–39
- (R33) = RECORD PER BOOK 9068, PAGE 750 O.R.
- (R34) = RECORD OF SURVEY RSB 152/21–26
- (R35) = TRACT NO. 3556, M.M. 374/33–34
- (R36) = RECORD PER INST. NO. 1991–105258 O.R.
- (R37) = RECORD PER INST. NO. 1994–0322838 O.R.
- (R38) = RECORD PER INST. NO. 1991–238100 O.R.
- (R39) = RECORD PER INST. NO. 1991–670385 O.R.
- (R40) = TRACT NO. 5646, M.M. 315/29–31
- (R41) = RECORD PER INST. NO. 1990–305182 O.R.
- (R42) = RECORD PER INST. NO. 1992–178312 O.R.
- (R43) = RECORD PER INST. NO. 1990–211104 O.R.
- (R44) = RECORD PER INST. NO. 1991–021387 O.R.
- (R45) = RECORD PER INST. NO. 1992–400700 O.R.
- (R46) = RECORD PER INST. NO. 1990–143429 O.R.
- (R47) = RECORD PER BOOK 13215, PAGE 531 O.R.
- (R48) = RECORD PER INST. NO. 1990–415100 O.R.
- (R49) = RECORD OF SURVEY RSB 234/9–10
- (R50) = RECORD PER INST. NO. 2008–000290252 O.R.
- (R51) = RECORD PER INST. NO. 1990–462168 O.R.
- (R52) = RECORD PER INST. NO. 89–608884 O.R.
- (R53) = RECORD PER BOOK 13293, PAGE 1963 O.R.

		COUNTY OF ORANGE OC PUBLIC WORKS OC SURVEY/FIELD SERVICES/BOUNDARY ANALYSIS & MAPPING			
		CRAWFORD CANYON ROAD SIDEWALK EXTENSION PHASE II			
		BOUNDARY MAP			
		PROJECT LIMITS: FROM NEWPORT BLVD. TO EL ROY DR. ALONG CRAWFORD CANYON RD. AND FROM 240' NE'LY OF HYDE DR. TO CRAWFORD CANYON RD. ALONG NEWPORT BLVD.			
		DATE OF SURVEY: 01/19/2023		BY: J. RUSSO & PARTY	
		MAPPING		BY: P. MAGUIRE	
		OFFICE CHECK		BY: M. KUBISTY, PLS	
		FIELD CHECK		BY: J. RUSSO & PARTY	
		SCALE: N.T.S.		FILE # 1920PW-IN0029	
		FILE: CRAWFORD_CANYON_ROAD_SIDEWALK_EXTENSION_BOUNDARY_2023.DWG			

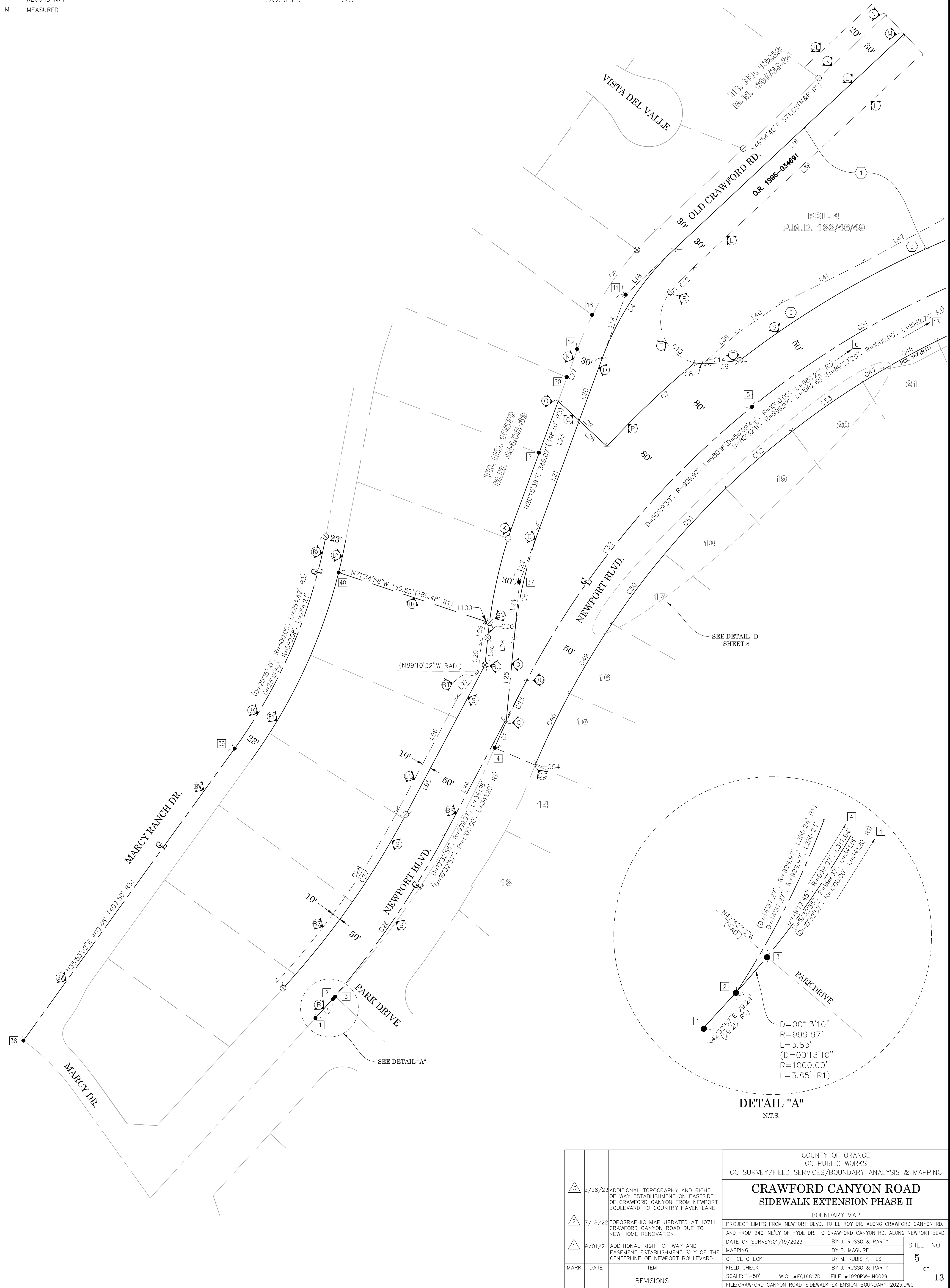
LINE WORK SHOWN HEREIN THAT IS NOT BOLDED TEXT, AND IS NOT ANNOTATED IS FOR GRAPHICAL REPRESENTATION ONLY.

REFERENCE DOCUMENTS IN THE REFERENCE LEGEND ARE LIVE HYPERLINKS TO SAID DOCUMENT.

● FOUND MONUMENT AS NOTED
 ⊗ SEARCHED, NOTHING FOUND / S.N.F.
 CR CALC FROM RECORD MAP
 R RECORD MAP
 M MEASURED



OC Public Works
OC Survey/Field Services
Boundary Analysis & Mapping



SEE SHEET 7

NOTES

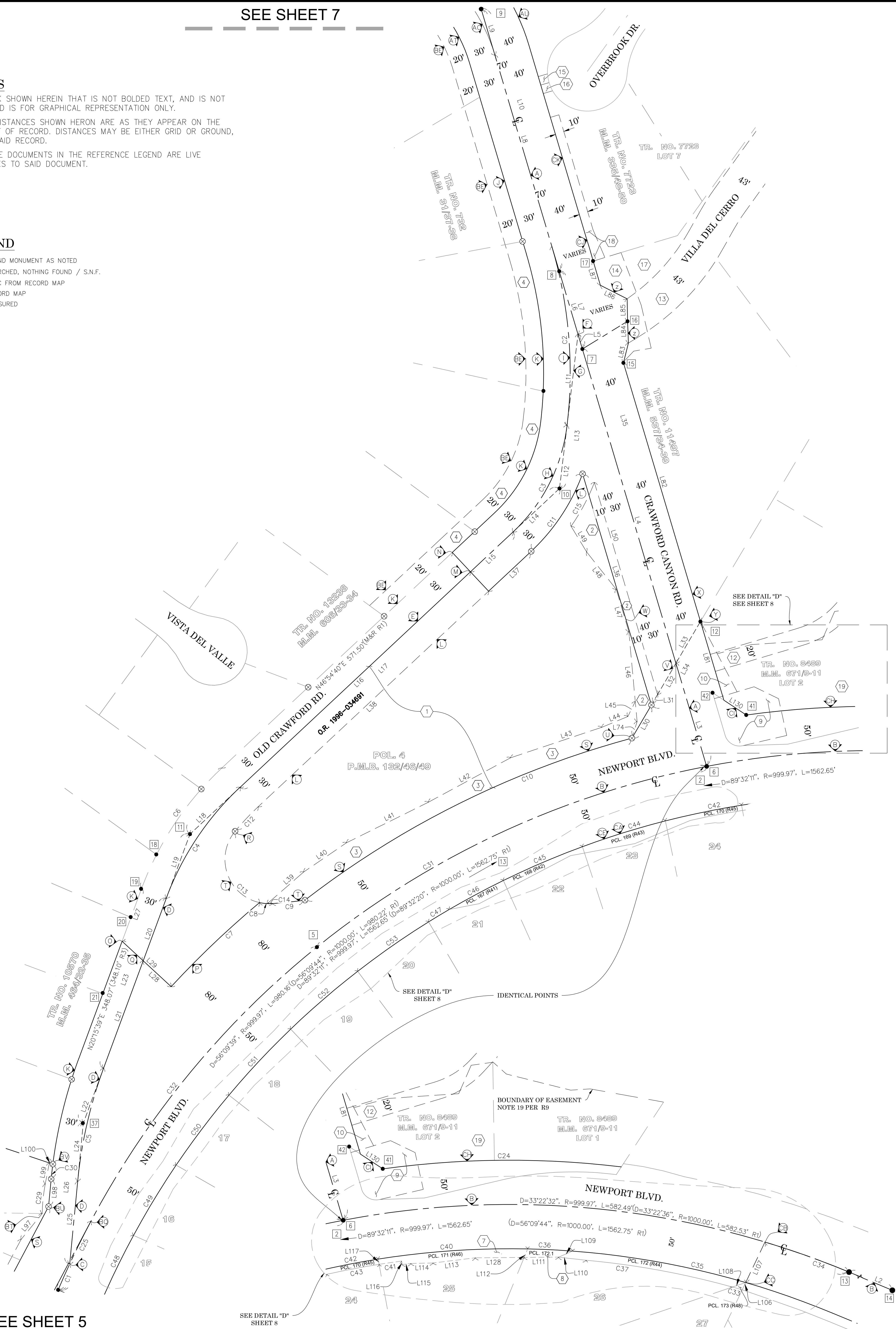
LINE WORK SHOWN HEREIN THAT IS NOT BOLDDED TEXT, AND IS NOT ANNOTATED IS FOR GRAPHICAL REPRESENTATION ONLY.

RECORD DISTANCES SHOWN HERON ARE AS THEY APPEAR ON THE DOCUMENT OF RECORD. DISTANCES MAY BE EITHER GRID OR GROUND, AS PER SAID RECORD.

REFERENCE DOCUMENTS IN THE REFERENCE LEGEND ARE LIVE HYPERLINKS TO SAID DOCUMENT.

LEGEND

- FOUND MONUMENT AS NOTED
- ⊗ SEARCHED, NOTHING FOUND / S.N.F.
- CR CALC. FROM RECORD MAP
- R RECORD MAP
- M MEASURED



SEE SHEET 5

0' 25' 50' 100' 150'

SCALE: 1" = 50'

U.S. Survey Foot

OC Public Works
OC Survey/Field Services
Boundary Analysis & Mapping

		COUNTY OF ORANGE OC PUBLIC WORKS OC SURVEY/FIELD SERVICES/BOUNDARY ANALYSIS & MAPPING	
		CRAWFORD CANYON ROAD SIDEWALK EXTENSION PHASE II	
		BOUNDARY MAP	
		PROJECT LIMITS: FROM NEWPORT BLVD. TO EL ROY DR. ALONG CRAWFORD CANYON RD. AND FROM 240' N.E.L.Y OF HYDE DR. TO CRAWFORD CANYON RD. ALONG NEWPORT BLVD.	
3		2/28/23	ADDITIONAL TOPOGRAPHY AND RIGHT OF WAY ESTABLISHMENT ON EASTSIDE OF CRAWFORD CANYON FROM NEWPORT BOULEVARD TO COUNTRY HAVEN LANE
2		7/18/22	TOPOGRAPHIC MAP UPDATED AT 10711 CRAWFORD CANYON ROAD DUE TO NEW HOME RENOVATION
1		9/01/21	ADDITIONAL RIGHT OF WAY AND EASEMENT ESTABLISHMENT S'LY OF THE CENTERLINE OF NEWPORT BOULEVARD
MARK	DATE	ITEM	
		REVISIONS	
		DATE: OF SURVEY: 01/19/2023	
		MAPPING	
		OFFICE CHECK	
		FIELD CHECK	
		SCALE: 1"=50'	
		W.O. #EQ19817D	
		FILE #1920PW-IN0029	
		FILE: CRAWFORD CANYON ROAD_SIDEWALK EXTENSION_BOUNDARY_2023.DWG	
		BY: J. RUSSO & PARTY	
		BY: P. MAGUIRE	
		BY: M. KUBISTY, PLS	
		BY: J. RUSSO & PARTY	
		SHEET NO.	
		6	
		of	
		13	

NOTES

LINE WORK SHOWN HEREIN THAT IS NOT BOLDED TEXT, AND IS NOT ANNOTATED IS FOR GRAPHICAL REPRESENTATION ONLY.

RECORD DISTANCES SHOWN HERON ARE AS THEY APPEAR ON THE DOCUMENT OF RECORD. DISTANCES MAY BE EITHER GRID OR GROUND, AS PER SAID RECORD.

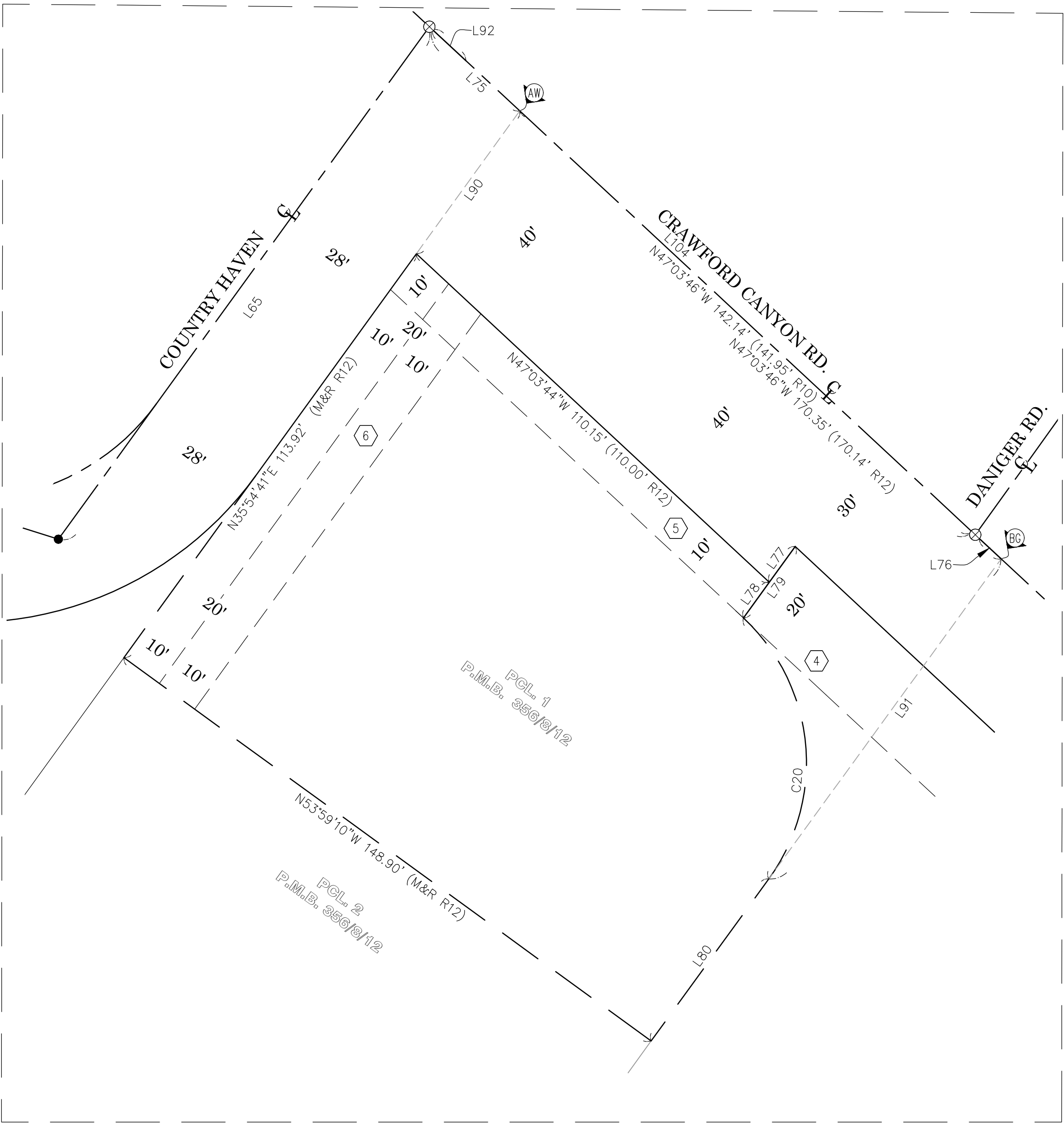
REFERENCE DOCUMENTS IN THE REFERENCE LEGEND ARE LIVE HYPERLINKS TO SAID DOCUMENT.

LEGEND

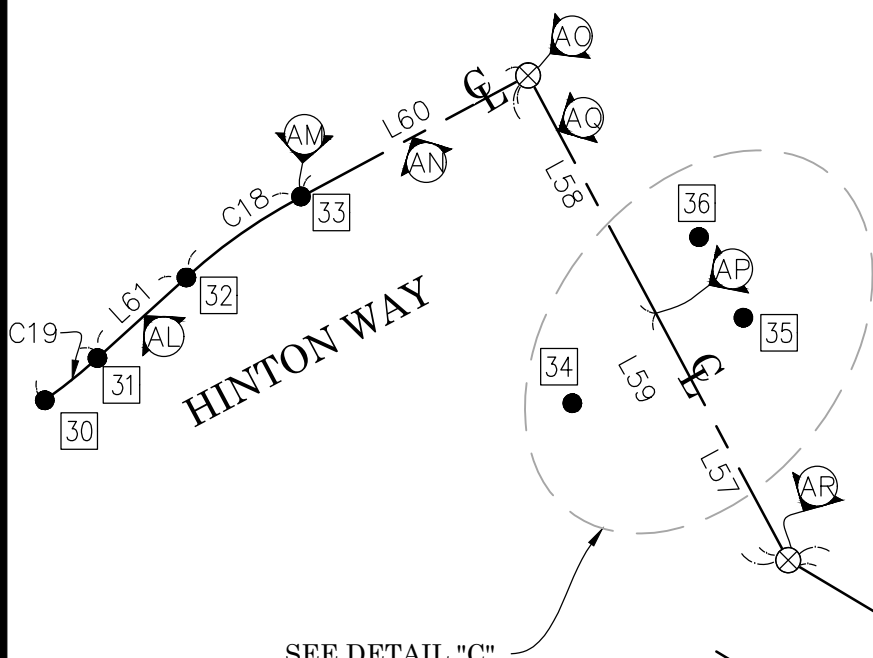
- FOUND MONUMENT AS NOTED
- ⊗ SEARCHED, NOTHING FOUND / S.N.F.
- CR CALC. FROM RECORD MAP
- R RECORD MAP
- M MEASURED

U.S. *Survey Foot*

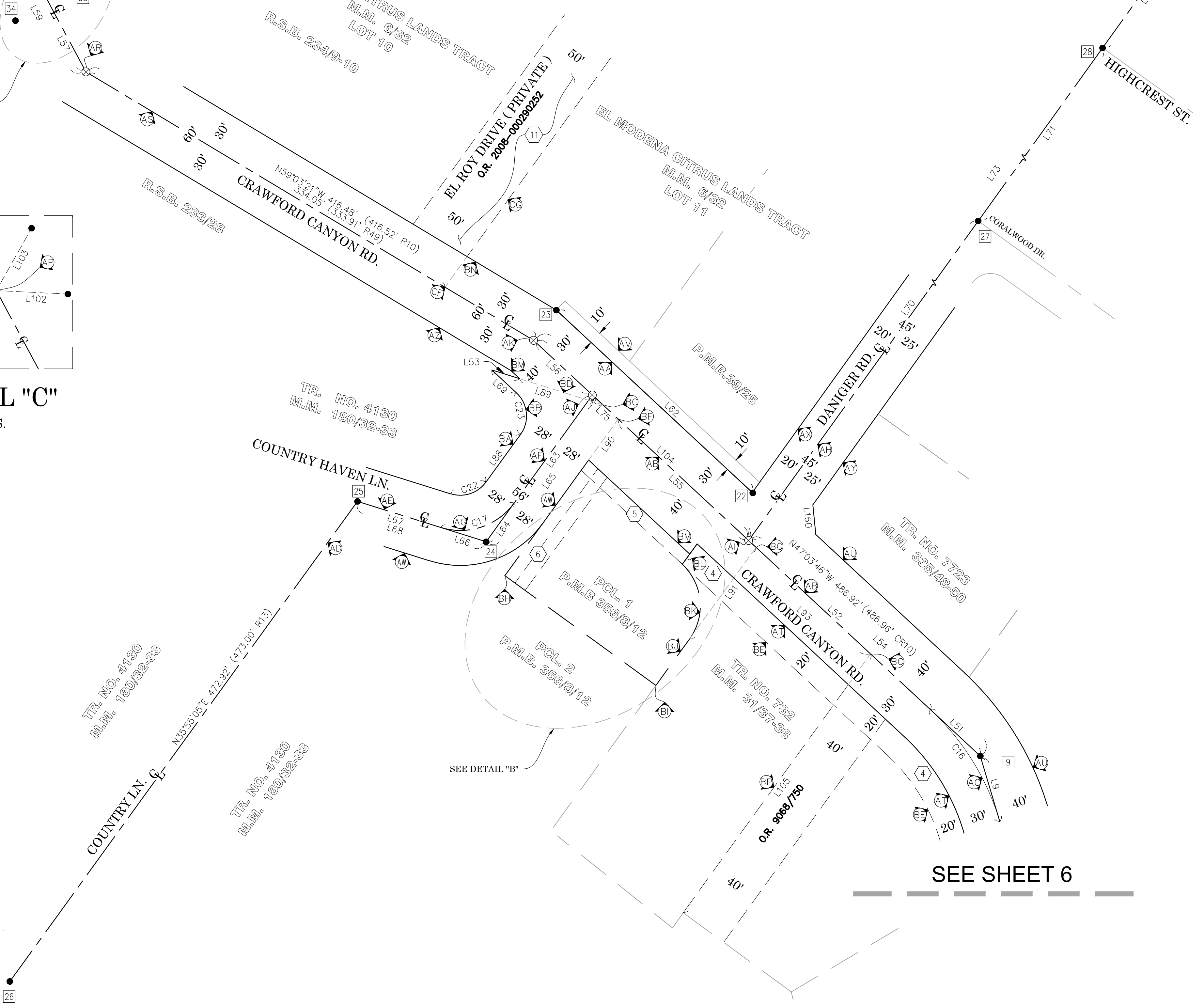
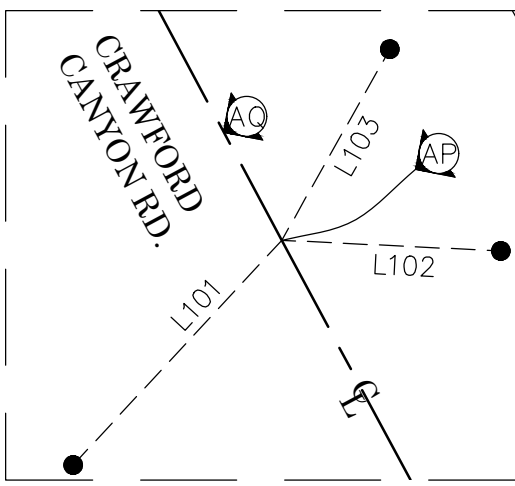
OC Public Works
OC Survey/Field Services
Boundary Analysis & Mapping



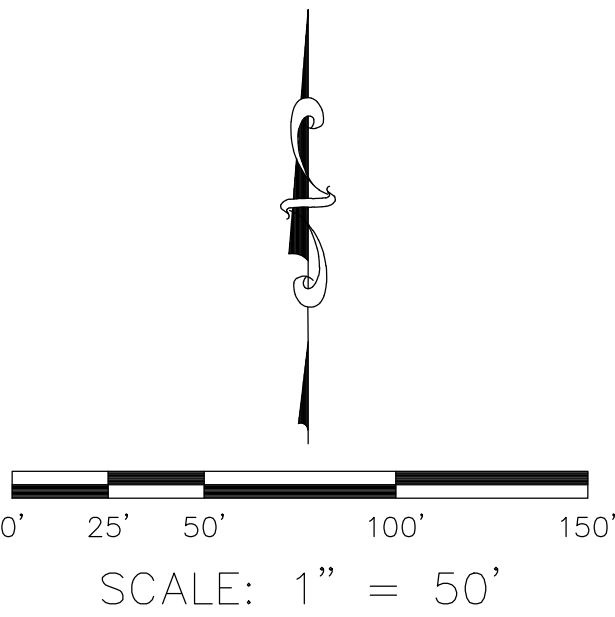
DETAIL "B"
N.T.S.



DETAIL "C"
N.T.S.



SEE SHEET 6



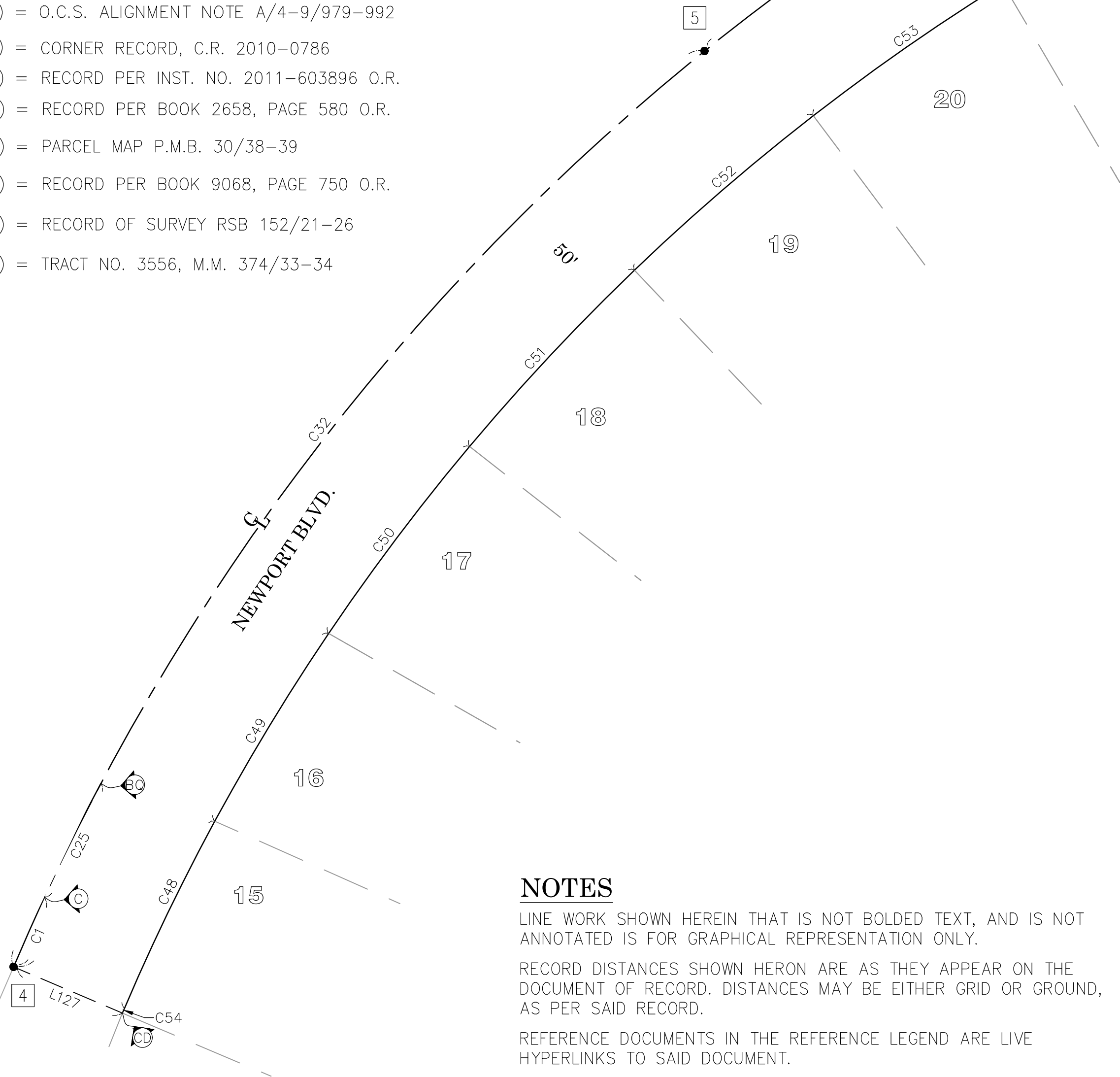
		COUNTY OF ORANGE OC PUBLIC WORKS OC SURVEY/FIELD SERVICES/BOUNDARY ANALYSIS & MAPPING	
		CRAWFORD CANYON ROAD SIDEWALK EXTENSION PHASE II	
		BOUNDARY MAP	
		PROJECT LIMITS: FROM NEWPORT BLVD. TO EL ROY DR. ALONG CRAWFORD CANYON RD. AND FROM 240' NE'LY OF HYDE DR. TO CRAWFORD CANYON RD. ALONG NEWPORT BLVD.	
		DATE OF SURVEY: 01/19/2023	BY: J. RUSSO & PARTY
		MAPPING	BY: P. MAGUIRE
		OFFICE CHECK	BY: M. KUBISTY, PLS
		FIELD CHECK	BY: J. RUSSO & PARTY
		SCALE: 1"=50'	W.O. #E019817D
			FILE #1920PW-IN0029
		FILE: CRAWFORD_CANYON_ROAD_SIDEWALK_EXTENSION_BOUNDARY_2023.DWG	
3	2/28/23	ADDITIONAL TOPOGRAPHY AND RIGHT OF WAY ESTABLISHMENT ON EASTSIDE OF CRAWFORD CANYON ROAD DUE TO NEWPORT BOULEVARD TO COUNTRY HAVEN LANE	
2	7/18/22	TOPOGRAPHIC MAP UPDATED AT 10711 CRAWFORD CANYON ROAD DUE TO NEW HOME RENOVATION	
1	9/01/21	ADDITIONAL RIGHT OF WAY AND EASEMENT ESTABLISHMENT S'LY OF THE CENTERLINE OF NEWPORT BOULEVARD	
MARK	DATE	ITEM	
REVISIONS			
		SHEET NO. 7 of 13	

REFERENCES (REFERENCES CONTAIN LIVE HYPERLINKS)

- (R1) = RECORD OF SURVEY RSB 194/1-16
(R2) = TRACT NO. 8489, M.M. 671/9-11
(R3) = TRACT NO. 10570, M.M. 464/32-35
(R4) = TRACT NO. 11497, M.M. 537/34-39
(R5) = PARCEL MAP P.M.B. 132/46-49
(R6) = SM 71-7B
(R7) = TRACT NO. 4130, M.M. 180/32-33
(R8) = PARCEL MAP P.M.B. 39/25
(R9) = PARCEL MAP P.M.B. 98/11
(R10) = CSTB 138/47-52
(R11) = TRACT NO. 7723, M.M. 335/48-50
(R12) = PARCEL MAP P.M.B. 356/8-12
(R14) = TRACT NO. 732, M.M. 31/37-38
(R15) = CORNER RECORD, C.R. 2019-1907
(R16) = TRACT NO. 6208, M.M. 378/1-2
(R17) = RECORD OF SURVEY RSB 114/28
(R18) = RECORD PER BOOK 13486, PAGE 1458 O.R.
(R19) = RECORD PER INST. NO. 1994-0389373 O.R.
(R20) = RECORD PER INST. NO. 1996-0346961 O.R.
(R21) = O.C.S. ALIGNMENT NOTE A/NE/IRV, PG. 1213-1220
(R22) = CORNER RECORD, C.R. 2012-2280
(R23) = RECORD OF SURVEY RSB 20/11
(R24) = PARCEL MAP P.M.B. 103/7-8
(R25) = RECORD OF SURVEY RSB 233/28
(R26) = O.C.S. ALIGNMENT NOTE A/4-9/2235-2247
(R27) = O.C.S. ALIGNMENT NOTE A/4-9/547-553
(R28) = O.C.S. ALIGNMENT NOTE A/4-9/979-992
(R29) = CORNER RECORD, C.R. 2010-0786
(R30) = RECORD PER INST. NO. 2011-603896 O.R.
(R31) = RECORD PER BOOK 2658, PAGE 580 O.R.
(R32) = PARCEL MAP P.M.B. 30/38-39
(R33) = RECORD PER BOOK 9068, PAGE 750 O.R.
(R34) = RECORD OF SURVEY RSB 152/21-26
(R35) = TRACT NO. 3556, M.M. 374/33-34

REFERENCES (REFERENCES CONTAIN LIVE HYPERLINKS)

- (R36) = RECORD PER INST. NO. 1991-105258 O.R.
(R37) = RECORD PER INST. NO. 1994-0322838 O.R.
(R38) = RECORD PER INST. NO. 1991-238100 O.R.
(R39) = RECORD PER INST. NO. 1991-670385 O.R.
(R40) = TRACT NO. 5646, M.M. 315/29-31
(R41) = RECORD PER INST. NO. 1990-305182 O.R.
(R42) = RECORD PER INST. NO. 1992-178312 O.R.
(R43) = RECORD PER INST. NO. 1990-211104 O.R.
(R44) = RECORD PER INST. NO. 1991-021387 O.R.
(R45) = RECORD PER INST. NO. 1992-400700 O.R.
(R46) = RECORD PER INST. NO. 1990-143429 O.R.
(R47) = RECORD PER BOOK 13215, PAGE 531 O.R.
(R48) = RECORD PER INST. NO. 1990-415100 O.R.
(R49) = RECORD OF SURVEY RSB 234/9-10
(R50) = RECORD PER INST. NO. 2008-000290252 O.R.
(R51) = RECORD PER INST. NO. 1990-462168 O.R.
(R52) = RECORD PER INST. NO. 89-608884 O.R.
(R53) = RECORD PER BOOK 13293, PAGE 1963 O.R.



NOTES

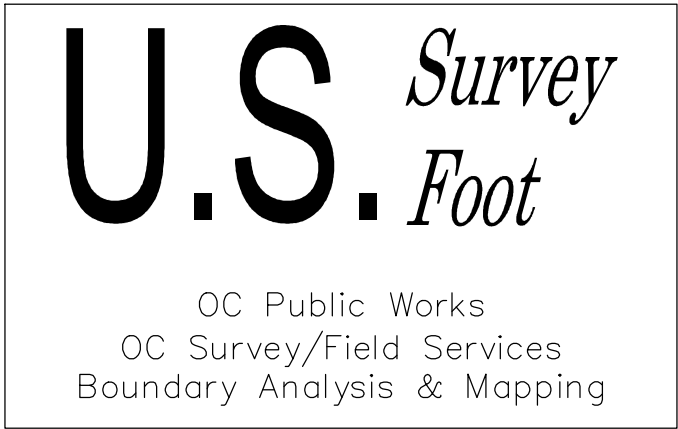
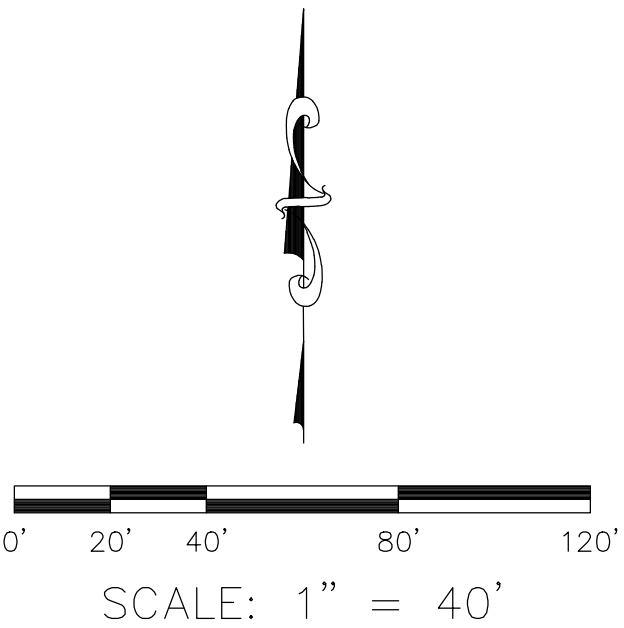
LINE WORK SHOWN HEREIN THAT IS NOT BOLDDED TEXT, AND IS NOT ANNOTATED IS FOR GRAPHICAL REPRESENTATION ONLY.
RECORD DISTANCES SHOWN HERON ARE AS THEY APPEAR ON THE DOCUMENT OF RECORD. DISTANCES MAY BE EITHER GRID OR GROUND, AS PER SAID RECORD.
REFERENCE DOCUMENTS IN THE REFERENCE LEGEND ARE LIVE HYPERLINKS TO SAID DOCUMENT.

EASEMENT NOTES

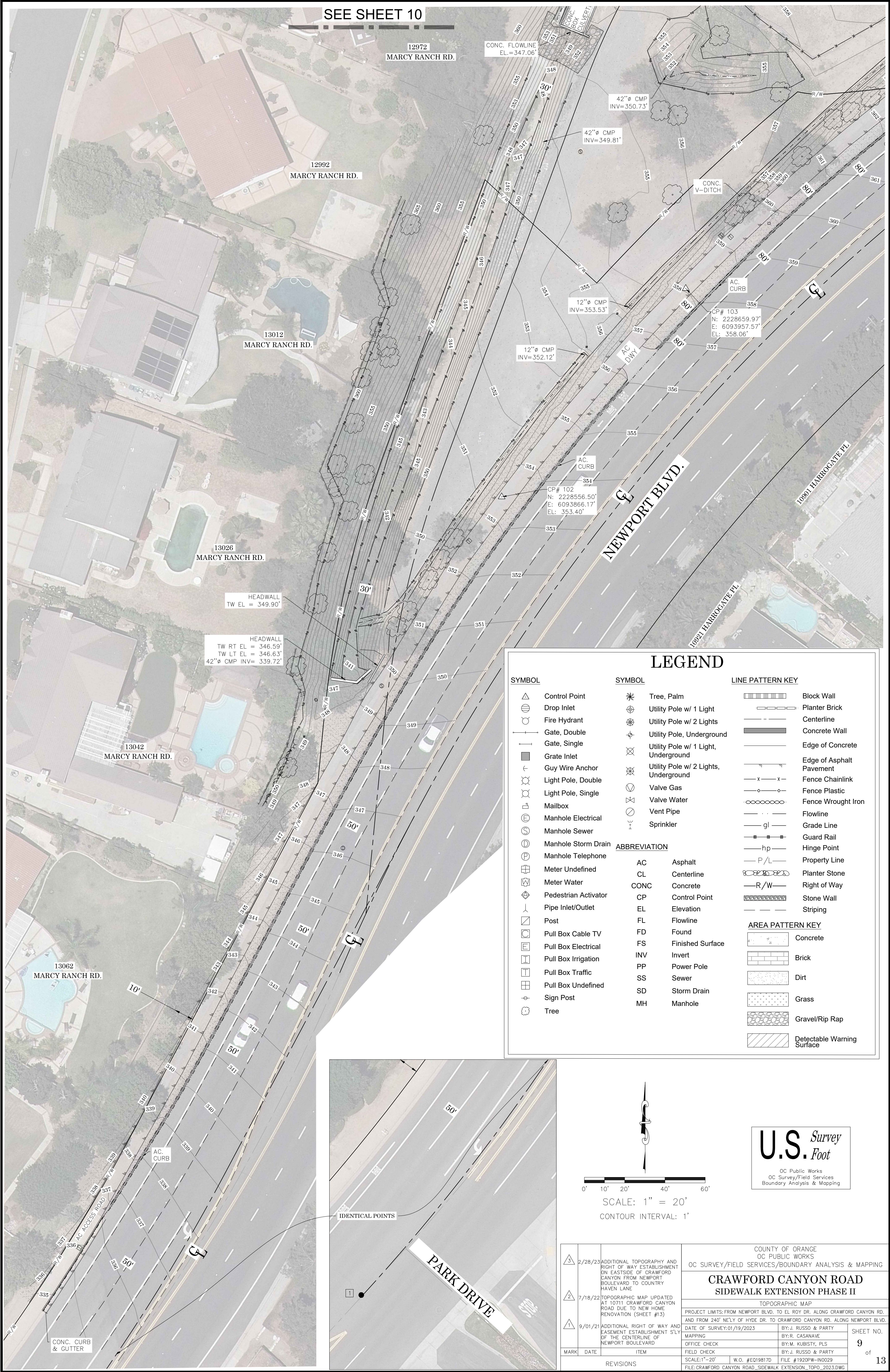
- 1 O.R. 2011-603896 GRANT DEED TO ORANGE COUNTY DATED 11/29/2011 (R30).
2 RIGHT OF WAY FOR SLOPE PURPOSES PER INST. 13486/1458 O.R. (R18).
3 RIGHT OF WAY FOR SLOPE & DRAINAGE PURPOSES PER INST. 94-0389373 O.R. (R19).
4 PARCEL 2 OF GRANT DEED A 20.00' WIDE EASEMENT FOR ROAD PURPOSES RECORDED JANUARY 28, 1954 IN BOOK 2658, PAGE 580 (31).
5 10.00' WIDE EASEMENT FOR ROAD PURPOSES RECORDED JULY 26, 1945 IN BOOK 1318, PAGE 525.
6 DEANE DEVELOPMENT CO. HOLDS A 20.00' WIDE EASEMENT FOR UNDERGROUND SEWER, DRAINAGE, WATER AMD PUBLIC UTILITIES RECORDED JULY 3, 1979 IN BOOK 13215, PAGE 531 (R47).
7 RIGHT OF WAY FOR SLOPE PURPOSES PER INST. NO. 1990-143429 O.R. (R46).
8 RIGHT OF WAY FOR SLOPE PURPOSES PER INST. NO. 1991-021387 O.R. (R47).
9 PARCEL 101.4 OF EASEMENT FOR SLOPE AND DRAINAGE PURPOSES RECORDED AUGUST 31, 1979 IN BOOK 13293, PAGE 1963 (R2).
10 PARCEL 101.11 OF EASEMENT FOR SLOPE PURPOSES RECORDED AUGUST 31, 1979 IN BOOK 13293, PAGE 1963 (R2).
11 50.00' WIDE EASEMENT FOR ROAD PURPOSES PER INST. NO. 2008-000290252 O.R. (R50).
12 20.00' WIDE EASEMENT FOR SEWER PURPOSES RECORDED AUGUST 29,1990 INST. NO. 90-462168 O.R.
13 EASEMENT HELD BY THE COUNTY OF ORANGE FOR WATER LINE PURPOSES, TRASH COLLECTION, FIRE RESCUE, AND EMERGENCY SERVICES DEDICATED PER MM 537/34-39. (R4).
14 PARCEL 102.3 OF EASEMENT FOR SLOPE AND DRAINAGE PURPOSES RECORDED JANUARY 31, 1980 IN BOOK 13486, PAGE 1458 (R4).
15 10.00' WIDE EASEMENT FOR SANITARY SEWER PURPOSES DEDICATED PER MM 335/48-50. (R11).
16 10.00' WIDE EASEMENT FOR WATER LINE PURPOSES DEDICATED PER MM 335/48-50. (R11).
17 LOT A DESIGNATED AS A SPACE FOR PRIVATE PARK PURPOSES PER MM 537/34-39 (R4).
18 10.00' WIDE EASEMENT FOR DRAINAGE PURPOSES DEDICATED PER MM 335/48-50. (R11).
19 PARCEL 162.1 OF EASEMENT FOR SLOPE AND DRAINAGE PURPOSES RECORDED NOVEMBER 13, 1989 IN INST. 89-608884 O.R. (R9).

LEGEND

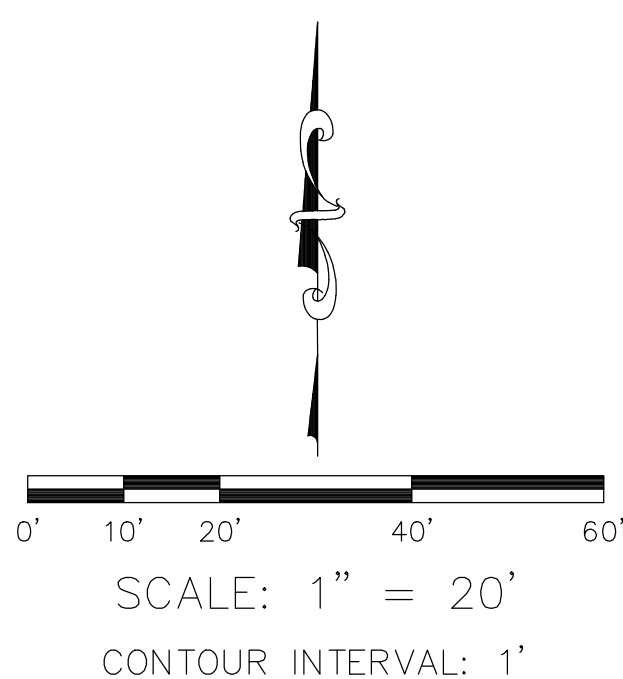
- FOUND MONUMENT AS NOTED
⊗ SEARCHED, NOTHING FOUND / S.N.F.
CR CALC FROM RECORD MAP
R RECORD MAP
M MEASURED



			COUNTY OF ORANGE OC PUBLIC WORKS OC SURVEY/FIELD SERVICES/BOUNDARY ANALYSIS & MAPPING		
			CRAWFORD CANYON ROAD SIDEWALK EXTENSION PHASE II		
			BOUNDARY MAP		
			PROJECT LIMITS: FROM NEWPORT BLVD. TO EL ROY DR. ALONG CRAWFORD CANYON RD. AND FROM 240' NE'LY OF HYDE DR. TO CRAWFORD CANYON RD. ALONG NEWPORT BLVD.		
			DATE OF SURVEY: 01/19/2023	BY: J. RUSSO & PARTY	SHEET NO. 8 of 13
			MAPPING	BY: P. MAGUIRE	
			OFFICE CHECK	BY: M. KUBISTY, PLS	
			FIELD CHECK	BY: J. RUSSO & PARTY	
MARK	DATE	ITEM	SCALE: 1" = 40' W.O. #EQ19817D FILE #1920PW-IN0029		
			FILE: CRAWFORD_CANYON_ROAD_SIDEWALK_EXTENSION_BOUNDARY_2023.DWG		
			REVISIONS		

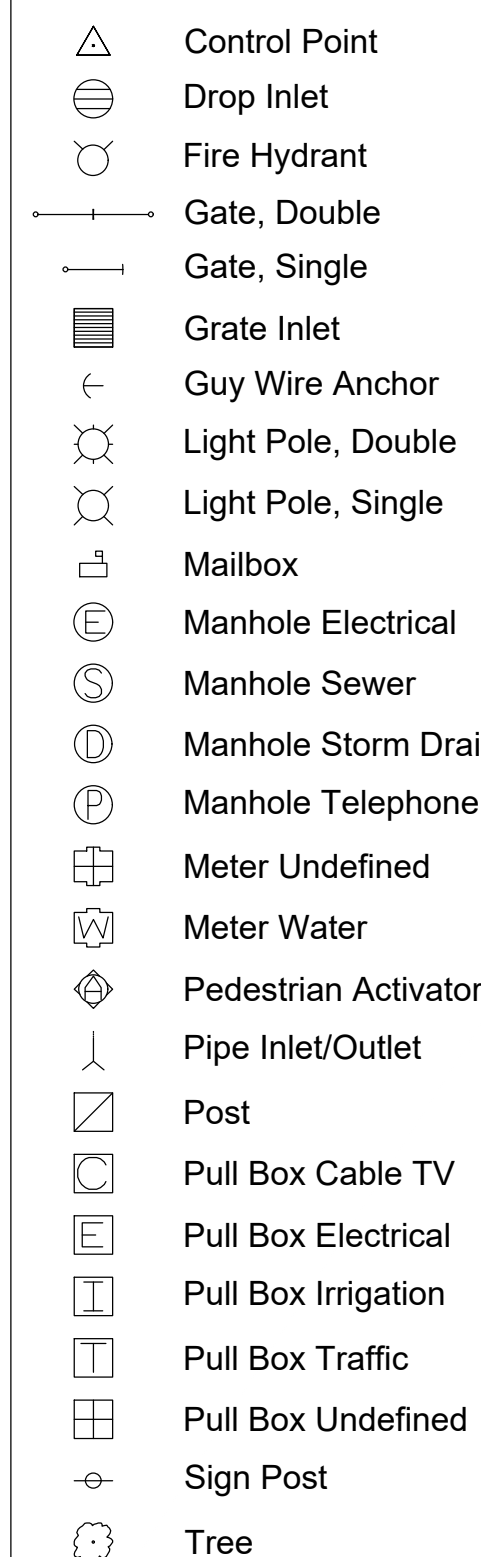


OC Public Works
OC Survey/Field Services
Boundary Analysis & Mapping

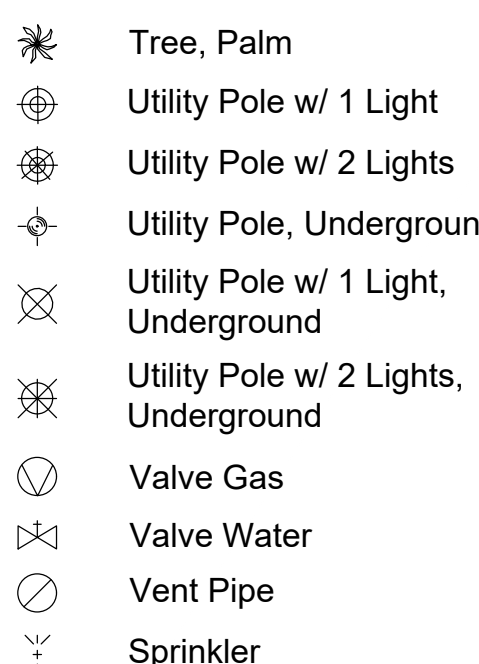


LEGEND

SYMBOL



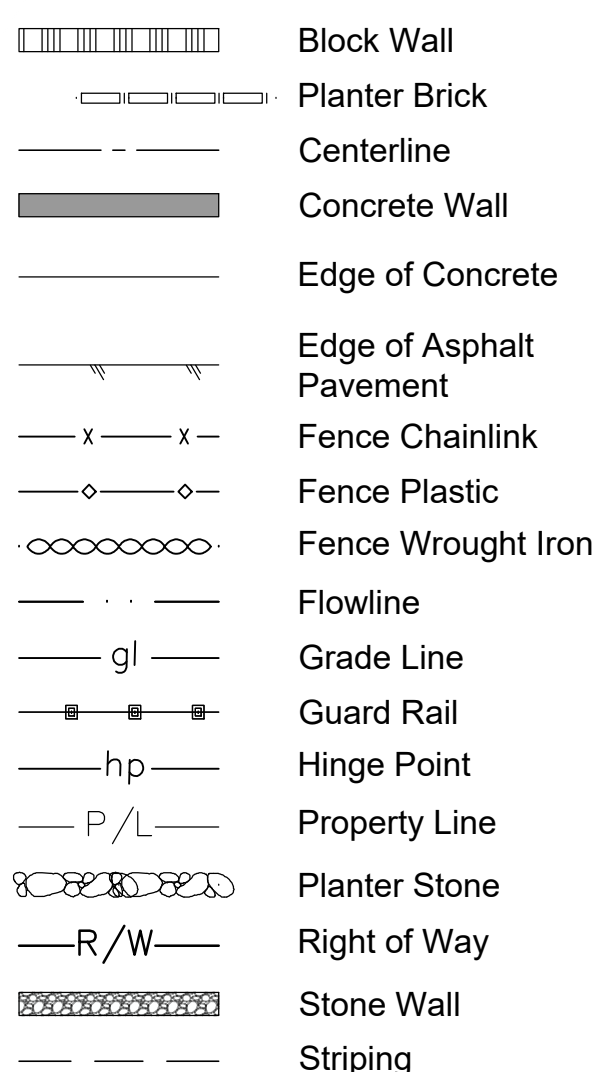
SYMBOL



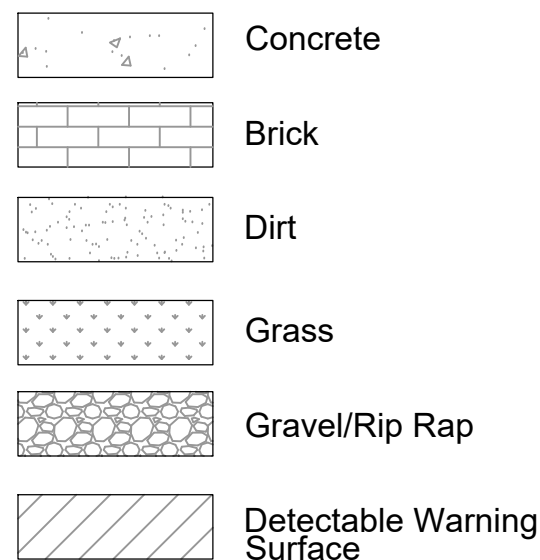
ABBREVIATION

AC	Asphalt
CL	Centerline
CONC	Concrete
CP	Control Point
EL	Elevation
FL	Flowline
FD	Found
FS	Finished Surface
INV	Invert
PP	Power Pole
SS	Sewer
SD	Storm Drain
MH	Manhole

LINE PATTERN KEY



AREA PATTERN KEY



12962

MARCY RANCH RD.

R1652 ϕ RCP PIPE OUTLET
INV EL = 372.72'

28" SSMH
RIM EL=363.10'

28" SDMH
RIM EL=359.67'

28" SSMH
RIM EL=36

47"Ø CONC. PIPE
EL=349.15'

CONC. FLOWLINE
EL.=347.06'

42"Ø CMP
NV=350.73'

42"Ø CMP
INV=349.81'

CP# 104
N: 2228753.51
E: 6094061.65
EL: 362.40'

SEE SHEET 9

10861
CRAWFORD CYN RD

10891
CRAWFORD CYN RD.

AC ACCESS
ROAD

HEADWALL
TW EL = 376.6
6"Ø RCP EL=369.4
18"Ø RCP EL=366.6

28" SDMH
RIM EL=369.23'

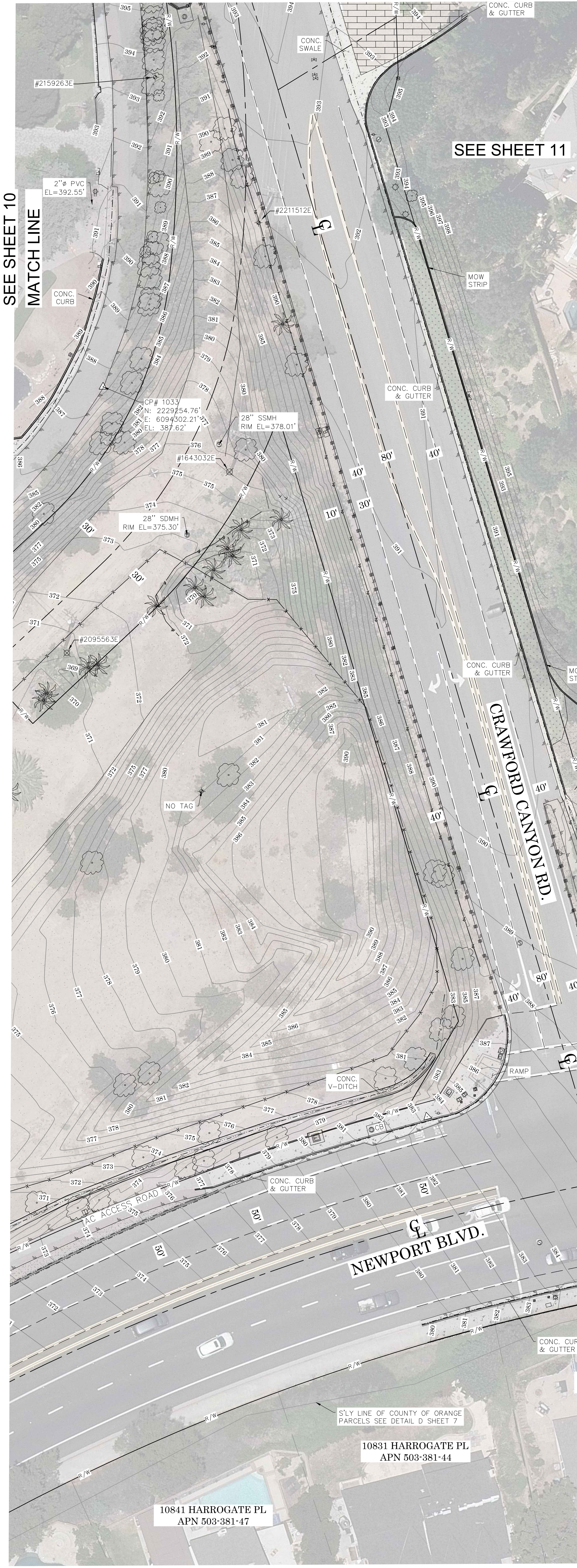
28" SSMH
RIM EL=368.14'

12"Ø CMP
EL=365.11'

12"Ø CMP
EL=363.45'

NEWPORT BLVD.

3	2/28/23	ADDITIONAL TOPOGRAPHY AND RIGHT OF WAY ESTABLISHMENT ON EASTSIDE OF CRAWFORD CANYON FROM NEWPORT BOULEVARD TO COUNTRY HAVEN LANE	COUNTY OF ORANGE OC PUBLIC WORKS OC SURVEY/FIELD SERVICES/BOUNDARY ANALYSIS & MAPPING	CRAWFORD CANYON ROAD SIDEWALK EXTENSION PHASE II	TOPOGRAPHIC MAP PROJECT LIMITS: FROM NEWPORT BLVD. TO EL ROY DR. ALONG CRAWFORD CANYON ROAD AND FROM 240' N.E.L.Y OF HYDE DR. TO CRAWFORD CANYON RD. ALONG NEWPORT BLVD.	DATE OF SURVEY: 01/19/2023 BY: J. RUSSO & PARTY MAPPING BY: R. CASANAVE OFFICE CHECK BY: M. KUBISTY, PLS FIELD CHECK BY: J. RUSSO & PARTY SCALE: 1"=20' W.O. #E019817D FILE #1920PW-IN0029 FILE: CRAWFORD CANYON RD. SIDEWALK EXTENSION TOPO. 2023.DWG	SHEET NO. 10 of 14
	7/18/22	TOPOGRAPHIC MAP UPDATED AT 10711 CRAWFORD CANYON ROAD DUE TO NEW HOME RENOVATION (SHEET #13)					
1	9/01/21	ADDITIONAL RIGHT OF WAY AND EASEMENT ESTABLISHMENT S'LY OF THE CENTERLINE OF NEWPORT BOULEVARD					
MARK	DATE	ITEM	REVISIONS				



SEE SHEET 10
MATCH LINE

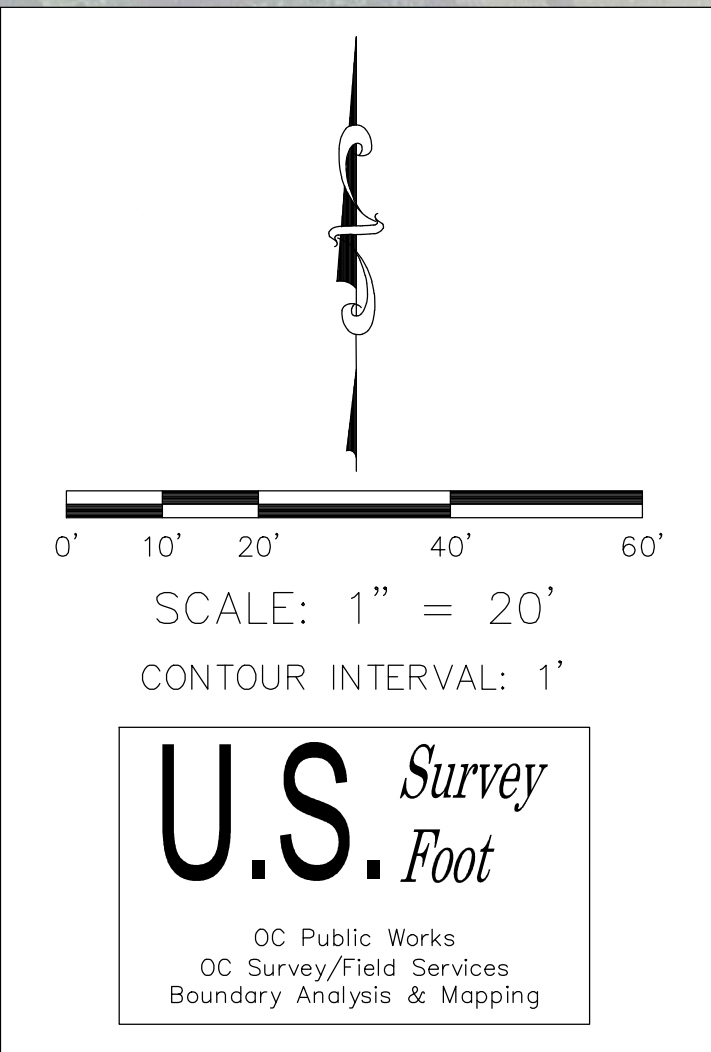
SEE SHEET 11

LEGEND

SYMBOL		SYMBOL		LINE PATTERN KEY	
	Control Point		Tree, Palm		Block Wall
	Drop Inlet		Utility Pole w/ 1 Light		Planter Brick
	Fire Hydrant		Utility Pole w/ 2 Lights		Centerline
	Gate, Double		Utility Pole, Underground		Concrete Wall
	Gate, Single		Utility Pole w/ 1 Light, Underground		Edge of Concrete
	Grate Inlet		Utility Pole w/ 2 Lights, Underground		Edge of Asphalt Pavement
	Guy Wire Anchor		Valve Gas		Fence Chainlink
	Light Pole, Double		Valve Water		Fence Plastic
	Light Pole, Single		Vent Pipe		Fence Wrought Iron
	Mailbox		Sprinkler		Flowline
	Manhole Electrical				Grade Line
	Manhole Sewer				Guard Rail
	Manhole Storm Drain				Hinge Point
	Manhole Telephone				Property Line
	Meter Undefined				Planter Stone
	Meter Water				Right of Way
	Pedestrian Activator				Stone Wall
	Pipe Inlet/Outlet				Striping
	Post				
	Pull Box Cable TV				
	Pull Box Electrical				
	Pull Box Irrigation				
	Pull Box Traffic				
	Pull Box Undefined				
	Sign Post				
	Tree				

ABBREVIATION	
AC	Asphalt
CL	Centerline
CONC	Concrete
CP	Control Point
EL	Elevation
FL	Flowline
FD	Found
FS	Finished Surface
INV	Invert
PP	Power Pole
SS	Sewer
SD	Storm Drain
MH	Manhole

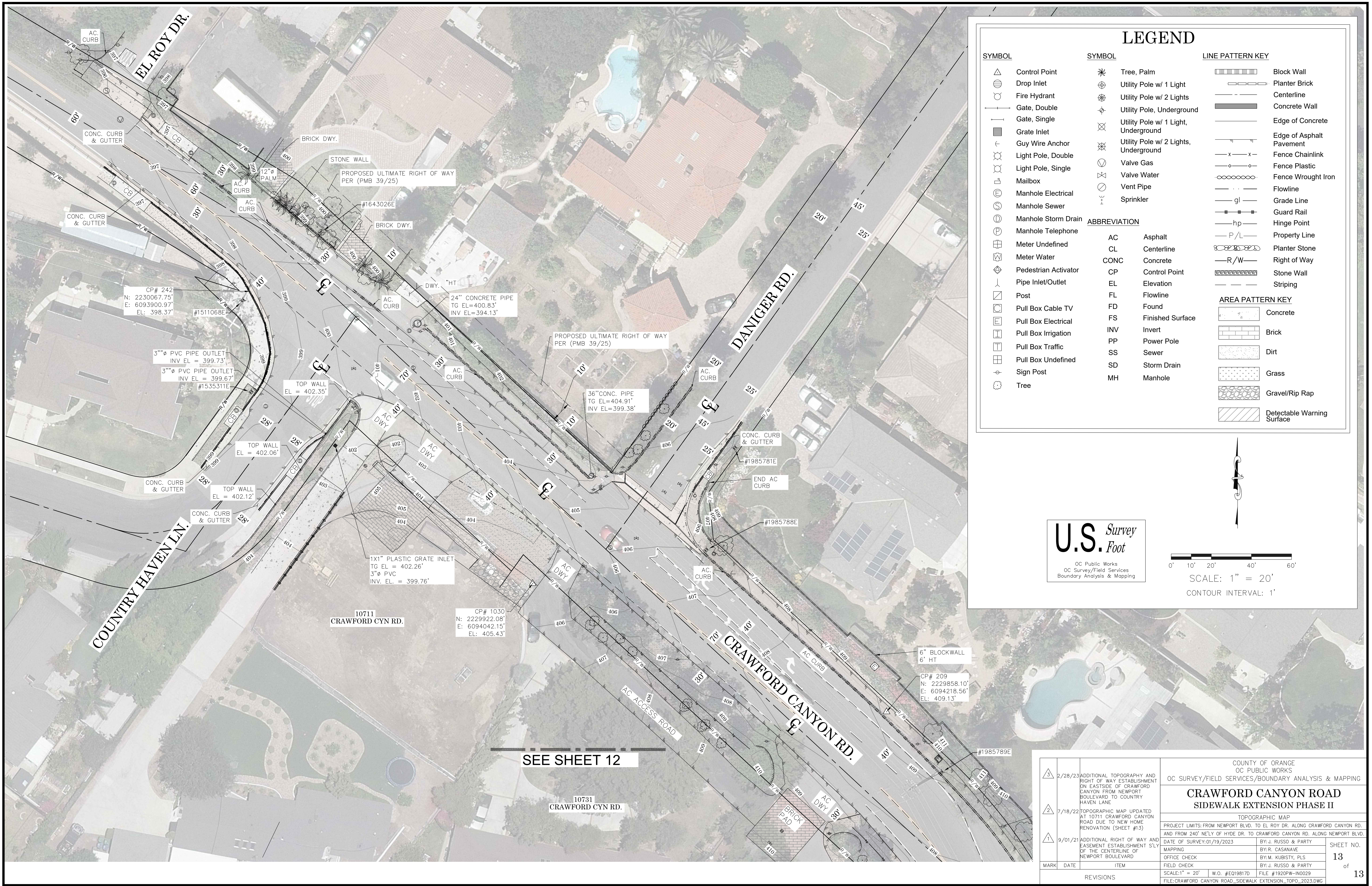
AREA PATTERN KEY	
	Concrete
	Brick
	Dirt
	Grass
	Gravel/Rip Rap
	Detectable Warning Surface



2/28/23		ADDITIONAL TOPOGRAPHY AND RIGHT OF WAY ESTABLISHMENT ON EASTSIDE OF CRAWFORD CANYON FROM NEWPORT BOULEVARD TO COUNTRY HAVEN LANE		COUNTY OF ORANGE OC PUBLIC WORKS OC SURVEY/FIELD SERVICES/BOUNDARY ANALYSIS & MAPPING	
7/18/22		TOPOGRAPHIC MAP UPDATED AT 10711 CRAWFORD CANYON ROAD DUE TO NEW HOME RENOVATION (SHEET #13)		CRAWFORD CANYON ROAD SIDEWALK EXTENSION PHASE II	
9/01/21		ADDITIONAL RIGHT OF WAY AND EASEMENT ESTABLISHMENT S'LY OF THE CENTERLINE OF NEWPORT BOULEVARD		TOPOGRAPHIC MAP	
				PROJECT LIMITS: FROM NEWPORT BLVD. TO EL ROY DR. ALONG CRAWFORD CANYON RD. AND FROM 240' NELY OF HYDE DR. TO CRAWFORD CANYON RD. ALONG NEWPORT BLVD.	
				DATE OF SURVEY: 01/19/2023	
				BY: J. RUSSO & PARTY	
				OFFICE CHECK	
				BY: M. KUBISTY, PLS	
				FIELD CHECK	
				BY: J. RUSSO & PARTY	
				SCALE: 1"=20'	
				W.O. #E019817D	
				FILE #1920PW-IN0029	
				FILE: CRAWFORD CANYON ROAD_SIDEWALK EXTENSION_TOPO_2023.DWG	
				SHEET NO.	
				11	
				of	
				13	



<div>3</div>	2/28/23	ADDITIONAL TOPOGRAPHY AND RIGHT OF WAY ESTABLISHMENT ON EASTSIDE OF CRAWFORD CANYON FROM NEWPORT BOULEVARD TO COUNTRY HAVEN LANE	COUNTY OF ORANGE OC PUBLIC WORKS OC SURVEY/FIELD SERVICES/BOUNDARY ANALYSIS & MAPPING		SHEET NO. 12 of 1
<div>2</div>	7/18/22	TOPOGRAPHIC MAP UPDATED AT 10711 CRAWFORD CANYON ROAD DUE TO NEW HOME RENOVATION (sheet #13)	CRAWFORD CANYON ROAD SIDEWALK EXTENSION PHASE II		
<div>1</div>	9/01/21	ADDITIONAL RIGHT OF WAY AND EASEMENT ESTABLISHMENT S'LY OF THE CENTERLINE OF NEWPORT BOULEVARD	TOPOGRAPHIC MAP PROJECT LIMITS: FROM NEWPORT BLVD. TO EL ROY DR. ALONG CRAWFORD CANYON RD. AND FROM 240' N'ELY OF HYDE DR. TO CRAWFORD CANYON RD. ALONG NEWPORT BLVD.		
MARK	DATE	ITEM	DATE OF SURVEY: 01/19/2023 MAPPING OFFICE CHECK FIELD CHECK SCALE: 1" = 20' FILE: CRAWFORD CANYON RD. SIDEWALK EXTENSION. TOPO. 2023.DWG	BY: J. RUSSO & PARTY BY: R. CASANAVE BY: M. KUBISTY, PLS BY: J. RUSSO & PARTY W.O. #E019817D FILE #1920PW-IN0029	
REVISIONS					



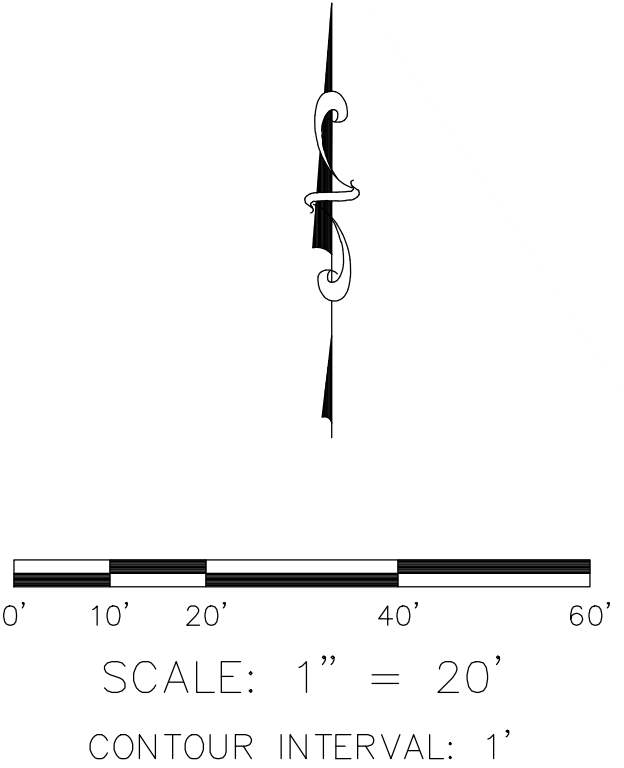
LEGEND

SYMBOL		SYMBOL		LINE PATTERN KEY	
	Control Point		Tree, Palm		Block Wall
	Drop Inlet		Utility Pole w/ 1 Light		Planter Brick
	Fire Hydrant		Utility Pole w/ 2 Lights		Centerline
	Gate, Double		Utility Pole, Underground		Concrete Wall
	Gate, Single		Utility Pole w/ 1 Light, Underground		Edge of Concrete
	Grate Inlet		Utility Pole w/ 2 Lights, Underground		Edge of Asphalt Pavement
	Guy Wire Anchor		Valve Gas		Fence Chainlink
	Light Pole, Double		Valve Water		Fence Plastic
	Light Pole, Single		Vent Pipe		Fence Wrought Iron
	Mailbox		Sprinkler		Flowline
	Manhole Electrical				Grade Line
	Manhole Sewer				Guard Rail
	Manhole Storm Drain				Hinge Point
	Manhole Telephone				Property Line
	Meter Undefined				Planter Stone
	Meter Water				Right of Way
	Pedestrian Activator				Stone Wall
	Pipe Inlet/Outlet				Striping
	Post				
	Pull Box Cable TV				
	Pull Box Electrical				
	Pull Box Irrigation				
	Pull Box Traffic				
	Pull Box Undefined				
	Sign Post				
	Tree				

ABBREVIATION	
AC	Asphalt
CL	Centerline
CONC	Concrete
CP	Control Point
EL	Elevation
FL	Flowline
FD	Found
FS	Finished Surface
INV	Invert
PP	Power Pole
SS	Sewer
SD	Storm Drain
MH	Manhole

AREA PATTERN KEY	
	Concrete
	Brick
	Dirt
	Grass
	Gravel/Rip Rap
	Detectable Warning Surface

U.S. Survey
Foot
OC Public Works
OC Survey/Field Services
Boundary Analysis & Mapping



3		2/28/23	ADDITIONAL TOPOGRAPHY AND RIGHT OF WAY ESTABLISHMENT ON EASTSIDE OF CRAWFORD CANYON FROM NEWPORT BOULEVARD TO COUNTRY HAVEN LANE.	COUNTY OF ORANGE OC PUBLIC WORKS OC SURVEY/FIELD SERVICES/BOUNDARY ANALYSIS & MAPPING	
2		7/18/22	TOPOGRAPHIC MAP UPDATED AT 10711 CRAWFORD CANYON ROAD DUE TO NEW HOME RENOVATION (SHEET #13)	CRAWFORD CANYON ROAD SIDEWALK EXTENSION PHASE II	
1		9/01/21	ADDITIONAL RIGHT OF WAY AND EASEMENT ESTABLISHMENT S'LY OF THE CENTERLINE OF NEWPORT BOULEVARD	TOPOGRAPHIC MAP PROJECT LIMITS: FROM NEWPORT BLVD. TO EL ROY DR. ALONG CRAWFORD CANYON RD. AND FROM 240' N'LY OF HYDE DR. TO CRAWFORD CANYON RD. ALONG NEWPORT BLVD.	
MARK		DATE	ITEM	DATE OF SURVEY: 01/19/2023	BY: J. RUSSO & PARTY
				OFFICE CHECK	BY: R. CASANAVE
				FIELD CHECK	BY: M. KUBISTY, PLS
				SCALE: 1" = 20'	BY: J. RUSSO & PARTY
				W.O. #E019817D	FILE #1920PW-IND029
				FILE: CRAWFORD_CANYON_ROAD_SIDEWALK_EXTENSION_TOPO_2023.DWG	
REVISIONS					SHEET NO. 13 of 13