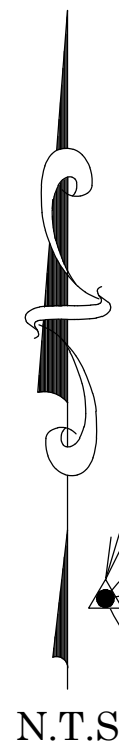
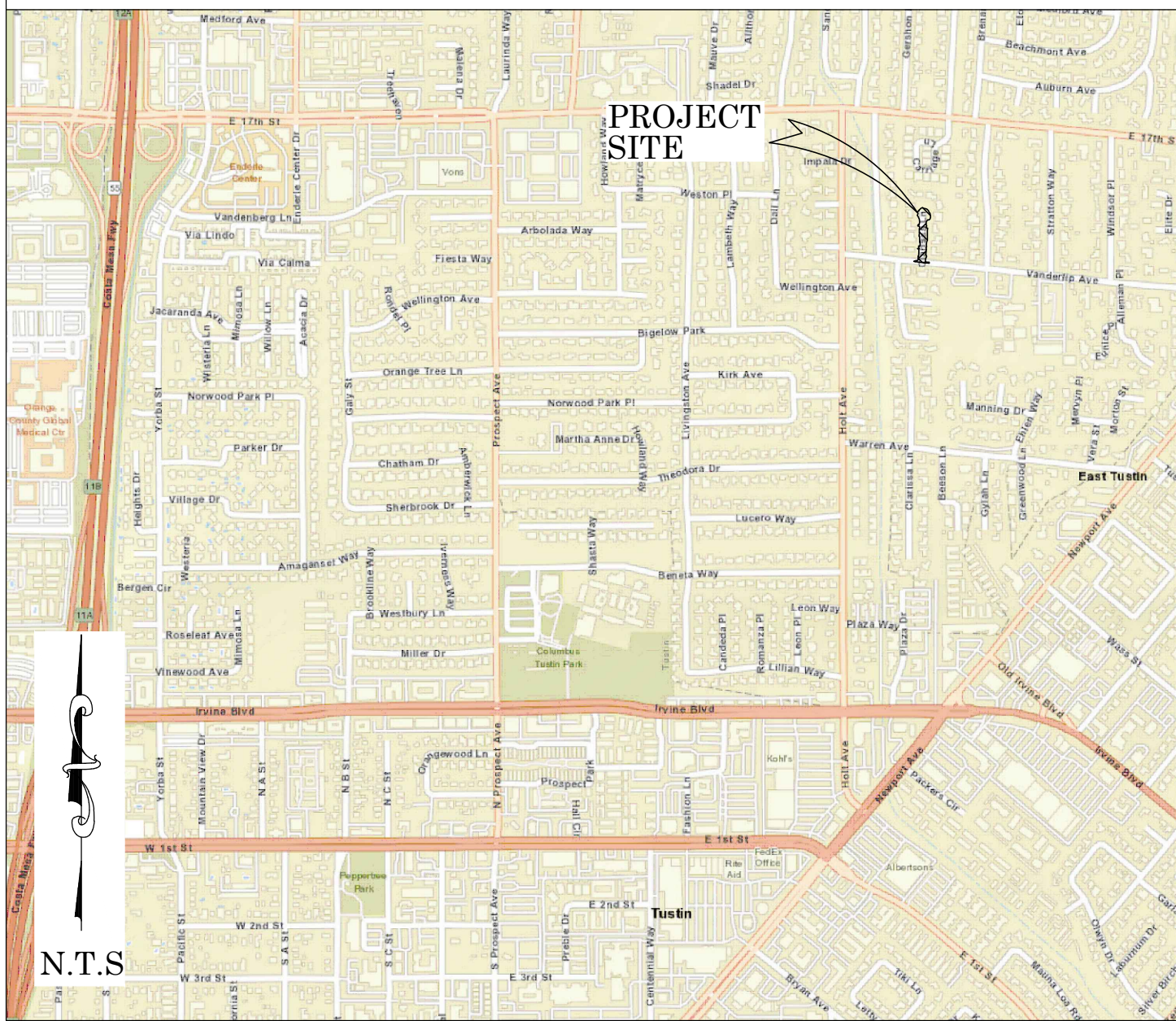




OC PUBLIC WORKS DEPARTMENT
JAMES TREADAWAY, DIRECTOR OF PUBLIC WORKS
KEVIN HILLS, COUNTY SURVEYOR
CLARISSA LANE
STREET IMPROVEMENTS



LOCATION MAP



FOUND CGPS "SACY"
N: 2218016.19
E: 6061432.26
THIS IS A CONTINUOUS GPS STATION
(CGPS) AND IS PART OF THE CALIFORNIA
SPATIAL REFERENCE NETWORK (CSRN),
FROM WHICH DATA CAN BE DOWNLOADED
HERE: [HTTP://SOPACCSRC.UCSD.EDU/](http://SOPACCSRC.UCSD.EDU/).

CP# 2011
FD 3/4" IP W/
CONC PLUG DN 0.6
N: 2223010.54'
E: 6086733.30'

CP# 2005
FD 2" IP & NAIL
NO TAG DN 0.3
N: 2222689.27'
E: 6086789.90'

FOUND CGPS "TRAK"
N: 2171992.61
E: 6088761.20
THIS IS A CONTINUOUS GPS STATION
(CGPS) AND IS PART OF THE CALIFORNIA
SPATIAL REFERENCE NETWORK (CSRN),
FROM WHICH DATA CAN BE DOWNLOADED
HERE: [HTTP://SOPACCSRC.UCSD.EDU/](http://SOPACCSRC.UCSD.EDU/).

TOPOGRAPHIC MAPPING PROJECT

BASIS OF BEARINGS

THE BASIS OF BEARINGS FOR THIS SURVEY IS BASED ON THE CALIFORNIA COORDINATE SYSTEM (CCS83), ZONE VI, NAD 83, OCS (2017.50) EPOCH ADJUSTMENT, AS DETERMINED LOCALLY BY A LINE BETWEEN CONTINUOUS GLOBAL POSITIONING STATIONS CGPS STATIONS (TRAK) AND (SACY) BEING NORTH 30°42'07" WEST AS DERIVED FROM THE COORDINATES PUBLISHED BY THE CALIFORNIA SPATIAL REFERENCE CENTER (CSRC) ALONG WITH DATA SHEETS ON FILE IN THE OFFICE OF THE ORANGE COUNTY SURVEYOR.

HORIZONTAL DATUM

COORDINATES SHOWN ARE BASED ON THE CALIFORNIA COORDINATE SYSTEM (CCS83), ZONE VI, NAD 83, OCS (2017.50) EPOCH ADJUSTMENT.
ALL DISTANCES SHOWN ARE GRID, UNLESS OTHERWISE NOTED. TO OBTAIN GROUND DISTANCES MULTIPLY GRID BY A COMBINED FACTOR OF 1.00002120.
THIS COMBINATION FACTOR WAS HELD AT: CP# 2005
N: 2222689.27 E: 6086789.90 EL: 167.82'
ALL DISTANCES ARE BASED ON THE U.S. SURVEY FOOT.

VERTICAL DATUM

O.C.S. BM. 3C-22-71 ELEV. = 174.752' YEAR LEVELED: 2015
NAVD 1988 (O.C.S. 1995 ADJUSTMENT)
DESCRIPTION: MONUMENT IS SET IN KNOWN SUBSIDENCE ZONE AND MAY NOT FIT ADJACENT BENCHMARKS. DESCRIBED BY OCS 2001 - FOUND 3 3/4" OCS ALUMINUM BENCHMARK DISK STAMPED "3C-22-71", SET IN THE TOP OF A 4 IN. BY 4 IN. CONCRETE POST. MONUMENT IS LOCATED IN THE SOUTHEAST CORNER OF THE INTERSECTION OF LAMBETH WAY AND 17TH STREET, 43 FT. SOUTHERLY OF THE CENTERLINE OF 17TH STREET AND 42.6 FT. EASTERLY OF THE CENTERLINE OF LAMBETH WAY. MONUMENT IS SET UP 0.1 FT. FROM THE TOP OF CURB.

NOTES

THE SURVEY INFORMATION SHOWN HEREON IS TO BE USED FOR TOPOGRAPHIC RELATIONSHIPS ONLY AND IS NOT INTENDED FOR LAND ACQUISITION OR BOUNDARY PURPOSES.

SHEET INDEX

SHEET	NO.	DESCRIPTION
1	1	TITLE SHEET
2	2	BOUNDARY MAP
3	3	TOPOGRAPHIC MAP
4-5	4-5	PROFILES

BASIS OF STATIONING

THE BASIS OF STATIONING FOR THE ALIGNMENTS SHOWN HEREIN IS STA 0+00 HELD AT THE EXISTING CONCRETE FLOW LINES SHOWN ON SHEET 3.

PURPOSE OF SURVEY

THE PURPOSE OF THE SURVEY IS TO PROVIDE A TOPOGRAPHIC MAP AND RIGHT OF WAY ESTABLISHMENT FOR THIS PORTION OF CLARISSA LANE.

SENIOR LAND SURVEYOR'S CERTIFICATE:

THIS MAP CORRECTLY REPRESENTS A SURVEY MADE BY ME OR UNDER MY DIRECTION IN CONFORMANCE WITH REQUIREMENTS OF THE PROFESSIONAL LAND SURVEYOR'S ACT; THIS 20 DAY OF JULY, 2022.

MICHAEL KUBISTY, PLS. SENIOR LAND SURVEYOR



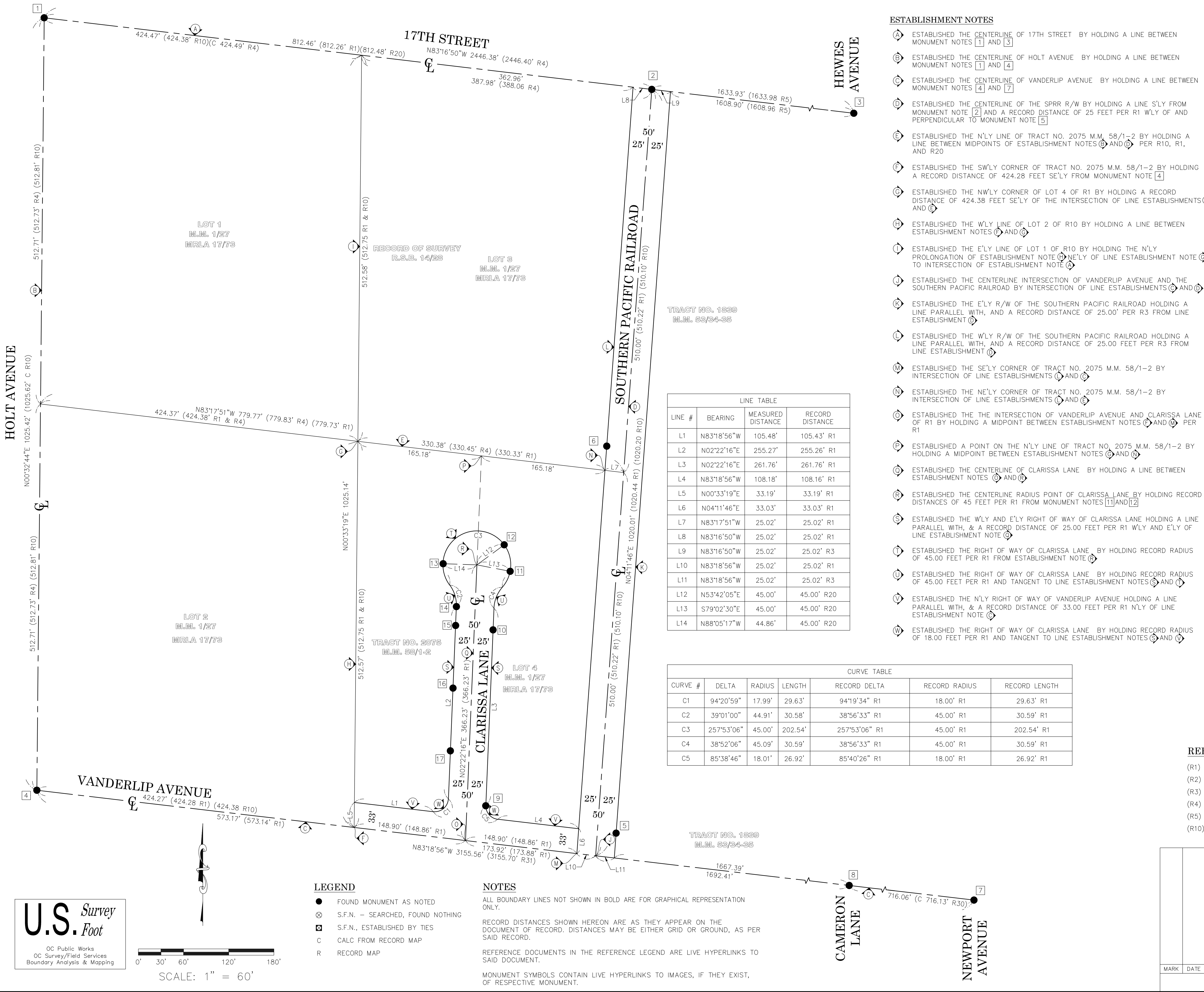
SENIOR LAND SURVEYOR'S STATEMENT:

THIS MAP HAS BEEN EXAMINED IN ACCORDANCE WITH THE PROFESSIONAL LAND SURVEYOR'S ACT; THIS 20 DAY OF JULY, 2022.

ELLIOTT MEDINA, PLS. SENIOR LAND SURVEYOR



		COUNTY OF ORANGE OC PUBLIC WORKS OC SURVEY/FIELD SERVICES/BOUNDARY ANALYSIS & MAPPING	
		CLARISSA LANE STREET IMPROVEMENTS	
		TITLE SHEET	
		PROJECT LIMITS: CLARISSA LANE NORTH OF VANDERLIP AVENUE	
		DATE OF SURVEY: 06/29/2022	BY: J. RUSSO & CREW
		MAPPING	BY: I. ISLAS
		OFFICE CHECK	BY: E. MEDINA, PLS
		FIELD CHECK	BY: J. RUSSO
		SCALE: N.T.S.	W.O. #EQ20574
		FILE: CLARISSA_TOPO_2022.DWG	FILE: #2122PW-CM0011
MARK	DATE	ITEM	SHEET NO.
REVISIONS			1 of 5



ESTABLISHMENT NOTES

- Ⓐ ESTABLISHED THE CENTERLINE OF 17TH STREET BY HOLDING A LINE BETWEEN MONUMENT NOTES [1](#) AND [3](#)
- Ⓑ ESTABLISHED THE CENTERLINE OF HOLT AVENUE BY HOLDING A LINE BETWEEN MONUMENT NOTES [1](#) AND [4](#)
- Ⓒ ESTABLISHED THE CENTERLINE OF VANDERLIP AVENUE BY HOLDING A LINE BETWEEN MONUMENT NOTES [4](#) AND [7](#)
- Ⓓ ESTABLISHED THE CENTERLINE OF THE SPRR R/W BY HOLDING A LINE S'LY FROM MONUMENT NOTE [2](#) AND A RECORD DISTANCE OF 25 FEET PER R1 W'LY OF AND PERPENDICULAR TO MONUMENT NOTE [5](#)
- Ⓔ ESTABLISHED THE N'LY LINE OF TRACT NO. 2075 M.M. 58/1-2 BY HOLDING A LINE BETWEEN MIDPOINTS OF ESTABLISHMENT NOTES [6](#) AND [7](#) PER R10, R1, AND R20
- Ⓕ ESTABLISHED THE SW'LY CORNER OF TRACT NO. 2075 M.M. 58/1-2 BY HOLDING A RECORD DISTANCE OF 424.28 FEET SE'LY FROM MONUMENT NOTE [4](#)
- Ⓖ ESTABLISHED THE NW'LY CORNER OF LOT 4 OF R1 BY HOLDING A RECORD DISTANCE OF 424.38 FEET SE'LY OF THE INTERSECTION OF LINE ESTABLISHMENTS [6](#) AND [7](#)
- Ⓗ ESTABLISHED THE W'LY LINE OF LOT 2 OF R10 BY HOLDING A LINE BETWEEN ESTABLISHMENT NOTES [6](#) AND [7](#)
- Ⓘ ESTABLISHED THE E'LY LINE OF LOT 1 OF R10 BY HOLDING THE N'LY PROLONGATION OF ESTABLISHMENT NOTE [6](#) NE'LY OF LINE ESTABLISHMENT NOTE [7](#) TO INTERSECTION OF ESTABLISHMENT NOTE [4](#)
- Ⓛ ESTABLISHED THE CENTERLINE INTERSECTION OF VANDERLIP AVENUE AND THE SOUTHERN PACIFIC RAILROAD BY INTERSECTION OF LINE ESTABLISHMENTS [6](#) AND [7](#)
- Ⓚ ESTABLISHED THE E'LY R/W OF THE SOUTHERN PACIFIC RAILROAD HOLDING A LINE PARALLEL WITH, AND A RECORD DISTANCE OF 25.00' PER R3 FROM LINE ESTABLISHMENT [6](#)
- Ⓛ ESTABLISHED THE W'LY R/W OF THE SOUTHERN PACIFIC RAILROAD HOLDING A LINE PARALLEL WITH, AND A RECORD DISTANCE OF 25.00 FEET PER R3 FROM LINE ESTABLISHMENT [6](#)
- Ⓜ ESTABLISHED THE SE'LY CORNER OF TRACT NO. 2075 M.M. 58/1-2 BY INTERSECTION OF LINE ESTABLISHMENTS [7](#) AND [7](#)
- Ⓝ ESTABLISHED THE NE'LY CORNER OF TRACT NO. 2075 M.M. 58/1-2 BY INTERSECTION OF LINE ESTABLISHMENTS [7](#) AND [7](#)
- Ⓞ ESTABLISHED THE THE INTERSECTION OF VANDERLIP AVENUE AND CLARISSA LANE OF R1 BY HOLDING A MIDPOINT BETWEEN ESTABLISHMENT NOTES [6](#) AND [7](#) PER R1
- Ⓟ ESTABLISHED A POINT ON THE N'LY LINE OF TRACT NO. 2075 M.M. 58/1-2 BY HOLDING A MIDPOINT BETWEEN ESTABLISHMENT NOTES [6](#) AND [7](#)
- Ⓠ ESTABLISHED THE CENTERLINE OF CLARISSA LANE BY HOLDING A LINE BETWEEN ESTABLISHMENT NOTES [7](#) AND [7](#)
- Ⓡ ESTABLISHED THE CENTERLINE RADIUS POINT OF CLARISSA LANE BY HOLDING RECORD DISTANCES OF 45 FEET PER R1 FROM MONUMENT NOTES [11](#) AND [12](#)
- Ⓢ ESTABLISHED THE W'LY AND E'LY RIGHT OF WAY OF CLARISSA LANE HOLDING A LINE PARALLEL WITH, & A RECORD DISTANCE OF 25.00 FEET PER R1 W'LY AND E'LY OF LINE ESTABLISHMENT NOTE [7](#)
- Ⓣ ESTABLISHED THE RIGHT OF WAY OF CLARISSA LANE BY HOLDING RECORD RADIUS OF 45.00 FEET PER R1 FROM ESTABLISHMENT NOTE [6](#)
- Ⓤ ESTABLISHED THE RIGHT OF WAY OF CLARISSA LANE BY HOLDING RECORD RADIUS OF 45.00 FEET PER R1 AND TANGENT TO LINE ESTABLISHMENT NOTES [6](#) AND [7](#)
- Ⓡ ESTABLISHED THE N'LY RIGHT OF WAY OF VANDERLIP AVENUE HOLDING A LINE PARALLEL WITH, & A RECORD DISTANCE OF 33.00 FEET PER R1 N'LY OF LINE ESTABLISHMENT NOTE [7](#)
- Ⓡ ESTABLISHED THE RIGHT OF WAY OF CLARISSA LANE BY HOLDING RECORD RADIUS OF 18.00 FEET PER R1 AND TANGENT TO LINE ESTABLISHMENT NOTES [6](#) AND [7](#)

BASIS OF BEARINGS

THE BASIS OF BEARINGS FOR THIS SURVEY IS BASED ON THE CALIFORNIA COORDINATE SYSTEM (CCS83), ZONE VI, NAD 83, OCS (2017.50) EPOCH ADJUSTMENT, AS DETERMINED LOCALLY BY A LINE BETWEEN CONTINUOUS GLOBAL POSITIONING STATIONS CGPS STATIONS (TRAK) AND (SACY) BEING NORTH 30°42'07" WEST AS DERIVED FROM THE COORDINATES PUBLISHED BY THE CALIFORNIA SPATIAL REFERENCE CENTER (CSRC) ALONG WITH DATA SHEETS ON FILE IN THE OFFICE OF THE ORANGE COUNTY SURVEYOR.

HORIZONTAL DATUM

COORDINATES SHOWN ARE BASED ON THE CALIFORNIA COORDINATE SYSTEM (CCS83), ZONE VI, NAD 83, OCS (2017.50) EPOCH ADJUSTMENT.

ALL DISTANCES SHOWN ARE GRID, UNLESS OTHERWISE NOTED. TO OBTAIN GROUND DISTANCE MULTIPLY A GRID DISTANCE BY 1.00002120.

COMBINATION FACTOR WAS HELD AT POINT NUMBER 2005
N:2222689.27', E:6086789.90', ELEVATION= 167.82'

RECORD DISTANCES SHOWN HEREON ARE AS THEY APPEAR ON THE DOCUMENT OF RECORD. DISTANCES MAY BE EITHER GRID OR GROUND, AS PER SAID RECORD.

ALL DISTANCES ARE BASED ON THE U.S. SURVEY FOOT.

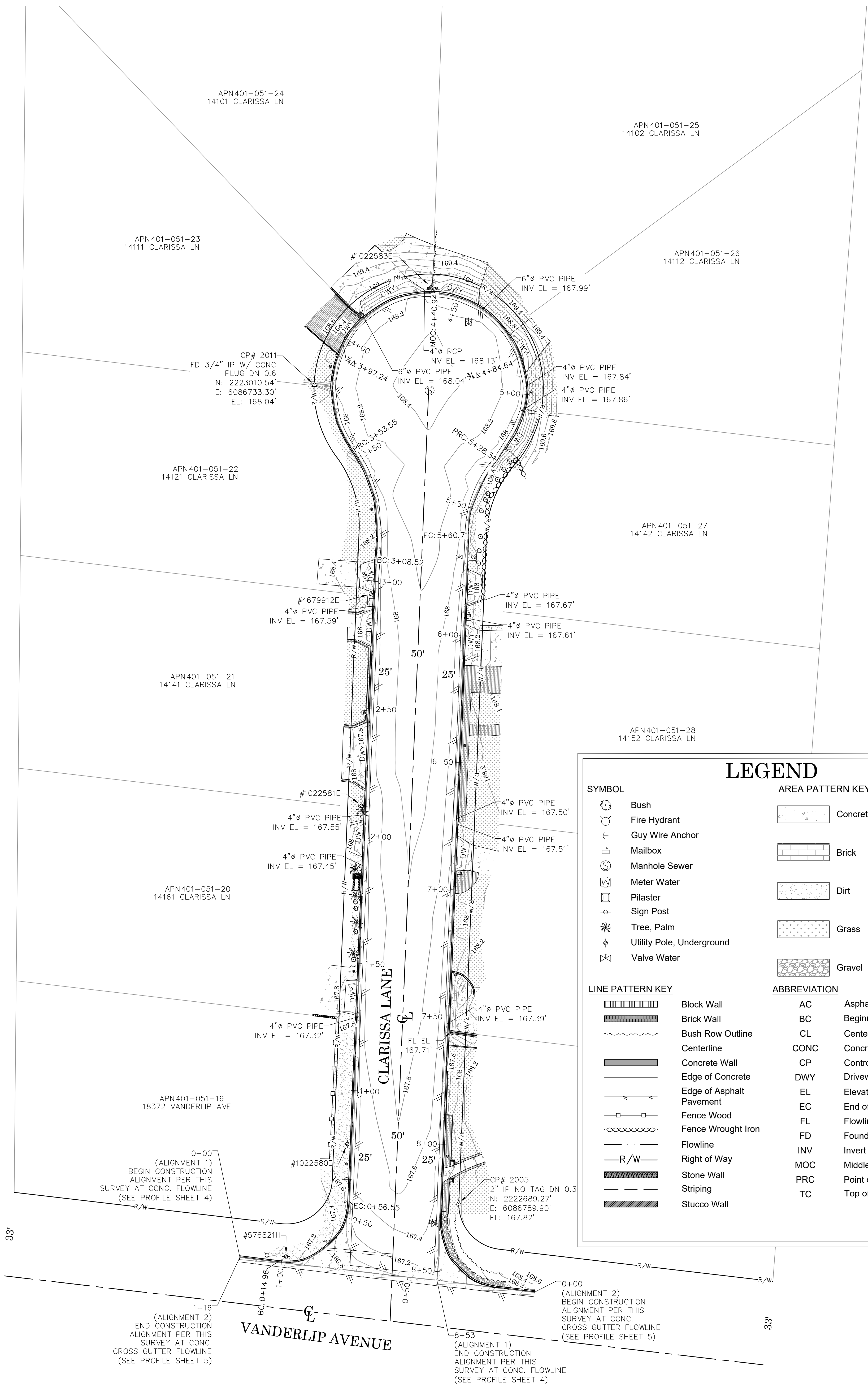
MONUMENT NOTES

- [1](#) FOUND NAIL IN CONC, PER COUNTY OF ORANGE ALIGNMENT NOTES A/5-9/109-120, DOWN 1.5 FEET IN WELL, ACCEPTED AS INTERSECTION OF HOLT AVENUE AND 17TH STREET.
- [2](#) FOUND SPIKE NO WASHER, DOWN .20 FEET, BENT, SHOT BASE, ACCEPTED AS SPIKE AND WASHER STAMPED "LS 5557" PER R4 AND THE CENTERLINE INTERSECTION OF SOUTHERN PACIFIC RAIL ROAD RIGHT OF WAY AND 17TH STREET
- [3](#) FOUND HEX BAR, PER COUNTY OF ORANGE ALIGNMENT NOTES A/5-9/109-120, DOWN 1.8 FEET IN WELL, ACCEPTED AS CENTERLINE INTERSECTION OF 17TH STREET AND HEWES AVENUE.
- [4](#) FOUND OCS ALUMINUM DISC ILLEGIBLE, PER A/5-9/755-757, DOWN. 1.5 FEET IN WELL, ACCEPTED AS CENTERLINE INTERSECTION OF HOLT AVENUE AND VANDERLIP AVENUE
- [5](#) FOUND 2 INCH IRON PIPE AND TAG STAMPED "LS 5557", PER R4, DOWN. 0.4 FEET IN DIRT, ACCEPTED AS SW'LY CORNER OF LOT 23 PER R3
- [6](#) FOUND 2 INCH IRON PIPE AND TAG STAMPED "LS 5557", PER R20, DOWN. 0.4 FEET IN DIRT, ACCEPTED AS POINT ON RIGHT OF WAY
- [7](#) FOUND SPIKE AND WASHER TAG STAMPED "LS 5411", PER R23, FLUSH IN A.C., ACCEPTED AS CENTERLINE INTERSECTION OF VANDERLIP AVENUE AND NEWPORT AVENUE
- [8](#) FOUND SPIKE AND WASHER TAG STAMPED "LS 7402", PER R30, FLUSH ON A.C., ACCEPTED AS POINT ON CENTERLINE OF VANDERLIP AVENUE
- [9](#) FOUND 2 INCH IRON PIPE & NAIL NO TAG, ACCEPTED AS 2 INCH IRON PIPE WITH COPPER TAG STAMPED "RE 4165" PER R1, DOWN. 0.3 FEET IN DIRT, ACCEPTED AS POINT ON CLARISSA LANE RIGHT OF WAY.
- [10](#) FOUND 3/4 INCH IRON PIPE-CONCRETE PLUG, ACCEPTED AS 3/4 INCH IRON PIPE WITH COPPER TAG STAMPED "RE 4165" PER R1, DOWN. 0.6 FEET IN DIRT, ACCEPTED AS POINT ON CLARISSA LANE RIGHT OF WAY.
- [11](#) FOUND 3/4 INCH IRON PIPE-CONCRETE PLUG, ACCEPTED AS 3/4 INCH IRON PIPE WITH COPPER TAG STAMPED "RE 4165" PER R1, DOWN. 0.3 FEET IN DIRT, ACCEPTED AS POINT ON CLARISSA LANE RIGHT OF WAY.
- [12](#) FOUND 3/4 INCH IRON PIPE-CONCRETE PLUG, ACCEPTED AS 3/4 INCH IRON PIPE WITH COPPER TAG STAMPED "RE 4165" PER R1, DOWN. 0.6 FEET IN DIRT, ACCEPTED AS POINT ON CLARISSA LANE RIGHT OF WAY.
- [13](#) FOUND 3/4 INCH IRON PIPE-CONCRETE PLUG, PER R1, DOWN. 0.6 FEET IN DIRT, S88°05'17"E 0.13 FEET FROM CLARISSA LANE RIGHT OF WAY.
- [14](#) FOUND 2 INCH IRON PIPE & NAIL NO TAG, ACCEPTED AS 3/4 INCH IRON PIPE WITH COPPER TAG STAMPED "RE 4165" PER R1, DOWN. 0.3 FEET IN DIRT, S87°37'44"E 0.11 FEET FROM CLARISSA LANE RIGHT OF WAY.
- [15](#) FOUND 3/4 INCH IRON PIPE-CONCRETE PLUG, PER R1, DOWN. 0.6 FEET IN DIRT, S87°37'44"E 0.08 FEET FROM CLARISSA LANE RIGHT OF WAY.
- [16](#) FOUND 3/4 INCH IRON PIPE-CONCRETE PLUG, PER R1, DOWN. 0.6 FEET IN DIRT, S87°37'44"E 0.08 FEET FROM CLARISSA LANE RIGHT OF WAY.
- [17](#) FOUND 3/4 INCH IRON PIPE-CONCRETE PLUG, PER R1, DOWN. 0.6 FEET IN DIRT, ACCEPTED AS POINT ON CLARISSA LANE RIGHT OF WAY.

REFERENCES

- (R1) = TRACT NO. 2075, MM 58/1-2 (R20) = CORNER RECORD, C.R. 2008-1058
(R2) = TRACT NO. 5391, MM 209/40-41 (R21) = CORNER RECORD, C.R. 2012-4406
(R3) = TRACT NO. 1839, MM 53/34-35 (R22) = CORNER RECORD, C.R. 2020-0334
(R4) = TRACT NO. 15168, MM 746/1-4 (R23) = CORNER RECORD, C.R. 2011-4046
(R5) = TRACT NO. 2580, MM 81/38-42 (R30) = PARCEL MAP NO. 2016-133, P.M.B. 395/6-7
(R10) = RECORD OF SURVEY 14-28 (R31) = PARCEL MAP NO. 98-237, P.M.B. 322/7-9

			COUNTY OF ORANGE OC PUBLIC WORKS OC SURVEY/FIELD SERVICES/BOUNDARY ANALYSIS & MAPPING		
			CLARISSA LANE STREET IMPROVEMENTS		
			BOUNDARY MAP		
			PROJECT LIMITS: CLARISSA LANE NORTH OF VANDERLIP AVENUE		
			TO		
			DATE OF SURVEY:06/29/2022	BY:J. RUSSO & CREW	SHEET NO. ---- of 5
			MAPPING	BY:A. VU	
			OFFICE CHECK	BY:E. MEDINA, PLS	
			FIELD CHECK	BY:J. RUSSO	
MARK	DATE	ITEM	SCALE:1" = 60'	W.O. #EQ20574	FILE #2122PW-CM0011
			REVISIONS		
			FILE:CLARISSA_BOUNDARY_2022.DWG		



SYMBOL

- Bush
- Fire Hydrant
- Guy Wire Anchor
- Mailbox
- Manhole Sewer
- Meter Water
- Pilaster
- Sign Post
- Tree, Palm
- Utility Pole, Underground
- Valve Water

AREA PATTERN KEY

- Concrete
- Brick
- Dirt
- Grass
- Gravel

LINE PATTERN KEY

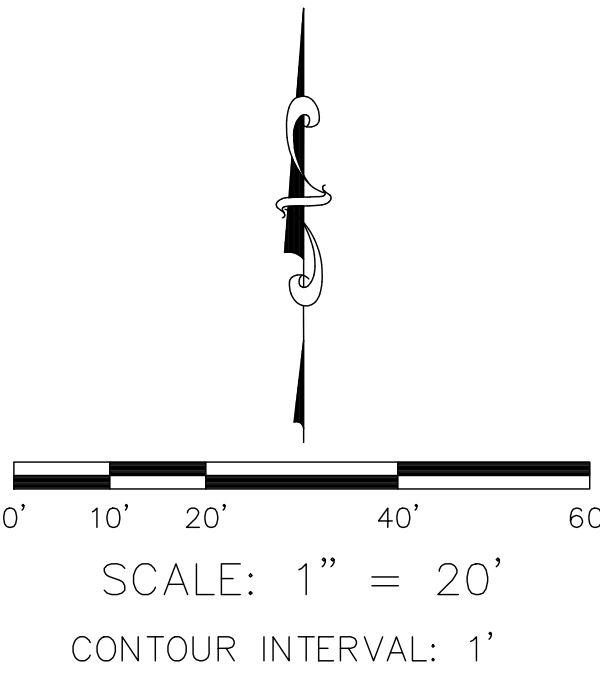
- Block Wall
- Brick Wall
- Bush Row Outline
- Centerline
- Concrete Wall
- Edge of Concrete
- Edge of Asphalt Pavement
- Fence Wood
- Fence Wrought Iron
- Flowline
- Right of Way
- Stone Wall
- Striping
- Stucco Wall

ABBREVIATION

AC	Asphalt Concrete
BC	Beginning of Curve
CL	Centerline
CONC	Concrete
CP	Control Point
DWY	Driveway
EL	Elevation
EC	End of Curve
FL	Flowline
FD	Found
INV	Invert
MOC	Middle of Curve
PRC	Point of Reverse Curve
TC	Top of Curb

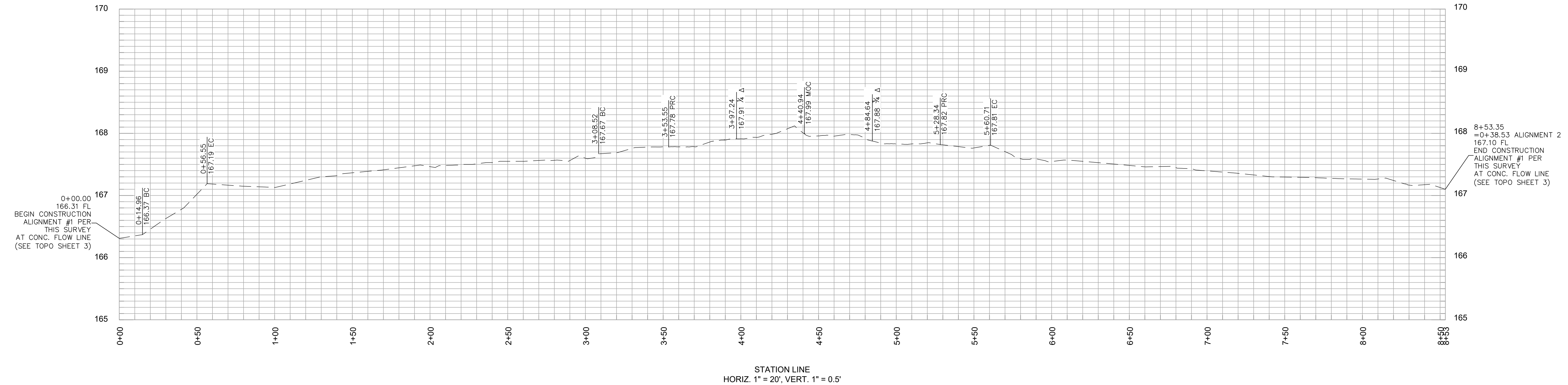
U.S. Survey Foot

OC Public Works
OC Survey/Field Services
Boundary Analysis & Mapping

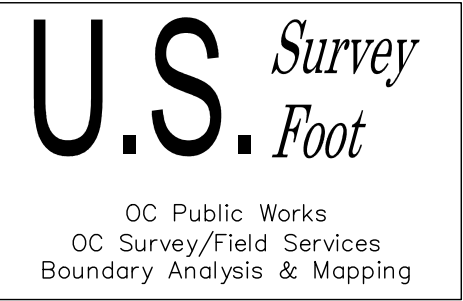


		COUNTY OF ORANGE OC PUBLIC WORKS OC SURVEY/FIELD SERVICES/BOUNDARY ANALYSIS & MAPPING	
		CLARISSA LANE STREET IMPROVEMENTS	
		TOPOGRAPHIC MAP	
		PROJECT LIMITS: CLARISSA LANE NORTH OF VANDERLIP AVENUE	
		DATE OF SURVEY: 06/29/2022	BY: J. RUSSO & CREW
		MAPPING	BY: I. ISLAS
		OFFICE CHECK	BY: E. MEDINA, PLS
		FIELD CHECK	BY: J. RUSSO
		SCALE: 1"=20'	W.O. #EQ20574
		FILE: CLARISSA_TOPO_2022.DWG	FILE #2122PW-CM0011
MARK	DATE	ITEM	
REVISIONS			

PROFILE OF THE EXISTING CONCRETE FLOWLINE OF CLARISSA LANE
 (ALIGNMENT 1)

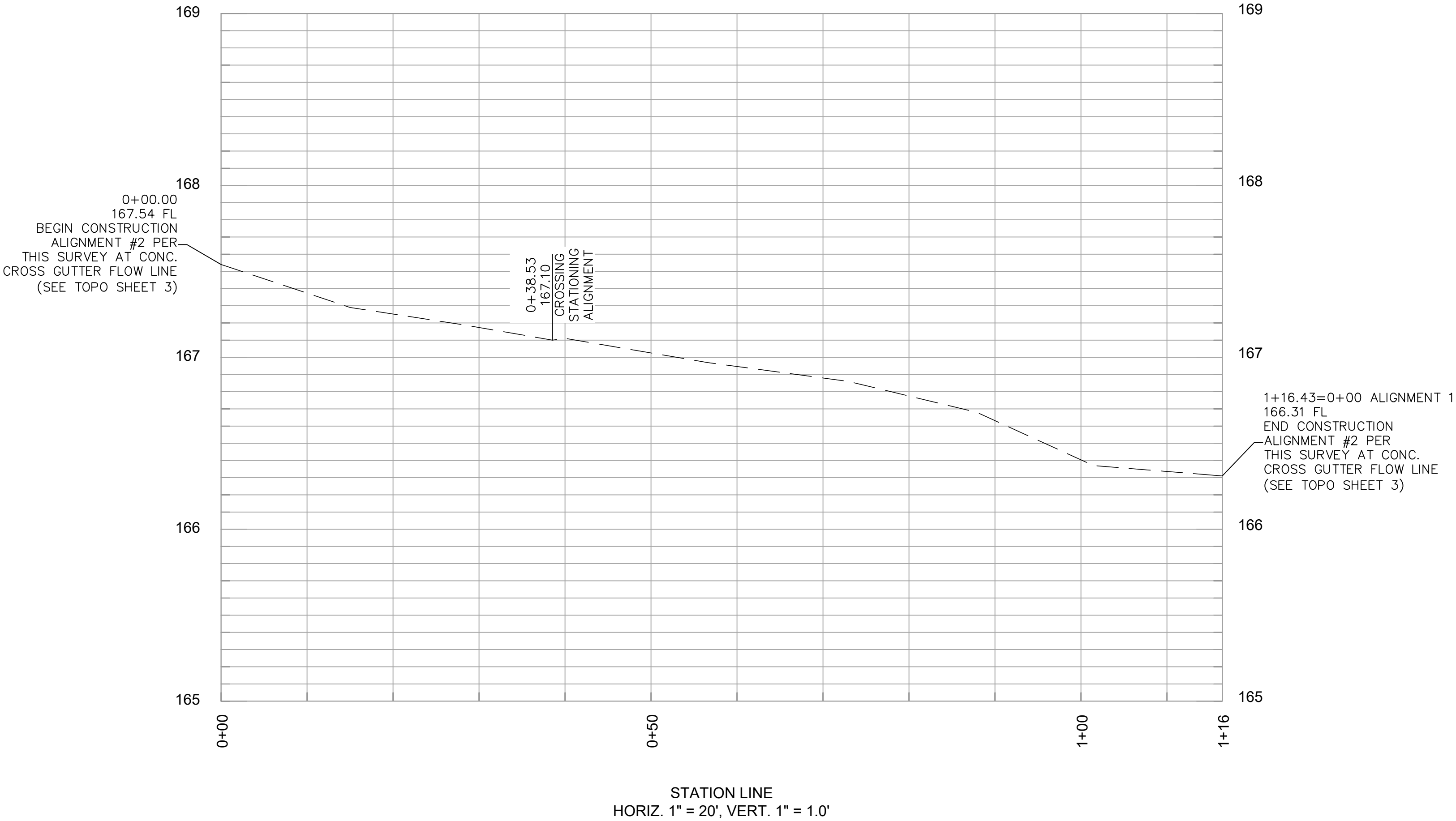


NOTE: THE ALIGNMENT FOR THIS PROFILE WAS DEVELOPED HOLDING A
 STATION OF 0+00 AT THE SW'LY END OF THE EXISTING CONCRETE
 FLOWLINE ON THE N'LY SIDE OF VANDERLIP AVE AND INCREASING
 NE'LY ALONG CLARISSA LN AS SHOWN ON SHEET 3

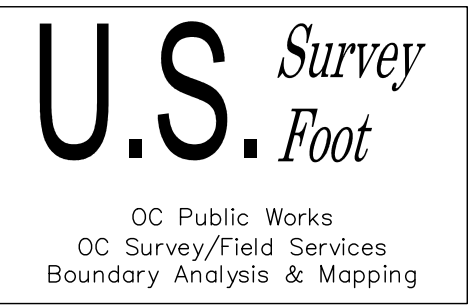


			COUNTY OF ORANGE OC PUBLIC WORKS OC SURVEY/FIELD SERVICES/BOUNDARY ANALYSIS & MAPPING				
			CLARISSA LANE STREET IMPROVEMENTS				
			PROFILE				
			PROJECT LIMITS: CLARISSA LANE NORTH OF VANDERLIP AVENUE				
MARK	DATE	ITEM	DATE OF SURVEY: 06/29/2022		BY: J. RUSSO & CREW		SHEET NO. 4 of 5
			MAPPING		BY: I. ISLAS		
			OFFICE CHECK		BY: E. MEDINA, PLS		
			FIELD CHECK		BY: J. RUSSO		
			SCALE: 1"=30'		W.O. #EQ20574		
		REVISIONS	FILE: CLARISSA_TOPO_2022.DWG		FILE # 2122PW-CM0011		

PROFILE OF THE EXISTING CONCRETE CROSS GUTTER FLOWLINE OF VANDERLIP AVENUE
(ALIGNMENT 2)



NOTE: THE ALIGNMENT FOR THIS PROFILE WAS DEVELOPED HOLDING A STATION OF 0+00 AT THE E'LY END OF THE EXISTING CONCRETE CROSS GUTTER FLOWLINE ON THE N'LY SIDE OF VANDERLIP AVE AND INCREASING NW'LY AS SHOWN ON SHEET 3



MARK	DATE	ITEM	COUNTY OF ORANGE OC PUBLIC WORKS OC SURVEY/FIELD SERVICES/BOUNDARY ANALYSIS & MAPPING			
			CLARISSA LANE STREET IMPROVEMENTS			
			PROFILE			
			PROJECT LIMITS: CLARISSA LANE NORTH OF VANDERLIP AVENUE			
			DATE OF SURVEY: 06/29/2022		BY: J. RUSSO & CREW	
			MAPPING		BY: I. ISLAS	
			OFFICE CHECK		BY: E. MEDINA, PLS	
			FIELD CHECK		BY: J. RUSSO	
			SCALE: 1"=10'		W.O. #EQ20574	
			FILE: CLARISSA_TOPO_2022.DWG		FILE # 2122PW-CM0011	
REVISIONS		SHEET NO. 5 of 5				