

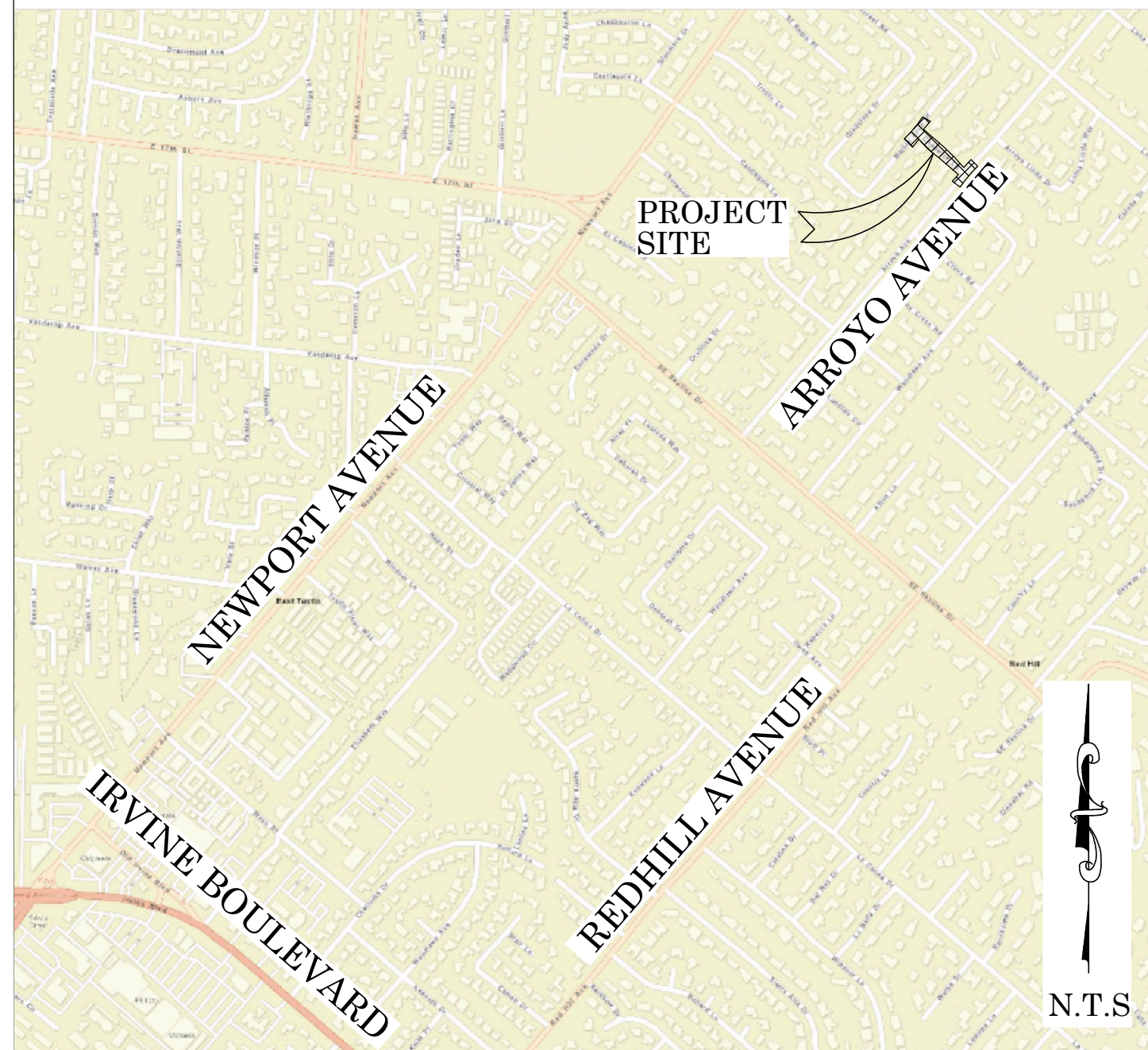


OC PUBLIC WORKS DEPARTMENT
JAMES TREADAWAY, DIRECTOR OF PUBLIC WORKS
KEVIN HILLS, COUNTY SURVEYOR
CHADWICK LANE
ENGINEERING EVALUATION



FOUND CGPS "CCCS"
N: 2261349.77'
E: 6071418.65'
THIS IS A CONTINUOUS GPS
STATION (CGPS) AND IS PART OF
THE CALIFORNIA SPATIAL
REFERENCE NETWORK (CSRN),
FROM WHICH DATA CAN BE
DOWNLOADED HERE:
HTTP://SOPACCSRC.UCSD.EDU/.

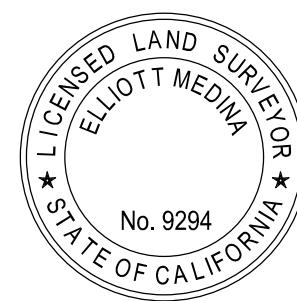
LOCATION MAP



SENIOR LAND SURVEYOR'S CERTIFICATE:

THIS MAP CORRECTLY REPRESENTS A SURVEY MADE BY ME
OR UNDER MY DIRECTION IN CONFORMANCE WITH
REQUIREMENTS OF THE PROFESSIONAL LAND SURVEYOR'S
ACT; THIS 27 DAY OF JULY, 2020.

ELLIOTT MEDINA, PLS. SENIOR LAND SURVEYOR



DEPUTY COUNTY SURVEYOR'S STATEMENT:

THIS MAP HAS BEEN EXAMINED IN ACCORDANCE WITH THE
PROFESSIONAL LAND SURVEYOR'S ACT; THIS 27 DAY OF
JULY, 2020.

WADE WEAVER, PLS. DEPUTY COUNTY SURVEYOR



N.T.S.



FOUND CGPS "SACY"
N: 2218015.22'
E: 6061433.13'
THIS IS A CONTINUOUS GPS
STATION (CGPS) AND IS PART OF
THE CALIFORNIA SPATIAL
REFERENCE NETWORK (CSRN),
FROM WHICH DATA CAN BE
DOWNLOADED HERE:
HTTP://SOPACCSRC.UCSD.EDU/.

BASIS OF BEARINGS

THE BASIS OF BEARINGS FOR THIS SURVEY IS BASED ON THE CALIFORNIA
COORDINATE SYSTEM (CCS83), ZONE VI, NAD 83, OCS (2017.50) EPOCH
ADJUSTMENT, AS DETERMINED LOCALLY BY A LINE BETWEEN CONTINUOUS
GLOBAL POSITIONING STATIONS CGPS STATIONS (SACY) AND (CCCS) BEING
NORTH 12°58'34" EAST AS DERIVED FROM THE COORDINATES PUBLISHED BY
THE CALIFORNIA SPATIAL REFERENCE CENTER (CSRC) ALONG WITH DATA
SHEETS ON FILE IN THE OFFICE OF THE ORANGE COUNTY SURVEYOR.

HORIZONTAL DATUM

COORDINATES SHOWN ARE BASED ON THE CALIFORNIA COORDINATE SYSTEM
(CCS83), ZONE VI, NAD 83, OCS (2017.50) EPOCH ADJUSTMENT.
ALL DISTANCES SHOWN ARE GRID, UNLESS OTHERWISE NOTED. TO OBTAIN
GROUND DISTANCES MULTIPLY GRID BY A COMBINED FACTOR OF 1.00002347.
COMBINATION FACTOR WAS HELD AT: #302
N: 2223490.98' E: 6092025.95' ELEVATION= 215.31'

VERTICAL DATUM

O.C.S. BM. 3A-109-79 ELEV. = 197.328' YEAR LEVELED: 2015
NAVD 1988 (O.C.S. 1995 ADJUSTMENT)
DESCRIPTION: MONUMENT IS SET IN KNOWN SUBSIDENCE ZONE AND MAY NOT
FIT ADJACENT BENCHMARKS. DESCRIBED BY OCS 2002 - FOUND 3 3/4" OCS
ALUMINUM BENCHMARK DISK STAMPED "3A-109-79", SET IN THE
SOUTHEASTERLY CORNER OF A 4 FT. BY 4.5 FT. CONCRETE CATCH BASIN.
MONUMENT IS LOCATED IN THE SOUTHEASTERLY CORNER OF THE INTERSECTION
OF 17TH STREET AND NEWPORT AVENUE, 48 FT. SOUTHEASTERLY OF THE
CENTERLINE OF NEWPORT AVENUE AND 60 FT. SOUTHWESTERLY OF THE
CENTERLINE OF EL CAMINO LANE. MONUMENT IS SET LEVEL WITH THE SIDEWALK.

NOTES

THE SURVEY INFORMATION SHOWN HEREON IS TO BE USED FOR TOPOGRAPHIC
RELATIONSHIPS ONLY AND IS NOT INTENDED FOR LAND ACQUISITION OR
BOUNDARY PURPOSES.

SHEET INDEX

SHEET NO.	DESCRIPTION
SHEET 1	TITLE SHEET
SHEET 2	BOUNDARY MAP
SHEETS 3-5	TOPOGRAPHIC MAP

PURPOSE OF SURVEY

THE PURPOSE OF THE SURVEY IS TO PROVIDE A TOPOGRAPHIC MAP FOR
ENGINEERING EVALUATION ON DRAINAGE ISSUE ON CHADWICK LANE.



TOPOGRAPHIC MAPPING PROJECT

			COUNTY OF ORANGE OC PUBLIC WORKS/ENGINEERING SERVICES OC SURVEY/FIELD SERVICES/BOUNDARY ANALYSIS & MAPPING				
			CHADWICK LANE ENGINEERING EVALUATION				
			TITLE SHEET				
			PROJECT LIMITS: CHADWICK LN. BETWEEN MARBLE ARCH DR. & ARROYO AVE.				
			DATE OF SURVEY: 05/28/2020		BY: R. MACIAS & CREW		SHEET NO. 1 of 5
			MAPPING		BY: I. ISLAS		
			OFFICE CHECK		BY: E. MEDINA, PLS		
			FIELD CHECK		BY: R. MACIAS, PLS		
			SCALE: N.T.S.		W.O. #ER38001		
			FILE: CHADWICK LN TOPO_2020.DWG		FILE # 1920PW-IN0026		
MARK	DATE	ITEM					
REVISIONS							

MONUMENT NOTES

- 1

FOUND O.C.S. WELL WITH 2" PUNCHED BRASS DISK, NO STAMP, PER (R1), DN. 1.6', ACCEPTED AS THE CENTERLINE INTERSECTION OF LA LOMA DRIVE AND ARROYO AVENUE.
- 2

FOUND GEAR SPIKE AND 1-1/2" WASHER STAMPED "LS 6970" IN LIEU OF PUNCHED SPIKE AND OCS WASHER STAMPED "10-84" PER R1 (PG.4), FLUSH IN AC, ACCEPTED AND CENTERLINE INTERSECTION OF SKYLINE DRIVE AND ARROYO AVENUE.
- 3

FOUND SPIKE & 1-1/4" STEEL WASHER, ILLEGIBLE, PER (R3), DN. 0.25' IN AC, ACCEPTED AS CENTERLINE INTERSECTION OF MARBLE ARCH DRIVE AND HUNTRIDGE ROAD.
- 4

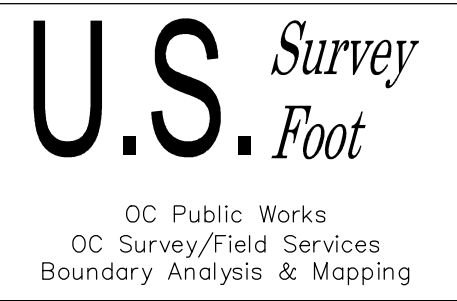
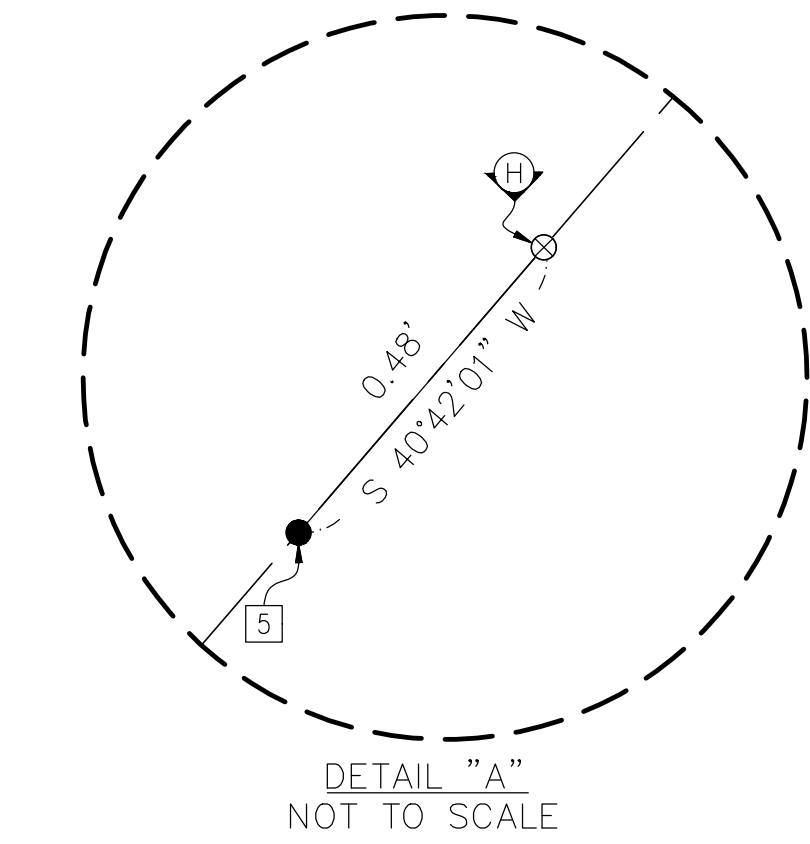
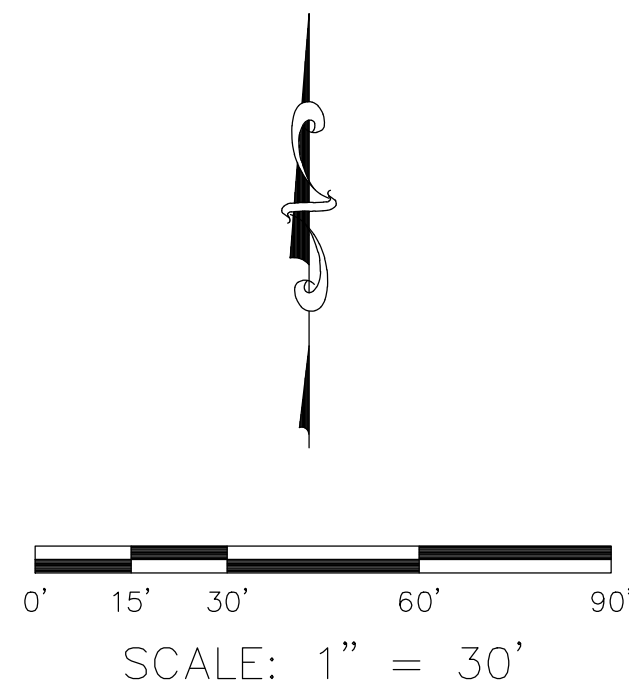
FOUND SPIKE & 1-1/4" STEEL WASHER, ILLEGIBLE, PER (R3), DN. 0.20' IN AC, ACCEPTED AS CENTERLINE B.C. OF MARBLE ARCH DRIVE.
- 5

FOUND SPIKE & 1-1/4" STEEL WASHER, ILLEGIBLE, PER (R3), DN. 0.25' IN AC. S40°42'01"W 0.48', AND APPEARS DISTURBED, ACCEPTED AS BEING ON THE CENTERLINE OF MARBLE ARCH DRIVE (SEE DETAIL "A").

LINE TABLE			
LINE #	BEARING	MEASURED DISTANCE	RECORD DISTANCE
L1	N49°14'16"W	37.25'	37.25' (M&R3)
L2	N49°14'16"W	23.40'	23.40' (M&R3)
L3	N49°14'16"W	294.86'	294.85' (R3)
L4	N40°41'07"E	25.00'	25.00' (R3)
L5	N40°50'12"E	25.00'	25.00' (R3)

REFERENCES

- (R1) = ALIGNMENT NOTE, A/NE-IRV, PGS 1671-1690
- (R2) = TRACT 3696, M.M. 134/44-47
- (R3) = TRACT 3527, M.M. 130/4-6



LEGEND

- FOUND MONUMENT AS NOTED
- ⊗ SFN, SEARCHED FOUND NOTHING

CURVE TABLE						
CURVE #	LENGTH	RADIUS	DELTA	RECORD LENGTH	RECORD RADIUS	RECORD DELTA
C1	141.60'	800.00'	10°08'29"	141.60' (R3)	800.00' (R3)	10°08'30" (R3)
C2	141.60'	800.00'	10°08'29"	141.60' (R2)	800.00' (R2)	10°08'30" (R2)
C3	41.81'	25.00'	95°48'55"	41.94' (R3)	25.00' (R3)	96°06'55" (R3)
C4	21.35'	15.00'	81°33'04"	21.56' (R2)	15.00' (R2)	82°20'33" (R2)

TR 3527
M.M. 130/4-6
LOT 24

TR 3527
M.M. 130/4-6
LOT 25

TR 3696
M.M. 134/43-47
LOT 31

LOT 347 BLOCK 14
IRVINE SUB'D
M.M. 1/88

TR 3696
M.M. 134/43-47
LOT 32

TR 3527
M.M. 130/4-6
LOT 1

ESTABLISHMENT NOTES

- A

ESTABLISHED A PORTION OF THE CENTERLINE OF ARROYO AVENUE BY HOLDING A LINE BETWEEN MONUMENT 1 AND 2 PER (R2).
- B

SFN, ESTABLISHED THE CENTERLINE INTERSECTION OF ARROYO AVENUE AND CHADWICK LANE BY PRORATION BETWEEN MONUMENT 1 & 2 PER (R2).
- C

ESTABLISHED A PORTION OF THE CENTERLINE OF MARBLE ARCH DRIVE BY HOLDING A LINE BETWEEN MONUMENTS 3 AND 4 PER (R2).
- D

ESTABLISHED A PORTION OF THE CENTERLINE OF MARBLE ARCH DRIVE BY HOLDING A TANGENT CURVE FROM THE SW'LY TERMINUS OF ESTABLISHMENT NOTE C AND RECORD CURVE DATA PER (R2&R3).
- E

ESTABLISHED THE CENTERLINE INTERSECTION OF MARBLE ARCH DRIVE AND CHADWICK LANE BY HOLDING THE SW'LY END OF ESTABLISHMENT NOTE D, ACCEPTED AS THE CL PRC PER (R2).
- F

ESTABLISHED THE CENTERLINE OF CHADWICK LANE BY HOLDING A LINE BETWEEN ESTABLISHMENT NOTES B AND E PER (R3).
- G

ESTABLISHED A PORTION OF THE CENTERLINE OF MARBLE ARCH DRIVE BY HOLDING A TANGENT CURVE FROM THE SW'LY TERMINUS OF ESTABLISHMENT NOTE D AND RECORD CURVE DATA PER (R2&R3).
- H

ESTABLISHED A POSITION ON THE CENTERLINE OF MARBLE ARCH DRIVE HOLDING THE SW'LY END OF ESTABLISHMENT NOTE G PER (R3).
- J

ESTABLISHED A PORTION OF THE SE'LY RIGHT OF WAY OF ARROYO AVENUE PARALLEL AND 30' FROM ESTABLISHMENT NOTE A PER (R3).
- K

ESTABLISHED A PORTION OF THE NW'LY RIGHT OF WAY OF ARROYO AVENUE PARALLEL AND 30' FROM ESTABLISHMENT NOTE A PER (R3).
- L

ESTABLISHED A PORTION OF THE SW'LY RIGHT OF WAY OF CHADWICK LANE PARALLEL AND 25' FROM ESTABLISHMENT NOTE F PER (R3).

- M

ESTABLISHED A PORTION OF THE NE'LY RIGHT OF WAY OF CHADWICK LANE PARALLEL AND 25' FROM ESTABLISHMENT NOTE F PER (R3).
- P

ESTABLISHED A PORTION OF THE NW'LY RIGHT OF WAY RADIAL TO AND 28' FROM ESTABLISHMENT NOTE D AND G PER (R2).
- Q

ESTABLISHED A PORTION OF THE SE'LY RIGHT OF WAY RADIAL TO AND 28' FROM ESTABLISHMENT NOTE D AND G PER (R2).
- T

ESTABLISHED A POSITION ON THE ESTABLISHED RIGHT OF WAY 25' PERPENDICULAR FROM ESTABLISHMENT NOTE F AT ESTABLISHMENT NOTE S PER (R3).
- U

ESTABLISHED A PORTION OF THE RIGHT OF WAY BY HOLDING A TANGENT CURVE FROM THE NW'LY TERMINUS OF ESTABLISHMENT NOTE L AND RECORD RADIUS 25.00' PER (R3).
- V

ESTABLISHED A POSITION ON THE ESTABLISHED RIGHT OF WAY 25' PERPENDICULAR FROM ESTABLISHMENT NOTE F AT ESTABLISHMENT NOTE R PER (R3).
- W

ESTABLISHED A PORTION OF THE RIGHT OF WAY BY HOLDING A TANGENT CURVE FROM THE NW'LY TERMINUS OF ESTABLISHMENT NOTE M AND RECORD RADIUS 25.00' PER (R3).

HORIZONTAL DATUM

COORDINATES SHOWN ARE BASED ON THE CALIFORNIA COORDINATE SYSTEM (CCS83), ZONE VI, NAD 83, OCS (2017.50) EPOCH ADJUSTMENT.

ALL DISTANCES SHOWN ARE GRID, UNLESS OTHERWISE NOTED. TO OBTAIN GROUND DISTANCE MULTIPLY A GRID DISTANCE BY 1.00002347'.

COMBINATION FACTOR WAS HELD AT POINT NUMBER 302, AS SHOWN ON SHEET 1, N:2223490.98', E:6092025.95', ELEVATION= 215.31'

RECORD DISTANCES SHOWN HEREON ARE AS THEY APPEAR ON THE DOCUMENT OF RECORD. DISTANCES MAY BE EITHER GRID OR GROUND, AS PER SAID RECORD.

ALL DISTANCES ARE BASED ON THE U.S. SURVEY FOOT.

NOTES

STREET R/W SHOWN IN BOLD ESTABLISHED BY SURVEY. LOT LINES ARE FOR GRAPHICAL PURPOSES ONLY.

BASIS OF BEARINGS

THE BASIS OF BEARINGS SHOWN HEREON ARE BASED ON THE CGPS STATIONS (SACY) AND (CCCS) HAVING A BEARING OF NORTH 12°58'34" EAST.

			COUNTY OF ORANGE OC PUBLIC WORKS		
			CHADWICK LANE CENTERLINE ESTABLISHMENT		
			PROJECT LIMITS: CHADWICK LN. BETWEEN MARBLE ARCH DR. & ARROYO AVE.		
			DATE OF SURVEY:05/28/2020	BY:R. MACIAS & CREW	SHEET NO. 2 of 5
			MAPPING	BY:S. STROM	
			OFFICE CHECK	BY:E. MEDINA, PLS	
			FIELD CHECK	BY:R. MACIAS, PLS	
MARK	DATE	ITEM	SCALE:1" = 30'	W.O. #ER38001	FILE #1920PW-IN0026
			REVISIONS		
			FILE:CHADWICK_BOUNDARY_2020.DWG		

LEGEND

SYMBOL

- Bush
- Control Point
- Fire Hydrant
- Gate, Double
- Gate, Roller
- Gate, Single
- Guy Wire Anchor
- Mailbox
- Manhole Sewer
- Meter Water
- Pilaster
- Sewer Cleanout
- Sign Post
- Tree
- Tree, Palm
- Utility Pole, Underground
- Utility Pole w/ 1 Light, Underground
- Valve Gas
- Valve Water

ABBREVIATION

- CLR Clearance
- CP Control Point
- EL Elevation
- ENC Encroachment
- UP Utility Pole

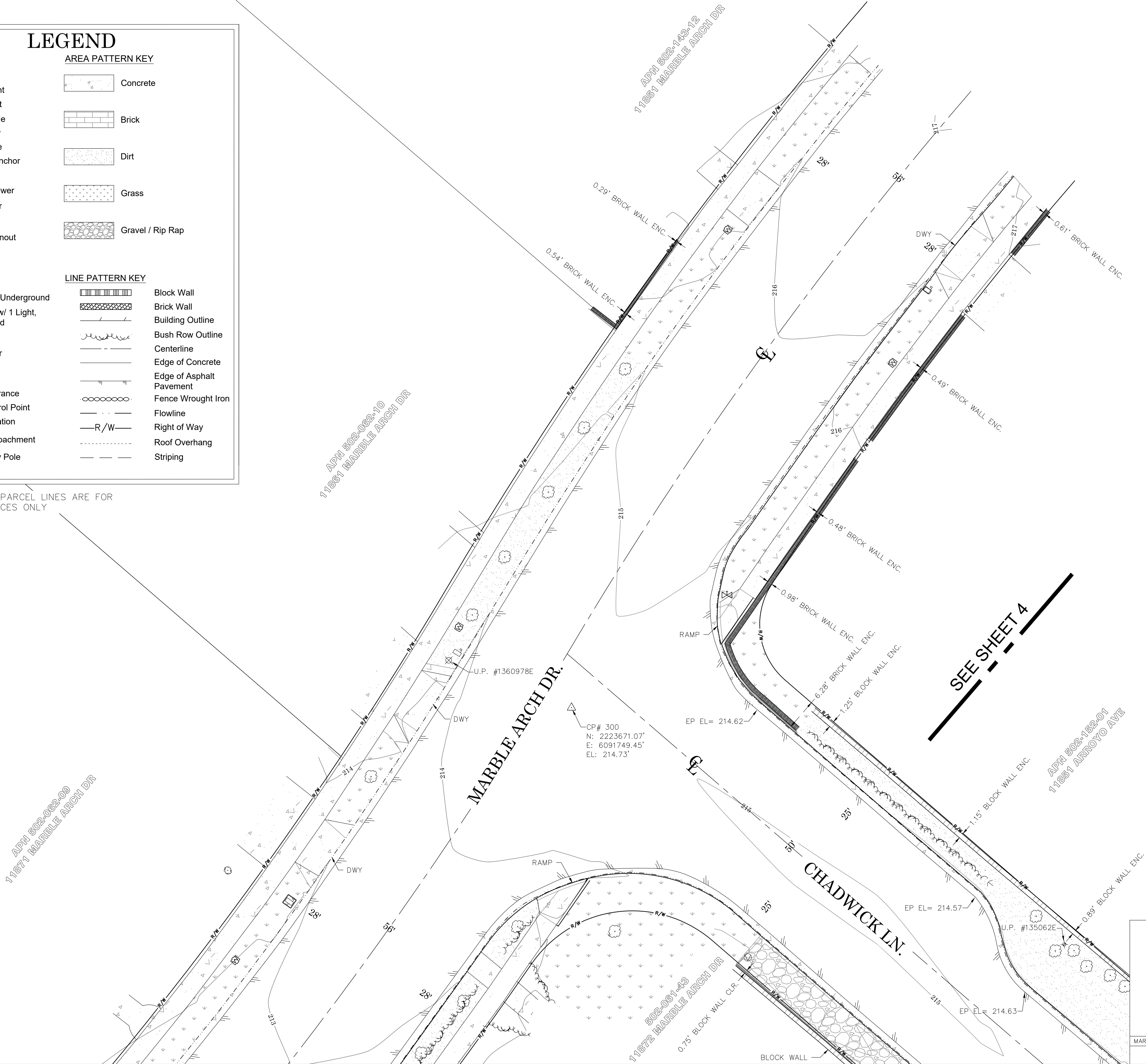
AREA PATTERN KEY

- Concrete
- Brick
- Dirt
- Grass
- Gravel / Rip Rap

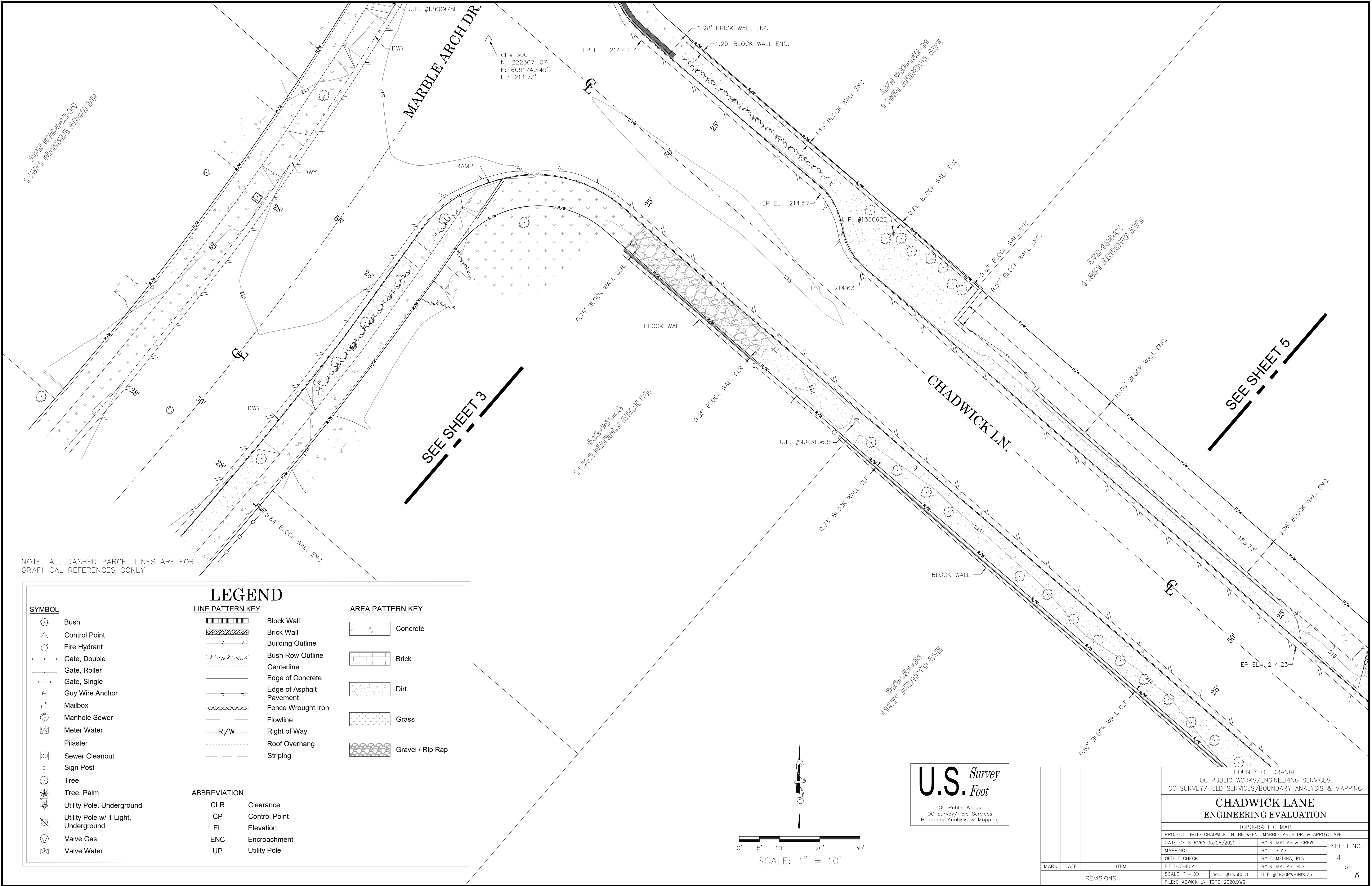
LINE PATTERN KEY

- Block Wall
- Brick Wall
- Building Outline
- Bush Row Outline
- Centerline
- Edge of Concrete
- Edge of Asphalt Pavement
- Fence Wrought Iron
- Flowline
- Right of Way
- Roof Overhang
- Striping

NOTE: ALL DASHED PARCEL LINES ARE FOR GRAPHICAL REFERENCES ONLY



COUNTY OF ORANGE OC PUBLIC WORKS/ENGINEERING SERVICES OC SURVEY/FIELD SERVICES/BOUNDARY ANALYSIS & MAPPING			
CHADWICK LANE ENGINEERING EVALUATION			
TOPOGRAPHIC MAP			
PROJECT LIMITS: CHADWICK LN. BETWEEN MARBLE ARCH DR. & ARROYO AVE.			
DATE OF SURVEY: 05/28/2020		BY: R. MACIAS & CREW	
MAPPING		BY: L. ISLAS	
OFFICE CHECK		BY: E. MEDINA, PLS	
FIELD CHECK		BY: R. MACIAS, PLS	
SCALE: 1" = XX'		W.O. #ER38001	FILE #1920PW-IN0026
FILE: CHADWICK_LN_TOPO_2020.DWG			
MARK	DATE	ITEM	SHEET NO.
REVISIONS			3 of 5



SEE SHEET 3

SEE SHEET 5

NOTE: ALL DASHED PARCEL LINES ARE FOR GRAPHICAL REFERENCES ONLY

SYMBOL

- Bush
- Control Point
- Fire Hydrant
- Gate, Double
- Gate, Roller
- Gate, Single
- Guy Wire Anchor
- Mailbox
- Manhole Sewer
- Meter Water
- Pilaster
- Sewer Cleanout
- Sign Post
- Tree
- Tree, Palm
- Utility Pole, Underground
- Utility Pole w/ 1 Light, Underground
- Valve Gas
- Valve Water

LEGEND

LINE PATTERN KEY

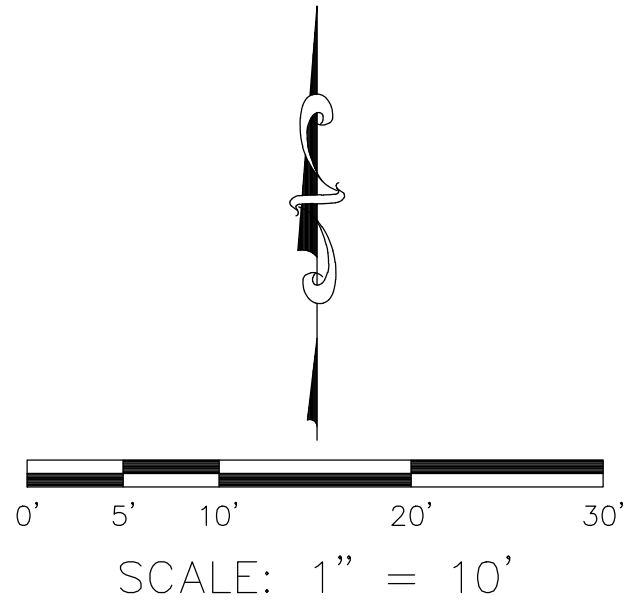
- Block Wall
- Brick Wall
- Building Outline
- Bush Row Outline
- Centerline
- Edge of Concrete
- Edge of Asphalt Pavement
- Fence Wrought Iron
- Flowline
- Right of Way
- Roof Overhang
- Striping

AREA PATTERN KEY

- Concrete
- Brick
- Dirt
- Grass
- Gravel / Rip Rap

ABBREVIATION

- CLR Clearance
- CP Control Point
- EL Elevation
- ENC Encroachment
- UP Utility Pole



U.S. Survey

OC Public Works
OC Survey/Field Services
Boundary Analysis & Mapping

			COUNTY OF ORANGE OC PUBLIC WORKS/ENGINEERING SERVICES OC SURVEY/FIELD SERVICES/BOUNDARY ANALYSIS & MAPPING			
			CHADWICK LANE ENGINEERING EVALUATION			
			TOPOGRAPHIC MAP			
			PROJECT LIMITS: CHADWICK LN. BETWEEN MARBLE ARCH DR. & ARROYO AVE.			
			DATE OF SURVEY: 05/28/2020		BY: R. MACIAS & CREW	SHEET NO. 4 of 5
			MAPPING		BY: I. ISLAS	
			OFFICE CHECK		BY: E. MEDINA, PLS	
			FIELD CHECK		BY: R. MACIAS, PLS	
			SCALE: 1" = XX'		W.O. #ER38001	
			FILE: CHADWICK LN. TOPO-2020.DWG		FILE # 1920PW-IN0026	
MARK	DATE	ITEM	REVISIONS			

NOTE: ALL DASHED PARCEL LINES ARE FOR GRAPHICAL REFERENCES ONLY

LEGEND

SYMBOL

- Bush
- Control Point
- Fire Hydrant
- Gate, Double
- Gate, Roller
- Gate, Single
- Guy Wire Anchor
- Mailbox
- Manhole Sewer
- Meter Water
- Pilaster
- Sewer Cleanout
- Sign Post
- Tree
- Tree, Palm
- Utility Pole, Underground
- Utility Pole w/ 1 Light, Underground
- Valve Gas
- Valve Water

ABBREVIATION

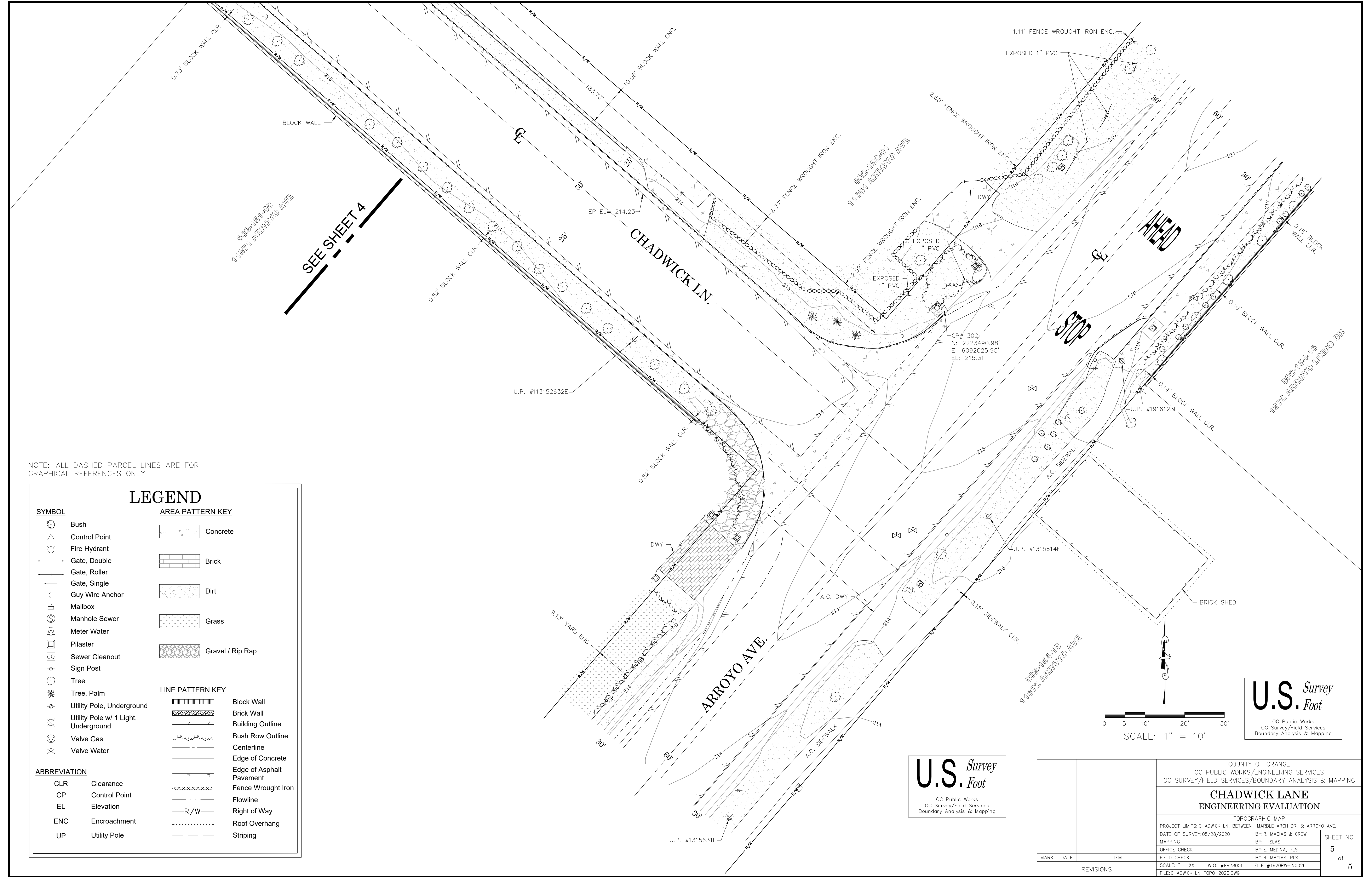
- CLR Clearance
- CP Control Point
- EL Elevation
- ENC Encroachment
- UP Utility Pole

AREA PATTERN KEY

- Concrete
- Brick
- Dirt
- Grass
- Gravel / Rip Rap

LINE PATTERN KEY

- Block Wall
- Brick Wall
- Building Outline
- Bush Row Outline
- Centerline
- Edge of Concrete
- Edge of Asphalt Pavement
- Fence Wrought Iron
- Flowline
- R/W Right of Way
- Roof Overhang
- Striping



SCALE: 1" = 10'

U.S. Survey
Foot
OC Public Works
OC Survey/Field Services
Boundary Analysis & Mapping

U.S. Survey
Foot
OC Public Works
OC Survey/Field Services
Boundary Analysis & Mapping

COUNTY OF ORANGE OC PUBLIC WORKS/ENGINEERING SERVICES OC SURVEY/FIELD SERVICES/BOUNDARY ANALYSIS & MAPPING			
CHADWICK LANE ENGINEERING EVALUATION			
TOPOGRAPHIC MAP			
PROJECT LIMITS: CHADWICK LN. BETWEEN MARBLE ARCH DR. & ARROYO AVE.		SHEET NO.	
DATE OF SURVEY: 05/28/2020		BY: R. MACIAS & CREW	
MAPPING		BY: L. ISLAS	
OFFICE CHECK		BY: E. MEDINA, PLS	
FIELD CHECK		BY: R. MACIAS, PLS	
SCALE: 1" = XX'		W.O. #ER38001	
FILE: CHADWICK LN_TOPO_2020.DWG		FILE #1920PW-IN0026	
MARK	DATE	ITEM	
REVISIONS			
5 of 5			