

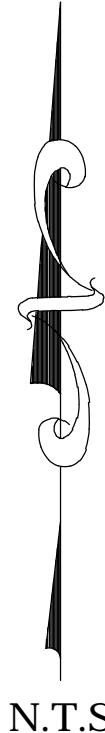
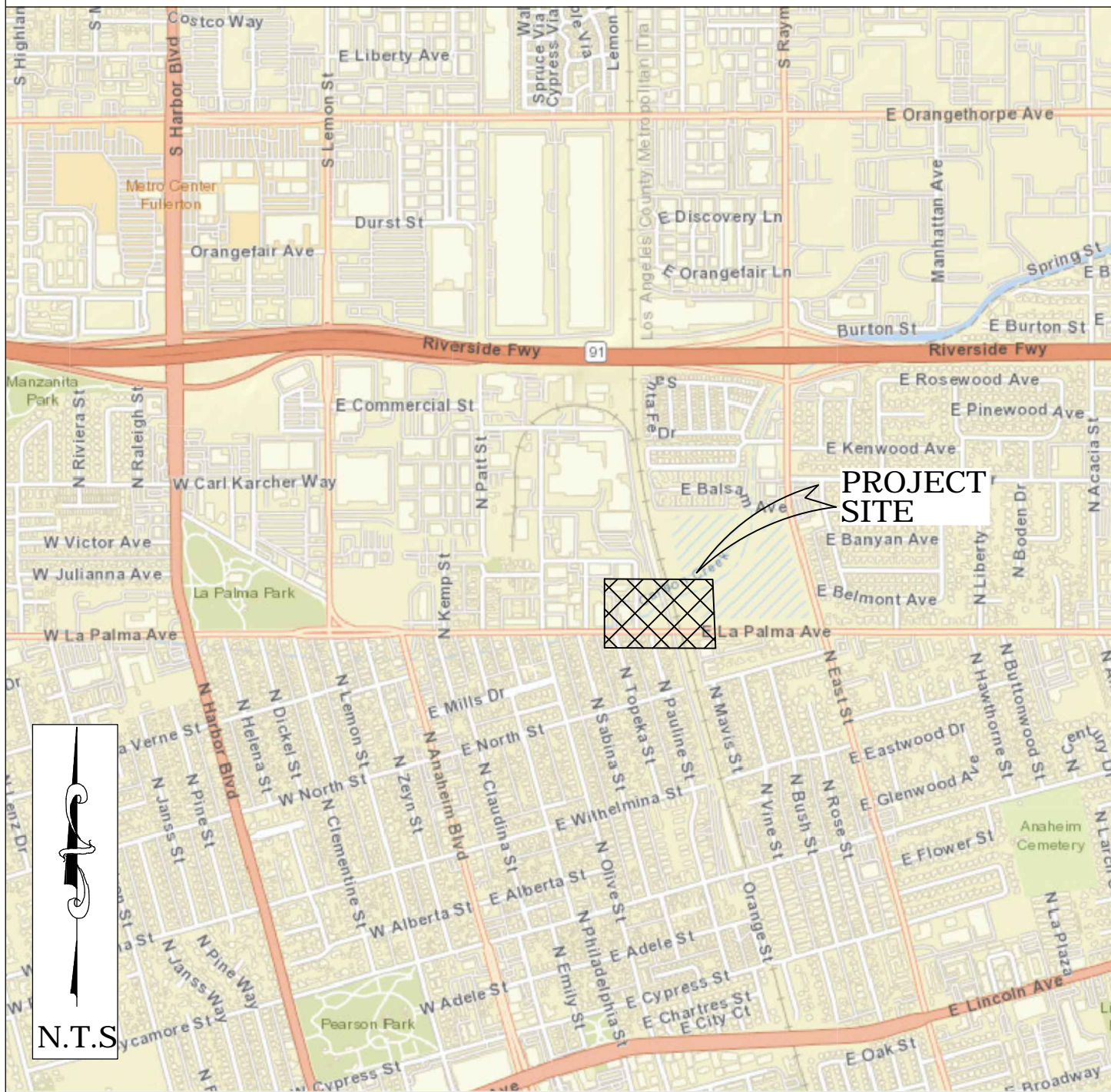


OC PUBLIC WORKS DEPARTMENT
JAMES TREADAWAY, DIRECTOR OF PUBLIC WORKS
KEVIN HILLS, COUNTY SURVEYOR
CARBON CREEK (B01)



EMERGENCY REPAIR

LOCATION MAP



SENIOR LAND SURVEYOR'S CERTIFICATE:

THIS MAP CORRECTLY REPRESENTS A SURVEY MADE BY ME OR UNDER MY DIRECTION IN CONFORMANCE WITH REQUIREMENTS OF THE PROFESSIONAL LAND SURVEYORS' ACT; THIS 16 DAY OF AUGUST, 2023.

Elliott Medina
BOOK SIGN 1877Y554-15QZ28RL

ELLIOTT MEDINA, PLS. SENIOR LAND SURVEYOR



DEPUTY COUNTY SURVEYOR'S STATEMENT:

THIS MAP HAS BEEN EXAMINED IN ACCORDANCE WITH THE PROFESSIONAL LAND SURVEYORS' ACT; THIS 16 DAY OF AUGUST, 2023.

Michael Lafontaine
BOOK SIGN 1877Y554-15QZ28RL

MICHAEL LAFONTAINE, PLS. DEPUTY COUNTY SURVEYOR



U.S. Survey
Foot
OC Public Works
OC Survey/Field Services
Boundary Analysis & Mapping



BASIS OF BEARINGS N80°43'39.27"E 46,762.53'

FOUND CGPS "SACY"
N: 2218016.19
E: 6061432.27
THIS IS A CONTINUOUS GPS STATION (CGPS) AND IS PART OF THE CALIFORNIA SPATIAL REFERENCE NETWORK (CSRN).

FOUND CGPS "OEOC"
N: 2225550.98
E: 6107583.77
THIS IS A CONTINUOUS GPS STATION (CGPS) AND IS PART OF THE CALIFORNIA SPATIAL REFERENCE NETWORK (CSRN).

TOPOGRAPHIC MAPPING PROJECT

BASIS OF BEARINGS

THE BASIS OF BEARINGS FOR THIS SURVEY IS BASED ON THE CALIFORNIA COORDINATE SYSTEM (CCS83), ZONE VI, NAD 83, OCS (2017.50) EPOCH ADJUSTMENT, AS DETERMINED LOCALLY BY A LINE BETWEEN CONTINUOUS GLOBAL POSITIONING STATIONS CGPS STATIONS (SACY) AND (OEOC) BEING NORTH 80°43'39.27" EAST AS DERIVED FROM THE COORDINATES PUBLISHED BY THE CALIFORNIA SPATIAL REFERENCE CENTER (CSRN) ALONG WITH DATA SHEETS ON FILE IN THE OFFICE OF THE ORANGE COUNTY SURVEYOR.

HORIZONTAL DATUM

COORDINATES SHOWN ARE BASED ON THE CALIFORNIA COORDINATE SYSTEM (CCS83), ZONE VI, NAD 83, OCS (2017.50) EPOCH ADJUSTMENT.
ALL DISTANCES SHOWN ARE GRID, UNLESS OTHERWISE NOTED. TO OBTAIN GROUND DISTANCES MULTIPLY GRID BY A COMBINED FACTOR OF 1.00000851.
THIS COMBINATION FACTOR WAS HELD AT: CP# 301
N: 2256005.56 E: 6057359.29 EL: 164.83'
ALL DISTANCES ARE BASED ON THE U.S. SURVEY FOOT.

VERTICAL DATUM

O.C.S. BM. 2F-24-04 ELEV. = 151.751' YEAR LEVELED: 2005
NAVD 1988 (O.C.S. 1995 ADJUSTMENT)
DESCRIPTION: FOUND 3 3/4" OCS ALUMINUM BENCHMARK DISK STAMPED "2F-24-04", SET IN THE NORTHWESTERLY CORNER OF A 9.2 FT. BY 4.2 FT. CONCRETE CATCH BASIN. MONUMENT IS LOCATED ALONG THE SOUTHERLY SIDE OF LA VERNE STREET, 600 FT. SOUTHERLY ALONG HARBOR BOULEVARD FROM THE CENTERLINE OF LA PALMA AVENUE, 120 FT. EASTERLY OF THE CENTERLINE OF HARBOR AND 17 FT. SOUTHERLY OF THE CENTERLINE OF LA VERNE. MONUMENT IS SET LEVEL WITH THE SIDEWALK

NOTES

THE SURVEY INFORMATION SHOWN HEREON IS TO BE USED FOR TOPOGRAPHIC RELATIONSHIPS ONLY AND IS NOT INTENDED FOR LAND ACQUISITION OR BOUNDARY PURPOSES.

SHEET INDEX

SHEET NO.	DESCRIPTION
SHEET 1	TITLE SHEET
SHEET 2	BOUNDARY SHEET
SHEETS 3-4	TOPOGRAPHIC MAP

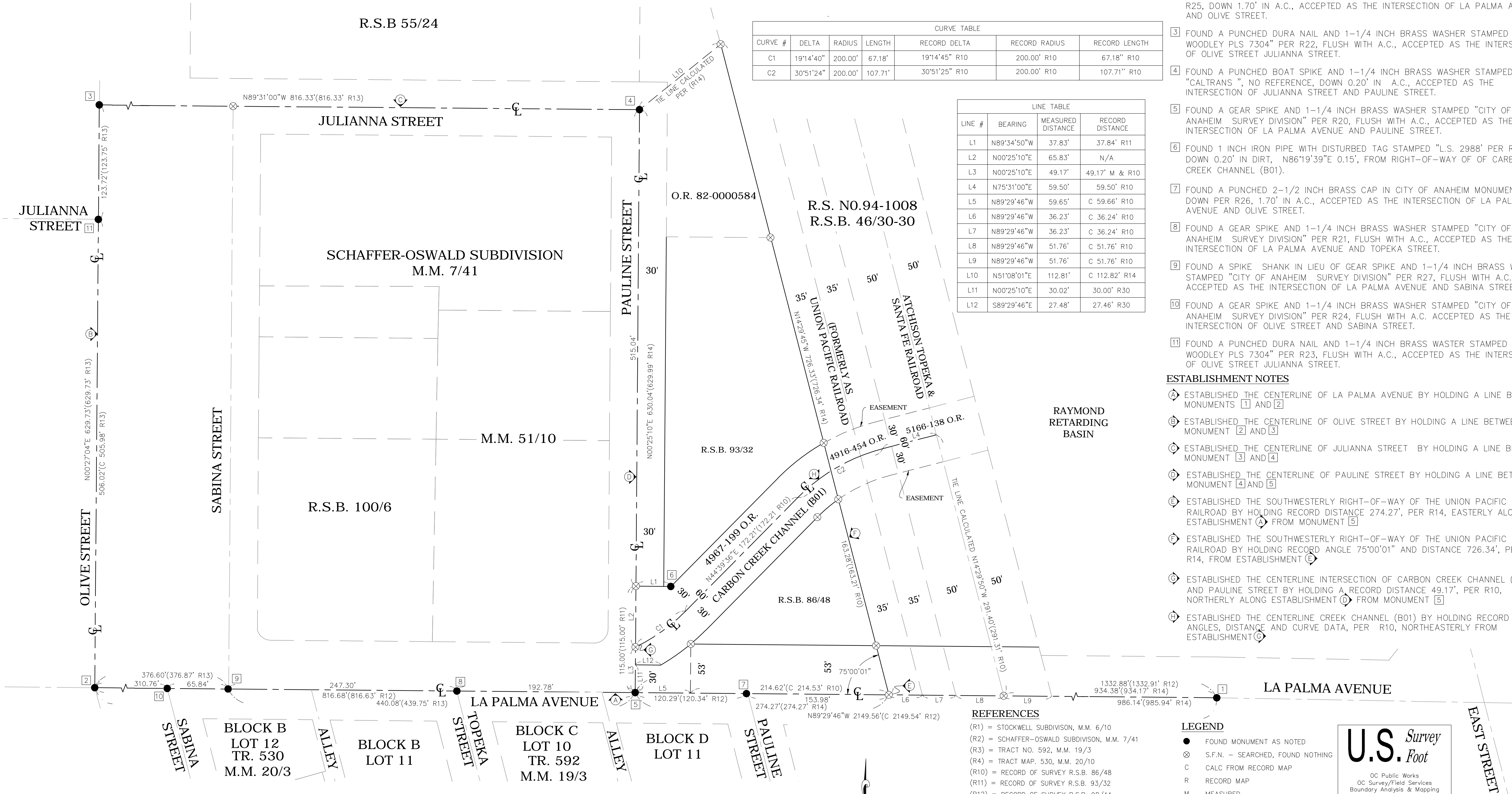
BASIS OF STATIONING

THE BASIS FOR STATIONING IS STA 133+44.46 PER RECORD PLAN B01-701-03A DATED FEBRUARY 1959.

PURPOSE OF SURVEY

THE PURPOSE OF SURVEY IS TO PROVIDE A TOPOGRAPHIC MAP OF FAILED RECTANGULAR CONCRETE CHANNEL WALLS OF CARBON CREEK CHANNEL (B01)

				COUNTY OF ORANGE OC PUBLIC WORKS OC SURVEY/FIELD SERVICES/BOUNDARY ANALYSIS & MAPPING	
				CARBON CREEK (B01) EMERGENCY REPAIR	
				TITLE SHEET	
				PROJECT LIMITS: ALONG B01 FROM THE EASTERLY RIGHT-OF-WAY OF PAULINE STREET TO THE WESTERLY RIGHT-OF-WAY OF THE UNION PACIFIC RAILROAD	
		DATE OF SURVEY: 05/11/2023		BY: MARTINEZ & CREW	
		MAPPING		BY: K. MARTINEZ	
		OFFICE CHECK		BY: E. MEDINA, PLS	
		FIELD CHECK		BY: MARTINEZ & CREW	
		SCALE: N.T.S.		W.O. #EF0860	
				FILE # 2223PW-OP0008	
		FILE: CARBON CREEK CHANNEL TOPO 2023.DWG			
MARK		DATE		ITEM	
				REVISIONS	
				SHEET NO. 1 of 4	



CURVE TABLE						
CURVE #	DELTA	RADIUS	LENGTH	RECORD DELTA	RECORD RADIUS	RECORD LENGTH
C1	19°14'40"	200.00'	67.18'	19°14'45" R10	200.00' R10	67.18" R10
C2	30°51'24"	200.00'	107.71'	30°51'25" R10	200.00' R10	107.71" R10

LINE TABLE			
LINE #	BEARING	MEASURED DISTANCE	RECORD DISTANCE
L1	N89°34'50"W	37.83'	37.84' R11
L2	N00°25'10"E	65.83'	N/A
L3	N00°25'10"E	49.17'	49.17' M & R10
L4	N75°31'00"E	59.50'	59.50' R10
L5	N89°29'46"W	59.65'	C 59.66' R10
L6	N89°29'46"W	36.23'	C 36.24' R10
L7	N89°29'46"W	36.23'	C 36.24' R10
L8	N89°29'46"W	51.76'	C 51.76' R10
L9	N89°29'46"W	51.76'	C 51.76' R10
L10	N51°08'01"E	112.81'	C 112.82' R14
L11	N00°25'10"E	30.02'	30.00' R30
L12	S89°29'46"E	27.48'	27.46' R30

MONUMENT NOTES

- [1] FOUND 2–1/2 INCH CAP STAMPED O.C.S. IN O.C.S. MONUMENT WELL PER R12, DOWN 1.70' IN A.C., ACCEPTED AS SOUTHEAST CORNER OF SECTION 3 T4S R10W.
- [2] FOUND A PUNCHED 2 INCH BRASS CAP IN CITY OF ANAHEIM MONUMENT WELL PER R25, DOWN 1.70' IN A.C., ACCEPTED AS THE INTERSECTION OF LA PALMA AVENUE AND OLIVE STREET.
- [3] FOUND A PUNCHED DURA NAIL AND 1–1/4 INCH BRASS WASHER STAMPED "D WOODLEY PLS 7304" PER R22, FLUSH WITH A.C., ACCEPTED AS THE INTERSECTION OF OLIVE STREET JULIANNA STREET.
- [4] FOUND A PUNCHED BOAT SPIKE AND 1–1/4 INCH BRASS WASHER STAMPED "CALTRANS ", NO REFERENCE, DOWN 0.20' IN A.C., ACCEPTED AS THE INTERSECTION OF JULIANNA STREET AND PAULINE STREET.
- [5] FOUND A GEAR SPIKE AND 1–1/4 INCH BRASS WASHER STAMPED "CITY OF ANAHEIM SURVEY DIVISION" PER R20, FLUSH WITH A.C., ACCEPTED AS THE INTERSECTION OF LA PALMA AVENUE AND PAULINE STREET.
- [6] FOUND 1 INCH IRON PIPE WITH DISTURBED TAG STAMPED "L.S. 2988' PER R11, DOWN 0.20' IN DIRT, N86°19'39"E 0.15', FROM RIGHT-OF-WAY OF OF CARBON CREEK CHANNEL (B01).
- [7] FOUND A PUNCHED 2–1/2 INCH BRASS CAP IN CITY OF ANAHEIM MONUMENT WELL DOWN PER R26, 1.70' IN A.C., ACCEPTED AS THE INTERSECTION OF LA PALMA AVENUE AND OLIVE STREET.
- [8] FOUND A GEAR SPIKE AND 1–1/4 INCH BRASS WASHER STAMPED "CITY OF ANAHEIM SURVEY DIVISION" PER R21, FLUSH WITH A.C., ACCEPTED AS THE INTERSECTION OF LA PALMA AVENUE AND TOPEKA STREET.
- [9] FOUND A SPIKE SHANK IN LIEU OF GEAR SPIKE AND 1–1/4 INCH BRASS WASHER STAMPED "CITY OF ANAHEIM SURVEY DIVISION" PER R27, FLUSH WITH A.C., ACCEPTED AS THE INTERSECTION OF LA PALMA AVENUE AND SABINA STREET.
- [10] FOUND A GEAR SPIKE AND 1–1/4 INCH BRASS WASHER STAMPED "CITY OF ANAHEIM SURVEY DIVISION" PER R24, FLUSH WITH A.C. ACCEPTED AS THE INTERSECTION OF OLIVE STREET AND SABINA STREET.
- [11] FOUND A PUNCHED DURA NAIL AND 1–1/4 INCH BRASS WASTER STAMPED "D WOODLEY PLS 7304" PER R23, FLUSH WITH A.C., ACCEPTED AS THE INTERSECTION OF OLIVE STREET JULIANNA STREET.

ESTABLISHMENT NOTES

- [A] ESTABLISHED THE CENTERLINE OF LA PALMA AVENUE BY HOLDING A LINE BETWEEN MONUMENTS [1] AND [2]
- [B] ESTABLISHED THE CENTERLINE OF OLIVE STREET BY HOLDING A LINE BETWEEN MONUMENT [2] AND [3]
- [C] ESTABLISHED THE CENTERLINE OF JULIANNA STREET BY HOLDING A LINE BETWEEN MONUMENT [3] AND [4]
- [D] ESTABLISHED THE CENTERLINE OF PAULINE STREET BY HOLDING A LINE BETWEEN MONUMENT [4] AND [5]
- [E] ESTABLISHED THE SOUTHWESTERLY RIGHT-OF-WAY OF THE UNION PACIFIC RAILROAD BY HOLDING RECORD DISTANCE 274.27', PER R14, EASTERLY ALONG ESTABLISHMENT [A] FROM MONUMENT [5]
- [F] ESTABLISHED THE SOUTHWESTERLY RIGHT-OF-WAY OF THE UNION PACIFIC RAILROAD BY HOLDING RECORD ANGLE 75°00'01" AND DISTANCE 726.34', PER R14, FROM ESTABLISHMENT [B]
- [G] ESTABLISHED THE CENTERLINE INTERSECTION OF CARBON CREEK CHANNEL (B01) AND PAULINE STREET BY HOLDING A RECORD DISTANCE 49.17', PER R10, NORTHERLY ALONG ESTABLISHMENT [D] FROM MONUMENT [5]
- [H] ESTABLISHED THE CENTERLINE CREEK CHANNEL (B01) BY HOLDING RECORD ANGLES, DISTANCE AND CURVE DATA, PER R10, NORTHEASTERLY FROM ESTABLISHMENT [G]

REFERENCES

- (R1) = STOCKWELL SUBDIVISION, M.M. 6/10
- (R2) = SCHAFER-OSWALD SUBDIVISION, M.M. 7/41
- (R3) = TRACT NO. 592, M.M. 19/3
- (R4) = TRACT MAP. 530, M.M. 20/10
- (R10) = RECORD OF SURVEY R.S.B. 86/48
- (R11) = RECORD OF SURVEY R.S.B. 93/32
- (R12) = RECORD OF SURVEY R.S.B. 98/44
- (R13) = RECORD OF SURVEY R.S.B. 100/6
- (R14) = RECORD OF SURVEY NO. 94-1008, R.S.B. 146/30-32
- (R20) = CORNER RECORD, C.R. 2009-2204
- (R21) = CORNER RECORD, C.R. 2009-2674
- (R22) = CORNER RECORD, C.R. 2016-0676
- (R23) = CORNER RECORD, C.R. 2016-0677
- (R24) = CORNER RECORD, C.R. 2009-2676
- (R25) = ANAHEIM C.E.T.B. 18-59
- (R26) = ANAHEIM C.E.T.B. 18-58
- (R27) = ANAHEIM C.E.T.B. 53-68
- (R30) = 4969/1999 O.R.
- (R31) = 4916/454 O.R.
- (R32) = 5166/138 O.R.

LEGEND

- FOUND MONUMENT AS NOTED
- ⊗ S.F.N. – SEARCHED, FOUND NOTHING
- C CALC FROM RECORD MAP
- R RECORD MAP
- M MEASURED

HORIZONTAL DATUM

COORDINATES SHOWN ARE BASED ON THE CALIFORNIA COORDINATE SYSTEM (CCS83), ZONE VI, NAD 83, OCS (2017.50) EPOCH ADJUSTMENT.

ALL DISTANCES SHOWN ARE GRID, UNLESS OTHERWISE NOTED. TO OBTAIN GROUND DISTANCE MULTIPLY A GRID DISTANCE BY 1.00000851.

THIS COMBINATION FACTOR WAS HELD AT: CP# 301
N: 2256005.56 E: 6057359.29 EL: 164.83'

RECORD DISTANCES SHOWN HEREON ARE AS THEY APPEAR ON THE DOCUMENT OF RECORD. DISTANCES MAY BE EITHER GRID OR GROUND, AS PER SAID RECORD.

ALL DISTANCES ARE BASED ON THE U.S. SURVEY FOOT.

BASIS OF BEARINGS

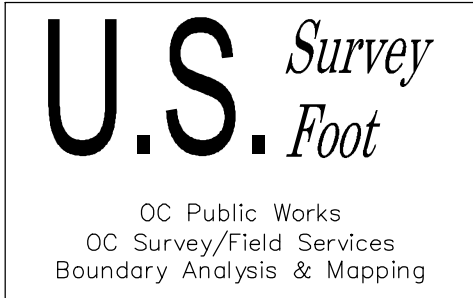
THE BASIS OF BEARINGS FOR THIS SURVEY IS BASED ON THE CALIFORNIA COORDINATE SYSTEM (CCS83), ZONE VI, NAD 83, OCS (2017.50) EPOCH ADJUSTMENT, AS DETERMINED LOCALLY BY A LINE BETWEEN CONTINUOUS GLOBAL POSITIONING STATIONS CGPS STATIONS (SACY) AND (OEOC) BEING NORTH 80°43'39.27" EAST AS DERIVED FROM THE COORDINATES PUBLISHED BY THE CALIFORNIA SPATIAL REFERENCE CENTER (CSRC) ALONG WITH DATA SHEETS ON FILE IN THE OFFICE OF THE ORANGE COUNTY SURVEYOR.

NOTES

ALL BOUNDARY LINES NOT SHOWN IN BOLD ARE FOR GRAPHICAL REPRESENTATION ONLY.

REFERENCE DOCUMENTS IN THE REFERENCE LEGEND ARE LIVE HYPERLINKS TO SAID DOCUMENT.

MONUMENT SYMBOLS CONTAIN LIVE HYPERLINKS TO IMAGES, IF THEY EXIST, OF RESPECTIVE MONUMENT.



		COUNTY OF ORANGE OC PUBLIC WORKS OC SURVEY/FIELD SERVICES/BOUNDARY ANALYSIS & MAPPING			
		CARBON CREEK (B01) EMERGENCY REPAIR			
		BOUNDARY MAP			
		PROJECT LIMITS: ALONG B01 FROM THE EASTERLY RIGHT-OF-WAY OF PAULINE STREET TO THE WESTERLY RIGHT-OF-WAY OF THE UNION PACIFIC RAILROAD			
		DATE OF SURVEY:05/11/2023		BY:MARTINEZ & CREW	
		MAPPING		BY:OFFICE SURVEYOR	
		OFFICE CHECK		BY:E.MEDINA, PLS	
		FIELD CHECK		BY:MARTINEZ & CREW	
		SCALE:1" = 50'		W.O. #EF0860	
		FILE:CARBON CREEK CHANNEL BOUNDARY 2023.DWG		FILE # 2223PW-OP0008	
MARK	DATE	ITEM		SHEET NO. 2 of 4	
REVISIONS					

LEGEND

SYMBOL

- Bush
- Control Point
- Fire Hydrant
- Gate, Double
- Gate, Single
- Grate Inlet
- Guy Wire Anchor
- Light Pole, Double
- Manhole Storm Drain
- Monitor Well
- Post
- Sewer Cleanout
- Sign Board
- Sign Post
- Tree
- Utility Pole, Underground
- Valve Irrigation
- Water Line
- Appurtenance-Undefined

LINE PATTERN KEY

- Block Wall
- Bush Row Outline
- Centerline
- Concrete Wall
- Easement
- Edge of Concrete
- Edge of Asphalt Pavement
- Fence Chainlink
- Fence Steel
- Flowline
- Hinge Point
- Mow Strip
- Right of Way
- Steel Support Brace

ABBREVIATION

- | | | | |
|-----|-----------------|-----|---------------------------|
| CL | Centerline | BTM | Bottom |
| CLR | Clearance | DWS | Detectable Warning System |
| CP | Control Point | DWY | Driveway |
| CLF | Chainlink Fence | EL | Elevation |
| | | TW | Top of Wall |

AREA PATTERN KEY

- Concrete
- Dirt
- Gravel
- Rip Rap

SEE SHEET 4

(FORMERLY UNION PACIFIC RAILROAD)

SELF & RV STORAGE

APN: 267-071-05
710 E LA PALMA AVENUE ANAHEIM

CP# 301
SET LEAD BRASS TACK &
1-1/4" TAG STAMPED "OCS CP"
FLUSH WITH TOP OF CURB
N: 2256005.56
E: 6057359.29
EL: 164.83'

PAULINE STREET

BEGIN
ALIGNMENT
133+44.46
N: 2255988.86
E: 6057331.92

LA PALMA AVENUE

U.S. Survey
Foot

OC Public Works
OC Survey/Field Services
Boundary Analysis & Mapping

COUNTY OF ORANGE
OC PUBLIC WORKS
OC SURVEY/FIELD SERVICES/BOUNDARY ANALYSIS & MAPPING

CARBON CREEK (B01)
EMERGENCY REPAIR

TOPOGRAPHIC MAP
PROJECT LIMITS: ALONG B01 FROM THE EASTERLY RIGHT-OF-WAY OF PAULINE STREET
TO THE WESTERLY RIGHT-OF-WAY OF THE UNION PACIFIC RAILROAD
DATE OF SURVEY: 05/11/2023
BY: K.MARTINEZ & CREW
MAPPING
BY: E.MEDINA, PLS
OFFICE CHECK
BY: K.MARTINEZ & CREW
FIELD CHECK
SCALE: 1:10
W.O. #EF0860
FILE #2223PW-OP0008
FILE: CARBON_CREEK_CHANNEL_TOPO_2023.DWG

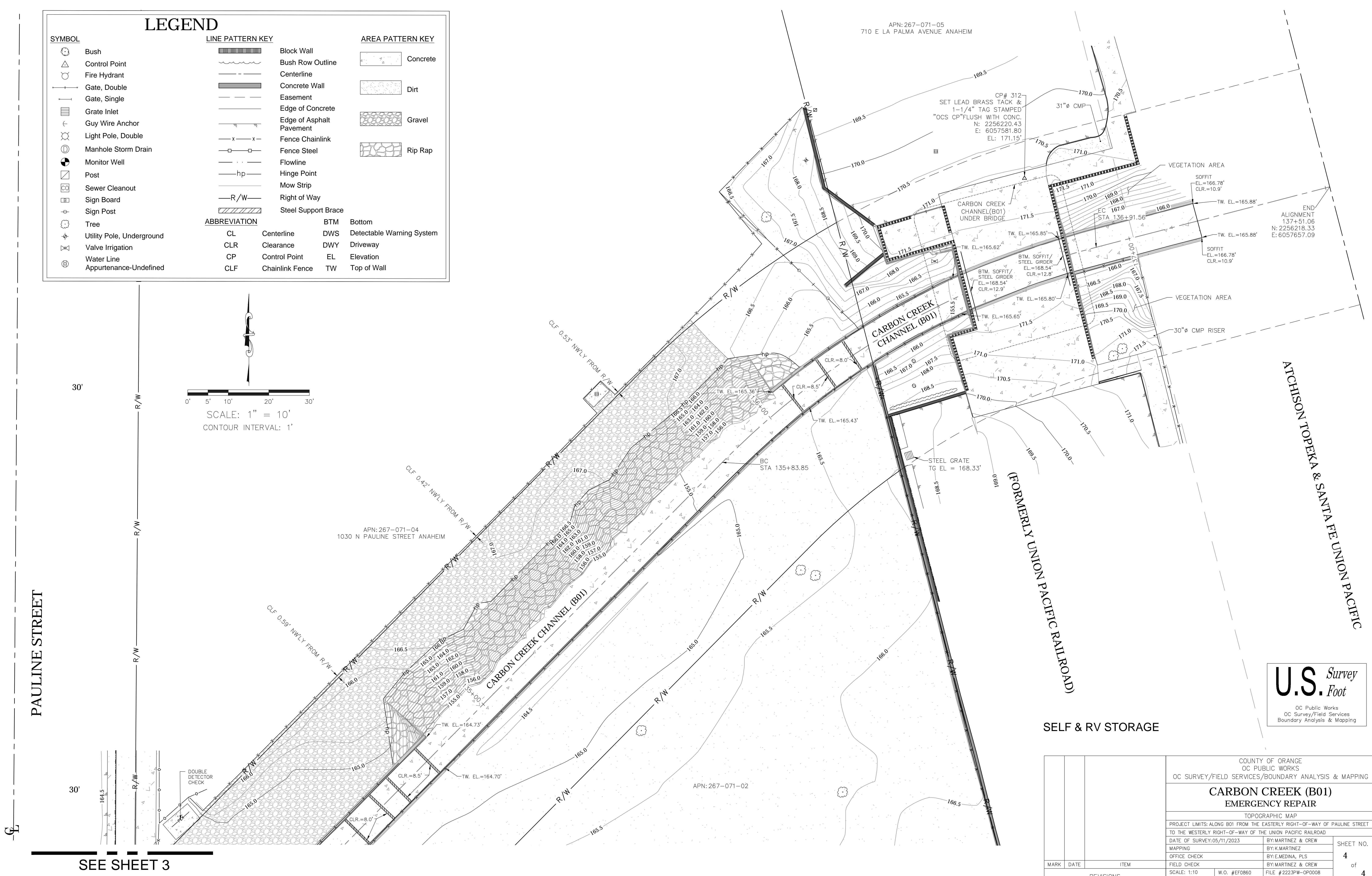
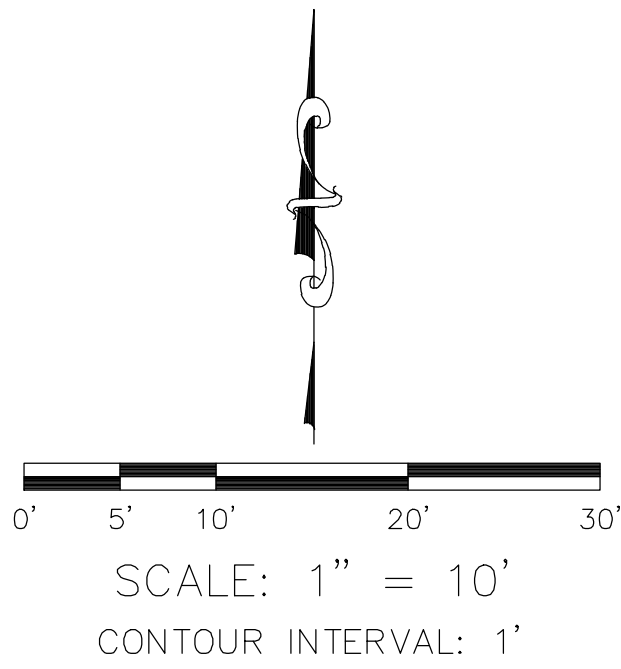
SHEET NO.
3
of
4

MARK	DATE	ITEM
REVISIONS		

LEGEND

SYMBOL	LINE PATTERN KEY	AREA PATTERN KEY

ABBREVIATION		
CL	Centerline	BTM Bottom
CLR	Clearance	DWS Detectable Warning System
CP	Control Point	DWY Driveway
CLF	Chainlink Fence	EL Elevation
		TW Top of Wall



SEE SHEET 3

U.S. Survey
Foot

OC Public Works
OC Survey/Field Services
Boundary Analysis & Mapping

MARK	DATE	ITEM	COUNTY OF ORANGE OC PUBLIC WORKS OC SURVEY/FIELD SERVICES/BOUNDARY ANALYSIS & MAPPING			
			CARBON CREEK (B01) EMERGENCY REPAIR			
			TOPOGRAPHIC MAP			
			PROJECT LIMITS: ALONG B01 FROM THE EASTERLY RIGHT-OF-WAY OF PAULINE STREET TO THE WESTERLY RIGHT-OF-WAY OF THE UNION PACIFIC RAILROAD			
			DATE OF SURVEY: 05/11/2023		SHEET NO. 4 of 4	
			MAPPING			
			OFFICE CHECK			
			FIELD CHECK			
			SCALE: 1:10		W.O. #EF0860	FILE #2223PW-OP0008
			REVISIONS			FILE: CARBON_CREEK_CHANNEL_TOPO_2023.DWG