



OC PUBLIC WORKS DEPARTMENT
JAMES TREADAWAY, DIRECTOR OF PUBLIC WORKS
KEVIN HILLS, COUNTY SURVEYOR
CARBON CREEK CHANNEL (B01)

AS BUILT



FOUND CGPS "CCCS"
N: 2261350.67'
E: 6071417.81'
THIS IS A CONTINUOUS GPS
STATION (CGPS) AND IS PART
OF THE CALIFORNIA SPATIAL
REFERENCE NETWORK (CSRN),
FROM WHICH DATA CAN BE
DOWNLOADED HERE:
[HTTP://SOPACCSRC.UCSD.EDU/](http://SOPACCSRC.UCSD.EDU/).

LOCATION MAP



SENIOR LAND SURVEYOR'S CERTIFICATE:

THIS MAP CORRECTLY REPRESENTS A SURVEY MADE BY ME
OR UNDER MY DIRECTION IN CONFORMANCE WITH
REQUIREMENTS OF THE PROFESSIONAL LAND SURVEYOR'S
ACT; THIS 24TH DAY OF MAY, 2021.



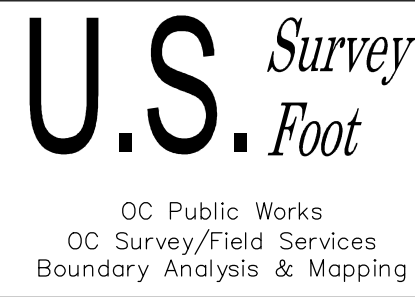
JESOM MORENO, PLS. SENIOR LAND SURVEYOR

DEPUTY COUNTY SURVEYOR'S STATEMENT:

THIS MAP HAS BEEN EXAMINED IN ACCORDANCE WITH THE
PROFESSIONAL LAND SURVEYOR'S ACT; THIS 24TH DAY
OF MAY, 2021.



WADE WEAVER, PLS. DEPUTY COUNTY SURVEYOR



FOUND CGPS "BLSA"
N: 2239164.39'
E: 6021324.82'
THIS IS A CONTINUOUS GPS STATION
(CGPS) AND IS PART OF THE CALIFORNIA
SPATIAL REFERENCE NETWORK (CSRN),
FROM WHICH DATA CAN BE DOWNLOADED
HERE: [HTTP://SOPACCSRC.UCSD.EDU/](http://SOPACCSRC.UCSD.EDU/).



BASIS OF BEARINGS

THE BASIS OF BEARINGS FOR THIS SURVEY IS BASED ON THE CALIFORNIA
COORDINATE SYSTEM (CCS83), ZONE VI, NAD 83, OCS (2017.50) EPOCH
ADJUSTMENT, AS DETERMINED LOCALLY BY A LINE BETWEEN CONTINUOUS
GLOBAL POSITIONING STATIONS CGPS STATIONS (CCCS) AND (BLSA) BEING
NORTH 66°06'41" EAST AS DERIVED FROM THE COORDINATES PUBLISHED BY
THE CALIFORNIA SPATIAL REFERENCE CENTER (CSRN) ALONG WITH DATA
SHEETS ON FILE IN THE OFFICE OF THE ORANGE COUNTY SURVEYOR.

HORIZONTAL DATUM

COORDINATES SHOWN ARE BASED ON THE CALIFORNIA COORDINATE SYSTEM
(CCS83), ZONE VI, NAD 83, OCS (2017.50) EPOCH ADJUSTMENT.
ALL DISTANCES SHOWN ARE GRID, UNLESS OTHERWISE NOTED. TO OBTAIN
GROUND DISTANCES MULTIPLY GRID BY A COMBINED FACTOR OF 1.000006930.
COMBINATION FACTOR WAS HELD AT: #105
N: 2252491.48' E: 6038470.57' ELEVATION= 97.93'

VERTICAL DATUM

O.C.S. BM. 1G-143-69 ELEV. = 94.27 YEAR LEVELED: 2005
NAVD 1988 (O.C.S. 1995 ADJUSTMENT)
DESCRIPTION: FOUND 3 3/4" OCS ALUMINUM BENCHMARK DISK STAMPED
"1G-143-69", SET IN THE NORTHERLY END OF A CONCRETE HEADWALL FOR A
FLOOD CONTROL CHANNEL. MONUMENT IS LOCATED ALONG THE EASTERLY SIDE
OF MAGNOLIA AVENUE, 0.2 MILES NORTHERLY OF THE CENTERLINE OF LINCOLN
AVENUE AND 38 FT. EASTERLY OF MAGNOLIA. MONUMENT IS SET LEVEL WITH
THE SIDEWALK.

NOTES

THE SURVEY INFORMATION SHOWN HEREON IS TO BE USED FOR TOPOGRAPHIC
RELATIONSHIPS AND BOUNDARY LOCATION ONLY AND IS NOT INTENDED FOR
LAND ACQUISITION.
PARCELS SHOWN WITHOUT BEARING AND DISTANCES ARE FOR GRAPHICAL
PURPOSES.

SHEET INDEX

SHEET	NO.	DESCRIPTION
SHEET 1	1	TITLE SHEET
SHEET 2-3	2-3	BOUNDARY
SHEET 4-6	4-6	TOPOGRAPHIC MAP

BASIS OF STATIONING

THE CONSTRUCTION CENTERLINE ALIGNMENT SHOWN HEREON WAS ESTABLISHED BY
HOLDING 311+82.32' PER DWG. NO. B01-701-2-A DATED JULY, 1959 AT THE
CENTERLINE INTERSECTION OF MAGNOLIA AVE. AND THE DESCRIBED LINE OF BOOK
5175 PAGE 274 O.R. INCREASING IN STATION UPSTREAM TO GILBERT ST.

PURPOSE OF SURVEY

THE PURPOSE OF THE SURVEY IS TO PROVIDE A TOPOGRAPHIC MAP AND RIGHT
OF WAY ESTABLISHMENT FOR THIS PORTION OF THE CARBON CREEK CHANNEL
(B01).

AS-BUILT MAPPING PROJECT

COUNTY OF ORANGE OC PUBLIC WORKS OC SURVEY/FIELD SERVICES/BOUNDARY ANALYSIS & MAPPING			
CARBON CREEK CHANNEL (B01) AS BUILT			
TITLE SHEET			
PROJECT LIMITS: FROM STA. 313+49.18' TO STA. 327+75.20' UPSTREAM MAGNOLIA AVE. TO N. GILBERT ST.			
DATE OF SURVEY: 01/14/2021	BY: J. JOHNS & PARTY	SHEET NO. 1 of 6	
MAPPING	BY: J. ISLAS		
OFFICE CHECK	BY: J. JESOM, PLS	FILE #1920PW-IN0012	
FIELD CHECK	BY: J. JOHNS & PARTY		
SCALE: N.T.S.	W.O. #EF21210	FILE: CARBON CREEK CHANNEL AS-BUILT-TOPO-2021.DWG	
MARK	DATE	ITEM	REVISIONS

ESTABLISHMENT NOTES

- Ⓐ ESTABLISHED THE SW CORNER OF THE SW 1/4 SECTION 7 TOWNSHIP 4S, RANGE 10W S.B.M., RANCHO LOS COYOTES BY HOLDING RECORD DISTANCE PER R2, & R8 N'LY FROM FOUND MONUMENT 1 ALONG LINE ESTABLISHMENT ⓐ
- Ⓑ ESTABLISHED THE SW CORNER OF PARCEL 1 OF R19 HOLDING RECORD DISTANCE PER R19 N'LY FROM ESTABLISHMENT NOTE Ⓐ ALONG LINE ESTABLISHMENT ⓐ
- Ⓒ ESTABLISHED THE POINT OF BEGINNING OF DESCRIBED LINE PER R20, R21, R22 & R23 HOLDING RECORD DISTANCE N'LY FROM ESTABLISHMENT NOTE Ⓑ ALONG LINE ESTABLISHMENT ⓐ
- Ⓓ ESTABLISHED THE NW CORNER OF R19 HOLDING RECORD DISTANCE N'LY FROM ESTABLISHMENT POINT Ⓒ ALONG LINE ESTABLISHMENT ⓐ
- Ⓔ S.F.N. ESTABLISHED THE NW CORNER OF THE SW 1/4 OF THE SW 1/4 SECTION 7 TOWNSHIP 4S, RANGE 10W S.B.M., RANCHO LOS COYOTES BY PROPORTION PER R1 BETWEEN ESTABLISHMENT NOTE Ⓐ & FOUND MONUMENT 2
- Ⓕ S.F.N. ESTABLISHED THE INTERSECTION OF THE N'LY PROLONGATION OF THE W'LY LINE OF R3 & LINE ESTABLISHMENT Ⓓ HOLDING RECORD DISTANCE W'LY FROM ESTABLISHMENT NOTE Ⓕ ALONG LINE ESTABLISHMENT ⓐ
- Ⓖ S.F.N. ESTABLISHED THE NE CORNER OF THE NW 1/4 OF THE SW 1/4 SECTION 7 TOWNSHIP 4S, RANGE 10W S.B.M., RANCHO LOS COYOTES BY PROPORTION PER R1 BETWEEN FOUND MONUMENTS 2 & 3
- Ⓗ ESTABLISHED THE NE CORNER OF R19 HOLDING RECORD DISTANCE N'LY FROM ESTABLISHMENT NOTE Ⓓ ALONG LINE ESTABLISHMENT ⓐ
- Ⓙ ESTABLISHED THE S'LY TERMINUS OF THAT CERTAIN COURSE DESCRIBED IN R20, R22, R23, & R23 AS BEING DISTANT S00°37'35"E, 668.84 FROM THE INTERSECTION OF GILBERT ST. & CRESCENT AVE, MONUMENT NOTE 3
- ⓫ ESTABLISHED THE SE CORNER OF R19 HOLDING RECORD DISTANCE PER R19 S'LY FROM FOUND MONUMENT 3 ALONG LINE ESTABLISHMENT ⓐ
- Ⓚ S.F.N. ESTABLISHED THE NE CORNER OF THE SE 1/4 OF THE SW 1/4 SECTION 7, TOWNSHIP 4S, RANGE 10W S.B.M., RANCHO LOS COYOTES BY PROPORTION PER R1 BETWEEN ESTABLISHMENT NOTE 1 & FOUND MONUMENT 3
- Ⓛ ESTABLISHED THE SE CORNER OF THE SW 1/4 SECTION 7, TOWNSHIP 4S, RANGE 10W S.B.M., RANCHO LOS COYOTES HOLDING RECORD DISTANCE PER R2 & R8 N'LY FROM MONUMENT NOTE 4 ALONG LINE ESTABLISHMENT ⓐ
- Ⓜ S.F.N. ESTABLISHED THE SW CORNER OF THE SE 1/4 OF THE SW 1/4 SECTION 7, TOWNSHIP 4S, RANGE 10W S.B.M., RANCHO LOS COYOTES BY PROPORTION PER R1 BETWEEN ESTABLISHMENT NOTES Ⓐ & 1
- Ⓝ S.F.N. ESTABLISHED THE CENTER OF THE SW 1/4 SECTION 7, TOWNSHIP 4S, RANGE 10W S.B.M., RANCHO LOS COYOTES BY INTERSECTION FROM PROPORTIONED ESTABLISHMENT NOTES Ⓔ Ⓒ Ⓚ & Ⓜ
- Ⓞ S.F.N. ESTABLISHED THE SE CORNER OF THE WEST 16.58 ACRES OF THE NW 1/4 OF THE SW 1/4 SECTION 7, TOWNSHIP 4S, RANGE 10W, S.B.M. RANCH LOS COYOTES BY INTERSECTION HOLDING THE S'LY PROLONGATION OF LINE ESTABLISHMENT ⓫ S'LY FROM ESTABLISHMENT NOTE Ⓔ & E'LY FROM ESTABLISHMENT NOTE Ⓓ ALONG LINE ESTABLISHMENT ⓫
- Ⓟ S.F.N. ESTABLISHED THE NW CORNER OF THE EAST 20 ACRES OF THE SW 1/4 OF THE SW 1/4 SECTION 7, TOWNSHIP 4S, RANGE 10E, S.B.M., RANCHO LOS COYOTES HOLDING RECORD DISTANCE PER R4 E'LY FROM ESTABLISHMENT NOTE E ALONG LINE ESTABLISHMENT ⓫
- Ⓠ ESTABLISHED THE W'LY LINE OF THE SW 1/4 OF SECTION 7, TOWNSHIP 4S, RANGE 10W, S.B.M., RANCHO LOS COYOTES BETWEEN ESTABLISHMENT NOTE A & FOUND MONUMENT 2 ESTABLISHED & THE C/L OF MAGNOLIA AVE BETWEEN FOUND MONUMENTS 1 & 2
- Ⓡ ESTABLISHED THE N'LY LINE OF THE SW 1/4 OF SECTION 7, TOWNSHIP 4S, RANGE 10W, S.B.M., RANCHO LOS COYOTES, BETWEEN FOUND MONUMENTS 2 & 3 ESTABLISHED LINE ALSO BEING THE C/L OF CRESCENT AVE.
- Ⓢ ESTABLISHED THE E'LY LINE OF THE SW 1/4 OF SECTION 7, TOWNSHIP 4S, RANGE 10W, S.B.M., RANCHO LOS COYOTES, BETWEEN FOUND MONUMENT 3 & ESTABLISHMENT NOTE ⓫ ESTABLISHED THE C/L OF GILBERT ST. BETWEEN FOUND MONUMENTS 3 & 4
- Ⓣ ESTABLISHED THE S'LY LINE OF THE SW 1/4 OF SECTION 7, TOWNSHIP 4S, RANGE 10W, S.B.M., RANCHO LOS COYOTES, BETWEEN ESTABLISHMENT NOTES Ⓐ & 1

- Ⓛ ESTABLISHED THE C/L OF LINCOLN AVE BETWEEN FOUND MONUMENTS 1 & 4
- ⓫ ESTABLISHED THE N'LY LINE OF THE S'LY 1/2 OF THE SW 1/4 OF SECTION 7, TOWNSHIP 4S, RANGE 10W, S.B.M., RANCHO LOS COYOTES, BETWEEN ESTABLISHMENT NOTES Ⓔ & ⓫
- Ⓜ ESTABLISHED THE E'LY LINE OF THE W'LY 1/2 OF THE SW 1/4 OF SECTION 7, TOWNSHIP 4S, RANGE 10W, S.B.M., RANCHO LOS COYOTES, BETWEEN ESTABLISHMENT NOTES Ⓒ & Ⓜ
- Ⓝ ESTABLISHED THE C/L OF HARCOURT ST. PER R3 BETWEEN FOUND MONUMENT 7 & ESTABLISHMENT NOTE Ⓕ
- Ⓞ ESTABLISHED THE E'LY LINE OF THE WEST 16.58 ACRES, OF THE NW 1/4 OF THE SW 1/4 SECTION 7, TOWNSHIP 4S, RANGE 10W, S.B.M., RANCHO LOS COYOTES, HOLDING A LINE S'LY FROM ESTABLISHMENT NOTE Ⓔ PARALLEL WITH, & W'LY OF LINE ESTABLISHMENT ⓫
- Ⓟ ESTABLISHED DESCRIBED LINE PER R20, R21, R22, & R23 HOLDING RECORD ANGLES, DISTANCES, & CURVATURE INFORMATION PER R20, R21, R22, & R23 E'LY FROM ESTABLISHMENT NOTE Ⓒ BETWEEN ESTABLISHMENT NOTES ⓫ & 1
- Ⓠ EXCEPT AS NOTED ESTABLISHED THE N'LY LINE OF R19 HOLDING RECORD ANGLES, DISTANCES, & CURVATURE INFORMATION E'LY FROM ESTABLISHMENT NOTE Ⓓ BETWEEN ESTABLISHMENT NOTE Ⓓ & 1
- Ⓡ EXCEPT AS NOTED ESTABLISHED THE S'LY LINE OF R19 HOLDING RECORD ANGLES, DISTANCES, & CURVATURE INFORMATION W'LY FROM ESTABLISHMENT NOTE Ⓓ BETWEEN ESTABLISHMENT NOTE Ⓓ & Ⓡ
- Ⓢ ESTABLISHED THE SW CORNER OF THE NORTH 1/2 OF THE NE 1/4 OF THE SW 1/4 SECTION 7, TOWNSHIP 4S, RANGE 10W, S.B.M., RANCHO LOS COYOTES AT MIDPOINT BETWEEN ESTABLISHMENT NOTES Ⓝ & Ⓢ
- Ⓣ ESTABLISHED THE SE CORNER OF THE NORTH 1/2 OF THE NE 1/4 OF THE SW 1/4 SECTION 7, TOWNSHIP 4S, RANGE 10W, S.B.M., RANCHO LOS COYOTES AT MIDPOINT BETWEEN ESTABLISHMENT NOTE Ⓡ & FOUND MONUMENT 3
- Ⓤ ESTABLISHED THE S'LY LINE OF THE NORTH 1/2 OF THE NE 1/4 OF THE SW 1/4 OF SECTION 7, TOWNSHIP 4S, RANGE 10W, S.B.M., RANCHO LOS COYOTES BETWEEN ESTABLISHMENT NOTES Ⓢ & Ⓤ
- Ⓥ ESTABLISHED THE INTERSECTION OF CRESCENT AVE & HARCOURT ST. BY INTERSECTION HOLDING A LINE N'LY FROM FOUND MONUMENT 7 ALONG LINE ESTABLISHMENT Ⓡ & E'LY FROM FOUND MONUMENT 2 ALONG LINE ESTABLISHMENT Ⓡ
- Ⓦ ESTABLISHED THE E'LY RIGHT OF WAY OF MAGNOLIA AVE HOLDING RECORD DIMENSIONS PARALLEL WITH, PERPENDICULAR TO, & E'LY OF LINE ESTABLISHMENT ⓫ PER R4, R5, & R7.
- Ⓧ ESTABLISHED THE S'LY RIGHT OF WAY OF CRESCENT AVE HOLDING RECORD DIMENSIONS PARALLEL WITH, PERPENDICULAR TO, & S'LY OF LINE ESTABLISHMENT Ⓡ PER R3, P.M.B. 384/20, & TRACT 2451, M.M. 74/36–37 AS SHOWN
- Ⓨ ESTABLISHED THE W'LY RIGHT OF WAY OF GILBERT ST. HOLDING RECORD DIMENSIONS PARALLEL WITH, PERPENDICULAR TO, & W'LY OF LINE ESTABLISHMENT Ⓢ PER P.M.B. 202/14–15, R.S.B. 33/43, & R.S.B. 50/43–44.
- Ⓩ ESTABLISHED THE N'LY RIGHT OF WAY OF LINCOLN AVE HOLDING RECORD DIMENSIONS PARALLEL WITH, PERPENDICULAR TO, & N'LY OF LINE ESTABLISHMENT 1 PER P.M.B. 24/47, & R.S.B. 308/34,

NOTE: ADDITIONAL BOUNDARY WORK WAS NOT PERFORMED AS A PART OF THIS AS-BUILT SURVEY. THE BOUNDARY SHOWN WAS PROVIDED FROM A PREVIOUS SURVEY SIGNED ON FEB, 26, 2020 AS A PART OF A TOPOGRAPHIC BOUNDARY SURVEY

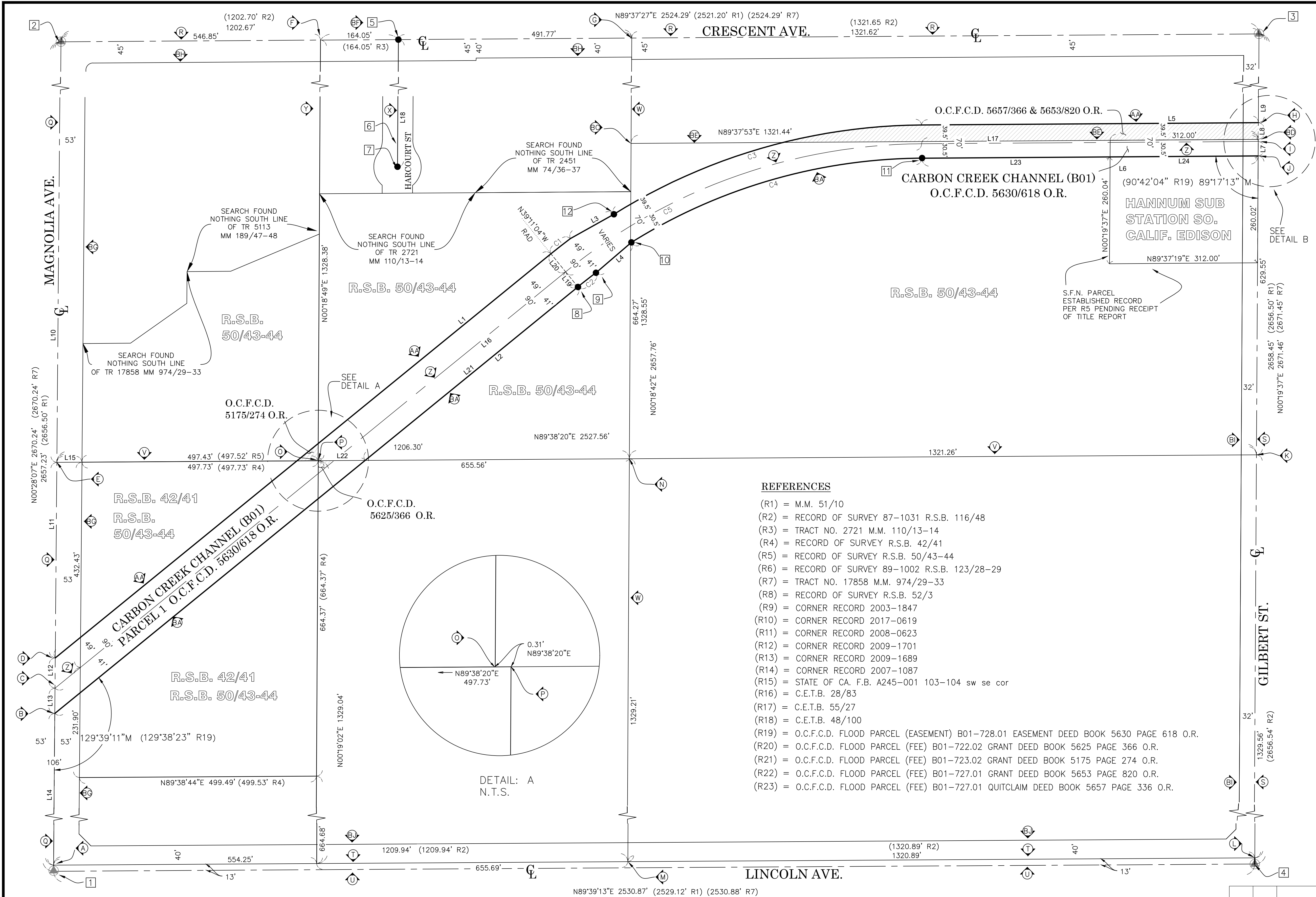
MONUMENT NOTES

- 1 FOUND 2" BRASS DISK STAMPED STATE OF CA. DIV. OF HIGHWAYS IN CITY OF ANAHEIM WELL MONUMENT, PER R10, R14, & R16, DN. 1.3' IN A.C. ACCEPTED AS C/L INTERSECTION OF MAGNOLIA AVE & LINCOLN AVE.
- 2 FOUND 2" BRASS DISK W/ PUNCH MARK IN CITY OF ANAHEIM WELL MONUMENT, PER R12, & R14, D.N. 1.5' IN A.C. ACCEPTED AS C/L INTERSECTION OF MAGNOLIA AVE & CRESCENT AVE ALSO BEING THE NW CORNER OF THE SW 1/4 OF SECTION 7 TOWNSHIP 4S, RANGE 10W, RANCHO LOS COYOTES.
- 3 FOUND 2" BRASS DISK W/ PUNCH MARK IN CITY OF ANAHEIM WELL MONUMENT, PER R11, & R17, D.N. 1.5' IN A.C. ACCEPTED AS C/L INTERSECTION OF GILBERT ST. & CRESCENT AVE. ALSO BEING THE NE CORNER OF THE SW 1/4 OF SECTION 7 TOWNSHIP 4S, RANGE 10W, RANCHO LOS COYOTES
- 4 FOUND 2" BRASS DISK STAMPED STATE OF CA. DIV. OF HIGHWAYS IN CITY OF ANAHEIM WELL MONUMENT, PER R12, & R14, DN. 1.3' IN A.C. ACCEPTED AS C/L INTERSECTION OF MAGNOLIA AVE & LINCOLN AVE.
- 5 FOUND PK NAIL WITH TAG STAMPED "CITY OF ANAHEIM" PER R9, FLUSH IN A.C. S00°18'49"W, 0.12' FROM C/L INTERSECTION CRESCENT AVE, & S. HARCOURT ST. ACCEPTED AS POINT ON C/L HARCOURT ST.
- 6 S.F.N. @ POINT ON C/L HARCOURT ST PER R10
- 7 FOUND GEAR SPIKE & WASHER STAMPED "C OF A SURVEY" PER R10, FLUSH IN A.C. ACCEPTED AS C/L RADIUS POINT S. HARCOURT ST.
- 8 FOUND 2" I.P. WITH BRASS TAG STAMPED "O.C.S." PER R6, FLUSH IN DIRT, N53°12'01"E 0.74' FROM B.C. OF S'LY LINE OF R19
- 9 FOUND 2" I.P. WITH BRASS TAG STAMPED "O.C.S." PER R6, FLUSH IN DIRT, N53°26'11"E 0.74' FROM E.C. OF S'LY LINE OF R19
- 10 FOUND 2" I.P. WITH BRASS TAG STAMPED "O.C.S." PER R6, FLUSH IN DIRT, N45°53'11"E 0.80' FROM B.C. OF S'LY LINE OF R19
- 11 FOUND 2" I.P. WITH BRASS TAG STAMPED "O.C.S." PER R6, FLUSH IN DIRT, N70°33'57"E 0.70' FROM B.C. OF S'LY LINE OF R19
- 12 FOUND 2" I.P. WITH BRASS TAG STAMPED "O.C.S." PER R6, FLUSH IN DIRT, N62°58'21"E 0.90' FROM E.C. OF N'LY LINE OF R19

REFERENCES

- (R1) = M.M. 51/10
(R2) = RECORD OF SURVEY 87–1031 R.S.B. 116/48
(R3) = TRACT NO. 2721 M.M. 110/13–14
(R4) = RECORD OF SURVEY R.S.B. 42/41
(R5) = RECORD OF SURVEY R.S.B. 50/43–44
(R6) = RECORD OF SURVEY 89–1002 R.S.B. 123/28–29
(R7) = TRACT NO. 17858 M.M. 974/29–33
(R8) = RECORD OF SURVEY R.S.B. 52/3
(R9) = CORNER RECORD 2003–1847
(R10) = CORNER RECORD 2017–0619
(R11) = CORNER RECORD 2008–0623
(R12) = CORNER RECORD 2009–1701
(R13) = CORNER RECORD 2009–1689
(R14) = CORNER RECORD 2007–1087
(R15) = STATE OF CA. F.B. A245–001 103–104 sw se cor
(R16) = C.E.T.B. 28/83
(R17) = C.E.T.B. 55/27
(R18) = C.E.T.B. 48/100
(R19) = O.C.F.C.D. FLOOD PARCEL (EASEMENT) B01–728.01 EASEMENT DEED BOOK 5630 PAGE 618 O.R.
(R20) = O.C.F.C.D. FLOOD PARCEL (FEE) B01–722.02 GRANT DEED BOOK 5625 PAGE 366 O.R.
(R21) = O.C.F.C.D. FLOOD PARCEL (FEE) B01–723.02 GRANT DEED BOOK 5175 PAGE 274 O.R.
(R22) = O.C.F.C.D. FLOOD PARCEL (FEE) B01–727.01 GRANT DEED BOOK 5653 PAGE 820 O.R.
(R23) = O.C.F.C.D. FLOOD PARCEL (FEE) B01–727.01 QUITCLAIM DEED BOOK 5657 PAGE 336 O.R.

				COUNTY OF ORANGE OC PUBLIC WORKS/ENGINEERING SERVICES OC SURVEY/FIELD SERVICES/BOUNDARY ANALYSIS & MAPPING			
				CARBON CANYON CHANNEL (B01) CHANNEL MAINTAINANCE PROJECT			
				BOUNDARY			
				PROJECT LIMITS: STATION 312+43.64' TO STATION 340+92.06' UPSTREAM MAGNOLIA AVE. TO N. GILBERT ST.			
MARK	DATE	ITEM	DATE OF SURVEY:OCTOBER 2019		BY:JOHNS & PARTY		SHEET NO. 2 of 6
			TOPOGRAPHIC MAPPING		BY:R. BELTRAN		
			OFFICE CHECK		BY:M. KUBISTY, PLS		
			FIELD CHECK		BY:JOHNS & PARTY		
			SCALE:1"=100'		W.O. #EE21210		
		REVISIONS		FILE:CARBON CREEK_CHANNEL_BOUNDARY_2020.DWG			

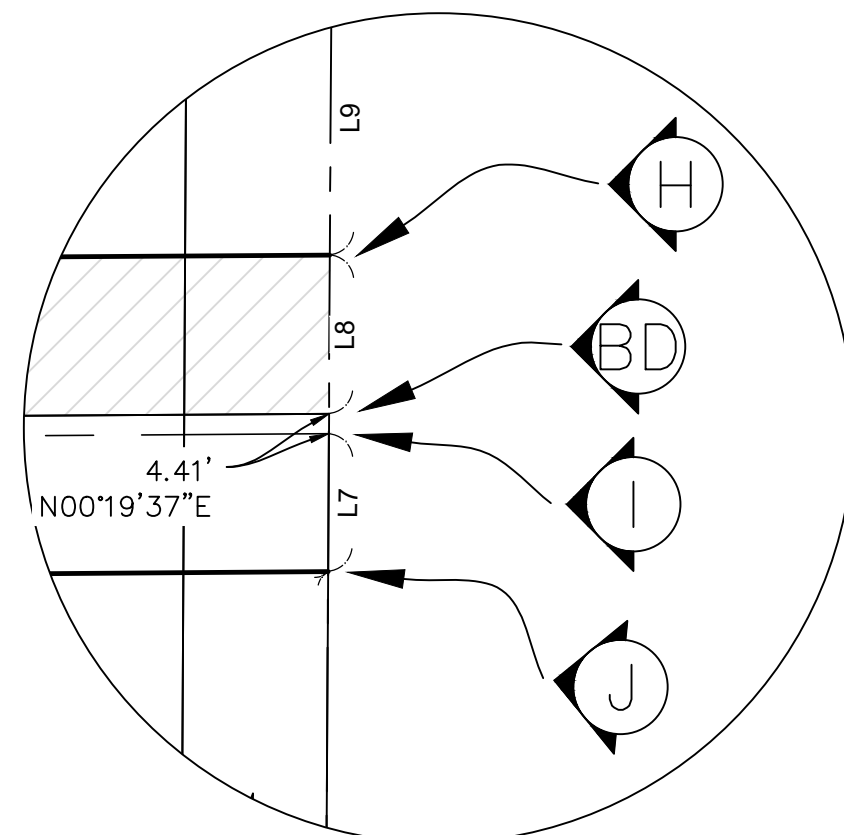


REFERENCES

- (R1) = M.M. 51/10
(R2) = RECORD OF SURVEY 87-1031 R.S.B. 116/48
(R3) = TRACT NO. 2721 M.M. 110/13-14
(R4) = RECORD OF SURVEY R.S.B. 42/41
(R5) = RECORD OF SURVEY R.S.B. 50/43-44
(R6) = RECORD OF SURVEY 89-1002 R.S.B. 123/28-29
(R7) = TRACT NO. 17858 M.M. 974/29-33
(R8) = RECORD OF SURVEY R.S.B. 52/3
(R9) = CORNER RECORD 2003-1847
(R10) = CORNER RECORD 2017-0619
(R11) = CORNER RECORD 2008-0623
(R12) = CORNER RECORD 2009-1701
(R13) = CORNER RECORD 2009-1689
(R14) = CORNER RECORD 2007-1087
(R15) = STATE OF CA. F.B. A245-001 103-104 sw se cor
(R16) = C.E.T.B. 28/83
(R17) = C.E.T.B. 55/27
(R18) = C.E.T.B. 48/100
(R19) = O.C.F.C.D. FLOOD PARCEL (EASEMENT) B01-728.01 EASEMENT DEED BOOK 5630 PAGE 618 O.R.
(R20) = O.C.F.C.D. FLOOD PARCEL (FEE) B01-722.02 GRANT DEED BOOK 5625 PAGE 366 O.R.
(R21) = O.C.F.C.D. FLOOD PARCEL (FEE) B01-723.02 GRANT DEED BOOK 5175 PAGE 274 O.R.
(R22) = O.C.F.C.D. FLOOD PARCEL (FEE) B01-727.01 GRANT DEED BOOK 5653 PAGE 820 O.R.
(R23) = O.C.F.C.D. FLOOD PARCEL (FEE) B01-727.01 QUITCLAIM DEED BOOK 5657 PAGE 336 O.R.

CURVE TABLE						
CURVE #	LENGTH	RADIUS	DELTA	RECORD LENGTH	RECORD RADIUS	RECORD DELTA
C1	52.04	1248.98	002°23'14"	52.04 (R19)	1249.00 (R19)	2°23'14" (R19)
C2	48.29	1158.98	002°23'14"	800.11 (R19)	1159.00 (R19)	2°23'14" (R19)
C3	684.39	1239.48	031°38'11"	684.40 (R19)	1239.50 (R19)	31°38'11" (R19)
C4	645.74	1169.48	031°38'11"	645.75 (R19)	1169.50 (R19)	31°38'11" (R19)
C5	812.59	1200.00	038°47'54"	812.59 (R22)	1200.00 (R22)	38°47'54" (R19)

LINE TABLE			
LINE #	BEARING	MEASURED DISTANCE	RECORD DISTANCE
L1	N50°48'56"E	1347.33	1347.41 (R19)
L2	N50°48'56"E	1421.95	1421.97 (R19)
L3	N60°49'19"E	104.09	104.09 (R19)
L4	N49°25'02"E	97.56	97.56 (R19)
L5	N89°36'50"E	709.77	709.08 (R19)
L6	N89°36'50"E	708.88	708.20 (R19)
L7	N00°19'37"E	30.49	
L8	N00°18'37"E	35.10	
L9	N00°19'38"E	629.34	
L10	N00°28'07"E	1328.29	1328.29 (R7)
L11	N00°28'07"E	411.94	
L12	N00°28'06"E	63.65	
L13	N00°28'07"E	53.25	
L14	N00°28'07"E	800.10	800.11 (R19)
L15	N89°38'20"E	53.01	
L16	N50°48'59"E	1388.00	1388.00 (R22)
L17	N89°36'53"E	709.21	708.58 (R22)
L18	S00°18'49"W	711.15	711.00 (R22)
L19	S39°11'04"E	40.98	
L20	S39°11'04"E	49.03	
L21	N50°48'56"E	578.48	



DETAIL: B
N.T.S.

NOTE: ADDITIONAL BOUNDARY WORK WAS NOT PERFORMED AS A PART OF THIS AS-BUILT SURVEY. THE BOUNDARY SHOWN WAS PROVIDED FROM A PREVIOUS SURVEY SIGNED ON FEB. 26, 2020 AS A PART OF A TOPOGRAPHIC BOUNDARY SURVEY

			COUNTY OF ORANGE OC PUBLIC WORKS/ENGINEERING SERVICES OC SURVEY/FIELD SERVICES/BOUNDARY ANALYSIS & MAPPING			
			CARBON CREEK CHANNEL (B01) CHANNEL MAINTAINANCE PROJECT			
			BOUNDARY			
			PROJECT LIMITS: STATION 312+43.64' TO STATION 340+92.06' UPSTREAM MAGNOLIA AVE. TO N. GILBERT ST.			
			DATE OF SURVEY: OCTOBER 2019		BY: JOHNS & PARTY	SHEET NO. 3 of 6
			TOPOGRAPHIC MAPPING		BY: R. BELTRAN	
			OFFICE CHECK		BY: M. KUBISTY, PLS	
			FIELD CHECK		BY: JOHNS & PARTY	
			SCALE: 1"=100'		W.O. #EF21210	
			FILE: CARBON_CREEK_CHANNEL_BOUNDARY_2020.DWG			
MARK	DATE	ITEM	REVISIONS			

LEGEND

SYMBOL		AREA PATTERN KEY	
[Symbol]	Control Box Irrigation	[Pattern]	Concrete
[Symbol]	Control Point	[Pattern]	Dirt
[Symbol]	Manhole Electrical	[Pattern]	Rip Rap
[Symbol]	Pipe Inlet/Outlet		
[Symbol]	Pull Box Electrical		
[Symbol]	Sign Post		
[Symbol]	Tree		
[Symbol]	Valve Irrigation		
[Symbol]	Valve Water		

ABBREVIATION		LINE PATTERN KEY	
AC	Asphalt Concrete	[Pattern]	Centerline
CONC	Concrete	[Pattern]	Edge of Concrete
CP	Control Point	[Pattern]	Edge of Asphalt Pavement
EL	Elevation	[Pattern]	Fence Chainlink
ENC	Encroachment	[Pattern]	Flowline
FL	Flowline	[Pattern]	Grade Line
FD	Found	[Pattern]	Hinge Point
INV	Invert	[Pattern]	Right of Way
PED	Pedestrian		
PP	Power Pole		
TC	Top of Curb		

SEE SHEET 5

APN 071-100-55

SAVANAH
HIGH SCHOOL

DAD MILLER
GOLF COURSE

APN 071-100-61

APN 071-100-60

CP # 110
SET 1" IP & TAG
STAMPED STAMPED
OCS FLUSH IN GRASS
N: 2251975.36'
E: 6037855.58'
EL: 94.98'

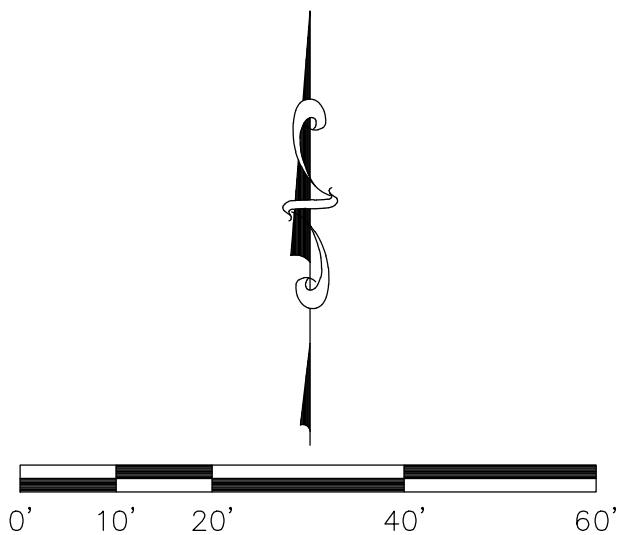
CP # 216
FD 1 3/4" ALUMINUM
CAP STAMPED "OCS"
IN GRASS 0.1'
N: 2251826.26'
E: 6037836.69'
EL: 95.23'

CP # 101
SET BR. PIN &
WASHER STAMPED
OCS FLUSH ON
CONC.
N: 2251773.07'
E: 6037613.19'
EL: 93.69'

STA 311+82.32 AT INT
OF MAGNOLIA AVE C/L
SEE SHEET 1 FOR BASIS
OF STATIONING

CONC. PED.
BRIDGE

U.S. Survey
Foot
OC Public Works
OC Survey/Field Services
Boundary Analysis & Mapping



SCALE: 1" = 20'
CONTOUR INTERVAL 1'

COUNTY OF ORANGE
OC PUBLIC WORKS
OC SURVEY/FIELD SERVICES/BOUNDARY ANALYSIS & MAPPING
CARBON CREEK CHANNEL (B01)
AS BUILT

TOPOGRAPHIC MAP				SHEET NO.
PROJECT LIMITS: FROM STA. 313+49.18' TO STA. 327+75.20' UPSTREAM MAGNOLIA AVE TO N. GILBERT ST.				
DATE OF SURVEY: 01/14/2021	BY: J. JOHNS & PARTY		4	of
MAPPING	BY: I. ISLAS			
OFFICE CHECK	BY: J. JESOM, PLS		6	
FIELD CHECK	BY: J. JOHNS & PARTY			
SCALE: 1"=20'	W.O. #EF21210	FILE #1920PW-IN0012		
FILE: CARBON CREEK CHANNEL AS BUILT_TOPO_2021.DWG				

LEGEND

SYMBOL		AREA PATTERN KEY	
	Control Box Irrigation		Concrete
	Control Point		Dirt
	Manhole Electrical		Rip Rap
	Pipe Inlet/Outlet		
	Pull Box Electrical		
	Sign Post		
	Tree		
	Valve Irrigation		
	Valve Water		

ABBREVIATION		LINE PATTERN KEY	
AC	Asphalt Concrete		Centerline
CONC	Concrete		Edge of Concrete
CP	Control Point		Edge of Asphalt Pavement
EL	Elevation		Fence Chainlink
ENC	Encroachment		Flowline
FL	Flowline		Grade Line
FD	Found		Hinge Point
INV	Invert		Right of Way
PED	Pedestrian		
PP	Power Pole		
TC	Top of Curb		

SEE SHEET 6

DAD MILLER
GOLF COURSE

DAD MILLER
GOLF COURSE

APN 071-411-51

APN 071-411-52

APN 071-491-13

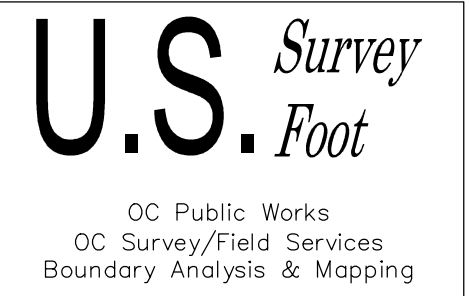
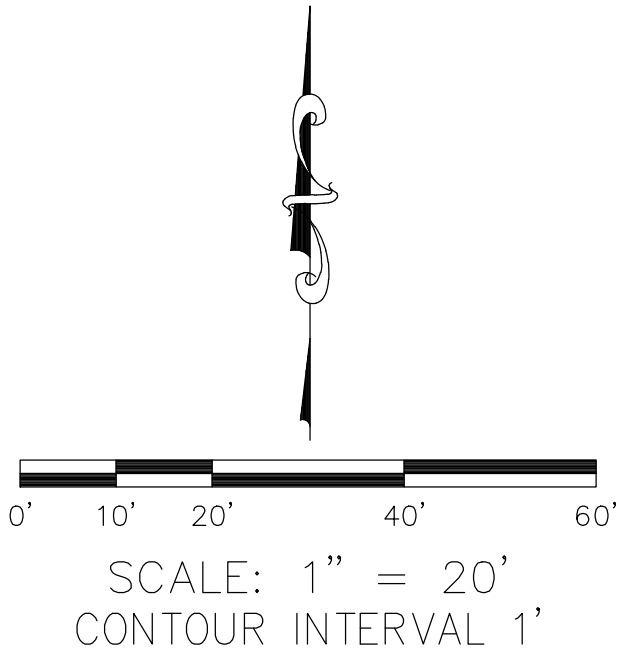
CP# 106
SET 1" IP & TAG
STAMPED OCS, DN.
0.1' IN GRASS
N: 2252289.92'
E: 6038204.06'
EL: 97.13'

CP# 108
SET 1" IP & TAG
STAMPED OCS, DN.
0.2' IN GRASS
N: 2252215.12'
E: 6038283.62'
EL: 95.22'

CP# 107
SET 1" IP & TAG
STAMPED STAMPED
OCS FLUSH IN GRASS
N: 2252168.31'
E: 6038065.90'
EL: 99.18'

CP# 217
1" ALUMINUM
CAP STAMPED
OCS, FLUSH
IN GRASS
N: 2252141.02'
E: 6038019.12'
EL: 96.84'

PIPE OUTLET
INV EL = 85.76'
18" Ø PVC



SEE SHEET 4

			COUNTY OF ORANGE OC PUBLIC WORKS OC SURVEY/FIELD SERVICES/BOUNDARY ANALYSIS & MAPPING			
			CARBON CREEK CHANNEL (B01) AS BUILT			
			TOPOGRAPHIC MAP			
			PROJECT LIMITS: FROM STA. 313+49.18' TO STA. 327+75.20' UPSTREAM MAGNOLIA AVE. TO N. GILBERT ST.			
			DATE OF SURVEY: 01/14/2021		BY: J. JOHNS & PARTY	
			MAPPING		BY: J. ISLAS	
			OFFICE CHECK		BY: J. JESOM, PLS	
			FIELD CHECK		BY: J. JOHNS & PARTY	
			SCALE: 1"=20'		FILE #1920PW-IN0012	
			W.O. #EF21210		FILE: CARBON CREEK CHANNEL AS BUILT_TOPO_2021.DWG	
MARK	DATE	ITEM	REVISIONS			

LEGEND

SYMBOL

- Control Box Irrigation
- Control Point
- Manhole Electrical
- Pipe Inlet/Outlet
- Pull Box Electrical
- Sign Post
- Tree
- Valve Irrigation
- Valve Water

AREA PATTERN KEY

- Concrete
- Dirt
- Rip Rap

ABBREVIATION

- AC Asphalt Concrete
- CONC Concrete
- CP Control Point
- EL Elevation
- ENC Encroachment
- FL Flowline
- FD Found
- INV Invert
- PED Pedestrian
- PP Power Pole
- TC Top of Curb

LINE PATTERN KEY

- Centerline
- Edge of Concrete
- Edge of Asphalt Pavement
- Fence Chainlink
- Flowline
- Grade Line
- Hinge Point
- Right of Way

DAD MILLER
GOLF COURSE

DAD MILLER
GOLF COURSE

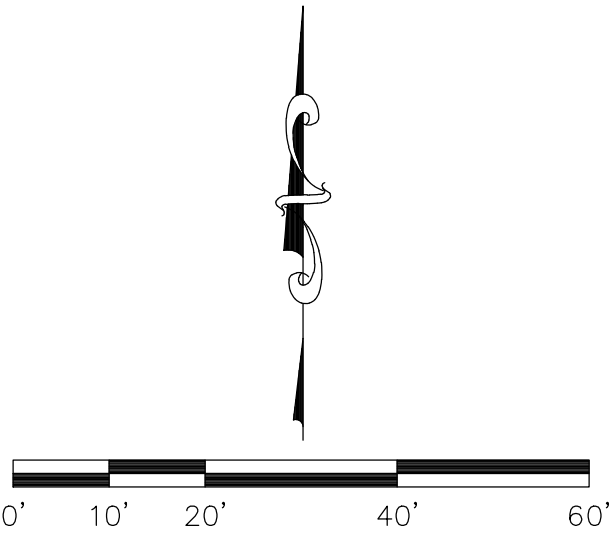
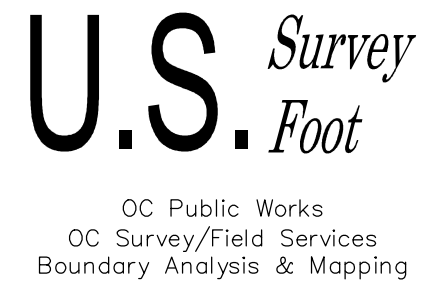
APN 071-411-51

DAD MILLER
GOLF COURSE

APN 071-090-16

SEE SHEET 5

DAD MILLER
GOLF COURSE



SCALE: 1" = 20'
CONTOUR INTERVAL 1'

COUNTY OF ORANGE
OC PUBLIC WORKS
OC SURVEY/FIELD SERVICES/BOUNDARY ANALYSIS & MAPPING

CARBON CREEK CHANNEL (B01)
AS BUILT

TOPOGRAPHIC MAP

PROJECT LIMITS: FROM STA. 313+49.18' TO STA. 327+75.20' UPSTREAM MAGNOLIA AVE.
TO N. GILBERT ST.

DATE OF SURVEY: 01/14/2021 BY: J. JOHNS & PARTY

MAPPING BY: I. ISLAS

OFFICE CHECK BY: J. JESOM, PLS

FIELD CHECK BY: J. JOHNS & PARTY

SCALE: 1"=20' W.O. #EF21210 FILE #1920PW-IN0012

FILE: CARBON CREEK CHANNEL AS BUILT_TOPO_2021.DWG

SHEET NO.

6

of

6

REVISIONS