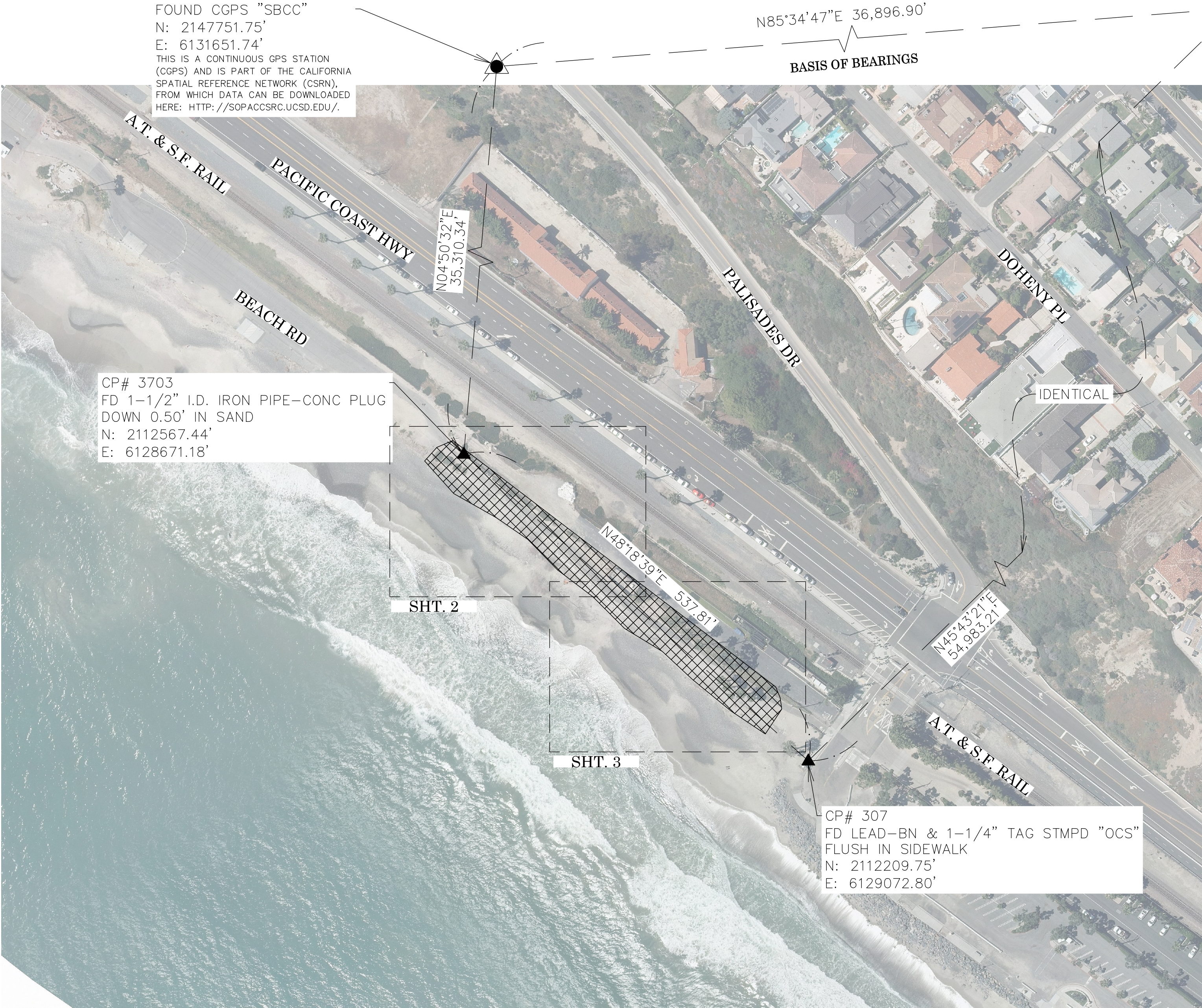
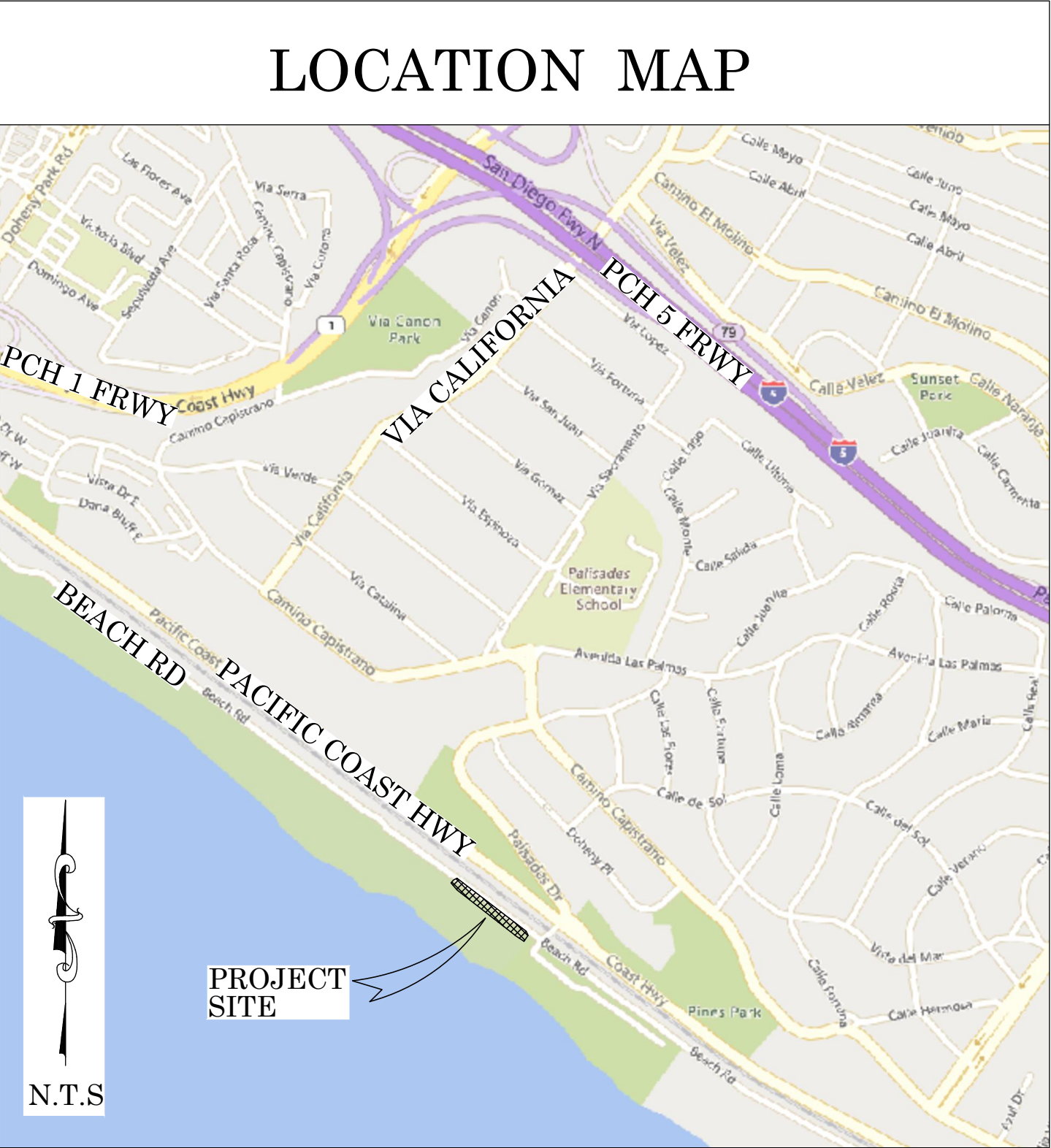




OC PUBLIC WORKS DEPARTMENT
JAMES TREADAWAY, DIRECTOR OF PUBLIC WORKS
KEVIN HILLS, COUNTY SURVEYOR
CAPISTRANO BEACH COASTAL REPAIR



PHASE 1 AS-BUILT SURVEY



FOUND CGPS "P471"
N: 2150595.47'
E: 6168438.89'
THIS IS A CONTINUOUS GPS STATION
(CGPS) AND IS PART OF THE CALIFORNIA
SPATIAL REFERENCE NETWORK (CSRN),
FROM WHICH DATA CAN BE DOWNLOADED
HERE: [HTTP://SOPACCSRC.UCSB.EDU/](http://SOPACCSRC.UCSB.EDU/).

BASIS OF BEARINGS

THE BASIS OF BEARINGS FOR THIS SURVEY IS BASED ON THE CALIFORNIA COORDINATE SYSTEM (CCS83), ZONE VI, NAD 83, OCS (2017.50) EPOCH ADJUSTMENT, AS DETERMINED LOCALLY BY A LINE BETWEEN CONTINUOUS GLOBAL POSITIONING STATIONS CGPS STATIONS (SBCC) AND (P471) BEING NORTH 85°34'47" EAST AS DERIVED FROM THE COORDINATES PUBLISHED BY THE CALIFORNIA SPATIAL REFERENCE CENTER (CSRC) ALONG WITH DATA SHEETS ON FILE IN THE OFFICE OF THE ORANGE COUNTY SURVEYOR.

HORIZONTAL DATUM

COORDINATES SHOWN ARE BASED ON THE CALIFORNIA COORDINATE SYSTEM (CCS83), ZONE VI, NAD 83, OCS (2017.50) EPOCH ADJUSTMENT.

ALL DISTANCES SHOWN ARE GRID, UNLESS OTHERWISE NOTED. TO OBTAIN GROUND DISTANCES MULTIPLY GRID BY A COMBINED FACTOR OF 1.00003920.

THIS COMBINATION FACTOR WAS HELD AT: CP# 307
N: 2112209.75' E: 6129072.80' EL: 15.74'

ALL DISTANCES ARE BASED ON THE U.S. SURVEY FOOT.

VERTICAL DATUM

MEAN LOWER-LOW WATER (MLLW)

ELEVATIONS SHOWN ARE DERIVED BY A CONVERSION FROM NGVD29 TO MLLW. THAT CONVERSION BEING 2.52' FROM BM 3B-50-68 TO TIDAL STATION 9410580.

THE COUNTY WIDE VERTICAL DIFFERENCE AVERAGE OF 2.34' BETWEEN NGVD29 AND NAVD88 ALONG WITH THE NAVD88 ADJUSTMENT OF 0.18' FROM TIDAL STATION 9410580, EPOCH 1983-2001 WAS USED TO DETERMINE THE CONVERSION.

O.C.S. BM. 3B-50-68 ELEV. = 14.707' NGVD29 YEAR LEVELED: 1989

ADJUSTMENT= 14.707'+2.52'=17.227' MLLW

DESCRIPTION: FOUND 3-3/4" OCS ALUMINUM BENCHMARK DISK STAMPED "3B-50-68", SET IN THE SOUTHERLY END OF A CONCRETE HEADWALL FOR A 24" CULVERT. MONUMENT IS LOCATED ALONG THE SOUTHWESTERLY SIDE OF PACIFIC COAST HIGHWAY, 0.55 MILES SOUTHWESTERLY OF THE CENTERLINE OF DEL OBISPO, 0.05 MILES NORTHERLY ALONG PCH FROM A PEDESTRIAN BRIDGE AND 40.4' WESTERLY OF THE CENTERLINE OF PCH. MONUMENT IS SET LEVEL WITH THE TOP OF THE WALL.

NOTES

THE SURVEY INFORMATION SHOWN HEREON IS TO BE USED FOR TOPOGRAPHIC RELATIONSHIPS ONLY AND IS NOT INTENDED FOR LAND ACQUISITION OR BOUNDARY PURPOSES.

SHEET INDEX

SHEET NO.	DESCRIPTION
SHEET 1	TITLE SHEET
SHEETS 2-3	TOPOGRAPHIC MAP

PURPOSE OF SURVEY

THE PURPOSE OF THE SURVEY IS TO PROVIDE AN AS-BUILT SURVEY SHOWING THE BEACH SURFACE POST-CONSTRUCTION OF THE CAPO BEACH STORM DRAIN EMERGENCY REPAIR EMERGENCY COASTAL PERMIT G-5-19-0036, DATED AUGUST 12, 2019.

SENIOR LAND SURVEYOR'S CERTIFICATE:

THIS MAP CORRECTLY REPRESENTS A SURVEY MADE BY ME OR UNDER MY DIRECTION IN CONFORMANCE WITH REQUIREMENTS OF THE PROFESSIONAL LAND SURVEYOR'S ACT; THIS 22 DAY OF NOVEMBER, 2021.

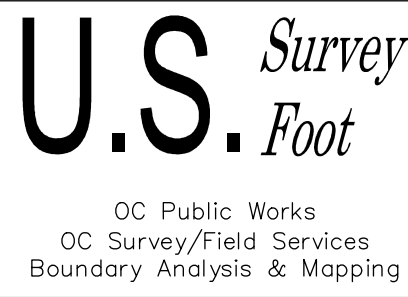
ELLIOTT MEDINA, PLS. SENIOR LAND SURVEYOR



DEPUTY COUNTY SURVEYOR'S STATEMENT:

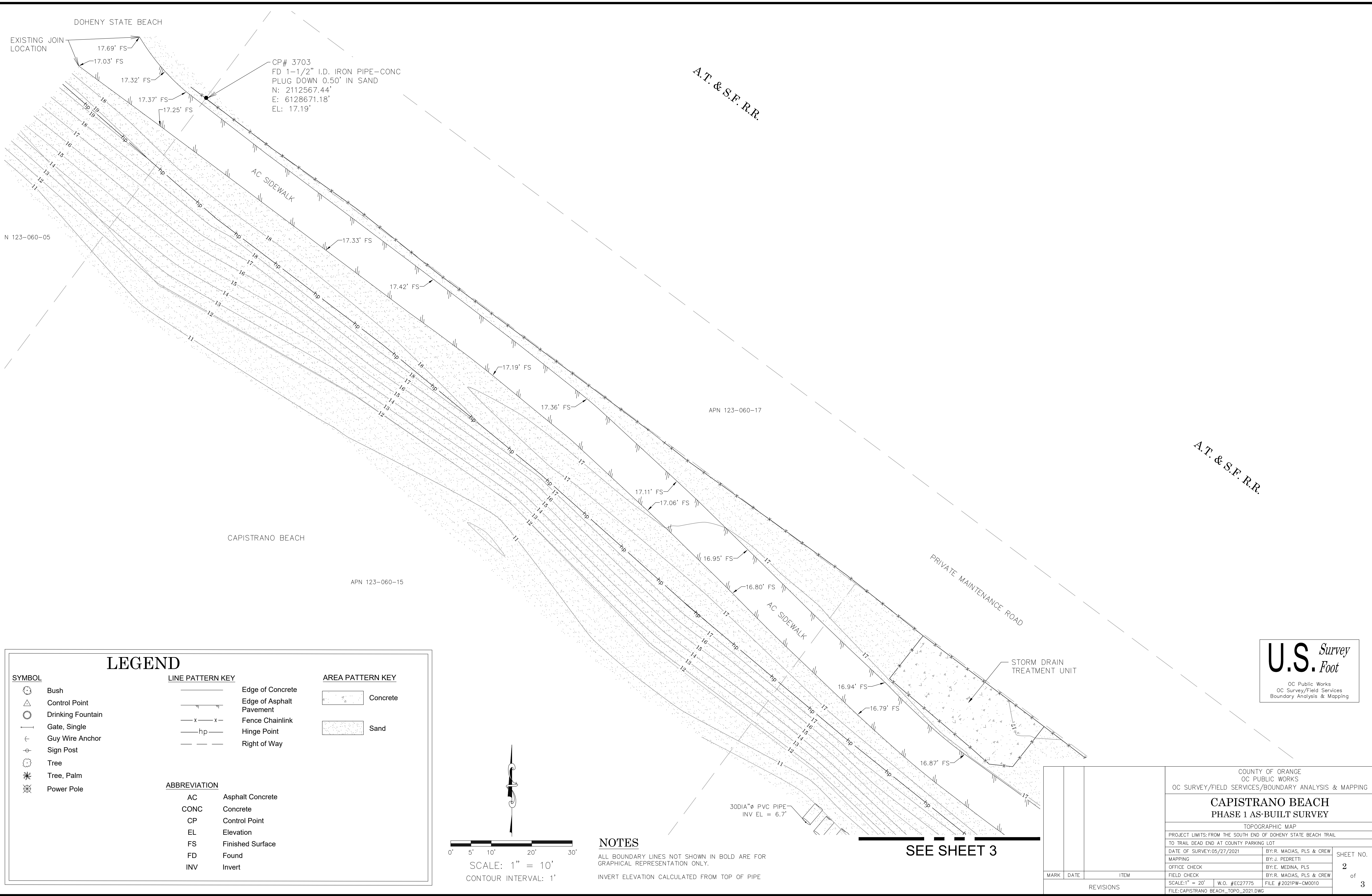
THIS MAP HAS BEEN EXAMINED IN ACCORDANCE WITH THE PROFESSIONAL LAND SURVEYOR'S ACT; THIS 22 DAY OF NOVEMBER, 2021.

WADE WEAVER, PLS. DEPUTY COUNTY SURVEYOR



TOPOGRAPHIC MAPPING PROJECT

COUNTY OF ORANGE OC PUBLIC WORKS OC SURVEY/FIELD SERVICES/BOUNDARY ANALYSIS & MAPPING			
CAPISTRANO BEACH PHASE 1 AS-BUILT SURVEY			
TITLE SHEET			
PROJECT LIMITS: FROM THE SOUTH END OF DOHENY STATE BEACH TRAIL			
TO TRAIL DEAD END AT COUNTY PARKING LOT			
DATE OF SURVEY: 05/27/2021		BY: R. MACIAS, PLS & CREW	
MAPPING		BY: J. PEDRETTI	
OFFICE CHECK		BY: E. MEDINA, PLS	
FIELD CHECK		BY: R. MACIAS, PLS & CREW	
SCALE: N.T.S.		W.O. #EC27775	FILE #2021PW-CM0010
FILE: CAPISTRANO BEACH_TOPO_2021.DWG			
MARK	DATE	ITEM	SHEET NO.
REVISIONS			1 of 3



LEGEND

SYMBOL

- Bush
- Control Point
- Drinking Fountain
- Gate, Single
- Guy Wire Anchor
- Sign Post
- Tree
- Tree, Palm
- Power Pole

LINE PATTERN KEY

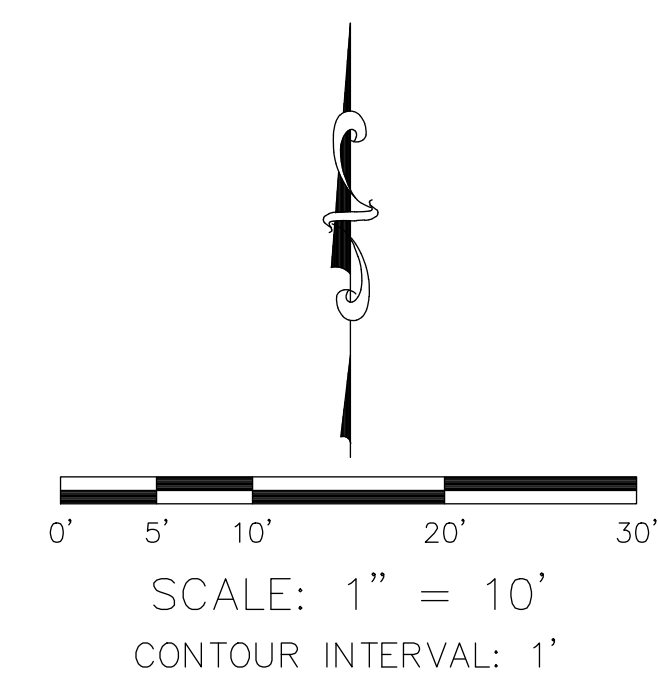
- Edge of Concrete
- Edge of Asphalt Pavement
- Fence Chainlink
- Hinge Point
- Right of Way

AREA PATTERN KEY

- Concrete
- Sand

ABBREVIATION

- AC Asphalt Concrete
- CONC Concrete
- CP Control Point
- EL Elevation
- FS Finished Surface
- FD Found
- INV Invert

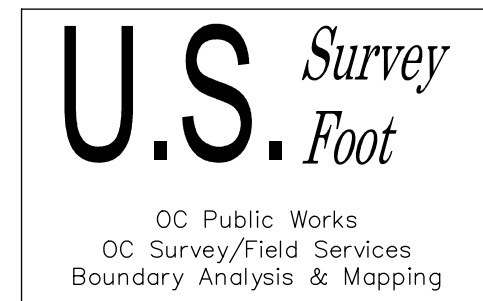


NOTES

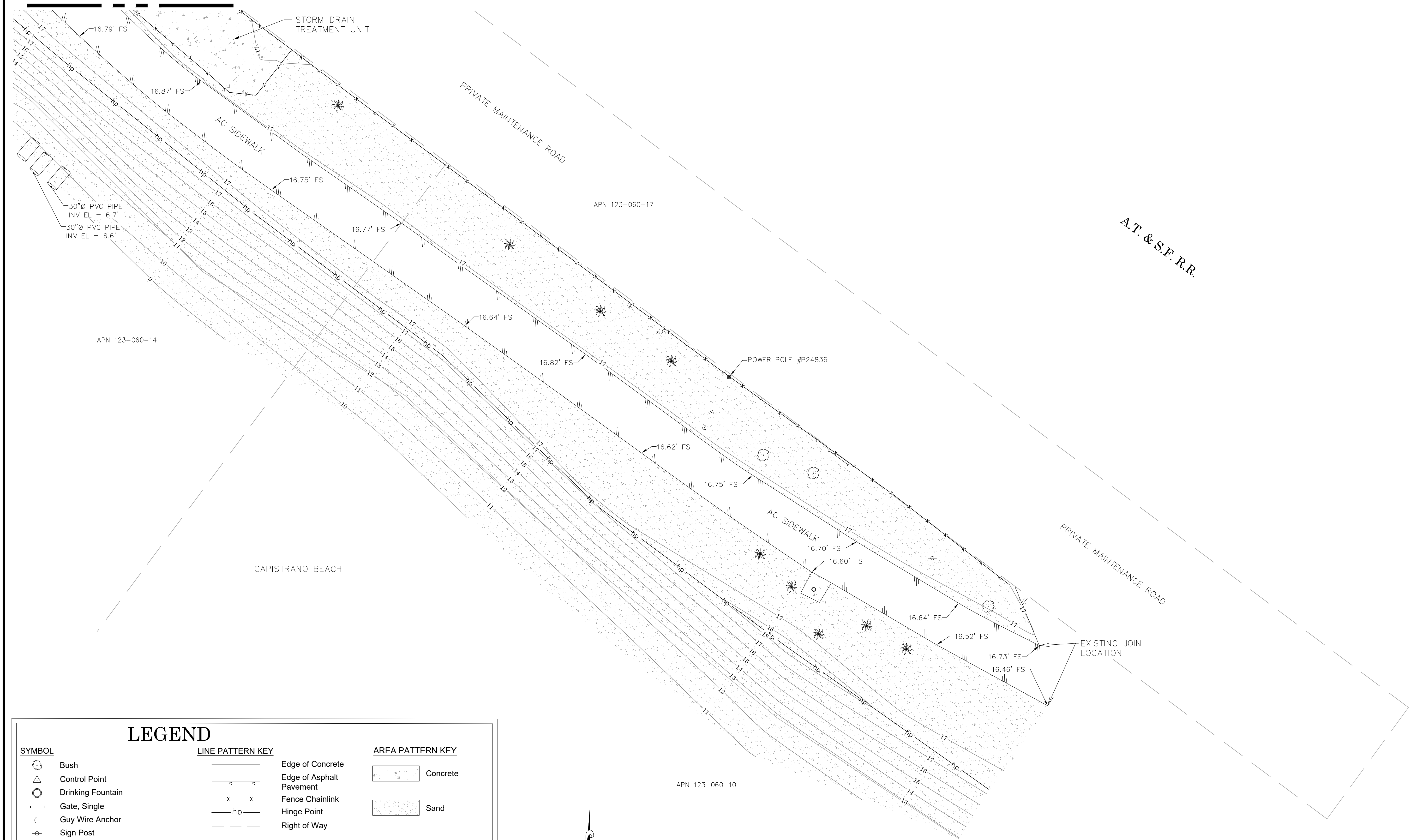
ALL BOUNDARY LINES NOT SHOWN IN BOLD ARE FOR GRAPHICAL REPRESENTATION ONLY.

INVERT ELEVATION CALCULATED FROM TOP OF PIPE

			COUNTY OF ORANGE OC PUBLIC WORKS OC SURVEY/FIELD SERVICES/BOUNDARY ANALYSIS & MAPPING	
			CAPISTRANO BEACH PHASE 1 AS-BUILT SURVEY	
			TOPOGRAPHIC MAP	
			PROJECT LIMITS: FROM THE SOUTH END OF DOHENY STATE BEACH TRAIL TO TRAIL DEAD END AT COUNTY PARKING LOT	
			DATE OF SURVEY: 05/27/2021	BY: R. MACIAS, PLS & CREW
			MAPPING	BY: J. PEDRETTI
			OFFICE CHECK	BY: E. MEDINA, PLS
			FIELD CHECK	BY: R. MACIAS, PLS & CREW
			SCALE: 1" = 20'	W.O. #EC27775
			FILE #2021PW-CM0010	
			FILE: CAPISTRANO_BEACH_TOPO_2021.DWG	
MARK	DATE	ITEM	REVISIONS	



SEE SHEET 2



SYMBOL

- Bush
- Control Point
- Drinking Fountain
- Gate, Single
- Guy Wire Anchor
- Sign Post
- Tree
- Tree, Palm
- Power Pole

LINE PATTERN KEY

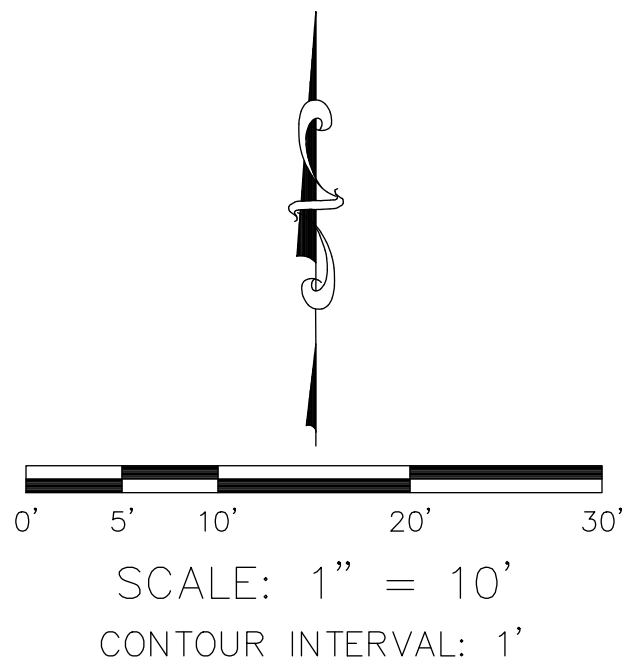
- Edge of Concrete
- Edge of Asphalt Pavement
- Fence Chainlink
- Hinge Point
- Right of Way

AREA PATTERN KEY

- Concrete
- Sand

ABBREVIATION

- AC Asphalt Concrete
- CONC Concrete
- CP Control Point
- EL Elevation
- FS Finished Surface
- FD Found
- INV Invert



NOTES

ALL BOUNDARY LINES NOT SHOWN IN BOLD ARE FOR GRAPHICAL REPRESENTATION ONLY.
INVERT ELEVATION CALCULATED FROM TOP OF PIPE

CP# 307
FD LEAD-BN & 1-1/4" TAG STMPD
"OCS" FLUSH IN SIDEWALK
N: 2112209.75'
E: 6129072.80'
EL: 15.74'

			COUNTY OF ORANGE OC PUBLIC WORKS OC SURVEY/FIELD SERVICES/BOUNDARY ANALYSIS & MAPPING			
			CAPISTRANO BEACH PHASE 1 AS-BUILT SURVEY			
			TOPOGRAPHIC MAP			
			PROJECT LIMITS: FROM THE SOUTH END OF DOHENY STATE BEACH TRAIL TO TRAIL DEAD END AT COUNTY PARKING LOT			
			DATE OF SURVEY: 05/27/2021		BY: R. MACIAS, PLS & CREW	SHEET NO. 3 of 3
			MAPPING		BY: J. PEDRETTI	
			OFFICE CHECK		BY: E. MEDINA, PLS	
			FIELD CHECK		BY: R. MACIAS, PLS & CREW	
MARK	DATE	ITEM	SCALE: 1" = 20'		W.O. #EC27775	FILE # 2021PW-CM0010
REVISIONS			FILE: CAPISTRANO BEACH_TOPO_2021.DWG			