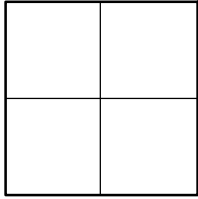


CORNER RECORD

Agency Index _____

Document Number CR 2021-3510City of UNINCORPORATED TERRITORYCounty of ORANGE, CaliforniaBrief Legal Description AT THE APPARENT INTERSECTION OF BROADWAY AVE & GILBERT ST**CORNER TYPE**

- ☐ Government Corner ☐ Control
☐ Meander ☐ Property
☐ Rancho ☒ Other

Date of Survey 12-11-2021**COORDINATES (Optional)**

N. _____ E. _____

Elevation _____

Units _____ Metric ☐ U.S. Survey Foot ☒

Horizontal Datum _____

Zone _____ Epoch Date _____

Vertical Datum _____

☐ Complies with Public Resources Code §§8801-8819☐ Complies with Public Resources Code §§8890-8902PLS Act Ref: ☐ 8765(d)☒ 8771☐ 8773☐ Other: _____Corner/ ☐ Left as found☐ Established☐ Rebuilt☐ Pre-ConstructionMonument: ☐ Found and tagged☒ Reestablished☐ Referenced☒ Post-Construction

Narrative of corner identified and monument as found, set, reset, replaced, or removed:

☒ See sheet #2 for description (s):

THE PURPOSE OF THIS RECORD IS TO DOCUMENT THE PERPETUATION OF FOUND MONUMENT(S) PURSUANT TO THE PLS ACT SECTION 8771. NO CLAIM IS MADE AS TO THE RELATIONSHIP OF THE POINTS SHOWN HEREON TO TRUE BOUNDARY LOCATIONS. RIGHT OF WAY, PARCEL, OR LOT LINES, OR ANY OTHER DATA RELATED TO DELINEATION OF PROPERTY RIGHTS ARE DISPLAYED FOR GRAPHICAL REPRESENTATION ONLY.

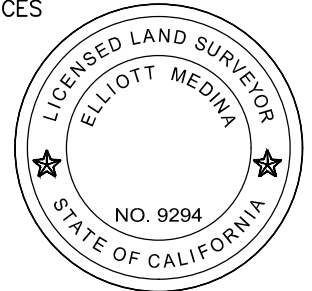
BEARINGS SHOWN HEREON ARE ASSUMED AND ARE DISPLAYED FOR ANGULAR RELATIONSHIP ONLY.

MEASURED DISTANCES SHOWN HEREON ARE GRID DISTANCES, DERIVED BY INVERSE FROM POSITIONS ESTABLISHED BY A FULLY REDUNDANT LEAST SQUARES NETWORK ADJUSTMENT. ALL POINTS WERE EITHER TRAVERSED THROUGH OR DOUBLE DETERMINED, PER CHAPTERS 5 & 11 OF THE OC SURVEY STANDARDS MANUAL. TO OBTAIN A GROUND DISTANCE, MULTIPLY A GRID DISTANCE BY 1.00001349.

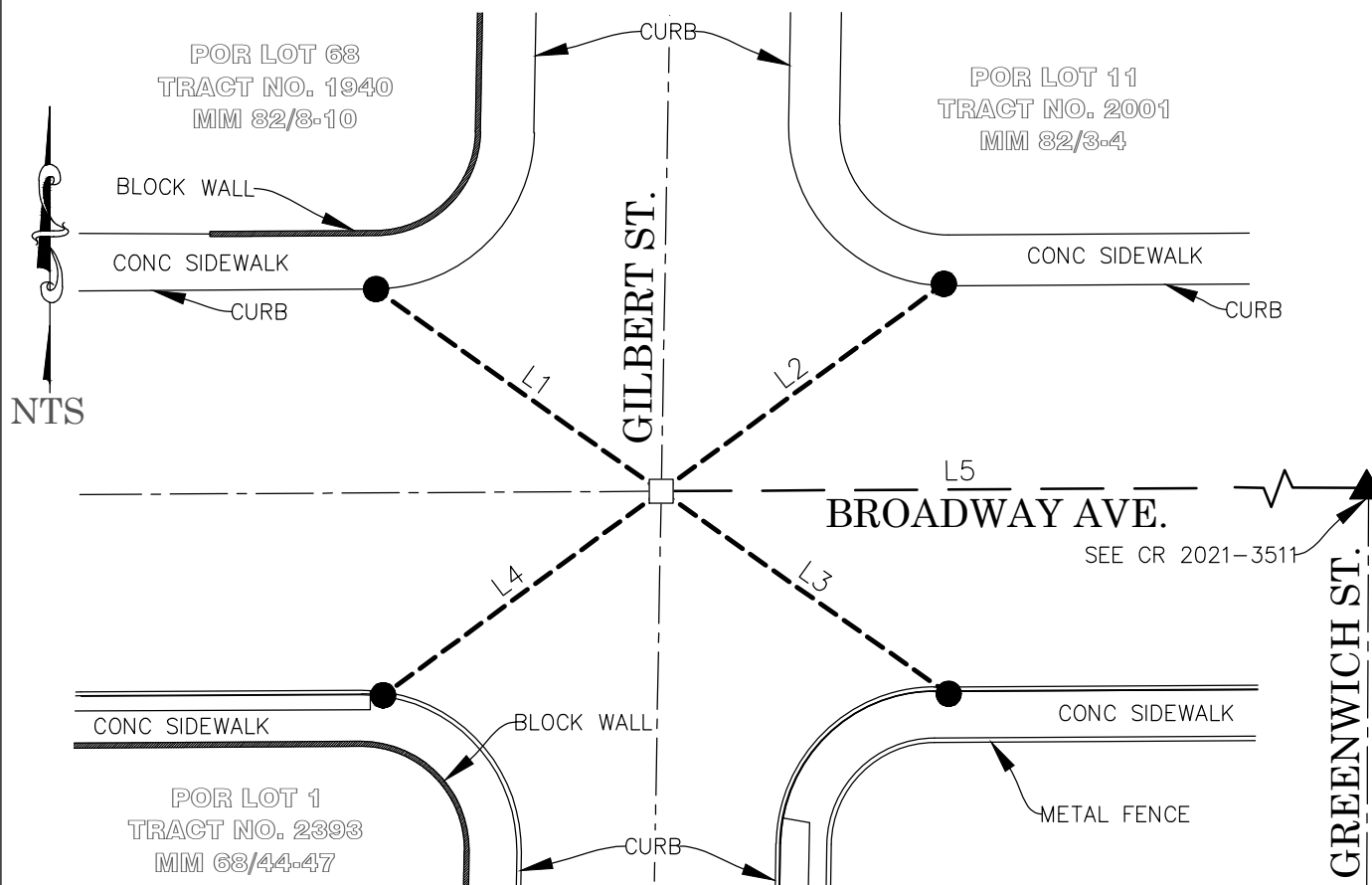
RECORD DISTANCES SHOWN HEREON ARE AS THEY APPEAR ON THE DOCUMENT OF RECORD. DISTANCES MAY BE EITHER GRID OR GROUND, AS PER SAID RECORD.

SURVEYOR'S STATEMENT

This Corner Record was prepared by me or under my direction in conformance with

the Professional Land Surveyors' Act on 02-01-2022Signed Elliott Medina (P.L.S.) or R.C.E. No. 9294**COUNTY SURVEYOR'S STATEMENT**This Corner Record was received FEBRUARY 1, 2022and examined and filed AUGUST 15, 2022Signed Kevin R. Hills (P.L.S.) or R.C.E. No. 6617Title COUNTY SURVEYOR

County Surveyor's Comment _____

POST-CONSTRUCTION CORNER RECORD**RECORD REFERENCES:**

R1 CORNER RECORD 2020-2030

R2 CITY OF ANAHEIM TIE BOOK 49, PG 158

LEGEND:

- - - REF LINE 1: APPARENT CENTERLINE
 - - - REF LINE 2: TIE LINES
 - - - REF LINE 3: MEAS BETWEEN MONUMENTS

OCS ORANGE COUNTY SURVEYOR
 SS STAINLESS STEEL

| LINE TABLE | | | |
|------------|--------------------|---------------------|-----|
| LINE # | MEAS & REC BEARING | MEAS & REC DISTANCE | REF |
| L1 | N54°46'53"W | 55.29' | R1 |
| L2 | N53°43'47"E | 55.06' | R1 |
| L3 | N54°47'36"W | 55.27' | R1 |
| L4 | N53°43'25"E | 55.12' | R1 |
| L5 | N89°39'57"E | 1460.11' | R1 |

MONUMENT NOTES:

- ☐ SEARCHED, FOUND NOTHING; POINT FALLS ON UTILITY COVER; ESTABLISHED POSITION PER TIES SHOWN HEREON AND SET FOUR 2' TANGENT-OVER SWING TIES TO SAID POSITION, THE SET SWING TIES BEING SPIKE & 1-1/2" SS WSHR STMPD "OCS TIE", FLUSH IN AC
☒ FD LEAD & 3/4" BR TAG STMPD "CITY OF ANAHEIM SUR. DIV." ON TOP OF CONC CURB, PER R2
☒ FD MONUMENT AS DESCRIBED ON ADJACENT CORNER RECORD