

CORNER RECORD

Agency Index _____

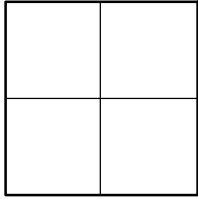
Document Number

CR 2021-3516

City of UNINCORPORATED TERRITORY

County of ORANGE, California

Brief Legal Description AT THE APPARENT INTERSECTION OF BROADWAY AVE & THISTLE RD



CORNER TYPE

- ☐ Government Corner ☐ Control
☐ Meander ☐ Property
☐ Rancho ☒ Other

Date of Survey 10-02-2021

COORDINATES (Optional)

N. _____ E. _____

Elevation _____

Units Metric ☐ U.S. Survey Foot ☒

Horizontal Datum _____

Zone _____ Epoch Date _____

Vertical Datum _____

☐ Complies with Public Resources Code §§8801-8819☐ Complies with Public Resources Code §§8890-8902PLS Act Ref: ☐ 8765(d)☒ 8771☐ 8773☐ Other:Corner/ ☐ Left as found☐ Established☐ Rebuilt☐ Pre-ConstructionMonument: ☐ Found and tagged☒ Reestablished☐ Referenced☒ Post-Construction

Narrative of corner identified and monument as found, set, reset, replaced, or removed:

☒ See sheet #2 for description (s):

THE PURPOSE OF THIS RECORD IS TO DOCUMENT THE PERPETUATION OF FOUND MONUMENT(S) PURSUANT TO THE PLS ACT SECTION 8771. NO CLAIM IS MADE AS TO THE RELATIONSHIP OF THE POINTS SHOWN HEREON TO TRUE BOUNDARY LOCATIONS. RIGHT OF WAY, PARCEL, OR LOT LINES, OR ANY OTHER DATA RELATED TO DELINEATION OF PROPERTY RIGHTS ARE DISPLAYED FOR GRAPHICAL REPRESENTATION ONLY.

BEARINGS SHOWN HEREON ARE ASSUMED AND ARE DISPLAYED FOR ANGULAR RELATIONSHIP ONLY.

MEASURED DISTANCES SHOWN HEREON ARE GRID DISTANCES, DERIVED BY INVERSE FROM POSITIONS ESTABLISHED BY A FULLY REDUNDANT LEAST SQUARES NETWORK ADJUSTMENT. ALL POINTS WERE EITHER TRAVERSED THROUGH OR DOUBLE DETERMINED, PER CHAPTERS 5 & 11 OF THE OC SURVEY STANDARDS MANUAL. TO OBTAIN A GROUND DISTANCE, MULTIPLY A GRID DISTANCE BY 1.00001368.

RECORD DISTANCES SHOWN HEREON ARE AS THEY APPEAR ON THE DOCUMENT OF RECORD. DISTANCES MAY BE EITHER GRID OR GROUND, AS PER SAID RECORD.

SURVEYOR'S STATEMENT

This Corner Record was prepared by me or under my direction in conformance with

the Professional Land Surveyors' Act on 02-01-2022

Signed

(P.L.S.)

or

R.C.E. No.

9294



COUNTY SURVEYOR'S STATEMENT

This Corner Record was received

FEBRUARY 1, 2022

and examined and filed

AUGUST 15, 2022

Signed

(P.L.S.)

or

R.C.E. No.

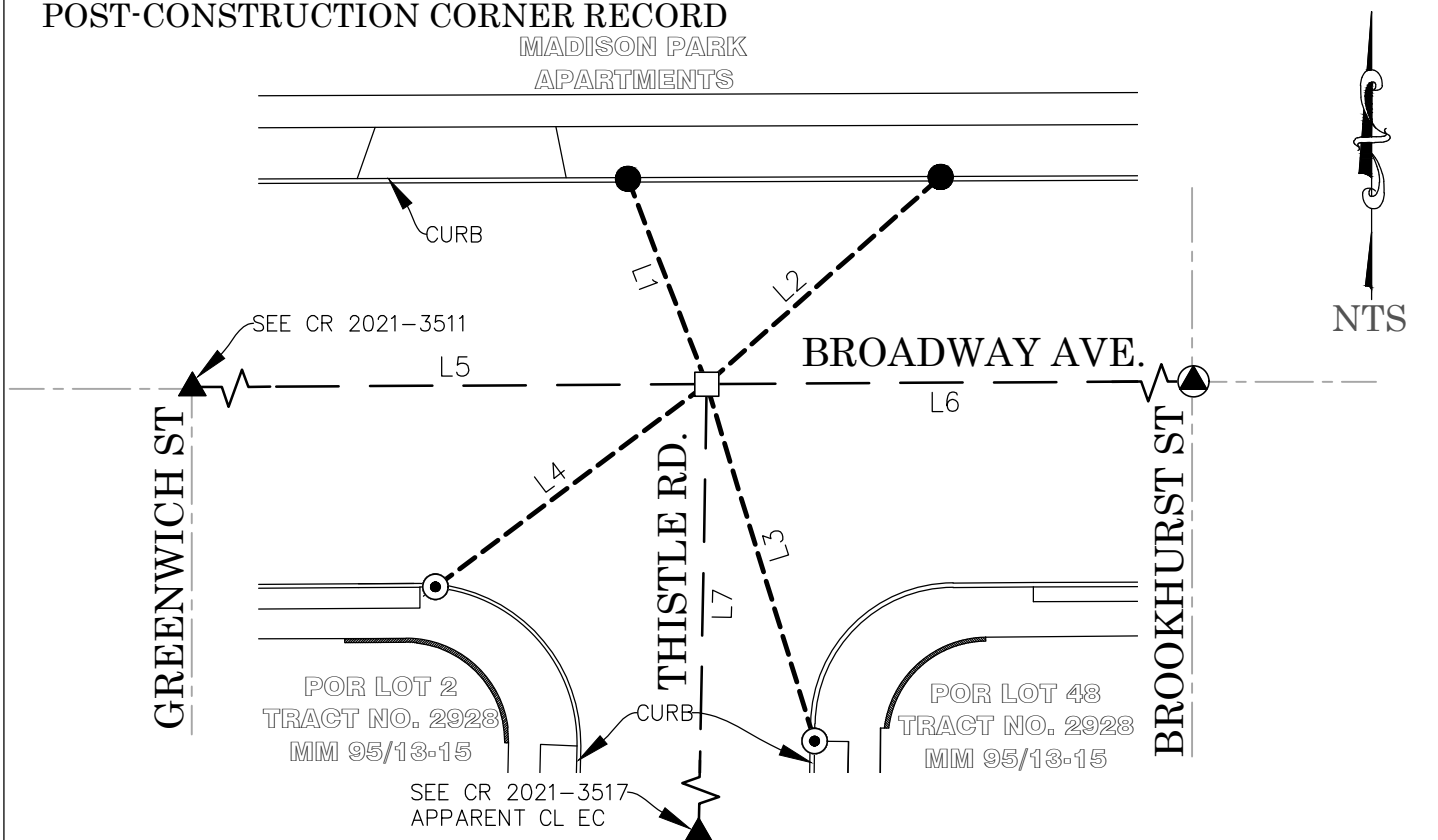
6617

Title

COUNTY SURVEYOR



County Surveyor's Comment

POST-CONSTRUCTION CORNER RECORDMADISON PARK
APARTMENTS**RECORD REFERENCES:**

R1 CORNER RECORD 2021-2037

R2 CORNER RECORD 2013-3057

R3 CITY OF ANAHEIM TIE BOOK 41, PG 106

LEGEND:

- — — REF LINE 1: APPARENT CENTERLINE
- — — REF LINE 2: TIE LINES
- — — REF LINE 3: MEAS BETWEEN MONUMENTS

OCS ORANGE COUNTY SURVEYOR

SS STAINLESS STEEL

LINE TABLE

| LINE # | MEAS & REC BEARING | MEAS & REC DISTANCE | REF |
|--------|--------------------|---------------------|-----|
| L1 | N20°59'45"W | 34.37' | R1 |
| L2 | N48°28'12"E | 48.83' | R1 |
| L3 | N17°12'03"W | 58.73' | R1 |
| L4 | N53°18'29"E | 54.55' | R1 |
| L5 | N89°39'02"E | 461.10' | R1 |
| L6 | N89°39'22"E | 713.72' | R1 |
| L7 | N01°00'48"E | 171.20' | R1 |

MONUMENT NOTES:

□ SEARCHED, FOUND NOTHING; SET SPIKE & 1-1/2" SS WSHR STMPD "OCS" FLUSH IN AC, PER TIES SHOWN HEREON

● FD LEAD & 3/4" BR TAG STMPD "LS 8407" ON TOP OF CONC CURB, PER R2

⊙ FD LEAD & 3/4" BR TAG STMPD "OCS TIE" ON TOP OF CONC CURB, PER R1

▲ FD MONUMENT WELL WITH 2" BR DISK, PER R3, DN 1.6'

▲ FD MONUMENT AS DESCRIBED ON ADJACENT CORNER RECORD