



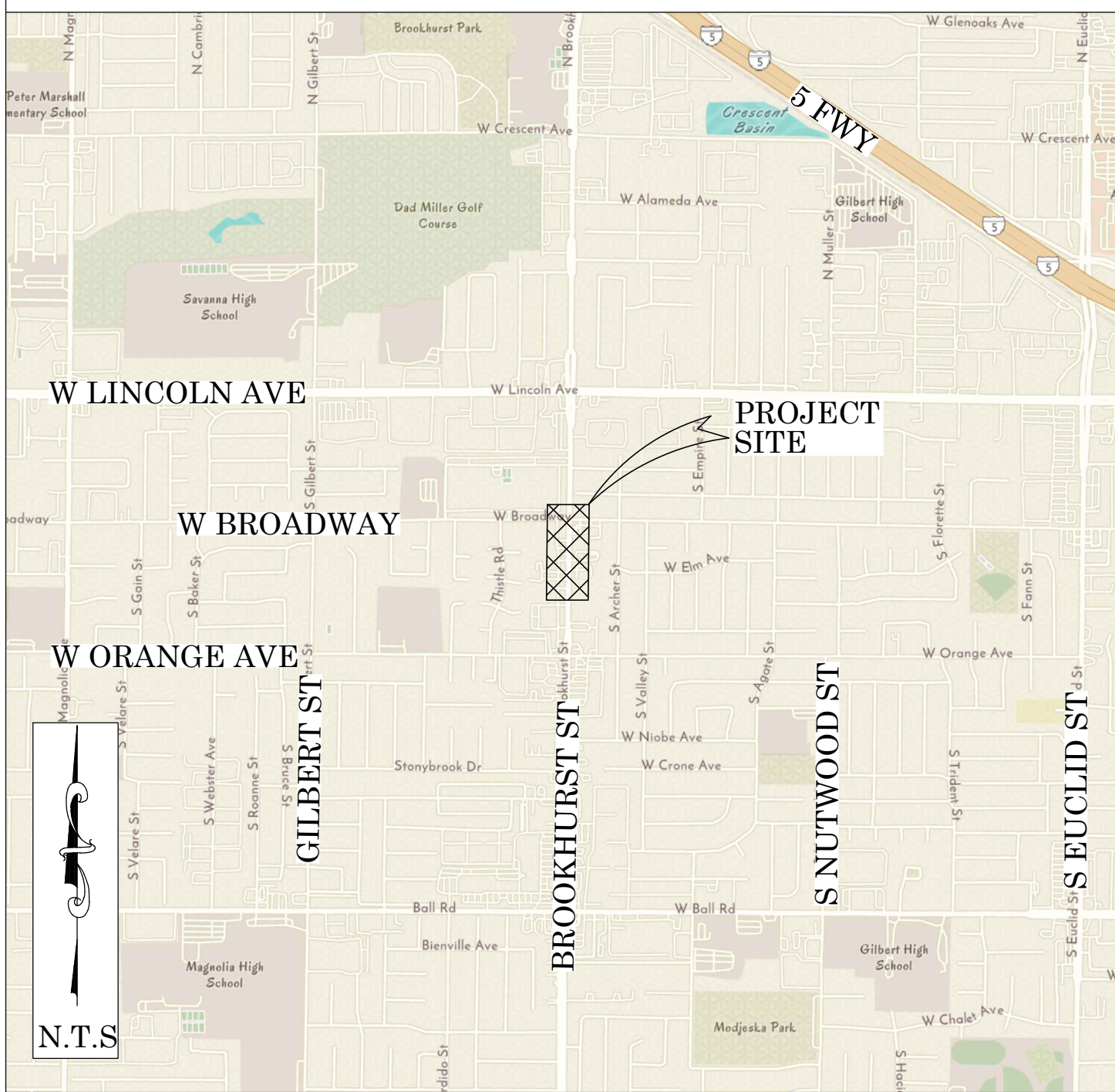
OC PUBLIC WORKS DEPARTMENT

KEVIN ONUMA, DIRECTOR OF PUBLIC WORKS

BROOKHURST ST CORRIDOR IMPROVEMENTS



LOCATION MAP



N.T.S.

SENIOR LAND SURVEYOR'S CERTIFICATE:

THIS MAP CORRECTLY REPRESENTS A SURVEY MADE BY ME OR UNDER MY DIRECTION IN CONFORMANCE WITH REQUIREMENTS OF THE PROFESSIONAL LAND SURVEYORS' ACT;THIS 3 DAY OF APRIL, 2025.

DocuSigned by:
Elliott Medina
F0F87FC875645
ELLIOTT MEDINA, PLS. SENIOR LAND SURVEYOR



SENIOR LAND SURVEYOR'S CERTIFICATE:

THIS MAP HAS BEEN EXAMINED IN ACCORDANCE WITH THE PROFESSIONAL LAND SURVEYORS' ACT;THIS 3 DAY OF APRIL, 2025.

DocuSigned by:
Jesom Moreno
11A5FF7F69B26A7B
JESOM MORENO, PLS. SENIOR LAND SURVEYOR



U.S. Survey
Foot

OC Public Works
OC Survey/Field Services
Boundary Analysis & Mapping



FOUND CGPS "SACY"
N: 2218016.19
E: 6061432.27
THIS IS A CONTINUOUS GPS STATION
(CGPS) AND IS PART OF THE CALIFORNIA
SPATIAL REFERENCE NETWORK (CSRN).

N80°43'39.27"E 46,762.53'
BASIS OF BEARINGS

TOPOGRAPHIC MAPPING PROJECT

BASIS OF BEARINGS

THE BASIS OF BEARINGS FOR THIS SURVEY IS BASED ON THE CALIFORNIA COORDINATE SYSTEM (CCS83), ZONE VI, NAD 83, OCS (2017.50) EPOCH ADJUSTMENT, AS DETERMINED LOCALLY BY A LINE BETWEEN CONTINUOUS GLOBAL POSITIONING STATIONS CGPS "SACY" AND "OECC" BEING NORTH 80°43'39" EAST AS DERIVED FROM THE COORDINATES PUBLISHED BY THE CALIFORNIA SPATIAL REFERENCE CENTER (CSRC) ALONG WITH DATA SHEETS ON FILE IN THE OFFICE OF THE ORANGE COUNTY SURVEYOR.

HORIZONTAL DATUM

COORDINATES SHOWN ARE BASED ON THE CALIFORNIA COORDINATE SYSTEM (CCS83), ZONE VI, NAD 83, OCS (2017.50) EPOCH ADJUSTMENT.

ALL DISTANCES SHOWN ARE GRID, UNLESS OTHERWISE NOTED. TO OBTAIN GROUND DISTANCES MULTIPLY GRID BY A COMBINED FACTOR OF 1.00000868.

THIS COMBINATION FACTOR WAS HELD AT: CP# 300
N: 2248555.96 E: 6042611.07 EL: 108.54'

ALL DISTANCES ARE BASED ON THE U.S. SURVEY FOOT.

VERTICAL DATUM

O.C.S. BM. 1G-140-69 ELEV. = 84.582' YEAR LEVELED: 2005

NAVD 1988 (O.C.S. 1995 ADJUSTMENT)

DESCRIPTION: FOUND 3 3/4" OCS ALUMINUM BENCHMARK DISK STAMPED "1G-140-69", SET IN THE NORTHWESTERLY CORNER OF A 16 FT. BY 9 FT. CONCRETE CATCH BASIN. MONUMENT IS LOCATED IN THE NORTHEASTERLY CORNER OF THE INTERSECTION OF BALL ROAD AND MAGNOLIA STREET, 46 FT. NORTHERLY OF THE CENTERLINE OF BALL, AND 107 FT. EASTERLY OF THE CENTERLINE OF MAGNOLIA. MONUMENT IS SET LEVEL WITH THE SIDEWALK.

NOTES

THE SURVEY INFORMATION SHOWN HEREON IS TO BE USED FOR TOPOGRAPHIC RELATIONSHIPS ONLY AND IS NOT INTENDED FOR LAND ACQUISITION OR BOUNDARY PURPOSES. DATA WAS COLLECTED USING DRONE AERIAL LIDAR FOR AREAS OUTSIDE OF CONVENTIONAL TOPO LIMITS.

SHEET INDEX

SHEET	NO.	DESCRIPTION
SHEET 1	1	TITLE SHEET
SHEET 2	2	BOUNDARY SHEET
SHEETS 3-4	3-4	TOPOGRAPHIC MAP

PURPOSE OF SURVEY

THE PURPOSE OF THE SURVEY IS TO PROVIDE A TOPOGRAPHIC MAP AND RIGHT OF WAY ESTABLISHMENT FOR THIS PORTION OF W BROADWAY AND BROOKHURST ST.

		COUNTY OF ORANGE OC PUBLIC WORKS OC CONSTRUCTION/ SURVEY-FIELD SERVICES	
		BROOKHURST ST CORRIDOR CORRIDOR IMPROVEMENT PROJECT	
		TITLE SHEET	
		PROJECT LIMITS: W BROADWAY AND BROOKHURST ST INTERSECTION TO 750' SOUTH	
		ALONG BROOKHURST ST	
		DATE OF SURVEY: FEB. 2025	BY: K. MARTINEZ & PARTY
		MAPPING	BY: J. PEDRETTI, LSIT, EIT
		OFFICE CHECK	BY: J. MORENO, PLS
		FIELD CHECK	BY: K. MARTINEZ & PARTY
		SCALE: N.T.S.	W.O. #E025004S
		FILE: BROOKHURST_TOPO_2025.DWG	FILE: #2425PW-PR0003
MARK	DATE	ITEM	
REVISIONS			
			SHEET NO. 1 of 4

BASIS OF BEARINGS

THE BASIS OF BEARINGS FOR THIS SURVEY IS BASED ON THE CALIFORNIA COORDINATE SYSTEM (CCS83), ZONE VI, NAD 83, OCS (2017.50) EPOCH ADJUSTMENT, AS DETERMINED LOCALLY BY A LINE BETWEEN CONTINUOUS GLOBAL POSITIONING STATIONS CGPS "SACY" AND "OEOC" BEING NORTH 80°43'39" EAST AS DERIVED FROM THE COORDINATES PUBLISHED BY THE CALIFORNIA SPATIAL REFERENCE CENTER (CSRC) ALONG WITH DATA SHEETS ON FILE IN THE OFFICE OF THE ORANGE COUNTY SURVEYOR.

HORIZONTAL DATUM

COORDINATES SHOWN ARE BASED ON THE CALIFORNIA COORDINATE SYSTEM (CCS83), ZONE VI, NAD 83, OCS (2017.50) EPOCH ADJUSTMENT.

ALL DISTANCES SHOWN ARE GRID, UNLESS OTHERWISE NOTED. TO OBTAIN GROUND DISTANCE MULTIPLY A GRID DISTANCE BY 1.00000868.

COMBINATION FACTOR WAS HELD AT POINT NUMBER 300
N: 2248555.96, E: 6042611.07, ELEVATION= 108.37'.

RECORD DISTANCES SHOWN HEREON ARE AS THEY APPEAR ON THE DOCUMENT OF RECORD. DISTANCES MAY BE EITHER GRID OR GROUND, AS PER SAID RECORD.

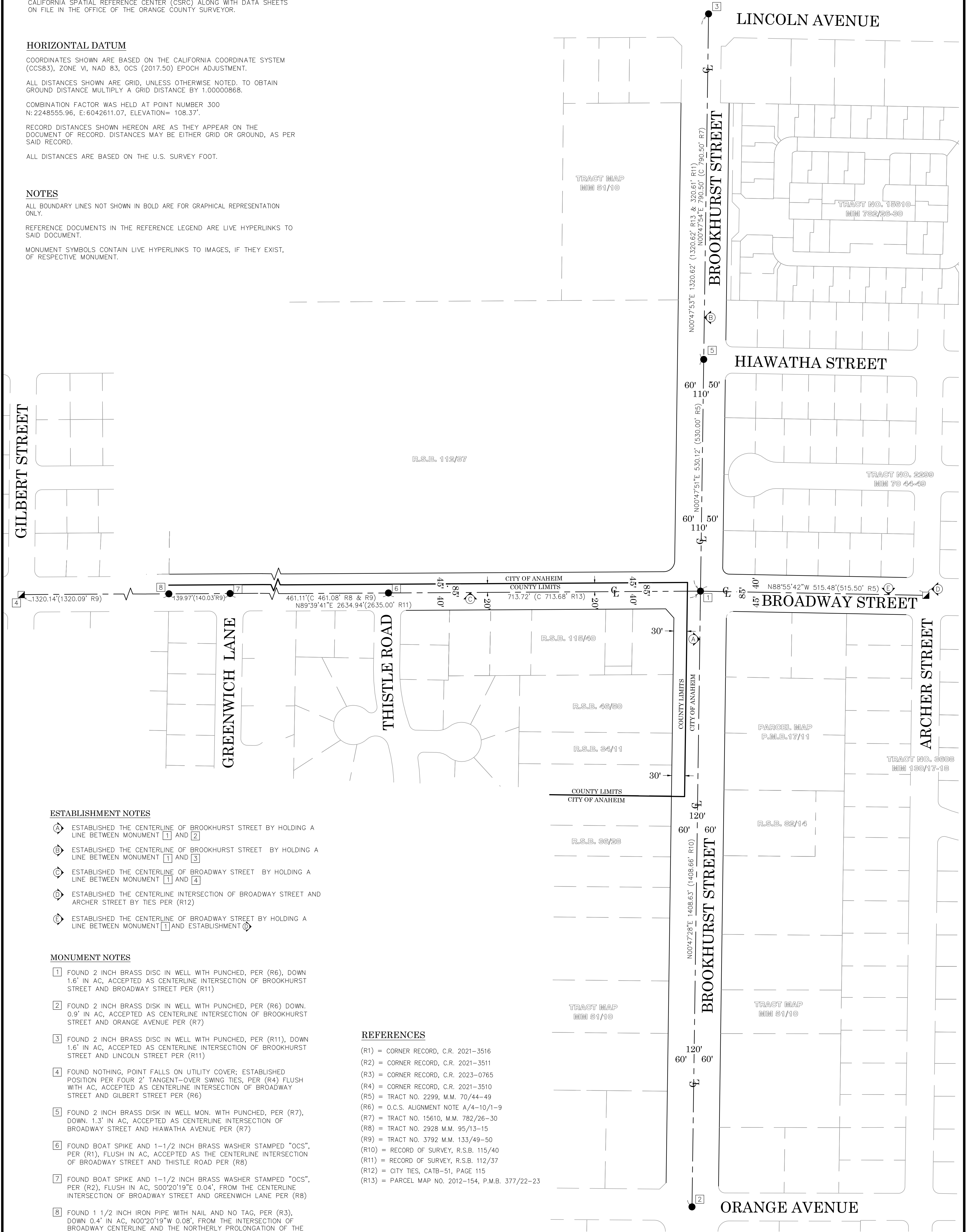
ALL DISTANCES ARE BASED ON THE U.S. SURVEY FOOT.

NOTES

ALL BOUNDARY LINES NOT SHOWN IN BOLD ARE FOR GRAPHICAL REPRESENTATION ONLY.

REFERENCE DOCUMENTS IN THE REFERENCE LEGEND ARE LIVE HYPERLINKS TO SAID DOCUMENT.

MONUMENT SYMBOLS CONTAIN LIVE HYPERLINKS TO IMAGES, IF THEY EXIST, OF RESPECTIVE MONUMENT.



ESTABLISHMENT NOTES

- Ⓐ ESTABLISHED THE CENTERLINE OF BROOKHURST STREET BY HOLDING A LINE BETWEEN MONUMENT 1 AND 2
- Ⓑ ESTABLISHED THE CENTERLINE OF BROOKHURST STREET BY HOLDING A LINE BETWEEN MONUMENT 1 AND 3
- Ⓒ ESTABLISHED THE CENTERLINE OF BROADWAY STREET BY HOLDING A LINE BETWEEN MONUMENT 1 AND 4
- Ⓓ ESTABLISHED THE CENTERLINE INTERSECTION OF BROADWAY STREET AND ARCHER STREET BY TIES PER (R12)
- Ⓔ ESTABLISHED THE CENTERLINE OF BROADWAY STREET BY HOLDING A LINE BETWEEN MONUMENT 1 AND ESTABLISHMENT Ⓓ

MONUMENT NOTES

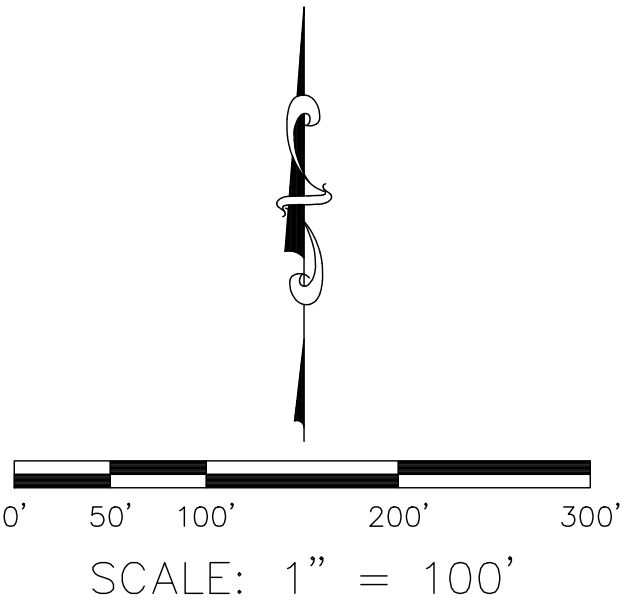
- 1 FOUND 2 INCH BRASS DISC IN WELL WITH PUNCHED, PER (R6), DOWN 1.6' IN AC, ACCEPTED AS CENTERLINE INTERSECTION OF BROOKHURST STREET AND BROADWAY STREET PER (R11)
- 2 FOUND 2 INCH BRASS DISK IN WELL WITH PUNCHED, PER (R6) DOWN. 0.9' IN AC, ACCEPTED AS CENTERLINE INTERSECTION OF BROOKHURST STREET AND ORANGE AVENUE PER (R7)
- 3 FOUND 2 INCH BRASS DISC IN WELL WITH PUNCHED, PER (R11), DOWN 1.6' IN AC, ACCEPTED AS CENTERLINE INTERSECTION OF BROOKHURST STREET AND LINCOLN STREET PER (R11)
- 4 FOUND NOTHING, POINT FALLS ON UTILITY COVER; ESTABLISHED POSITION PER FOUR 2' TANGENT-OVER SWING TIES, PER (R4) FLUSH WITH AC, ACCEPTED AS CENTERLINE INTERSECTION OF BROADWAY STREET AND GILBERT STREET PER (R6)
- 5 FOUND 2 INCH BRASS DISK IN WELL MON. WITH PUNCHED, PER (R7), DOWN. 1.3' IN AC, ACCEPTED AS CENTERLINE INTERSECTION OF BROADWAY STREET AND HIAWATHA AVENUE PER (R7)
- 6 FOUND BOAT SPIKE AND 1-1/2 INCH BRASS WASHER STAMPED "OCS", PER (R1), FLUSH IN AC, ACCEPTED AS THE CENTERLINE INTERSECTION OF BROADWAY STREET AND THISTLE ROAD PER (R8)
- 7 FOUND BOAT SPIKE AND 1-1/2 INCH BRASS WASHER STAMPED "OCS", PER (R2), FLUSH IN AC, S00°20'19"E 0.04', FROM THE CENTERLINE INTERSECTION OF BROADWAY STREET AND GREENWICH LANE PER (R8)
- 8 FOUND 1 1/2 INCH IRON PIPE WITH NAIL AND NO TAG, PER (R3), DOWN 0.4' IN AC, N00°20'19"W 0.08', FROM THE INTERSECTION OF BROADWAY CENTERLINE AND THE NORTHERLY PROLONGATION OF THE WESTERLY LINE OF TRACT NO.3792 PER (R9)

REFERENCES

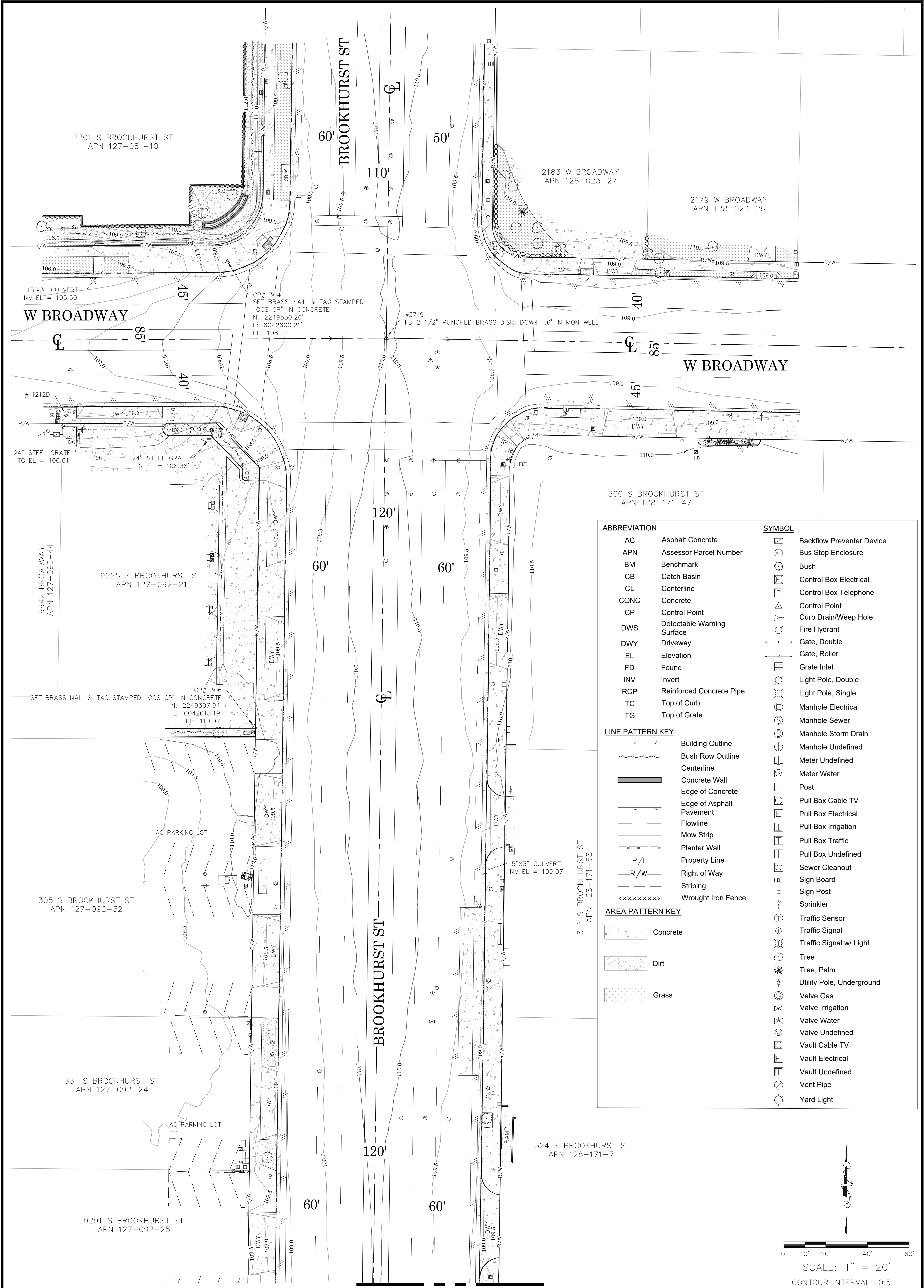
- (R1) = CORNER RECORD, C.R. 2021-3516
- (R2) = CORNER RECORD, C.R. 2021-3511
- (R3) = CORNER RECORD, C.R. 2023-0765
- (R4) = CORNER RECORD, C.R. 2021-3510
- (R5) = TRACT NO. 2299, M.M. 70/44-49
- (R6) = O.C.S. ALIGNMENT NOTE A/4-10/1-9
- (R7) = TRACT NO. 15610, M.M. 782/26-30
- (R8) = TRACT NO. 2928 M.M. 95/13-15
- (R9) = TRACT NO. 3792 M.M. 133/49-50
- (R10) = RECORD OF SURVEY, R.S.B. 115/40
- (R11) = RECORD OF SURVEY, R.S.B. 112/37
- (R12) = CITY TIES, CATB-51, PAGE 115
- (R13) = PARCEL MAP NO. 2012-154, P.M.B. 377/22-23

LEGEND

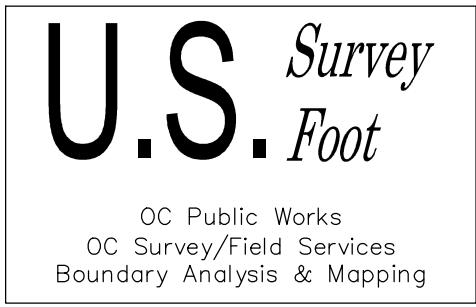
- FOUND MONUMENT AS NOTED
- ⊗ MONUMENT ESTABLISHED BY TIES
- ⊗ S.F.N. - SEARCHED, FOUND NOTHING
- C CALC FROM RECORD MAP
- R RECORD MAP



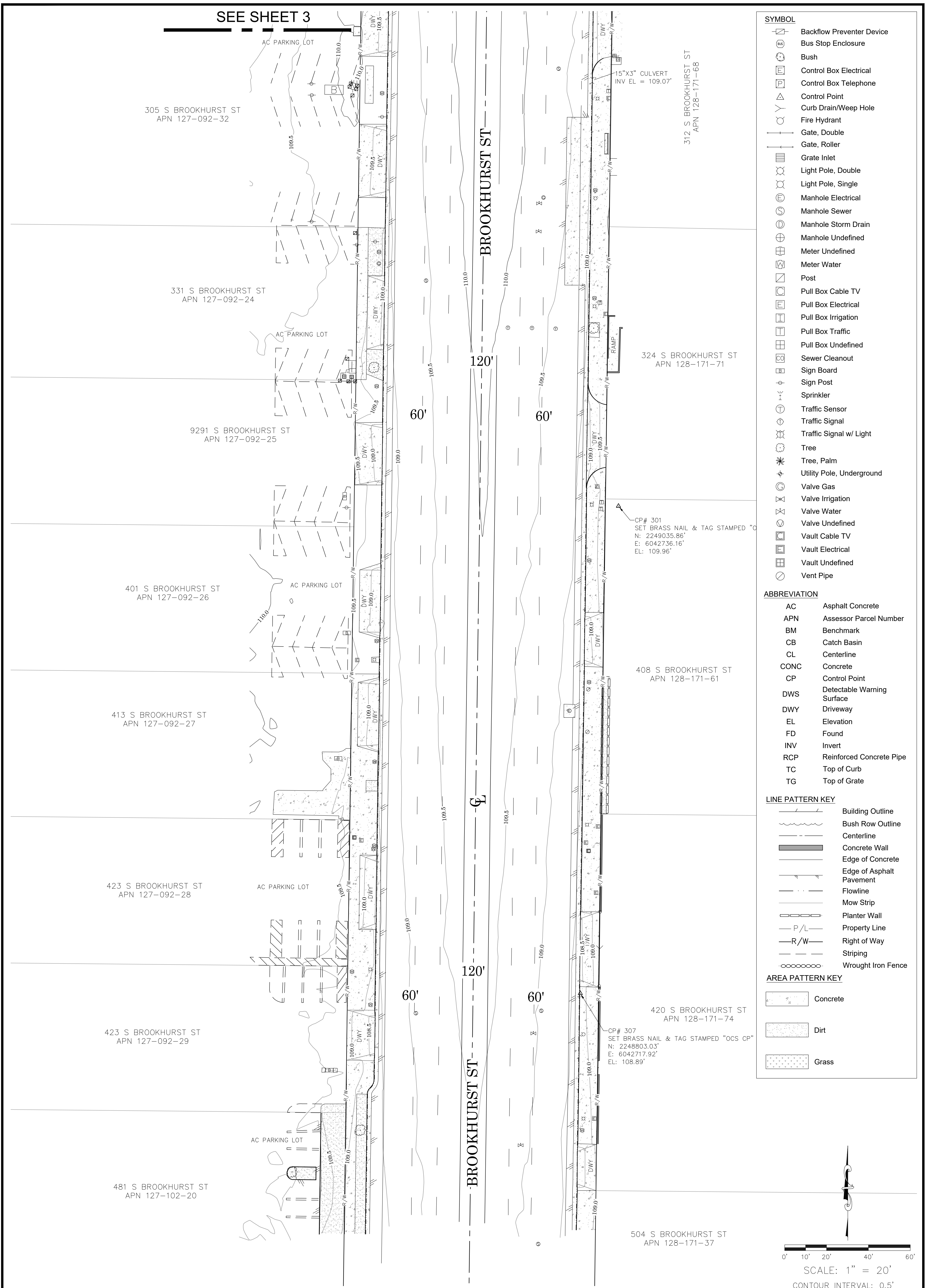
		COUNTY OF ORANGE OC PUBLIC WORKS OC SURVEY/FIELD SERVICES/BOUNDARY ANALYSIS & MAPPING			
		BROOKHURST ST CORRIDOR CORRIDOR IMPROVEMENT PROJECT			
		BOUNDARY MAP			
		PROJECT LIMITS: W BROADWAY AND BROOKHURST ST INTERSECTION TO 750' SOUTH ALONG BROOKHURST ST			
		DATE OF SURVEY: FEB. 2025		BY: K. MARTINEZ & PARTY	
		MAPPING		BY: K. MARTINEZ	
		OFFICE CHECK		BY: J. MORENO, PLS	
		FIELD CHECK		BY: K. MARTINEZ & PARTY	
		SCALE: 1" = 100'		W.O. #EQ25004S	
		FILE: BROOKHURST_BOUNDARY 2025.DWG		FILE # 2425PW-PR0003	
MARK	DATE	ITEM	REVISIONS		
			SHEET NO. 2 of 4		



SEE SHEET 4



		COUNTY OF ORANGE OC PUBLIC WORKS OC CONSTRUCTION/ SURVEY-FIELD SERVICES	
		BROOKHURST ST CORRIDOR CORRIDOR IMPROVEMENT PROJECT	
		TOPOGRAPHIC MAP	
		PROJECT LIMITS: W BROADWAY AND BROOKHURST ST INTERSECTION TO 750' SOUTH	
		ALONG BROOKHURST ST	
		DATE OF SURVEY: FEB. 2025	BY: K. MARTINEZ & PARTY
		MAPPING	BY: J. PEDRETTI, LSIT, EIT
		OFFICE CHECK	BY: J. MORENO, PLS
		FIELD CHECK	BY: K. MARTINEZ & PARTY
		SCALE: N.T.S.	W.O. #EQ250045
		FILE: #2425PW-PRO003	
		FILE: BROOKHURST_TOPO_2025.DWG	
MARK	DATE	ITEM	
REVISIONS			



<div>MARK</div> <div>DATE</div> <div>ITEM</div> <div>REVISIONS</div>	<div>COUNTY OF ORANGE</div> <div>OC PUBLIC WORKS</div> <div>OC CONSTRUCTION/ SURVEY-FIELD SERVICES</div> <div>BROOKHURST ST CORRIDOR</div> <div>CORRIDOR IMPROVEMENT PROJECT</div>			<div>SHEET NO.</div> <div>4</div> <div>of</div> <div>4</div>
	TOPOGRAPHIC MAP			
	PROJECT LIMITS: W BROADWAY AND BROOKHURST ST INTERSECTION TO 750' SOUTH			
	ALONG BROOKHURST ST			
	DATE OF SURVEY: FEB. 2025		BY: K. MARTINEZ & PARTY	
	MAPPING		BY: J. PEDRETTI, LSIT, EIT	
	OFFICE CHECK		BY: J. MORENO, PLS	
	FIELD CHECK		BY: K. MARTINEZ & PARTY	
	SCALE: N.T.S.		FILE #E025004S	
	FILE: BROOKHURST_TOPO_2025.DWG		FILE #2425PW-PR0003	