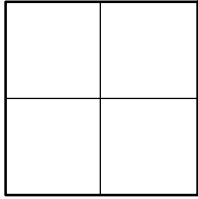


CORNER RECORD

Agency Index _____

Document Number CR 2022-3401City of UNINCORPORATED TERRITORYCounty of ORANGE, CaliforniaBrief Legal Description ALONG TONNER CANYON RD: AT THE APPARENT EC +/- 306' S'LY OF BREA BLVD**CORNER TYPE**

- | | |
|--|---|
| <input type="checkbox"/> Government Corner | <input type="checkbox"/> Control |
| <input type="checkbox"/> Meander | <input type="checkbox"/> Property |
| <input type="checkbox"/> Rancho | <input checked="" type="checkbox"/> Other |

Date of Survey 11-03-2022**COORDINATES (Optional)**

N. _____ E. _____

Elevation _____

Units Metric ☐ U.S. Survey Foot ☒

Horizontal Datum _____

Zone _____ Epoch Date _____

Vertical Datum _____

☐ Complies with Public Resources Code §§8801-8819☐ Complies with Public Resources Code §§8890-8902PLS Act Ref: ☐ 8765(d)☒ 8771☐ 8773☐ Other: _____Corner/ ☒ Left as found☐ Established☐ Rebuilt☐ Pre-ConstructionMonument: ☐ Found and tagged☒ Reestablished☐ Referenced☒ Post-Construction

Narrative of corner identified and monument as found, set, reset, replaced, or removed:

☒ See sheet #2 for description (s):

NO CLAIM IS MADE AS TO THE RELATIONSHIP OF THE POINTS SHOWN HEREON TO TRUE BOUNDARY LOCATIONS. RIGHT OF WAY, PARCEL, OR LOT LINES, OR ANY OTHER DATA RELATED TO DELINEATION OF PROPERTY RIGHTS ARE DISPLAYED FOR GRAPHICAL REPRESENTATION ONLY.

BEARINGS SHOWN HEREON ARE ASSUMED AND ARE DISPLAYED FOR ANGULAR RELATIONSHIP ONLY.

MEASURED DISTANCES SHOWN HEREON ARE GRID DISTANCES, DERIVED BY INVERSE FROM POSITIONS ESTABLISHED BY A FULLY REDUNDANT LEAST SQUARES NETWORK ADJUSTMENT. ALL POINTS WERE EITHER TRAVERSED THROUGH OR DOUBLE DETERMINED, PER CHAPTERS 5 & 11 OF THE OC SURVEY STANDARDS MANUAL. TO OBTAIN A GROUND DISTANCE, MULTIPLY A GRID DISTANCE BY 1.00000705.

RECORD DISTANCES SHOWN HEREON ARE AS THEY APPEAR ON THE DOCUMENT OF RECORD. DISTANCES MAY BE EITHER GRID OR GROUND, AS PER SAID RECORD. ALL DISTANCES WERE FIELD VERIFIED USING ELECTRONIC DISTANCE MEASUREMENTS.

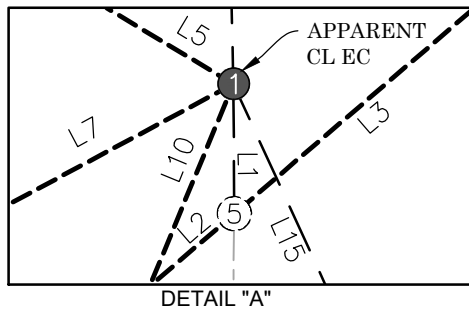
SURVEYOR'S STATEMENT

This Corner Record was prepared by me or under my direction in conformance with

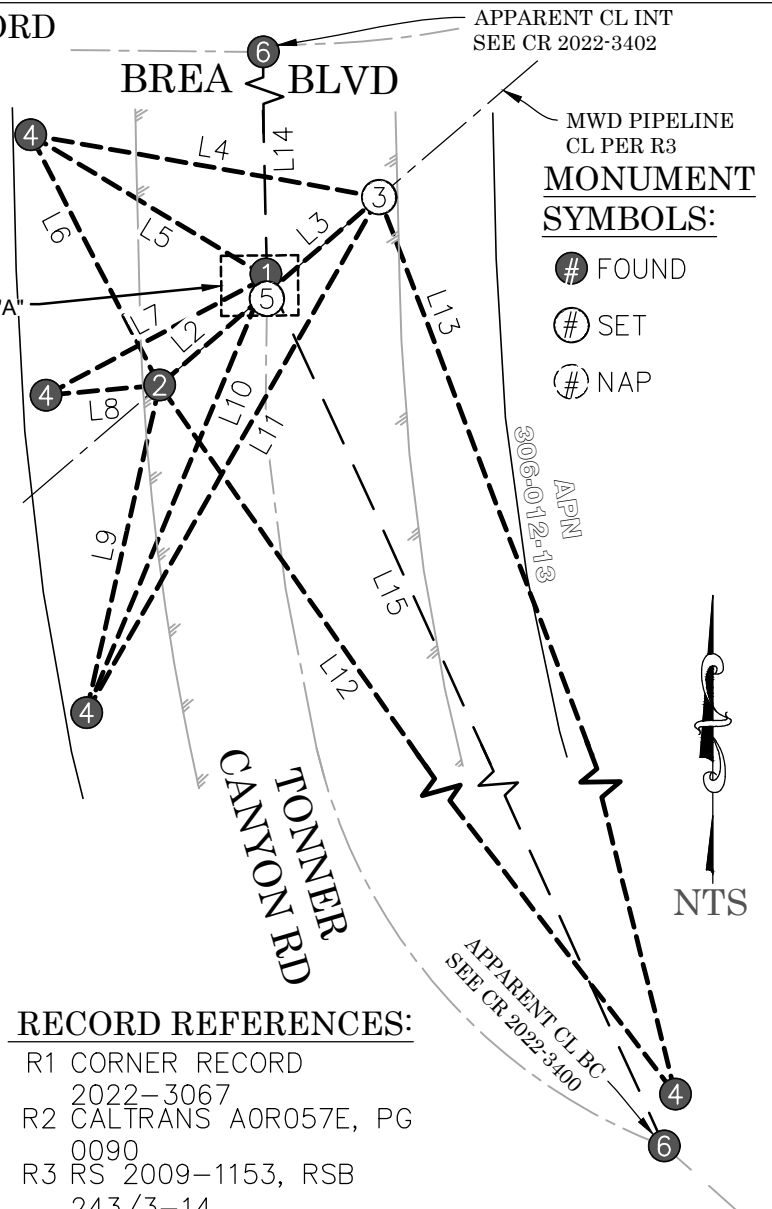
the Professional Land Surveyors' Act on 11-15-2022Signed _____ (P.L.S.) or R.C.E. No. 8036**COUNTY SURVEYOR'S STATEMENT**This Corner Record was received 11-15-2022and examined and filed 02-24-2023Signed Michael LaFontaine (P.L.S.) or R.C.E. No. 8970Title DEPUTY COUNTY SURVEYOR

County Surveyor's Comment _____

POST-CONSTRUCTION CORNER RECORD



306-011-03
APN
SEE DETAIL "A"



LINE TABLE			
LINE #	MEAS & REC BEARING	MEAS & REC DISTANCE	REF
L1 CHORD	N00°24'26"W	3.38'	R1
L2	N49°24'25"E	29.49'	R1
L3	N49°24'25"E	30.74'	R1
L4	N79°53'14"W	73.74'	R1
L5	N59°00'20"W	57.42'	R1
L6	N27°15'16"W	58.65'	R1
L7	N61°50'08"E	52.26'	R1
L8	N84°55'50"E	23.80'	R1
L9	N12°35'11"E	69.91'	R1
L10	N22°29'48"E	98.27'	R1
L11	N29°34'42"E	123.51'	R1
L12	N34°57'04"W	233.23'	R1
L13	N20°52'53"W	246.55'	R1
L14	N01°18'20"W	306.29'	R1
L15 CHORD	N24°38'58"W	396.39'	R1

RECORD REFERENCES:

R1 CORNER RECORD
2022-3067
R2 CALTRANS AOR057E, PG
0090
R3 RS 2009-1153, RSB
243/3-14

LEGEND:

— — — REF LINE 1: APPARENT CENTERLINE
 - - - REF LINE 2: TIE LINES
 — — — REF LINE 3: MEAS BETWEEN MONUMENTS
 — — — REF LINE 4: EDGE OF PAVEMENT

OCS ORANGE COUNTY SURVEYOR

SFN SEARCHED, FOUND NOTHING

MONUMENT NOTES:

- ① FD SPIKE & 1-1/2" WSHR STMPD "DIV OF HWYS", PER R2, DN 0.1 IN AC
- ② FD GEAR SPIKE & 1-1/2" WSHR STMPD "LS 6187", PER R3, FLUSH IN AC
- ③ SFN; SET SPIKE & 1-1/2" WSHR STMPD "OCS", FLUSH IN AC, PER TIES AS SHOWN HEREON
- ④ FD 1" IP & 3/4" TAG STMPD "OCS TIE", PER R1, DN 0.3' IN DIRT
- ⑤ SEARCHED, FD NOTHING, SET NOTHING; ESTABLISHED CALC POSITION PER R3 DATA, AS SHOWN ON PRE CONST CR 2022-3067 (R1)
- ⑥ FD MONUMENT AS DESCRIBED ON ADJACENT CORNER RECORD