



OC PUBLIC WORKS DEPARTMENT

JAMES TREADAWAY, DIRECTOR OF PUBLIC WORKS

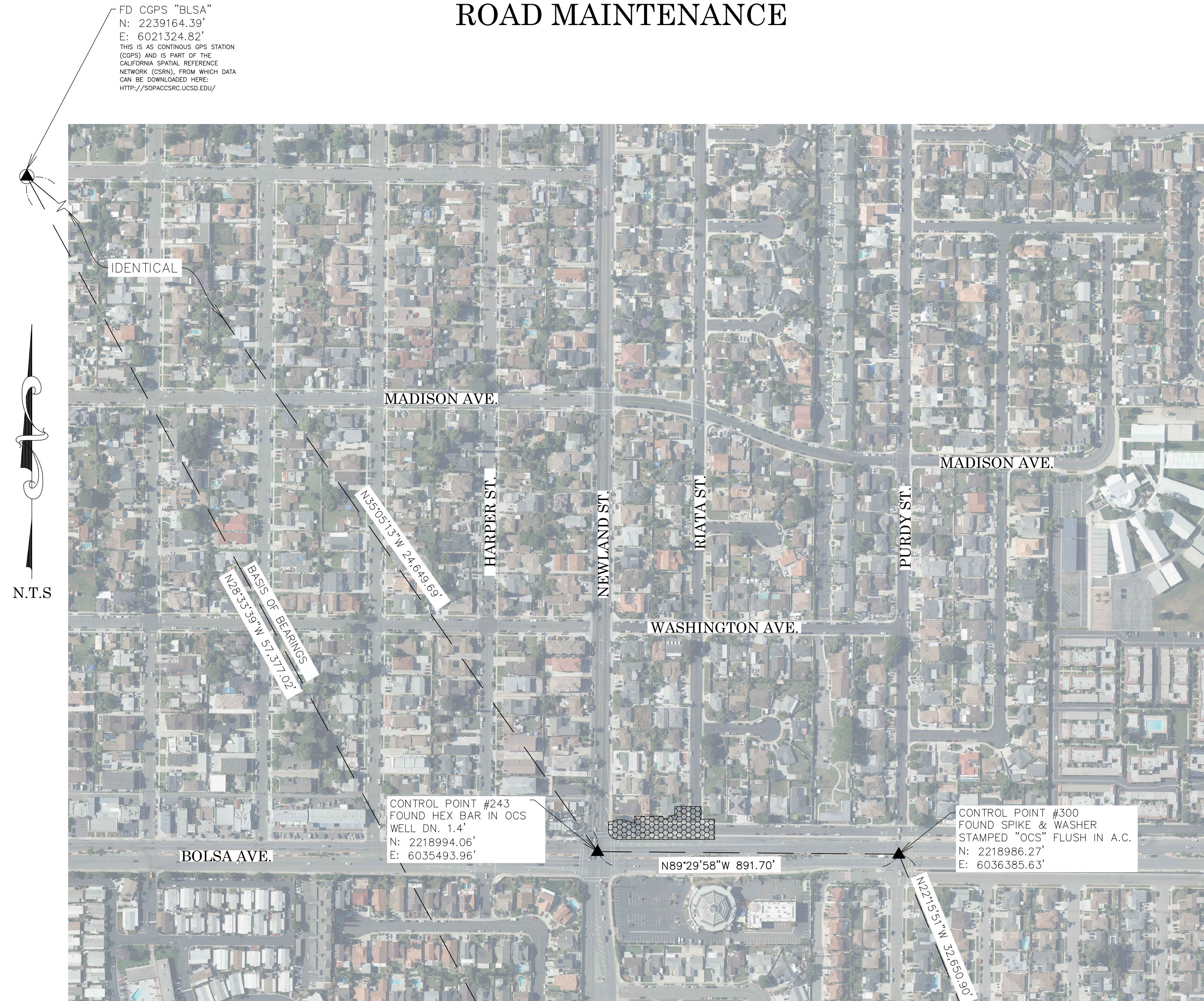
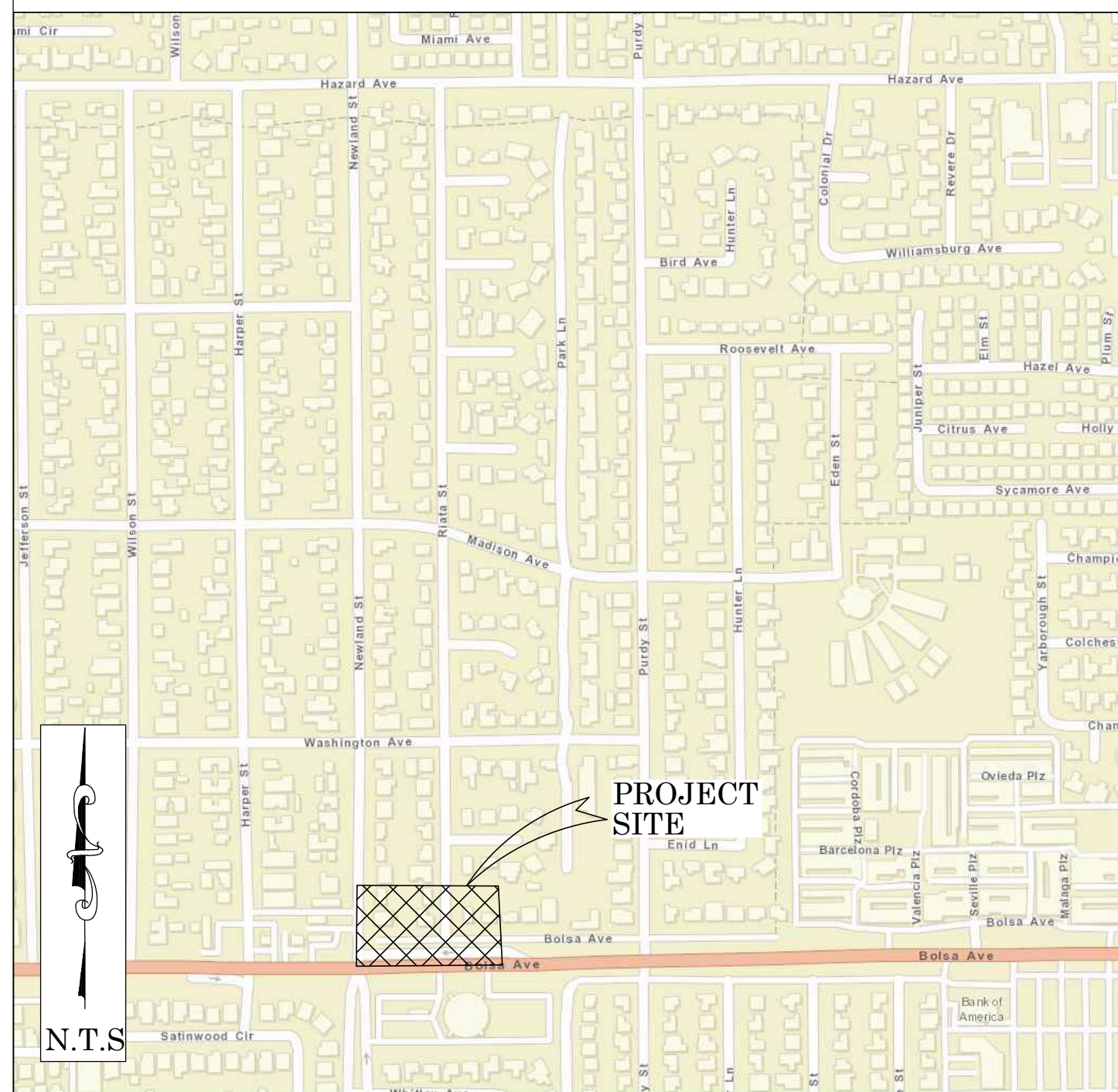
KEVIN HILLS, COUNTY SURVEYOR

MIDWAY CITY, BOLSA FRONTAGE ROAD



ROAD MAINTENANCE

LOCATION MAP



BASIS OF BEARINGS

THE BASIS OF BEARINGS FOR THIS SURVEY IS BASED ON THE CALIFORNIA COORDINATE SYSTEM (CCS83), ZONE VI, NAD 83, OCS (2017.50) EPOCH ADJUSTMENT, AS DETERMINED LOCALLY BY A LINE BETWEEN CONTINUOUS GLOBAL POSITIONING STATIONS CGPS STATIONS (FVPK) AND (BLSA) BEING NORTH 28°33'39" WEST AS DERIVED FROM THE COORDINATES PUBLISHED BY THE CALIFORNIA SPATIAL REFERENCE CENTER (CSRC) ALONG WITH DATA SHEETS ON FILE IN THE OFFICE OF THE ORANGE COUNTY SURVEYOR.

HORIZONTAL DATUM

COORDINATES SHOWN ARE BASED ON THE CALIFORNIA COORDINATE SYSTEM (CCS83), ZONE VI, NAD 83, OCS (2017.50) EPOCH ADJUSTMENT.

ALL DISTANCES SHOWN ARE GRID, UNLESS OTHERWISE NOTED. TO OBTAIN GROUND DISTANCES MULTIPLY GRID BY A COMBINED FACTOR OF 1.00001629.

THIS COMBINATION FACTOR WAS DERIVED BY HOLDING POINT 839
N: 2220195.172' E: 6036111.519' EL = 42.53'
ALL DISTANCES ARE BASED ON THE U.S. SURVEY FOOT.

VERTICAL DATUM

O.C.S. BM. 1G-131-69 ELEV. = 51.099' YEAR LEVELED: 2005
NAVD 1988 (O.C.S. 1995 ADJUSTMENT)

DESCRIPTION: DESCRIBED BY OCS 2002- FOUND 3 3/4" OCS ALUMINUM BENCHMARK DISK STAMPED "1G-131-69", SET IN THE TOP OF A 4 IN. BY 4IN. CONCRETE POST. MONUMENT IS LOCATED IN THE NORTHEAST CORNER OF THE INTERSECTION OF MAGNOLIA STREET AND HAZARD AVENUE 42.5 FT. EAST OF THE CENTERLINE OF MAGNOLIA STREET AND 88 FT. NORTH OF THE CENTERLINE OF HAZARD AVENUE. MONUMENT IS SET LEVEL WITH THE SIDEWALK.

NOTES

THE SURVEY INFORMATION SHOWN HEREON IS TO BE USED FOR TOPOGRAPHIC RELATIONSHIPS ONLY AND IS NOT INTENDED FOR LAND ACQUISITION.

SHEET INDEX

| SHEET | NO. | DESCRIPTION |
|-------|-----|-----------------|
| 1 | 1 | TITLE SHEET |
| 2-4 | 2-4 | BOUNDARY MAP |
| 5 | 5 | TOPOGRAPHIC MAP |
| 6 | 6 | PROFILE |

BASIS OF STATIONING

THE BASIS FOR STATIONING FOR THE ALIGNMENT AND PROFILE SHOWN HEREIN WAS DEVELOPED HOLDING A STATION OF 10+00 AT THE W'LY END OF THE EXISTING CONCRETE FLOWLINE OF THE N'LY SIDE OF BOLSA AVENUE FRONTAGE ROAD AND INCREASING E'LY AS SHOWN ON SHEET 4.

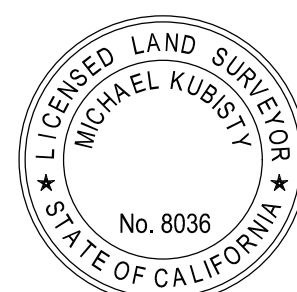
PURPOSE OF SURVEY

THE PURPOSE OF THE SURVEY IS TO PROVIDE A TOPOGRAPHIC MAP AND RIGHT OF WAY ESTABLISHMENT FOR THIS PORTION OF BOLSA AVENUE.

SENIOR LAND SURVEYOR'S CERTIFICATE:

THIS MAP CORRECTLY REPRESENTS A SURVEY MADE BY ME OR UNDER MY DIRECTION IN CONFORMANCE WITH REQUIREMENTS OF THE PROFESSIONAL LAND SURVEYOR'S ACT; THIS 8 DAY OF JULY, 2021.

MICHAEL KUBISTY, PLS. SENIOR LAND SURVEYOR



DEPUTY COUNTY SURVEYOR'S STATEMENT:

THIS MAP HAS BEEN EXAMINED IN ACCORDANCE WITH THE PROFESSIONAL LAND SURVEYOR'S ACT; THIS 8 DAY OF JULY, 2021.

WADE WEAVER, PLS. DEPUTY COUNTY SURVEYOR



U.S. Survey Foot

OC Public Works
OC Survey/Field Services
Boundary Analysis & Mapping

FD CGPS "FVPK"
N: 2188769.57'
E: 6048756.26'
THIS IS AS CONTINUOUS GPS STATION (CGPS) AND IS PART OF THE CALIFORNIA SPATIAL REFERENCE NETWORK (CSRN). FROM WHICH DATA CAN BE DOWNLOADED HERE: [HTTP://SOPACSRC.UCSD.EDU/](http://sopacsrc.ucsd.edu/)

TOPOGRAPHIC MAPPING PROJECT

| COUNTY OF ORANGE OC PUBLIC WORKS OC SURVEY/FIELD SERVICES/BOUNDARY ANALYSIS & MAPPING | | | |
|--|------|------------------------|---------------------|
| MIDWAY CITY, BOLSA FRONTAGE ROAD ROAD MAINTENANCE | | | |
| TITLE SHEET | | | |
| PROJECT LIMITS: PORTION OF BOLSA FRONTAGE ROAD FROM 100' E'LY OF RIATA TO 300' W'LY OF RIATA TO CUL-DE-SAC | | | |
| DATE OF SURVEY: 5/20/2021 | | BY: T. LOFGREEN & CREW | |
| MAPPING | | BY: R. BELTRAN | |
| OFFICE CHECK | | BY: M. KUBISTY, PLS. | |
| FIELD CHECK | | BY: T. LOFGREEN & CREW | |
| SCALE: N.T.S. | | W.O. #ER19104 | FILE #1920WP-OPD027 |
| FILE: MIDWAY CITY AT BOLSA_TOPO_2021.DWG | | | |
| MARK | DATE | ITEM | SHEET NO. |
| REVISIONS | | | 1 of 6 |

ESTABLISHMENT NOTES

- A

ESTABLISHED THE CENTERLINE OF BOLSA AVE. BY HOLDING A LINE BETWEEN MONUMENTS B AND I6
- B

SEARCHED FOUND NOTHING, ESTABLISHED THE CENTERLINE INTERSECTION OF HAZARD AVE. AND NEWLAND ST. BY TIES PER (R16), (R5) & (R3).
- C

ESTABLISHED THE CENTERLINE OF NEWLAND ST. BY HOLDING A LINE BETWEEN ESTABLISHMENT B AND MONUMENT 2
- D

ESTABLISHED BY TIES PER (R14) ACCEPTED AS POINT ON CENTERLINE PURDY ST. (S00°26'49"W 0.04') FROM THE INTERSECTION OF HAZARD AVE. AND PURDY ST. ESTABLISHED INTERSECTION BY INTERSECTING ESTABLISHMENTS C AND F
- E

ESTABLISHED THE CENTERLINE OF HAZARD AVE. BY HOLDING A LINE BETWEEN ESTABLISHMENT B AND MONUMENT I5
- F

ESTABLISHED THE CENTERLINE OF PURDY ST. BY HOLDING A LINE BETWEEN MONUMENT I1 AND ESTABLISHMENT C
- G

ESTABLISHED THE CENTERLINE OF RIATA ST. HOLDING A LINE E'LY OF AND PARALLEL WITH LINE ESTABLISHMENT C S'LY FROM MONUMENT 9
- H

SEARCHED FOUND NOTHING, ESTABLISHED THE CENTERLINE INTERSECTION OF RIATA ST. AND BOLSA AVE. BY THE INTERSECTION OF LINE ESTABLISHMENTS A AND C
- I

SEARCHED FOUND NOTHING, ESTABLISHED THE CENTERLINE INTERSECTION OF MADISON AVE. AND NEWLAND ST. BY TIES PER (R21).
- J

SEARCHED FOUND NOTHING, ESTABLISHED THE CENTERLINE INTERSECTION OF WASHINGTON AVE. AND NEWLAND ST. BY TIES PER (R10).
- K

ESTABLISHED THE CENTERLINE OF WASHINGTON AVE. BY HOLDING A LINE BETWEEN ESTABLISHMENT D AND MONUMENT 5
- L

SEARCHED FOUND NOTHING, ESTABLISHED THE CENTERLINE INTERSECTION OF RIATA ST. AND WASHINGTON AVE. BY THE INTERSECTION OF LINE ESTABLISHMENTS C AND K
- M

SEARCHED FOUND NOTHING, ESTABLISHED THE CENTERLINE INTERSECTION OF WASHINGTON AVE. AND PURDY ST. BY THE INTERSECTION OF LINE ESTABLISHMENT F AND THE E'LY PROLONGATION OF LINE ESTABLISHMENT K SE'LY FROM MONUMENT 5
- O

ESTABLISHED THE CENTERLINE OF MADISON AVE. BY HOLDING A LEAST SQUARE ADJUSTMENT USING RECORD COURSES PER (R1) BETWEEN ESTABLISHMENT I AND MONUMENT 3
- P

SEARCHED FOUND NOTHING, ESTABLISHED THE CENTERLINE INTERSECTION OF MADISON AVE. AND RIATA ST. BY THE INTERSECTION OF LINE ESTABLISHMENTS C AND D
- Q

ESTABLISHED THE CENTERLINE INTERSECTION OF MADISON AVE. AND PURDY ST. BY THE INTERSECTION OF LINE ESTABLISHMENTS D AND F
- R

ESTABLISHED THE N'LY RIGHT OF WAY OF BOLSA AVE. BY HOLDING A RECORD DISTANCE OF 96' PER (R1), N'LY OF AND PARALLEL WITH ESTABLISHMENT A
- S

ESTABLISHED THE E'LY RIGHT OF WAY OF NEWLAND AVE. BY HOLDING A RECORD DISTANCE OF 40' PER (R1), E'LY OF AND PARALLEL WITH ESTABLISHMENT C
- T

ESTABLISHED THE NE'LY RIGHT OF WAY OF BOLSA AVE. AND NEWLAND ST. BY HOLDING A RECORD RADIUS OF 13' PER (R1), TANGENT TO LINE ESTABLISHMENTS R AND S
- U

ESTABLISHED THE S'LY RIGHT OF WAY OF WASHINGTON ST. BY HOLDING A RECORD DISTANCE OF 30' PER (R1), S'LY OF AND PARALLEL WITH ESTABLISHMENT K
- V

ESTABLISHED THE SE'LY RIGHT OF WAY OF WASHINGTON AVE. AND NEWLAND ST. BY HOLDING A RECORD RADIUS OF 13' PER (R1), TANGENT TO LINE ESTABLISHMENTS D AND S
- W

ESTABLISHED THE W'LY RIGHT OF WAY OF RIATA ST. BY HOLDING A RECORD DISTANCE OF 25' PER (R1), W'LY OF AND PARALLEL WITH ESTABLISHMENT C
- X

ESTABLISHED THE SW'LY RIGHT OF WAY OF WASHINGTON AVE. AND RIATA ST. BY HOLDING A RECORD RADIUS OF 13' PER (R1), TANGENT TO LINE ESTABLISHMENTS I AND W
- Y

ESTABLISHED THE E'LY RIGHT OF WAY OF RIATA ST. BY HOLDING A RECORD DISTANCE OF 25' PER (R1), E'LY OF AND PARALLEL WITH ESTABLISHMENT C
- Z

ESTABLISHED THE SE'LY RIGHT OF WAY OF WASHINGTON AVE. AND RIATA ST. BY HOLDING A RECORD RADIUS OF 13' PER (R1), TANGENT TO LINE ESTABLISHMENTS I AND Y
- A2

ESTABLISHED THE NW'LY RIGHT OF WAY OF BOLSA AVE. AND RIATA ST. BY HOLDING A RECORD RADIUS OF 13' PER (R1), TANGENT TO LINE ESTABLISHMENTS R AND W
- A5

ESTABLISHED THE NE'LY RIGHT OF WAY OF BOLSA AVE. AND RIATA ST. BY HOLDING A RECORD RADIUS OF 13' PER (R1), TANGENT TO LINE ESTABLISHMENTS R AND Y
- A0

ESTABLISHED THE CENTERLINE OF MAGNOLIA STREET BY HOLDING A LINE BETWEEN MONUMENTS I5 AND I6

MONUMENT NOTES

- 1

FOUND SPIKE AND WASHER STAMPED "O.C.S. 0193R1 01-01", PER (R8), FLUSH IN AC, ACCEPTED AS CENTERLINE INTERSECTION OF BOLSA AVE. AND PURDY ST.
- 2

FOUND HEX BAR PER (R6) & (R7), DOWN 1.7' IN O.C.S. WELL MONUMENT, ACCEPTED AS CENTERLINE INTERSECTION OF BOLSA AVE. AND NEWLAND ST. PER (R1).
- 3

FOUND SPIKE AND WASHER STAMPED "O.C.S.", PER (R9), DOWN 0.1' IN AC. S89°34'09"E 0.05' FROM INTERSECTION OF MADISON AVE. AND PURDY ST. ACCEPTED AS A POINT ON CENTERLINE OF MADISON AVE.
- 5

FOUND SPIKE AND WASHER STAMPED "O.C.S.", PER (R12), FLUSH IN AC. ACCEPTED AS A POINT ON CENTERLINE OF WASHINGTON AVE.
- 6

FOUND SPIKE (NO WASHER) IN LIEU OF SPIKE AND WASHER STAMPED "O.C.S." PER (R16), DOWN 0.2' IN AC. DISTURBED (BENT) SHOT BASE ACCEPTED AS A POINT ON CENTERLINE OF PURDY ST.
- 7

FOUND GEAR SPIKE AND WASHER STAMPED "RCE 23956", PER (R20), FLUSH IN AC. ACCEPTED AS A POINT ON CENTERLINE OF HAZARD AVE.
- 8

FOUND GEAR SPIKE AND WASHER STAMPED "RCE 23956" PER (R20), FLUSH IN AC. ACCEPTED AS A POINT ON CENTERLINE OF HAZARD AVE.
- 9

FOUND GEAR SPIKE AND WASHER STAMPED "LS 6970" PER (R15), FLUSH IN AC. ACCEPTED AS CENTERLINE INTERSECTION OF RIATA ST. AND HAZARD AVE.
- 10

FOUND SPIKE AND WASHER (ILLEGIBLE) PER (R16), DOWN 0.25' IN AC. N89°32'17"W 0.07' FROM LINE ESTABLISHMENT C
- 11

FOUND SPIKE AND WASHER STAMPED "O.C.S." PER (R22) FLUSH IN AC. ACCEPTED AS A POINT ON CENTERLINE OF BOLSA AVE.
- 12

FOUND LEAD, TACK AND TAG STAMPED "LS 6970" PER (R14) FLUSH IN TC. ACCEPTED AS TIE.
- 13

FOUND LEAD, TACK AND TAG STAMPED "OCS TIE" PER (R21) FLUSH IN TC. ACCEPTED AS TIE.
- 14

FOUND LEAD, TACK AND TAG STAMPED "OCS TIE" PER (R10) FLUSH IN TC. ACCEPTED AS TIE.
- 15

FOUND GEAR SPIKE AND WASHER STAMPED "LS 5411" PER (R23) FLUSH IN AC. ACCEPTED AS CENTERLINE INTERSECTION OF HAZARD AVENUE AND MAGNOLIA STREET.
- 16

FOUND HEX BAR DN. 0.7' PER (R24) IN AC WELL MONUMENT. ACCEPTED AS CENTERLINE INTERSECTION OF BOLSA AVENUE AND MAGNOLIA STREET.

| LINE TABLE | | | |
|------------|-------------|-------------------|-----------------|
| LINE # | BEARING | MEASURED DISTANCE | RECORD DISTANCE |
| L1 | N89°30'03"W | 194.97' | (195.00' R1) |
| L2 | N89°32'29"W | 194.97' | (195.00' R1) |
| L3 | N89°34'09"W | 47.97' | (47.97' R1) |
| L4 | N89°32'16"W | 45.00' | (45.00' R1) |
| L5 | N00°26'49"E | 40.00' | (40.00' R2) |
| L7 | N00°27'44"E | 43.00' | (43.00' R1) |
| L8 | N89°32'16"W | 25.00' | (25.00' R1) |
| L9 | N89°32'16"W | 25.00' | (25.00' R1) |
| L10 | N00°27'44"E | 43.00' | (43.00' R1) |
| L11 | N89°32'16"W | 40.00' | (40.00' R1) |
| L12 | N00°27'44"E | 109.03' | (109.00' R1) |
| L13 | N89°32'16"W | 25.00' | (25.00' R1) |
| L14 | N89°32'16"W | 25.00' | (25.00' R1) |
| L15 | N89°32'16"W | 40.00' | (40.00' R1) |
| L16 | N00°27'44"E | 108.96' | (109.00' R1) |
| L17 | N89°33'16"W | 137.93' | (137.94' R19) |

| CURVE TABLE | | | | | | |
|-------------|-----------|--------|--------|----------------|---------------|---------------|
| CURVE # | DELTA | RADIUS | LENGTH | RECORD DELTA | RECORD RADIUS | RECORD LENGTH |
| C1 | 90°02'13" | 13.00' | 20.43' | 89°57'45" (R1) | 13.00' (R1) | 20.41' (R1) |
| C2 | 89°57'47" | 13.00' | 20.41' | 90°00'00" (R1) | 13.00' (R1) | 20.42' (R1) |
| C3 | 89°59'48" | 13.00' | 20.42' | 90°00'00" (R1) | 13.00' (R1) | 20.42' (R1) |
| C4 | 90°00'12" | 13.00' | 20.42' | 90°02'15" (R1) | 13.00' (R1) | 20.42' (R1) |
| C5 | 89°59'48" | 13.00' | 20.42' | 90°00'00" (R1) | 13.00' (R1) | 20.42' (R1) |

| CURVE TABLE | | | | | | |
|-------------|-----------|---------|---------|----------------|---------------|---------------|
| CURVE # | DELTA | RADIUS | LENGTH | RECORD DELTA | RECORD RADIUS | RECORD LENGTH |
| C6 | 89°57'47" | 13.00' | 20.41' | 89°57'46" (R1) | 13.00' (R1) | 20.42' (R1) |
| C7 | 23°30'45" | 999.98' | 410.36' | 23°31'00" (R1) | 1000.00' (R1) | 410.44' (R1) |
| C8 | 23°32'38" | 999.98' | 410.91' | 23°32'00" (R1) | 1000.00' (R1) | 410.73' (R1) |
| C9 | 13°56'39" | 999.98' | 243.36' | 13°56'45" (R1) | 1000.00' (R1) | 243.40' (R1) |
| C10 | 9°34'06" | 999.98' | 166.99' | 9°34'15" (R1) | 1000.00' (R1) | 167.04' (R1) |

REFERENCES

- (R1) = TRACT NO. 2298, M.M. 82/41-45
- (R2) = TRACT NO. 3170, M.M. 95/35-38
- (R3) = O.C.S. ALIGNMENT NOTE A/5-11&12, PGS. 591-595
- (R4) = O.C.S. ALIGNMENT NOTE A/5-11&12, PGS. 582-590
- (R5) = O.C.S. ALIGNMENT NOTE A/5-11&12, PGS. 561-570
- (R6) = O.C.S. ALIGNMENT NOTE A/5-11&12, PGS. 131-133
- (R7) = CORNER RECORD, C.R. 2020-2140
- (R8) = CORNER RECORD, C.R. 2020-2142
- (R9) = CORNER RECORD, C.R. 2000-0279
- (R10) = CORNER RECORD, C.R. 2003-0846
- (R11) = CORNER RECORD, C.R. 2007-2098
- (R12) = CORNER RECORD, C.R. 2020-0768
- (R13) = CORNER RECORD, C.R. 2020-0769
- (R14) = CORNER RECORD, C.R. 2007-1473
- (R15) = CORNER RECORD, C.R. 2007-2097
- (R16) = RECORD OF SURVEY 86-1047, R.S.B. 114/11-12
- (R17) = PARCEL MAP NO. 85-327, P.M.B. 212/29-31
- (R18) = TRACT NO. 635, M.M. 27/15
- (R19) = TRACT NO. 15539, M.M. 780/5-11
- (R20) = TRACT NO. 14879, M.M. 709/35-38
- (R21) = CORNER RECORD, C.R. 2003-0837
- (R22) = CORNER RECORD, C.R. 2021-0031
- (R23) = CORNER RECORD, C.R. 2003-0903
- (R24) = CORNER RECORD, C.R. 2001-0694

BASIS OF BEARINGS

THE BASIS OF BEARINGS FOR THIS SURVEY IS BASED ON THE CALIFORNIA COORDINATE SYSTEM (CCS83), ZONE VI, NAD 83, OCS (2017.50) EPOCH ADJUSTMENT, AS DETERMINED LOCALLY BY A LINE BETWEEN CONTINUOUS GLOBAL POSITIONING STATIONS CGPS STATIONS (FVPK) AND (BLSA) BEING NORTH 28°33'39" WEST AS DERIVED FROM THE COORDINATES PUBLISHED BY THE CALIFORNIA SPATIAL REFERENCE CENTER (CSRC) ALONG WITH DATA SHEETS ON FILE IN THE OFFICE OF THE ORANGE COUNTY SURVEYOR.

HORIZONTAL DATUM

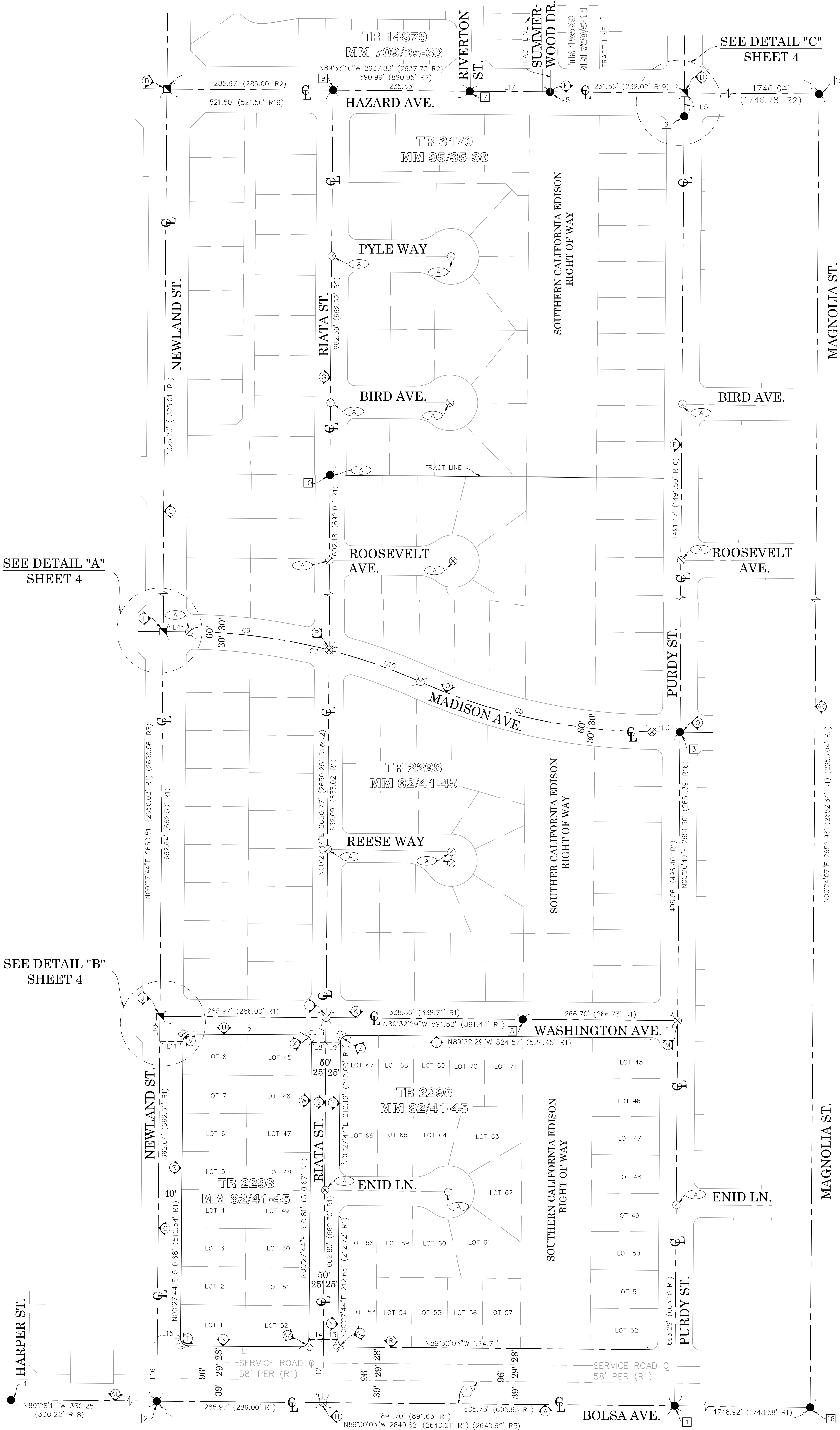
COORDINATES SHOWN ARE BASED ON THE CALIFORNIA COORDINATE SYSTEM (CCS83), ZONE VI, NAD 83, OCS (2017.50) EPOCH ADJUSTMENT.

ALL DISTANCES SHOWN ARE GRID, UNLESS OTHERWISE NOTED. TO OBTAIN GROUND DISTANCES MULTIPLY GRID BY A COMBINED FACTOR OF 1.00001629.

THIS COMBINATION FACTOR WAS DERIVED BY HOLDING POINT 839 N:2220195.172' E:6036111.519' EL = 42.53'

ALL DISTANCES ARE BASED ON THE U.S. SURVEY FOOT.

| | | | | | | |
|------------------------------------|------|------------------------|---|--|--|--|
| | | | COUNTY OF ORANGE OC PUBLIC WORKS OC SURVEY/FIELD SERVICES/BOUNDARY ANALYSIS & MAPPING | | | |
| | | | MIDWAY CITY, BOLSA FRONTAGE ROAD ROAD MAINTENANCE | | | |
| | | | BOUNDARY MAP | | | |
| | | | PROJECT LIMITS: PORTION OF BOLSA FRONTAGE ROAD FROM 100' E'LY OF RIATA TO 300' W'LY OF RIATA TO CUL-DE-SAC | | | |
| | | | DATE OF SURVEY: 5/20/2021 MAPPING | | BY: T. LOFGREEN & CREW BY: R. BELTRAN | |
| OFFICE CHECK | | BY: M. KUBISTY, PLS | | | | |
| FIELD CHECK | | BY: T. LOFGREEN & CREW | | | | |
| SCALE: 1" = 80' W.O. #ER19104 | | FILE #1920WP-OP0027 | | | | |
| MARK | DATE | ITEM | REVISIONS | | | |
| | | | FILE: MIDWAY BOLSA FRONT RD_BOUNDARY_2021.DWG | | | |

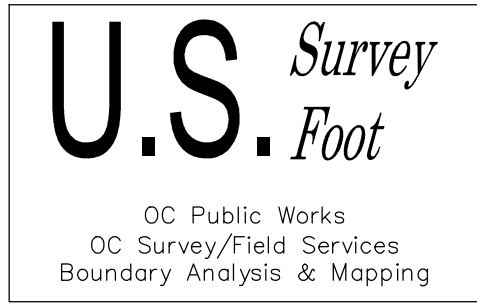
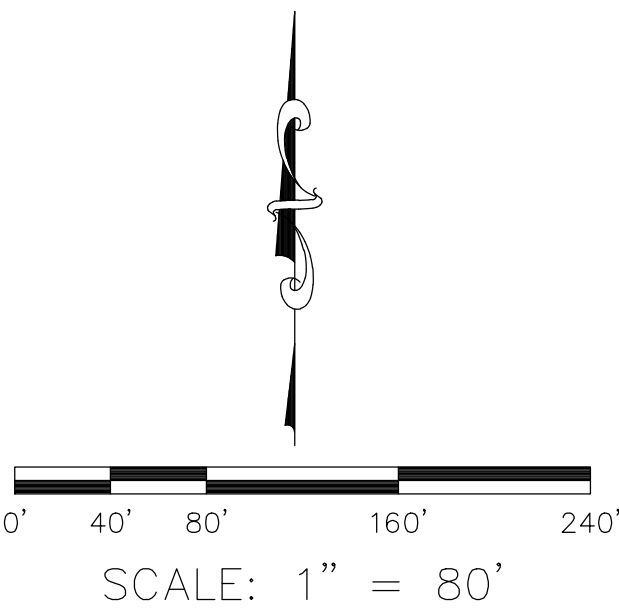


SEE DETAIL "A"
SHEET 4

SEE DETAIL "B"
SHEET 4

EASEMENT NOTES

- 1 ALL VEHICULAR ACCESS RIGHTS TO BOLSA AVENUE ARE DEDICATED TO THE COUNTY OF ORANGE (PER R1).



REFERENCES

- (R1) = TRACT NO. 2298, M.M. 82/41-45
(R2) = TRACT NO. 3170, M.M. 95/35-38
(R3) = O.C.S. ALIGNMENT NOTE A/5-11&12, PGS. 591-595
(R4) = O.C.S. ALIGNMENT NOTE A/5-11&12, PGS. 582-590
(R5) = O.C.S. ALIGNMENT NOTE A/5-11&12, PGS. 561-570
(R6) = O.C.S. ALIGNMENT NOTE A/5-11&12, PGS. 131-133
(R7) = CORNER RECORD, C.R. 2020-2140
(R8) = CORNER RECORD, C.R. 2020-2142
(R9) = CORNER RECORD, C.R. 2000-0279
(R10) = CORNER RECORD, C.R. 2003-0846
(R11) = CORNER RECORD, C.R. 2007-2098
(R12) = CORNER RECORD, C.R. 2020-0768
(R13) = CORNER RECORD, C.R. 2020-0769
(R14) = CORNER RECORD, C.R. 2007-1473
(R15) = CORNER RECORD, C.R. 2007-2097
(R16) = RECORD OF SURVEY 86-1047, R.S.B. 114/11-12
(R17) = PARCEL MAP NO. 85-327, P.M.B. 212/29-31
(R18) = TRACT NO. 635, M.M. 27/15
(R19) = TRACT NO. 15539, M.M. 780/5-11
(R20) = TRACT NO. 14879, M.M. 709/35-38
(R21) = CORNER RECORD, C.R. 2003-0837
(R22) = CORNER RECORD, C.R. 2021-0031
(R23) = CORNER RECORD, C.R. 2003-0903
(R24) = CORNER RECORD, C.R. 2001-0694

NOTES

LINEWORK HEREIN NOT SHOWN IN BOLD IS FOR GEOGRAPHICAL REPRESENTATION ONLY.

RECORD DISTANCES SHOWN HEREON ARE AS THEY APPEAR ON THE DOCUMENT OF RECORD. DISTANCES MAY BE EITHER GRID OR GROUND, AS PER SAID RECORD.

REFERENCE DOCUMENTS IN THE REFERENCE LEGEND ARE LIVE HYPERLINKS TO SAID DOCUMENT.

MONUMENT SYMBOLS CONTAIN LIVE HYPERLINKS TO IMAGES OF RESPECTIVE MONUMENT.

LEGEND

- FOUND MONUMENT AS NOTED
▣ SEARCHED, FOUND NOTHING ESTABLISHED BY TIES
⊗ S.F.N. - SEARCHED, FOUND NOTHING
○ NOT ESTABLISHED BY THIS SURVEY

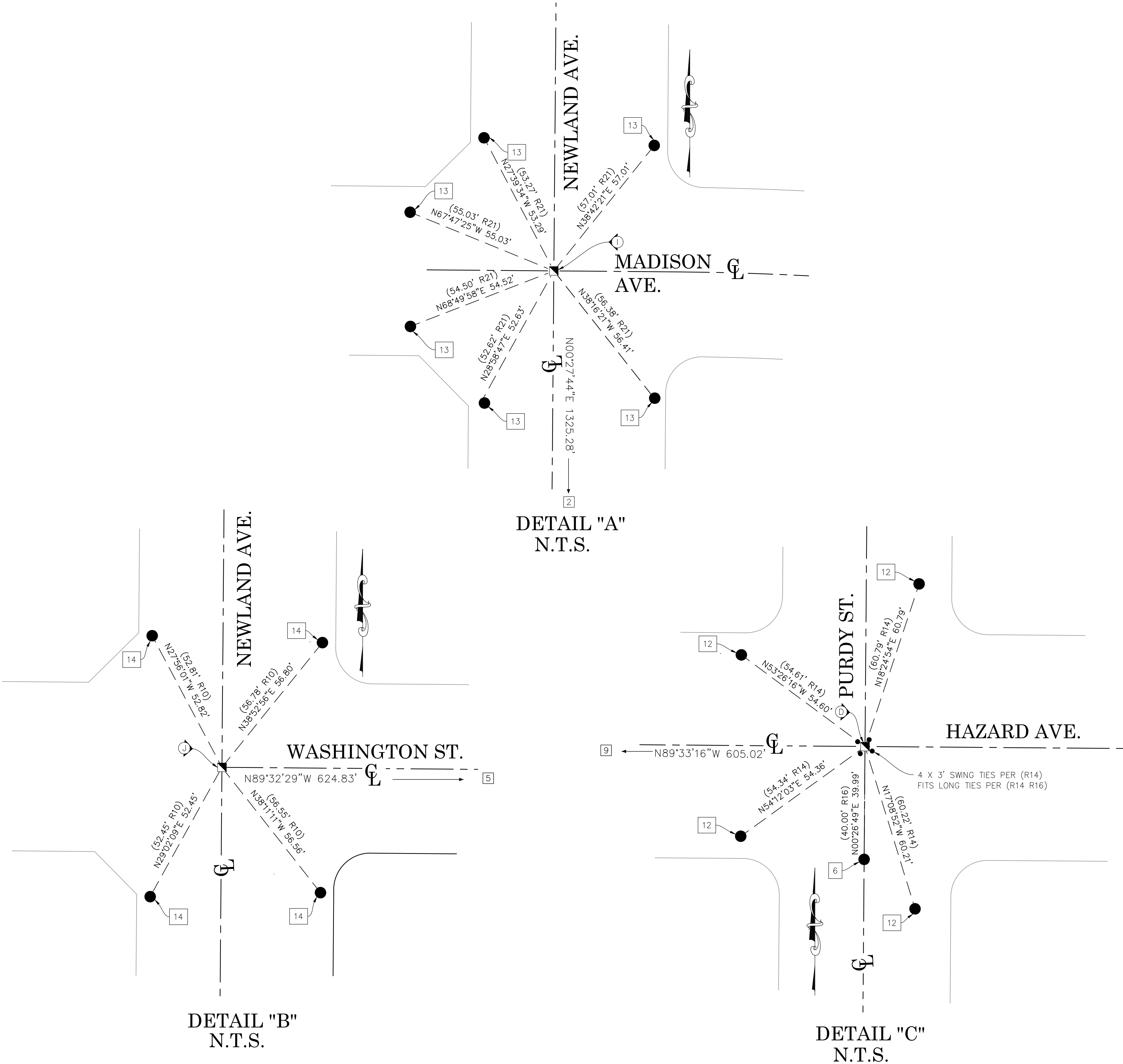
| | | |
|---|------------------------|-------------------------------|
| COUNTY OF ORANGE OC PUBLIC WORKS OC SURVEY/FIELD SERVICES/BOUNDARY ANALYSIS & MAPPING | | |
| MIDWAY CITY, BOLSA FRONTAGE ROAD ROAD MAINTENANCE | | |
| BOUNDARY MAP | | |
| PROJECT LIMITS: PORTION OF BOLSA FRONTAGE ROAD FROM 100' E'LY OF RIATA TO 300' W'LY OF RIATA TO CUL-DE-SAC | | |
| DATE OF SURVEY: 5/20/2021 | BY: T. LOFGREEN & CREW | SHEET NO. 3 of 6 |
| MAPPING | BY: R. BELTRAN | |
| OFFICE CHECK | BY: M. KUBISTY, PLS | |
| FIELD CHECK | BY: T. LOFGREEN & CREW | |
| SCALE: 1" = 80' | W.O. #ER19104 | |
| FILE # 1920WP-OP0027 | | |
| FILE: MIDWAY BOLSA FRONT RD_BOUNDARY_2021.DWG | | |

| CURVE TABLE | | | | | | | CURVE TABLE | | | | | | |
|-------------|-----------|--------|--------|----------------|---------------|---------------|-------------|-----------|---------|---------|----------------|---------------|---------------|
| CURVE # | DELTA | RADIUS | LENGTH | RECORD DELTA | RECORD RADIUS | RECORD LENGTH | CURVE # | DELTA | RADIUS | LENGTH | RECORD DELTA | RECORD RADIUS | RECORD LENGTH |
| C1 | 90°02'13" | 13.00' | 20.43' | 89°57'45" (R1) | 13.00' (R1) | 20.41' (R1) | C6 | 89°57'47" | 13.00' | 20.41' | 89°57'46" (R1) | 13.00' (R1) | 20.42' (R1) |
| C2 | 89°57'47" | 13.00' | 20.41' | 89°57'45" (R1) | 13.00' (R1) | 20.42' (R1) | C7 | 23°30'45" | 999.98' | 410.36' | 23°31'00" (R1) | 1000.00' (R1) | 410.44' (R1) |
| C3 | 89°59'48" | 13.00' | 20.42' | 90°00'00" (R1) | 13.00' (R1) | 20.42' (R1) | C8 | 23°32'38" | 999.98' | 410.91' | 23°32'00" (R1) | 1000.00' (R1) | 410.73' (R1) |
| C4 | 90°00'12" | 13.00' | 20.42' | 90°02'15" (R1) | 13.00' (R1) | 20.42' (R1) | C9 | 13°56'39" | 999.98' | 243.36' | 13°56'45" (R1) | 1000.00' (R1) | 243.40' (R1) |
| C5 | 89°59'48" | 13.00' | 20.42' | 90°00'00" (R1) | 13.00' (R1) | 20.42' (R1) | C10 | 9°34'06" | 999.98' | 166.99' | 9°34'15" (R1) | 1000.00' (R1) | 167.04' (R1) |

| LINE TABLE | | | |
|------------|-------------|-------------------|-----------------|
| LINE # | BEARING | MEASURED DISTANCE | RECORD DISTANCE |
| L1 | N89°30'03"W | 194.97' | (195.00' R1) |
| L2 | N89°32'29"W | 194.97' | (195.00' R1) |
| L3 | N89°34'09"W | 47.97' | (47.97' R1) |
| L4 | N89°32'16"W | 45.00' | (45.00' R1) |
| L5 | N00°26'49"E | 40.00' | (40.00' R2) |
| L7 | N00°27'44"E | 43.00' | (43.00' R1) |
| L8 | N89°32'16"W | 25.00' | (25.00' R1) |
| L9 | N89°32'16"W | 25.00' | (25.00' R1) |
| L10 | N00°27'44"E | 43.00' | (43.00' R1) |
| L11 | N89°32'16"W | 40.00' | (40.00' R1) |
| L12 | N00°27'44"E | 109.03' | (109.00' R1) |
| L13 | N89°32'16"W | 25.00' | (25.00' R1) |
| L14 | N89°32'16"W | 25.00' | (25.00' R1) |
| L15 | N89°32'16"W | 40.00' | (40.00' R1) |
| L16 | N00°27'44"E | 108.96' | (109.00' R1) |
| L17 | N89°33'16"W | 137.93' | (137.94' R19) |

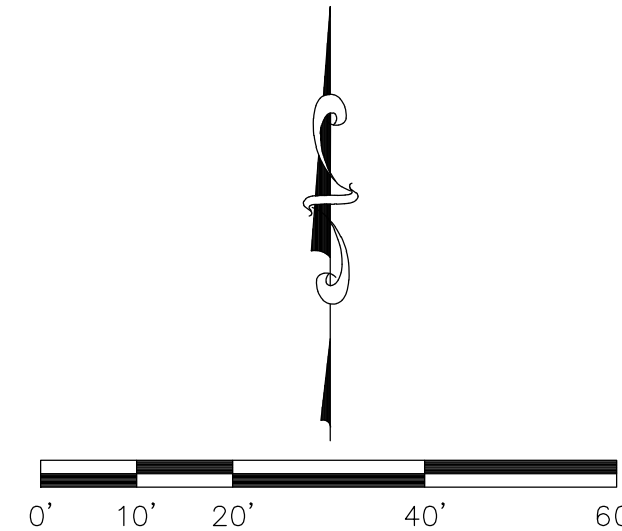
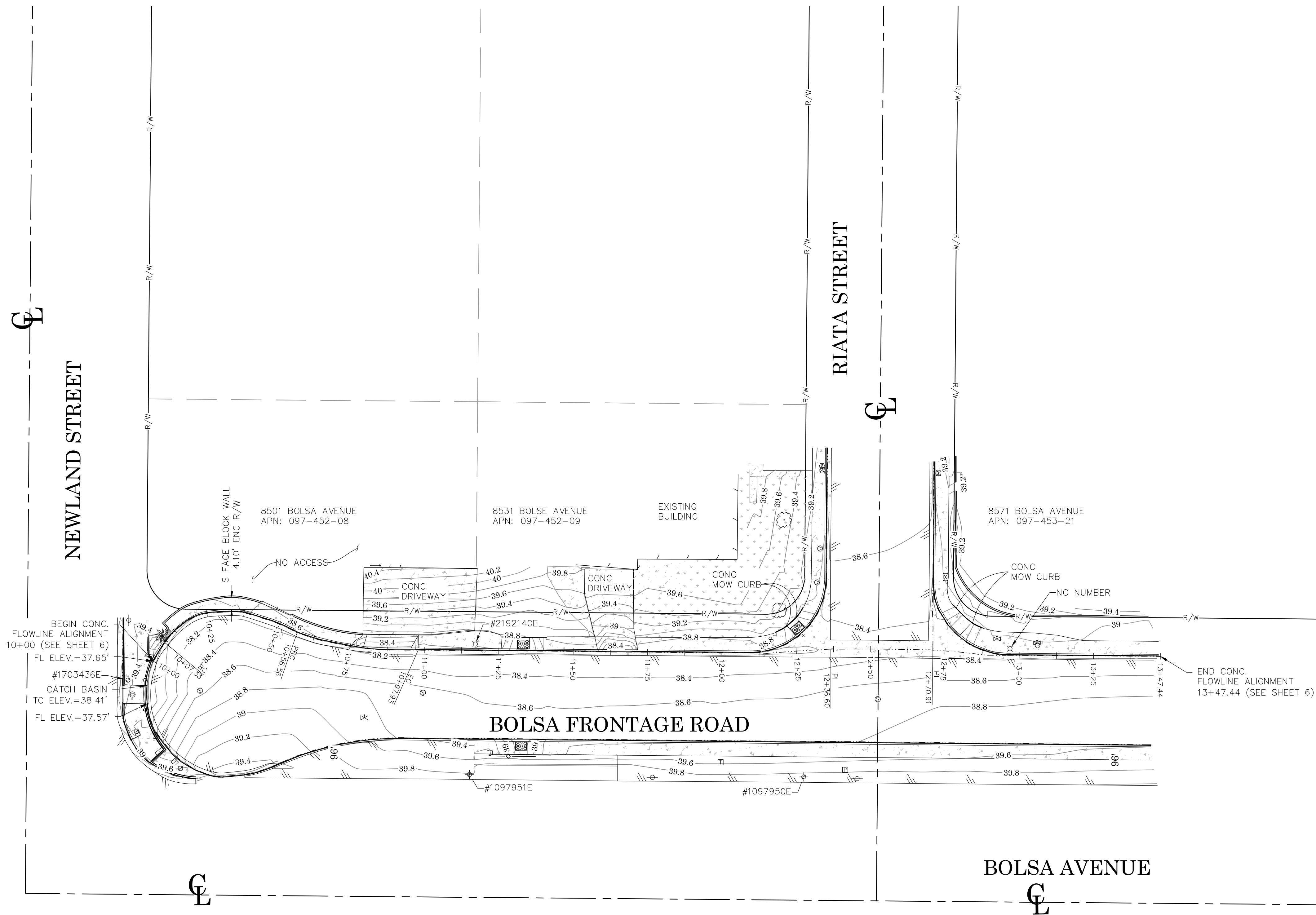
REFERENCES

- (R1) = TRACT NO. 2298, M.M. 82/41-45
(R2) = TRACT NO. 3170, M.M. 95/35-38
(R3) = O.C.S. ALIGNMENT NOTE A/5-11&12, PGS. 591-595
(R4) = O.C.S. ALIGNMENT NOTE A/5-11&12, PGS. 582-590
(R5) = O.C.S. ALIGNMENT NOTE A/5-11&12, PGS. 561-570
(R6) = O.C.S. ALIGNMENT NOTE A/5-11&12, PGS. 131-133
(R7) = CORNER RECORD, C.R. 2020-2140
(R8) = CORNER RECORD, C.R. 2020-2142
(R9) = CORNER RECORD, C.R. 2000-0279
(R10) = CORNER RECORD, C.R. 2003-0846
(R11) = CORNER RECORD, C.R. 2007-2098
(R12) = CORNER RECORD, C.R. 2020-0768
(R13) = CORNER RECORD, C.R. 2020-0769
(R14) = CORNER RECORD, C.R. 2007-1473
(R15) = CORNER RECORD, C.R. 2007-2097
(R16) = RECORD OF SURVEY 86-1047, R.S.B. 114/11-12
(R17) = PARCEL MAP NO. 85-327, P.M.B. 212/29-31
(R18) = TRACT NO. 635, M.M. 27/15
(R19) = TRACT NO. 15539, M.M. 780/5-11
(R20) = TRACT NO. 14879, M.M. 709/35-38
(R21) = CORNER RECORD, C.R. 2003-0837
(R22) = CORNER RECORD, C.R. 2021-0031
(R23) = CORNER RECORD, C.R. 2003-0903
(R24) = CORNER RECORD, C.R. 2001-0694













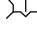


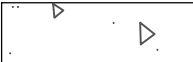
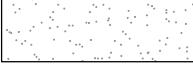

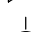

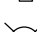

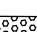


- LEGEND
- FOUND MONUMENT AS NOTED
 - ▣ SEARCHED, FOUND NOTHING ESTABLISHE BY TIES
 - ⊗ S.F.N. - SEARCHED, FOUND NOTHING
 - A NOT ESTABLISHED BY THIS SURVEY

| | | | | | |
|-----------|------|------|---|------------------------|-------------------------------|
| | | | COUNTY OF ORANGE OC PUBLIC WORKS OC SURVEY/FIELD SERVICES/BOUNDARY ANALYSIS & MAPPING | | |
| | | | MIDWAY CITY, BOLSA FRONTAGE ROAD ROAD MAINTENANCE | | |
| | | | BOUNDARY MAP | | |
| | | | PROJECT LIMITS: PORTION OF BOLSA FRONTAGE ROAD FROM 100' E'LY OF RIATA TO 300' W'LY OF RIATA TO CUL-DE-SAC | | |
| | | | DATE OF SURVEY: 5/20/2021 | BY: T. LOFGREEN & CREW | SHEET NO. 4 of 6 |
| | | | MAPPING | BY: R. BELTRAN | |
| | | | OFFICE CHECK | BY: M. KUBISTY, PLS | |
| | | | FIELD CHECK | BY: T. LOFGREEN & CREW | |
| MARK | DATE | ITEM | SCALE: 1" = 80' | W.O. #ER19104 | FILE #1920WP-OP0027 |
| REVISIONS | | | FILE: MIDWAY BOLSA FRONT RD_BOUNDARY_2021.DWG | | |



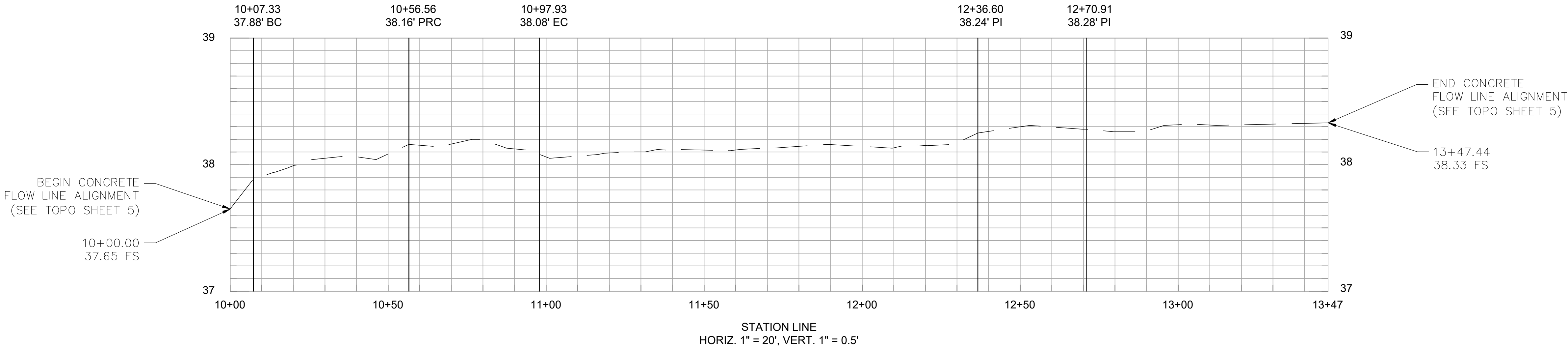
SCALE: 1" = 20'
CONTOUR INTERVAL: 0.2'

U.S. Survey
Foot
OC Public Works
OC Survey/Field Services
Boundary Analysis & Mapping

| SYMBOL | | LINE PATTERN KEY | |
|---|-------|-------------------------|---|
|  | LPL | Light Pole |  Building Outline |
|  | MHSD | Manhole, Storm Drain |  Building Overhang |
|  | MTRWA | Meter, Water |  Edge of Concrete |
|  | PBXEL | Pull Box, Traffic |  Edge of Asphalt Pavement |
|  | PSG | Pedestrian Signal Pole |  Flowline |
|  | SGL | Traffic Signal w/ Light |  Wall, Block |
|  | SNN | Sign Post | <div>AREA PATTERN KEY</div> <div> Concrete</div> <div> Dirt</div> |
|  | VLVGA | Valve Gas | |
|  | VLVWA | Valve Water | |
|  | UPWD | Utility Pole, Wood | |
|  | MTREL | Meter, Electric | |
|  | FHH | Fire Hydrant | |
|  | UGOWD | Utility Pool, Wood | |
|  | | Truncated Dome | |
|  | | Control Point | |

| | | | | | | | |
|---------------|--|--|---|--|------------------------|--|--|
| | | | COUNTY OF ORANGE OC PUBLIC WORKS OC SURVEY/FIELD SERVICES/BOUNDARY ANALYSIS & MAPPING | | | | |
| | | | MIDWAY CITY, BOLSA FRONTAGE ROAD ROAD MAINTENANCE | | | | |
| | | | TOPOGRAPHIC MAP | | | | |
| | | | PROJECT LIMITS: PORTION OF BOLSA FRONTAGE ROAD FROM 100' E'LY OF RIATA TO 300' W'LY OF RIATA TO CUL-DE-SAC | | | | |
| | | | DATE OF SURVEY: 5/20/2021 | | BY: T. LOFGREEN & CREW | | |
| MAPPING | | BY: R. BELTRAN | | | | | |
| OFFICE CHECK | | BY: M. KUBISTY, PLS | | | | | |
| FIELD CHECK | | BY: T. LOFGREEN & CREW | | | | | |
| SCALE: 1"=20' | | W.O. #ER19104 | FILE # 1920WP-OP0027 | | | | |
| REVISIONS | | FILE: MIDWAY CITY AT BOLSA_TOPO_2021.DWG | | | | | |

PROFILE OF THE EXISTING N'LY, CONCRETE FLOWLINE
 OF BOLSA AVENUE FRONTAGE ROAD



NOTE: THE ALIGNMENT FOR THIS PROFILE WAS DEVELOPED HOLDING A
 STATION OF 10+00 AT THE W'LY END OF THE EXISTING CONCRETE
 FLOWLINE OF THE N'LY SIDE OF BOLSA AVENUE FRONTAGE ROAD
 AND INCREASING E'LY AS SHOWN ON SHEET 5

U.S. *Survey*
Foot

OC Public Works
 OC Survey/Field Services
 Boundary Analysis & Mapping

| | | | | | | |
|------|------|-----------|---|--|------------------------|-------------------------------|
| | | | COUNTY OF ORANGE OC PUBLIC WORKS OC SURVEY/FIELD SERVICES/BOUNDARY ANALYSIS & MAPPING | | | |
| | | | MIDWAY CITY, BOLSA FRONTAGE ROAD ROAD MAINTENANCE | | | |
| | | | PROFILE | | | |
| | | | PROJECT LIMITS: PORTION OF BOLSA FRONTAGE ROAD FROM 100' E'LY OF RIATA TO 300' W'LY OF RIATA TO CUL-DE-SAC | | | |
| | | | DATE OF SURVEY: 5/20/2021 | | BY: T. LOFGREEN & CREW | SHEET NO. 6 of 6 |
| | | | MAPPING | | BY: R. BELTRAN | |
| | | | OFFICE CHECK | | BY: M. KUBISTY, PLS | |
| | | | FIELD CHECK | | BY: T. LOFGREEN & CREW | |
| MARK | DATE | ITEM | SCALE: 1"=20' | | W.O. #ER19104 | FILE #1920WP-OP0027 |
| | | REVISIONS | FILE: MIDWAY CITY AT BOLSA_TOPO_2021.DWG | | | |