



OC PUBLIC WORKS DEPARTMENT

SHANE SILSBY, DIRECTOR

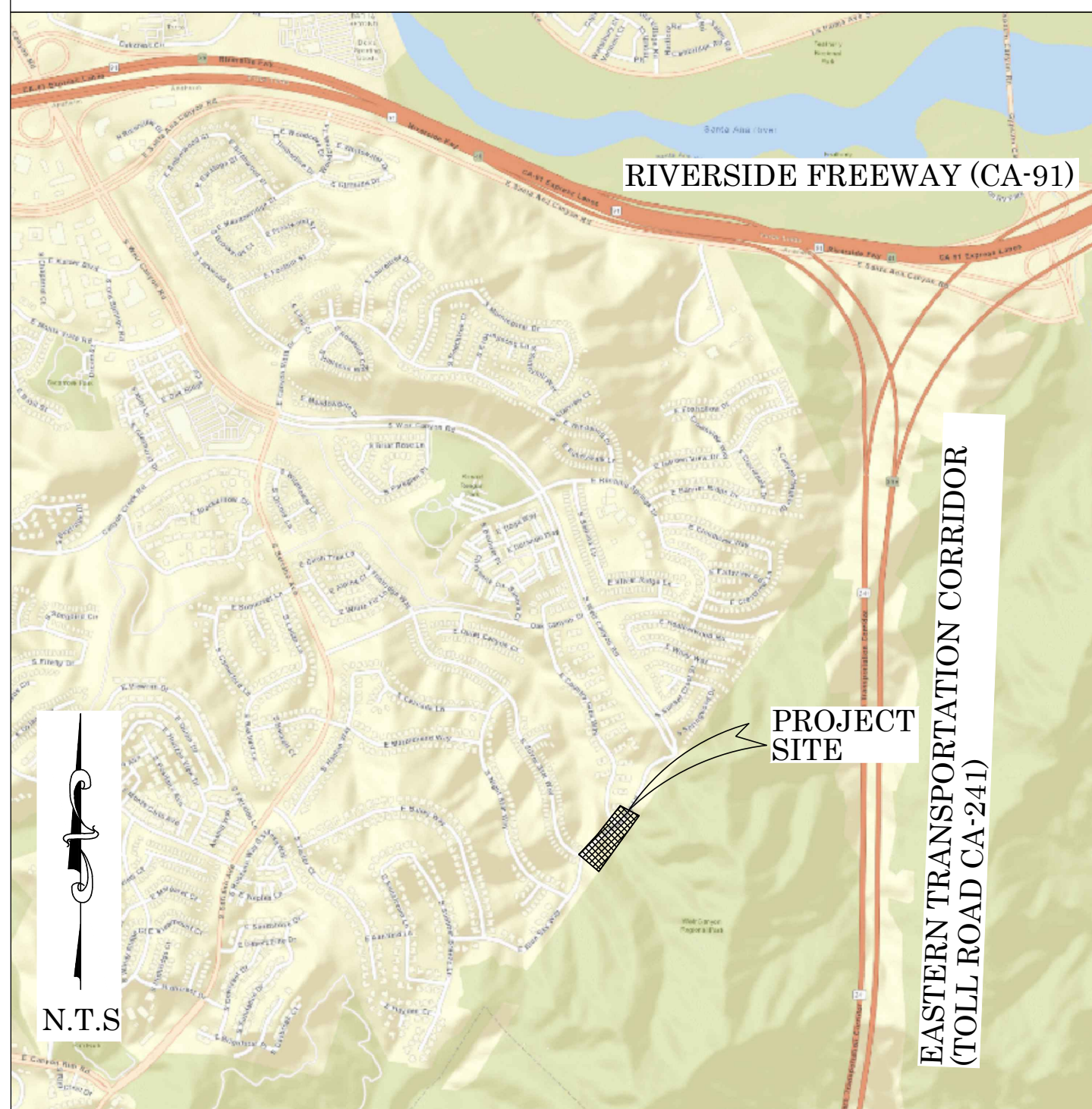
KEVIN HILLS, COUNTY SURVEYOR

BLUE SKY ROAD



BOUNDARY RELATION WITH EXISTING DRAINAGE INFRASTRUCTURE

LOCATION MAP



FOUND POINT # 3033
LEAD-BRASS NAIL AND 3/4" TAG STAMPED
"RCE 28946" ON TOP OF CURB
N: 2256249.29'
E: 6113637.72'

FOUND
2" IRON PIPE-CONCRETE PLUG & 3/4" TAG
STAMPED "RCE 14488" FLUSH WITH DIRT
N: 2253315.45'
E: 6111715.29'

FOUND
REBAR & ALUMINUM CAP STAMPED
"ETC LS 4965" FLUSH WITH DIRT
N: 2259364.96'
E: 6116084.63'

WEIR CANYON ROAD

BLUE SKY ROAD

SEE SHT 3

50° 27' 43" W

28,070.59'

N 43° 14' 25" W

3,162.50'

S 71° 36' 55" E 61,773.55'

BASIS OF BEARING

FOUND CGPS "OEOC"
N: 2225550.04'
E: 6107584.61'
THIS IS A CONTINUOUS GPS
STATION (CGPS) AND IS PART OF
THE CALIFORNIA SPATIAL
PREFERENCE NETWORK (CSRN),
FROM WHICH DATA CAN BE
DOWNLOADED HERE:
[HTTP://SOPACCSRC.UCSD.EDU/](http://SOPACCSRC.UCSD.EDU/).

BASIS OF BEARINGS

THE BASIS OF BEARINGS FOR THIS SURVEY IS BASED ON THE CALIFORNIA COORDINATE SYSTEM (CCS83), ZONE VI, NAD 83, OCS (2007.00) EPOCH ADJUSTMENT, AS DETERMINED LOCALLY BY A LINE BETWEEN CONTINUOUS GLOBAL POSITIONING STATIONS CGPS (MJP) AND (OEOC) BEING SOUTH 71°36'55" EAST AS DERIVED FROM THE COORDINATES PUBLISHED BY THE CALIFORNIA SPATIAL REFERENCE CENTER (CSRC) ALONG WITH DATA SHEETS ON FILE IN THE OFFICE OF THE ORANGE COUNTY SURVEYOR.

HORIZONTAL DATUM

COORDINATES SHOWN ARE BASED ON THE CALIFORNIA COORDINATE SYSTEM (CCS83), ZONE VI, NAD 83, OCS 2007.0 EPOCH ADJUSTMENT.

ALL DISTANCES SHOWN ARE GRID, UNLESS OTHERWISE NOTED. TO OBTAIN GROUND DISTANCES MULTIPLY GRID BY 1.00003908

ALL DISTANCES ARE BASED ON THE U.S. SURVEY FOOT.

THE COMBINATION FACTOR SHOWN HEREON WAS DERIVED FROM POINT # 3033

VERTICAL DATUM

O.C.S. BM. 3KK-32-91 ELEV. = 1022.000' YEAR LEVELED: 1991

NAVD88 (O.C.S. 1995 ADJUSTMENT)

DESCRIPTION: FOUND 3 3/4" OCS ALUMINUM BENCHMARK DISK STAMPED "3KK-32-91" LOCATED AT THE SOUTHEAST PART OF INTERSECTION SERRANO AVENUE AND SANDSTONE DRIVE, 30 FT. EASTERLY OF THE CENTERLINE OF SERRANO AVENUE, 55 FT. SOUTHERLY OF THE CENTERLINE OF SANDSTONE DRIVE, 10 FT. NORTHERLY OF A STREET STANDARD #61195D, SET AT THE NORTHWESTERLY CORNER OF A 4 FT. BY 8 FT. CATCH BASIN, 1 FT. BEHIND CURB FACE.

SHEET INDEX

SHEET	NO.	DESCRIPTION
SHEET 1	1	TITLE SHEET
SHEET 2	2	BOUNDARY MAP
SHEET 3	3	TOPOGRAPHIC MAP

PURPOSE OF SURVEY

THE PURPOSE OF THE SURVEY IS TO PROVIDE A TOPOGRAPHIC MAP AND RIGHT OF WAY ESTABLISHMENT TO DETERMINE THE BOUNDARY IN RELATION TO THE EXISTING DRAINAGE INFRASTRUCTURE AND INLET AT PARCEL #354-442-03.

FOUND CGPS "MJP"
N: 2206067.01'
E: 6166205.28'
THIS IS A CONTINUOUS GPS
STATION (CGPS) AND IS PART OF
THE CALIFORNIA SPATIAL
PREFERENCE NETWORK (CSRN),
FROM WHICH DATA CAN BE
DOWNLOADED HERE:
[HTTP://SOPACCSRC.UCSD.EDU/](http://SOPACCSRC.UCSD.EDU/).

SENIOR LAND SURVEYOR'S CERTIFICATE:

THIS MAP CORRECTLY REPRESENTS A SURVEY MADE BY ME OR UNDER MY DIRECTION IN CONFORMANCE WITH REQUIREMENTS OF THE PROFESSIONAL LAND SURVEYOR'S ACT; THIS 18 DAY OF NOVEMBER, 2019.

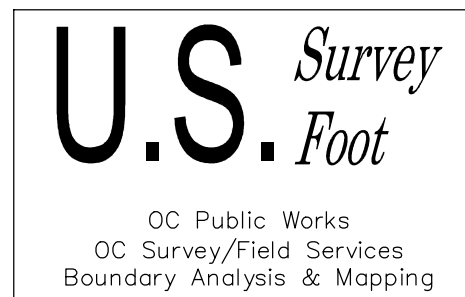
ELLIOTT MEDINA, PLS. SENIOR LAND SURVEYOR



DEPUTY COUNTY SURVEYOR'S STATEMENT:

THIS MAP HAS BEEN EXAMINED IN ACCORDANCE WITH THE PROFESSIONAL LAND SURVEYOR'S ACT; THIS 18 DAY OF NOVEMBER, 2019.

WADE WEAVER, PLS. DEPUTY COUNTY SURVEYOR



TOPOGRAPHIC MAPPING PROJECT

			COUNTY OF ORANGE OC PUBLIC WORKS OC SURVEY/FIELD SERVICES/BOUNDARY ANALYSIS & MAPPING	
			BLUE SKY ROAD DRAINAGE IMPROVEMENT PROJECT	
			TITLE SHEET	
			FROM: COUNTRY GLEN WAY	
			TO: 217' SOUTHWESTERLY OF COUNTRY GLEN WAY	
			DATE OF SURVEY: OCTOBER, 2019	BY: R. MACIAS & PARTY
			TOPOGRAPHIC MAPPING	BY: A. VU
			OFFICE CHECK	BY: E. MEDINA, PLS.
			FIELD CHECK	BY: R. MACIAS, PLS.
			SCALE: AS NOTED	W.O. #EC41403
			FILE: BLUE SKY RD_TOPO_2019.DWG	FILE NO. 1920PW-OCPO002
MARK	DATE	ITEM		
REVISIONS				
			SHEET NO. 1 of 3	

MONUMENT NOTES

- 1

FOUND 2" IRON PIPE-CONCRETE PLUG & 3/4" TAG STAMPED "RCE 14488" PER (R1)&(R2) FLUSH IN DIRT, ACCEPTED AS A POINT ON THE BOUNDARY LINE.
- 2

FOUND 2" IRON PIPE-CONCRETE PLUG & 3/4" TAG STAMPED "RCE 28946" PER (R1)&(R4), DN 0.1' IN DIRT, ACCEPTED AS A POINT ON THE N'LY RIGHT OF WAY OF WEIR CANYON.
- 3

FOUND BENT SHANK FLUSH WITH A.C. IN LIEU OF BOAT SPIKE AND WASHER STAMPED "RCE 28946" PER (R1)&(R4), MEASURED TO CENTER OF MASS, ACCEPTED AS THE CENTER LINE INTERSECTION OF WEIR CANYON ROAD AND BLUE SKY ROAD.
- 4

FOUND BOAT SPIKE & 1-1/2" WASHER STAMPED "RCE 28946" PER (R1)&(R4), FLUSH WITH A.C., ACCEPTED AS A POINT ON CENTERLINE.
- 5

FOUND BOAT SPIKE & 1-1/2" WASHER STAMPED "RCE 28946" PER (R1)&(R4), FLUSH WITH A.C., ACCEPTED AS A POINT ON CENTERLINE.
- 6

FOUND BOAT SPIKE & 1-1/2" WASHER STAMPED "RCE 28946" PER (R1)&(R4), FLUSH WITH A.C., ACCEPTED AS A POINT ON CENTERLINE.
- 7

FOUND BOAT SPIKE & 1-1/2" WASHER STAMPED "RCE 28946" FLUSH WITH A.C., ACCEPTED AS THE CENTERLINE INTERSECTION OF COUNTRY GLEN WAY AND BLUE SKY ROAD PER (R3).
- 8

FOUND BOAT SPIKE & 1-1/2" WASHER STAMPED "LS 7279" FLUSH WITH A.C. PER (R3).
- 9

FOUND BOAT SPIKE & 1-1/2" WASHER STAMPED "RCE 28946" PER (R1)&(R4), FLUSH WITH A.C., ACCEPTED AS A POINT ON CENTERLINE.
- 10

FOUND BOAT SPIKE & 1-1/2" WASHER STAMPED "RCE 28946" PER (R1)&(R4), FLUSH WITH A.C., ACCEPTED AS A POINT ON CENTERLINE.
- 11

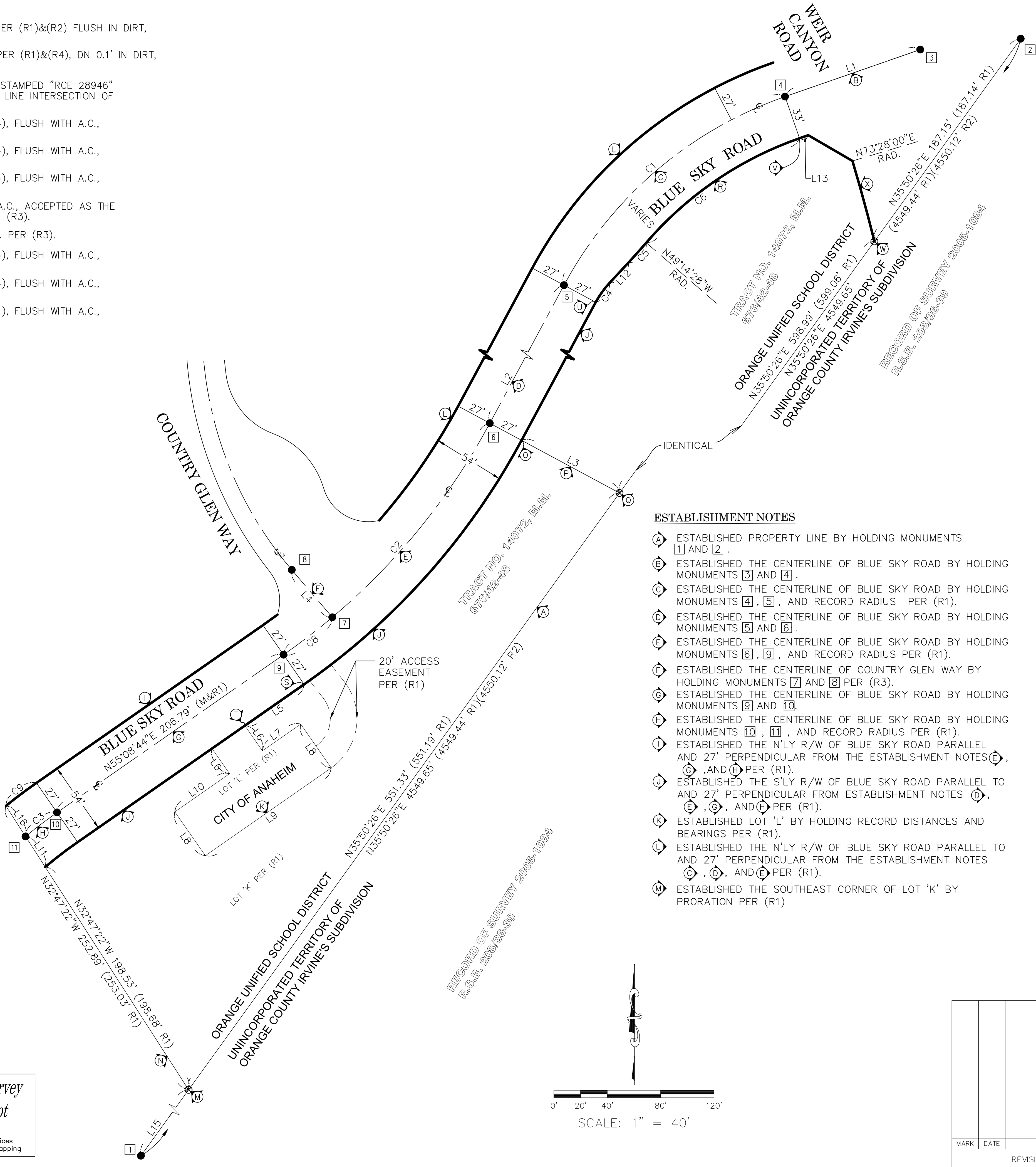
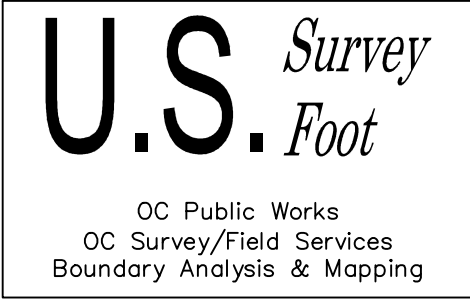
FOUND BOAT SPIKE & 1-1/2" WASHER STAMPED "RCE 28946" PER (R1)&(R4), FLUSH WITH A.C., ACCEPTED AS A POINT ON CENTERLINE.

REFERENCES

- (R1) = TRACT NO. 14072, M.M. 676/42-48
- (R2) = RECORD OF SURVEY 2005-1084, R.S.B. 208/36-39
- (R3) = CORNER RECORD, C.R. 2017-0184
- (R4) = CERTIFICATE OF CORRECTION, C.O.C. 199900280062, DATED 04/16/1999

LINE TABLE			
LINE #	BEARING	LENGTH	RECORD
L1	N70°50'01"E	107.30'	107.29' (R1)
L2	N28°15'41"E	454.66'	454.61' (R1)
L3	N61°43'00"W	83.35'	83.59' (R1)
L4	N40°31'36"W	46.69'	46.35' (R1)&(R3)
L5	S55°08'44"W	54.08'	54.08' (R1)
L6	S34°51'16"E	23.00'	23.00' (R1)
L7	N55°08'44"E	35.00'	35.00' (R1)
L8	S34°51'16"E	40.00'	40.00' (R1)
L9	S55°08'44"W	115.00'	115.00' (R1)
L10	N55°08'44"E	50.00'	50.00' (R1)
L11	S32°51'22"E	27.19'	27.19' (R1)
L12	S42°53'51"W	20.86'	20.86' (R1)
L13	N70°50'01"E	6.96'	6.96' (R1)
L14	N59°50'56"W	38.34'	38.34' (R1)
L15	N35°50'26"E	3212.19'	3212.04' (R1)
L16	N32°47'22"W	27.17'	27.16' (R1)

CURVE TABLE (RECORD DATA PER (R1))			
CURVE #	DELTA	RADIUS	LENGTH
C1	42°32'17" (42°32'24")	300.00' (300.00')	222.73' (222.74')
C2	26°51'53" (26°52'00")	500.00' (500.00')	234.44' (234.46')
C3	04°28'03" (04°28'00")	380.00' (380.00')	29.63' (29.62')
C4	14°38'10" (14°38'10")	69.50' (69.50')	17.75' (17.75')
C5	02°15'33" (02°15'47")	507.00' (507.00')	19.99' (20.03')
C6	30°10'01" (30°10'01")	267.00' (267.00')	140.58' (140.58')
C7	02°30'44" (02°30'34")	1426.00' (1426.00')	62.52' (62.45')
C8	05°16'57" (05°17'00")	500.00' (500.00')	46.10' (46.11')
C9	04°01'45" (04°02'09")	409.00' (409.00')	28.62' (28.67')
C10	04°58'23" (04°57'49")	353.00' (353.00')	30.64' (30.58')



NOTES

STREET R/W SHOWN IN BOLD ESTABLISHED BY SURVEY.

BASIS OF BEARINGS

THE BASIS OF BEARINGS FOR THIS SURVEY IS BASED ON THE CALIFORNIA COORDINATE SYSTEM (CCS83), ZONE VI, NAD 83, OCS (2007.00) EPOCH ADJUSTMENT, AS DETERMINED LOCALLY BY A LINE BETWEEN CONTINUOUS GLOBAL POSITIONING STATIONS CGPS (MJPK) AND (OEOC) BEING NORTH 71°36'55" WEST AS DERIVED FROM THE COORDINATES PUBLISHED BY THE CALIFORNIA SPATIAL REFERENCE CENTER (CSRC) ALONG WITH DATA SHEETS ON FILE IN THE OFFICE OF THE ORANGE COUNTY SURVEYOR.

HORIZONTAL DATUM

THE COORDINATES SHOWN ARE BASED ON THE CALIFORNIA COORDINATE SYSTEM OF 1983 (CCS83), ZONE VI, 1983 NORTH AMERICAN DATUM (2007.00 EPOCH, O.C.S. GPS ADJUSTMENT).

ALL DISTANCES SHOWN ARE GRID, UNLESS OTHERWISE NOTED. MULTIPLY THE GRID DISTANCE BY 1.00003908 TO OBTAIN GROUND DISTANCE.

ALL DISTANCES ARE BASED ON THE U.S. SURVEY FOOT.

LEGEND

- ⊗

SEARCHED NOT FOUND
- FOUND MONUMENT AS NOTED

ESTABLISHMENT NOTES

- A

ESTABLISHED PROPERTY LINE BY HOLDING MONUMENTS 1 AND 2 .
- B

ESTABLISHED THE CENTERLINE OF BLUE SKY ROAD BY HOLDING MONUMENTS 3 AND 4 .
- C

ESTABLISHED THE CENTERLINE OF BLUE SKY ROAD BY HOLDING MONUMENTS 4 , 5 , AND RECORD RADIUS PER (R1).
- D

ESTABLISHED THE CENTERLINE OF BLUE SKY ROAD BY HOLDING MONUMENTS 5 AND 6 .
- E

ESTABLISHED THE CENTERLINE OF BLUE SKY ROAD BY HOLDING MONUMENTS 6 , 9 , AND RECORD RADIUS PER (R1).
- F

ESTABLISHED THE CENTERLINE OF COUNTRY GLEN WAY BY HOLDING MONUMENTS 7 AND 8 PER (R3).
- G

ESTABLISHED THE CENTERLINE OF BLUE SKY ROAD BY HOLDING MONUMENTS 9 AND 10 .
- H

ESTABLISHED THE CENTERLINE OF BLUE SKY ROAD BY HOLDING MONUMENTS 10 , 11 , AND RECORD RADIUS PER (R1).
- I

ESTABLISHED THE N'LY R/W OF BLUE SKY ROAD PARALLEL AND 27' PERPENDICULAR FROM THE ESTABLISHMENT NOTES E , G , AND H PER (R1).
- J

ESTABLISHED THE S'LY R/W OF BLUE SKY ROAD PARALLEL TO AND 27' PERPENDICULAR FROM ESTABLISHMENT NOTES D , E , G , AND H PER (R1).
- K

ESTABLISHED LOT 'L' BY HOLDING RECORD DISTANCES AND BEARINGS PER (R1).
- L

ESTABLISHED THE N'LY R/W OF BLUE SKY ROAD PARALLEL TO AND 27' PERPENDICULAR FROM THE ESTABLISHMENT NOTES C , D , AND E PER (R1).
- M

ESTABLISHED THE SOUTHEAST CORNER OF LOT 'K' BY PRORATION PER (R1)

- N

ESTABLISHED THE SW'LY PROPERTY LINE OF LOT 'K' BY HOLDING ESTABLISHMENT NOTE M AND MONUMENT 11 .
- O

ESTABLISHED THE NORTHWEST CORNER OF LOT 'K' RADIAL TO AND 27' FROM MONUMENT 6 .
- P

ESTABLISHED THE NE'LY PROPERTY LINE OF LOT 'K' BY HOLDING ESTABLISHMENT NOTES O AND A .
- Q

ESTABLISHED THE NORTHEAST CORNER OF LOT 'K' BY INTERSECTION BETWEEN ESTABLISHMENT NOTE A AND THE RADIAL BEARING FROM MONUMENT 6 .
- R

ESTABLISHED THE S'LY R/W OF BLUE SKY ROAD BY LEAST SQUARE ADJUSTMENT BETWEEN ESTABLISHMENT NOTES V AND U .
- S

ESTABLISHED POINT ON NW'LY PROPERTY LINE OF LOT 'K' RADIAL TO AND 27' PERPENDICULAR FROM MONUMENT 9 .
- T

ESTABLISHED POINT IN SE'LY R/W OF BLUE SKY ROAD AS ESTABLISHED BY ESTABLISHMENT NOTE J AT RECORD DISTANCE FROM ESTABLISHMENT POINT S PER R1.
- U

ESTABLISHED POINT ON S'LY RIGHT OF WAY OF BLUE SKY ROAD RADIAL TO AND 27' PERPENDICULAR FROM MONUMENT 5 .
- V

ESTABLISHED POINT ON S'LY RIGHT OF WAY OF BLUE SKY ROAD RADIAL TO AND 33' PERPENDICULAR FROM MONUMENT 4 .
- W

ESTABLISHED POINT BY PRORATION BETWEEN ESTABLISHMENT NOTE O AND MONUMENT NOTE 2 PER (R1)
- X

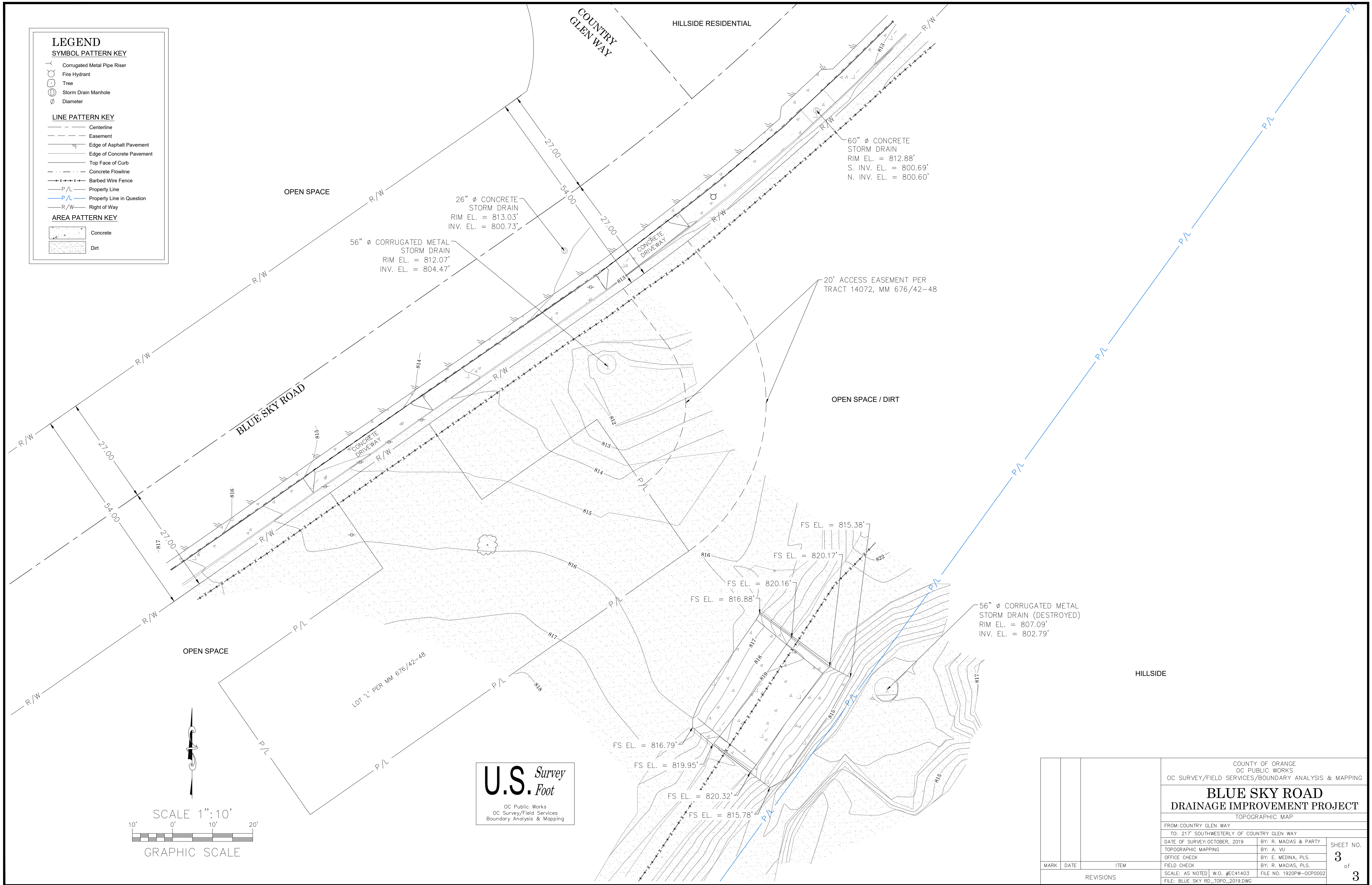
ESTABLISHED E'LY RIGHT OF WAY OF WEIR CANYON RD BY LEAST SQUARE ADJUSTMENT BETWEEN ESTABLISHMENT NOTES V AND W .

			COUNTY OF ORANGE OC PUBLIC WORKS OC SURVEY/FIELD SERVICES/BOUNDARY ANALYSIS & MAPPING				
			BLUE SKY ROAD DRAINAGE IMPROVEMENTS				
			BOUNDARY ANALYSIS				
			FROM: COUNTRY GLEN WAY TO: 217' SOUTHWESTERLY OF COUNTRY GLEN WAY				
			DATE OF SURVEY: OCTOBER 2019		BY: R. MACIAS & PARTY		SHEET NO. 2 of 3
			BOUNDARY MAPPING		BY: A. VU		
			OFFICE CHECK		BY: E. MEDINA, PLS		
			FIELD CHECK		BY: R. MACIAS, PLS		
			SCALE: AS NOTED		W.O. # EC41403		
			FILE NO. 1920PW-OCPO002		FILE: BLUE SKY ROAD_BOUNDARY_2019.DWG		
MARK	DATE	ITEM	REVISIONS				

LEGEND
SYMBOL PATTERN KEY
Corrugated Metal Pipe Riser
Fire Hydrant
Tree
Storm Drain Manhole
Diameter

LINE PATTERN KEY
Centerline
Easement
Edge of Asphalt Pavement
Edge of Concrete Pavement
Top Face of Curb
Concrete Flowline
Barbed Wire Fence
Property Line
Property Line in Question
Right of Way

AREA PATTERN KEY
Concrete
Dirt



U.S. Survey Foot
OC Public Works
OC Survey/Field Services
Boundary Analysis & Mapping

			COUNTY OF ORANGE OC PUBLIC WORKS OC SURVEY/FIELD SERVICES/BOUNDARY ANALYSIS & MAPPING	
			BLUE SKY ROAD DRAINAGE IMPROVEMENT PROJECT	
			TOPOGRAPHIC MAP	
			FROM: COUNTRY GLEN WAY	
			TO: 217' SOUTHWESTERLY OF COUNTRY GLEN WAY	
			DATE OF SURVEY: OCTOBER, 2019	BY: R. MACIAS & PARTY
			TOPOGRAPHIC MAPPING	BY: A. VU
			OFFICE CHECK	BY: E. MEDINA, PLS.
			FIELD CHECK	BY: R. MACIAS, PLS.
			SCALE: AS NOTED W.O. #EC41403	FILE NO. 1920PW-OC00002
			FILE: BLUE_SKY_RD_TOPO_2019.DWG	
MARK	DATE	ITEM		
REVISIONS				

SHEET NO.
3
of
3