



# OC PUBLIC WORKS DEPARTMENT

SHANE SILSBY, DIRECTOR

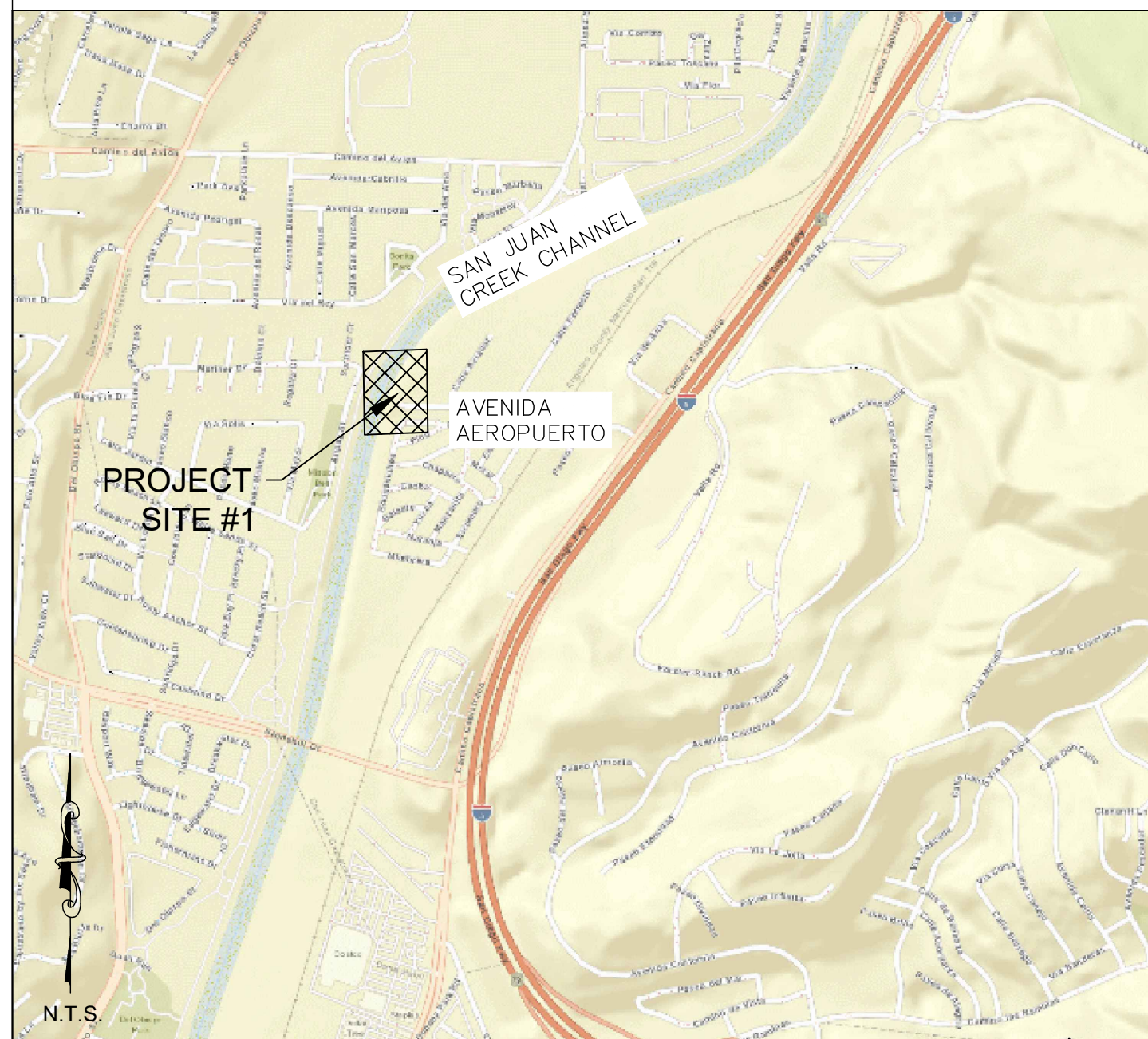
KEVIN HILLS, COUNTY SURVEYOR

## SAN JUAN CREEK CHANNEL (L01)

LIMITS: AVENIDA AEROPUERTO AT SAN JUAN CREEK CHANNEL (L01)



### LOCATION MAP



#### SENIOR LAND SURVEYOR'S CERTIFICATE:

THIS MAP CORRECTLY REPRESENTS A SURVEY MADE BY ME OR UNDER MY DIRECTION IN CONFORMANCE WITH REQUIREMENTS OF THE PROFESSIONAL LAND SURVEYOR'S ACT; THIS 20TH DAY OF SEPTEMBER, 2019.

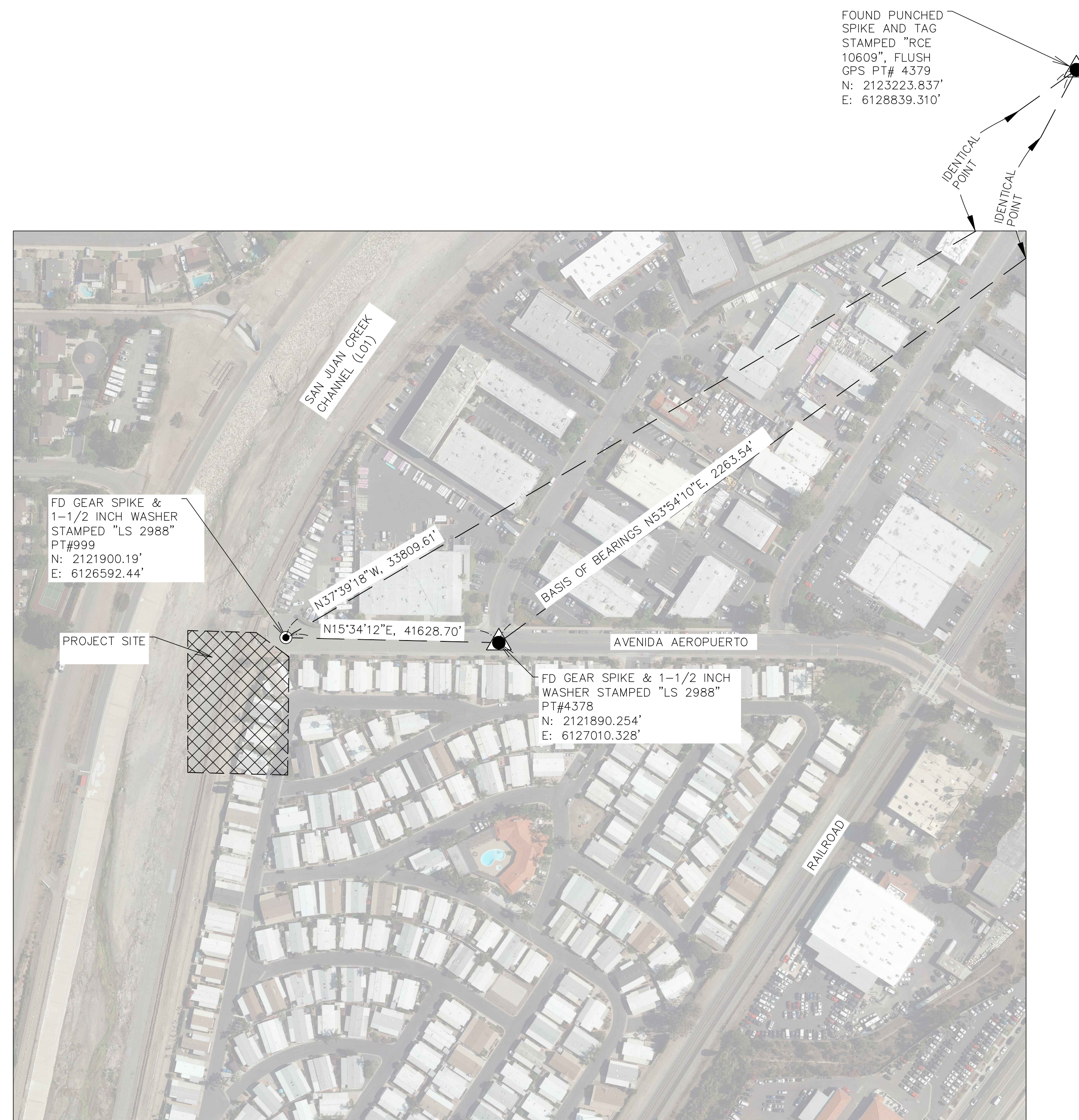
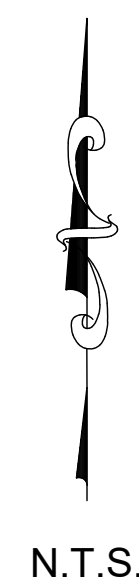
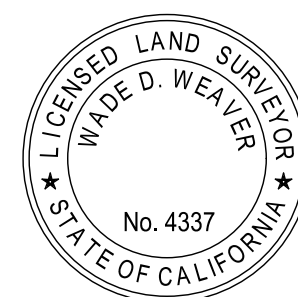
JESOM MORENO PLS SENIOR LAND SURVEYOR



#### DEPUTY COUNTY SURVEYOR'S STATEMENT:

THIS MAP HAS BEEN EXAMINED IN ACCORDANCE WITH THE PROFESSIONAL LAND SURVEYOR'S ACT; THIS 20TH DAY OF SEPTEMBER, 2019.

WADE WEAVER PLS DEPUTY COUNTY SURVEYOR



FOUND PUNCHED SPIKE AND TAG STAMPED "RCE 10609", FLUSH GPS PT# 4379 N: 2123223.837 E: 6128839.310"

IDENTICAL POINT

IDENTICAL POINT

### BASIS OF BEARINGS

THE BASIS OF BEARING FOR THIS SURVEY IS BASED ON THE CALIFORNIA COORDINATE SYSTEM (CCS83), ZONE VI, NAD 83, OCS (2007.00) EPOCH ADJUSTMENT, AS DETERMINED LOCALLY BY A LINE BETWEEN GLOBAL POSITIONING POINTS 4378 AND 4379, BEING NORTH 53°54'10" EAST AS DERIVED FROM THE COORDINATES ESTABLISHED BY DATASHEETS ON FILE IN THE OFFICE OF THE ORANGE COUNTY SURVEYOR.

### HORIZONTAL DATUM

COORDINATES SHOWN HEREON ARE BASED ON THE CALIFORNIA COORDINATE SYSTEM (CCS83), ZONE VI, 1983 NORTH AMERICAN DATUM (2007.00 EPOCH O.C.S. G.P.S. ADJUSTMENT).

ALL DISTANCES SHOWN ARE GRID, UNLESS OTHERWISE NOTED. MULTIPLY A GRID DISTANCE BY 1.0000223105 TO OBTAIN GROUND DISTANCE.

ALL DISTANCES ARE BASED ON THE U.S. SURVEY FOOT.

### VERTICAL DATUM

O.C.S. BM. F-785 ELEV. = 73.413' YEAR LEVELED: 1991 NGVD29 (O.C.S. 1995 ADJUSTMENT)

DESCRIBED BY OCS 2003 - FOUND 3 3/4" U.S. COAST AND GEODETIC SURVEY BRONZED DISK STAMPED "F 785 1946", SET IN THE TOP OF A CONCRETE BRIDGE ABUTMENT. MONUMENT IS LOCATED IN THE SOUTHWESTERLY CORNER OF THE ATCHINSO/TOPEKA AND SANTA FE RAILWAY OVERCROSSING OF SAN MATEO CREEK. GO 69 FT. NORTHERLY ALONG THE RAILWAY FROM CENTERLINE OF INTERSTATE 5 FREEWAY. GO 150' +/- WESTERLY FROM THE CENTERLINE OF CAMINO CAPISTRANO. MONUMENT IS SET 2.0 FT. BELOW THE TRACKS.

### PURPOSE OF SURVEY

THE PURPOSE OF THE SURVEY IS TO PROVIDE TOPOGRAPHIC DATA TO REESTABLISH PREVIOUS ACCESS POINT/RAMP TO THE ACCESS ROAD LOCATED AT THE TOP OF THE LEVEE ALONG THE SAN JUAN CREEK CHANNEL. THE SURVEY INFORMATION SHOWN HEREON IS TO BE USED FOR TOPOGRAPHIC RELATIONSHIPS ONLY AND IS NOT INTENDED FOR LAND ACQUISITION OR BOUNDARY PURPOSES.

### SHEET INDEX

SHEET NO.	DESCRIPTION
SHEET #1	TITLE SHEET
SHEET #2	TOPOGRAPHIC MAP- AVENIDA AEROPUERTO

**U.S. Survey Foot**

OC Public Works  
OC Survey/Field Services  
Boundary Analysis & Mapping

## TOPOGRAPHIC MAPPING PROJECT

			COUNTY OF ORANGE OC PUBLIC WORKS OC SURVEY/FIELD SERVICES/BOUNDARY ANALYSIS & MAPPING				
			SAN JUAN CREEK CHANNEL(L01)				
			TITLE SHEET				
			LOCATIONS: AVENIDA AEROPUERTO AT SAN JUAN CREEK CHANNEL (L01)				
REV NO.	DATE	ITEM	DATE OF SURVEY: 06-05-2019		BY: R.MACIAS, PLS		SHEET NO.  1 of 2
			TOPOGRAPHIC MAPPING		BY: K.AHMED		
			OFFICE CHECK		BY: J.MORENO, PLS		
			FIELD CHECK		BY: R.MACIAS, PLS		
REVISIONS			SCALE: N.T.S.	W.O.# EF16400			
			FILE: AVENIDA_AEROPUERTO_TOPO_2019.DWG				



