



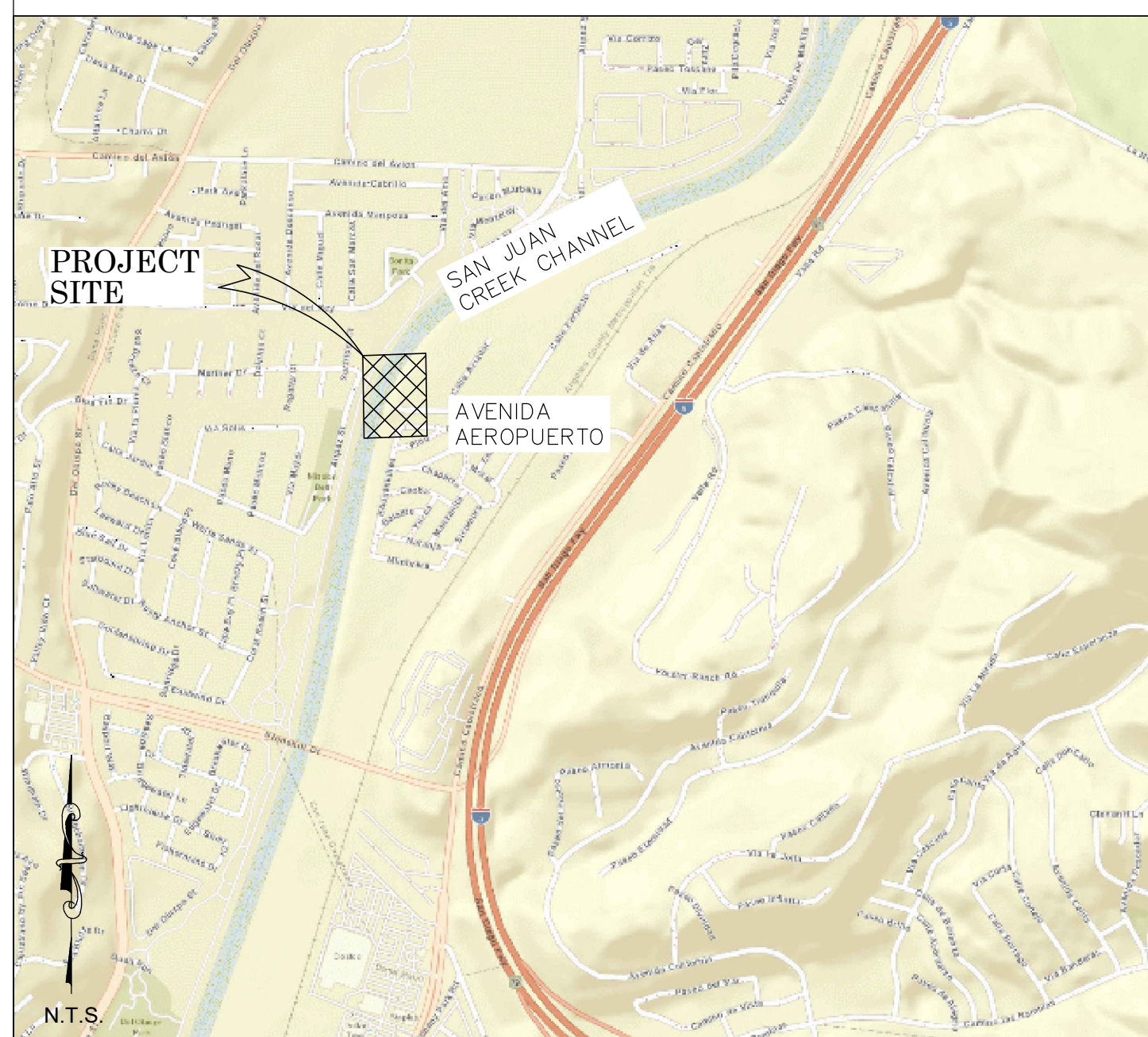
OC PUBLIC WORKS DEPARTMENT  
JAMES TREADAWAY, DIRECTOR OF OC PUBLIC WORKS  
KEVIN HILLS, COUNTY SURVEYOR



SAN JUAN CREEK CHANNEL (L01)

LIMITS: AS-BUILT OF MAINTENANCE ACCESS RAMP AT AVENIDA AEROPUERTO

LOCATION MAP



SENIOR LAND SURVEYOR'S CERTIFICATE:

THIS MAP CORRECTLY REPRESENTS A SURVEY MADE BY ME OR UNDER MY DIRECTION IN CONFORMANCE WITH REQUIREMENTS OF THE PROFESSIONAL LAND SURVEYOR'S ACT; THIS 24TH DAY OF MAY, 2021.

JESOM MORENO, PLS SENIOR LAND SURVEYOR



DEPUTY COUNTY SURVEYOR'S STATEMENT:

THIS MAP HAS BEEN EXAMINED IN ACCORDANCE WITH THE PROFESSIONAL LAND SURVEYOR'S ACT; THIS 24TH DAY OF MAY, 2021.

WADE WEAVER, PLS DEPUTY COUNTY SURVEYOR



N.T.S.



BASIS OF BEARINGS

THE BASIS OF BEARINGS FOR THIS SURVEY IS BASED ON THE CALIFORNIA COORDINATE SYSTEM (CCS83), ZONE VI, NAD 83, OCS (1991.35) EPOCH ADJUSTMENT, AS DETERMINED LOCALLY BY A LINE BETWEEN GLOBAL POSITIONING POINTS 4378 AND 4379, BEING NORTH 53°54'10" EAST AS DERIVED FROM THE COORDINATES ESTABLISHED BY DATASHEETS ON FILE IN THE OFFICE OF THE ORANGE COUNTY SURVEYOR.

HORIZONTAL DATUM

COORDINATES SHOWN HEREON ARE BASED ON THE CALIFORNIA COORDINATE SYSTEM (CCS83), ZONE VI, 1983 NORTH AMERICAN DATUM (1991.35 EPOCH O.C.S. G.P.S. ADJUSTMENT).

ALL DISTANCES SHOWN ARE GRID, UNLESS OTHERWISE NOTED. MULTIPLY A GRID DISTANCE BY 1.00003928 TO OBTAIN GROUND DISTANCE.

ALL DISTANCES ARE BASED ON THE U.S. SURVEY FOOT.

VERTICAL DATUM

O.C.S. BM. F-785 ELEV. = 73.413' YEAR LEVELED: 1991 NGVD29 (O.C.S. 1995 ADJUSTMENT)

DESCRIBED BY OCS 2003 - FOUND 3 3/4" US COAST AND GEODETIC SURVEY BRONZED DISK STAMPED "F 785 1946", SET IN THE TOP OF A CONCRETE BRIDGE ABUTMENT. MONUMENT IS LOCATED IN THE SOUTHWESTERLY CORNER OF THE ATCHINSO/TOPEKA AND SANTA FE RAILWAY OVERCROSSING OF SAN MATEO CREEK. GO 69 FT. NORTHERLY ALONG THE RAILWAY FROM CENTERLINE OF INTERSTATE 5 FREEWAY. GO 150' +/- WESTERLY FROM THE CENTERLINE OF CAMINO CAPISTRANO. MONUMENT IS SET 2.0 FT. BELOW THE TRACKS.

PURPOSE OF SURVEY

THE PURPOSE OF THE SURVEY IS TO PROVIDE A TOPOGRAPHIC AS-BUILT MAP OF THE ACCESS POINT/RAMP TO THE ACCESS ROAD LOCATED AT THE TOP OF THE LEVEE ALONG THE SAN JUAN CREEK CHANNEL. THE SURVEY INFORMATION SHOWN HEREON IS TO BE USED FOR TOPOGRAPHIC RELATIONSHIPS ONLY AND IS NOT INTENDED FOR LAND ACQUISITION OR BOUNDARY PURPOSES.

SHEET INDEX

SHEET NO.	DESCRIPTION
SHEET #1	TITLE SHEET
SHEET #2	TOPOGRAPHIC MAP- AVENIDA AEROPUERTO

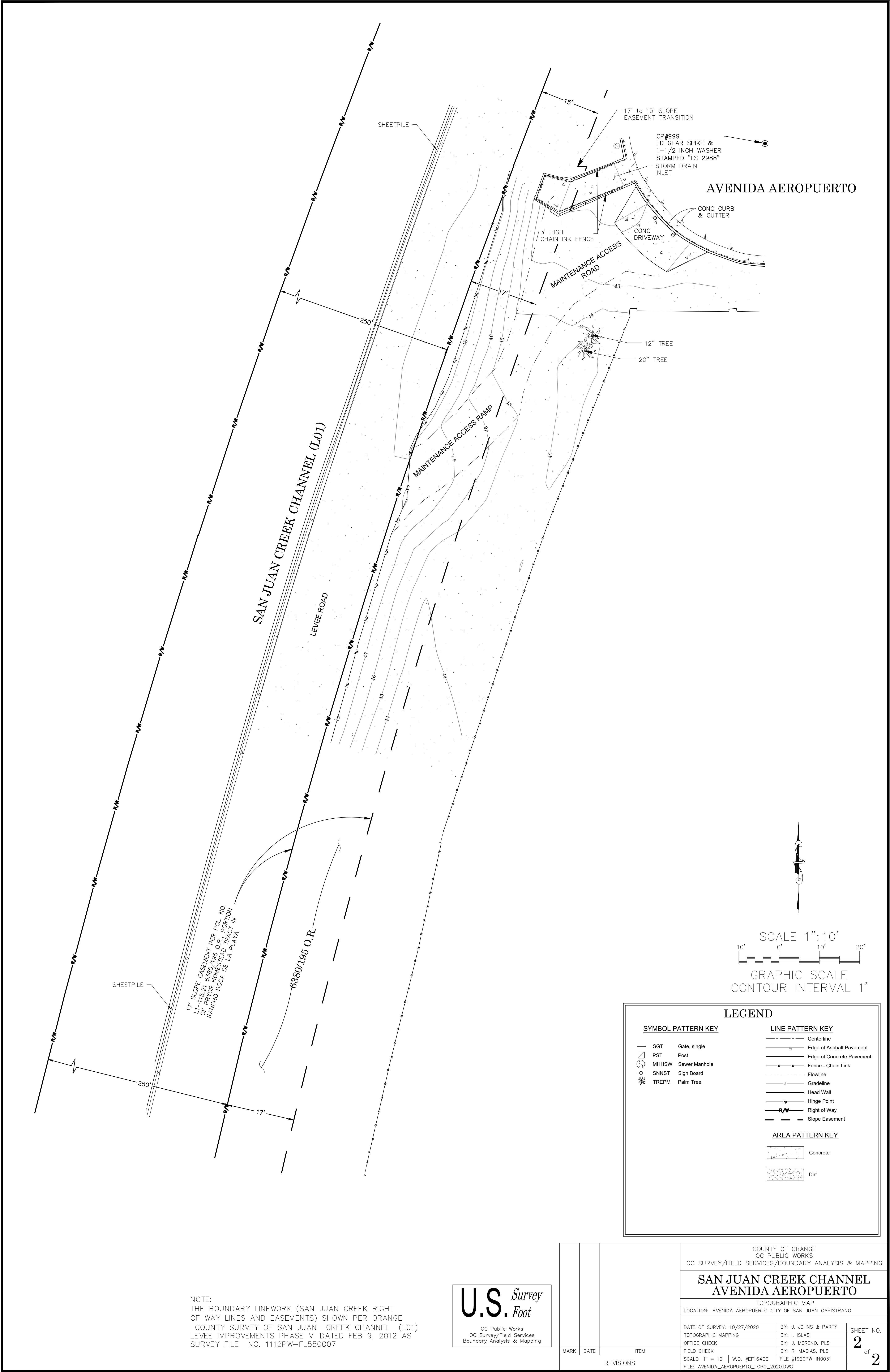
U.S. Survey Foot

OC Public Works  
OC Survey/Field Services  
Boundary Analysis & Mapping

TOPOGRAPHIC MAPPING PROJECT

			COUNTY OF ORANGE OC PUBLIC WORKS OC SURVEY/FIELD SERVICES/BOUNDARY ANALYSIS & MAPPING		
			SAN JUAN CREEK CHANNEL(L01)		
			TITLE SHEET		
			LOCATIONS: AVENIDA AEROPUERTO AT SAN JUAN CREEK CHANNEL (L01)		
REV NO.	DATE	ITEM	DATE OF SURVEY: 10-27-2020		BY: J. JOHNS & PARTY
			TOPOGRAPHIC MAPPING		BY: I. ISLAS
			OFFICE CHECK		BY: J.MORENO, PLS
			FIELD CHECK		BY: R.MACIAS, PLS
			SCALE: N.T.S.	W.O.# EF16400	FILE #1920PW-IN0031
		REVISIONS	FILE: AVENIDA AEROPUERTO TOPO 2020.DWG		
			SHEET NO. 1 of 2		





NOTE:  
THE BOUNDARY LINEWORK (SAN JUAN CREEK RIGHT  
OF WAY LINES AND EASEMENTS) SHOWN PER ORANGE  
COUNTY SURVEY OF SAN JUAN CREEK CHANNEL (L01)  
LEVEE IMPROVEMENTS PHASE VI DATED FEB 9, 2012 AS  
SURVEY FILE NO. 1112PW-FL550007



COUNTY OF ORANGE OC PUBLIC WORKS OC SURVEY/FIELD SERVICES/BOUNDARY ANALYSIS & MAPPING			SHEET NO.	
SAN JUAN CREEK CHANNEL AVENIDA AEROPUERTO			2	
TOPOGRAPHIC MAP LOCATION: AVENIDA AEROPUERTO CITY OF SAN JUAN CAPISTRANO			of	
DATE OF SURVEY: 10/27/2020 TOPOGRAPHIC MAPPING OFFICE CHECK FIELD CHECK SCALE: 1" = 10' FILE: AVENIDA_AEROPUERTO_TOPO_2020.DWG			BY: J. JOHNS & PARTY BY: I. ISLAS BY: J. MORENO, PLS BY: R. MAGIAS, PLS FILE #1920PW-IN0031	
MARK	DATE	ITEM	REVISIONS	