

ESTABLISHMENT NOTES

- (A)** ESTABLISHED A POINT ON THE BACK TANGENT LINE OF THE CITY DRIVE BY TIES PER R1
- (B)** ESTABLISHED A PORTION OF THE BACK TANGENT AND THE CITY DRIVE CENTERLINE BY HOLDING A LINE BETWEEN ESTABLISHMENT **(A)** AND MONUMENT **[2]**
- (C)** ESTABLISHED THE B.C. ON THE CENTERLINE OF THE CITY DRIVE BY HOLDING RECORD DISTANCE OF 971.67 FEET PER R2 FROM ESTABLISHMENT **(A)** THROUGH THE N'LY PROLONGATION OF LINE ESTABLISHMENT **(B)**
- (D)** ESTABLISHED THE CENTERLINE OF THE CITY DRIVE BY HOLDING RECORD CURVE INFORMATION PER R13 TANGENT TO LINE ESTABLISHMENT **(B)** AT ESTABLISHMENT NOTE **(C)**
- (E)** ESTABLISHED THE CENTERLINE OF THE CITY DRIVE BY HOLDING A LINE TANGENT TO CURVE ESTABLISHMENT **(D)** FROM NW'LY TERMINUS OF SAID NOTE
- (F)** ESTABLISHED THE ANGLE POINT ON S'LY LINE OF PARCEL 1 PER R15 BY DISTANCE DISTANCE INTERSECTION HOLDING RECORD DISTANCES OF 18.00 AND 935.46 FEET PER R15
- (G)** ESTABLISHED THE S'LY LINE OF PARCEL 1 PER R15 BY HOLDING A LINE BETWEEN MONUMENT **[8]** AND ESTABLISHMENT NOTE **(E)**
- (H)** ESTABLISHED THE CENTERLINE OF THE CITY DRIVE BY HOLDING THE RECORD ANGLE OF 90°0'0" PER R15 FROM LINE ESTABLISHMENT **(C)** AT MONUMENT **[8]**
- (I)** ESTABLISHED THE CENTERLINE OF THE CITY DRIVE BY HOLDING RECORD RADIUS PER R13 AND TANGENT TO LINE ESTABLISHMENTS **(E)** AND **(F)**
- (J)** ESTABLISHED THE S'LY LINE OF PARCEL 1 PER R15 BY HOLDING A LINE BETWEEN MONUMENTS **[10]** AND **[11]**
- (K)** ESTABLISHED THE S'LY LINE OF PARCEL 1 PER R15 BY HOLDING RECORD DISTANCE AND ANGLE PER R15 FROM LINE ESTABLISHMENT **(J)** AT MONUMENT **[10]**
- (L)** ESTABLISHED THE S'LY LINE OF PARCEL 1 PER R15 BY HOLDING A LINE BETWEEN THE SW'LY TERMINUS OF LINE ESTABLISHMENT **(K)** AND ESTABLISHMENT NOTE **(C)**
- (M)** ESTABLISHED THE S'LY LINE OF PARCEL 1 PER R15 BY HOLDING A LINE BETWEEN MONUMENTS **[11]** AND **[12]**
- (N)** ESTABLISHED THE ANGLE POINTS ON S'LY LINE OF PARCEL 1 PER R15 BY LEAST SQUARE ADJUSTMENT PER R15 BETWEEN MONUMENTS **[12]** AND **[14]**
- (R)** ESTABLISHED THE CENTERLINE OF MANCHESTER AVENUE (OLD CENTERLINE) BY HOLDING A LINE PARALLEL WITH AND RECORD DISTANCE OF 10 FEET PER R19 E'LY OF LINE ESTABLISHMENT **(S)**
- (S)** ESTABLISHED THE SW CORNER OF LOT 35 OF R23 BY HOLDING RECORD DISTANCE OF 329.72 FEET S'LY FROM ESTABLISHMENT NOTE **(M)** S'LY ALONG LINE ESTABLISHMENT **(G)**
- (T)** ESTABLISHED THE S'LY LINE OF LOT 35 OF R23 BY HOLDING A LINE BETWEEN MONUMENT **[16]** AND ESTABLISHMENT NOTE **(S)**
- (U)** ESTABLISHED THE INTERSECTION OF S'LY LINE OF LOT 35 OF R23 WITH NW'LY R/W LINE OF SANTA ANA RIVER BY HOLDING RECORD DISTANCE OF 551.55 FEET PER R2 E'LY FROM ESTABLISHMENT NOTE **(S)** ALONG LINE ESTABLISHMENT **(I)**
- (V)** ESTABLISHED THE NW CORNER OF PARCEL 1 OF R6 BY HOLDING RECORD DISTANCE OF 40.00 FEET PER R6 FROM ESTABLISHMENT NOTE **(S)** E'LY ALONG LINE ESTABLISHMENT **(I)**
- (W)** ESTABLISHED THE NE CORNER OF PARCEL 1 OF R6 BY HOLDING RECORD DISTANCE OF 164.00 FEET PER R6 FROM ESTABLISHMENT NOTE **(V)** E'LY ALONG LINE ESTABLISHMENT **(I)**
- (X)** ESTABLISHED THE NE CORNER OF PARCEL G.A. 1118-10.01 OF R9 BY HOLDING RECORD DISTANCE OF 79.00 FEET CALCULATED PER R9 FROM ESTABLISHMENT NOTE **(W)** E'LY ALONG LINE ESTABLISHMENT **(I)**
- (Y)** ESTABLISHED THE SE CORNER OF PARCEL G.A. 1118-10.01 OF R9 BY HOLDING RECORD DISTANCE OF 248.00 FEET PERPENDICULAR TO LINE ESTABLISHMENT **(I)** PER R9 S'LY FROM ESTABLISHMENT NOTE **(Y)**
- (Z)** ESTABLISHED THE E'LY R/W LINE OF THE CITY DRIVE BY HOLDING A LINE PARALLEL WITH AND RECORD DISTANCE OF 50.00 FEET PER R6 E'LY OF LINE ESTABLISHMENT **(B)**

ESTABLISHMENT NOTES

- (AB)** ESTABLISHED THE S'LY LINE OF PARCEL 2 OF R6 BY HOLDING A LINE PARALLEL WITH AND RECORD DISTANCE OF 248.00 FEET PER R6 S'LY OF LINE ESTABLISHMENT **(I)**
- (AB)** ESTABLISHED THE S'LY LINE OF PARCEL 1 OF R6 BY HOLDING A LINE PARALLEL WITH LINE ESTABLISHMENT **(I)** AT MONUMENT **[4]**
- (AD)** ESTABLISHED THE E'LY LINE OF PARCEL G.A. 1118-10.01 OF R9 BY HOLDING A LINE BETWEEN ESTABLISHMENT NOTES **(S)** AND **(Y)**
- (AD)** ESTABLISHED THE W'LY LINE OF PARCEL G.A. 1118-10.01 OF R9 BY HOLDING A LINE PARALLEL WITH LINE ESTABLISHMENT **(AD)** AT ESTABLISHMENT NOTE **(AD)**
- (AE)** ESTABLISHED THE SW CORNER OF PARCEL G.A. 1118-10.01 OF R9 BY INTERSECTION HOLDING LINE ESTABLISHMENTS **(AD)** AND **(AD)**
- (AF)** ESTABLISHED THE SW CORNER OF PARCEL 1 OF R6 BY INTERSECTION HOLDING LINE ESTABLISHMENTS **(Z)** AND **(AB)**
- (AD)** ESTABLISHED THE W'LY LINE OF PARCEL 2 OF R6 BY HOLDING RECORD DISTANCE AND ANGLE PER R3 FROM LINE ESTABLISHMENT **(Z)** AT ESTABLISHMENT NOTE **(S)**
- (AB)** ESTABLISHED THE W'LY LINE OF PARCEL 2 OF R6 BY HOLDING RECORD DISTANCE AND ANGLE PER R3 FROM LINE ESTABLISHMENT **(AD)** AT S'LY TERMINUS OF LINE ESTABLISHMENT **(AD)**
- (AI)** ESTABLISHED THE SW CORNER OF PARCEL 2 OF R6 BY INTERSECTION HOLDING LINE ESTABLISHMENTS **(AD)** AND **(AD)**
- (AD)** ESTABLISHED THE S'LY LINE OF R5 BY W'LY PROLONGATION OF LINE ESTABLISHMENT **(AD)** FROM ESTABLISHMENT NOTE **(AD)**
- (AK)** ESTABLISHED THE B.C. OF THE CITY DRIVE CENTERLINE BY HOLDING RECORD DISTANCE OF 490.63 FEET S'LY ALONG LINE ESTABLISHMENT **(B)** FROM MONUMENT **[2]**
- (AL)** ESTABLISHED THE CENTERLINE OF THE CITY DRIVE BY HOLDING RECORD CURVE INFORMATION PER R4 TANGENT TO LINE ESTABLISHMENT **(B)** AT MONUMENT NOTE **(AD)**
- (AD)** ESTABLISHED THE N'LY LINE OF PARCEL 102303-1 PER R10 BY HOLDING A LINE BETWEEN MONUMENTS **[3]** AND **[5]**
- (AN)** ESTABLISHED THE NW'LY R/W LINE OF SANTA ANA RIVER BY HOLDING A LINE BETWEEN ESTABLISHMENT NOTE **(I)** AND MONUMENT **[5]**
- (AO)** ESTABLISHED THE SE'LY LINE OF PARCEL 102303-1 PER R10 BY HOLDING RECORD DISTANCE OF 61.04 FEET PER R10 ALONG SW'LY PROLONGATION OF LINE ESTABLISHMENT **(AD)** FROM MONUMENT **[5]**
- (AP)** ESTABLISHED THE SE CORNER OF PARCEL 102303-1 PER R10 BY HOLDING RECORD DISTANCE AND ANGLE PER R10 FROM SW'LY TERMINUS OF LINE ESTABLISHMENT **(AD)**
- (AP)** ESTABLISHED THE SW CORNER OF PARCEL 102303-1 PER R10 BY HOLDING RECORD DISTANCE OF 50.00 FEET S'LY ALONG THE RADIAL LINE OF CURVE ESTABLISHMENT **(AD)** FROM THE E.C.
- (AP)** ESTABLISHED THE S'LY LINE OF PARCEL 102303-1 PER R10 BY HOLDING A LINE BETWEEN ESTABLISHMENTS **(AP)** AND **(AP)**
- (AS)** ESTABLISHED THE E'LY LINE OF THE CITY DRIVE BY HOLDING A LINE PARALLEL WITH AND DISTANCE OF 50 FEET E'LY OF LINE CURVE ESTABLISHMENT **(AL)**
- (AT)** ESTABLISHED THE NW'LY R/W LINE OF SANTA ANA RIVER BY HOLDING RECORD COURSE INFORMATION PER R18
- (AD)** ESTABLISHED THE OLD SW'LY R/W LINE OF SOUTHERN PACIFIC RAILROAD ESTABLISHED BY HOLDING A LINE BETWEEN MONUMENT **[14]** AND NE'LY TERMINUS OF CURVE ESTABLISHMENT **(S)**
- (AD)** ESTABLISHED THE SE CORNER OF PARCEL 102303-1 OF R10 BY HOLDING THE RECORD DISTANCE OF 395.28 PER R4 SW'LY ALONG LINE ESTABLISHMENT **(AP)** FROM ESTABLISHMENT **(I)**
- (AM)** ESTABLISHED BY INTERSECTION HOLDING LINE ESTABLISHMENT **(B)** AND A LINE PERPENDICULAR TO LINE ESTABLISHMENT **(B)** FROM MONUMENT **[2]**

EASEMENT NOTES

- (1)** EASEMENT FOR AN OUT FALL SEWER PER R3

MONUMENT NOTES

- [1]** FOUND LEAD, BRASS NAIL AND 3/4 INCH BRASS TAG STAMPED "TIE POINT PLS 6343" PER R1, FLUSH IN CONCRETE. ACCEPTED AS A TIE POINT FOR THE CENTERLINE OF THE CITY DRIVE
- [2]** FOUND 3/4 INCH HEX BAR WITH PARTIALLY LEGIBLE 3/4 INCH BRASS TAG STAMPED "RCE 556" IN MONUMENT WELL PER R2, DOWN 1.7 FEET IN A.C. ACCEPTED AS A POINT ON THE CENTERLINE OF THE CITY DRIVE
- [3]** FOUND LEAD, BRASS NAIL AND 3/4 INCH BRASS TAG STAMPED "PLS 6343" NO REFERENCE, FLUSH IN CONCRETE. ACCEPTED AS NORTHWEST CORNER OF INSTRUMENT NO. 20040001062820 O.R. R10
- [4]** FOUND 1-1/2 INCH IRON PIPE WITH 3/4 INCH BRASS TAG STAMPED "RCE 3795" PER R6, DOWN 0.5 FEET IN DIRT, ACCEPTED AS THE SOUTHEAST CORNER OF PARCEL 1 PER R6
- [5]** FOUND BOAT SPIKE AND 1-1/2 INCH ALUMINUM TAG STAMPED "PLS 6343" FLUSH IN ASPHALT , NO REFERENCE. ACCEPTED AS NORTH EAST CORNER PER R10
- [6]** FOUND 3/4 INCH HEX BAR WITH PARTIALLY LEGIBLE 3/4 INCH BRASS TAG STAMPED "RCE 1655" PER R13, DOWN 1.9 FEET IN A.C. ACCEPTED AS A POINT ON CENTERLINE OF THE CITY DRIVE, S39°26'42"E 0.04' FROM B.C.
- [7]** FOUND SPIKE WITH PUNCH PER R13, DOWN 0.25 FEET BELOW IN A.C. ACCEPTED AS A POINT ON CENTERLINE OF THE CITY DRIVE
- [8]** FOUND BOAT SPIKE WITH 1-1/2 INCH WASHER STAMPED "RCE 6978" PER R15, DOWN 0.30 FEET IN A.C. ACCEPTED AS INTERSECTION OF THE CITY DRIVE WITH W'LY PROLONGATION OF S'LY LINE OF PARCEL 1 PER R15
- [9]** FOUND LEAD, BRASS NAIL AND 3/4 INCH BRASS TAG STAMPED "PLS 7566" PER R14, FLUSH IN TOP OF CURB. ACCEPTED AS A TIE POINT FOR THE ANGLE POINT ON S'LY LINE OF PARCEL 1 PER R14
- [10]** FOUND 1-1/2 INCH IRON PIPE WITH 3/4 INCH BRASS TAG STAMPED "PLS 7566" PER R14, 0.35 FEET UP IN DIRT. ACCEPTED AS AN ANGLE POINT ON S'LY LINE OF PARCEL 1 PER R14
- [11]** FOUND LEAD, BRASS NAIL AND 3/4 INCH BRASS TAG STAMPED "PLS 7566" PER R15, FLUSH IN THE FACE OF A ROCK 0.10 UP IN DIRT. ACCEPTED AS AN ANGLE POINT ON S'LY LINE OF PARCEL 1 PER R14
- [12]** FOUND 1-1/2 INCH IRON PIPE WITH 3/4 INCH BRASS TAG STAMPED "PLS 7566" PER R14, UP 0.2 FEET IN DIRT. ACCEPTED AS AN ANGLE POINT ON S'LY LINE OF PARCEL 1 PER R15
- [13]** FOUND 1-1/4 INCH IRON PIPE WITH 3/4 INCH BRASS TAG STAMPED "PLS 7566", PER R14, DISTURBED. NOT ACCEPTED AS AN ANGLE POINT ON S'LY LINE OF PARCEL 1 PER R15, N46°51'27"W 0.26' FROM ESTABLISHED ANGLE POINT
- [14]** FOUND 2-1/4 INCH OUTSIDE DIAMETER IRON PIPE WITH 1-1/4 INCH BRASS TAG STAMPED "ORANGE CO COUNTY SURVEYOR RCE 6978" PER R15, DOWN 0.60 FEET IN DIRT. ACCEPTED AS AS AN ANGLE POINT ON S'LY LINE OF PARCEL 1 PER R15
- [15]** FOUND BENT 3/4 INCH OUTSIDE DIAMETER IRON PIPE WITH TACK AND NO TAG, PER R20, MEASURED TO CENTER, DOWN 1.6 FEET IN DIRT. ACCEPTED AS NW CORNER OF LOT 35
- [16]** FOUND 2-1/2 INCH IRON PIPE WITH A SCREW AND 1-1/4 INCH BRASS WASHER NOT STAMPED, PER R2, DOWN 1 FOOT IN DIRT. ACCEPTED AS INTERSECTION OF S'LY LINE OF LOT 35 PER R3 AND E'LY R/W LINE OF SANTA ANA RIVER PER R21

REFERENCES

- (R1) = CORNER RECORD, C.R. 2009-3281
- (R2) = RECORD OF SURVEY 93-1050, R.S.B. 152/7-20
- (R3) = RECORD OF SURVEY, R.S.B. 85/1
- (R4) = RECORD OF SURVEY 2003-1006, R.S.B. 199/1-16
- (R5) = GRANT DEED, O.R. 5923/1-3
- (R6) = PARCEL MAP, P.M.B. 25/32
- (R7) = GRANT DEED, INSTRUMENT NO. 19980842737 O.R.
- (R8) = GRANT DEED, O.R. 7170/26
- (R9) = FINAL ORDER OF CONDEMNATION NO. 130098, 7820/506-507
- (R10) = GRANT DEED, INSTRUMENT NO. 2004001062820 O.R
- (R11) = LEASE AGREEMENT, INSTRUMENT NO. 2012000297925 O.R.
- (R13) = PARCEL MAP NO. 81-769, P.M.B. 172/40-42
- (R14) = RECORD OF SURVEY 2002-1062, R.S.B. 193/16-18
- (R15) = PARCEL MAP, P.M.B. 62/43
- (R16) = RECORD OF SURVEY 2012-1051, R.S.B. 260/33
- (R17) = RECORD OF SURVEY NO. 2006-1204, R.S.B. 220/1-9
- (R18) = RECORD OF SURVEY 94-1026, R.S.B. 153/10-24
- (R19) = TRACT NO 3414, M.M. 249/11-19
- (R20) = O.C.S. ALIGNMENT NOTE, A 4-10/1243-1255
- (R21) = GRANT DEED, INSTRUMENT NO. 2003000369248 O.R.
- (R23) = DAWN TRACT, M.M. 8/21

LINE TABLE			
LINE #	BEARING	MEASURED DISTANCE	RECORD DISTANCE
L1	N00°42'05"E	59.64'	59.65' R1
L2	N09°49'13"W	36.58'	36.58' R1
L3	N19°29'28"W	28.67'	28.67' R1
L4	N21°54'40"E	84.46'	84.45' R1
L5	N89°08'10"W	40.00'	40.00' R3
L6	N83°43'59"W	50.00'	50.00' R3
L7	N89°08'10"W	38.14'	38.15' R3
L8	N89°08'10"W	15.93'	15.92' R3
L9	N05°03'19"W	99.99'	100.00' R3
L10	N12°01'34"W	18.50'	18.48' R3
L11	N24°24'26"E	61.04'	61.04' R10
L12	N24°26'24"E	0.63'	0.63' R10
L13	N00°40'59"E	130.51'	130.53' R6
L14	N00°40'59"E	30.29'	-

LINE TABLE			
LINE #	BEARING	MEASURED DISTANCE	RECORD DISTANCE
L15	N00°40'59"E	106.05'	106.01' R2
L16	N00°40'59"E	117.50'	-
L17	N00°40'49"E	70.77'	70.53' R13
L18	N00°40'49"E	34.78'	35.16' R2
L19	N00°40'49"E	18.00'	18.00' R14
L20	N67°11'47"E	35.12'	35.14' R15
L21	N53°03'41"E	49.90'	49.90' R15
L22	N89°24'00"W	48.12'	48.25' R14
L23	N60°04'15"W	26.00'	26.00' R14
L24	N48°07'44"E	42.17'	42.19' R14
L25	N46°59'13"E	26.96'	26.96' R18
L26	N65°35'34"W	15.00'	15.00' R18
L27	N89°19'01"W	11.17'	-
L28	N89°19'01"W	10.00'	10.00' R19

CURVE TABLE						
CURVE #	DELTA	RADIUS	LENGTH	RECORD DELTA	RECORD RADIUS	RECORD LENGTH
C1	5°35'02"	2000.00'	194.91'	5°35'02" R4	2000.00' R4	194.91' R4
C2	5°35'02"	2050.00'	199.79'	—	—	—
C3	3°08'45"	2050.00'	112.56'	3°08'37" R4	2000.00' R4	112.47' R4
C4	2°46'27"	999.98'	48.42'	—	—	—
C5	22°34'47"	2299.96'	906.39'	22°34'47" R18	2300.00' R18	906.41' R18
C6	1°41'38"	2050.00'	60.60'	1°41'35" R10	2050.00' R10	60.58' R10
C7	1°27'08"	2050.00'	51.96'	—	—	—
C8	2°26'17"	2050.00'	87.23'	—	—	—

BASIS OF BEARINGS

THE BASIS OF BEARINGS FOR THIS SURVEY IS BASED ON THE CALIFORNIA COORDINATE SYSTEM (CCS83), ZONE VI, NAD 83, OCS (2017.50) EPOCH ADJUSTMENT, AS DETERMINED LOCALLY BY A LINE BETWEEN CONTINUOUS GLOBAL POSITIONING STATIONS CGPS STATIONS (SACY) AND (CCCS) BEING NORTH 12°58'34" EAST AS DERIVED FROM THE COORDINATES PUBLISHED BY THE CALIFORNIA SPATIAL REFERENCE CENTER (CSRC) ALONG WITH DATA SHEETS ON FILE IN THE OFFICE OF THE ORANGE COUNTY SURVEYOR.

HORIZONTAL DATUM

COORDINATES SHOWN ARE BASED ON THE CALIFORNIA COORDINATE SYSTEM (CCS83), ZONE VI, NAD 83, OCS (2017.50) EPOCH ADJUSTMENT.

ALL DISTANCES SHOWN ARE GRID, UNLESS OTHERWISE NOTED. TO OBTAIN GROUND DISTANCES MULTIPLY GRID BY A COMBINED FACTOR OF 1.00001605.

THIS COMBINATION FACTOR WAS HELD AT: CP# 609 AS SHOWN ON SHEET 1 N:2232332.60' E:6063688.33' EL:124.5'

ALL DISTANCES ARE BASED ON THE U.S. SURVEY FOOT.

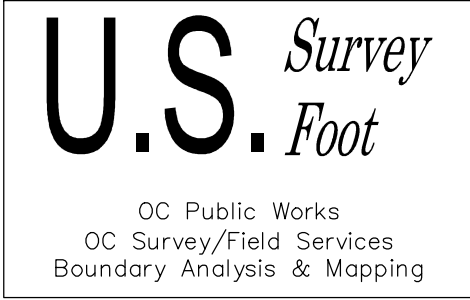
NOTE

RECORD DISTANCES SHOWN HEREON ARE AS THEY APPEAR ON THE DOCUMENT OF RECORD. DISTANCES MAY BE EITHER GRID OR GROUND, AS PER SAID RECORD

REFERENCE DOCUMENTS IN THE REFERENCE LEGEND ARE LIVE HYPERLINKS TO SAID DOCUMENT.

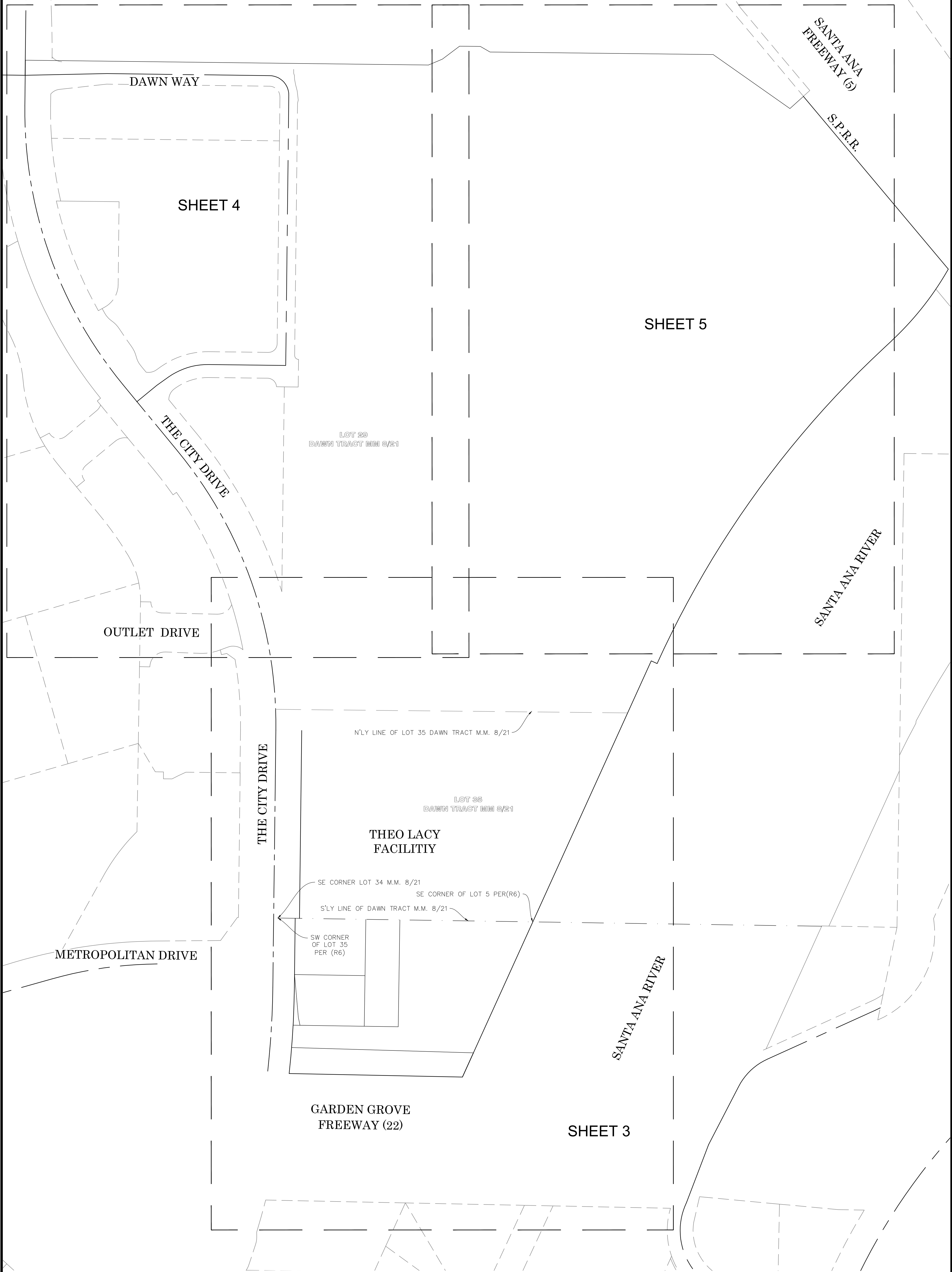
A BOUNDARY SURVEY OR TITLE SEARCH WAS NOT PERFORMED.

RIGHT OF WAY SHOWN WAS DERIVED FROM RECORD MAPS AND DOCUMENTS.

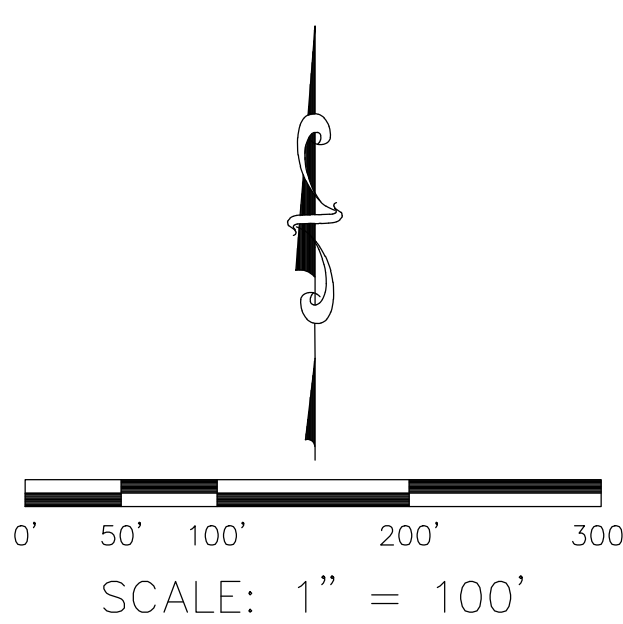


MARK	DATE	ITEM	COUNTY OF ORANGE OC PUBLIC WORKS OC SURVEY/FIELD SERVICES/BOUNDARY ANALYSIS & MAPPING			
			THEO LACY FACILITY SOUTHWESTERLY SITE SURVEY			
			BOUNDARY MAP			
			PROJECT LIMITS: THEO LACY FACILITY			
			-----			
			DATE OF SURVEY:11/16/2021		BY:P. MAGUIRE & CREW	
MAPPING		BY:F. DADASHI				
OFFICE CHECK		BY:M. LAFONTAINE, PLS				
FIELD CHECK		BY:P. MAGUIRE & CREW				
SCALE:1" = 50'		W.O. #EC29929				
FILE: THEO_LACY-BOUNDARY_2021.DWG		FILE # 2122PW-070001				

BOUNDARY MAP INDEX



**NOTE**  
A BOUNDARY SURVEY OR TITLE SEARCH WAS NOT PERFORMED.  
RIGHT OF WAY SHOWN WAS DERIVED FROM RECORD MAPS AND DOCUMENTS.

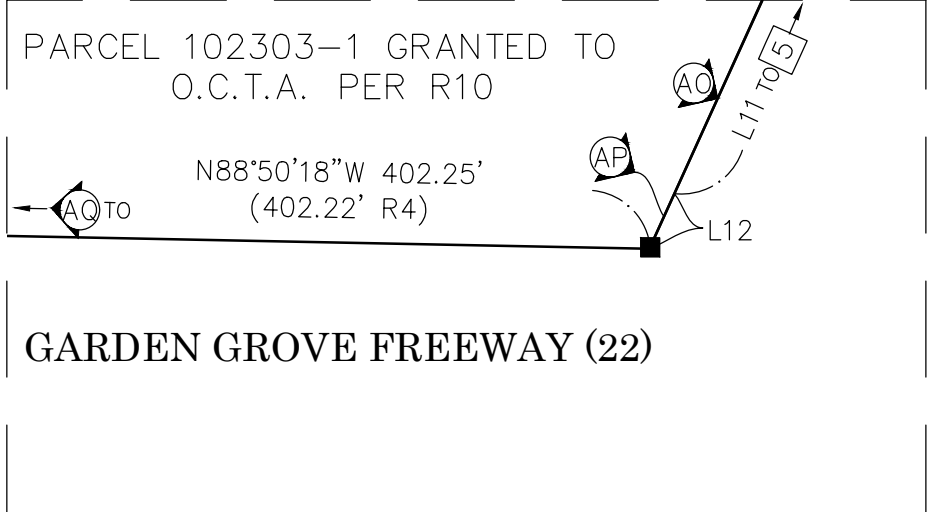


			COUNTY OF ORANGE OC PUBLIC WORKS OC SURVEY/FIELD SERVICES/BOUNDARY ANALYSIS & MAPPING			
			THEO LACY FACILITY SOUTHWESTERLY SITE SURVEY			
			BOUNDARY MAP			
			PROJECT LIMITS: THEO LACY FACILITY			
			-----			
			DATE OF SURVEY:11/16/2021		BY:P. MAGUIRE & CREW	
			MAPPING		BY:F. DADASHI	
			OFFICE CHECK		BY:M. LAFONTAINE, PLS	
			FIELD CHECK		BY:P. MAGUIRE & CREW	
			SCALE:1"=100'		W.O. #EC29929	
			FILE:THEO_LACY_BOUNDARY_2021.DWG		FILE #2122PW-0T0001	
MARK	DATE	ITEM	REVISIONS			
			3 of 10			



SEE SHEET 5

LOT 29  
DAWN TRACT MIM 8/21



DETAIL "B"  
N.T.S.

SEE SHEET 6

NOTES

ALL BOUNDARY LINES NOT SHOWN IN BOLD ARE FOR GRAPHICAL REPRESENTATION ONLY.

RECORD DISTANCES SHOWN HEREON ARE AS THEY APPEAR ON THE DOCUMENT OF RECORD. DISTANCES MAY BE EITHER GRID OR GROUND, AS PER SAID RECORD.

REFERENCE DOCUMENTS IN THE REFERENCE LEGEND ARE LIVE HYPERLINKS TO SAID DOCUMENT.

MONUMENT SYMBOLS CONTAIN LIVE HYPERLINKS TO IMAGES, IF THEY EXIST, OF RESPECTIVE MONUMENT.

THE CITY DRIVE (NEW CENTERLINE)

MANCHESTER AVENUE (OLD CENTERLINE)

PLANCENTIA AVENUE (OLD CENTERLINE)

UNINCORPORATED TERRITORY OF  
ORANGE COUNTY

SANTA ANA RIVER

METROPOLITAN  
DRIVE

GRANT TO STATE  
OF CALIFORNIA  
PER R5

GARDEN GROVE FREEWAY (22)

REFERENCES

- (R1) = CORNER RECORD, C.R. 2009-3281
- (R2) = RECORD OF SURVEY 93-1050, R.S.B. 152/7-20
- (R3) = RECORD OF SURVEY, R.S.B. 85/1
- (R4) = RECORD OF SURVEY 2003-1006, R.S.B. 199/1-16
- (R5) = GRANT DEED, O.R. 5923/1-3
- (R6) = PARCEL MAP, P.M.B. 25/32
- (R7) = GRANT DEED, INSTRUMENT NO. 19980842737 O.R.
- (R8) = GRANT DEED, O.R. 7170/26
- (R9) = FINAL ORDER OF CONDEMNATION NO. 130098, 7820/506-507
- (R10) = GRANT DEED, INSTRUMENT NO. 2004001062820 O.R
- (R11) = LEASE AGREEMENT, INSTRUMENT NO. 2012000297925 O.R.
- (R13) = PARCEL MAP NO. 81-769, P.M.B. 172/40-42
- (R14) = RECORD OF SURVEY 2002-1062, R.S.B. 193/16-18
- (R15) = PARCEL MAP, P.M.B. 62/43
- (R16) = RECORD OF SURVEY 2012-1051, R.S.B. 260/33
- (R17) = RECORD OF SURVEY NO. 2006-1204, R.S.B. 220/1-9
- (R18) = RECORD OF SURVEY 94-1026, R.S.B. 153/10-24
- (R19) = TRACT NO 3414, M.M. 249/11-19
- (R20) = O.C.S. ALIGNMENT NOTE, A 4-10/1243-1255
- (R21) = GRANT DEED, INSTRUMENT NO. 2003000369248 O.R.
- (R23) = DAWN TRACT, M.M. 8/21

NOTE

SEE SHEET 3 FOR BOUNDARY MAP INDEX

SEE SHEET 2 FOR MONUMENT NOTES, REFERENCES, ESTABLISHMENT AND EASEMENT NOTES

ALL BOUNDARY LINES NOT SHOWN IN BOLD ARE FOR GRAPHICAL REPRESENTATION ONLY.

RECORD DISTANCES SHOWN HEREON ARE AS THEY APPEAR ON THE DOCUMENT OF RECORD. DISTANCES MAY BE EITHER GRID OR GROUND, AS PER SAID RECORD.

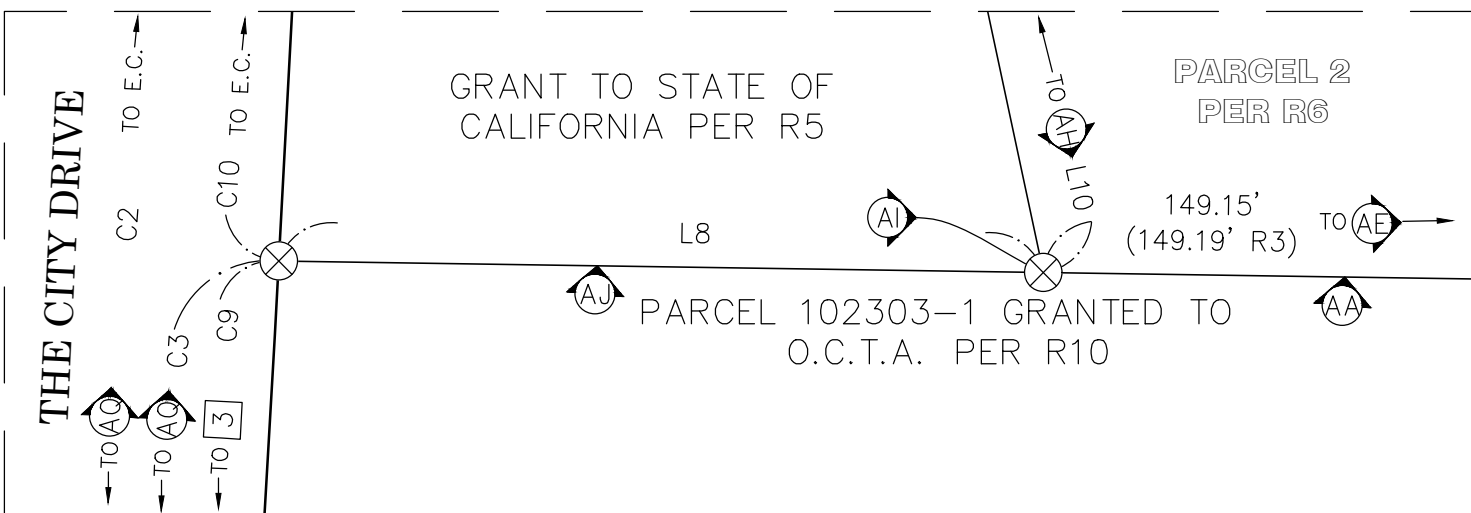
REFERENCE DOCUMENTS IN THE REFERENCE LEGEND ARE LIVE HYPERLINKS TO SAID DOCUMENT.

LEGEND

- FOUND MONUMENT AS NOTED
- ⊗ S.F.N. - SEARCHED, FOUND NOTHING
- ⊗ NO ACCESS, NOT SEARCHED
- ⊗ DID NOT SEARCHED DUE TO HEAVY TRAFFIC

DETAIL "A"  
N.T.S.

SCALE: 1" = 50'



U.S. Survey  
Foot

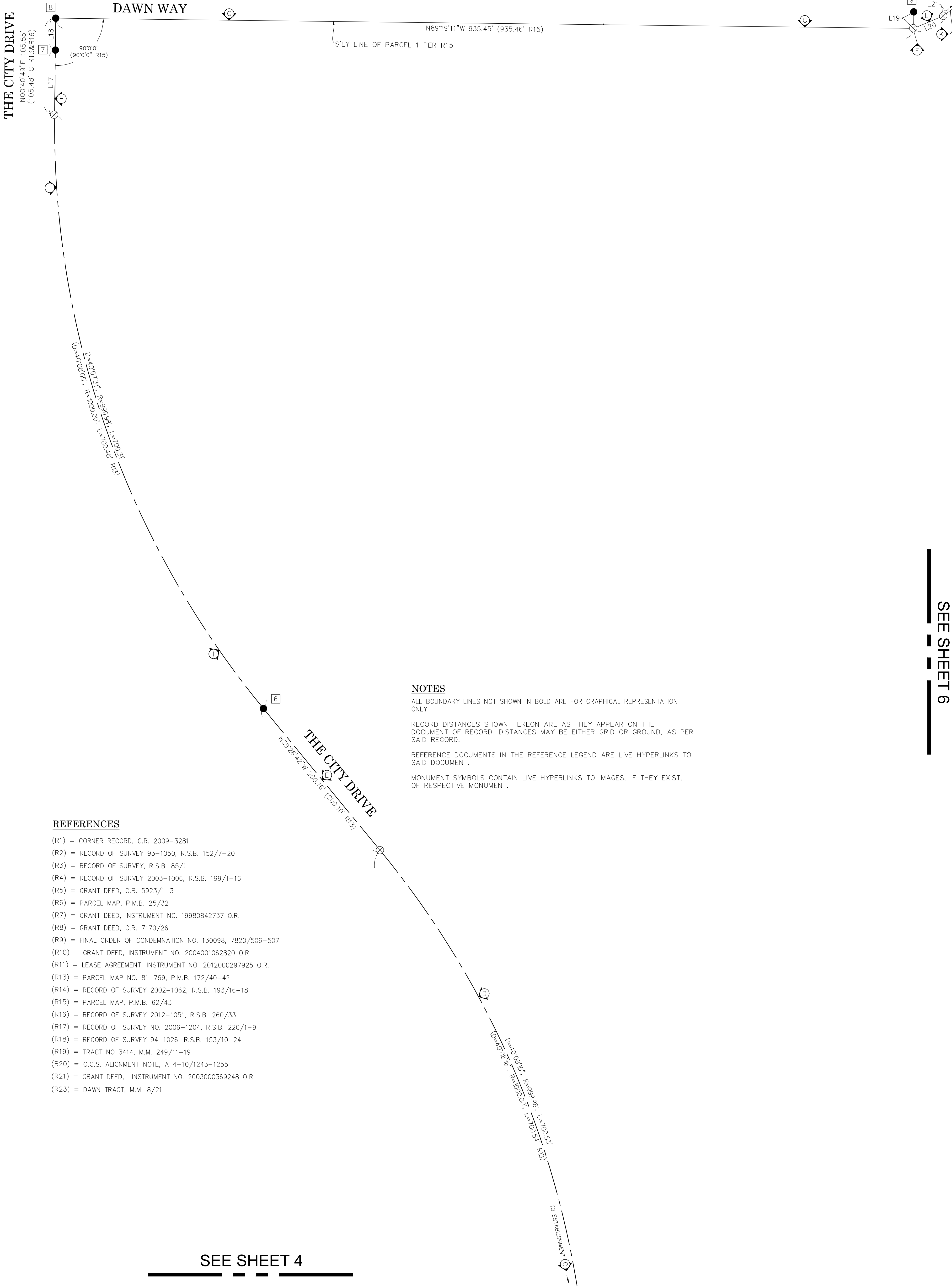
OC Public Works  
OC Survey/Field Services  
Boundary Analysis & Mapping

A BOUNDARY SURVEY OR TITLE SEARCH WAS NOT PERFORMED.

RIGHT OF WAY SHOWN WAS DERIVED FROM RECORD MAPS AND DOCUMENTS.

			COUNTY OF ORANGE OC PUBLIC WORKS OC SURVEY/FIELD SERVICES/BOUNDARY ANALYSIS & MAPPING			
THEO LACY FACILITY SOUTHWESTERLY SITE SURVEY						
BOUNDARY MAP						
PROJECT LIMITS: THEO LACY FACILITY						
-----						
DATE OF SURVEY:11/16/2021			BY:P. MAGUIRE & CREW		SHEET NO.  4 of 10	
MAPPING			BY:F. DADASHI			
OFFICE CHECK			BY:M. LAFONTAINE, PLS			
FIELD CHECK			BY:P. MAGUIRE & CREW			
MARK	DATE	ITEM	SCALE:1" = 50'		W.O. #EC29929	FILE #2122PW-0T0001
REVISIONS			FILE:THEO_LACY_BOUNDARY_2021.DWG			

PARCEL 1 PER R15



NOTES

ALL BOUNDARY LINES NOT SHOWN IN BOLD ARE FOR GRAPHICAL REPRESENTATION ONLY.

RECORD DISTANCES SHOWN HEREON ARE AS THEY APPEAR ON THE DOCUMENT OF RECORD. DISTANCES MAY BE EITHER GRID OR GROUND, AS PER SAID RECORD.

REFERENCE DOCUMENTS IN THE REFERENCE LEGEND ARE LIVE HYPERLINKS TO SAID DOCUMENT.

MONUMENT SYMBOLS CONTAIN LIVE HYPERLINKS TO IMAGES, IF THEY EXIST, OF RESPECTIVE MONUMENT.

REFERENCES

- (R1) = CORNER RECORD, C.R. 2009-3281
- (R2) = RECORD OF SURVEY 93-1050, R.S.B. 152/7-20
- (R3) = RECORD OF SURVEY, R.S.B. 85/1
- (R4) = RECORD OF SURVEY 2003-1006, R.S.B. 199/1-16
- (R5) = GRANT DEED, O.R. 5923/1-3
- (R6) = PARCEL MAP, P.M.B. 25/32
- (R7) = GRANT DEED, INSTRUMENT NO. 19980842737 O.R.
- (R8) = GRANT DEED, O.R. 7170/26
- (R9) = FINAL ORDER OF CONDEMNATION NO. 130098, 7820/506-507
- (R10) = GRANT DEED, INSTRUMENT NO. 2004001062820 O.R.
- (R11) = LEASE AGREEMENT, INSTRUMENT NO. 2012000297925 O.R.
- (R13) = PARCEL MAP NO. 81-769, P.M.B. 172/40-42
- (R14) = RECORD OF SURVEY 2002-1062, R.S.B. 193/16-18
- (R15) = PARCEL MAP, P.M.B. 62/43
- (R16) = RECORD OF SURVEY 2012-1051, R.S.B. 260/33
- (R17) = RECORD OF SURVEY NO. 2006-1204, R.S.B. 220/1-9
- (R18) = RECORD OF SURVEY 94-1026, R.S.B. 153/10-24
- (R19) = TRACT NO 3414, M.M. 249/11-19
- (R20) = O.C.S. ALIGNMENT NOTE, A 4-10/1243-1255
- (R21) = GRANT DEED, INSTRUMENT NO. 2003000369248 O.R.
- (R23) = DAWN TRACT, M.M. 8/21

NOTE

SEE SHEET 3 FOR BOUNDARY MAP INDEX

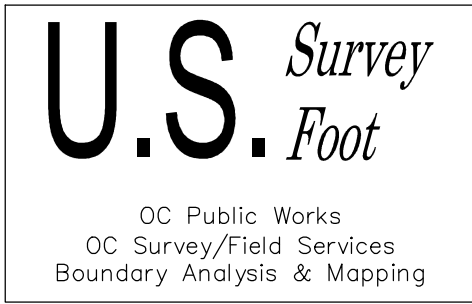
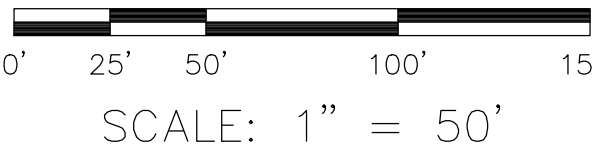
SEE SHEET 2 FOR MONUMENT NOTES, REFERENCES, ESTABLISHMENT AND EASEMENT NOTES

A BOUNDARY SURVEY OR TITLE SEARCH WAS NOT PERFORMED.

RIGHT OF WAY SHOWN WAS DERIVED FROM RECORD MAPS AND DOCUMENTS.

LEGEND

- FOUND MONUMENT AS NOTED
- ⊗ S.F.N. - SEARCHED, FOUND NOTHING
- ⊠ NO ACCESS, NOT SEARCHED
- DID NOT SEARCHED DUE TO HEAVY TRAFFIC



			COUNTY OF ORANGE OC PUBLIC WORKS OC SURVEY/FIELD SERVICES/BOUNDARY ANALYSIS & MAPPING			
			THEO LACY FACILITY SOUTHWESTERLY SITE SURVEY			
			BOUNDARY MAP			
			PROJECT LIMITS: THEO LACY FACILITY			
			-----			
			DATE OF SURVEY:11/16/2021		BY:P. MAGUIRE & CREW	
			MAPPING		BY:F. DADASHI	
			OFFICE CHECK		BY:M. LAFONTAINE, PLS	
			FIELD CHECK		BY:P. MAGUIRE & CREW	
			SCALE:1" = 50'		W.O. #EC29929	
			FILE: THEO_LACY_BOUNDARY_2021.DWG		FILE # 2122PW-0T0001	
MARK	DATE	ITEM	REVISIONS			
			5 of 10			

SEE SHEET 6

SEE SHEET 5

NOTES

ALL BOUNDARY LINES NOT SHOWN IN BOLD ARE FOR GRAPHICAL REPRESENTATION ONLY.

RECORD DISTANCES SHOWN HEREON ARE AS THEY APPEAR ON THE DOCUMENT OF RECORD. DISTANCES MAY BE EITHER GRID OR GROUND, AS PER SAID RECORD.

REFERENCE DOCUMENTS IN THE REFERENCE LEGEND ARE LIVE HYPERLINKS TO SAID DOCUMENT.

MONUMENT SYMBOLS CONTAIN LIVE HYPERLINKS TO IMAGES, IF THEY EXIST, OF RESPECTIVE MONUMENT.

REFERENCES

- (R1) = CORNER RECORD, C.R. 2009-3281
- (R2) = RECORD OF SURVEY 93-1050, R.S.B. 152/7-20
- (R3) = RECORD OF SURVEY, R.S.B. 85/1
- (R4) = RECORD OF SURVEY 2003-1006, R.S.B. 199/1-16
- (R5) = GRANT DEED, O.R. 5923/1-3
- (R6) = PARCEL MAP, P.M.B. 25/32
- (R7) = GRANT DEED, INSTRUMENT NO. 19980842737 O.R.
- (R8) = GRANT DEED, O.R. 7170/26
- (R9) = FINAL ORDER OF CONDEMNATION NO. 130098, 7820/506-507
- (R10) = GRANT DEED, INSTRUMENT NO. 2004001062820 O.R
- (R11) = LEASE AGREEMENT, INSTRUMENT NO. 2012000297925 O.R.
- (R13) = PARCEL MAP NO. 81-769, P.M.B. 172/40-42
- (R14) = RECORD OF SURVEY 2002-1062, R.S.B. 193/16-18
- (R15) = PARCEL MAP, P.M.B. 62/43
- (R16) = RECORD OF SURVEY 2012-1051, R.S.B. 260/33
- (R17) = RECORD OF SURVEY NO. 2006-1204, R.S.B. 220/1-9
- (R18) = RECORD OF SURVEY 94-1026, R.S.B. 153/10-24
- (R19) = TRACT NO 3414, M.M. 249/11-19
- (R20) = O.C.S. ALIGNMENT NOTE, A 4-10/1243-1255
- (R21) = GRANT DEED, INSTRUMENT NO. 2003000369248 O.R.
- (R23) = DAWN TRACT, M.M. 8/21

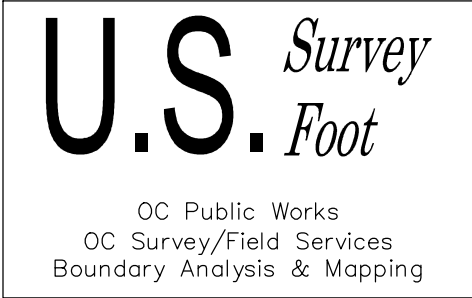
LOT 29  
DAWN TRACT MIN 8/21

SANTA ANA RIVER

SOUTHERN PACIFIC RAILROAD

OLD R/W

SEE SHEET 4



LEGEND

- FOUND MONUMENT AS NOTED
- ⊗ S.F.N. - SEARCHED, FOUND NOTHING
- ⊘ NO ACCESS, NOT SEARCHED
- ☑ DID NOT SEARCHED DUE TO HEAVY TRAFFIC

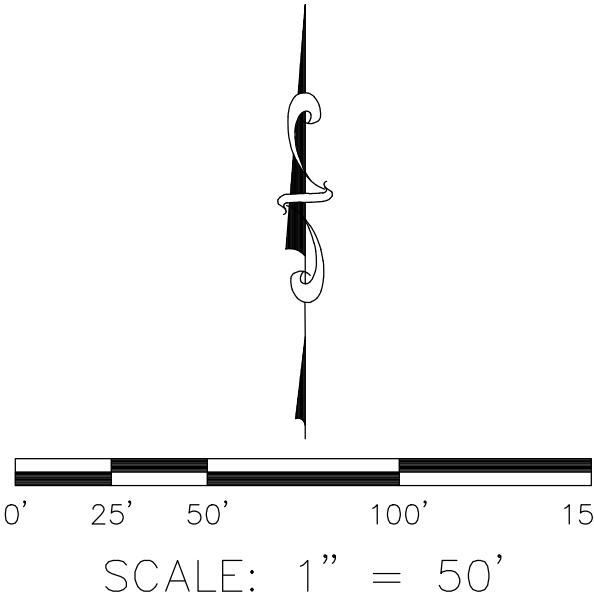
NOTE

SEE SHEET 2 FOR BOUNDARY MAP INDEX

SEE SHEET 6 FOR MONUMENT NOTES, REFERENCES, ESTABLISHMENT AND EASEMENT NOTES

A BOUNDARY SURVEY OR TITLE SEARCH WAS NOT PERFORMED.

RIGHT OF WAY SHOWN WAS DERIVED FROM RECORD MAPS AND DOCUMENTS.



			COUNTY OF ORANGE OC PUBLIC WORKS OC SURVEY/FIELD SERVICES/BOUNDARY ANALYSIS & MAPPING			
			THEO LACY FACILITY SOUTHWESTERLY SITE SURVEY			
			BOUNDARY MAP			
			PROJECT LIMITS: THEO LACY FACILITY			
			-----			
			DATE OF SURVEY:11/16/2021		BY:P. MAGUIRE & CREW	
			MAPPING		BY:F. DADASHI	
			OFFICE CHECK		BY:M. LAFONTAINE, PLS	
			FIELD CHECK		BY:P. MAGUIRE & CREW	
			SCALE:1" = 50'		W.O. #EC29929	
			FILE:THEO_LACY_BOUNDARY_2021.DWG		FILE # 2122PW-070001	
MARK	DATE	ITEM	REVISIONS			
			6 of 10			