



# OC PUBLIC WORKS DEPARTMENT

SHANE SILSBY, DIRECTOR

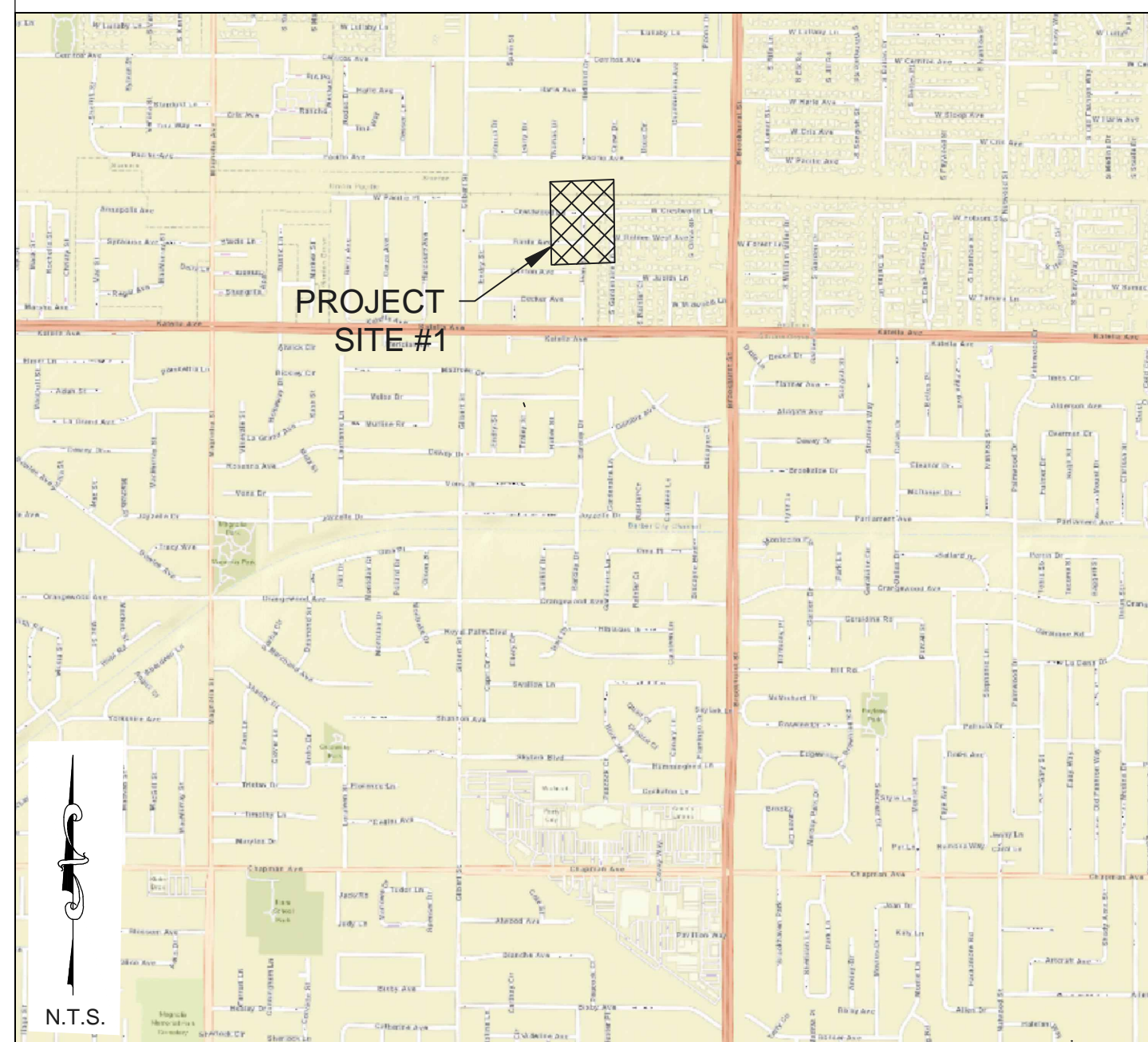
KEVIN HILLS, COUNTY SURVEYOR

## ANAHEIM ISLANDS ADA TOPOGRAPHIC MAP

LOCATION: INTERSECTION OF CRESTWOOD LANE AND JEAN STREET



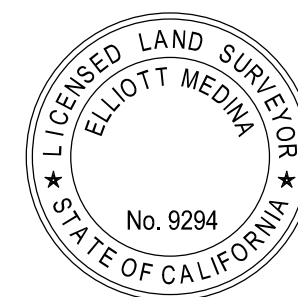
### LOCATION MAP



#### SENIOR LAND SURVEYOR'S CERTIFICATE:

THIS MAP CORRECTLY REPRESENTS A SURVEY MADE BY ME OR UNDER MY DIRECTION IN CONFORMANCE WITH REQUIREMENTS OF THE PROFESSIONAL LAND SURVEYOR'S ACT; THIS 1ST DAY OF OCTOBER, 2019.

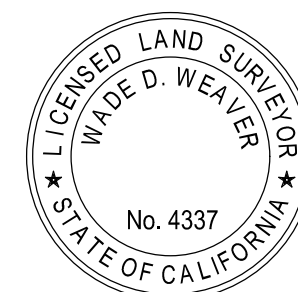
ELLIOTT MEDINA SENIOR LAND SURVEYOR



#### DEPUTY COUNTY SURVEYOR'S STATEMENT:

THIS MAP HAS BEEN EXAMINED IN ACCORDANCE WITH THE PROFESSIONAL LAND SURVEYOR'S ACT; THIS 1ST DAY OF OCTOBER, 2019.

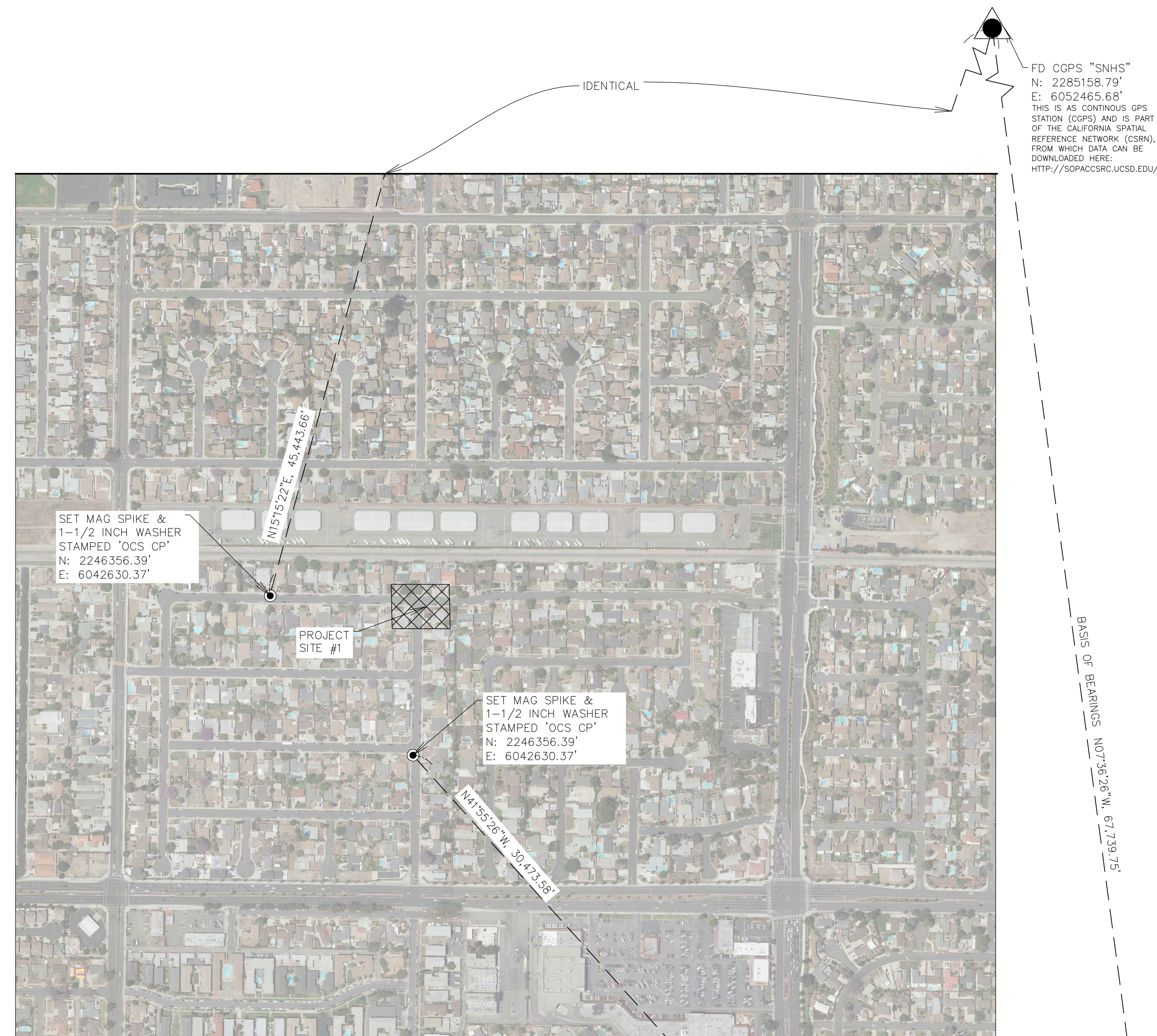
WADE WEAVER DEPUTY COUNTY SURVEYOR



**U.S. Survey Foot**

OC Public Works/Engineering Services  
OC Survey/Field Services  
Boundary Analysis & Mapping

N.T.S.



### BASIS OF BEARINGS

THE BASIS OF BEARING FOR THIS SURVEY IS BASED ON THE CALIFORNIA COORDINATE SYSTEM (CCS83), ZONE VI, NAD 83, OCS (2007.00) EPOCH ADJUSTMENT, AS DETERMINED LOCALLY BY A LINE BETWEEN CONTINUOUS GLOBAL POSITIONING STATIONS CGPS SNHS AND BLSA, BEING NORTH 66°06'41" EAST AS DERIVED FROM THE COORDINATES ESTABLISHED BY THE CALIFORNIA SPATIAL REFERENCE CENTER (CSRC) ALONG WITH DATASHEETS ON FILE IN THE OFFICE OF THE ORANGE COUNTY SURVEYOR.

### HORIZONTAL DATUM

COORDINATES SHOWN HEREON ARE BASED ON THE CALIFORNIA COORDINATE SYSTEM (CCS83), ZONE VI, 1983 NORTH AMERICAN DATUM (2007.00 EPOCH O.C.S. G.P.S. ADJUSTMENT).

ALL DISTANCES SHOWN ARE GRID, UNLESS OTHERWISE NOTED. MULTIPLY A GRID DISTANCE BY 1.00001115 TO OBTAIN GROUND DISTANCE. THE COMBINATION FACTOR WAS DERIVED FROM POINT NUMBER 800. N=2241297.92 E=6041092.86

ALL DISTANCES ARE BASED ON THE U.S. SURVEY FOOT.

### VERTICAL DATUM

O.C.S. BM. 1G-140-69 ELEV. = 84.582' YEAR LEVELED: 2005  
NAVD 1988 (O.C.S. 1995 ADJUSTMENT)

DESCRIBED BY OCS-2002- FOUND 3 3/4" OCS ALUMINUM BENCHMARK DISK STAMPED "1G-140-69", SET IN THE NORTHWESTERLY CORNER OF A 16 FT. BY 4 FT. CONCRETE CATCH BASIN. MONUMENT IS LOCATED IN THE NORTHEASTERLY CORNER OF THE INTERSECTION OF BALL ROAD AND MAGNOLIA STREET, 46 FT. NORTHERLY OF THE CENTERLINE OF BALL, AND 107 FT. EASTERLY OF THE CENTERLINE OF MAGNOLIA. MONUMENT IS SET LEVEL WITH THE SIDEWALK.

### NOTES

THE SURVEY INFORMATION SHOWN HEREON IS TO BE USED FOR TOPOGRAPHIC RELATIONSHIPS ONLY AND IS NOT INTENDED FOR LAND ACQUISITION OR BOUNDARY PURPOSES.

### SHEET INDEX

SHEET NO.	DESCRIPTION
SHEET #1	TITLE SHEET
SHEET #2	CRESTWOOD LANE AND JEAN STREET - TOPOGRAPHIC MAP
SHEET #3	CRESTWOOD LANE AND JEAN STREET - BOUNDARY MAP

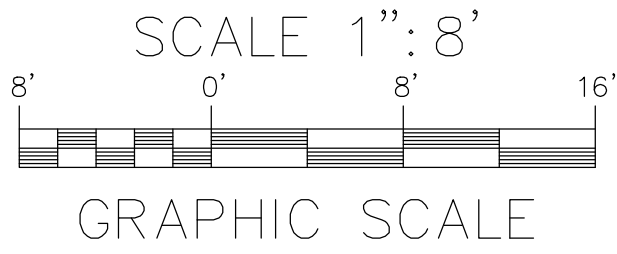
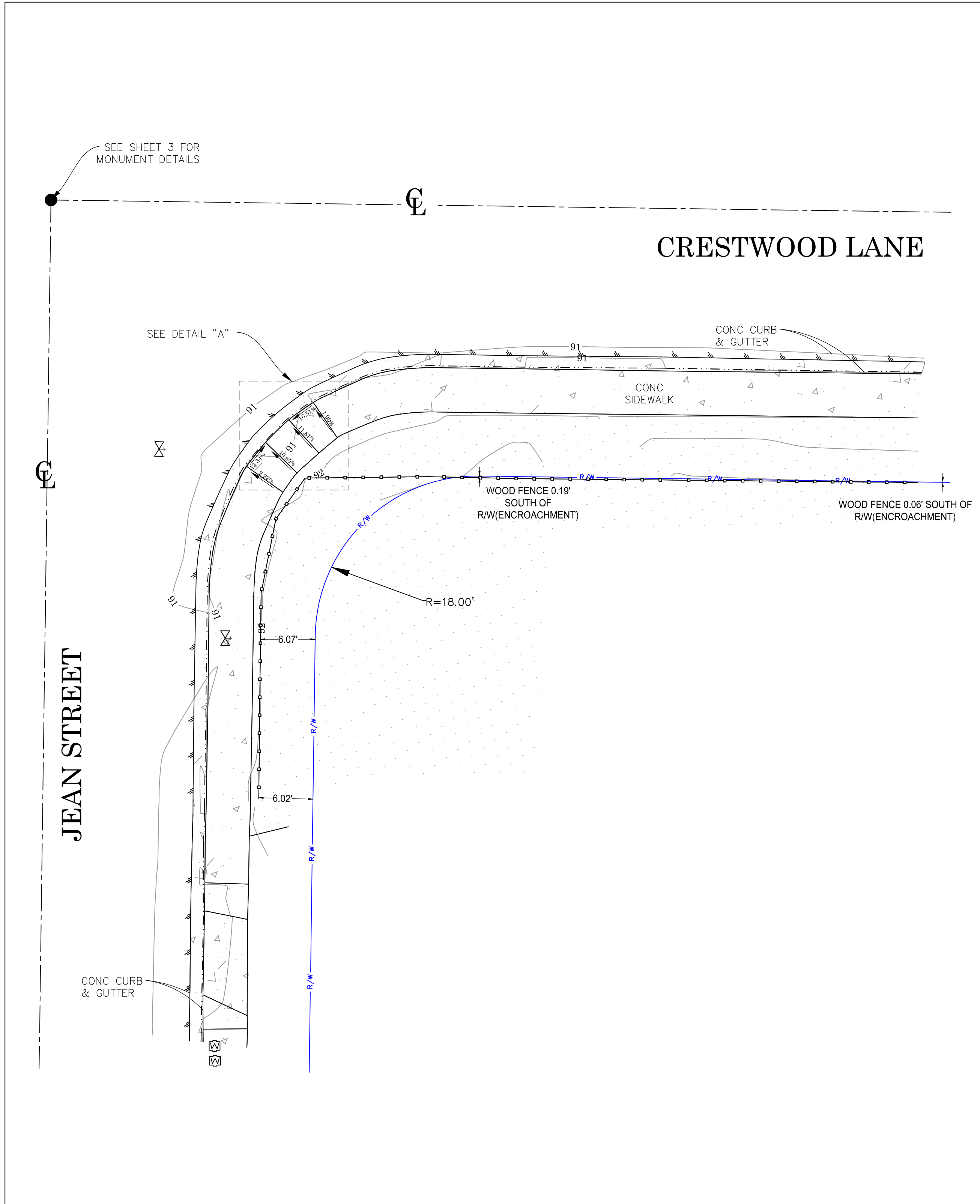
		COUNTY OF ORANGE OC PUBLIC WORKS OC SURVEY/FIELD SERVICES/BOUNDARY ANALYSIS & MAPPING	
		ANAHEIM ISLANDS ADA	
		TITLE SHEET	
		LOCATIONS: BROADWAY ST AND GREENWICH LANE, BROADWAY AND BROOKHURST AVE, BROADWAY STREET AND BROOKHURST AVE	
		DATE OF SURVEY: 06-05-2019	BY: R.MACIAS, PLS & PARTY
		TOPOGRAPHIC MAPPING	BY: K.AHMED
		OFFICE CHECK	BY: E.MEDINA, PLS
		FIELD CHECK	BY: R.MACIAS, PLS
		SCALE: N.T.S.	FILE #1819PW-IN0009
		FILE: ANAHEIMISLANDS_TOPOGRAPHICMAP_2019.DWG	
REV NO.	DATE	ITEM	
REVISIONS			

SHEET NO.  
1  
of  
3

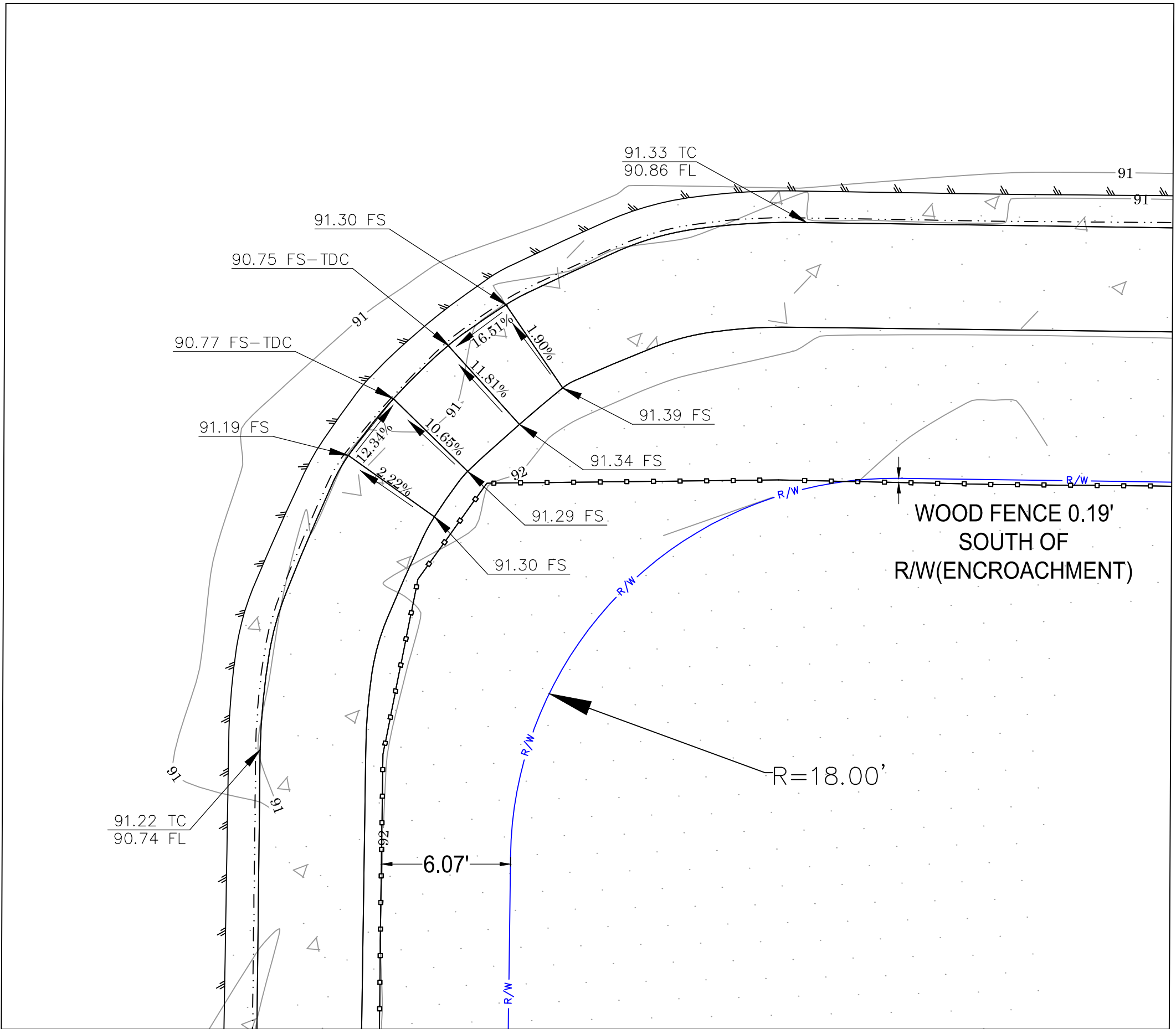
## TOPOGRAPHIC MAPPING PROJECT



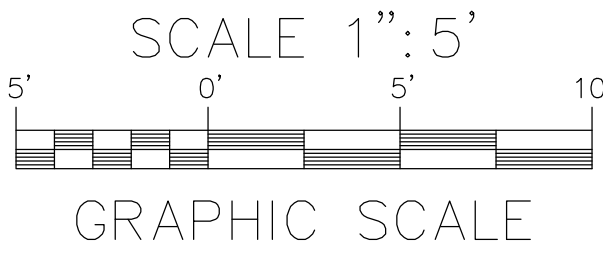
CRESTWOOD LANE &  
JEAN STREET



GRAPHIC SCALE



DETAIL "A"



GRAPHIC SCALE



AERIAL IMAGERY

SCALE: N.T.S



U.S. Survey  
Foot

OC Public Works/Engineering Services  
OC Survey/Field Services  
Boundary Analysis & Mapping

CONTOUR INTERVAL= 0.5'

LEGEND

SYMBOL

- MTRWA Meter, Water  
VLVWA Valve, Water  
TDC Top of Depression Curb

LINE PATTERN KEY

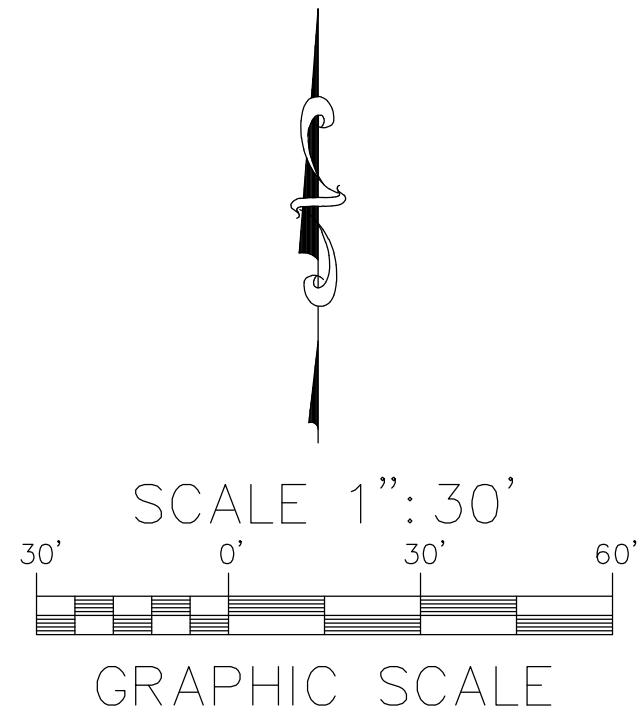
- Edge of Concrete  
Edge of Asphalt Pavement  
Flowline  
Wall, Block

AREA PATTERN KEY

- Concrete  
Dirt  
Grass

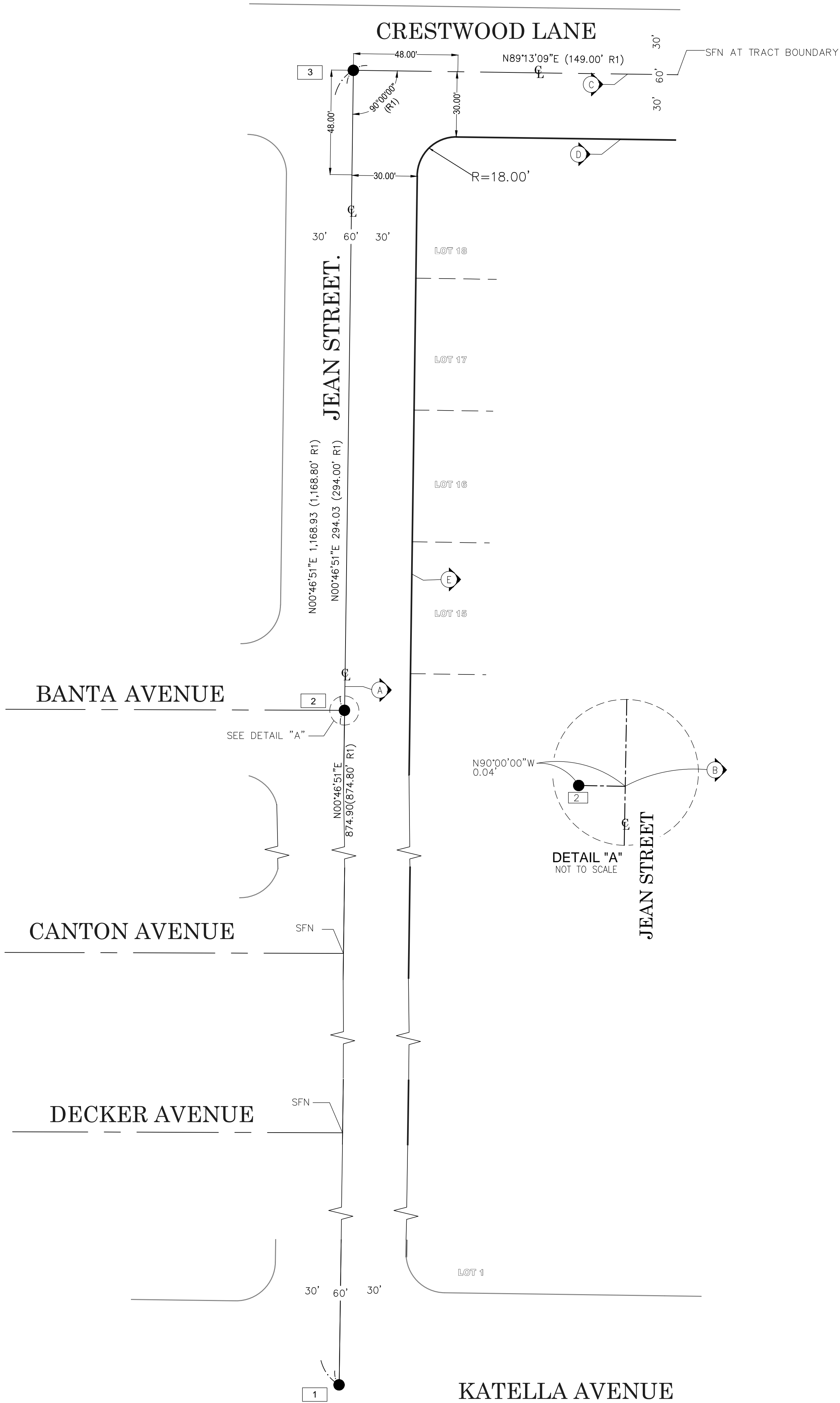
REV NO.	DATE	ITEM	COUNTY OF ORANGE OC PUBLIC WORKS OC SURVEY/FIELD SERVICES/BOUNDARY ANALYSIS & MAPPING		
			ANAHEIM ISLANDS ADA		
			TOPOGRAPHIC MAP		
			LOCATION: CRESTWOOD AVENUE & JEAN ST		
			DATE OF SURVEY: 06-05-2019	BY: R.MACIAS, PLS	SHEET NO.  2 of 3
			TOPOGRAPHIC MAPPING	BY: K.AHMED	
			OFFICE CHECK	BY: E.MEDINA, PLS	
			FIELD CHECK	BY: R.MACIAS, PLS	
			REVISIONS		
SCALE: 1" = 8'      W.O.# ER19822P					
FILE: CRESTWOOD_JEAN_TOPOGRAPHICMAP_2019.DWG					





**U.S. Survey Foot**

OC Public Works/Engineering Services  
OC Survey/Field Services  
Boundary Analysis & Mapping



### ESTABLISHMENT NOTES

- (A) ESTABLISHED THE CENTERLINE OF JEAN STREET BY FOUND MONUMENT 1 AND 3 PER R1.
- (B) ESTABLISHED INTERSECTION OF JEAN STREET & BANTA AVENUE BY TIES PER R2.
- (C) ESTABLISHED THE CENTERLINE OF CRESTWOOD LANE BY HOLDING RECORD ANGLE FROM ESTABLISHMENT NOTE (A) FOR JEAN ST. PER R1.
- (D) ESTABLISHED THE SOUTHERLY R/W OF CRESTWOOD LANE PARALLEL AND 30' PERPENDICULAR FROM THE ESTABLISHED CENTERLINE PER R1.
- (E) ESTABLISHED THE EASTERLY R/W OF JEAN STREET PARALLEL AND 30' PERPENDICULAR FROM THE ESTABLISHED CENTERLINE PER R1.

### MONUMENT NOTES

- 1 FD. PUNCHED 2 INCH BRASS DISK DN 1.90' IN OCS WELL, ACCEPTED AS A POINT ON CENTERLINE OF JEAN STREET PER (R1).
- 2 FD. PK NAIL WITH OCS TAG 0.04' OFF THE ESTABLISHED CENTERLINE OF JEAN STREET PER (R1).
- 3 FD. PUNCHED BOAT SPIKE DN 0.25' IN AC. ACCEPTED AS THE INTERSECTION OF JEAN STREET & CRESTWOOD LANE PER (R1).

### HORIZONTAL DATUM

THE COORDINATES SHOWN ARE BASED ON THE CALIFORNIA COORDINATE SYSTEM OF 1983 (CCS83), ZONE VI, 1983 NORTH AMERICAN DATUM (2007.00 EPOCH, O.C.S. GPS ADJUSTMENT).

ALL DISTANCES SHOWN ARE GRID, RECORD DISTANCES ARE GROUND.

MULTIPLY A GRID DISTANCE BY 1.00001115 TO OBTAIN GROUND DISTANCE. THE COMBINATION FACTOR WAS DERIVED FROM POINT NUMBER 800.

ALL DISTANCES ARE BASED ON THE U.S. SURVEY FOOT.

### REFERENCES:

(R1) = TRACT NO. 2111, MM 61/46-48

(R2) = RECORD PER O.C.S NOTES A/4-10 PG 906

### LEGEND:

- FOUND MONUMENT AS NOTED

### NOTE:

LOTS SHOWN HEREON ARE FOR GRAPHICAL PURPOSES ONLY.

LINE IN BOLD IS ESTABLISHED BY SURVEY.

MARK	DATE	ITEM	COUNTY OF ORANGE OC PUBLIC WORKS OC SURVEY/FIELD SERVICES/BOUNDARY ANALYSIS & MAPPING			
			ANAHEIM ISLANDS ADA			
			BOUNDARY MAP			
			LOCATION: CRESTWOOD LANE & JEAN STREET			
			DATE OF SURVEY: 06/05/2019		BY: R.MACIAS, PLS & PARTY	
			BOUNDARY MAPPING		BY: K.AHMED	
			OFFICE CHECK		BY: E.MEDINA, PLS	
			FIELD CHECK		BY: R.MACIAS, PLS	
			SCALE: 1" = 50'		W.O.# ER20522	
FILE: ANAHEIMADA_STONYBROOK_BOUNDARY_2019.DWG		FILE: #1819PW-IN0009				
REVISIONS				SHEET NO.  3 of 3		