



OC PUBLIC WORKS DEPARTMENT

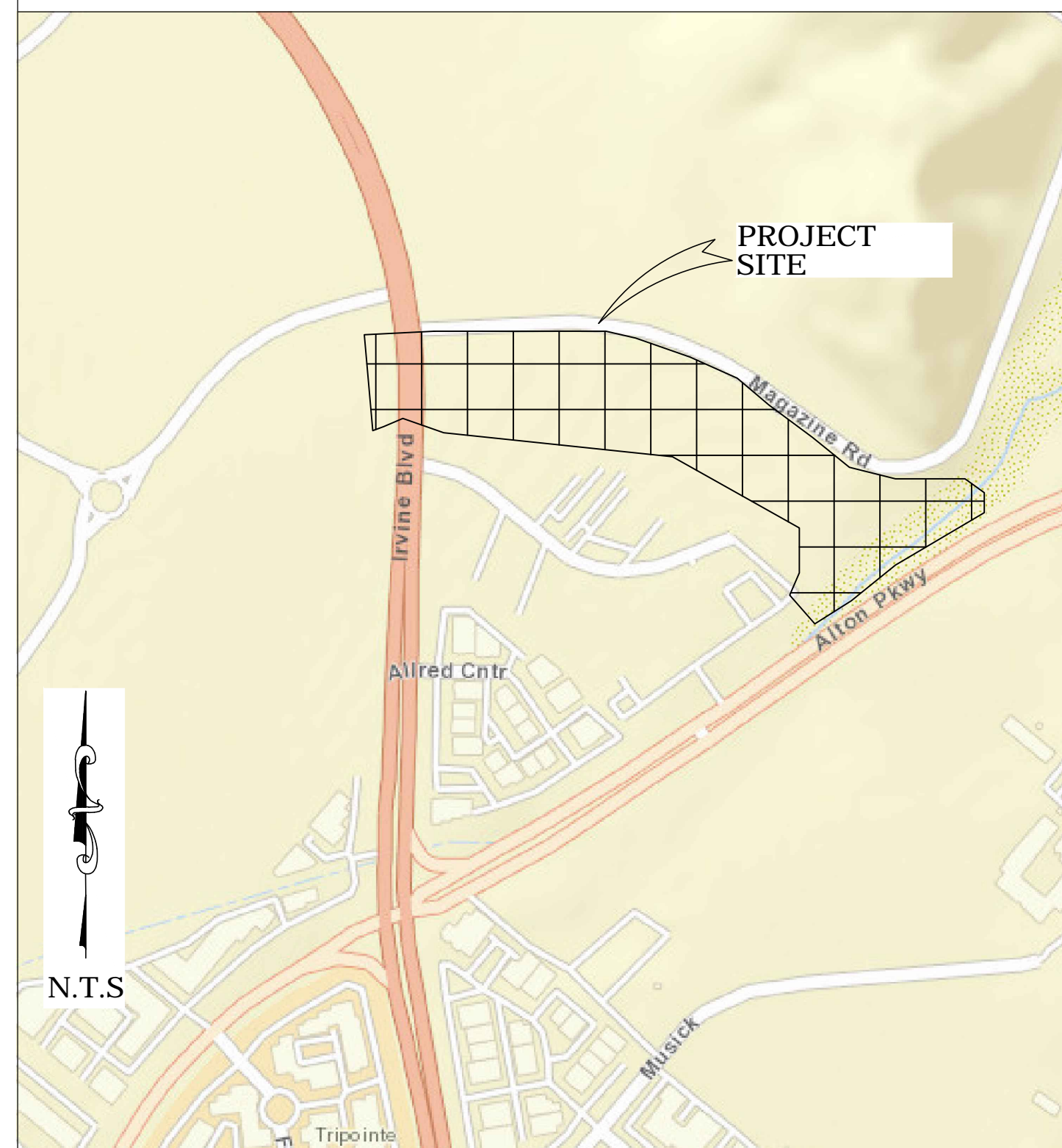
JAMES TREADAWAY, DIRECTOR OF PUBLIC WORKS

KEVIN HILLS, COUNTY SURVEYOR

ALTON PKWY WILDLIFE CORRIDOR

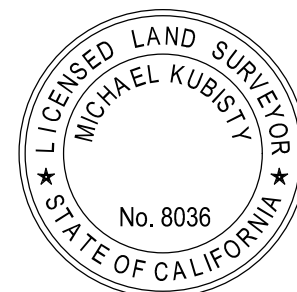


LOCATION MAP



SENIOR LAND SURVEYOR'S CERTIFICATE:

THIS MAP CORRECTLY REPRESENTS A SURVEY MADE BY ME OR UNDER MY DIRECTION IN CONFORMANCE WITH REQUIREMENTS OF THE PROFESSIONAL LAND SURVEYOR'S ACT; THIS 13 DAY OF OCTOBER, 2021.



MICHAEL KUBISTY, PLS. SENIOR LAND SURVEYOR

DEPUTY COUNTY SURVEYOR'S STATEMENT:

THIS MAP HAS BEEN EXAMINED IN ACCORDANCE WITH THE PROFESSIONAL LAND SURVEYOR'S ACT; THIS 13 DAY OF OCTOBER, 2021.



WADE WEAVER, PLS. DEPUTY COUNTY SURVEYOR



FOUND CGPS "TRAK"
N: 2171992.614'
E: 6088761.195'
THIS IS A CONTINUOUS GPS STATION (CGPS) AND IS PART OF THE CALIFORNIA SPATIAL REFERENCE NETWORK (CSRN), FROM WHICH DATA CAN BE DOWNLOADED HERE: [HTTP://SOPACCSRC.UCSO.EDU/](http://SOPACCSRC.UCSO.EDU/).

FOUND CGPS "OEOC"
N: 2225550.983'
E: 6107583.768'
THIS IS A CONTINUOUS GPS STATION (CGPS) AND IS PART OF THE CALIFORNIA SPATIAL REFERENCE NETWORK (CSRN), FROM WHICH DATA CAN BE DOWNLOADED HERE: [HTTP://SOPACCSRC.UCSO.EDU/](http://SOPACCSRC.UCSO.EDU/).



BASIS OF BEARINGS

THE BASIS OF BEARINGS FOR THIS SURVEY IS BASED ON THE CALIFORNIA COORDINATE SYSTEM (CCS83), ZONE VI, NAD 83, OCS (2017.50) EPOCH ADJUSTMENT, AS DETERMINED LOCALLY BY A LINE BETWEEN CONTINUOUS GLOBAL POSITIONING STATIONS CGPS STATIONS (OEOC) AND (TRAK) BEING NORTH 19°21'49" EAST AS DERIVED FROM THE COORDINATES PUBLISHED BY THE CALIFORNIA SPATIAL REFERENCE CENTER (CSRC) ALONG WITH DATA SHEETS ON FILE IN THE OFFICE OF THE ORANGE COUNTY SURVEYOR.

HORIZONTAL DATUM

COORDINATES SHOWN ARE BASED ON THE CALIFORNIA COORDINATE SYSTEM (CCS83), ZONE VI, NAD 83, OCS (2017.50) EPOCH ADJUSTMENT.
ALL DISTANCES SHOWN ARE GRID, UNLESS OTHERWISE NOTED. TO OBTAIN GROUND DISTANCES MULTIPLY GRID BY A COMBINED FACTOR OF 1.000045662. THIS COMBINATION FACTOR WAS DERIVED BY HOLDING POINT #407
N: 2189993.891 E: 6119073.712 ELEV.=459.45'
ALL DISTANCES ARE BASED ON THE U.S. SURVEY FOOT.

VERTICAL DATUM

O.C.S. BM. 3E-112-90 ELEV. = 456.541' YEAR LEVELED: 1990
NAVD 1988 (O.C.S. 1995 ADJUSTMENT)
DESCRIPTION: FOUND 3 3/4" OCS ALUMINUM BENCHMARK DISK STAMPED "3E-112-90" SET IN THE NORTHERLY END OF AN 80 FT. LONG CONCRETE HEADWALL. MONUMENT IS LOCATED ALONG THE NORTHEASTERLY SIDE OF IRVINE BOULEVARD, 230 FT. NORTHERLY OF THE CENTERLINE OF MAGAZINE ROAD AND 60 FT. EASTERLY OF THE CENTERLINE OF IRVINE. MONUMENT IS SET LEVEL WITH THE TOP OF THE HEADWALL.

NOTES

THE SURVEY INFORMATION SHOWN HEREON IS TO BE USED FOR TOPOGRAPHIC RELATIONSHIPS ONLY AND IS NOT INTENDED FOR LAND ACQUISITION OR BOUNDARY PURPOSES.
PARCELS SHOWN WITHOUT BEARING AND DISTANCES ARE FOR GRAPHICAL PURPOSES AND ARE PENDING RECEIPT OF TITLE REPORT.

SHEET INDEX

SHEET NO.	DESCRIPTION
SHEET 1	TITLE SHEET
SHEETS 2-5	BOUNDARY MAP
SHEETS 6-7	ALIGNMENT SHEET
SHEETS 8-10	TOPOGRAPHIC MAP

BASIS OF STATIONING

SEE ALIGNMENT SHEETS 6 & 7

PURPOSE OF SURVEY

THE PURPOSE OF THE SURVEY IS TO PROVIDE A TOPOGRAPHIC MAP FOR THIS ALTON PARKWAY WILDLIFE CORRIDOR.

TOPOGRAPHIC MAPPING PROJECT

			COUNTY OF ORANGE OC PUBLIC WORKS/ENGINEERING SERVICES OC SURVEY/FIELD SERVICES/BOUNDARY ANALYSIS & MAPPING			
			ALTON PKWY WILDLIFE CORRIDOR			
			TITLE SHEET			
			PROJECT LIMITS: FROM WEST OF IRVINE BOULEVARD TO ALTON PARKWAY			
			DATE OF SURVEY: 08/07/2020		BY: T. LOFGREEN	
			MAPPING		BY: R. BELTRAN	
			OFFICE CHECK		BY: M. LAFONTAINE, PLS	
			FIELD CHECK		BY: T. LOFGREEN & PARTY	
MARK	DATE	ITEM	SCALE: N.T.S.		FILE #1920PW-IND027	
		REVISIONS	FIL F-ALTON PKWY WILDLIFE CORRIDOR		TOPO. 2020.DWG	
			SHEET NO. 1 of 10			

BASIS OF BEARINGS

THE BASIS OF BEARINGS SHOWN HEREON ARE BASED ON THE CGPS STATIONS (OEOC) AND (TRAK) HAVING A BEARING OF NORTH 19°21’49” EAST.

HORIZONTAL DATUM

COORDINATES SHOWN ARE BASED ON THE CALIFORNIA COORDINATE SYSTEM (CCS83), ZONE VI, NAD 83, OCS (2017.50) EPOCH ADJUSTMENT.

ALL DISTANCES SHOWN ARE GRID, UNLESS OTHERWISE NOTED. TO OBTAIN GROUND DISTANCE MULTIPLY A GRID DISTANCE BY 1.00004566.

COMBINATION FACTOR WAS HELD AT POINT NUMBER 407
N: 2189993.89’, E: 6119073.71’, ELEVATION= 459.45’

RECORD DISTANCES SHOWN HEREON ARE AS THEY APPEAR ON THE DOCUMENT OF RECORD. DISTANCES MAY BE EITHER GRID OR GROUND, AS PER SAID RECORD.

ALL DISTANCES ARE BASED ON THE U.S. SURVEY FOOT.

REFERENCES

- (R1) = RECORD OF SURVEY 2012–1066, R.S.B. 261/11–14
- (R2) = CORNER RECORD , C.R. 2020–2193
- (R3) = RECORD OF SURVEY 90–1127, R.S.B. 145/28–32
- (R4) = TRACT NO. 18184, M.M. 986/34–47
- (R5) = RECORD OF SURVEY 2011–1042, R.S.B. 254/21–36
- (R6) = TRACT NO. 17880, M.M. 945/1–15
- (R7) = DEED, INSTRUMENT NO. 201400013051, O.R.
- (R8) = TRACT NO. 17202, M.M. 967/30–36
- (R9) = DEED, INSTRUMENT NO. 200500536290, O.R.
- (R10) = RECORD OF SURVEY 97–1038, R.S.B. 171/1–49
- (R11) = PARCEL MAP NO. 98–192, P.M.B. 313/37–43
- (R12) = PARCEL MAP NO. 90–226, P.M.B. 260/23–25
- (R13) = DEED, INSTRUMENT NO. 198600597360, O.R.
- (R14) = DEED, INSTRUMENT NO. 199600605850, O.R.
- (R15) = DEED, BOOK 12057, PAGE 1904, RECORDED 1977, O.R.
- (R16) = DEED, INSTRUMENT NO. 200900655591, O.R.
- (R17) = DEED, INSTRUMENT NO. 201300109106, O.R.
- (R18) = RECORD OF SURVEY, R.S.B. 54/14
- (R19) = RECORD OF SURVEY 94–1032, R.S.B. 151/42–45
- (R20) = TRACT NO. 18022, M.M. 964/1–37
- (R21) = RECORD OF SURVEY 2007–1206, R.S.B. 225/29–42
- (R22) = DEED, INSTRUMENT NO. 201400191199, O.R.
- (R23) = DEED, INSTRUMENT NO. 201400191200, O.R.
- (R24) = LEGAL DESCRIPTION, LD 2013–027 PARCEL 163
- (R25) = LEGAL DESCRIPTION, LD 2013–027 PARCEL 159

NOTES

REFERENCE DOCUMENTS IN THE REFERENCE LEGEND AND EASEMENT NOTES ARE LIVE HYPERLINKS TO SAID DOCUMENT.

RECORDS (R24) AND (R25) WERE NOT FOUND ON FILE IN OFFICIAL RECORDS.

MONUMENT NOTES

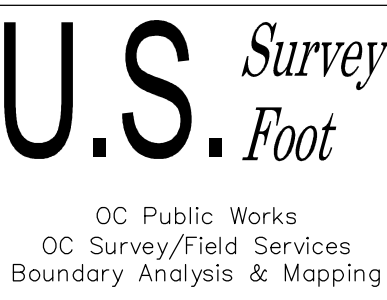
- [1](#) FOUND SPIKE & WASHER STAMPED "LS 5134" PER (R1), FLUSH IN AC, ACCEPTED AS THE INTERSECTION OF IRVINE BLVD & ALTON PKWY.
- [2](#) FOUND PUNCHED SPIKE & WASHER STAMPED "LS 5134" PER (R1), FLUSH IN AC, ACCEPTED AS POINT IN CENTERLINE B.C. OF ALTON PKWY.
- [3](#) FOUND 2" I.P. W/ TAG STAMPED "LS 5143" PER (R1), DN 0.3' IN DIRT, ACCEPTED AS POINT IN CENTERLINE E.C. OF ALTON PKWY.
- [4](#) FOUND SPIKE & WASHER PER (R1), FLUSH IN AC, ACCEPTED AS A POINT IN THE CENTERLINE OF ALTON PKWY.
- [5](#) FOUND 2" I.P. W/ TAG STAMPED "LS 5143" PER (R1), DN 0.2' IN DIRT, ACCEPTED AS POINT IN CENTERLINE B.C. OF ALTON PKWY.
- [6](#) FOUND 2" I.P. W/ TAG STAMPED "LS 5143" PER (R1), DN 0.2' IN DIRT, ACCEPTED AS POINT IN CENTERLINE E.C. OF ALTON PKWY.
- [7](#) FOUND 1" I.P. W/ TAG STAMPED "LS 5134" PER (R1), DN 0.2' IN DIRT, ACCEPTED AS THE NORTH CORNER OF THE JAMES A. MUSICK FACILITY.
- [8](#) FOUND SPIKE & WASHER STAMPED "LS 5134" PER (R1), FLUSH IN AC, S49°16'33"E 0.11' FROM THE WEST CORNER OF THE JAMES A. MUSICK FACILITY.
- [9](#) FOUND MAG NAIL & 1 1/2" WASHER STAMPED "LS 6469" PER (R2), FLUSH IN AC, ACCEPTED AS POINT IN CENTERLINE E.C. OF IRVINE BLVD.
- [10](#) FOUND 2" I.P. W/ MAG NAIL & OCS WASHER PER (R3), DN 0.4' IN DIRT, ACCEPTED AS POINT IN CENTERLINE OF IRVINE BLVD.
- [11](#) FOUND 2" I.P. W/ TACK & TAG STAMPED "LS 8639" PER (R4), DN 0.1' IN DIRT, ACCEPTED AS POINT IN CENTERLINE B.C. OF IRVINE BLVD.
- [12](#) FOUND SQUARE HEAD SPIKE & 1 1/2" WASHER STAMPED "LS 8639" PER (R4), DN 0.1' IN AC, ACCEPTED AS POINT IN CENTERLINE E.C. OF IRVINE BLVD.
- [13](#) FOUND SPIKE & 1 1/2" WASHER STAMPED "LS 8639" PER (R6), FLUSH IN AC, S40°40'38"W 0.04' FROM THE CENTERLINE OF IRVINE BLVD.
- [14](#) FOUND SPIKE & 1 1/2" WASHER STAMPED "LS 8639" PER (R8), FLUSH IN AC, ACCEPTED AS THE CENTERLINE INTERSECTION OF IRVINE BLVD & MERIT ST.
- [15](#) FOUND SQUARE HEAD SPIKE & 1 1/2" WASHER STAMPED "LS 8639" PER (R20), FLUSH IN AC, ACCEPTED AS A POINT ON CENTERLINE OF IRVINE BLVD.
- [16](#) FOUND 1 1/2" ALUM CAPPED REBAR STAMPED "LS 8639" PER (R8), ACCEPTED AS THE POINT OF TRUE POINT OF BEGINNING FOR PARCEL II–F OF (R9).
- [17](#) FOUND 2" I.P. W/ 1 1/2" OCS TAG PER (R10), FLUSH IN DIRT, ACCEPTED AS ANGLE POINT IN N'LY LINE OF PARCEL II–F OF (R9).
- [18](#) FOUND 2" I.P. W/ 1 1/2" OCS TAG PER (R10), UP 0.2' IN DIRT, ACCEPTED AS ANGLE POINT IN N'LY LINE OF PARCEL II–F OF (R9).
- [19](#) FOUND 2" I.P. W/ 1 1/2" OCS TAG PER (R10), DN 0.2' IN DIRT, ACCEPTED AS ANGLE POINT IN PARCEL II–F OF (R9).
- [20](#) FOUND 2" I.P. W/ 1 1/2" OCS TAG PER (R10), DN 0.5' IN DIRT, ACCEPTED AS ANGLE POINT IN PARCEL II–F OF (R9).
- [21](#) FOUND 2" I.P. W/ 1 1/2" OCS TAG PER (R10), FLUSH IN DIRT, ACCEPTED AS ANGLE POINT IN PARCEL II–F OF (R9). POINT ALSO BEING THE POINT OF BEGINNING FOR PARCEL II–F–A OF (R7).
- [22](#) FOUND 2" I.P. W/ 1 1/2" OCS TAG PER (R10), DN 0.5' IN DIRT, ACCEPTED AS ANGLE POINT IN PARCEL II–F OF (R9).
- [23](#) FOUND 2" I.P. W/ 1 1/2" OCS TAG PER (R10), DN 1.0' IN DIRT, ACCEPTED THE N'LY CORNER OF PARCEL 102 OF (R14).
- [24](#) FOUND 1" I.P. W/ TAG STAMPED "LS 5134" PER (R1), FLUSH IN DIRT, N40°43'40"E 0.04' FROM SE'LY LINE OF U.S. M.C.A.S. EL TORO PROPERTY PER (R10).
- [25](#) FOUND LEAD TACK & OCS TAG PER (R10), FLUSH IN CONCRETE FOOTING, ACCEPTED AS POINT IN SE'LY LINE OF U.S. M.C.A.S. EL TORO PROPERTY PER (R10).
- [26](#) FOUND 1" I.P. W/ TAG STAMPED "LS 4691" PER (R11), DN 0.3' IN DIRT, ACCEPTED AS NORTHEAST CORNER OF LOT 9 OF (R11).
- [27](#) FOUND 2" I.P. W/ TAG STAMPED "LS 4691" PER (R12), DN 0.4' IN DIRT, ACCEPTED AS THE NORTH CORNER OF PARCEL 1 OF (R12).
- [28](#) FOUND LEAD & 3/4" TAG STAMPED "LS 5134" PER (R1), FLUSH IN CONCRETE, N07°22'13"W 0.23' FROM THE INTERSECTION OF THE W'LY CORNER OF PARCEL 1 OF (R12) AND THE E'LY RIGHT OF WAY OF IRVINE BLVD.
- [29](#) FOUND 2" I.P. W/ NO TAG IN LIEU OF 2" I.P. W/ O.C.S. BRASS DISK AND NAIL PER (R19), DN 0.3' IN DIRT, ACCEPTED AS THE SOUTH CORNER OF THE JAMES A. MUSICK FACILITY.

EASEMENT NOTES

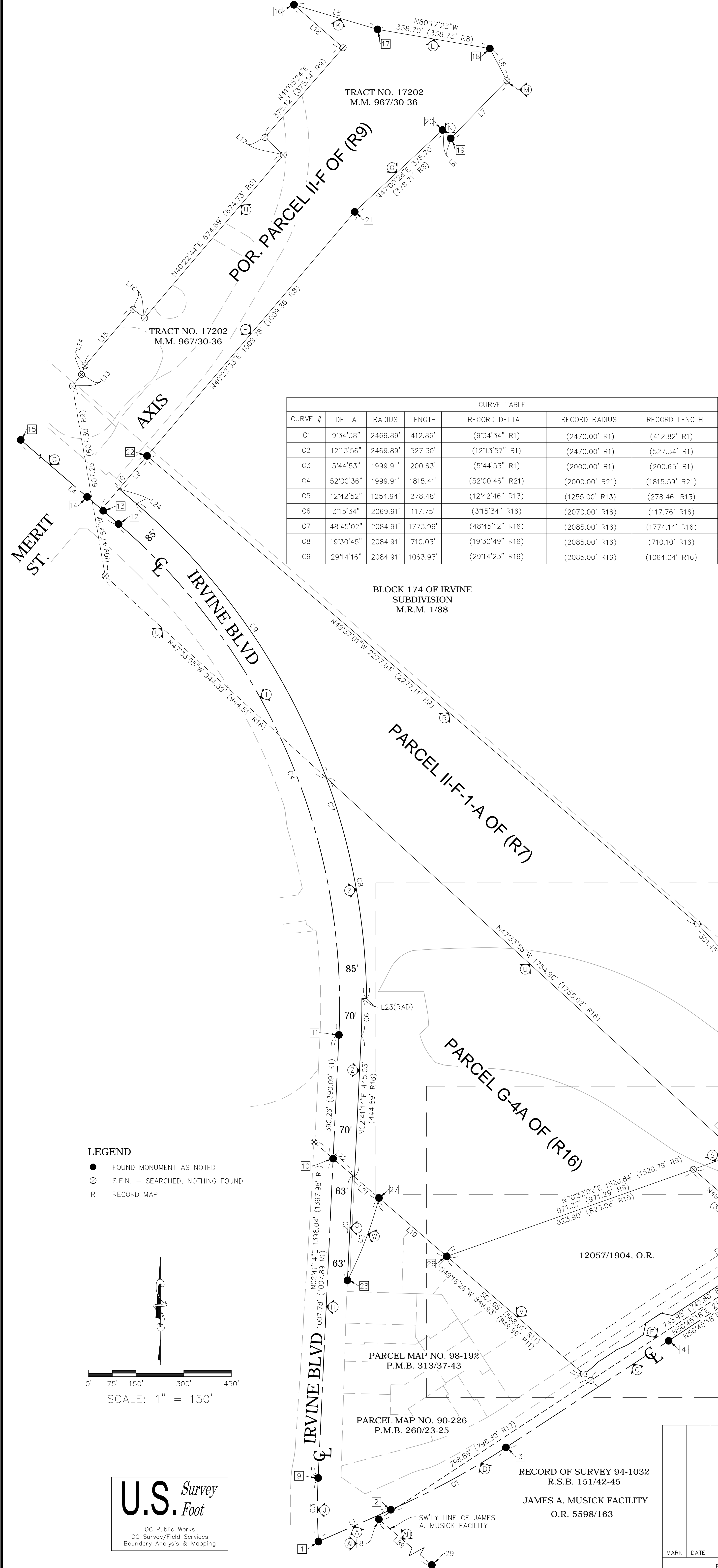
- [1](#) EASEMENT GRANTED TO O.C.F.C.D. FOR UTILITY PURPOSES WITHIN PARCEL 502.1, FACILITY F20, INSTRUMENT NO. 199700126818, O.R.
- [2](#) EASEMENT GRANTED TO O.C.F.C.D. FOR UTILITY PURPOSES WITHIN PARCEL 502, FACILITY F20, INSTRUMENT NO. 199700126818, O.R.
- [3](#) EASEMENT GRANTED TO O.C.F.C.D. FOR FLOOD CONTROL AND WATER CONSERVATION PURPOSES WITHIN PARCEL 501A, FACILITY F20, INSTRUMENT NO. 199700126816, O.R.
- [4](#) EASEMENT GRATED TO O.C.F.C.D. FOR CONSTRUCTION PURPOSES WITHIN PARCEL 501.1A, FACILITY F20, INSTRUMENT NO. 199700126819, O.R.

ESTABLISHMENT NOTES

- [A](#) ESTABLISHED THE CENTERLINE OF ALTON PKWY BY HOLDING A LINE BETWEEN MONUMENTS [1](#) & [2](#) PER (R1).
- [B](#) ESTABLISHED THE CENTERLINE OF ALTON PKWY BY HOLDING A LINE BETWEEN MONUMENTS [2](#) & [3](#) RECORD RADIUS PER (R1).
- [C](#) ESTABLISHED THE CENTERLINE OF ALTON PKWY BY HOLDING A LINE BETWEEN MONUMENTS [3](#) & [5](#) PER (R1).
- [D](#) ESTABLISHED THE CENTERLINE OF ALTON PKWY BY HOLDING A LINE BETWEEN MONUMENTS [5](#) & [6](#) RECORD RADIUS PER (R1).
- [E](#) ESTABLISHED THE SW'LY LINE OF U.S. M.C.A.S. EL TORO PROPERTY PER (R10) BY HOLDING MONUMENTS [23](#) & [25](#) .
- [F](#) ESTABLISHED THE NW'LY LINE OF THE JAMES A. MUSICK FACILITY BY HOLDING A LINE PARALLEL WITH & PERPENDICULAR 30' PER (R19) NW'LY OF LINE ESTABLISHMENT NOTE [C](#) .
- [G](#) ESTABLISHED THE CENTERLINE OF IRVINE BLVD BY HOLDING A LINE BETWEEN MONUMENTS [12](#) & [15](#) PER (R8).
- [H](#) ESTABLISHED THE CENTERLINE OF IRVINE BLVD BY HOLDING A LINE BETWEEN MONUMENTS [9](#) & [11](#) PER (R1).
- [I](#) ESTABLISHED THE CENTERLINE OF IRVINE BLVD BY HOLDING RECORD RADIUS OF 2000' PER (R5) AND TANGENT TO LINE ESTABLISHMENTS [C](#) AND [D](#) .
- [J](#) ESTABLISHED THE CENTERLINE OF IRVINE BLVD BY HOLDING RECORD RADIUS OF 2000' PER (R1) AND TANGENT TO LINE ESTABLISHMENT NOTE [C](#) .
- [K](#) ESTABLISHED THE N'LY BOUNDARY OF PARCEL II–F OF (R9) BY HOLDING A LINE BETWEEN MONUMENTS [16](#) & [17](#) PER (R8)
- [L](#) ESTABLISHED THE N'LY BOUNDARY OF PARCEL II–F OF (R9) BY HOLDING A LINE BETWEEN MONUMENTS [17](#) & [18](#) PER (R8)
- [M](#) ESTABLISHED THE E'LY BOUNDARY OF PARCEL II–F OF (R9) BY HOLDING RECORD ANGLES PER (R9) FROM LINE ESTABLISHMENTS [C](#) AND [D](#) .
- [N](#) ESTABLISHED THE S'LY BOUNDARY OF PARCEL II–F OF (R9) BY HOLDING A LINE BETWEEN MONUMENTS [19](#) & [20](#) PER (R8)
- [O](#) ESTABLISHED THE S'LY BOUNDARY OF PARCEL II–F OF (R9) BY HOLDING A LINE BETWEEN MONUMENTS [20](#) & [21](#) PER (R8)
- [P](#) ESTABLISHED THE S'LY BOUNDARY OF PARCEL II–F OF (R9) BY HOLDING A LINE BETWEEN MONUMENTS [21](#) & [22](#) PER (R8)
- [Q](#) ESTABLISHED POINT ON N'LY BOUNDARY PARCEL II–F OF (R9) BY HOLDING A RECORD DISTANCE OF 77.98' PER (R10) NW'LY ALONG LINE ESTABLISHMENT [E](#) FROM MONUMENT NOTE [22](#) .
- [R](#) ESTABLISHED NE'LY BOUNDARY OF PARCEL II–F–1–A OF (R23) BY LEAST SQUARE ADJUSTMENT BETWEEN MONUMENT [22](#) AND ESTABLISHMENT NOTE [C](#) PER (R9).
- [S](#) ESTABLISHED THE SE'LY LINE OF U.S. M.C.A.S. EL TORO PER (R10) PROPERTY BY HOLDING A LINE BETWEEN MONUMENTS [23](#) & [28](#) .
- [T](#) ESTABLISHED THE SOUTH CORNER OF PARCEL II–F OF (R9) HOLDING RECORD DISTANCE ALONG LINE ESTABLISHMENT [S](#) FROM MONUMENT [23](#) PER (R9).
- [U](#) ESTABLISHED THE SW'LY AND NW'LY BOUNDARY OF PARCEL II–F OF (R9) BY LEAST SQUARE ADJUSTMENT BETWEEN MONUMENT [16](#) AND ESTABLISHMENT NOTE [I](#) PER (R9).
- [V](#) ESTABLISHED THE NE'LY LINE OF PARCEL 1 OF (R12) BY HOLDING THE SE'LY PROLONGATION OF A LINE BETWEEN MONUMENT NOTES [26](#) AND [27](#) TO IT'S SE'LY TERMINUS WITH THE NW'LY RIGHT OF WAY OF ALTON PKWY PER (R11).
- [W](#) ESTABLISHED THE NW'LY LINE OF PARCEL 1 OF (R12) HOLDING RECORD CURVE DATA PER (R13) SW'LY FROM MONUMENT NOTE [27](#) TO THE E'LY RIGHT OF WAY OF IRVINE AVE.
- [X](#) ESTABLISHED THE SW'LY OF PARCEL 102 OF (R14) HOLDING RECORD COURSE ALONG LINE ESTABLISHMENT [C](#) FROM MONUMENT [7](#) PER (R14) & (R15).
- [Y](#) ESTABLISHED THE E'LY RIGHT OF WAY OF IRVINE BLVD HOLDING A LINE PARALLEL AND 63' PER (R1) E'LY FROM ESTABLISHMENT NOTE [C](#) .
- [Z](#) ESTABLISHED THE E'LY LINE OF PARCEL G–4A OF (R16) BY HOLDING RECORD COURSES PER (R16).
- [AA](#) ESTABLISHED THE SE'LY LINE OF PARCEL II–F–1 OF (R17) BY HOLDING A RECORD ANGLE PER (R17) FROM LINE ESTABLISHMENT [S](#) AT ESTABLISHMENT NOTE [C](#) .
- [AB](#) ESTABLISHED THE NW'LY RIGHT OF WAY OF ALTON PKWY BY HOLDING A LINE PARALLEL AND 60' PER (R1) NW'LY FROM ESTABLISHMENT NOTES [C](#) & [D](#) .
- [AC](#) ESTABLISHED NW'LY RIGHT OF WAY OF ALTON PKWY BY HOLDING RECORD COURSES PER (R22) NE'LY FROM THE INTERSECTION OF LINE ESTABLISHMENTS [C](#) AND [D](#) .
- [AD](#) ESTABLISHED NW'LY RIGHT OF WAY OF ALTON PKWY BY HOLDING RECORD COURSES PER (R23) SW'LY FROM THE INTERSECTION OF LINE ESTABLISHMENTS [E](#) AND [D](#) .
- [AE](#) ESTABLISHED PARCEL 159 OF (R25) BY HOLDING RECORD COURSES PER (R25) SW'LY FROM THE INTERSECTION ON LINE ESTABLISHMENTS [E](#) AND [D](#) .
- [AF](#) ESTABLISHED PARCEL 163 OF (R24) HOLD RECORD COURSES PER (R24) N'LY FROM MONUMENT NOTE [5](#) .
- [AG](#) ESTABLISHED EXCEPTION AREA OF PARCEL 163 OF (R24) BY HOLDING RECORD COURSES PER (R24) FROM ESTABLISHMENT NOTE [AF](#) .
- [AH](#) ESTABLISHED THE SW'LY LINE OF THE JAMES A. MUSICK FACILITY BY HOLDING A LINE BETWEEN MONUMENTS [8](#) & [29](#) .
- [AI](#) ESTABLISHED THE WEST CORNER OF THE JAMES A. MUSICK FACILITY BY INTERSECTION OF LINE ESTABLISHMENTS [C](#) AND [AD](#) .



				COUNTY OF ORANGE OC PUBLIC WORKS/ENGINEERING SERVICES OC SURVEY/FIELD SERVICES/BOUNDARY ANALYSIS & MAPPING	
				ALTON PKWY WILDLIFE CORRIDOR	
				BOUNDARY NOTES	
				PROJECT LIMITS: FROM WEST OF IRVINE BOULEVARD	
MARK		DATE		TO ALTON PARKWAY	
				DATE OF SURVEY: 08/07/2020	BY: T. LOFGREEN
				MAPPING	BY: A. VU
				OFFICE CHECK	BY: M. LAFONTAINE, PLS
				FIELD CHECK	BY: T. LOFGREEN & PARTY
REVISIONS				SCALE: N/A	W.O. #EF21342
				FILE #1920PW-IN0027	
				FILE: ALTON PARKWAY WILDLIFE CORRIDOR_BNDY_2020.DWG	



NOTES

BOUNDARY LINES SHOWN WITHOUT BEARING AND DISTANCES ARE FOR GRAPHICAL PURPOSES ONLY.

REFERENCE DOCUMENTS IN THE REFERENCE LEGEND ARE LIVE HYPERLINKS TO SAID DOCUMENT.

MONUMENT SYMBOLS CONTAIN LIVE HYPERLINKS TO IMAGES, IF THEY EXIST, OF RESPECTIVE MONUMENT.

SEE SHEET 3 FOR EASEMENT, ESTABLISHMENT AND MONUMENT NOTES.

- REFERENCES**
- (R1) = RECORD OF SURVEY 2012-1066, R.S.B. 261/11-14
 - (R2) = CORNER RECORD , C.R. 2020-2193
 - (R3) = RECORD OF SURVEY 90-1127, R.S.B. 145/28-32
 - (R4) = TRACT NO. 18184, M.M. 986/34-47
 - (R5) = RECORD OF SURVEY 2011-1042, R.S.B. 254/21-36
 - (R6) = TRACT NO. 17880, M.M. 945/1-15
 - (R7) = DEED, INSTRUMENT NO. 201400013051, O.R.
 - (R8) = TRACT NO. 17202, M.M. 967/30-36
 - (R9) = DEED, INSTRUMENT NO. 200500536290, O.R.
 - (R10) = RECORD OF SURVEY 97-1038, R.S.B. 171/1-49
 - (R11) = PARCEL MAP NO. 98-192, P.M.B. 313/37-43
 - (R12) = PARCEL MAP NO. 90-226, P.M.B. 260/23-25
 - (R13) = DEED, INSTRUMENT NO. 198600597360, O.R.
 - (R14) = DEED, INSTRUMENT NO. 199600605850, O.R.
 - (R15) = DEED, BOOK 12057, PAGE 1904, RECORDED 1977, O.R.
 - (R16) = DEED, INSTRUMENT NO. 200900655591, O.R.
 - (R17) = DEED, INSTRUMENT NO. 201300109106, O.R.
 - (R18) = RECORD OF SURVEY, R.S.B. 54/14
 - (R19) = RECORD OF SURVEY 94-1032, R.S.B. 151/42-45
 - (R20) = TRACT NO. 18022, M.M. 964/1-37
 - (R21) = RECORD OF SURVEY 2007-1206, R.S.B. 225/29-42
 - (R22) = DEED, INSTRUMENT NO. 201400191199, O.R.
 - (R23) = DEED, INSTRUMENT NO. 201400191200, O.R.
 - (R24) = LEGAL DESCRIPTION, LD 2013-027 PARCEL 163
 - (R25) = LEGAL DESCRIPTION, LD 2013-027 PARCEL 159

LINE TABLE			
LINE #	BEARING	MEASURED DISTANCE	RECORD DISTANCE
L1	N66°19'56"E	249.44'	(249.52' R1)
L2	N49°16'20"W	222.28'	(222.28' R18)
L3	N49°16'20"W	1698.62'	(1698.06' R19)
L4	N49°19'22"W	1818.57'	(1818.66' R8)
L5	N73°36'45"W	274.70'	(274.74' R8)
L6	N28°00'29"W	114.33'	(114.34' R9)
L7	N44°10'20"E	253.87'	(253.88' R9)
L8	N43°47'15"W	36.96'	(36.96' R8)
L9	N40°22'33"E	136.28'	(136.28' R20)
L10	N40°22'33"E	221.28'	(221.28' R20)
L11	N74°22'34"E	103.60'	(103.60' R9)
L12	N49°16'20"W	77.98'	(77.98' R10)
L13	N37°49'30"E	46.49'	(46.49' R9)
L14	N22°13'03"E	29.55'	(29.55' R9)
L15	N40°22'44"E	233.72'	(233.74' R9)
L16	N52°44'01"W	45.54'	(45.54' R9)
L17	N46°14'38"W	80.05'	(80.06' R9)
L18	N48°54'36"W	205.65'	(205.66' R9)
L19	N49°16'26"W	281.98'	(281.98' R11)
L20	N02°41'14"E	332.04'	(332.05' R11)
L21	N49°16'26"W	110.55'	(110.59' R11)
L22	N49°16'26"W	159.98'	(159.99' R13)
L23	N89°25'40"E	15.00'	(15.00' R16)
L24	N49°19'22"W	71.36'	(71.37' R16)
L89	N49°16'33"W	2473.74'	(2473.76' R19)

LEGEND

- FOUND MONUMENT AS NOTED
- ⊗ S.F.N. - SEARCHED, NOTHING FOUND
- R RECORD MAP

SCALE: 1" = 150'

U.S. Survey

Foot

OC Public Works
OC Survey/Field Services
Boundary Analysis & Mapping

MARK

DATE

ITEM

REVISIONS

COUNTY OF ORANGE
OC PUBLIC WORKS/ENGINEERING SERVICES
OC SURVEY/FIELD SERVICES/BOUNDARY ANALYSIS & MAPPING

ALTON PKWY WILDLIFE CORRIDOR

BOUNDARY MAP

PROJECT LIMITS: FROM WEST OF IRVINE BOULEVARD

TO ALTON PARKWAY

DATE OF SURVEY: 08/07/2020

MAPPING

OFFICE CHECK

FIELD CHECK

SCALE: 1" = 150'

W.O. #EF21342

BY: T. LOFGREEN

BY: A. VU

BY: M. LAFONTAINE, PLS

BY: T. LOFGREEN & PARTY

FILE #1920PW-IN0027

FILE: ALTON PARKWAY WILDLIFE CORRIDOR_BNDY_2020.DWG

SHEET NO.

3

of

10

LINE TABLE			
LINE #	BEARING	MEASURED DISTANCE	RECORD DISTANCE
L11	N74°22'34"E	103.60'	(103.60' R9)
L12	N49°16'20"W	77.98'	(77.98' R10)
L25	N56°45'18"E	16.00'	(16.00' R22)
L26	N47°51'31"E	27.13'	(27.13' R22)
L27	N56°45'18"E	60.00'	(60.00' R22)
L28	N65°39'06"E	27.13'	(27.13' R22)
L29	N56°45'18"E	49.98'	—
L30	N11°45'18"E	36.77'	(36.77' R22)
L31	N56°45'18"E	58.00'	(58.00' R22)
L32	N78°14'42"W	36.77'	(36.77' R22)
L33	S33°14'42"E	0.17'	(0.17' R22)
L34	N48°48'42"E	16.01'	(16.01' R22)
L35	N56°45'18"E	36.00'	(36.00' R22)
L36	N64°41'54"E	16.01'	(16.01' R22)
L37	N33°14'42"W	0.17'	(0.17' R22)
L38	N56°45'18"E	49.13'	—
L39	N29°22'39"W	0.17'	(0.17' R23)
L40	N52°55'12"E	16.04'	(16.04' R23)
L41	N70°02'46"E	16.04'	(16.04' R23)
L42	N27°39'22"W	0.17'	(0.17' R23)

LINE TABLE			
LINE #	BEARING	MEASURED DISTANCE	RECORD DISTANCE
L43	N27°20'51"W	15.84'	(15.84' R25)
L44	N24°33'18"W	1.79'	(1.79' R25)
L45	N39°44'34"W	35.68'	(35.68' R25)
L46	N50°36'38"E	82.93'	(82.93' R25)
L47	N59°11'03"E	50.64'	(50.64' R25)
L48	N54°34'30"E	31.05'	(31.05' R25)
L49	N50°36'46"E	123.98'	(123.99' R25)
L50	N43°08'00"E	27.26'	(27.26' R25)
L51	N55°49'50"E	23.88'	(23.88' R25)
L52	N82°05'02"E	41.05'	(41.05' R25)
L53	N82°40'43"W	41.24'	(41.25' R25)
L54	N68°01'19"E	45.39'	(45.19' R25)
L55	N49°16'20"W	55.36'	(55.36' R25)
L85	N49°16'26"W	31.21'	(31.21' R11)
L86	N49°16'26"W	31.21'	—
L87	N49°17'33"W	31.22'	—
L88	N49°16'20"W	4.68'	—

REFERENCES

(R1) = RECORD OF SURVEY 2012-1066, R.S.B. 261/11-14
(R2) = CORNER RECORD , C.R. 2020-2193
(R3) = RECORD OF SURVEY 90-1127, R.S.B. 145/28-32
(R4) = TRACT NO. 18184, M.M. 986/34-47
(R5) = RECORD OF SURVEY 2011-1042, R.S.B. 254/21-36
(R6) = TRACT NO. 17880, M.M. 945/1-15
(R7) = DEED, INSTRUMENT NO. 201400013051, O.R.
(R8) = TRACT NO. 17202, M.M. 967/30-36
(R9) = DEED, INSTRUMENT NO. 200500536290, O.R.
(R10) = RECORD OF SURVEY 97-1038, R.S.B. 171/1-49
(R11) = PARCEL MAP NO. 98-192, P.M.B. 313/37-43
(R12) = PARCEL MAP NO. 90-226, P.M.B. 260/23-25
(R13) = DEED, INSTRUMENT NO. 198600597360, O.R.
(R14) = DEED, INSTRUMENT NO. 199600605850, O.R.
(R15) = DEED, BOOK 12057, PAGE 1904, RECORDED 1977, O.R.
(R16) = DEED, INSTRUMENT NO. 200900655591, O.R.
(R17) = DEED, INSTRUMENT NO. 201300109106, O.R.
(R18) = RECORD OF SURVEY, R.S.B. 54/14
(R19) = RECORD OF SURVEY 94-1032, R.S.B. 151/42-45
(R20) = TRACT NO. 18022, M.M. 964/1-37
(R21) = RECORD OF SURVEY 2007-1206, R.S.B. 225/29-42
(R22) = DEED, INSTRUMENT NO. 201400191199, O.R.
(R23) = DEED, INSTRUMENT NO. 201400191200, O.R.
(R24) = LEGAL DESCRIPTION, LD 2013-027 PARCEL 163
(R25) = LEGAL DESCRIPTION, LD 2013-027 PARCEL 159

PARCEL MAP NO. 98-192,
P.M.B. 313/37-43

NOTES

BOUNDARY LINES SHOWN WITHOUT BEARING AND DISTANCES ARE FOR GRAPHICAL PURPOSES ONLY.

REFERENCE DOCUMENTS IN THE REFERENCE LEGEND ARE LIVE HYPERLINKS TO SAID DOCUMENT.

MONUMENT SYMBOLS CONTAIN LIVE HYPERLINKS TO IMAGES, IF THEY EXIST, OF RESPECTIVE MONUMENT.

RECORDS (R24) AND (R25) WERE NOT FOUND ON FILE IN OFFICIAL RECORDS.

SEE SHEET 3 FOR EASEMENT, ESTABLISHMENT AND MONUMENT NOTES.

SEE SHEET 5

PARCEL G-4A OF (R16)

PARCEL II-F-1-A OF (R7)

BLOCK 174 OF IRVINE
SUBDIVISION
M.R.M. 1/88

199600605850, O.R.

PARCEL 102 OF (R14)
PARCEL 159 OF (R25)

RECORD OF SURVEY 94-1032
R.S.B. 151/42-45

JAMES A. MUSICK FACILITY

NW'LY LINE OF JAMES
A. MUSICK FACILITY

RECORD OF SURVEY 94-1032
R.S.B. 151/42-45

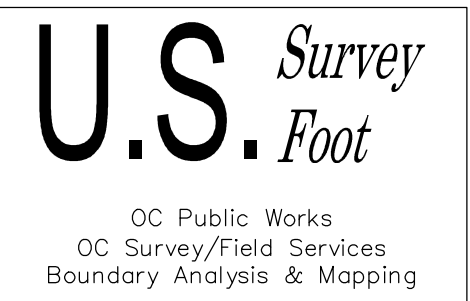
JAMES A. MUSICK FACILITY

NW'LY LINE OF JAMES
A. MUSICK FACILITY

LEGEND

- FOUND MONUMENT AS NOTED
- ⊗ S.F.N. - SEARCHED, NOTHING FOUND
- R RECORD MAP

0' 25' 50' 100' 150'
SCALE: 1" = 50'



CURVE TABLE						
CURVE #	DELTA	RADIUS	LENGTH	RECORD DELTA	RECORD RADIUS	RECORD LENGTH
C2	12°13'56"	2469.89'	527.30'	(12°13'57" R1)	(2470.00' R1)	(527.34' R1)
C10	8°53'47"	91.00'	14.13'	(8°53'47" R22)	(91.00' R22)	(14.13' R22)
C11	8°53'47"	59.00'	9.16'	(8°53'47" R22)	(59.00' R22)	(9.16' R22)
C12	8°53'47"	59.00'	9.16'	(8°53'47" R22)	(59.00' R22)	(9.16' R22)
C13	8°53'47"	91.00'	14.13'	(8°53'47" R22)	(91.00' R22)	(14.13' R22)
C14	7°56'36"	15.00'	2.08'	(7°56'36" R22)	(15.00' R22)	(2.08' R22)
C15	7°56'36"	15.00'	2.08'	(7°56'36" R22)	(15.00' R22)	(2.08' R22)
C16	7°56'36"	15.00'	2.08'	(7°56'36" R22)	(15.00' R22)	(2.08' R22)
C17	7°56'36"	15.00'	2.08'	(7°56'36" R22)	(15.00' R22)	(2.08' R22)
C18	3°52'03"	2529.89'	170.77'	—	—	—
C19	7°42'09"	15.00'	2.02'	(7°42'09" R23)	(15.00' R23)	(2.02' R23)
C20	8°09'21"	15.00'	2.14'	(8°09'21" R23)	(15.00' R23)	(2.13' R23)
C21	0°48'52"	2532.55'	36.00'	(0°48'52" R23)	(2532.67' R23)	(36.00' R23)
C22	8°09'21"	15.00'	2.14'	(8°09'21" R23)	(15.00' R23)	(2.13' R23)
C23	7°42'09"	15.00'	2.02'	(7°42'09" R23)	(15.00' R23)	(2.02' R23)
C24	2°33'15"	2529.89'	112.77'	—	—	—

			COUNTY OF ORANGE OC PUBLIC WORKS/ENGINEERING SERVICES OC SURVEY/FIELD SERVICES/BOUNDARY ANALYSIS & MAPPING				
			ALTON PKWY WILDLIFE CORRIDOR				
			BOUNDARY MAP				
			PROJECT LIMITS: FROM WEST OF IRVINE BOULEVARD TO ALTON PARKWAY				
			DATE OF SURVEY: 08/07/2020		BY: T. LOFGREEN		SHEET NO. 4 of 10
			MAPPING		BY: A. VU		
			OFFICE CHECK		BY: M. LAFONTAINE, PLS		
			FIELD CHECK		BY: T. LOFGREEN & PARTY		
			SCALE: 1" = 50'		W.O. #EF21342		
			MARK	DATE	ITEM	FILE: ALTON PARKWAY WILDLIFE CORRIDOR_BNDY_2020.DWG	
REVISIONS							

REFERENCES

- (R1) = RECORD OF SURVEY 2012-1066, R.S.B. 261/11-14
(R2) = CORNER RECORD , C.R. 2020-2193
(R3) = RECORD OF SURVEY 90-1127, R.S.B. 145/28-32
(R4) = TRACT NO. 18184, M.M. 986/34-47
(R5) = RECORD OF SURVEY 2011-1042, R.S.B. 254/21-36
(R6) = TRACT NO. 17880, M.M. 945/1-15
(R7) = DEED, INSTRUMENT NO. 201400013051, O.R.
(R8) = TRACT NO. 17202, M.M. 967/30-36
(R9) = DEED, INSTRUMENT NO. 200500536290, O.R.
(R10) = RECORD OF SURVEY 97-1038, R.S.B. 171/1-49
(R11) = PARCEL MAP NO. 98-192, P.M.B. 313/37-43
(R12) = PARCEL MAP NO. 90-226, P.M.B. 260/23-25
(R13) = DEED, INSTRUMENT NO. 198600597360, O.R.
(R14) = DEED, INSTRUMENT NO. 199600605850, O.R.
(R15) = DEED, BOOK 12057, PAGE 1904, RECORDED 1977, O.R.
(R16) = DEED, INSTRUMENT NO. 200900655591, O.R.
(R17) = DEED, INSTRUMENT NO. 201300109106, O.R.
(R18) = RECORD OF SURVEY, R.S.B. 54/14
(R19) = RECORD OF SURVEY 94-1032, R.S.B. 151/42-45
(R20) = TRACT NO. 18022, M.M. 964/1-37
(R21) = RECORD OF SURVEY 2007-1206, R.S.B. 225/29-42
(R22) = DEED, INSTRUMENT NO. 201400191199, O.R.
(R23) = DEED, INSTRUMENT NO. 201400191200, O.R.
(R24) = LEGAL DESCRIPTION, LD 2013-027 PARCEL 163
(R25) = LEGAL DESCRIPTION, LD 2013-027 PARCEL 159

SEE SHEET 4

BLOCK 174 OF IRVINE
SUBDIVISION
M.R.M. 1/88
O.R. 2567/100

- NOTES
- BOUNDARY LINES SHOWN WITHOUT BEARING AND DISTANCES ARE FOR GRAPHICAL PURPOSES ONLY.
- REFERENCE DOCUMENTS IN THE REFERENCE LEGEND ARE LIVE HYPERLINKS TO SAID DOCUMENT.
- MONUMENT SYMBOLS CONTAIN LIVE HYPERLINKS TO IMAGES, IF THEY EXIST, OF RESPECTIVE MONUMENT.
- RECORDS (R24) AND (R25) WERE NOT FOUND ON FILE IN OFFICIAL RECORDS.
- SEE SHEET 3 FOR EASEMENT, ESTABLISHMENT AND MONUMENT NOTES.

LEGEND

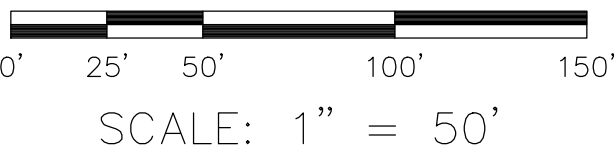
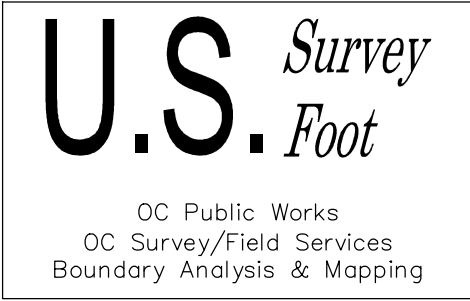
- FOUND MONUMENT AS NOTED
⊗ S.F.N. - SEARCHED, NOTHING FOUND
R RECORD MAP

LINE TABLE			
LINE #	BEARING	MEASURED DISTANCE	RECORD DISTANCE
L56	N14°39'56"W	192.32'	(192.33' R24)
L57	N48°17'59"E	59.31'	(59.31' R24)
L58	N21°12'27"E	50.66'	(50.66' R24)
L59	N59°14'17"W	92.51'	(92.51' R24)
L60	N82°39'58"W	98.33'	(98.33' R24)
L61	N88°45'47"E	74.73'	(74.73' R24)
L62	N87°39'04"E	71.48'	(71.48' R24)
L63	N86°13'44"E	57.02'	(57.02' R24)
L64	N27°35'14"E	77.81'	(77.81' R24)
L65	N90°00'00"E	143.15'	(143.16' R24)
L66	N10°04'43"W	72.47'	(72.47' R24)
L67	N04°21'15"W	36.10'	(36.10' R24)
L68	N47°50'09"E	38.63'	(38.63' R24)
L69	N73°47'57"W	28.80'	(28.80' R24)
L70	N84°50'17"W	63.72'	(63.72' R24)

LINE TABLE			
LINE #	BEARING	MEASURED DISTANCE	RECORD DISTANCE
L71	N86°49'24"W	79.25'	(79.25' R24)
L72	N55°51'43"W	223.94'	(223.95' R24)
L73	N62°34'05"W	68.80'	(68.80' R24)
L74	N67°38'30"W	82.76'	(82.76' R24)
L75	N35°24'39"E	17.88'	(17.88' R24)
L76	N31°51'57"E	99.55'	(99.55' R24)
L77	N37°29'19"E	17.88'	(17.88' R24)
L78	N82°26'20"E	30.85'	(30.85' R24)
L79	N41°42'01"W	42.70'	(42.70' R24)
L80	N25°52'17"E	99.91'	(99.92' R24)
L81	N50°38'29"E	26.82'	(26.82' R24)
L82	N33°38'53"W	75.37'	(75.37' R24)
L83	N50°38'29"E	41.82'	(41.82' R24)
L84	N45°04'09"W	75.37'	(75.37' R24)

CURVE TABLE						
CURVE #	DELTA	RADIUS	LENGTH	RECORD DELTA	RECORD RADIUS	RECORD LENGTH
C25	26°48'46"	187.99'	87.97'	(26°48'46" R24)	(188.00' R24)	(87.98' R24)
C26	37°41'57"	1129.95'	743.48'	(37°41'57" R24)	(1130.00' R24)	(743.51' R24)
C27	49°14'17"	115.99'	99.68'	(49°14'17" R24)	(116.00' R24)	(99.69' R24)
C28	31°50'49"	188.99'	105.05'	(31°50'49" R24)	(189.00' R24)	(105.05' R24)
C29	30°57'41"	779.96'	421.48'	(30°57'41" R24)	(780.00' R24)	(421.50' R24)
C30	6°35'45"	799.96'	92.09'	(6°35'45" R24)	(800.00' R24)	(92.09' R24)
C31	48°02'48"	124.99'	104.82'	(48°02'48" R24)	(125.00' R24)	(104.82' R24)
C32	35°53'53"	133.99'	83.95'	(35°53'53" R24)	(134.00' R24)	(83.96' R24)
C33	55°51'39"	25.00'	24.37'	(55°51'39" R24)	(25.00' R24)	(24.37' R24)

PARCEL MAP NO. 98-192,
P.M.B. 313/37-43



SEE SHEET 4

PARCEL II-F-1-A OF (R7)

PARCEL 163 OF (R24)

PARCEL G-4A OF (R16)

WATER
OUTLET
STRUCTURE
PER (R24)

US NAVY, EL
TORO LIFOC
PARCEL II-F-2
PER (R24)

PARCEL 102 OF (R14)

ALTON PARKWAY

JAMES A. MUSICK
FACILITY

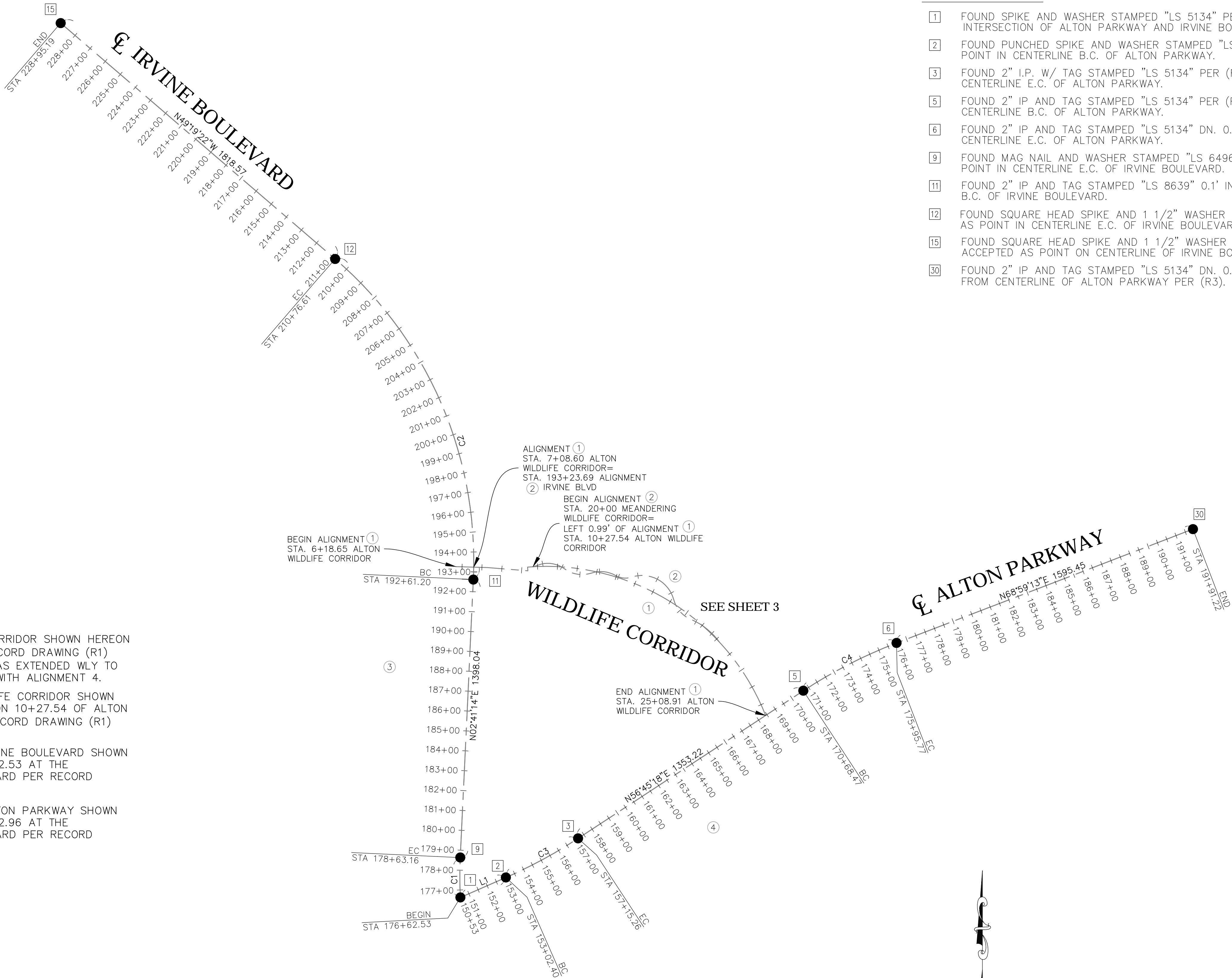
			COUNTY OF ORANGE OC PUBLIC WORKS/ENGINEERING SERVICES OC SURVEY/FIELD SERVICES/BOUNDARY ANALYSIS & MAPPING			
			ALTON PKWY WILDLIFE CORRIDOR			
			BOUNDARY MAP			
			PROJECT LIMITS: FROM WEST OF IRVINE BOULEVARD			
			TO ALTON PARKWAY			
			DATE OF SURVEY: 08/07/2020		BY: T. LOFGREEN	
			MAPPING		BY: A. VU	
			OFFICE CHECK		BY: M. LAFONTAINE, PLS	
			FIELD CHECK		BY: T. LOFGREEN & PARTY	
			SCALE: 1" = 50'		W.O. #EF21342	
					FILE #1920PW-IN0027	
			FILE: ALTON PARKWAY WILDLIFE CORRIDOR_BNDY_2020.DWG			
MARK	DATE	ITEM				
REVISIONS						

BASIS OF STATIONING

- ① THE BASIS OF STATIONING FOR THE ALTON WILDLIFE CORRIDOR SHOWN HEREON WAS ESTABLISHED BY HOLDING STATION 10+00 PER RECORD DRAWING (R1) AND INCREASING S'ELY THEREFROM. SAID ALIGNMENT WAS EXTENDED WLY TO INTERSECT WITH ALIGNMENT 3 AND ELY TO INTERSECT WITH ALIGNMENT 4.
- ② THE BASIS OF STATIONING FOR THE MEANDERING WILDLIFE CORRIDOR SHOWN HEREON WAS ESTABLISHED HOLDING BY HOLDING STATION 10+27.54 OF ALTON WILDLIFE CORRIDOR AND OFFSETTING 0.99' LEFT PER RECORD DRAWING (R1) AND INCREASING S'ELY THEREFROM.
- ③ THE BASIS OF STATIONING FOR THE CENTERLINE OF IRVINE BOULEVARD SHOWN HEREON WAS ESTABLISHED BY HOLDING STATION 176+62.53 AT THE INTERSECTION OF ALTON PARKWAY AND IRVINE BOULEVARD PER RECORD DRAWING (R1) INCREASING N'WLY THEREFROM.
- ④ THE BASIS OF STATIONING FOR THE CENTERLINE OF ALTON PARKWAY SHOWN HEREON WAS ESTABLISHED BY HOLDING STATION 150+52.96 AT THE INTERSECTION OF ALTON PARKWAY AND IRVINE BOULEVARD PER RECORD DRAWING (R1) INCREASING N'ELY THEREFROM.

REFERENCES

- (R1) ALTON PARKWAY WILDLIFE CORRIDOR PLAN 03/2009
- (R2) TRACT NO. 19038, M.M. 988/29-32
- (R3) RECORD OF SURVEY 2012-1066, R.S.B. 261/11-14
- (R4) CORNER RECORD, C.R. 2020-2193



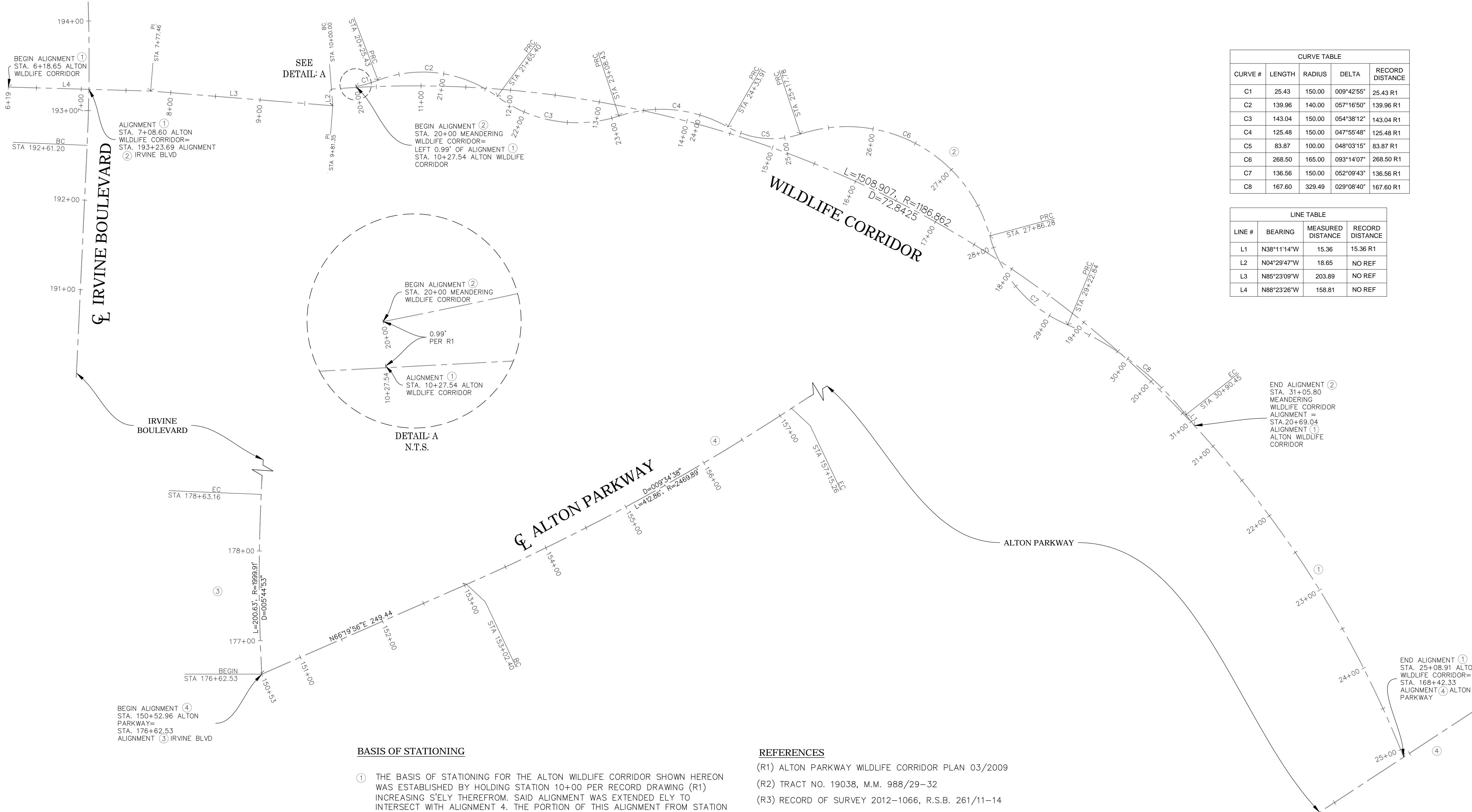
MONUMENT NOTES

- ① FOUND SPIKE AND WASHER STAMPED "LS 5134" PER (R3) ACCEPTED AS CENTERLINE INTERSECTION OF ALTON PARKWAY AND IRVINE BOULEVARD.
- ② FOUND PUNCHED SPIKE AND WASHER STAMPED "LS 5134" PER (R3), FLUSH IN AC, ACCEPTED AS POINT IN CENTERLINE B.C. OF ALTON PARKWAY.
- ③ FOUND 2" I.P. W/ TAG STAMPED "LS 5134" PER (R3), DN. 0.3' IN DIRT, ACCEPTED AS POINT IN CENTERLINE E.C. OF ALTON PARKWAY.
- ⑤ FOUND 2" IP AND TAG STAMPED "LS 5134" PER (R3), DN. 0.2' IN DIRT, ACCEPTED AS POINT IN CENTERLINE B.C. OF ALTON PARKWAY.
- ⑥ FOUND 2" IP AND TAG STAMPED "LS 5134" DN. 0.2' IN DIRT PER (R3) ACCEPTED AS POINT IN CENTERLINE E.C. OF ALTON PARKWAY.
- ⑨ FOUND MAG NAIL AND WASHER STAMPED "LS 6496" PER (R4) FLUSH IN AC ACCEPTED AS POINT IN CENTERLINE E.C. OF IRVINE BOULEVARD.
- ⑪ FOUND 2" IP AND TAG STAMPED "LS 8639" 0.1' IN DIRT. PER (R2) ACCEPTED AS POINT IN CENTERLINE B.C. OF IRVINE BOULEVARD.
- ⑫ FOUND SQUARE HEAD SPIKE AND 1 1/2" WASHER STAMPED "LS 8639" PER (R2), DN 0.1' IN AC, ACCEPTED AS POINT IN CENTERLINE E.C. OF IRVINE BOULEVARD.
- ⑮ FOUND SQUARE HEAD SPIKE AND 1 1/2" WASHER STAMPED "LS 8639" PER (R2), FLUSH IN AC, ACCEPTED AS POINT ON CENTERLINE OF IRVINE BOULEVARD.
- ⑳ FOUND 2" IP AND TAG STAMPED "LS 5134" DN. 0.2' IN DIRT. PER (R3) N 22°40'57"W 0.07' FROM CENTERLINE OF ALTON PARKWAY PER (R3).

CURVE TABLE				
CURVE #	LENGTH	RADIUS	DELTA	RECORD DISTANCE
C1	200.63	1999.91	005°44'53"	200.65 R3
C2	1815.41	1999.91	052°00'36"	1815.59 R2
C3	412.86	2469.89	009°34'38"	412.82 R3
C4	527.30	2469.88	012°13'56"	527.34 R3

LINE TABLE			
LINE #	BEARING	MEASURED DISTANCE	RECORD DISTANCE
L1	N66°19'56"E	249.44	249.52 R3

			COUNTY OF ORANGE OC PUBLIC WORKS/ENGINEERING SERVICES OC SURVEY/FIELD SERVICES/BOUNDARY ANALYSIS & MAPPING				
			ALTON PKWY WILDLIFE CORRIDOR				
			ALIGNMENT MAP				
			PROJECT LIMITS: FROM WEST OF IRVINE BOULEVARD TO ALTON PARKWAY				
			DATE OF SURVEY: 08/07/2020		BY: T. LOFGREEN		SHEET NO. 6 of 10
			MAPPING		BY: R. BELTRAN		
			OFFICE CHECK		BY: M. LAFONTAINE, PLS		
			FIELD CHECK		BY: T. LOFGREEN & PARTY		
			SCALE: 1" = 40'		W.O. #EF21342		
			REVISIONS		FILE #1920PW-IN0027		
		FILE: ALTON PKWY WILDLIFE CORRIDOR_TOPO_2020.DWG					
MARK	DATE	ITEM					



CURVE TABLE				
CURVE #	LENGTH	RADIUS	DELTA	RECORD DISTANCE
C1	25.43	150.00	009°42'55"	25.43 R1
C2	139.96	140.00	057°16'50"	139.96 R1
C3	143.04	150.00	054°38'12"	143.04 R1
C4	125.48	150.00	047°55'48"	125.48 R1
C5	83.87	100.00	048°03'15"	83.87 R1
C6	268.50	165.00	093°14'07"	268.50 R1
C7	136.56	150.00	052°09'43"	136.56 R1
C8	167.60	329.49	029°08'40"	167.60 R1

LINE TABLE			
LINE #	BEARING	MEASURED DISTANCE	RECORD DISTANCE
L1	N38°11'14"W	15.36	15.36 R1
L2	N04°29'47"W	18.65	NO REF
L3	N85°23'09"W	203.89	NO REF
L4	N88°23'26"W	158.81	NO REF

BASIS OF STATIONING

- THE BASIS OF STATIONING FOR THE ALTON WILDLIFE CORRIDOR SHOWN HEREON WAS ESTABLISHED BY HOLDING STATION 10+00 PER RECORD DRAWING (R1) INCREASING S'ELY THEREFROM. SAID ALIGNMENT WAS EXTENDED ELY TO INTERSECT WITH ALIGNMENT 4. THE PORTION OF THIS ALIGNMENT FROM STATION 6+18.65 TO STATION 9+81.35 WAS DEVELOPED BY HOLDING EXISTING TOPOGRAPHIC FEATURES PER THIS SURVEY AND CONNECTING TO RECORD ALIGNMENT ② AS SHOWN HEREON.
- THE BASIS OF STATIONING FOR THE MEANDERING WILDLIFE CORRIDOR SHOWN HEREON WAS ESTABLISHED HOLDING BY HOLDING STATION 10+27.54 OF ALTON WILDLIFE CORRIDOR AND OFFSETTING 0.99' LEFT PER RECORD DRAWING (R1) AND INCREASING S'ELY THEREFROM.
- THE BASIS OF STATIONING FOR THE CENTERLINE OF IRVINE BOULEVARD SHOWN HEREON WAS ESTABLISHED BY HOLDING STATION 176+62.53 AT THE INTERSECTION OF ALTON PARKWAY AND IRVINE BOULEVARD PER RECORD DRAWING (R1) INCREASING N'WLY THEREFROM.
- THE BASIS OF STATIONING FOR THE CENTERLINE OF ALTON PARKWAY SHOWN HEREON WAS ESTABLISHED BY HOLDING STATION 150+52.96 AT THE INTERSECTION OF ALTON PARKWAY AND IRVINE BOULEVARD PER RECORD DRAWING (R1) INCREASING N'ELY THEREFROM.

REFERENCES

- (R1) ALTON PARKWAY WILDLIFE CORRIDOR PLAN 03/2009
(R2) TRACT NO. 19038, M.M. 988/29-32
(R3) RECORD OF SURVEY 2012-1066, R.S.B. 261/11-14
(R4) CORNER RECORD, C.R. 2020-2193

MARK	DATE	ITEM	COUNTY OF ORANGE OC PUBLIC WORKS/ENGINEERING SERVICES OC SURVEY/FIELD SERVICES/BOUNDARY ANALYSIS & MAPPING				
			ALTON PKWY WILDLIFE CORRIDOR				
			ALIGNMENT MAP				
			PROJECT LIMITS: FROM WEST OF IRVINE BOULEVARD TO ALTON PARKWAY				
			DATE OF SURVEY: 08/07/2020		BY: T. LOFGREEN		SHEET NO. 7 of 10
			MAPPING		BY: R. BELTRAN		
			OFFICE CHECK		BY: M. LAFONTAINE, PLS		
			FIELD CHECK		BY: T. LOFGREEN & PARTY		
			SCALE: 1" = 40'		W.O. #EF21342		
			REVISIONS		FILE #1920PW-IN0027		
		FILE: ALTON PKWY WILDLIFE CORRIDOR_TOPO_2020.DWG					

SYMBOL

Benchmark

Control Box Irrigation

Control Point

Gate, Double

Gate, Single

Guy Wire Anchor

Light Pole, Single

Manhole Storm Drain

Monitoring Well

Pipe Inlet/Outlet

Post

Sign Post

Tree

Utility Pole, Underground

Valve Water

LINE PATTERN KEY

Centerline

Concrete Wall

Edge of Concrete

Edge of Asphalt Pavement

Exposed Pipe

Fence Chainlink

Fence Post and Wire

Flowline

Grade Line

Guard Rail

Pipe underground

Hinge Point

Property Line

Right of Way

Striping

AREA PATTERN KEY

Concrete

Dirt

Gravel / Rip Rap

ABBREVIATION

AC

Asphalt Concrete

BC

Beginning of Curve

BM

Benchmark

CL

Centerline

CONC

Concrete

CP

Control Point

EL

Elevation

EC

End of Curve

FL

Flowline

FD

Found

INV

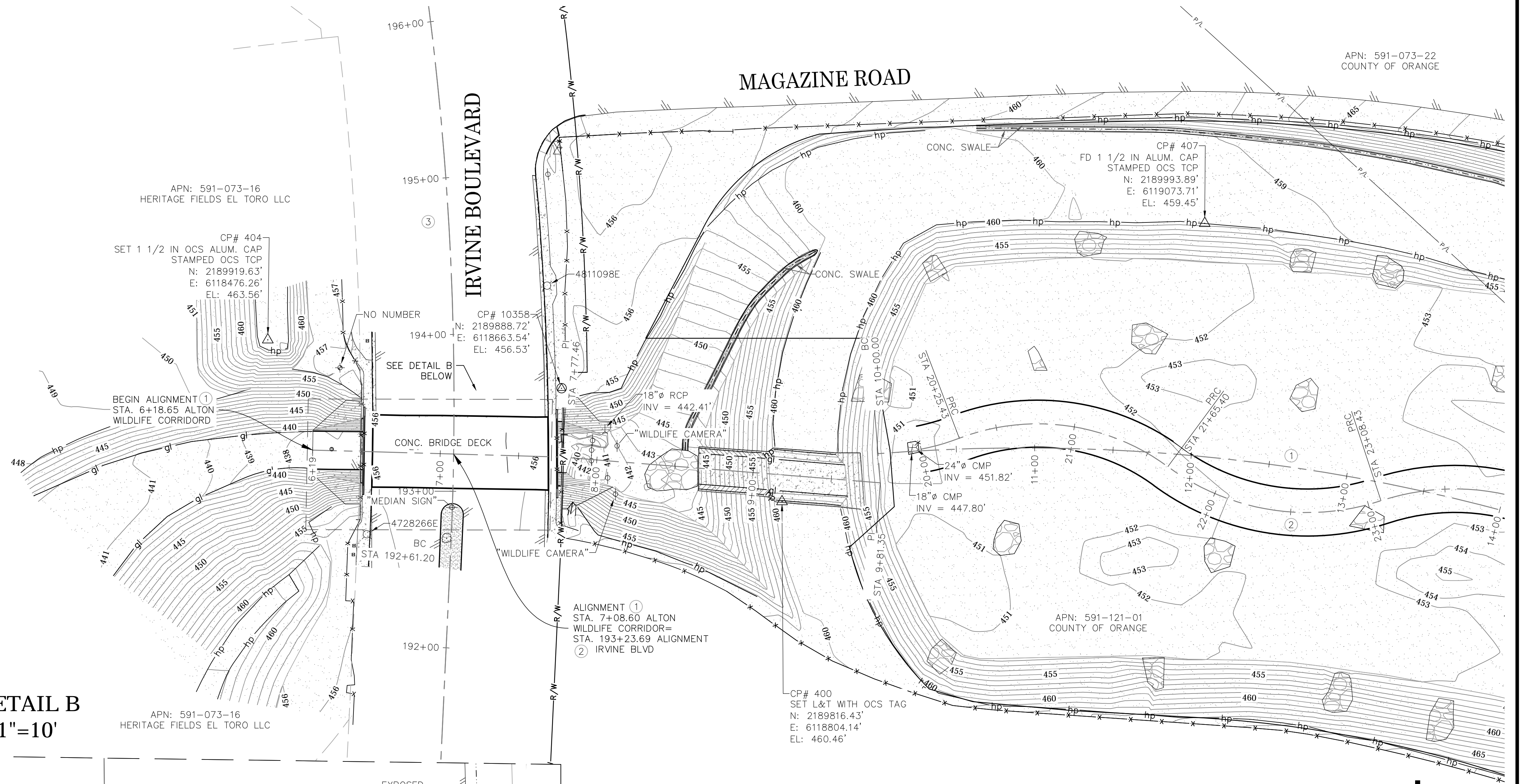
Invert

PP

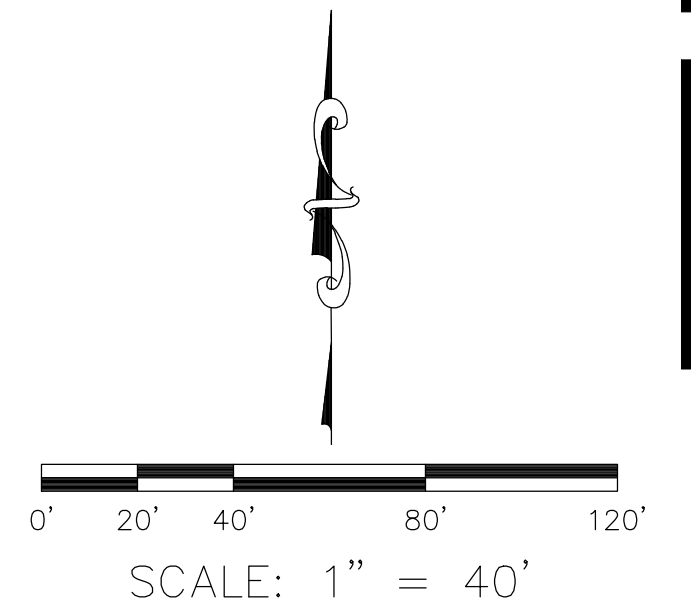
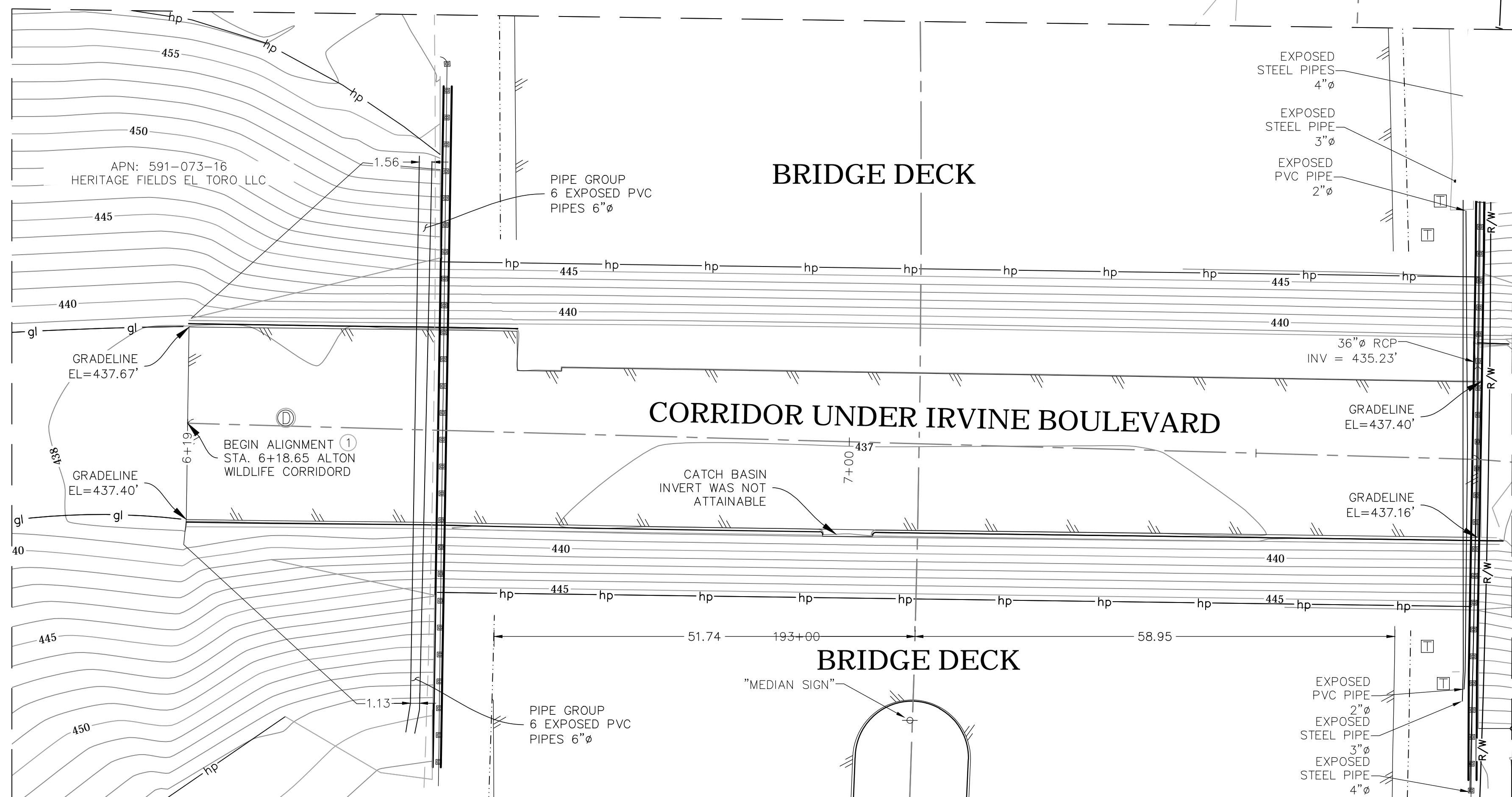
Power Pole

TC

Top of Curb



DETAIL B
1"=10'



SEE SHEET 4

U.S. Survey
Foot
OC Public Works
OC Survey/Field Services
Boundary Analysis & Mapping

			COUNTY OF ORANGE OC PUBLIC WORKS/ENGINEERING SERVICES OC SURVEY/FIELD SERVICES/BOUNDARY ANALYSIS & MAPPING				
			ALTON PKWY WILDLIFE CORRIDOR				
			TOPOGRAPHIC MAP				
			PROJECT LIMITS: FROM WEST OF IRVINE BOULEVARD TO ALTON PARKWAY				
			DATE OF SURVEY: 08/07/2020	BY: T. LOFGREEN	SHEET NO. 8 of 10		
			MAPPING	BY: R. BELTRAN			
			OFFICE CHECK	BY: M. LAFONTAINE, PLS			
			FIELD CHECK	BY: T. LOFGREEN & PARTY			
			MARK	DATE	ITEM	FIELD CHECK	SCALE: 1" = 40' W.O. #EF21342 FILE #1920PW-IN0027
			REVISIONS				FILE: ALTON PKWY WILDLIFE CORRIDOR_TOPO_2020.DWG

SEE SHEET 2

MAGAZINE ROAD

MAINTENANCE ROAD

MAGAZINE ROAD

MAINTENANCE ROAD

WILDLIFE CORRIDOR

WILDLIFE CORRIDOR

SEE SHEET 5

MAGAZINE ROAD

LEGEND

SYMBOL

- Benchmark
- Control Box Irrigation
- Control Point
- Gate, Double
- Gate, Single
- Guy Wire Anchor
- Light Pole, Single
- Manhole Storm Drain
- Monitoring Well
- Pipe Inlet/Outlet
- Post
- Sign Post
- Tree
- Utility Pole, Underground
- Valve Water

AREA PATTERN KEY

- Concrete
- Dirt
- Gravel / Rip Rap

ABBREVIATION

- AC Asphalt Concrete
- BC Beginning of Curve
- BM Benchmark
- CL Centerline
- CONC Concrete
- CP Control Point
- EL Elevation
- EC End of Curve
- FL Flowline
- FD Found
- INV Invert
- PP Power Pole
- TC Top of Curb

LINE PATTERN KEY

- Centerline
- Concrete Wall
- Edge of Concrete
- Edge of Asphalt Pavement
- Exposed Pipe
- Fence Chainlink
- Fence Post and Wire
- Flowline
- Grade Line
- Guard Rail
- Pipe underground
- Hinge Point
- Property Line
- Right of Way
- Striping

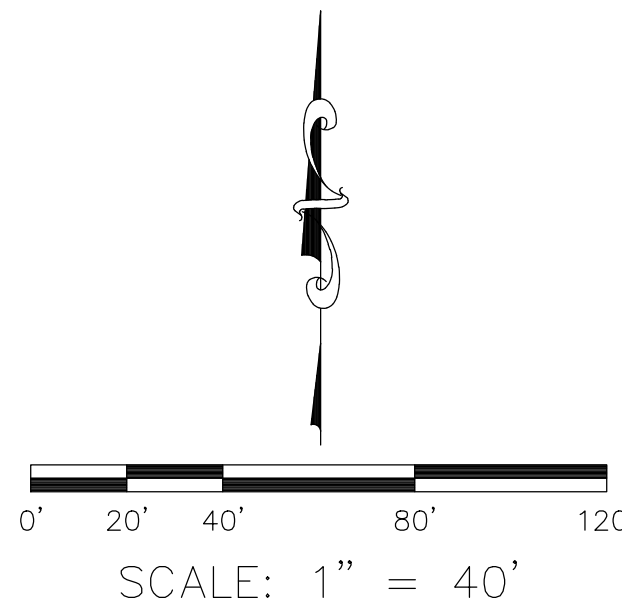
APN: 591-073-22
COUNTY OF ORANGE

APN: 591-073-21
UNITED STATES OF AMERICA

APN: 591-073-23
UNITED STATES OF AMERICA

U.S. Survey
Foot

OC Public Works
OC Survey/Field Services
Boundary Analysis & Mapping



COUNTY OF ORANGE
OC PUBLIC WORKS/ENGINEERING SERVICES
OC SURVEY/FIELD SERVICES/BOUNDARY ANALYSIS & MAPPING

ALTON PKWY WILDLIFE CORRIDOR

TOPOGRAPHIC MAP

PROJECT LIMITS: FROM WEST OF IRVINE BOULEVARD

TO ALTON PARKWAY

DATE OF SURVEY: 08/07/2020

MAPPING

OFFICE CHECK

FIELD CHECK

SCALE: 1" = 40'

BY: T. LOFGREEN

BY: R. BELTRAN

BY: M. LAFONTAINE, PLS

BY: T. LOFGREEN & PARTY

W.O. #EF21342

FILE #1920PW-IND027

FILE: ALTON PKWY WILDLIFE CORRIDOR_TOPO_2020.DWG

SHEET NO.

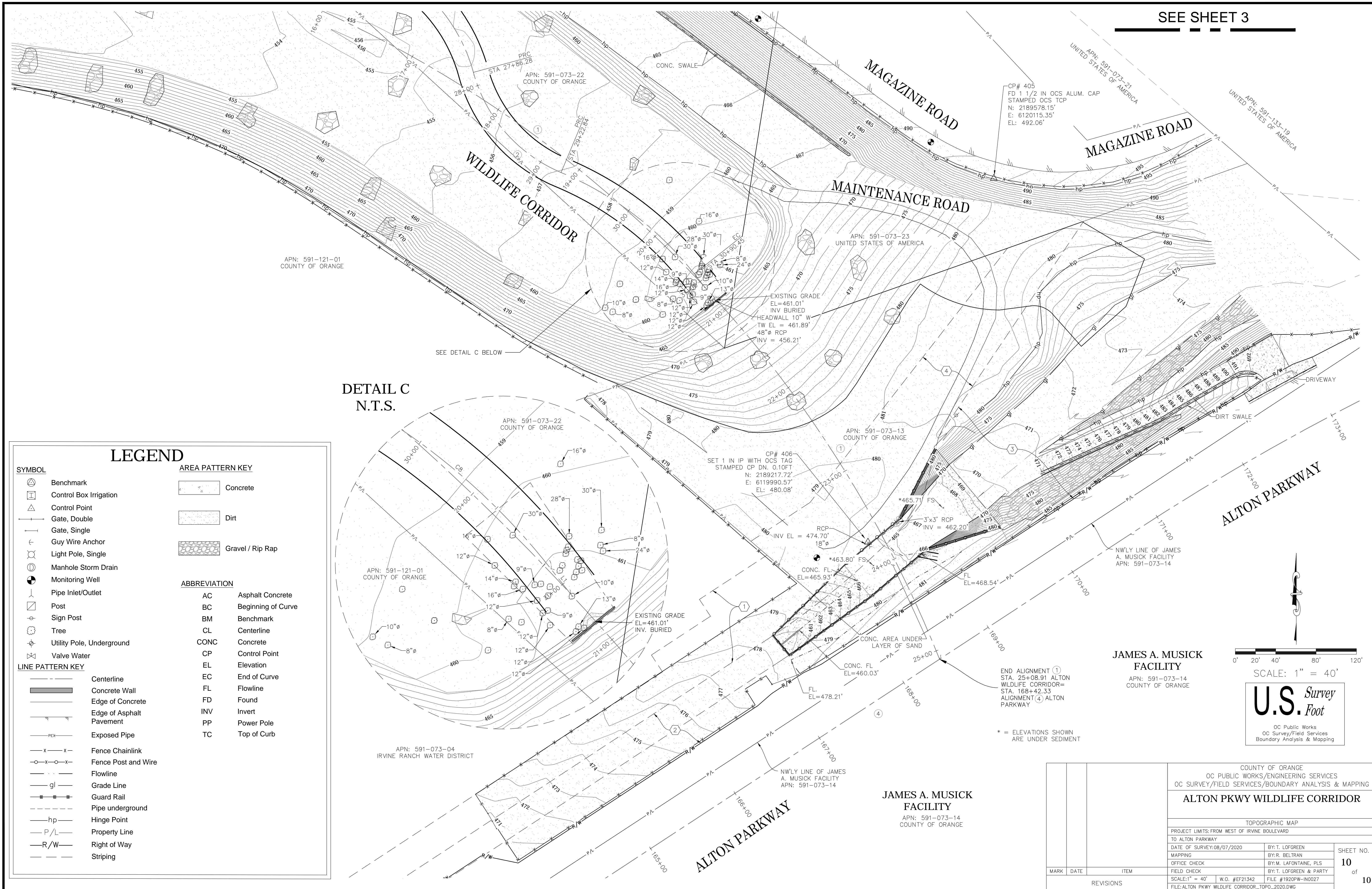
9

of

10

REVISIONS

SEE SHEET 3



LEGEND

SYMBOL

- Benchmark
- Control Box Irrigation
- Control Point
- Gate, Double
- Gate, Single
- Guy Wire Anchor
- Light Pole, Single
- Manhole Storm Drain
- Monitoring Well
- Pipe Inlet/Outlet
- Post
- Sign Post
- Tree
- Utility Pole, Underground
- Valve Water

LINE PATTERN KEY

- Centerline
- Concrete Wall
- Edge of Concrete
- Edge of Asphalt Pavement
- Exposed Pipe
- Fence Chainlink
- Fence Post and Wire
- Flowline
- Grade Line
- Guard Rail
- Pipe underground
- Hinge Point
- Property Line
- Right of Way
- Stripping

AREA PATTERN KEY

- Concrete
- Dirt
- Gravel / Rip Rap

ABBREVIATION

- AC Asphalt Concrete
- BC Beginning of Curve
- BM Benchmark
- CL Centerline
- CONC Concrete
- CP Control Point
- EL Elevation
- EC End of Curve
- FL Flowline
- FD Found
- INV Invert
- PP Power Pole
- TC Top of Curb

JAMES A. MUSICK FACILITY

APN: 591-073-14
COUNTY OF ORANGE

0' 20' 40' 80' 120'

SCALE: 1" = 40'

U.S. Survey
Foot

OC Public Works
OC Survey/Field Services
Boundary Analysis & Mapping

JAMES A. MUSICK FACILITY

APN: 591-073-14
COUNTY OF ORANGE

COUNTY OF ORANGE
OC PUBLIC WORKS/ENGINEERING SERVICES
OC SURVEY/FIELD SERVICES/BOUNDARY ANALYSIS & MAPPING

ALTON PKWY WILDLIFE CORRIDOR

TOPOGRAPHIC MAP

PROJECT LIMITS: FROM WEST OF IRVINE BOULEVARD

TO ALTON PARKWAY

DATE OF SURVEY: 08/07/2020

BY: T. LOFGREEN

BY: R. BELTRAN

OFFICE CHECK

BY: M. LAFONTANE, PLS

FIELD CHECK

BY: T. LOFGREEN & PARTY

SCALE: 1" = 40'

W.O. #EF21342

FILE #1920PW-IND027

FILE: ALTON PKWY WILDLIFE CORRIDOR_TOPO_2020.DWG

SHEET NO.

10

of

10

REVISIONS