

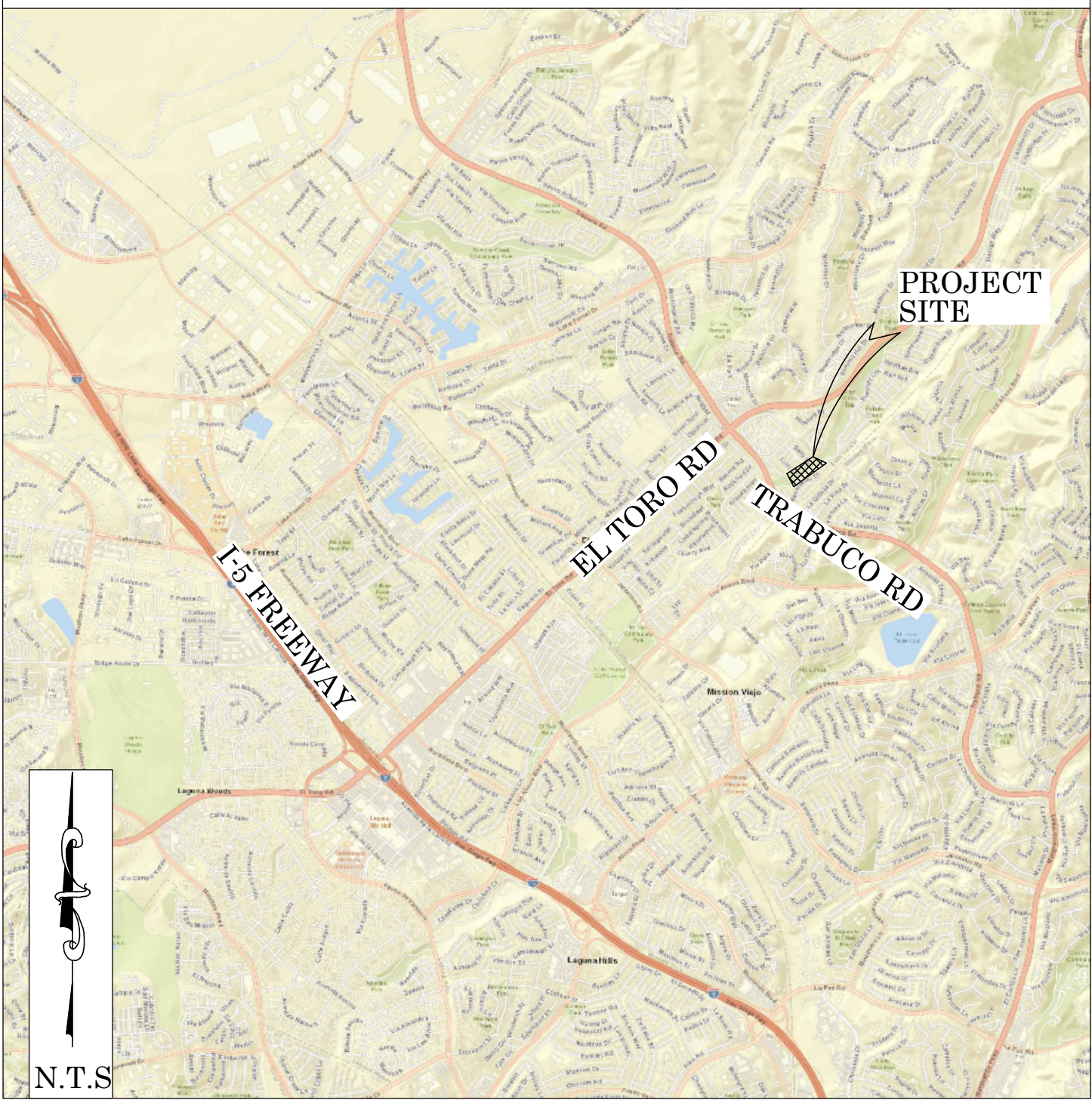


OC PUBLIC WORKS DEPARTMENT
SHANE SILSBY, DIRECTOR
KEVIN HILLS, COUNTY SURVEYOR
ALISO CREEK UPSTREAM TRABUCO

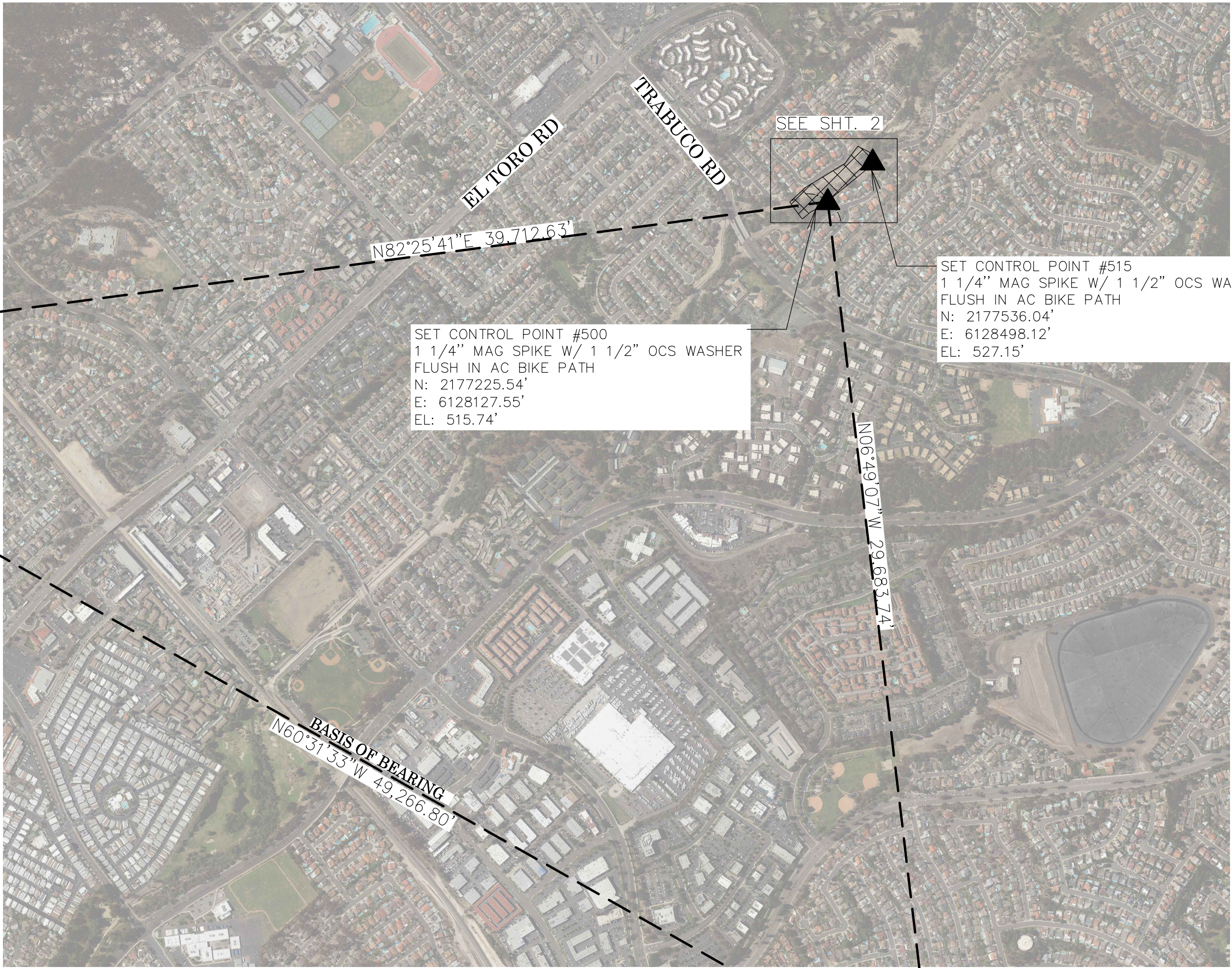


CHANNEL IMPROVEMENT PROJECT

LOCATION MAP



FOUND CGPS "TRAK"
N: 2171992.61'
E: 6088761.20'
THIS IS A CONTINUOUS GPS
STATION (CGPS) AND IS PART OF
THE CALIFORNIA SPATIAL
PREFERENCE NETWORK (CSRN),
FROM WHICH DATA CAN BE
DOWNLOADED HERE:
[HTTP://SOPACCSRC.UCSD.EDU/](http://SOPACCSRC.UCSD.EDU/).



FOUND CGPS "SBCC"
N: 2147751.75'
E: 6131651.74'
THIS IS A CONTINUOUS GPS
STATION (CGPS) AND IS PART OF
THE CALIFORNIA SPATIAL
PREFERENCE NETWORK (CSRN),
FROM WHICH DATA CAN BE
DOWNLOADED HERE:
[HTTP://SOPACCSRC.UCSD.EDU/](http://SOPACCSRC.UCSD.EDU/).

BASIS OF BEARINGS

THE BASIS OF BEARINGS FOR THIS SURVEY IS BASED ON THE CALIFORNIA COORDINATE SYSTEM (CCS83), ZONE VI, NAD 83, OCS (2017.50) EPOCH ADJUSTMENT, AS DETERMINED LOCALLY BY A LINE BETWEEN CONTINUOUS GLOBAL POSITIONING STATIONS CGPS (SBCC) AND (TRAK) BEING NORTH 60°31'33" WEST AS DERIVED FROM THE COORDINATES PUBLISHED BY THE CALIFORNIA SPATIAL REFERENCE CENTER (CSRC) ALONG WITH DATA SHEETS ON FILE IN THE OFFICE OF THE ORANGE COUNTY SURVEYOR.

HORIZONTAL DATUM

COORDINATES SHOWN ARE BASED ON THE CALIFORNIA COORDINATE SYSTEM (CCS83), ZONE VI, NAD 83, OCS 2017.50 EPOCH ADJUSTMENT.
ALL DISTANCES SHOWN ARE GRID, UNLESS OTHERWISE NOTED. TO OBTAIN GROUND DISTANCES MULTIPLY GRID BY 1.00005170
ALL DISTANCES ARE BASED ON THE U.S. SURVEY FOOT.
THE COMBINATION FACTOR SHOWN HEREON WAS DERIVED FROM POINT #500.

VERTICAL DATUM

O.C.S. BM. 3E-84-71 ELEV. = 510.700' YEAR LEVELED: 1990
NAVD88 (O.C.S. 1995 ADJUSTMENT)
DESCRIPTION: FOUND 3 3/4" OCS ALUMINUM BENCHMARK DISK STAMPED "3E-84-71", SET IN THE SOUTHEASTERLY CORNER OF A 3 FT. BY 22 FT. CONCRETE CATCH BASIN. MONUMENT IS LOCATED ALONG THE NORTHEASTERLY SIDE OF TRABUCO ROAD, 0.5 MILES SOUTHEASTERLY OF THE CENTERLINE OF EL TORO ROAD AND 42 FT. NORTHEASTERLY OF THE CENTER MEDIAN ALONG TRABUCO. MONUMENT IS SET LEVEL WITH THE SIDEWALK.

NOTES

PARCELS SHOWN HEREON WITHOUT BEARING AND DISTANCES ARE FOR GRAPHICAL PURPOSES.

SHEET INDEX

| SHEET | NO. | DESCRIPTION |
|-------|-----|-----------------|
| SHEET | 1 | TITLE SHEET |
| SHEET | 2 | TOPOGRAPHIC MAP |

PURPOSE OF SURVEY

THE PURPOSE OF THE SURVEY IS TO PROVIDE A TOPOGRAPHIC MAP FOR ALISO CREEK CHANNEL IMPROVEMENTS LOCATED 400 FEET NORTH OF TRABUCO ROAD.

SENIOR LAND SURVEYOR'S CERTIFICATE:

THIS MAP CORRECTLY REPRESENTS A SURVEY MADE BY ME OR UNDER MY DIRECTION IN CONFORMANCE WITH REQUIREMENTS OF THE PROFESSIONAL LAND SURVEYOR'S ACT; THIS 20 DAY OF DECEMBER, 2019.

JESOM MORENO, PLS. SENIOR LAND SURVEYOR



DEPUTY COUNTY SURVEYOR'S STATEMENT:

THIS MAP HAS BEEN EXAMINED IN ACCORDANCE WITH THE PROFESSIONAL LAND SURVEYOR'S ACT; THIS 20 DAY OF DECEMBER, 2019.

WADE WEAVER, PLS. DEPUTY COUNTY SURVEYOR



U.S. Survey
Foot

OC Public Works
OC Survey/Field Services
Boundary Analysis & Mapping

TOPOGRAPHIC MAPPING PROJECT

| | | | | |
|-----------|------|------|----------------------------------------------------------------------------------------------------------------|----------------------|
| | | | COUNTY OF ORANGE OC PUBLIC WORKS OC SURVEY/FIELD SERVICES/BOUNDARY ANALYSIS & MAPPING | |
| | | | ALISO CREEK - TRABUCO CHANNEL IMPROVEMENT PROJECT | |
| | | | TITLE SHEET | |
| | | | PROJECT LIMITS: 400 FT UPSTREAM OF TRABUCO TO 1200 FT UPSTREAM OF TRABUCO, WITHIN THE ALISO CREEK RIGHT OF WAY | |
| | | | DATE OF SURVEY: DECEMBER, 2019 | BY: J. JOHNS & PARTY |
| | | | TOPOGRAPHIC MAPPING | BY: A. VU |
| | | | OFFICE CHECK | BY: J. MORENO, PLS. |
| | | | FIELD CHECK | BY: J. JOHNS & PARTY |
| | | | SCALE: AS NOTED | W.O. #EF21287 |
| | | | FILE NO. 1920PW-OP0009 | |
| | | | FILE: ALISO CREEK UPSTREAM TRABUCO_TOPO_2019.DWG | |
| MARK | DATE | ITEM | | |
| REVISIONS | | | | |
| | | | SHEET NO. 1 of 2 | |

SYMBOL PATTERN KEY

Pipe Outlet

Sign

Tree

Drop Inlet

Single Gate Arm

AREA PATTERN KEY

Concrete

Dirt

Grouted Rock / Rip Rap

LEGEND

LINE PATTERN KEY

Edge of Asphalt Pavement

Flowline

Chain Link Fence

AC Hinge Point

Exposed Pipe

Concrete Retaining Wall

Concrete Block Wall



U.S. Survey
Foot
OC Public Works
OC Survey/Field Services
Boundary Analysis & Mapping

| | | | | |
|----------------------------------------------------------------------------------------------------------------|------|------|------------------------------------------------------|--|
| COUNTY OF ORANGE OC PUBLIC WORKS OC SURVEY/FIELD SERVICES/BOUNDARY ANALYSIS & MAPPING | | | ALISO CREEK - TRABUCO CHANNEL IMPROVEMENT PROJECT | |
| TOPOGRAPHIC MAP | | | SHEET NO. | |
| PROJECT LIMITS: 400 FT UPSTREAM OF TRABUCO TO 1200 FT UPSTREAM OF TRABUCO, WITHIN THE ALISO CREEK RIGHT OF WAY | | | 2 | |
| DATE OF SURVEY: DECEMBER, 2019 | | | BY: J. JOHNS & PARTY | |
| TOPOGRAPHIC MAPPING | | | BY: A. YU | |
| OFFICE CHECK | | | BY: J. MORENO, PLS. | |
| FIELD CHECK | | | BY: J. JOHNS & PARTY | |
| SCALE: AS NOTED | | | FILE NO. 1920PW-OP0009 | |
| FILE: ALISO CREEK_UPSTREAM TRABUCO_TOPO_2019.DWG | | | 2 | |
| MARK | DATE | ITEM | REVISIONS | |