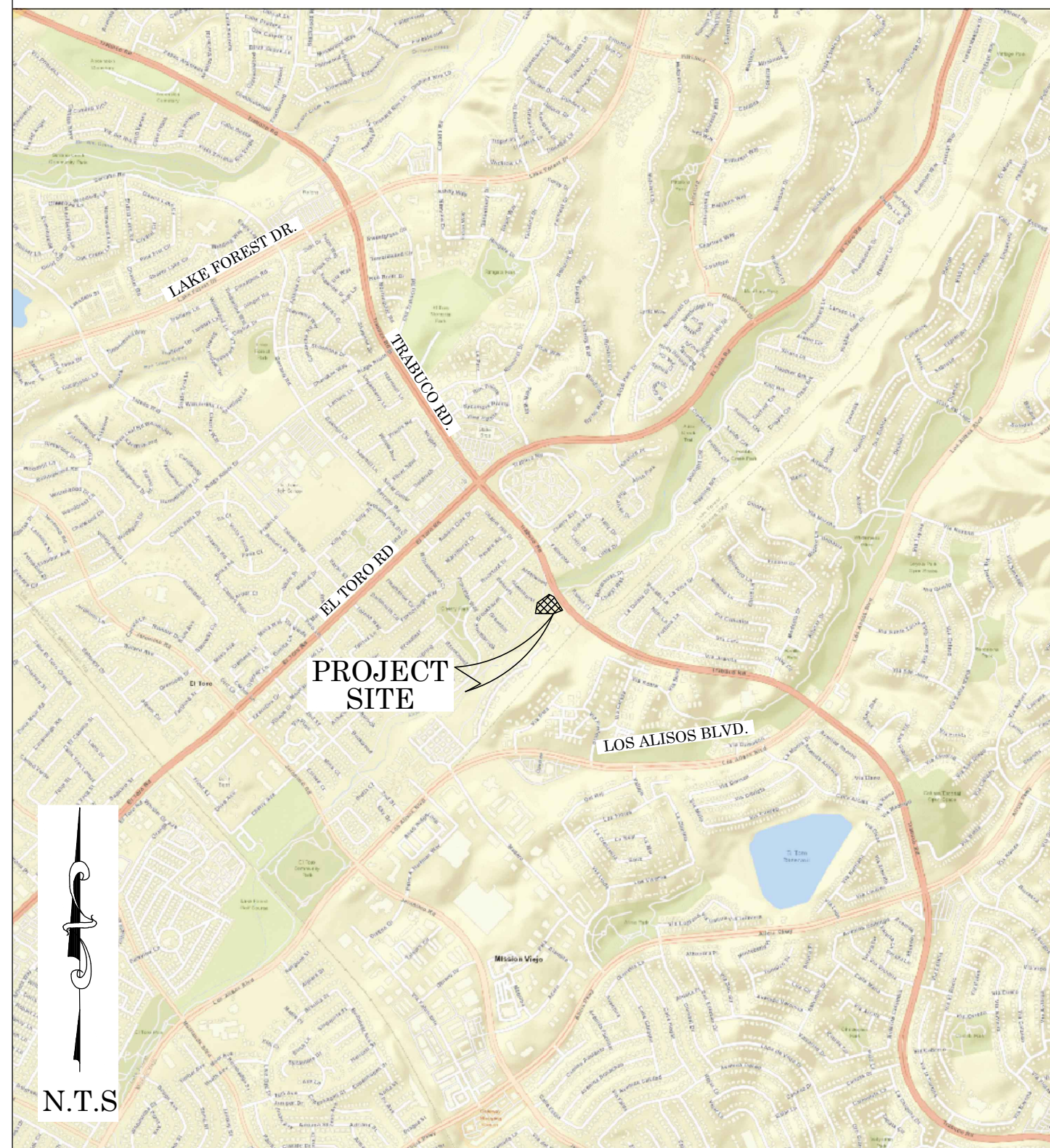




OC PUBLIC WORKS DEPARTMENT
KHALID BAZMI, PE, INTERIM DIRECTOR
KEVIN HILLS, COUNTY SURVEYOR
ALISO CREEK DOWN STREAM TRABUCO



LOCATION MAP



N.T.S

SENIOR LAND SURVEYOR'S CERTIFICATE:

THIS MAP CORRECTLY REPRESENTS A SURVEY MADE BY ME OR UNDER MY DIRECTION IN CONFORMANCE WITH REQUIREMENTS OF THE PROFESSIONAL LAND SURVEYOR'S ACT; THIS DAY OF 20 APRIL, 2020.

ELLIOTT MEDINA, PLS. SENIOR LAND SURVEYOR



DEPUTY COUNTY SURVEYOR'S STATEMENT:

THIS MAP HAS BEEN EXAMINED IN ACCORDANCE WITH THE PROFESSIONAL LAND SURVEYOR'S ACT; THIS DAY OF 20 APRIL, 2020.

WADE WEAVER, PLS. DEPUTY COUNTY SURVEYOR



U.S. Survey
Foot

OC Public Works
OC Survey/Field Services
Boundary Analysis & Mapping



BASIS OF BEARINGS

THE BASIS OF BEARINGS FOR THIS SURVEY IS BASED ON THE CALIFORNIA COORDINATE SYSTEM (CCS83), ZONE VI, NAD 83, OCS (2017.50) EPOCH ADJUSTMENT, AS DETERMINED LOCALLY BY A LINE BETWEEN CONTINUOUS GLOBAL POSITIONING STATIONS CGPS (WHYT) AND (SBCC) BEING NORTH 07°50'54\"/>

HORIZONTAL DATUM

THE COORDINATES SHOWN ARE BASED ON THE CALIFORNIA COORDINATE SYSTEM (CCS83), ZONE VI, NAD 83, OCS (2017.50) EPOCH ADJUSTMENT. ALL DISTANCES SHOWN ARE GRID, UNLESS OTHERWISE NOTED. TO OBTAIN GROUND DISTANCE MULTIPLY A GRID DISTANCE BY 1.00005148. COMBINATION FACTOR WAS HELD AT POINT NUMBER 3711 N: 2176880.77', E: 6127461.66', ELLIPSOID HEIGHT IS 401.03'. ALL DISTANCES ARE BASED ON THE U.S. SURVEY FOOT.

NOTES

THE SURVEY INFORMATION SHOWN HEREON IS TO BE USED FOR TOPOGRAPHIC RELATIONSHIPS ONLY AND IS NOT INTENDED FOR LAND ACQUISITION OR BOUNDARY PURPOSES. PARCELS SHOWN WITHOUT BEARING AND DISTANCES ARE FOR GRAPHICAL PURPOSES.

SHEET INDEX

SHEET NO.	DESCRIPTION
1	TITLE SHEET
2	BOUNDARY
3-4	TOPOGRAPHIC MAP

PURPOSE OF SURVEY

THE PURPOSE OF THE SURVEY IS TO RE-ESTABLISH THE COUNTY PROPERTY LINE O.R. 12537/766.

TOPOGRAPHIC MAPPING PROJECT

			COUNTY OF ORANGE OC PUBLIC WORKS OC SURVEY/FIELD SERVICES/BOUNDARY ANALYSIS & MAPPING			
			ALISO CREEK DOWN STREAM TRABUCO BOUNDARY SURVEY			
			TITLE SHEET			
			PROJECT LIMITS:FROM TRABUCO RD TO END PROPERTY LINE OF O.R. 12537/766			
			DATE OF SURVEY: 12/24/2020		BY: R. MACIAS & PARTY	
			BOUNDARY MAPPING		BY: H. AFTM	
			OFFICE CHECK		BY: E. MEDINA, PLS	
			FIELD CHECK		BY: R. MACIAS, PLS	
			SCALE: N.T.S.		W.O. # EQ21287	
			FILE:ALISO CREEK DOWN STREAM TOPO 2020.DWG		FILE NO. 1920PW-OP0009	
MARK	DATE	ITEM	REVISIONS		SHEET NO. 1 of 4	

ESTABLISHMENT NOTES

- A

B

C

D

E

F

G

H

I

J

K

L

M

N

O

P

Q

R

S

T

U

V

ESTABLISHED THE CENTERLINE OF TRABUCO RD. BY HOLDING RECORD CURVE DATA BETWEEN MONUMENTS **[1]** AND **[2]** PER (R1).

S.F.N. ESTABLISHED BY HOLDING A RECORD DISTANCE OF 100.00' TANGENT FROM THE SE'LY TERMINUS OF ESTABLISHMENT NOTE **A** PER (R4), ACCEPTED AS A BC POINT ON THE CENTERLINE OF TRABUCO RD PER (R1).

ESTABLISHED THE CENTERLINE OF TRABUCO RD. BY HOLDING MONUMENT **[2]** AND ESTABLISHMENT NOTE **B** PER (R4).

ESTABLISHED THE SOUTHEASTERLY LINE OF LOT 1 AND RANCHO TRABUCO LINE BY HOLDING ESTABLISHMENT NOTE **B** AND MONUMENT **[6]** PER (R7).

ESTABLISHED THE SOUTHWESTERLY LINE OF LOT 1 BY HOLDING MONUMENT **[7]** AND ESTABLISHMENT NOTE **V** PER (R4).

S.N.F. ESTABLISHED THE WESTERLY CORNER OF LOT 1 AT THE CALCULATED RECORD DISTANCE 25.92' SE'LY FROM MONUMENT **[7]** ALONG ESTABLISHMENT NOTE **E** PER (R4).

ESTABLISHED THE SOUTHEASTERLY BOUNDARY LINE OF TRACT NO.10261, AND THE EASTERLY BOUNDARY LINE OF TRACT NO.10282, AND THE SOUTHEASTERLY LINE OF ORANGE COUNTY FLOOD CONTROL DISTRICT PROPERTY BY HOLDING MONUMENT **[1]** AND **[10]** PER (R8 AND R9).

ESTABLISHED BY HOLDING RECORD CHORD DISTANCE SE'LY 77.99' FROM ESTABLISHMENT NOTE **K** PER (R4). BEING A POINT ON THE SW'LY RIGHT OF WAY OF TRABUCO ROAD PER ESTABLISHMENT NOTE **M**.

ESTABLISHED THE SOUTHEASTERLY BOUNDARY LINE OF TRACT NO.9808 BY NE'LY PROLONGATION OF ESTABLISHMENT NOTE **G** PER (R2).

S.F.N. ESTABLISHED BY INTERSECTION WITH ESTABLISHMENT NOTES **E** AND **G** PER (R4).

ESTABLISHED BY HOLDING RECORD DISTANCE 50.79' SW'LY FROM MONUMENT **[1]** ALONG ESTABLISHMENT NOTE **G** PER (R4).

ESTABLISHED THE NORTHWESTERLY LINE OF LOT 1 BY LEAST SQUARES ADJUSTMENT BETWEEN ESTABLISHMENT NOTES **F** AND **H**.

ESTABLISHED THE SW'LY RIGHT OF WAY OF TRABUCO ROAD RADIAL TO AND 50' SW'LY, PERPENDICULAR FROM ESTABLISHMENT **A** PER (R4).

ESTABLISHED THE SW'LY RIGHT OF WAY OF TRABUCO ROAD RADIAL TO AND 60' SW'LY, PERPENDICULAR FROM ESTABLISHMENT **A** PER (R4).

ESTABLISHED THE SW'LY RIGHT OF WAY OF TRABUCO ROAD PARALLEL AND 50' PERPENDICULAR FROM ESTABLISHMENT **G** PER (R4).

ESTABLISHED THE SW'LY RIGHT OF WAY OF TRABUCO ROAD PARALLEL AND 60' PERPENDICULAR FROM ESTABLISHMENT **C** PER (R4).

ESTABLISHED THE SW'LY LINE OF SLOPE EASEMENT PARALLEL AND 75' PERPENDICULAR FROM ESTABLISHMENT **C** PER (R4).

ESTABLISHED BY HOLDING RECORD CHORD DISTANCE NW'LY 263.04' FOR A TANGENT CURVE FROM ESTABLISHMENT NOTE **Q** PER (R4).

ESTABLISHED RADIAL TO AND 75' SW'LY, PERPENDICULAR FROM ESTABLISHMENT **A** BETWEEN ESTABLISHMENT **R** AND THE WESTERLY TERMINUS OF NOTE **Q** PER (R4).

ESTABLISHED BY INTERSECTION BETWEEN ESTABLISHMENTS NOTE **L** AND THE PROLONGATION OF A LINE TANGENT FROM ESTABLISHMENT NOTE **S** PER (R4).

ESTABLISHED THE SW'LY LINE OF SLOPE EASEMENT BY HOLDING ESTABLISHMENT NOTES **T** AND **R** PER (R4).

ESTABLISHED THE SOUTHERLY CORNER OF LOT 1 BY INTERSECTION BETWEEN ESTABLISHMENT NOTE **D** AND THE SE'LY PROLONGATION OF A LINE BETWEEN MONUMENTS **[3]** AND **[7]** PER (R4).
- MONUMENT NOTES
- 1

2

3

4

5

6

7

8

9

10

11

12

FOUND 2" IRON PIPE AND NAIL WITH 3/4 " TAG STAMPED 'RCE14814', DOWN 0.5' IN DIRT, ACCEPTED AS A BC POINT ON THE CENTERLINE OF TRABUCO RD. PER (R3).

FOUND GEAR SPIKE AND 1 1/2" WASHER STAMPED 'RCE14814', DOWN 0.25' IN A/C, ACCEPTED AS A EC POINT ON THE CENTERLINE OF TRABUCO RD. PER (R3).

FOUND 2" IRON PIPE AND NAIL WITH 3/4 " TAG STAMPED 'LS 3069', DOWN 1.3' IN DIRT. ACCEPTED AS A POINT ON THE SOUTHWESTERLY LINE OF LOT 1 PER (R4).

FOUND 2" PUNCHED BRASS DISK, STAMPED "R.8.W C.C 23 26 T.6.S. RE4231 RE2889", UP 0.7' IN DIRT. S45°50'40"E 1.69' MEASURED PERPENDICULAR FROM ESTABLISHMENT NOTE **D**, PER (R7).

FOUND WELL MONUMENT WITH 2" PUNCHED BRASS DISK , ILLEGIBLE, DOWN 1.5' IN AC, S45°50'40"E 0.98' MEASURED PERPENDICULAR FROM ESTABLISHMENT NOTE **D**, PER (R10).

FOUND 2" IRON PIPE WITH 2 1/2 " PUNCHED BRASS DISK, STAMPED "TRABUCO NO3 RESET 6-5-79", DOWN 1.5' IN DIRT. ACCEPTED AS A POINT ON RANCHO TRABUCO LINE, PER (R12).

FOUND 2" IRON PIPE AND NAIL WITH 3/4 " TAG STAMPED 'LS 3069', DOWN 1.3' IN DIRT. ACCEPTED AS A POINT ON THE SOUTHWESTERLY LINE OF LOT 1 PER (R4).

FOUND 2" IRON PIPE AND NAIL WITH 3/4 " TAG STAMPED 'LS 2921', DOWN 0.8' IN DIRT. ACCEPTED AS A POINT ON THE SE'LY PROD OF THAT PORTION OF THE SE'LY LINE OF TR. 10261 PER (R8), DESCRIBED AS N43-50-45W, 52.00'. S43-13-21E 0.14' FROM EST LINE **G** PER SAID (R8).

FOUND 2" IRON PIPE NO TAG, DOWN 0.9' IN DIRT. ACCEPTED AS A POINT ON THE SOUTH EASTERLY TRACT BOUNDARY LINE OF TRACT NO.10261 PER (R8).

FOUND 2" IRON PIPE WITH 3/4 " TAG STAMPED 'LS 2961', DOWN 0.8' IN DIRT. ACCEPTED AS A POINT ON THE EASTERLY BOUNDARY LINE OF TRACT NO.10262 PER (R9).

FOUND 2" IRON PIPE AND NAIL WITH 3/4 " TAG, STAMPING IS ILLEGIBLE, DOWN 0.25' IN DIRT. N43°13'21"W 0.10' MEASURED PERPENDICULAR FROM ESTABLISHMENT NOTE **D** PER (R2).

FOUND WELL MONUMENT MISSING THE BRASS DISK, DOWN 1.60'. MONUMENT WAS DESTROYED NOT ACCEPTED AS THE CENTERLINE OF TRABUCO RD. PER (R6).

U.S. Survey

Foot

OC Public Works
OC Survey/Field Services
Boundary Analysis & Mapping

0'30'60'120'180'

SCALE: 1" = 60'

LINE TABLE			
LINE #	BEARING	MEASURED DISTANCE	RECORD DISTANCE
L1	S44°09'20"W	10.07'	(M&R R4)
L2	S44°09'20"W	15.10'	(M&R R4)
L3	S43°14'04"E	25.92'	(M&CR R4)
L4	N43°14'04"W	80.20'	80.14'(R4)
L5	N46°46'39"E	25.38'	(M&R R4)
L6	N43°13'21"W	14.00'	(M&R R4)
L7	N43°13'21"W	14.00'	(M&R R4)
L8	N46°46'39"E	56.00'	(M&R R4)
L9	N57°22'27"E	47.55'	47.59'(R4)
L10	N57°22'27"E	23.22'	(M&R R4)
L11	N57°22'27"E	80.79'	80.83'(R4)
L12	N57°22'27"E	10.02'	(M&R R4)
L13	N52°31'54"W	94.14'	(M&R R4)
L14	N52°31'54"W	92.97'	(M&R R4)
L15	N52°31'54"W	91.28'	91.21'(R4)
L16	N47°24'56"W	263.04'	(M&R R4)
L17	N34°49'35"W	77.99'	(M&R R4)

LEGEND

●

⊗

CR

R

M

FOUND MONUMENT AS NOTED

SEARCHED, NOTHING FOUND / S.N.F.

CALC FROM RECORD MAP

RECORD MAP

MEASURED

DETAIL A
N.T.S.

DETAIL B
N.T.S.

DETAIL C
N.T.S.

DETAIL D
N.T.S.

DETAIL E
N.T.S.

LOT1
TRACT NO. 8991,
M.M. 442/24-26

ALISO CREEK

TRABUCO ROAD

MANALASTAS DRIVE

TRACT NO. 10261
M.M. 456/37-40

TRACT NO. 8991
M.M. 442/24-26

TRACT NO. 10262
M.M. 456/37-40

TRACT NO. 9808
M.M. 480/87-90

TRACT NO. 10261
M.M. 456/37-40

TRACT NO. 10262
M.M. 456/37-40

TRACT NO. 8991
M.M. 442/24-26

TRACT NO. 10261
M.M. 456/37-40

TRACT NO. 10262
M.M. 456/37-40

TRACT NO. 9808
M.M. 480/87-90

TRACT NO. 10261
M.M. 456/37-40

TRACT NO. 10262
M.M. 456/37-40

TRACT NO. 8991
M.M. 442/24-26

TRACT NO. 10261
M.M. 456/37-40

TRACT NO. 10262
M.M. 456/37-40

TRACT NO. 9808
M.M. 480/87-90

TRACT NO. 10261
M.M. 456/37-40

TRACT NO. 10262
M.M. 456/37-40

TRACT NO. 8991
M.M. 442/24-26

TRACT NO. 10261
M.M. 456/37-40

TRACT NO. 10262
M.M. 456/37-40

TRACT NO. 9808
M.M. 480/87-90

TRACT NO. 10261
M.M. 456/37-40

TRACT NO. 10262
M.M. 456/37-40

TRACT NO. 8991
M.M. 442/24-26

TRACT NO. 10261
M.M. 456/37-40

TRACT NO. 10262
M.M. 456/37-40

TRACT NO. 9808
M.M. 480/87-90

TRACT NO. 10261
M.M. 456/37-40

TRACT NO. 10262
M.M. 456/37-40

TRACT NO. 8991
M.M. 442/24-26

TRACT NO. 10261
M.M. 456/37-40

TRACT NO. 10262
M.M. 456/37-40

TRACT NO. 9808
M.M. 480/87-90

TRACT NO. 10261
M.M. 456/37-40

TRACT NO. 10262
M.M. 456/37-40

TRACT NO. 8991
M.M. 442/24-26

TRACT NO. 10261
M.M. 456/37-40

TRACT NO. 10262
M.M. 456/37-40

TRACT NO. 9808
M.M. 480/87-90

TRACT NO. 10261
M.M. 456/37-40

TRACT NO. 10262
M.M. 456/37-40

TRACT NO. 8991
M.M. 442/24-26

TRACT NO. 10261
M.M. 456/37-40

TRACT NO. 10262
M.M. 456/37-40

TRACT NO. 9808
M.M. 480/87-90

TRACT NO. 10261
M.M. 456/37-40

TRACT NO. 10262
M.M. 456/37-40

TRACT NO. 8991
M.M. 442/24-26

TRACT NO. 10261
M.M. 456/37-40

TRACT NO. 10262
M.M. 456/37-40

TRACT NO. 9808
M.M. 480/87-90

TRACT NO. 10261
M.M. 456/37-40

TRACT NO. 10262
M.M. 456/37-40

TRACT NO. 8991
M.M. 442/24-26

TRACT NO. 10261
M.M. 456/37-40

TRACT NO. 10262
M.M. 456/37-40

TRACT NO. 9808
M.M. 480/87-90

TRACT NO. 10261
M.M. 456/37-40

TRACT NO. 10262
M.M. 456/37-40

TRACT NO. 8991
M.M. 442/24-26

TRACT NO. 10261
M.M. 456/37-40

TRACT NO. 10262
M.M. 456/37-40

TRACT NO. 9808
M.M. 480/87-90

TRACT NO. 10261
M.M. 456/37-40

TRACT NO. 10262
M.M. 456/37-40

TRACT NO. 8991
M.M. 442/24-26

TRACT NO. 10261
M.M. 456/37-40

TRACT NO. 10262
M.M. 456/37-40

TRACT NO. 9808
M.M. 480/87-90

TRACT NO. 10261
M.M. 456/37-40

TRACT NO. 10262
M.M. 456/37-40

TRACT NO. 8991
M.M. 442/24-26

TRACT NO. 10261
M.M. 456/37-40

TRACT NO. 10262
M.M. 456/37-40

TRACT NO. 9808
M.M. 480/87-90

TRACT NO. 10261
M.M. 456/37-40

TRACT NO. 10262
M.M. 456/37-40

TRACT NO. 8991
M.M. 442/24-26

TRACT NO. 10261
M.M. 456/37-40

TRACT NO. 10262
M.M. 456/37-40

TRACT NO. 9808
M.M. 480/87-90

TRACT NO. 10261
M.M. 456/37-40

TRACT NO. 10262
M.M. 456/37-40

TRACT NO. 8991
M.M. 442/24-26

TRACT NO. 10261
M.M. 456/37-40

TRACT NO. 10262
M.M. 456/37-40

TRACT NO. 9808
M.M. 480/87-90

TRACT NO. 10261
M.M. 456/37-40

TRACT NO. 10262
M.M. 456/37-40

TRACT NO. 8991
M.M. 442/24-26

TRACT NO. 10261
M.M. 456/37-40

TRACT NO. 10262
M.M. 456/37-40

TRACT NO. 9808
M.M. 480/87-90

TRACT NO. 10261
M.M. 456/37-40

TRACT NO. 10262
M.M. 456/37-40

TRACT NO. 8991
M.M. 442/24-26

TRACT NO. 10261
M.M. 456/37-40

TRACT NO. 10262
M.M. 456/37-40

TRACT NO. 9808
M.M. 480/87-90

TRACT NO. 10261
M.M. 456/37-40

TRACT NO. 10262
M.M. 456/37-40

TRACT NO. 8991
M.M. 442/24-26

TRACT NO. 10261
M.M. 456/37-40

TRACT NO. 10262
M.M. 456/37-40

TRACT NO. 9808
M.M. 480/87-90

TRACT NO. 10261
M.M. 456/37-40

TRACT NO. 10262
M.M. 456/37-40

TRACT NO. 8991
M.M. 442/24-26

TRACT NO. 10261
M.M. 456/37-40

TRACT NO. 10262
M.M. 456/37-40

TRACT NO. 9808
M.M. 480/87-90

TRACT NO. 10261
M.M. 456/37-40

TRACT NO. 10262
M.M. 456/37-40

TRACT NO. 8991
M.M. 442/24-26

TRACT NO. 10261
M.M. 456/37-40

TRACT NO. 10262
M.M. 456/37-40

TRACT NO. 9808
M.M. 480/87-90

TRACT NO. 10261
M.M. 456/37-40

TRACT NO. 10262
M.M. 456/37-40

TRACT NO. 8991
M.M. 442/24-26

TRACT NO. 10261
M.M. 456/37-40

TRACT NO. 10262
M.M. 456/37-40

TRACT NO. 9808
M.M. 480/87-90

TRACT NO. 10261
M.M. 456/37-40

TRACT NO. 10262
M.M. 456/37-40

TRACT NO. 8991
M.M. 442/24-26

TRACT NO. 10261
M.M. 456/37-40

TRACT NO. 10262
M.M. 456/37-40

TRACT NO. 9808
M.M. 480/87-90

TRACT NO. 10261
M.M. 456/37-40

TRACT NO. 10262
M.M. 456/37-40

TRACT NO. 8991
M.M. 442/24-26

TRACT NO. 10261
M.M. 456/37-40

TRACT NO. 10262
M.M. 456/37-40

TRACT NO. 9808
M.M. 480/87-90

TRACT NO. 10261
M.M. 456/37-40

TRACT NO. 10262
M.M. 456/37-40

TRACT NO. 8991
M.M. 442/24-26

TRACT NO. 10261
M.M. 456/37-40

TRACT NO. 10262
M.M. 456/37-40

TRACT NO. 9808
M.M. 480/87-90

TRACT NO. 10261
M.M. 456/37-40

TRACT NO. 10262
M.M. 456/37-40

TRACT NO. 8991
M.M. 442/24-26

TRACT NO. 10261
M.M. 456/37-40

TRACT NO. 10262
M.M. 456/37-40

TRACT NO. 9808
M.M. 480/87-90

TRACT NO. 10261
M.M. 456/37-40

TRACT NO. 10262
M.M. 456/37-40

TRACT NO. 8991
M.M. 442/24-26

TRACT NO. 10261
M.M. 456/37-40

TRACT NO. 10262
M.M. 456/37-40

TRACT NO. 9808
M.M. 480/87-90

TRACT NO. 10261
M.M. 456/37-40

TRACT NO. 10262
M.M. 456/37-40

TRACT NO. 8991
M.M. 442/24-26

TRACT NO. 10261
M.M. 456/37-40

TRACT NO. 10262
M.M. 456/37-40

TRACT NO. 9808
M.M. 480/87-90

TRACT NO. 10261
M.M. 456/37-40

TRACT NO. 10262
M.M. 456/37-40

TRACT NO. 8991
M.M. 442/24-26

TRACT NO. 10261
M.M. 456/37-40

TRACT NO. 10262
M.M. 456/37-40

TRACT NO. 9808
M.M. 480/87-90

TRACT NO. 10261
M.M. 456/37-40

TRACT NO. 10262
M.M. 456/37-40

TRACT NO. 8991
M.M. 442/24-26

TRACT NO. 10261
M.M. 456/37-40

TRACT NO. 10262
M.M. 456/37-40

TRACT NO. 9808
M.M. 480/87-90

TRACT NO. 10261
M.M. 456/37-40

TRACT NO. 10262
M.M. 456/37-40

TRACT NO. 8991
M.M. 442/24-26

TRACT NO. 10261
M.M. 456/37-40

TRACT NO. 10262
M.M. 456/37-40

TRACT NO. 9808
M.M. 480/87-90

TRACT NO. 10261
M.M. 456/37-40

TRACT NO. 10262
M.M. 456/37-40

TRACT NO. 8991
M.M. 442/24-26

TRACT NO. 10261
M.M. 456/37-40

TRACT NO. 10262
M.M. 456/37-40

TRACT NO. 9808
M.M. 480/87-90

TRACT NO. 10261
M.M. 456/37-40

TRACT NO. 10262
M.M. 456/37-40

TRACT NO. 8991
M.M. 442/24-26

TRACT NO. 10261
M.M. 456/37-40

TRACT NO. 10262
M.M. 456/37-40

TRACT NO. 9808
M.M. 480/87-90

TRACT NO. 10261
M.M. 456/37-40

TRACT NO. 10262
M.M. 456/37-40

TRACT NO. 8991
M.M. 442/24-26

TRACT NO. 10261
M.M. 456/37-40

TRACT NO. 10262
M.M. 456/37-40

TRACT NO. 9808
M.M. 480/87-90

TRACT NO. 10261
M.M. 456/37-40

TRACT NO. 10262
M.M. 456/37-40

TRACT NO. 8991
M.M. 442/24-26

TRACT NO. 10261
M.M. 456/37-40

TRACT NO. 10262
M.M. 456/37-40

TRACT NO. 9808
M.M. 480/87-90

TRACT NO. 10261
M.M. 456/37-40

TRACT NO. 10262
M.M. 456/37-40

TRACT NO. 8991
M.M. 442/24-26

TRACT NO. 10261
M.M. 456/37-40

TRACT NO. 10262
M.M. 456/37-40

TRACT NO. 9808
M.M. 480/87-90

TRACT NO. 10261
M.M. 456/37-40

TRACT NO. 10262
M.M. 456/37-40

TRACT NO. 8991
M.M. 442/24-26

TRACT NO. 10261
M.M. 456/37-40

TRACT NO. 10262
M.M. 456/37-40

TRACT NO. 9808
M.M. 480/87-90

TRACT NO. 10261
M.M. 456/37-40

TRACT NO. 10262
M.M. 456/37-40

TRACT NO. 8991
M.M. 442/24-26

TRACT NO. 10261
M.M. 456/37-40

TRACT NO. 10262
M.M. 456/37-40

TRACT NO. 9808
M.M. 480/87-90

TRACT NO. 10261
M.M. 456/37-40

TRACT NO. 10262
M.M. 456/37-40

TRACT NO. 8991
M.M. 442/24-26

TRACT NO. 10261
M.M. 456/37-40

TRACT NO. 10262
M.M. 456/37-40

TRACT NO. 9808
M.M. 480/87-90

TRACT NO. 10261
M.M. 456/37-40

TRACT NO. 10262
M.M. 456/37-40

TRACT NO. 8991
M.M. 442/24-26

TRACT NO. 10261
M.M. 456/37-40

TRACT NO. 10262
M.M. 456/37-40

TRACT NO. 9808
M.M. 480/87-90

TRACT NO. 10261
M.M. 456/37-40

TRACT NO. 10262
M.M. 456/37-40

TRACT NO. 8991
M.M. 442/24-26

TRACT NO. 10261
M.M. 456/37-40

TRACT NO. 10262
M.M. 456/37-40

TRACT NO. 9808
M.M. 480/87-90

TRACT NO. 10261
M.M. 456/37-40

TRACT NO. 10262
M.M. 456/37-40

TRACT NO. 8991
M.M. 442/24-26

TRACT NO. 10261
M.M. 456/37-40

TRACT NO. 10262
M.M. 456/37-40

TRACT NO. 9808
M.M. 480/87-90

TRACT NO. 10261
M.M. 456/37-40

TRACT NO. 10262
M.M. 456/37-40

TRACT NO. 8991
M.M. 442/24-26

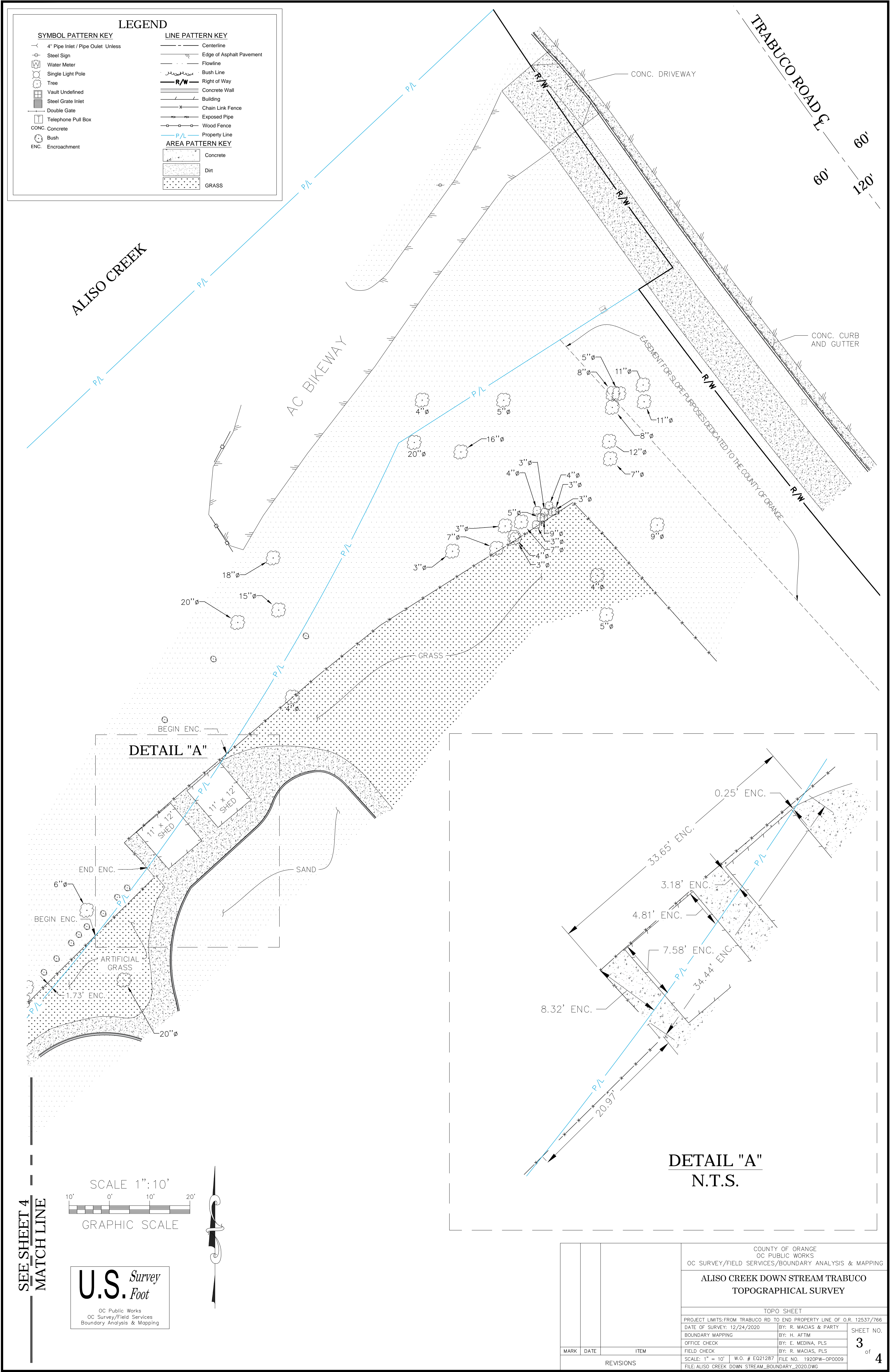
TRACT NO. 10261
M.M. 456/37-40

TRACT NO. 10262
M.M. 456/37-40

TRACT NO. 9808
M.M. 480/87-90

TRACT NO. 10261
M.M. 456/37-40

TRACT NO



SYMBOL PATTERN KEY

- 4" Pipe Inlet / Pipe Outlet Unless
- Steel Sign
- Water Meter
- Single Light Pole
- Tree
- Vault Undefined
- Steel Grate Inlet
- Double Gate
- Telephone Pull Box
- CONC. Concrete
- Bush
- ENC. Encroachment

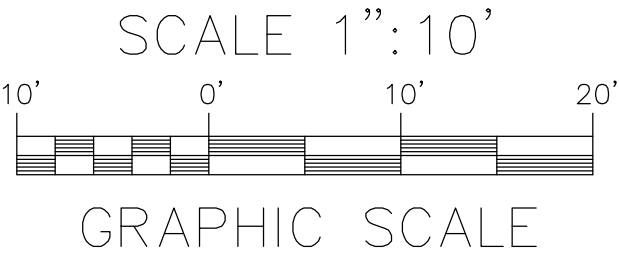
LEGEND

LINE PATTERN KEY

- Centerline
- Edge of Asphalt Pavement
- Flowline
- Bush Line
- R/W** Right of Way
- Concrete Wall
- Building
- Chain Link Fence
- Exposed Pipe
- Wood Fence
- Property Line

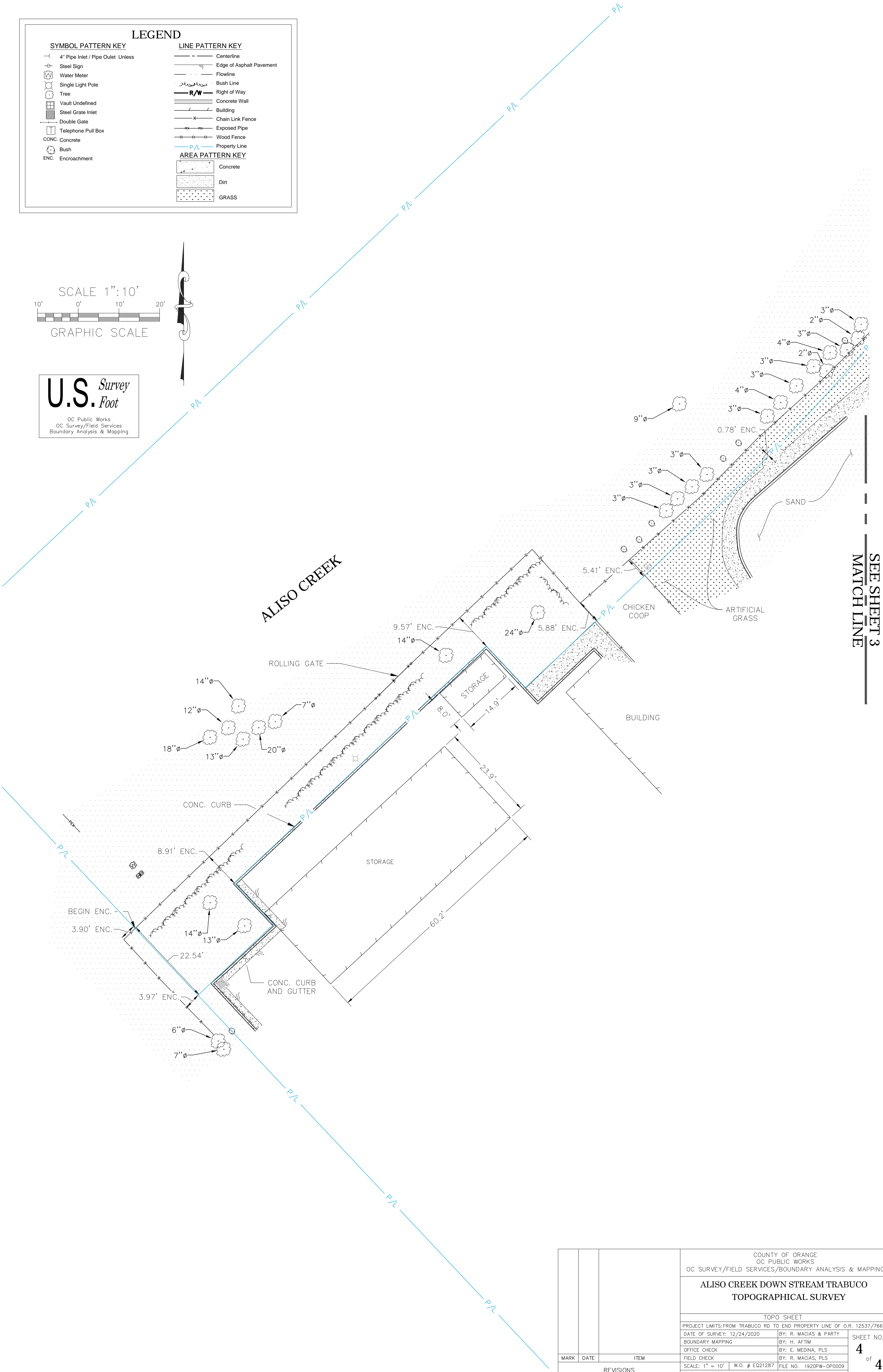
AREA PATTERN KEY

- Concrete
- Dirt
- GRASS



U.S. Survey
Foot

OC Public Works
OC Survey/Field Services
Boundary Analysis & Mapping



			COUNTY OF ORANGE OC PUBLIC WORKS OC SURVEY/FIELD SERVICES/BOUNDARY ANALYSIS & MAPPING			
			ALISO CREEK DOWN STREAM TRABUCO TOPOGRAPHICAL SURVEY			
			TOPO SHEET			
			PROJECT LIMITS:FROM TRABUCO RD TO END PROPERTY LINE OF O.R. 12537/766			
			DATE OF SURVEY: 12/24/2020		BY: R. MACIAS & PARTY	
			BOUNDARY MAPPING		BY: H. AFTIM	
			OFFICE CHECK		BY: E. MEDINA, PLS	
			FIELD CHECK		BY: R. MACIAS, PLS	
			SCALE: 1" = 10'		W.O. # EQ21287	
			FILE: ALISO CREEK DOWN STREAM_TOPO_2020.DWG		FILE NO. 1920PW-OP0009	
			REVISIONS			

MARK	DATE	ITEM	SHEET NO.	
			4	of 4