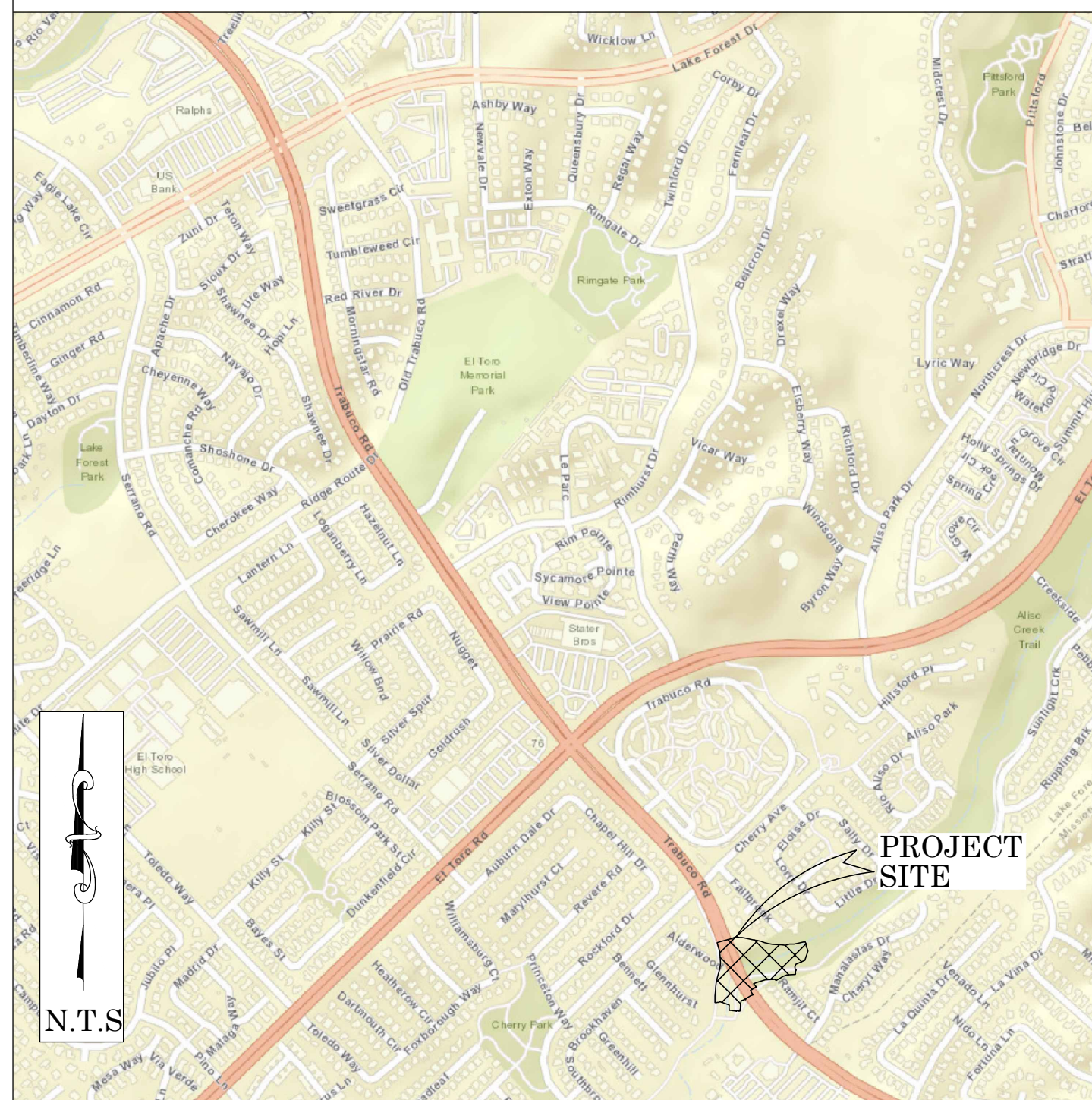




OC PUBLIC WORKS DEPARTMENT
JAMES TREADAWAY, DIRECTOR OF PUBLIC WORKS
KEVIN HILLS, COUNTY SURVEYOR
ALISO CREEK UNDER TRABUCO RD



LOCATION MAP



RESTORATION



FOUND CGPS "SBCC"
N: 2147751.75
E: 6131651.74
THIS IS A CONTINUOUS GPS STATION
(CGPS) AND IS PART OF THE
CALIFORNIA SPATIAL REFERENCE
NETWORK (CSRN), FROM WHICH DATA
CAN BE DOWNLOADED HERE:
[HTTP://SOPACCSRC.UCD.EDU/](http://SOPACCSRC.UCD.EDU/).

BASIS OF BEARINGS

THE BASIS OF BEARINGS FOR THIS SURVEY IS BASED ON THE CALIFORNIA COORDINATE SYSTEM (CCS83), ZONE VI, NAD 83, OCS (2017.50) EPOCH ADJUSTMENT, AS DETERMINED LOCALLY BY A LINE BETWEEN CONTINUOUS GLOBAL POSITIONING STATIONS CGPS STATIONS (WHYT) AND (SBCC) BEING NORTH 07°50'54" EAST AS DERIVED FROM THE COORDINATES PUBLISHED BY THE CALIFORNIA SPATIAL REFERENCE CENTER (CSRC) ALONG WITH DATA SHEETS ON FILE IN THE OFFICE OF THE ORANGE COUNTY SURVEYOR.

HORIZONTAL DATUM

COORDINATES SHOWN ARE BASED ON THE CALIFORNIA COORDINATE SYSTEM (CCS83), ZONE VI, NAD 83, OCS (2017.50) EPOCH ADJUSTMENT.
ALL DISTANCES SHOWN ARE GRID, UNLESS OTHERWISE NOTED. TO OBTAIN GROUND DISTANCES MULTIPLY GRID BY A COMBINED FACTOR OF 1.00005129.
COMBINATION FACTOR WAS HELD AT: CP#3711
N: 2176880.75' E: 6127461.68' ELEVATION= 505.34'

VERTICAL DATUM

O.C.S. BM. 3E-84-71 ELEV. = 510.700' YEAR LEVELED: 1990
NAVD 1988 (O.C.S. 1995 ADJUSTMENT)
DESCRIPTION: DESCRIBED BY OCS 2003 - FOUND 3 3/4" OCS ALUMINUM BENCHMARK DISK STAMPED "3E-84-71", SET IN THE SOUTHEASTERLY CORNER OF A 3 FT. BY 22 FT. CONCRETE CATCH BASIN. MONUMENT IS LOCATED ALONG THE NORTHEASTERLY SIDE OF TRABUCO ROAD, 0.5 MILES SOUTHEASTERLY OF THE CENTERLINE OF EL TORO ROAD AND 42 FT. NORTHEASTERLY OF THE CENTER MEDIAN ALONG TRABUCO. MONUMENT IS SET LEVEL WITH THE SIDEWALK.

NOTES

THE SURVEY INFORMATION SHOWN HEREON IS TO BE USED FOR TOPOGRAPHIC RELATIONSHIPS ONLY AND IS NOT INTENDED FOR LAND ACQUISITION OR BOUNDARY PURPOSES.

SHEET INDEX

SHEET	NO.	DESCRIPTION
1	1	TITLE SHEET
2-4	2-4	BOUNDARY MAP
5	5	TOPOGRAPHIC MAP

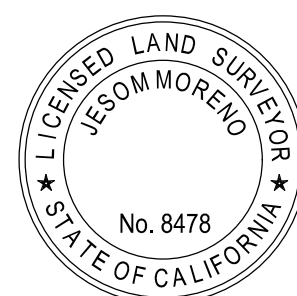
PURPOSE OF SURVEY

THE PURPOSE OF THE SURVEY IS TO TO RECORD ELEVATIONS AND ESTIMATE SEDIMENT STORED UNDER BRIDGE.

SENIOR LAND SURVEYOR'S CERTIFICATE:

THIS MAP CORRECTLY REPRESENTS A SURVEY MADE BY ME OR UNDER MY DIRECTION IN CONFORMANCE WITH REQUIREMENTS OF THE PROFESSIONAL LAND SURVEYOR'S ACT; THIS 7 DAY OF DECEMBER, 2021.

JESOM MORENO, PLS. SENIOR LAND SURVEYOR



DEPUTY COUNTY SURVEYOR'S STATEMENT:

THIS MAP HAS BEEN EXAMINED IN ACCORDANCE WITH THE PROFESSIONAL LAND SURVEYOR'S ACT; THIS 7 DAY OF DECEMBER, 2021.

WADE WEAVER, PLS. DEPUTY COUNTY SURVEYOR



TOPOGRAPHIC MAPPING PROJECT

FOUND CGPS "WHYT"
N: 2191882.25
E: 6137734.82
THIS IS A CONTINUOUS GPS STATION
(CGPS) AND IS PART OF THE CALIFORNIA
SPATIAL REFERENCE NETWORK (CSRN),
FROM WHICH DATA CAN BE DOWNLOADED
HERE: [HTTP://SOPACCSRC.UCD.EDU/](http://SOPACCSRC.UCD.EDU/).

			COUNTY OF ORANGE OC PUBLIC WORKS OC SURVEY/FIELD SERVICES/BOUNDARY ANALYSIS & MAPPING				
			ALISO CREEK UNDER TRABUCO RD RESTORATION				
			TITLE SHEET				
			PROJECT LIMITS: 200' UPSTREAM TRABUCO RD TO 50' DOWNSTREAM TRABUCO RD				
			DATE OF SURVEY: 06/21/2021		BY: J. JOHNS & CREW		SHEET NO. 1 of 5
			MAPPING		BY: I. ISLAS		
			OFFICE CHECK		BY: J. MORENO, PLS		
			FIELD CHECK		BY: J. JOHNS		
			SCALE: 1:100		W.O. #EF21287		
			FILE: ALISO CREEK RESTORATION UNDER TRABUCO RD_TOPO_2021.DWG		FILE # XXXX-XXXX		
MARK	DATE	ITEM					
REVISIONS							

MONUMENT NOTES

- 1

FOUND GEAR SPIKE AND 1–1/2" WASHER STAMPED "OCS", IN LIEU OF BOAT SPIKE AND OCS TAG PER (R6), DOWN 0.3' IN AC. ACCEPTED AS THE CENTERLINE INTERSECTION OF EL TORO RD. AND TRABUCO RD.
- 2

FOUND GEAR SPIKE AND 1–1/2" WASHER STAMPED "LS 5411" IN LIEU OF PUNCHED SPIKE AND WASHER STAMPED "ORANGE COUNTY SURVEYOR" PER (R8), FLUSH IN AC. ACCEPTED AS THE CENTERLINE E.C. OF TRABUCO RD.
- 3

FOUND GEAR SPIKE AND 1–1/2" WASHER STAMPED "LS 5411" IN LIEU OF SPIKE AND ILLEGIBLE WASHER PER (R9), DOWN 0.1' IN AC. ACCEPTED AS THE CENTERLINE INTERSECTION OF CHERRY AVE. AND TRABUCO RD.
- 4

FOUND 2" I.P. AND 3/4" TAG STAMPED "RCE 14814" PER (R10), DOWN 0.5' IN DIRT, ACCEPTED AS THE INTERSECTION OF THE SE'LY LINE OF PARCEL 1603 OF (R7) AND THE CENTERLINE OF TRABUCO RD.
- 5

FOUND SPIKE AND 1–1/4" WASGER STAMPED "RCE 14814" PER (R10), DOWN 0.3' IN AC. ACCEPTED AS THE CENTERLINE B.C. OF TRABUCO RD.
- 6

FOUND PUNCHED 2" ALUMINUM DISK STAMPED "LS 2921" IN LIEU OF 2" I.P. PER (R2), DOWN 1.8' IN OCS MONUMENT WELL, ACCEPTED AS A POINT ON THEON THE CENTERLINE OF CHERRY AVE.
- 7

FOUND DISTURBED SPIKE PER (R10), DOWN 0.2' IN AC. RECORDED AT BASE OF SPIKE, ACCEPTED AS THE CENTERLINE INTERSECTION OF CHERRY AVE. AND DARRIN DR.
- 8

FOUND PUNCHED 2" ALUMINUM DISK STAMPED "LS 2921" PER (R2), DOWN 1.8' IN OCS MONUMENT WELL, ACCEPTED AS THE INTERSECTION OF CHERRY AVE. AND BENNETT.
- 9

FOUND PUNCHED 2" ALUMINUM DISK STAMPED "LS 2921" PER (R3), DOWN 1.7' IN OCS MONUMENT WELL, ACCEPTED AS THE CENTERLINE INTERSECTION OF CHERRY AVE. AND FALLBROOK.
- 10

FOUND 2" I.P. W/ 3/4" TAG STAMPED "LS 2921" PER (R11), DOWN 0.8' IN DIRT. ACCEPTED AS A POINT ON THE E'LY TRACT BOUNDARY OF (R11).
- 11

FOUND 2" I.P. W/ NO TAG PER (R2), DOWN 0.9' IN DIRT, ACCEPTED AS A COMMON E'LY CORNER IN THE TRACT BOUNDARIES OF (R2) AND (R11).
- 12

FOUND 2" I.P. AND NAIL W/ 3/4" TAG STAMPED "LS 2921" PER (R2), DOWN 0.8' IN DIRT, S43°13'17"E 0.13' FROM THE SE'LY LINE OF PARCEL 1603 OF (R7).
- 13

FOUND 2" I.P. W/ 3/4" TAG STAMPED "LS 2921" PER (R3), DOWN 0.3' IN DIRT, S43°13'17"W 0.04' FROM THE ESTABLISHED E'LY COMMON CORNERS OF LOT A OF (R3) PARCEL 1603 OF (R7).
- 14

FOUND 2" I.P. AND NAIL W/ ILLEGIBLE 3/4" TAG PER (R3), DOWN 0.3' IN DIRT, S43°13'17"E 0.07' FROM THE ESTABLISHED NE'LY CORNER OF LOT A OF (R3).
- 15

FOUND ROUND HEAD SPIKE AND ILLEGIBLE 1–1/2" WASHER PER (R2), DOWN 0.2' IN AC. ACCEPTED AS THE CENTERLINE INTERSECTION OF BROOKHAVEN AND BENNETT.
- 16

FOUND PUNCHED 2–1/2" BRASS DISK STAMPED "LS 2921" IN LIEU OF 2" I.P. PER (R2), DOWN 1.8' IN OCS MONUMENT WELL, ACCEPTED AS THE INTERSECTION OF BROOKHAVEN AND GLENHURST.
- 17

FOUND ROUND HEAD SPIKE AND ILLEGIBLE 1–1/2" WASHER PER (R2), DOWN 0.2' IN AC. ACCEPTED AS THE CENTERLINE INTERSECTION OF BROOKHAVEN AND ALDERWOOD.
- 18

FOUND ROUND HEAD SPIKE AND 1–1/2" WASHER STAMPED "LS 2921" PER (R2), DOWN 0.1' IN AC. ACCEPTED AS A POINT ON THE CENTERLINE OF ALDERWOOD.
- 19

FOUND LEAD CONCRETE NAIL AND 3/4" TAG STAMPED "LS 2921" IN LIEU OF 1" I.P. PER (R2), ON TOP OF BLOCK WALL, ACCEPTED AS THE N'LY CORNER OF LOT 86 OF (R2).
- 20

FOUND LEAD TACK AND 3/4" TAG STAMPED "LS 2921" IN LIEU OF 2" I.P. PER (R2), FLUSH IN CONCRETE, ACCEPTED AS THE ANGLE POINT IN THE E'LY TRACT BOUNDARY OF (R2).
- 21

FOUND 2" I.P. AND 3/4" TAG STAMPED "LS 2921" PER (R2), DOWN 0.8' IN DIRT, N77°29'32"W 0.33' FROM THE ANGLE POINT IN THE E'LY TRACT BOUNDARY OF (R2).
- 22

FOUND 2" I.P. AND 3/4" TAG STAMPED "LS 2921" PER (R2), DOWN 1.0' IN DIRT, ACCEPTED AS THE ANGLE POINT IN THE E'LY TRACT BOUNDARY OF (R2).
- 23

FOUND 2" I.P. AND 3/4" TAG STAMPED "LS 2921" PER (R2), DOWN 0.5' IN DIRT, S07°55'43"W 0.21' FROM THE ANGLE POINT IN THE E'LY TRACT BOUNDARY OF (R2).
- 24

FOUND 2" I.P. AND 3/4" TAG STAMPED "LS 2921" PER (R2), DOWN 0.2' IN DIRT, ACCEPTED AS THE ANGLE POINT IN THE E'LY TRACT BOUNDARY OF (R2).
- 25

FOUND 2" I.P. AND 3/4" TAG STAMPED "LS 2921" PER (R2), DOWN 0.9' IN DIRT, ACCEPTED AS THE ANGLE POINT IN THE E'LY TRACT BOUNDARY OF (R2).
- 26

FOUND CONCRETE NAIL AND 3/4" TAG STAMPED "LS 2921" IN LIEU OF 2" I.P. PER (R2), FLUSH IN CONCRETE, ACCEPTED AS THE ANGLE POINT IN THE E'LY TRACT BOUNDARY OF (R2).
- 27

FOUND PUNCHED 2" ALUMINUM DISK STAMPED "LS 2921" IN LIEU OF 2" I.P. PER (R3), DOWN 1.7' IN OCS MONUMENT WELL, ACCEPTED AS A POINT ON THE CENTERLINE OF FALLBROOK.
- 28

FOUND ROUND HEAD SPIKE AND 1–1/2" WASHER STAMPED "LS 2921" PER (R3), DOWN 0.1' IN AC. ACCEPTED AS A POINT IN THE CUL–DE–SAC RADIUS OF FALLBROOK.
- 29

FOUND 2" I.P. W/ NO NAIL OR TAG PER (R3), DOWN 0.5' IN DIRT, MEASURED CENTER MASS OF IRON PIPE, ACCEPTED AS THE ANGLE POINT IN THE S'LY TRACT BOUNDARY OF (R3).
- 30

FOUND 2" I.P. AND 3/4" TAG STAMPED "LS 2921" PER (R3), DOWN 0.1' IN DIRT, ACCEPTED AS THE ANGLE POINT IN THE S'LY LINE OF LOT A OF (R3).
- 31

FOUND 2" I.P. W/ NO NAIL OR TAG PER (R3), DOWN 0.6' IN DIRT, MEASURED CENTER MASS OF IRON PIPE, ACCEPTED AS THE ANGLE POINT IN THE S'LY LINE OF LOT A OF (R3).
- 32

FOUND DISTURBED 2" I.P. W/ NO NAIL OR TAG PER (R3), FLUSH IN DIRT, MEASURED CENTER MASS OF IRON PIPE, S82°30'40"W 0.35' FROM THE ANGLE POINT IN THE S'LY LINE OF LOT A OF (R3).
- 33

FOUND 2" I.P. W/ NO NAIL OR TAG PER (R2), FLUSH IN DIRT, MEASURED CENTER MASS OF IRON PIPE, ACCEPTED AS THE ANGLE POINT IN THE S'LY LINE OF LOT A OF (R3).
- 34

FOUND 2" I.P. W/ NO NAIL OR TAG PER (R2), FLUSH IN DIRT, MEASURED CENTER MASS OF IRON PIPE, ACCEPTED AS THE ANGLE POINT IN THE S'LY LINE OF LOT A OF (R3).
- 35

FOUND 1" I.P. W/ PARTIALLY DESTROYED PLASTIC CAP STAMPED "LS 2XXX" PER (R3), DOWN 0.3' IN DIRT, ACCEPTED AS NW'LY CORNER OF LOT A OF (R3).
- 36

FOUND CONCRETE NAIL AND 3/4" TAG STAMPED "LS 2921" IN LIEU OF 1" I.P. PER (R3), ON BLOCK WALL, S20°58'25"W 0.09' FROM THE N'LY LINE OF LOT A OF (R3)
- 37

FOUND CONCRETE NAIL AND 3/4" TAG STAMPED "LS 2921" IN LIEU OF 1" I.P. PER (R3), ON BLOCK WALL, S20°58'25"W 0.38' FROM THE N'LY LINE OF LOT A OF (R3)
- 38

FOUND LEAD TACK AND 3/4" TAG STAMPED "LS 2921" PER (R3), FLUSH ON CONCRETE, ACCEPTED AS A POINT ON THE'LY PROLONGATION OF THE SE'LY LINE OF LOT 8 OF (R3).
- 39

FOUND LEAD TACK AND 3/4" TAG STAMPED "LS 2921" PER (R3), FLUSH ON CONCRETE, ACCEPTED AS A POINT ON THEHE NW'LY PROLONGATION OF THE S'LY LINE OF LOT 9 OF (R3).
- 40

FOUND EMPTY MONUMENT WELL, 1.6' DEEP, NOT ACCEPTED AS A POINT ON THEON THE CENTERLINE OF TRABUCO RD.

ESTABLISHMENT NOTES

- A

ESTABLISHED THE CENTERLINE OF TRABUCO RD. BY HOLDING A LINE BETWEEN MONUMENT NOTES 1 AND 2 .
- B

ESTABLISHED THE CENTERLINE OF TRABUCO RD. BY HOLDING RECORD COURSES AND CURVE DATA PER (R1) AND (R10) SE'LY AND TANGENT TO LINE ESTABLISHMENT A FROM MONUMENT NOTE 2 .
- C

ESTABLISHED THE CENTERLINE OF CHERRY AVE. BY HOLDING A LINE BETWEEN MONUMENT NOTES 3 AND 6 .
- D

ESTABLISHED THE CENTERLINE OF CHERRY RD. BY HOLDING A LINE BETWEEN MONUMENT NOTES 3 AND 7 .
- E

ESTABLISHED THE SE'LY LINE OF PARCEL 1603 OF (R7) BY HOLDING A LINE BETWEEN MONUMENT NOTES 4 AND 10 .
- F

ESTABLISHED THE SE'LY LINE OF PARCEL 1603 OF (R7) BY THE PROLONGATION OF ESTABLISHMENT NOTE E NE'LY FROM MONUMENT NOTE 4 . TO THE TERMINUS OF ESTABLISHMENT NOTE C .
- G

ESTABLISHED THE E'LY COMMON CORNERS OF LOT A OF (R3) PARCEL 1603 OF (R7) BY HOLDING MONUMENT NOTE 13 PERPENDICULAR TO LINE ESTABLISHMENT C .
- H

ESTABLISHED THE NE'LY CORNER OF LOT A OF (R3) BY HOLDING MONUMENT NOTE 14 PERPENDICULAR TO LINE ESTABLISHMENT C .
- I

ESTABLISHED THE CENTERLINE OF BENNETT BY HOLDING A LINE BETWEEN MONUMENT NOTES 8 AND 15 .
- J

ESTABLISHED THE CENTERLINE OF BROOKHAVEN BY HOLDING A LINE BETWEEN MONUMENT NOTES 15 AND 17 .
- K

ESTABLISHED THE CENTERLINE OF ALDERWOOD BY HOLDING A LINE BETWEEN MONUMENT NOTES 17 AND 18 .
- L

ESTABLISHED THE SE'LY RIGHT OF WAY OF CHERRY AVE. BY HOLDING A LINE PARALLEL WITH, AND A RECORD DISTANCE OF 30' PER (R2) SE'LY FROM LINE ESTABLISHMENT C .
- M

ESTABLISHED THE SE'LY TRACT BOUNDARY OF (R2) BY HOLDING A LINE PARALLEL WITH, AND A RECORD DISTANCE OF 30' PER (R2) SE'LY FROM LINE ESTABLISHMENT C .
- N

ESTABLISHED THE SW'LY RIGHT OF WAY OF TRABUCO RD. BY HOLDING A LINE PARALLEL WITH, AND A RECORD DISTANCE OF 70' PER (R2) SW'LY FROM LINE ESTABLISHMENT E .
- O

ESTABLISHED THE NE'LY TRACT BOUNDARY OF (R2) BY HOLDING A LINE PARALLEL WITH, AND A RECORD DISTANCE OF 50' PER (R2) SW'LY FROM LINE ESTABLISHMENT E .
- P

S.F.N. ESTABLISHED AN ANGLE POINT IN THE E'LY TRACT BOUNDARY OF (R2) BY HOLDING A RECORD DISTANCE OF 74.09' PER (R2) SW'LY FROM THE INTERSECTION OF LINE ESTABLISHMENTS E AND M .
- Q

S.F.N. ESTABLISHED AN ANGLE POINT IN THE N'LY TRACT BOUNDARY OF (R2) BY HOLDING A RECORD DISTANCE OF 29.52' PER (R2) SE'LY FROM ESTABLISHMENT NOTE B AND INTERSECTING CURVE ESTABLISHMENT O .
- R

S.F.N. ESTABLISHED AN ANGLE POINT IN THE E'LY TRACT BOUNDARY OF (R2) BY HOLDING RECORD CURVE DATA PER (R2) SE'LY FROM ESTABLISHMENT NOTE O ALONG CURVE ESTABLISHMENT C .
- S

S.F.N. ESTABLISHED AN ANGLE POINT IN THE E'LY TRACT BOUNDARY OF (R2) BY DISTANCE–DISTANCE–INTERSECTION BETWEEN MONUMENT NOTE 20 AND ESTABLISHMENT NOTE E .
- T

S.F.N. ESTABLISHED AN ANGLE POINT IN THE SW'LY RIGHT OF WAY OF TRABUCO RD. BY HOLDING A RECORD DISTANCE OF 127.71' PER (R2) SE'LY FROM MONUMENT NOTE 19 AND INTERSECTING CURVEY ESTABLISHMENT M .
- U

ESTABLISHED THE SW'LY RIGHT OF WAY OF TRABUCO RD. BY HOLDING A LINE BETWEEN MONUMENT NOTE 19 AND ESTABLISHMENT NOTE T .
- V

ESTABLISHED THE N'LY TRACT BOUNDARY OF (R2) BY HOLDING A LINE BETWEEN ESTABLISHMENT NOTES B AND C .
- W

ESTABLISHED THE NE'LY TRACT BOUNDARY OF (R2) BY HOLDING A LINE BETWEEN ESTABLISHMENT NOTES B AND C .
- X

ESTABLISHED THE NW'LY LINE OF PARCEL 1603 OF (R7) BY HOLDING A LINE BETWEEN MONUMENT NOTE 20 AND ESTABLISHMENT NOTE S .
- Y

ESTABLISHED THE E'LY LINE OF PARCEL 1603 OF (R7) BY DISTANCE–DISTANCE–INTERSECTION PER (R2) BETWEEN MONUMENT NOTES 20 AND 22 .
- Z

ESTABLISHED THE E'LY LINE OF PARCEL 1603 OF (R7) BY DISTANCE–DISTANCE–INTERSECTION PER (R2) BETWEEN MONUMENT NOTES 22 AND 24 .
- AA

ESTABLISHED THE SE'LY LINE OF PARCEL 1603 OF (R7) BY HOLDING A LINE BETWEEN MONUMENT NOTE 20 AND ESTABLISHMENT NOTE Y .
- AB

ESTABLISHED THE NW'LY LINE OF PARCEL 1603 OF (R7) BY HOLDING A LINE BETWEEN MONUMENT NOTE 22 AND ESTABLISHMENT NOTE Y .
- AC

ESTABLISHED THE SW'LY LINE OF PARCEL 1603 OF (R7) BY HOLDING A LINE BETWEEN MONUMENT NOTE 22 AND ESTABLISHMENT NOTE Z .
- AD

ESTABLISHED THE NW'LY LINE OF PARCEL 1603 OF (R7) BY HOLDING A LINE BETWEEN MONUMENT NOTE 24 AND ESTABLISHMENT NOTE Z .
- AE

ESTABLISHED THE SW'LY LINE OF PARCEL 1603 OF (R7) BY HOLDING A LINE BETWEEN MONUMENT NOTES 24 AND 23 .
- AF

ESTABLISHED THE NW'LY LINE OF PARCEL 1603 OF (R7) BY HOLDING A LINE BETWEEN MONUMENT NOTES 23 AND 26 .
- AG

ESTABLISHED A POINT ON THE CENTERLINE OF ALDERWOOD BY PROPORTION PER (R2).
- AH

ESTABLISHED THE RIGHT OF WAY OF ALDERWOOD BY HOLDING RECORD COURSES PER (R2) FROM ESTABLISHMENT NOTE B .
- AI

S.F.N. ESTABLISHED THE S'LY CORNER OF LOT E OF (R2) BY HOLDING A RECORD DISTANCE OF 5' PER (R2) NE'LY FROM MONUMENT NOTE 24 ALONG LINE ESTABLISHMENT B .
- AJ

ESTABLISHED THE NE'LY CORNER OF LOT 81 OF (R2) BY HOLDING RECORD CURVE DATA PER (R2) SW'LY FROM THE INTERSECTION OF LINE ESTABLISHMENT B AND CURVE ESTABLISHMENT B ALONG CURVE ESTABLISHMENT B .
- AK

ESTABLISHED THE W'LY LINE OF LOT E OF (R2) BY HOLDING A LINE RADIAL TO CURVE ESTABLISHMENT B SE'LY FROM ESTABLISHMENT NOTE B .
- AL

ESTABLISHED AN ANGLE POINT IN THE W'LY LINE OF LOT E OF (R2) BY HOLDING A RECORD DISTANCE OF 19.84' PER (R2) SE'LY FROM ESTABLISHMENT NOTE B ALONG LINE ESTABLISHMENT B .
- AM

S.F.N. ESTABLISHED AN ANGLE POINT IN W'LY LINE OF LOT E OF (R2) BY RECORD DISTANCE INTERSECTION PER (R2), NW'LY FROM NOTE B AND SW'LY NOTE B BETWEEN ESTABLISHMENT NOTES A AND B .
- AN

ESTABLISHED THE NW'LY LINE OF LOT E OF (R2) BY HOLDING A LINE BETWEEN ESTABLISHMENT NOTES B AND B .
- AO

ESTABLISHED THE SW'LY LINE OF LOT E OF (R2) BY HOLDING A LINE BETWEEN ESTABLISHMENT NOTES B AND B .
- AP

ESTABLISHED THE CENTERLINE OF FALLBROOK BY HOLDING A LINE BETWEEN MONUMENT NOTES 9 AND 27 .
- AQ

ESTABLISHED THE NE'LY RIGHT OF WAY OF FALLBROOK BY HOLDING A LINE PARALLEL AND RECORD DISTANCE 26' PER (R3) NE'LY FROM LINE ESTABLISHMENT B .
- AR

ESTABLISHED THE SW'LY RIGHT OF WAY OF FALLBROOK BY HOLDING A LINE PARALLEL AND RECORD DISTANCE 26' PER (R3) NE'LY FROM LINE ESTABLISHMENT B .
- AS

ESTABLISHED THE SE'LY TRACT BOUNDARY OF (R3) BY HOLDING A LINE PARALLEL WITH, AND A RECORD DISTANCE OF 30' PER (R2) SE'LY FROM LINE ESTABLISHMENT D .
- AT

ESTABLISHED THE NE'LY RIGHT OF WAY OF TRABUCO RD. BY HOLDING A LINE PARALLEL WITH, AND A RECORD DISTANCE OF 70' PER (R2) NE'LY FROM LINE ESTABLISHMENT E .

- AL

ESTABLISHED THE SW'LY TRACT BOUNDARY OF (R3) BY HOLDING A LINE PARALLEL WITH, AND A RECORD DISTANCE OF 60' PER (R3) NE'LY FROM LINE ESTABLISHMENT B .
- AV

ESTABLISHED A POINT ON THE N'LY LINE OF PARCEL 1603 OF (R7) BY HOLDING A RECORD DISTANCE OF 54.20' PER (R2) SE'LY FROM THE E.C. OF LINE ESTABLISHMENT B .
- AW

ESTABLISHED THE NE'LY LINE OF PARCEL 1603 OF (R7) HOLDING A LINE BETWEEN MONUMENT NOTE 30 AND ESTABLISHMENT NOTE B .
- AX

ESTABLISHED THE NW'LY LINE OF PARCEL 1603 OF (R7) BY HOLDING A LINE BETWEEN MONUMENT NOTES 30 AND 31 .
- AY

ESTABLISHED AN ANGLE POINT IN THE NW'LY LINE OF PARCEL 1603 OF (R7) BY DISTANCE– DISTANCE–INTERSECTION PER (R3) BETWEEN MONUMENT NOTES 31 AND 33 .
- AZ

ESTABLISHED THE NE'LY LINE OF PARCEL 1603 OF (R7) BY HOLDING A LINE BETWEEN MONUMENT NOTE 31 AND ESTABLISHMENT NOTE B .
- BA

ESTABLISHED THE NW'LY LINE OF PARCEL 1603 OF (R7) BY HOLDING A LINE BETWEEN MONUMENT NOTE 33 AND ESTABLISHMENT NOTE B .
- BB

ESTABLISHED THE NE'LY LINE OF PARCEL 1603 OF (R7) BY HOLDING A LINE BETWEEN MONUMENT NOTES 33 AND 34 .
- BC

ESTABLISHED THE N'LY LINE OF PARCEL 1603 OF (R7) BY HOLDING A LINE BETWEEN MONUMENT NOTE 34 AND ESTABLISHMENT NOTE C .
- BD

S.F.N. ESTABLISHED AN ANGLE POINT IN THE S'LY TRACT BOUNDARY OF (R3) BY HOLDING A RECORD DISTANCE OF 202.20' PER (R3) NW'LY FROM MONUMENT NOTE 30 ALONG LINE ESTABLISHMENT B .
- BE

ESTABLISHED THE E'LY TRACT BOUNDARY OF (R3) BY HOLDING A LINE BETWEEN MONUMENT NOTE 23 AND ESTABLISHMENT NOTE E .
- BF

ESTABLISHED THE NE'LY LINE OF LOT A OF (R3) BY HOLDING THE ANGULAR RELATIONSHIP OF LINE ESTABLISHMENT B PER (R3) AT MONUMENT NOTE 35 .
- BG

ESTABLISHED THE RIGHT OF WAY OF FALLBROOK BY HOLDING RECORD COURSES PER (R3) FROM MONUMENT NOTE NE'LY 27 .
- BH

ESTABLISHED THE NW'LY LINE OF LOT A OF (R3) BY HOLDING PROLONGATION OF A LINE BETWEEN MONUMENT NOTES 28 AND 38 SW'LY FROM CURVE ESTABLISHMENT B .
- BI

S.F.N. ESTABLISHED AN ANGLE POINT IN THE N'LY LINE OF LOT A OF (R3) BY INTERSECTION OF LINE ESTABLISHMENTS B AND B .
- BJ

ESTABLISHED THE NE'LY LINE OF LOT A OF (R3) BY HOLDING PROLONGATION OF A LINE BETWEEN MONUMENT NOTES 28 AND 39 SE'LY FROM CURVE ESTABLISHMENT B .
- BK

S.F.N. ESTABLISHED AN ANGLE POINT IN THE N'LY LINE OF LOT A OF (R3) BY HOLDING A CALCULATED RECORD DISTANCE OF 76.75' PER (R3) SE'LY FROM MONUMENT NOTE 28 .
- BL

ESTABLISHED THE N'LY LINE OF LOT A OF (R3) BY HOLDING A LINE BETWEEN ESTABLISHMENT NOTES H AND B .

NOTES

ALL BOUNDARY LINES NOT SHOWN IN BOLD ARE FOR GRAPHICAL REPRESENTATION ONLY.

RECORD DISTANCES SHOWN HEREON ARE AS THEY APPEAR ON THE DOCUMENT OF RECORD. DISTANCES MAY BE EITHER GRID OR GROUND, AS PER SAID RECORD.

REFERENCE DOCUMENTS IN THE REFERENCE LEGEND ARE LIVE HYPERLINKS TO SAID DOCUMENT.

MONUMENT SYMBOLS CONTAIN LIVE HYPERLINKS TO IMAGES, IF THEY EXIST, OF RESPECTIVE MONUMENT.

BASIS OF BEARINGS

THE BASIS OF BEARINGS FOR THIS SURVEY IS BASED ON THE CALIFORNIA COORDINATE SYSTEM (CCS83), ZONE VI, NAD 83, OCS (2017.50) EPOCH ADJUSTMENT, AS DETERMINED LOCALLY BY A LINE BETWEEN CONTINUOUS GLOBAL POSITIONING STATIONS CGPS STATIONS (WHYT) AND (SBCC) BEING NORTH 07°50'54" EAST AS DERIVED FROM THE COORDINATES PUBLISHED BY THE CALIFORNIA SPATIAL REFERENCE CENTER (CSRC) ALONG WITH DATA SHEETS ON FILE IN THE OFFICE OF THE ORANGE COUNTY SURVEYOR.

HORIZONTAL DATUM

COORDINATES SHOWN ARE BASED ON THE CALIFORNIA COORDINATE SYSTEM (CCS83), ZONE VI, NAD 83, OCS (2017.50) EPOCH ADJUSTMENT.

ALL DISTANCES SHOWN ARE GRID, UNLESS OTHERWISE NOTED. TO OBTAIN GROUND DISTANCE MULTIPLY A GRID DISTANCE BY 1.00005129.

COMBINATION FACTOR WAS HELD AT: CP#3711
N:2176880.75' E:6127461.68' ELEVATION= 505.34'

RECORD DISTANCES SHOWN HEREON ARE AS THEY APPEAR ON THE DOCUMENT OF RECORD. DISTANCES MAY BE EITHER GRID OR GROUND, AS PER SAID RECORD.

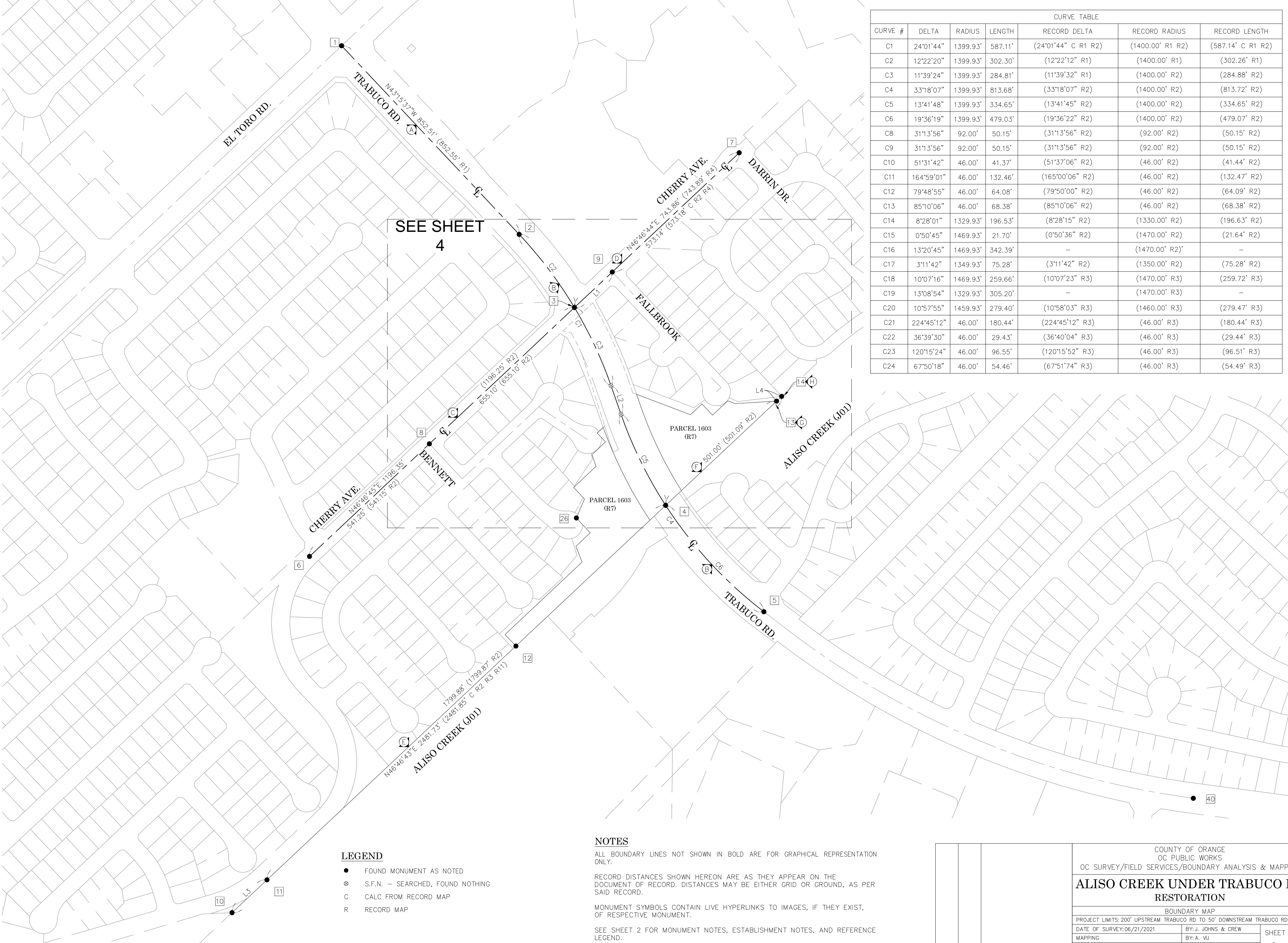
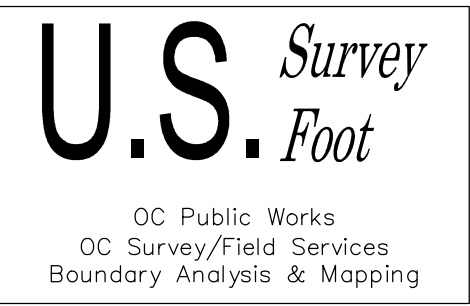
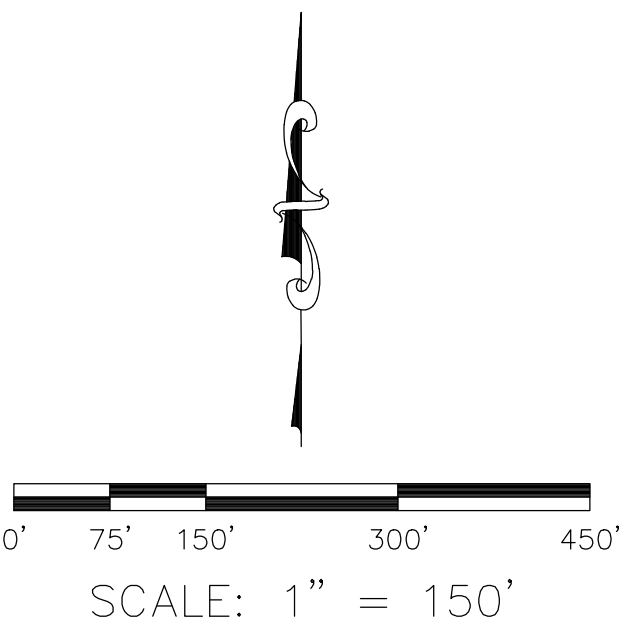
ALL DISTANCES ARE BASED ON THE U.S. SURVEY FOOT.

REFERENCES

- (R1) = TRACT NO. 8083, M.M. 385/23–25
- (R2) = TRACT NO. 10262, M.M. 456/37–40
- (R3) = TRACT NO. 9808, M.M. 490/34–35
- (R4) = TRACT NO. 10471, M.M. 444/43–46
- (R5) = TRACT NO. 8991, M.M. 442/24–26
- (R6) = O.C.S. ALIGNMENT NOTE, A/6–8/2457–2460
- (R7) = DEED, BOOK 12579, PAGE 487, O.R.
- (R8) = CORNER RECORD, C.R. 2012–1386B
- (R9) = CORNER RECORD, C.R. 2012–1387B
- (R10) = O.C.S. ALIGNMENT NOTE, A/4–8/2987–2993
- (R11) = TRACT NO. 10261, M.M. 452/26–28
- (R12) = O.C. ROAD RIGHT OF WAY MAP, Y29/1–3, PAGE 2 [DEED, BOOK 111435, PAGE 667, O.R. ILLEGIBLE]

			COUNTY OF ORANGE OC PUBLIC WORKS OC SURVEY/FIELD SERVICES/BOUNDARY ANALYSIS & MAPPING			
			ALISO CREEK UNDER TRABUCO RD RESTORATION			
			BOUNDARY MAP			
			PROJECT LIMITS: 200' UPSTREAM TRABUCO RD TO 50' DOWNSTREAM TRABUCO RD			
			DATE OF SURVEY:06/21/2021		BY: J. JOHNS & CREW	
MAPPING		BY:A. VU				
OFFICE CHECK		BY:J. MORENO, PLS				
FIELD CHECK		BY:J. JOHNS				
SCALE: N/A		W.O. #EF21287				
MARK	DATE	ITEM	FILE #XXXX-XXXX			
REVISIONS			FILE:ALISO CRK RESTORE UNDER TRABUCO RD_BOUNDARY_2021.DWG			

LINE TABLE			
LINE #	BEARING	MEASURED DISTANCE	RECORD DISTANCE
L1	N46°46'44"E	170.72'	(170.71' R3)
L2	N19°13'53"W	99.30'	(99.30' R2)
L3	N46°46'43"E	157.83'	(157.89' R11)
L4	N46°46'43"E	23.01'	(23.00' R3)
L5	N55°58'56"W	71.55'	(71.55' R2)
L6	N57°08'09"W	27.71'	(27.71' R2)
L7	N19°13'53"W	99.30'	(99.30' R2)
L8	N46°46'45"E	74.09'	(74.09' R2)
L9	N76°20'38"W	29.52'	(29.52' R2)
L10	N46°53'47"E	7.01'	(7.00' R2)
L11	N46°53'47"E	19.51'	(19.51' R2)
L12	N46°53'47"E	7.22'	(7.22' R2)
L13	N46°53'47"E	33.73'	(33.73' R2)
L14	N43°09'09"W	20.64'	(20.73' R2)
L15	N43°09'09"W	19.36'	(19.27' R2)
L16	N43°09'09"W	40.00'	(40.00' R2)
L17	N46°46'49"E	61.00'	(61.00' R2)
L18	N18°41'03"W	41.05'	(41.05' R2)
L19	N46°41'47"E	100.99'	(101.00' R2)
L20	N43°14'33"W	51.99'	(51.99' R2)
L21	N22°58'51"E	68.03'	(68.04' R2)
L22	N14°33'55"W	19.84'	(19.84' R2)
L23	N33°56'21"E	106.89'	(106.90' R2)
L24	N19°13'53"W	54.20'	(54.20' R2)
L25	N19°13'53"W	45.10'	(45.10' C R3)
L26	N46°46'44"E	61.66'	(61.66' R3)
L27	N19°13'53"W	46.45'	(46.46' R3)
L28	N69°13'19"W	189.67'	(189.75' R3)
L29	N46°57'33"E	51.97'	(52.00' R2)
L30	N43°10'22"W	50.71'	(50.71' R3)
L31	N46°42'54"E	69.13'	(69.13' R3)
L32	N69°17'59"W	25.65'	(25.63' R3)
L33	N86°36'55"E	136.52'	(136.51' R3)
L34	N69°01'35"W	214.09'	(214.00' R3)
L35	N54°53'00"E	45.02'	(45.12' R3)
L36	N46°47'35"E	19.98'	(20.00' R3)
L37	N65°22'24"W	30.75'	(30.75' R3)
L38	N83°17'20"E	145.63'	(145.70' R3)
L39	N45°55'54"W	1.97'	(1.97' R2)
L40	N46°41'47"E	5.00'	(5.00' R2)
L41	N34°52'31"E	0.51'	(0.53' R3)
L42	S68°56'09"E	54.21'	(54.00' R3)
L43	S68°48'04"E	74.92'	(75.00' R3)
L44	S69°16'58"E	84.94'	(85.00' R3)



CURVE TABLE						
CURVE #	DELTA	RADIUS	LENGTH	RECORD DELTA	RECORD RADIUS	RECORD LENGTH
C1	24°01'44"	1399.93'	587.11'	(24°01'44" C R1 R2)	(1400.00' R1 R2)	(587.14' C R1 R2)
C2	12°22'20"	1399.93'	302.30'	(12°22'12" R1)	(1400.00' R1)	(302.26' R1)
C3	11°39'24"	1399.93'	284.81'	(11°39'32" R1)	(1400.00' R2)	(284.88' R2)
C4	33°18'07"	1399.93'	813.68'	(33°18'07" R2)	(1400.00' R2)	(813.72' R2)
C5	13°41'48"	1399.93'	334.65'	(13°41'45" R2)	(1400.00' R2)	(334.65' R2)
C6	19°36'19"	1399.93'	479.03'	(19°36'22" R2)	(1400.00' R2)	(479.07' R2)
C8	31°13'56"	92.00'	50.15'	(31°13'56" R2)	(92.00' R2)	(50.15' R2)
C9	31°13'56"	92.00'	50.15'	(31°13'56" R2)	(92.00' R2)	(50.15' R2)
C10	51°31'42"	46.00'	41.37'	(51°37'06" R2)	(46.00' R2)	(41.44' R2)
C11	164°59'01"	46.00'	132.46'	(165°00'06" R2)	(46.00' R2)	(132.47' R2)
C12	79°48'55"	46.00'	64.08'	(79°50'00" R2)	(46.00' R2)	(64.09' R2)
C13	85°10'06"	46.00'	68.38'	(85°10'06" R2)	(46.00' R2)	(68.38' R2)
C14	8°28'01"	1329.93'	196.53'	(8°28'15" R2)	(1330.00' R2)	(196.63' R2)
C15	0°50'45"	1469.93'	21.70'	(0°50'36" R2)	(1470.00' R2)	(21.64' R2)
C16	13°20'45"	1469.93'	342.39'	—	(1470.00' R2)'	—
C17	3°11'42"	1349.93'	75.28'	(3°11'42" R2)	(1350.00' R2)	(75.28' R2)
C18	10°07'16"	1469.93'	259.66'	(10°07'23" R3)	(1470.00' R3)	(259.72' R3)
C19	13°08'54"	1329.93'	305.20'	—	(1470.00' R3)	—
C20	10°57'55"	1459.93'	279.40'	(10°58'03" R3)	(1460.00' R3)	(279.47' R3)
C21	224°45'12"	46.00'	180.44'	(224°45'12" R3)	(46.00' R3)	(180.44' R3)
C22	36°39'30"	46.00'	29.43'	(36°40'04" R3)	(46.00' R3)	(29.44' R3)
C23	120°15'24"	46.00'	96.55'	(120°15'52" R3)	(46.00' R3)	(96.51' R3)
C24	67°50'18"	46.00'	54.46'	(67°51'74" R3)	(46.00' R3)	(54.49' R3)

NOTES

ALL BOUNDARY LINES NOT SHOWN IN BOLD ARE FOR GRAPHICAL REPRESENTATION ONLY.

RECORD DISTANCES SHOWN HEREON ARE AS THEY APPEAR ON THE DOCUMENT OF RECORD. DISTANCES MAY BE EITHER GRID OR GROUND, AS PER SAID RECORD.

MONUMENT SYMBOLS CONTAIN LIVE HYPERLINKS TO IMAGES, IF THEY EXIST, OF RESPECTIVE MONUMENT.

SEE SHEET 2 FOR MONUMENT NOTES, ESTABLISHMENT NOTES, AND REFERENCE LEGEND.

LEGEND

- FOUND MONUMENT AS NOTED
- ⊗ S.F.N. – SEARCHED, FOUND NOTHING
- C CALC FROM RECORD MAP
- R RECORD MAP

			COUNTY OF ORANGE OC PUBLIC WORKS OC SURVEY/FIELD SERVICES/BOUNDARY ANALYSIS & MAPPING					
			ALISO CREEK UNDER TRABUCO RD RESTORATION					
			BOUNDARY MAP					
			PROJECT LIMITS: 200' UPSTREAM TRABUCO RD TO 50' DOWNSTREAM TRABUCO RD					
			DATE OF SURVEY: 06/21/2021		BY: J. JOHNS & CREW		SHEET NO. 3 of 5	
			MAPPING		BY: A. VU			
			OFFICE CHECK		BY: J. MORENO, PLS			
			FIELD CHECK		BY: J. JOHNS			
			MARK	DATE	ITEM	SCALE: 1" = 150' W.O. #EF21287 FILE #XXXX-XXXX		
			REVISIONS			FILE: ALISO CRK RESTORE UNDER TRABUCO RD_BOUNDARY_2021.DWG		

NOTES

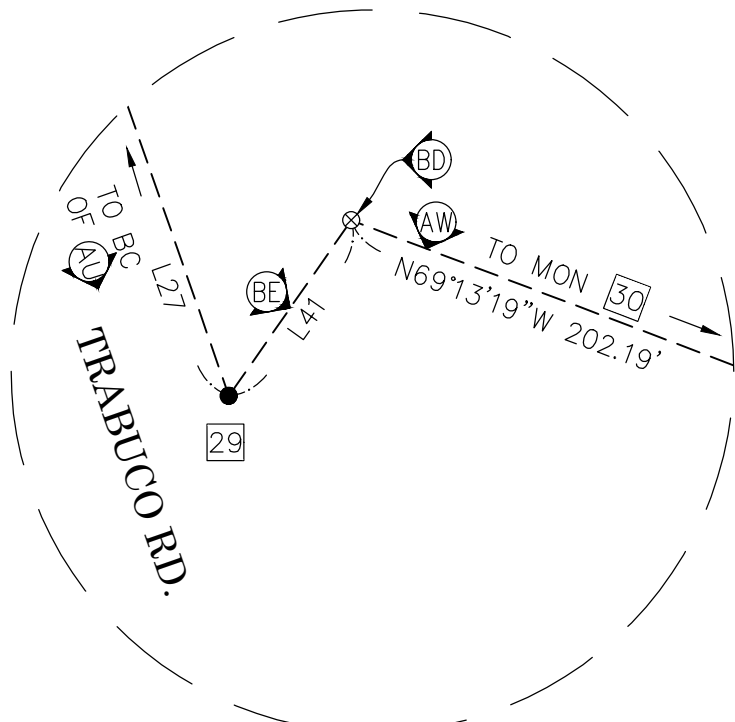
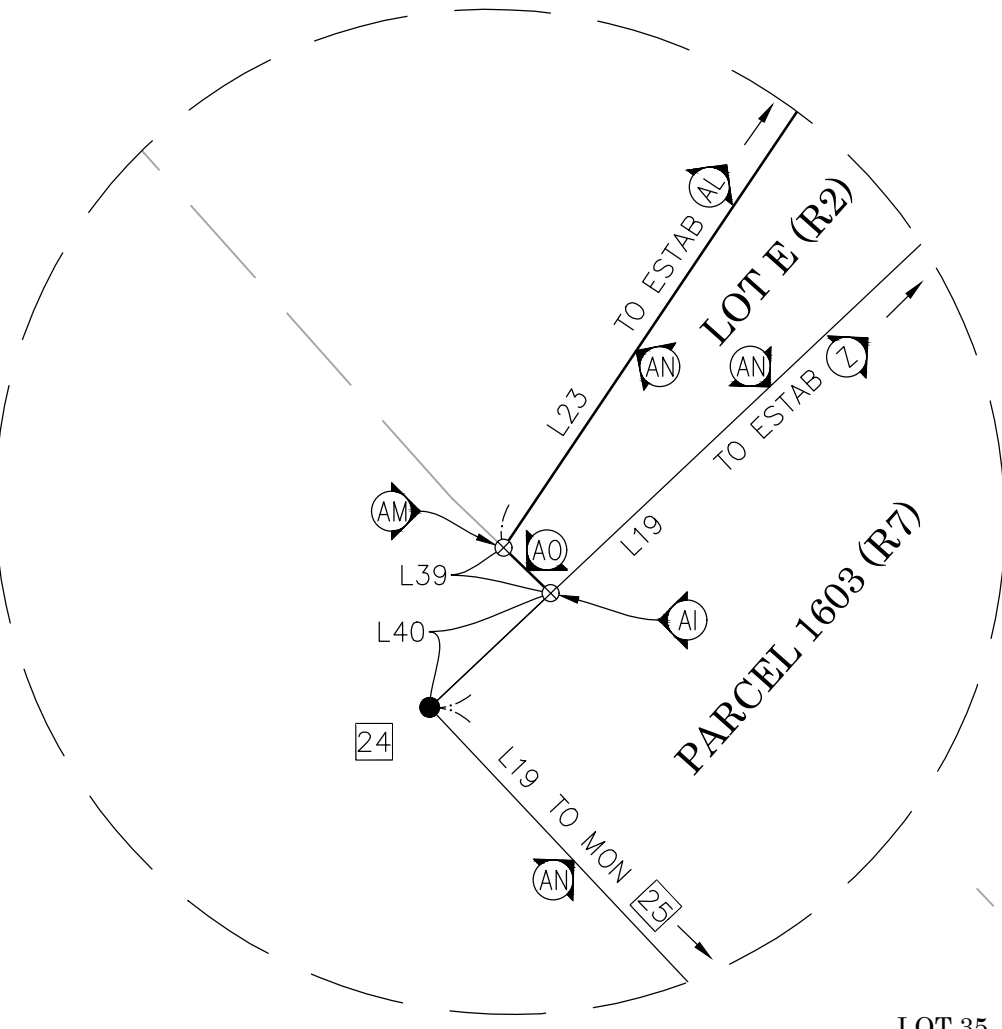
ALL BOUNDARY LINES NOT SHOWN IN BOLD ARE FOR GRAPHICAL REPRESENTATION ONLY.

RECORD DISTANCES SHOWN HEREON ARE AS THEY APPEAR ON THE DOCUMENT OF RECORD. DISTANCES MAY BE EITHER GRID OR GROUND, AS PER SAID RECORD.

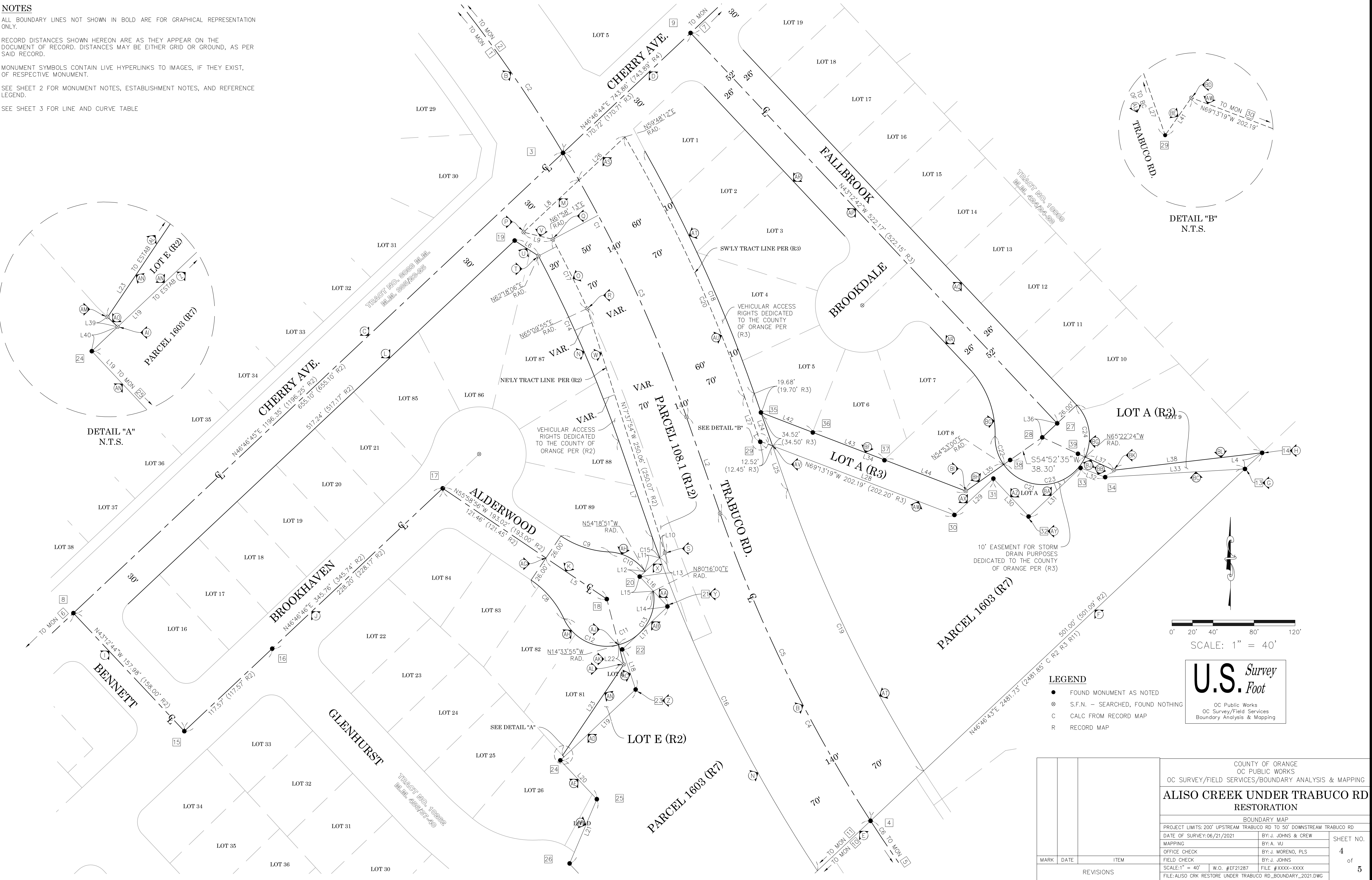
MONUMENT SYMBOLS CONTAIN LIVE HYPERLINKS TO IMAGES, IF THEY EXIST, OF RESPECTIVE MONUMENT.

SEE SHEET 2 FOR MONUMENT NOTES, ESTABLISHMENT NOTES, AND REFERENCE LEGEND.

SEE SHEET 3 FOR LINE AND CURVE TABLE



DETAIL "B"
N.T.S.



- LEGEND**
- FOUND MONUMENT AS NOTED
 - ⊙ S.F.N. — SEARCHED, FOUND NOTHING
 - C CALC FROM RECORD MAP
 - R RECORD MAP

U.S. Survey
Foot

OC Public Works
OC Survey/Field Services
Boundary Analysis & Mapping

				COUNTY OF ORANGE OC PUBLIC WORKS OC SURVEY/FIELD SERVICES/BOUNDARY ANALYSIS & MAPPING	
				ALISO CREEK UNDER TRABUCO RD RESTORATION	
				BOUNDARY MAP	
				PROJECT LIMITS: 200' UPSTREAM TRABUCO RD TO 50' DOWNSTREAM TRABUCO RD	
		DATE OF SURVEY: 06/21/2021		BY: J. JOHNS & CREW	
		MAPPING		BY: A. VU	
		OFFICE CHECK		BY: J. MORENO, PLS	
		FIELD CHECK		BY: J. JOHNS	
MARK	DATE	ITEM		SHEET NO. 4 of 5	
REVISIONS					
		SCALE: 1" = 40'	W.O. #EF21287	FILE #XXXX-XXXX	
		FILE: ALISO CRK RESTORE UNDER TRABUCO RD_BOUNDARY_2021.DWG			

LEGEND

AREA PATTERN KEY

Concrete

Dirt

Gravel

Rip Rap

SYMBOL

Control Box Undefined

Control Point

Grate Inlet

Manhole Water

Meter Undefined

Meter Water

Pier Column

Pipe Inlet/Outlet

Post

Sign Post

Tree

Tree, Palm

Valve Gas

Valve Water

Vault Undefined

Vent Pipe

LINE PATTERN KEY

Centerline

Concrete Wall

Edge of Concrete

Edge of Asphalt Pavement

Flowline

Grade Line

Hand Rail

Hinge Point

Right of Way

Roof Overhang

ABBREVIATION

CL

CMP

CONC

CP

DN

EL

FD

INV

PP

RCP

Centerline

Corrugated Metal Pipe

Concrete

Control Point

Down

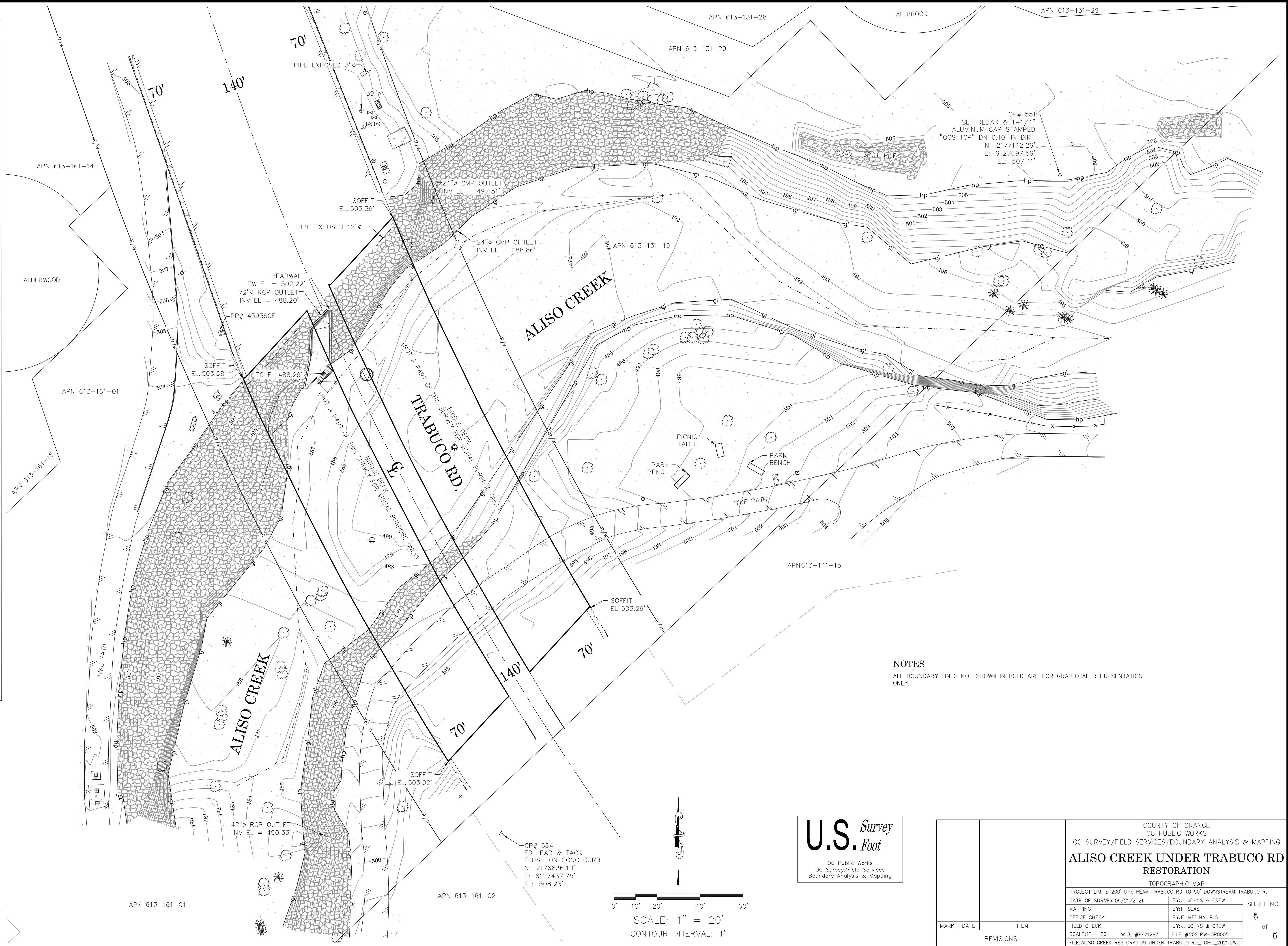
Elevation

Found

Invert

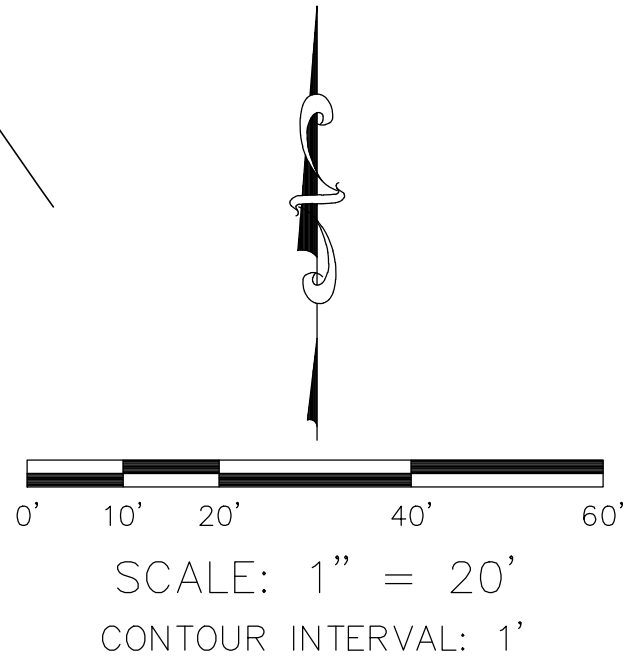
Power Pole

Reinforced Concrete Pipe



NOTES

ALL BOUNDARY LINES NOT SHOWN IN BOLD ARE FOR GRAPHICAL REPRESENTATION ONLY.



U.S. Survey

Foot

OC Public Works

OC Survey/Field Services

Boundary Analysis & Mapping

				COUNTY OF ORANGE OC PUBLIC WORKS OC SURVEY/FIELD SERVICES/BOUNDARY ANALYSIS & MAPPING	
				ALISO CREEK UNDER TRABUCO RD RESTORATION	
				TOPOGRAPHIC MAP	
				PROJECT LIMITS: 200' UPSTREAM TRABUCO RD TO 50' DOWNSTREAM TRABUCO RD	
		DATE OF SURVEY: 06/21/2021		BY: J. JOHNS & CREW	
		MAPPING		BY: I. ISLAS	
		OFFICE CHECK		BY: E. MEDINA, PLS	
		FIELD CHECK		BY: J. JOHNS & CREW	
		SCALE: 1" = 20'		W.O. #EF21287	
		FILE: ALISO CREEK RESTORATION UNDER		FILE # 2021PW-OP0005	
				TRABUCO RD_TOPO_2021.DWG	
MARK	DATE	ITEM		SHEET NO. 5 of 5	
		REVISIONS			