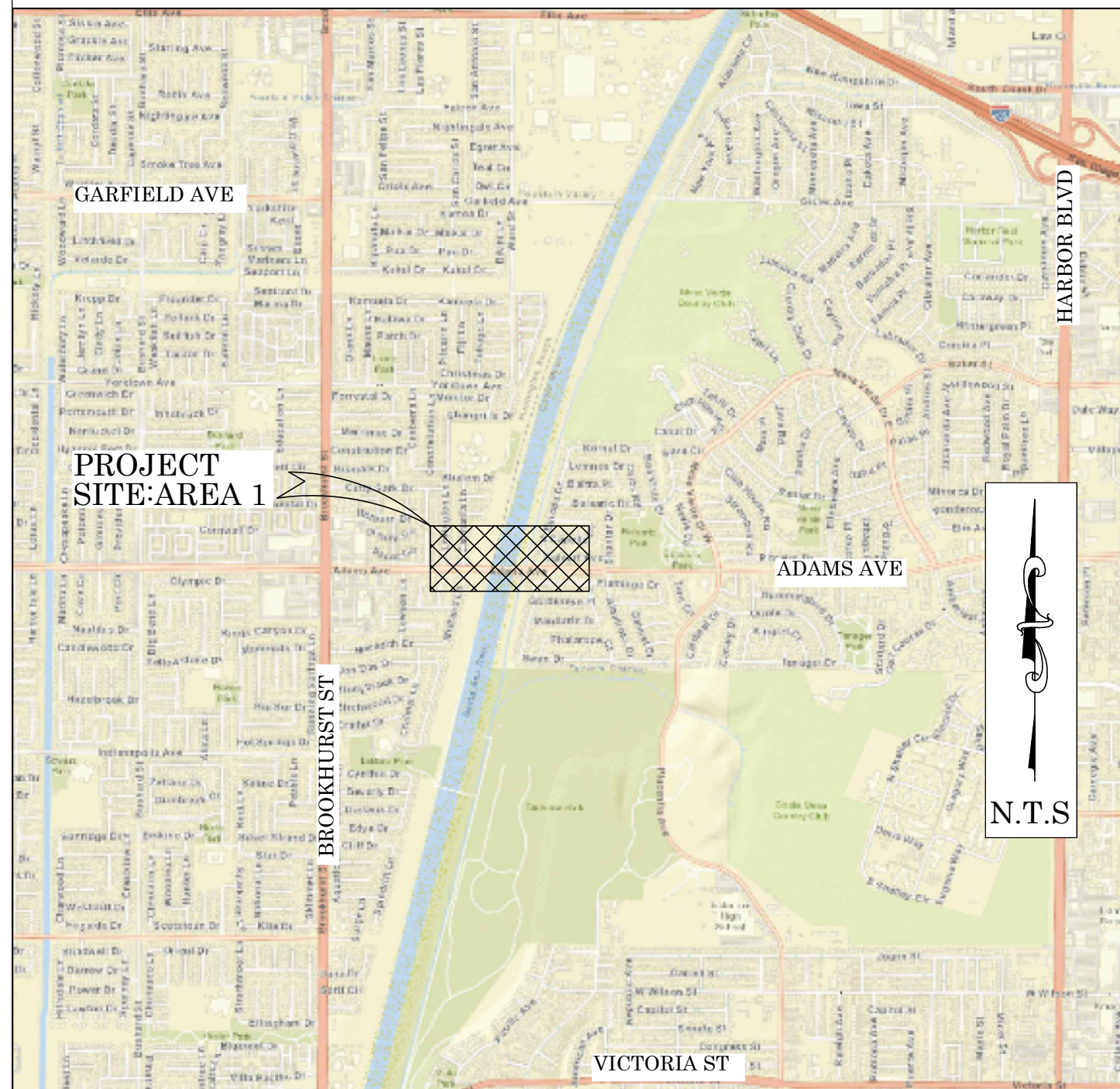




OC PUBLIC WORKS DEPARTMENT
KHALID BAZMI, PE, INTERIM DIRECTOR
KEVIN HILLS, COUNTY SURVEYOR
ADAMS AVE BRIDGE OVER S.A.R.(E01) &
GREENVILLE BANNING CHANNEL (D03)



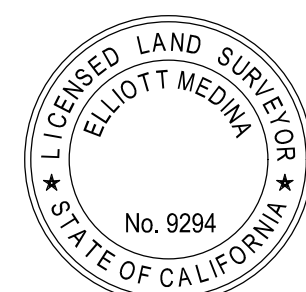
LOCATION MAP



SENIOR LAND SURVEYOR'S CERTIFICATE:

THIS MAP CORRECTLY REPRESENTS A SURVEY MADE BY ME OR UNDER MY DIRECTION IN CONFORMANCE WITH REQUIREMENTS OF THE PROFESSIONAL LAND SURVEYOR'S ACT; THIS 27TH DAY OF APRIL, 2020.

ELLIOTT MEDINA, PLS. SENIOR LAND SURVEYOR



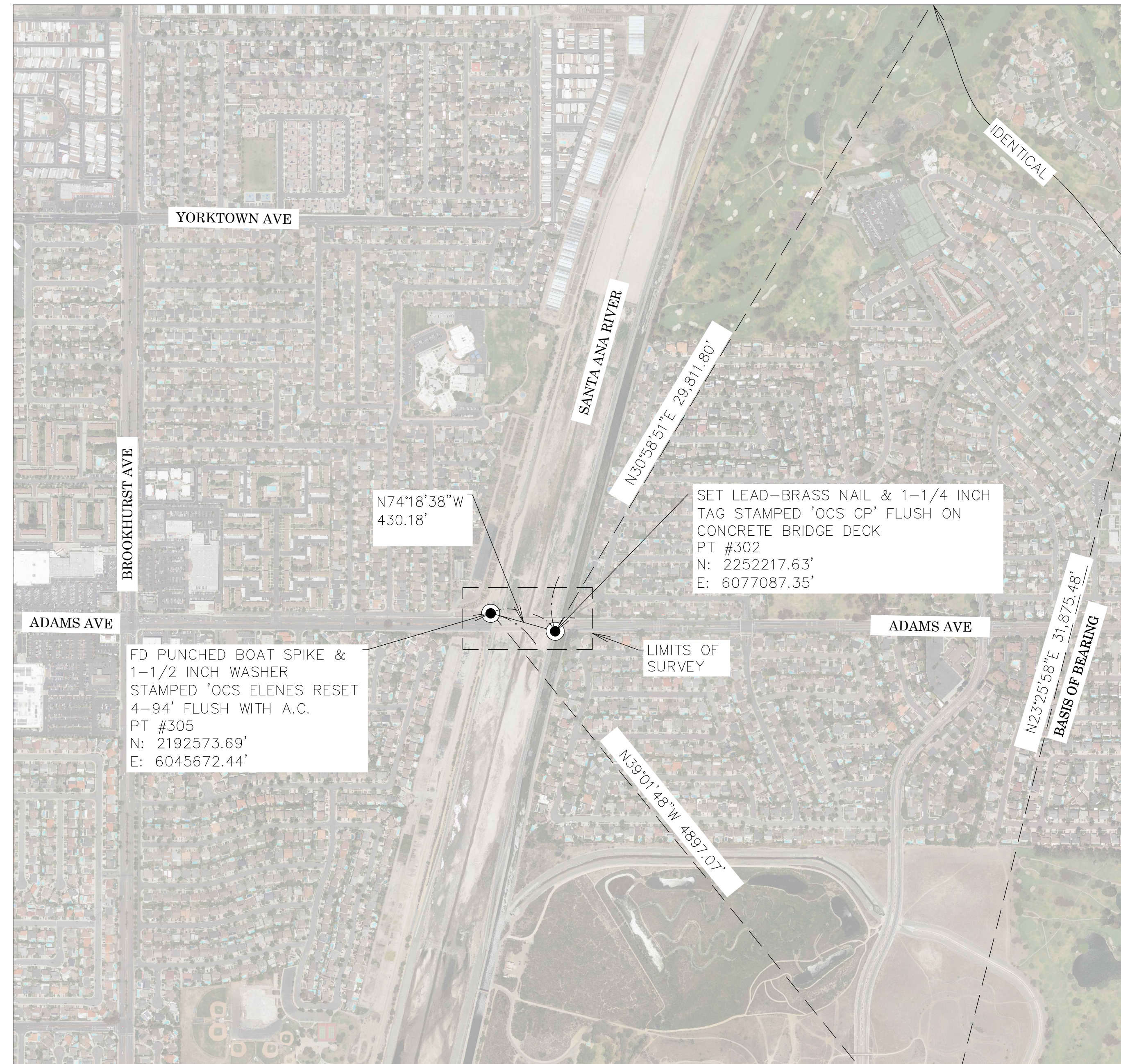
DEPUTY COUNTY SURVEYOR'S STATEMENT:

THIS MAP HAS BEEN EXAMINED IN ACCORDANCE WITH THE PROFESSIONAL LAND SURVEYOR'S ACT; THIS 27TH DAY OF APRIL, 2020.

WADE WEAVER, PLS. DEPUTY COUNTY SURVEYOR



N.T.S.



TOPOGRAPHIC MAPPING PROJECT

FOUND CGPS "SACY"
N: 2218016.19'
E: 6061432.27'
THIS IS A CONTINUOUS GPS STATION (CGPS) AND IS PART OF THE CALIFORNIA SPATIAL PREFERENCE NETWORK (CSRN), FROM WHICH DATA CAN BE DOWNLOADED HERE: [HTTP://SOPACCSRC.UCSD.EDU/](http://SOPACCSRC.UCSD.EDU/).

BASIS OF BEARINGS

THE BASIS OF BEARINGS FOR THIS SURVEY IS BASED ON THE CALIFORNIA COORDINATE SYSTEM (CCS83), ZONE VI, NAD 83, OCS (2017.50) EPOCH ADJUSTMENT, AS DETERMINED LOCALLY BY A LINE BETWEEN CONTINUOUS GLOBAL POSITIONING STATIONS CGPS (FVPK) AND (SACY) BEING NORTH 23°25'58" EAST AS DERIVED FROM THE COORDINATES PUBLISHED BY THE CALIFORNIA SPATIAL REFERENCE CENTER (CSRC) ALONG WITH DATA SHEETS ON FILE IN THE OFFICE OF THE ORANGE COUNTY SURVEYOR.

HORIZONTAL DATUM

COORDINATES SHOWN ARE BASED ON THE CALIFORNIA COORDINATE SYSTEM (CCS83), ZONE VI, NAD 83, OCS 2017.50 EPOCH ADJUSTMENT.
ALL DISTANCES SHOWN ARE GRID, UNLESS OTHERWISE NOTED. TO OBTAIN GROUND DISTANCES MULTIPLY GRID BY 1.00002490.
ALL DISTANCES ARE BASED ON THE U.S. SURVEY FOOT.
THE COMBINATION FACTOR SHOWN HEREON WAS HELD AT POINT #305 N:2192573.70', E:6045672.44', ELEVATION= 34.33'

VERTICAL DATUM

O.C.S. BM. HB-178-71 ELEV. = 11.866' YEAR LEVELED: 2005
NAVD 1988 (O.C.S. 1995 ADJUSTMENT)
DESCRIPTION: FOUND 3 3/4" OCS ALUMINUM BENCHMARK DISK STAMPED "HB-178-71," SET IN THE NORTHEAST CORNER OF A 4 FT. BY 6 FT. CONCRETE CATCH BASIN. MONUMENT IS LOCATED ALONG THE SOUTHERLY SIDE OF ADAMS AVENUE, 0.1 MILE WESTERLY OF THE CENTERLINE OF BROOKHURST STREET AND 51 FT. SOUTHERLY OF THE CENTERLINE OF ADAMS AVENUE, 57 FT. EASTERLY OF A PRIVATE DRIVE. MONUMENT IS SET LEVEL WITH THE SIDEWALK.

NOTES

THE SURVEY INFORMATION SHOWN HEREON IS TO BE USED FOR TOPOGRAPHIC RELATIONSHIPS ONLY AND IS NOT INTENDED FOR LAND ACQUISITION OR BOUNDARY PURPOSES. PARCELS SHOWN WITHOUT BEARING AND DISTANCES ARE FOR GRAPHICAL PURPOSES.

SHEET INDEX

SHEET	NO.	DESCRIPTION
SHEET 1	1	TITLE SHEET
SHEET 2	2	BOUNDARY MAP
SHEETS 3	3	TOPOGRAPHIC MAP

PURPOSE OF SURVEY

THE PURPOSE OF THIS PROJECT IS TO DETERMINE THE RELATIONSHIP BETWEEN THE NORTHERLY & SOUTHERLY RIGHT OF WAY OF ADAMS AVE AND THE ADAMS AVE BRIDGE OVER THE SANTA ANA RIVER.

HYPERLINK

REFERENCE DOCUMENTS IN THE REFERENCE LEGEND ARE LIVE HYPERLINKS TO SAID DOCUMENT. MONUMENT SYMBOLS CONTAIN LIVE HYPERLINKS TO IMAGES, IF THEY EXIST, OF RESPECTIVE MONUMENT.

FOUND CGPS "FVPK"
N: 2188769.57'
E: 6048756.26'
THIS IS A CONTINUOUS GPS STATION (CGPS) AND IS PART OF THE CALIFORNIA SPATIAL PREFERENCE NETWORK (CSRN), FROM WHICH DATA CAN BE DOWNLOADED HERE: [HTTP://SOPACCSRC.UCSD.EDU/](http://SOPACCSRC.UCSD.EDU/).

			COUNTY OF ORANGE OC PUBLIC WORKS OC SURVEY/FIELD SERVICES/BOUNDARY ANALYSIS & MAPPING		
			ADAMS AVENUE BRIDGE OVER S.A.R. TITLE SHEET		
			PROJECT LIMITS: ENTIRE SPAN OF THE ADAMS BRIDGE OVER THE SANTA ANA RIVER		
			DATE OF SURVEY: APRIL 07, 2020	BY: R. MACIAS, PLS & PARTY	SHEET NO. 1 of 3
			TOPOGRAPHIC MAPPING	BY: K. AHMED	
			OFFICE CHECK	BY: E. MEDINA, PLS.	
			FIELD CHECK	BY: R. MACIAS, PLS & PARTY	
			SCALE: N.T.S.	W.O. #E020580	
REVISIONS			FILE NO. 1920PW-IN0021		
			BULF., ADAMS AVE BRIDGE OVER S.A.R.		
			T180, 2020.DWG		

REFERENCES

- (R1) = RECORD OF SURVEY, RSB 121/23–28
(R2) = TRACT MAP NO.5492, M.M. 238/43–44
(R3) = RECORD OF SURVEY, RSB 159/28–38
(R4) = TRACT MAP NO.4349, M.M. 154/32–34
(R5) = TRACT MAP NO.5033, M.M. 209/46–47
(R6) = RECORD OF SURVEY, RSB 154/36–47

MONUMENT NOTES

- [1] FOUND WELL MONUMENT WITH A 2 INCH IRON PIPE, BRASS NAIL & 3/4 INCH TAG (NO STAMP) SECURED IN A CONCRETE PLUG DN. 1.30'. WELL LID IS TRIANGULAR STAMPED "WATER". ACCEPTED AS THE CENTERLINE INTERSECTION OF ADAMS AVENUE & BROOKHURST STREET PER (R1). HELD AS S.W. COR. NW 1/4, SEC.17,T.6S.,R.10W.
- [2] FOUND 2 INCH PUNCHED BRASS DISK DN. 1.30' IN CITY OF COSTA MESA WELL MONUMENT HAND HOLE. ACCEPTED AS THE CENTERLINE INTERSECTION OF MESA VERDE AVENUE & ADAMS AVENUE PER (R1). HELD AS THE N.E. CORNER OF SECTION 8–6–10 PER (R2).
- [3] FOUND LEAD, BRASS NAIL, & 3/4 INCH TAG (NO STAMP). THE 3/4 INCH TAG IS SECURING A 1–1/2 INCH BRASS TAG STAMPED 'OCS' FLUSH ON CONCRETE MEDIAN ISLAND. S00°23'20"W 0.07' MEASURED PERPENDICULAR FROM ESTABLISHMENT NOTE (A) PER (R1).
- [4] FOUND 2 INCH PUNCHED BRASS DISK DN. 1.50' IN CITY OF COSTA MESA WELL MONUMENT HAND HOLE. ACCEPTED AS A POINT ON THE CENTERLINE OF ADAMS AVENUE PER (R1). DID NOT ESTABLISH POSITION RELATIVE TO SHANTAR DRIVE.

NOTES

STREET R/W SHOWN IN BOLD ESTABLISHED BY SURVEY.
THE LOT LINES ARE FOR GRAPHICAL PRESENTATION ONLY.

BASIS OF BEARINGS

THE BASIS OF BEARINGS SHOWN HEREON ARE BASED ON THE CGPS STATIONS "FVPK" AND "SACY" HAVING A BEARING OF NORTH 23°25'58" EAST.

HORIZONTAL DATUM

COORDINATES SHOWN ARE BASED ON THE CALIFORNIA COORDINATE SYSTEM (CCS83), ZONE VI, NAD 83, OCS (2017.50) EPOCH ADJUSTMENT.

ALL DISTANCES SHOWN ARE GRID, UNLESS OTHERWISE NOTED. TO OBTAIN GROUND DISTANCE MULTIPLY A GRID DISTANCE BY 1.00002490.

COMBINATION FACTOR WAS HELD AT POINT # 305, AS SHOWN ON SHEET 1. N: 2192573.69', E: 6045672.44', ELEVATION= 34.33'

RECORD DISTANCES SHOWN HEREON ARE AS THEY APPEAR ON THE DOCUMENT OF RECORD. DISTANCES MAY BE EITHER GRID OR GROUND, AS PER SAID RECORD.

ALL DISTANCES ARE BASED ON THE U.S. SURVEY FOOT.

BROOKHURST STREET

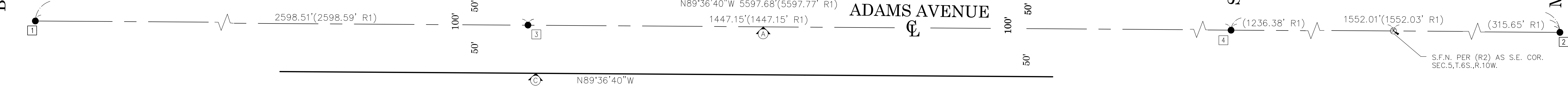
SANTA ANA RIVER (E01)

TRACT MAP
NO.4349
M.M 32-34

ADAMS AVENUE

SHANTAR DRIVE

MESA VERDE DRIVE

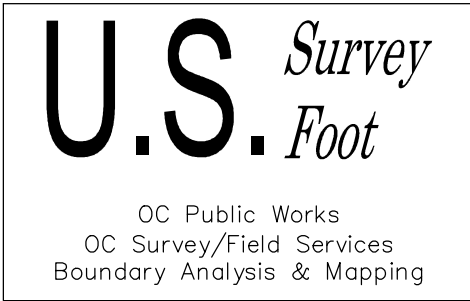
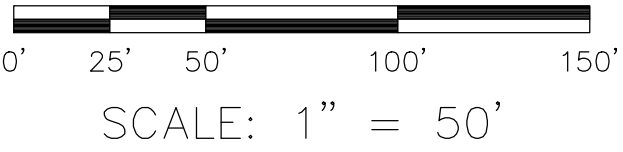


ESTABLISHMENT NOTES

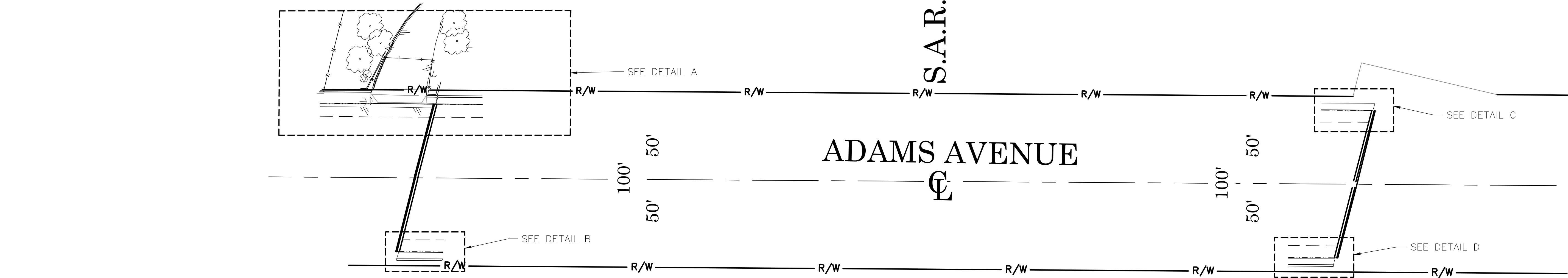
- (A) ESTABLISHED THE CENTERLINE OF ADAMS AVENUE BY HOLDING MONUMENTS [1] AND [2] PER R1.
- (B) ESTABLISHED A PORTION OF THE N'LY R/W OF ADAMS AVENUE PARALLEL AND 50' PERPENDICULAR FROM ESTABLISHMENT NOTE (A) PER (R3 & R4).
- (C) ESTABLISHED A PORTION OF THE S'LY R/W OF ADAMS AVENUE PARALLEL AND 50' PERPENDICULAR FROM ESTABLISHMENT NOTE (A) PER (R6).

LEGEND

- FOUND MONUMENT AS NOTED
- ⊗ SEARCHED, FOUND NOTHING S.F.N.

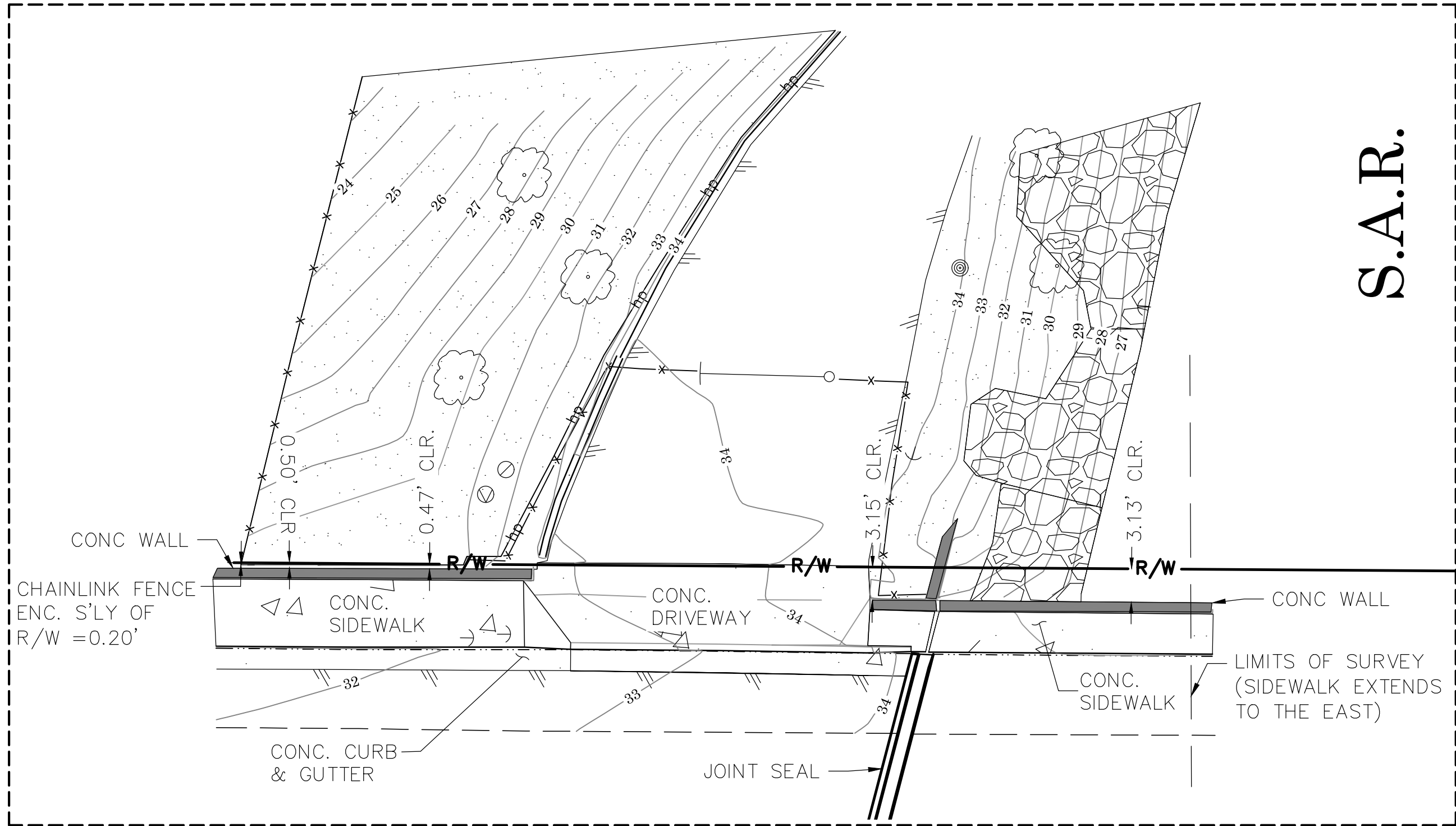


			COUNTY OF ORANGE OC PUBLIC WORKS/ENGINEERING SERVICES OC SURVEY/FIELD SERVICES/BOUNDARY ANALYSIS & MAPPING			
			ADAMS AVE BRIDGE OVER S.A.R. BOUNDARY MAP			
			PROJECT LIMITS: ENTIRE SPAN OF THE ADAMS BRIDGE OVER THE SANTA ANA RIVER AND GREENVILLE--BANNING CHANNEL.			
			DATE OF SURVEY: 04/07/2020		BY: R. MACIAS PLS	
			TOPOGRAPHIC MAPPING		BY: K. AHMED	
			OFFICE CHECK		BY: E. MEDINA PLS	
MARK	DATE	ITEM	FIELD CHECK		BY: R. MACIAS	
			SCALE: 1"=50'		W.O. #E020580	
			FILE: ADAMS AVE BRIDGE OVER S.A.R._BOUNDARY_2020.DWG		FILE #1920PW--IN0021	
		REVISIONS				



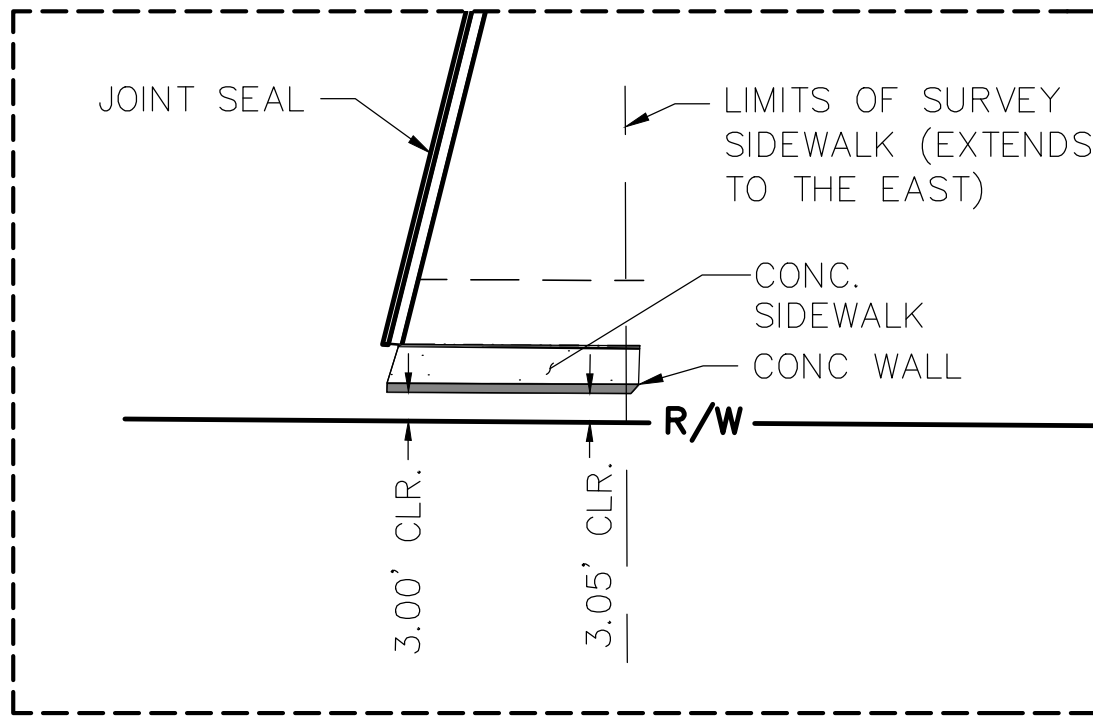
OVERALL

SCALE: 1"=50'



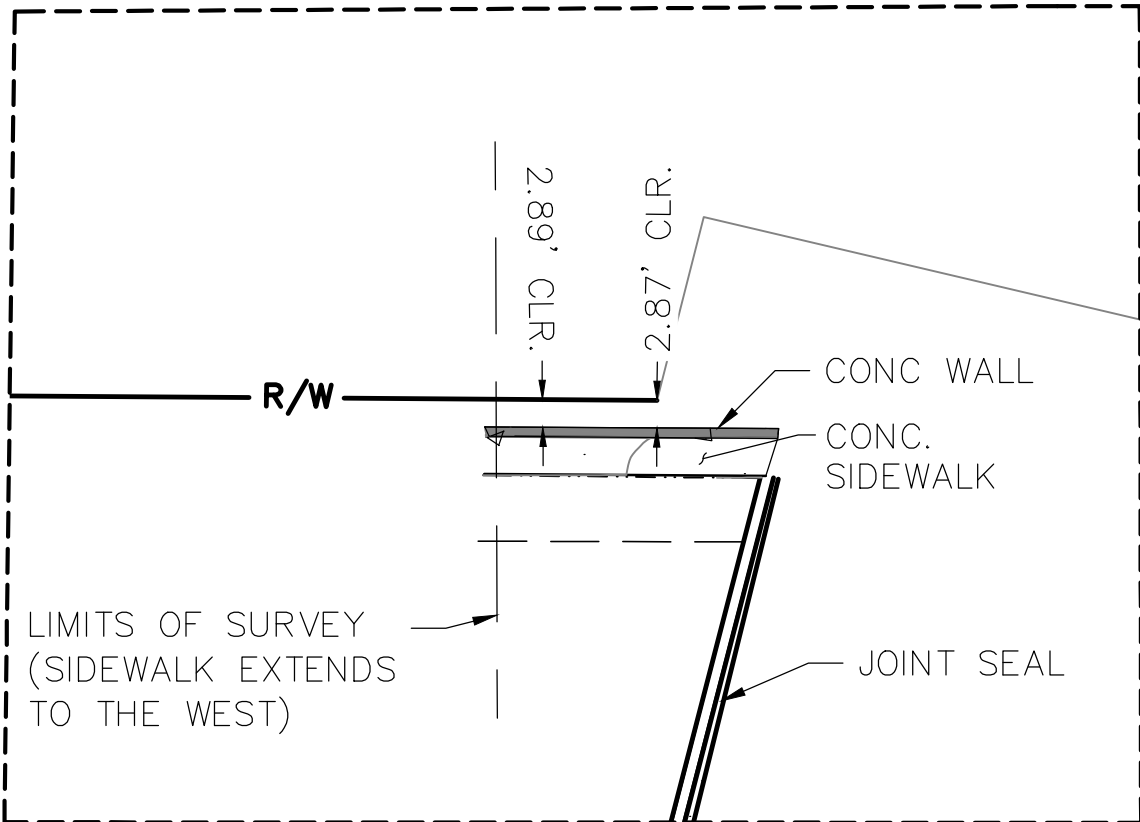
DETAIL A

SCALE: 1"=20'



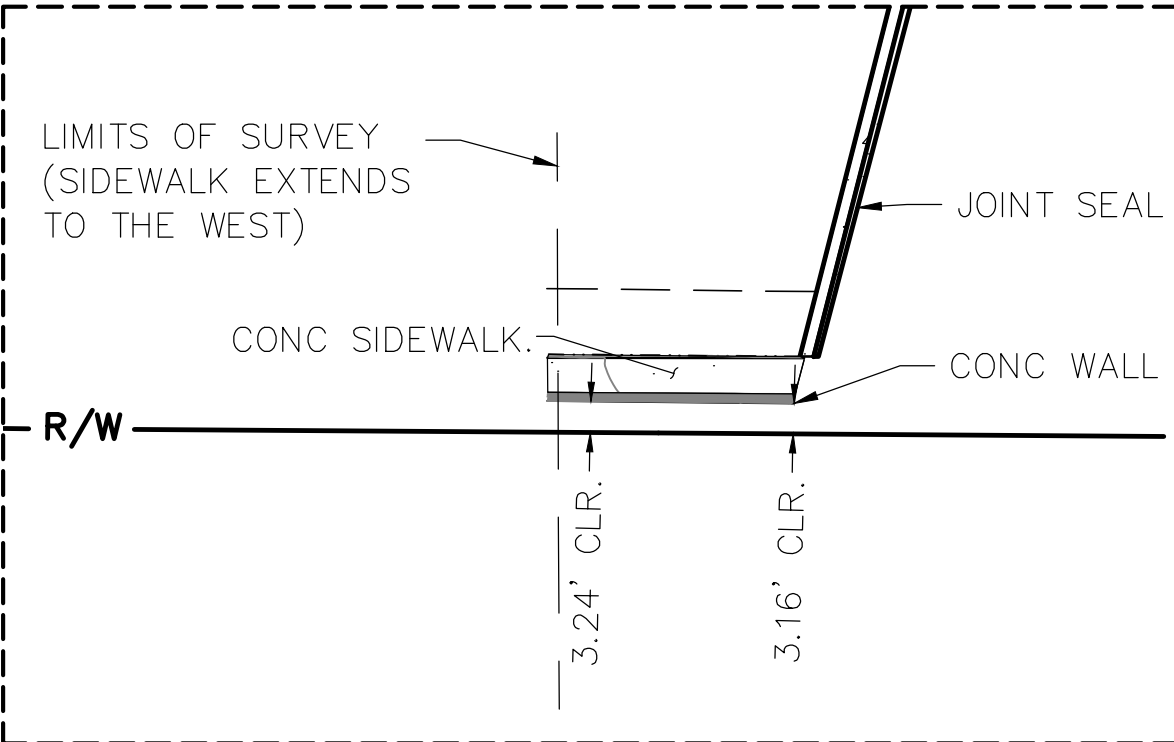
DETAIL B

SCALE: 1"=20'



DETAIL C

SCALE: 1"=20'



DETAIL D

SCALE: 1"=20'

SYMBOL PATTERN KEY

- Tree Undefined
- Vent Pipe
- Single Gate
- Guy Wire
- Powerpole- Wood
- Powerpole
- Pull Box- Unknown
- Vault-Unknown
- Valve

AREA PATTERN KEY

- Concrete
- Dirt
- Gravel / Rip Rap

LINE PATTERN KEY

- Edge of Asphalt Pavement
- Edge of Concrete Pavement
- Fence-Chainlink
- Flowline
- Street Centerline
- Street R/W
- Stripping
- Concrete Wall

CLR.=Clearance
CONC=Concrete
S.A.R.=Santa Ana River
ENC.=Encroachment

U.S. Survey
Foot

OC Public Works
OC Survey/Field Services
Boundary Analysis & Mapping

CONTOUR INTERVAL =1"

		COUNTY OF ORANGE OC PUBLIC WORKS OC SURVEY/FIELD SERVICES/BOUNDARY ANALYSIS & MAPPING			
		ADAMS AVE BRIDGE OVER S.A.R. TOPOGRAPHIC MAP			
		PROJECT LIMITS: ENTIRE SPAN OF THE ADAMS BRIDGE OVER THE SANTA ANA RIVER			
		DATE OF SURVEY: 04/07/2020		BY: R. MACIAS, PLS & PARTY	
		TOPOGRAPHIC MAPPING		BY: K. AHMED	
		OFFICE CHECK		BY: E. MEDINA, PLS.	
		FIELD CHECK		BY: R. MACIAS, PLS & PARTY	
		SCALE: 1" = 20'		W.O. #E020580	
				FILE NO. 1920PW-IN0021	
		FILE: ADAMS AVE BRIDGE OVER S.A.R._TOPO_2020.DWG			
MARK	DATE	ITEM	REVISIONS		