



# OC PUBLIC WORKS DEPARTMENT

KHALID BAZMI, P.E., DIRECTOR

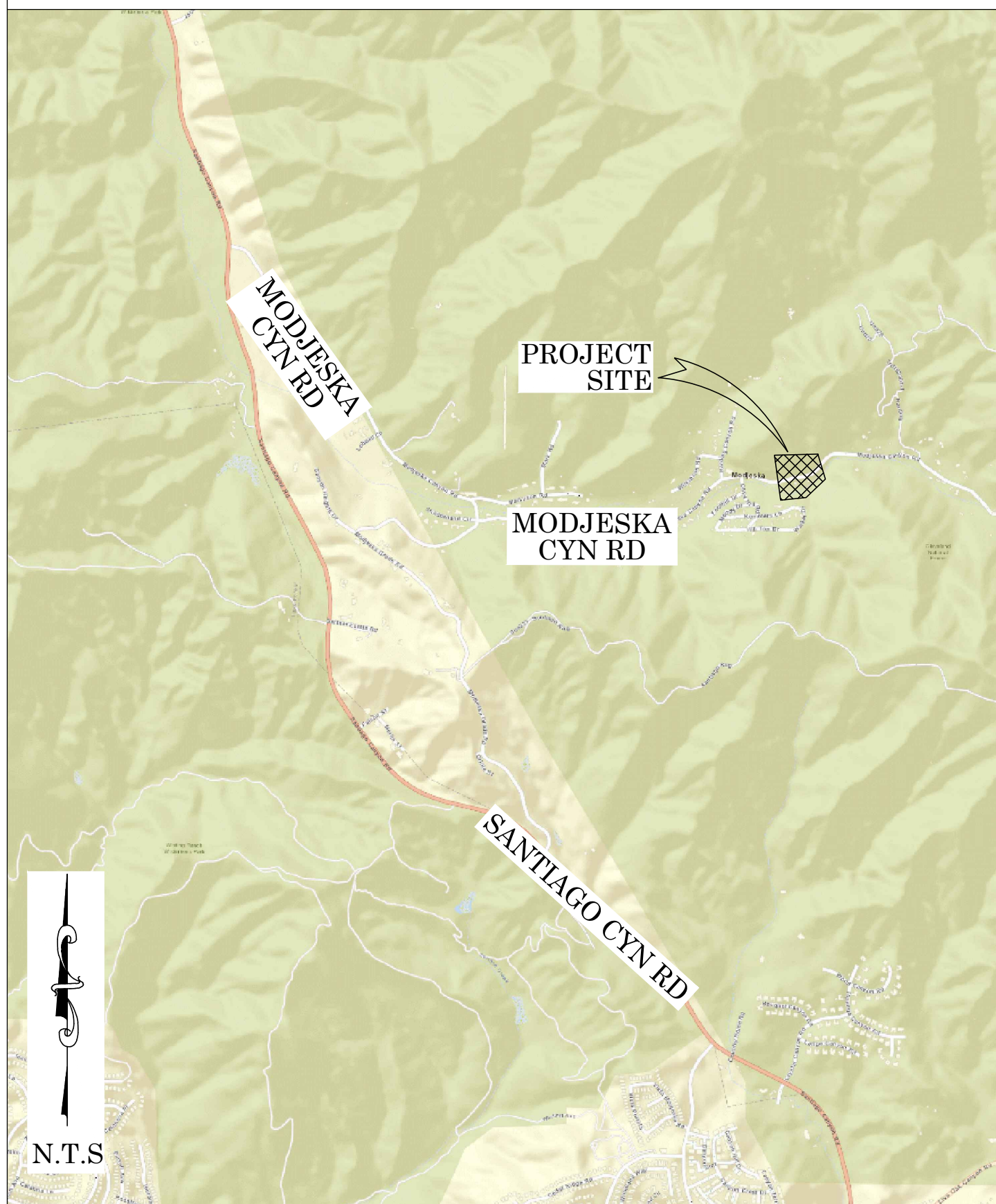
KEVIN HILLS, P.L.S., COUNTY SURVEYOR

29122 MODJESKA CANYON ROAD

## DRAINAGE IMPROVEMENTS



### LOCATION MAP



#### SENIOR LAND SURVEYOR'S CERTIFICATE:

THIS MAP CORRECTLY REPRESENTS A SURVEY MADE BY ME OR UNDER MY DIRECTION IN CONFORMANCE WITH REQUIREMENTS OF THE PROFESSIONAL LAND SURVEYOR'S ACT; THIS 10 DAY OF JUNE, 2020.

ELLIOTT MEDINA, PLS. SENIOR LAND SURVEYOR



#### DEPUTY COUNTY SURVEYOR'S STATEMENT:

THIS MAP HAS BEEN EXAMINED IN ACCORDANCE WITH THE PROFESSIONAL LAND SURVEYOR'S ACT; THIS 10 DAY OF JUNE, 2020.

WADE WEAVER, PLS. DEPUTY COUNTY SURVEYOR



**U.S. Survey**  
*Foot*

OC Public Works  
OC Survey/Field Services  
Boundary Analysis & Mapping

FOUND CGPS "WHYT"  
N: 2191882.25'  
E: 6137734.82'

THIS IS A CONTINUOUS GPS STATION (CGPS) AND IS PART OF THE CALIFORNIA SPATIAL PREFERENCE NETWORK (CSRN), FROM WHICH DATA CAN BE DOWNLOADED HERE: [HTTP://SOPACCSRC.UCSD.EDU/](http://SOPACCSRC.UCSD.EDU/).



## TOPOGRAPHIC MAPPING PROJECT

### BASIS OF BEARINGS

THE BASIS OF BEARINGS FOR THIS SURVEY IS BASED ON THE CALIFORNIA COORDINATE SYSTEM (CCS83), ZONE VI, NAD 83, OCS (2017.50) EPOCH ADJUSTMENT, AS DETERMINED LOCALLY BY A LINE BETWEEN CONTINUOUS GLOBAL POSITIONING STATIONS CGPS (WHYT) AND (OEOC) BEING NORTH 41°50'42" WEST AS DERIVED FROM THE COORDINATES PUBLISHED BY THE CALIFORNIA SPATIAL REFERENCE CENTER (CSRC) ALONG WITH DATA SHEETS ON FILE IN THE OFFICE OF THE ORANGE COUNTY SURVEYOR.

### HORIZONTAL DATUM

COORDINATES SHOWN ARE BASED ON THE CALIFORNIA COORDINATE SYSTEM (CCS83), ZONE VI, NAD 83, OCS (2017.50) EPOCH ADJUSTMENT.

ALL DISTANCES SHOWN ARE GRID, UNLESS OTHERWISE NOTED. TO OBTAIN GROUND DISTANCES MULTIPLY GRID BY A COMBINATION FACTOR OF 1.00008481.

THIS COMBINATION FACTOR WAS DERIVED AT POINT #309  
N: 2204610.05', E: 6144025.64', EL: 1370.22'

ALL DISTANCES ARE BASED ON THE U.S. SURVEY FOOT.

### VERTICAL DATUM

O.C.S. BM. 1UU-3-89 ELEV. = 1337.157' YEAR LEVELED: 1989

NAVD 1988 (O.C.S. 1995 ADJUSTMENT)

DESCRIPTION: FOUND 3 3/4" OCS ALUMINUM BENCHMARK DISK STAMPED "3UU-2-89", SET IN THE TOP OF A CONCRETE BRIDGE RETAINING WALL. MONUMENT IS LOCATED IN THE SOUTHWESTERLY CORNER OF THE INTERSECTION OF MODJESKA CANYON ROAD AND OLIVE HILL ROAD, 44 FT. SOUTHEASTERLY OF THE CENTERLINE OF MODJESKA CANYON ROAD AND 8 FT. NORTHWESTERLY OF THE CENTERLINE OF OLIVE HILL ROAD MONUMENT IS SET LEVEL WITH THE ROAD.

### NOTES

THE SURVEY INFORMATION SHOWN HEREON IS TO BE USED FOR TOPOGRAPHIC RELATIONSHIPS ONLY AND IS NOT INTENDED FOR LAND ACQUISITION OR BOUNDARY PURPOSES. PARCELS SHOWN WITHOUT BEARING AND DISTANCES ARE FOR GRAPHICAL PURPOSES AND ARE PENDING RECEIPT OF TITLE REPORT.

### SHEET INDEX

SHEET	NO.	DESCRIPTION
SHEET	1	TITLE SHEET
SHEETS	2	BOUNDARY (PRELIMINARY)
SHEETS	3-4	TOPOGRAPHIC MAP

### PURPOSE OF SURVEY

THE PURPOSE OF THE SURVEY IS TO PROVIDE A TOPOGRAPHIC MAP AND RIGHT OF WAY ESTABLISHMENT FOR THIS PORTION OF MODJESKA CYN RD AT 29122 MODJESKA CYN RD.

COUNTY OF ORANGE OC PUBLIC WORKS OC SURVEY/FIELD SERVICES/BOUNDARY ANALYSIS & MAPPING			
29122 MODJESKA CANYON ROAD DRAINAGE IMPROVEMENTS			
TOPOGRAPHIC MAP			
PROJECT LIMITS: A PORTION OF 29122 MODJESKA CYN RD APN 105-262-57			
DATE OF SURVEY: 03/19/2020		BY: R. MACIAS, PLS & CREW	
TOPOGRAPHIC MAPPING		BY: S. STROM & A. VU	
OFFICE CHECK		BY: E. MEDINA, PLS	
FIELD CHECK		BY: R. MACIAS, PLS	
SCALE: N.T.S.		W.O. #ER20505	FILE #1920PW-DS0001
REVISIONS		FILE: MODJESKA CYN RD_TOPO 2020.DWG	

SHEET NO.  
1  
of  
4



ESTABLISHMENT NOTES

- Ⓐ ESTABLISHED A PORTION OF MODJESKA CANYON RD. BY HOLDING MONUMENTS 1 & 2 PER (R1).
- Ⓑ SEARCHED FOUND NOTHING, ACCEPTED AS A P.I. ON MODJESKA CANYON RD. ESTABLISHED BY HOLDING RECORD DISTANCE FROM MONUMENT 2 AND THE E'LY PROD OF THE LINE ESTABLISHED FROM MONUMENTS 1 & 2 PER (R1).
- Ⓒ ESTABLISHED A PORTION OF THE CENTER LINE OF MODJESKA CANYON RD. BY HOLDING ESTABLISHMENT NOTE Ⓑ AND MONUMENT 3 PER (R1).
- Ⓓ SEARCHED FOUND NOTHING, ACCEPTED AT AN E.C. OF MODJESKA CANYON RD. ESTABLISHED BY HOLDING THE RECORD CHORD OF 143.31' FROM MONUMENT 2 AND ESTABLISHMENT NOTE Ⓒ PER (R1).
- Ⓔ ESTABLISHED A PORTION OF THE CENTER LINE OF MODJESKA CANYON RD. BY THE CURVE, DEFINED BY HOLDING MONUMENT 2 AND ESTABLISHMENT NOTE Ⓓ, AND TANGENCY OF ESTABLISHMENT NOTE Ⓒ PER (R1).
- Ⓕ ESTABLISHED A PORTION OF THE CENTER LINE OF MODJESKA CANYON RD. BY HOLDING MONUMENTS 3 & 4 PER (R4).
- Ⓖ ESTABLISHED A PORTION OF THE CENTER LINE MODJESKA CANYON RD. BY HOLDING RECORD RADIUS 398.33' AND TANGENCY BETWEEN ESTABLISHMENT NOTES Ⓓ & Ⓕ PER (R3).
- Ⓗ ESTABLISHED A PORTION OF THE CENTERLINE OF MODJESKA CANYON RD. BY HOLDING MONUMENTS 4 & 5 PER (R1).
- Ⓘ ESTABLISHED A PORTION OF THE CENTERLINE OF MODJESKA CANYON RD. BY HOLDING THE RECORD RADIUS 199.77' AND THE TANGENCY OF ESTABLISHMENT NOTES Ⓕ & Ⓗ PER (R1).
- Ⓢ SEARCHED FOUND NOTHING, ESTABLISHED BY DISTANCE-DISTANCE INTERSECTION BY HOLDING RECORD DISTANCE OF 295.77' NE'LY FROM MONUMENT 5 AND RECORD DISTANCE 200.26' NW'LY FROM MONUMENT 6 PER (R1). ACCEPTED AS P.I. 6 PER (R1).

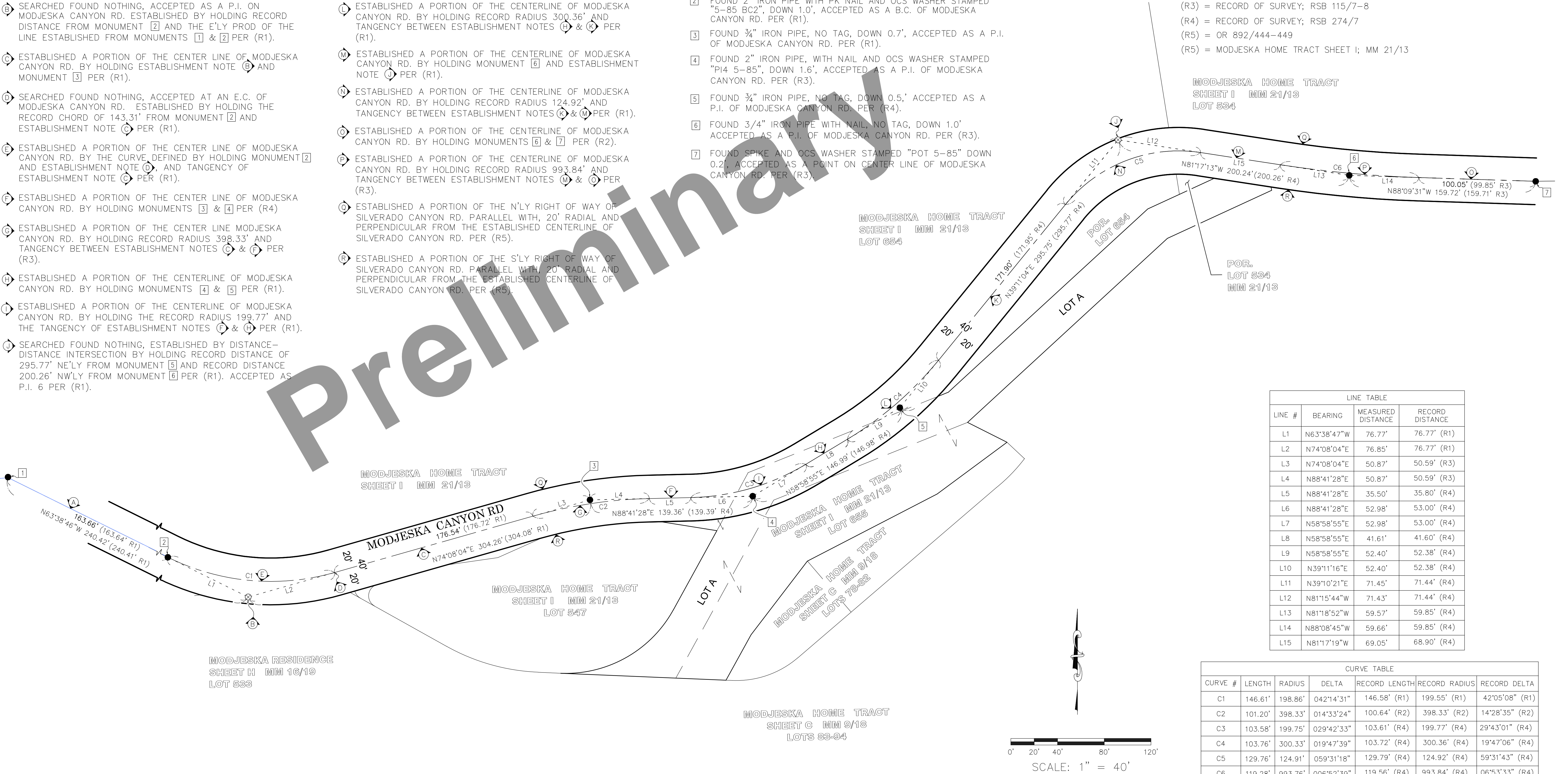
- Ⓚ ESTABLISHED A PORTION OF THE CENTERLINE OF MODJESKA CANYON RD. BY HOLDING MONUMENT 5 AND ESTABLISHMENT NOTE Ⓢ PER (R1).
- Ⓛ ESTABLISHED A PORTION OF THE CENTERLINE OF MODJESKA CANYON RD. BY HOLDING RECORD RADIUS 300.36' AND TANGENCY BETWEEN ESTABLISHMENT NOTES Ⓗ & Ⓚ PER (R1).
- Ⓜ ESTABLISHED A PORTION OF THE CENTERLINE OF MODJESKA CANYON RD. BY HOLDING MONUMENT 6 AND ESTABLISHMENT NOTE Ⓢ PER (R1).
- Ⓝ ESTABLISHED A PORTION OF THE CENTERLINE OF MODJESKA CANYON RD. BY HOLDING RECORD RADIUS 124.92' AND TANGENCY BETWEEN ESTABLISHMENT NOTES Ⓚ & Ⓜ PER (R1).
- Ⓞ ESTABLISHED A PORTION OF THE CENTERLINE OF MODJESKA CANYON RD. BY HOLDING MONUMENTS 6 & 7 PER (R2).
- Ⓟ ESTABLISHED A PORTION OF THE CENTERLINE OF MODJESKA CANYON RD. BY HOLDING RECORD RADIUS 993.84' AND TANGENCY BETWEEN ESTABLISHMENT NOTES Ⓜ & Ⓞ PER (R3).
- Ⓠ ESTABLISHED A PORTION OF THE N'LY RIGHT OF WAY OF SILVERADO CANYON RD. PARALLEL WITH, 20' RADIAL AND PERPENDICULAR FROM THE ESTABLISHED CENTERLINE OF SILVERADO CANYON RD. PER (R5).
- Ⓡ ESTABLISHED A PORTION OF THE S'LY RIGHT OF WAY OF SILVERADO CANYON RD. PARALLEL WITH, 20' RADIAL AND PERPENDICULAR FROM THE ESTABLISHED CENTERLINE OF SILVERADO CANYON RD. PER (R5).

MONUMENT NOTES

- 1 FOUND 2" IRON PIPE WITH BROKEN OCS TAG, DOWN 0.3', ACCEPTED AS A P.I. OF MODJESKA CANYON RD. PER (R1).
- 2 FOUND 2" IRON PIPE WITH PK NAIL AND OCS WASHER STAMPED "5-85 BC2", DOWN 1.0', ACCEPTED AS A B.C. OF MODJESKA CANYON RD. PER (R1).
- 3 FOUND ¾" IRON PIPE, NO TAG, DOWN 0.7', ACCEPTED AS A P.I. OF MODJESKA CANYON RD. PER (R1).
- 4 FOUND 2" IRON PIPE, WITH NAIL AND OCS WASHER STAMPED "PI4 5-85", DOWN 1.6', ACCEPTED AS A P.I. OF MODJESKA CANYON RD. PER (R3).
- 5 FOUND ¾" IRON PIPE, NO TAG, DOWN 0.5', ACCEPTED AS A P.I. OF MODJESKA CANYON RD. PER (R4).
- 6 FOUND 3/4" IRON PIPE WITH NAIL, NO TAG, DOWN 1.0' ACCEPTED AS A P.I. OF MODJESKA CANYON RD. PER (R3).
- 7 FOUND SPIKE AND OCS WASHER STAMPED "POT 5-85" DOWN 0.2', ACCEPTED AS A POINT ON CENTER LINE OF MODJESKA CANYON RD. PER (R3).

REFERENCES

- (R1) = RECORD OF SURVEY; RSB 115/3-4
- (R2) = RECORD OF SURVEY; RSB 115/5-6
- (R3) = RECORD OF SURVEY; RSB 115/7-8
- (R4) = RECORD OF SURVEY; RSB 274/7
- (R5) = OR 892/444-449
- (R5) = MODJESKA HOME TRACT SHEET I; MM 21/13



LINE TABLE			
LINE #	BEARING	MEASURED DISTANCE	RECORD DISTANCE
L1	N63°38'47"W	76.77'	76.77' (R1)
L2	N74°08'04"E	76.85'	76.77' (R1)
L3	N74°08'04"E	50.87'	50.59' (R3)
L4	N88°41'28"E	50.87'	50.59' (R3)
L5	N88°41'28"E	35.50'	35.80' (R4)
L6	N88°41'28"E	52.98'	53.00' (R4)
L7	N58°58'55"E	52.98'	53.00' (R4)
L8	N58°58'55"E	41.61'	41.60' (R4)
L9	N58°58'55"E	52.40'	52.38' (R4)
L10	N39°11'16"E	52.40'	52.38' (R4)
L11	N39°10'21"E	71.45'	71.44' (R4)
L12	N81°15'44"W	71.43'	71.44' (R4)
L13	N81°18'52"W	59.57'	59.85' (R4)
L14	N88°08'45"W	59.66'	59.85' (R4)
L15	N81°17'19"W	69.05'	68.90' (R4)

CURVE TABLE						
CURVE #	LENGTH	RADIUS	DELTA	RECORD LENGTH	RECORD RADIUS	RECORD DELTA
C1	146.61'	198.86'	042°14'31"	146.58' (R1)	199.55' (R1)	42°05'08" (R1)
C2	101.20'	398.33'	014°33'24"	100.64' (R2)	398.33' (R2)	14°28'35" (R2)
C3	103.58'	199.75'	029°42'33"	103.61' (R4)	199.77' (R4)	29°43'01" (R4)
C4	103.76'	300.33'	019°47'39"	103.72' (R4)	300.36' (R4)	19°47'06" (R4)
C5	129.76'	124.91'	059°31'18"	129.79' (R4)	124.92' (R4)	59°31'43" (R4)
C6	119.28'	993.76'	006°52'39"	119.56' (R4)	993.84' (R4)	06°53'33" (R4)

HORIZONTAL DATUM

COORDINATES SHOWN ARE BASED ON THE CALIFORNIA COORDINATE SYSTEM (CCS83), ZONE VI, NAD 83, OCS (2017.50) EPOCH ADJUSTMENT.

COMBINATION FACTOR WAS HELD BY USING THE COMBINATION FACTORS FOR MONUMENT 309. ALL DISTANCES SHOWN ARE GRID, UNLESS OTHERWISE NOTED. TO OBTAIN GROUND DISTANCE MULTIPLY A GRID DISTANCE BY 1.00008481, AS SHOWN ON SHEET 1.

RECORD DISTANCES SHOWN HEREON ARE AS THEY APPEAR ON THE DOCUMENT OF RECORD. DISTANCES MAY BE EITHER GRID OR GROUND, AS PER SAID RECORD.

ALL DISTANCES ARE BASED ON THE U.S. SURVEY FOOT.

LEGEND

- FOUND MONUMENT AS NOTED
- ⊗ SEARCHED FOUND NOTHING

NOTES

PARCEL LINES SHOWN PER COUNTY OF ORANGE LANDBASE INFORMATION SYSTEM AND ARE FOR GRAPHICAL PURPOSES ONLY.

BASIS OF BEARINGS

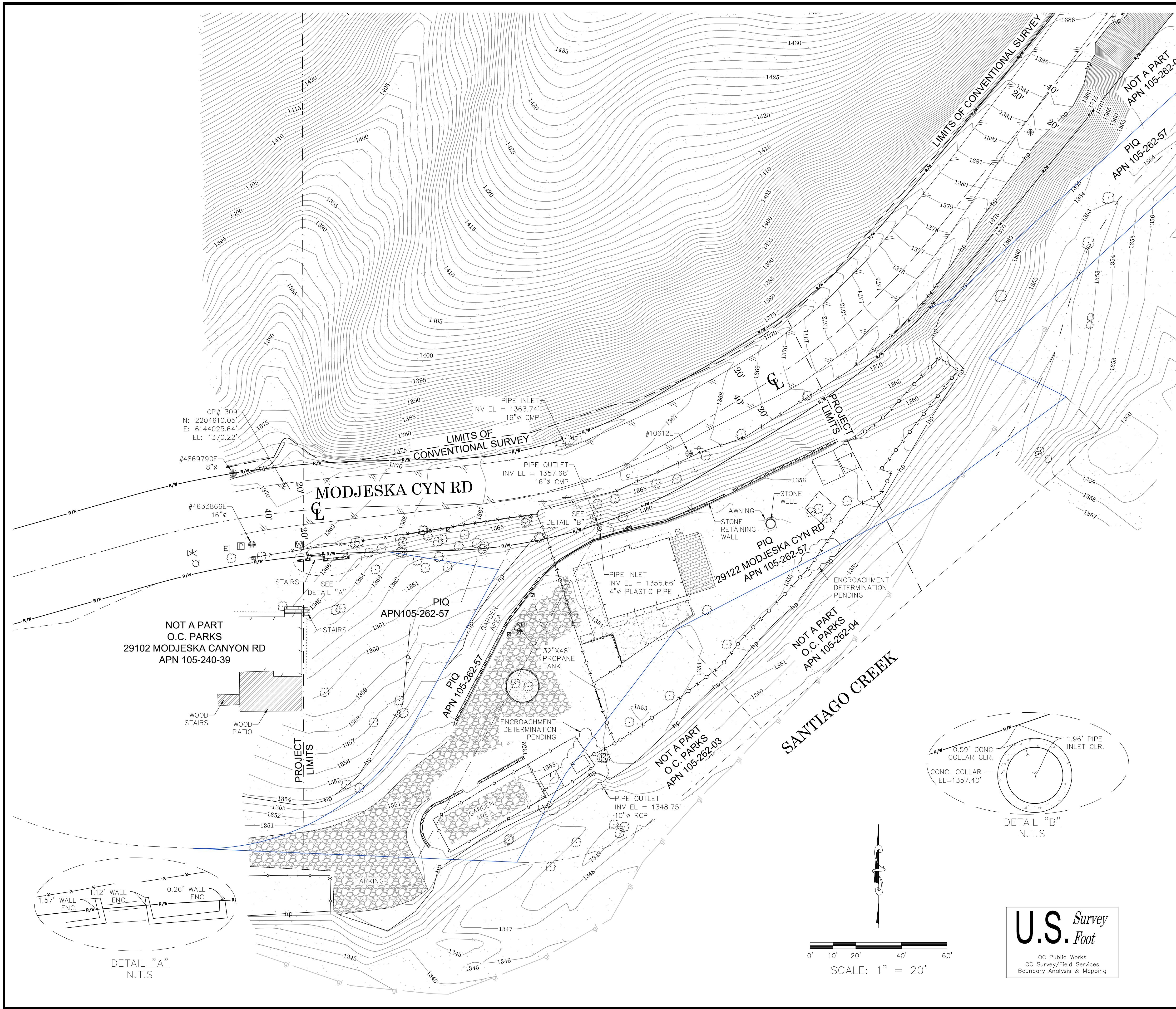
THE BASIS OF BEARINGS SHOWN HEREON ARE BASED ON THE CGPS STATIONS (WHYT) AND (MJPK) HAVING A BEARING OF NORTH 63°30'50.97" EAST.

COUNTY OF ORANGE OC PUBLIC WORKS/ENGINEERING SERVICES OC SURVEY/FIELD SERVICES/BOUNDARY ANALYSIS & MAPPING			
21922 MODJESKA CANYON RD. CENTERLINE ESTABLISHMENT			
BOUNDARY MAP			
PROJECT LIMITS: CROSS SECTION OF MODJESKA RD AT 29122 MODJESKA CYN RD			
DATE OF SURVEY: 03/19/2020		BY: R. MACIAS & PARTY	
MAPPING		BY: S. STROM	
OFFICE CHECK		BY: E. MEDINA, PLS	
FIELD CHECK		BY: R. MACIAS, PLS	
SCALE: 1"=40'		W.O. #ER20505	FILE #: 1920PW-DS0001
FILE: MODJESKA CODE ENFORCEMENT 40 SCALE_BNDRY_2020.DWG			
MARK	DATE	ITEM	
REVISIONS			
			SHEET NO. <b>2</b> of <b>4</b>

U.S. Survey  
Foot

OC Public Works  
OC Survey/Field Services  
Boundary Analysis & Mapping





### LEGEND

SYMBOL	
	Control Point
	Fire Hydrant
	Gate, Double
	Gate, Single
	Guy Wire Anchor
	Pipe Inlet/Outlet
	Post
	32" Propane Tank
	Pull Box Electrical
	Pull Box Telephone
	Sign Post
	Tree
	Utility Pole
	Utility Pole w/ 1 Light
	Valve Irrigation
	Valve Water
	Vent Pipe
	Water Vault
	Water Meter

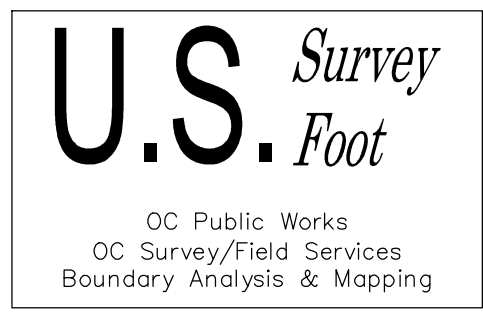
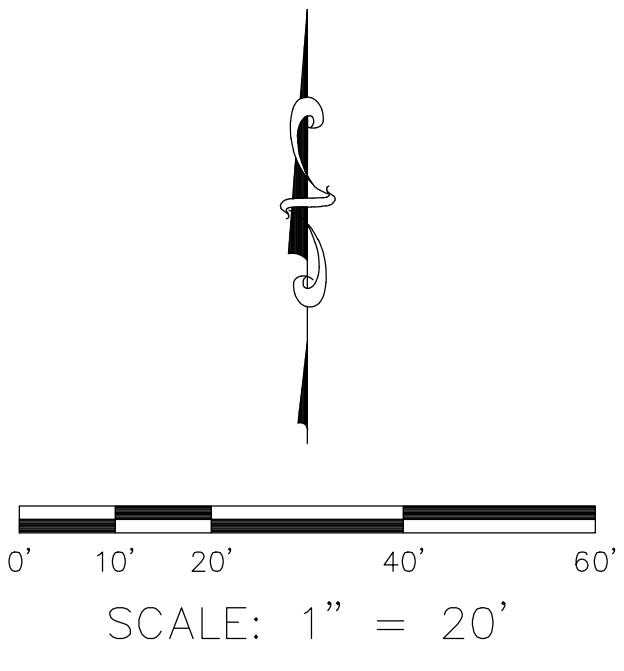
LINE PATTERN KEY	
	Block Wall
	Building Outline
	Centerline
	Edge of Asphalt Pavement
	Fence Chainlink
	Fence Plastic
	Fence Post and Wire
	Flowline
	Grade Line
	Hinge Point
	Parcel Line
	Parcel Line in Question
	Right of Way
	Roof Overhang
	Stone Retaining Wall
	Stone Wall

AREA PATTERN KEY	
	Concrete
	Brick
	Dirt
	Gravel / Rip Rap
	Wood

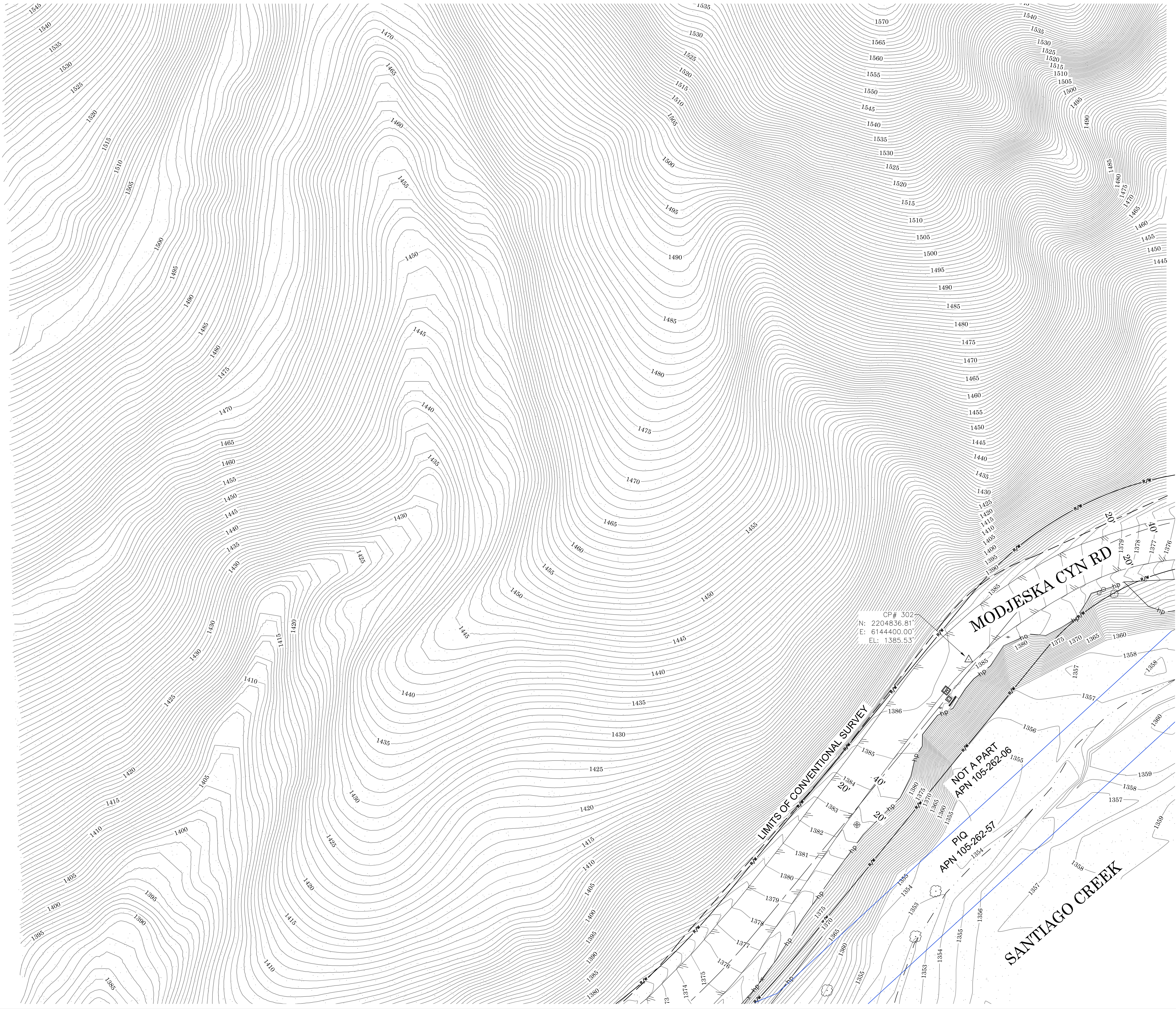
ABBREVIATION	
CLR	Clearance
CONC	Concrete
CP	Control Point
CMP	Corrugated Metal Pipe
EL	Elevation
ENC	Encroachment
INV	Invert
PIQ	Parcel in Question
RCP	Reinforced Concrete Pipe

**NOTES**  
PARCEL LINES SHOWN PER COUNTY OF ORANGE LANDBASE INFORMATION SYSTEM AND ARE FOR GRAPHICAL PURPOSES ONLY.

			COUNTY OF ORANGE OC PUBLIC WORKS OC SURVEY/FIELD SERVICES/BOUNDARY ANALYSIS & MAPPING		
			29122 MODJESKA CANYON ROAD DRAINAGE IMPROVEMENTS		
			TOPOGRAPHIC MAP		
			PROJECT LIMITS: A PORTION OF 29122 MODJESKA CYN RD APN 105-262-57		
			DATE OF SURVEY: 03/19/2020	BY: R. MACIAS, PLS & CREW	SHEET NO.  3 of 4
			TOPOGRAPHIC MAPPING	BY: S. STROM & A. VU	
			OFFICE CHECK	BY: E. MEDINA, PLS	
			FIELD CHECK	BY: R. MACIAS, PLS	
			SCALE: 1" = 20'	W.O. #ER20505 FILE #1920PW-DS0001	
			FILE: MODJESKA CYN RD_TOPO 2020.DWG		
MARK	DATE	ITEM			
REVISIONS					







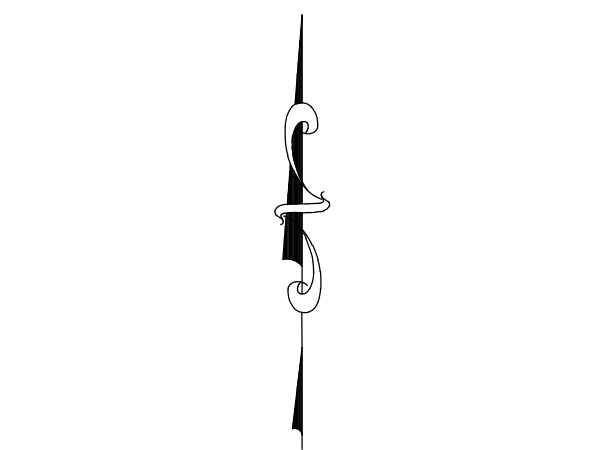
## LEGEND

SYMBOL		LINE PATTERN KEY	
	Control Point		Block Wall
	Fire Hydrant		Building Outline
	Gate, Double		Centerline
	Gate, Single		Edge of Asphalt Pavement
	Guy Wire Anchor		Fence Chainlink
	Pipe Inlet/Outlet		Fence Plastic
	Post		Fence Post and Wire
	32" Propane Tank		Flowline
	Pull Box Electrical		Grade Line
	Pull Box Telephone		Hinge Point
	Sign Post		Parcel Line
	Tree		Parcel Line in Question
	Utility Pole		Right of Way
	Utility Pole w/ 1 Light		Roof Overhang
	Valve Irrigation		Stone Retaining Wall
	Valve Water		Stone Wall
	Vent Pipe	AREA PATTERN KEY	
	Water Vault		Concrete
	Water Meter		Brick
ABBREVIATION			Dirt
CLR	Clearance		Gravel / Rip Rap
CONC	Concrete		Wood
CP	Control Point		
CMP	Corrugated Metal Pipe		
EL	Elevation		
ENC	Encroachment		
INV	Invert		
PIQ	Parcel in Question		
RCP	Reinforced Concrete Pipe		

### NOTES

PARCEL LINES SHOWN PER COUNTY OF ORANGE LANDBASE INFORMATION SYSTEM AND ARE FOR GRAPHICAL PURPOSES ONLY.

SEE SHEET 3



SCALE: 1" = 20'

**U.S. Survey**  
**Foot**

OC Public Works  
OC Survey/Field Services  
Boundary Analysis & Mapping

			COUNTY OF ORANGE OC PUBLIC WORKS OC SURVEY/FIELD SERVICES/BOUNDARY ANALYSIS & MAPPING	
			<b>29122 MODJESKA CANYON ROAD DRAINAGE IMPROVEMENTS</b>	
			TOPOGRAPHIC MAP	
			PROJECT LIMITS: A PORTION OF 29122 MODJESKA CYN RD. APN 105-262-57	
			DATE OF SURVEY: 03/19/2020	BY: R. MACIAS, PLS & CREW
			TOPOGRAPHIC MAPPING	BY: S. STROM & A. VU
			OFFICE CHECK	BY: E. MEDINA, PLS
			FIELD CHECK	BY: R. MACIAS, PLS
			SCALE: 1" = 20'	W.O. #ER20505
			FILE: #1920PW-DS0001	
			FILE: MODJESKA CYN RD_TOPO 2020.DWG	
MARK	DATE	ITEM		
REVISIONS				
			SHEET NO. <b>4</b> of <b>4</b>	