

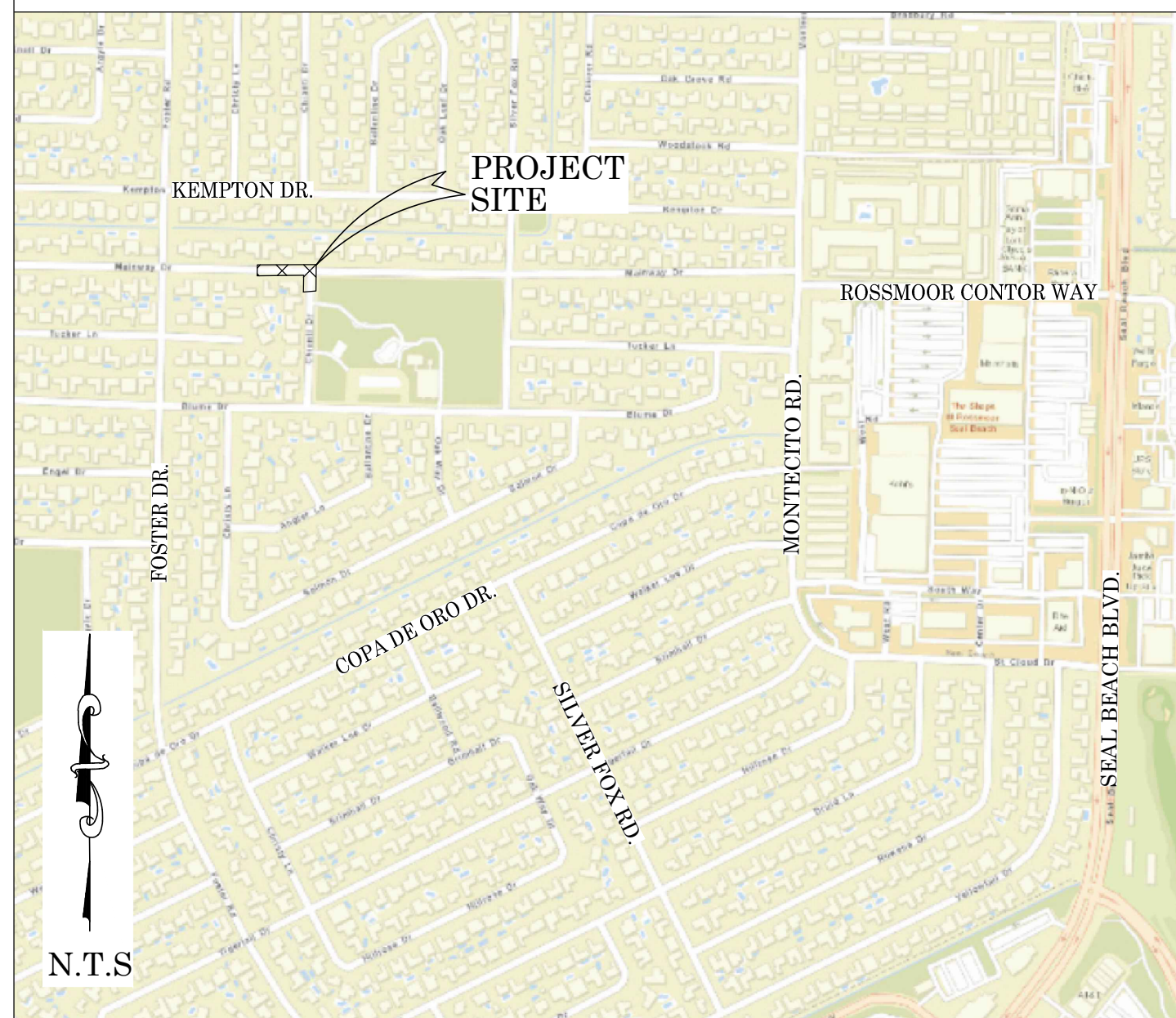


OC PUBLIC WORKS DEPARTMENT  
JAMES TREADAWAY, DIRECTOR OF PUBLIC WORKS  
KEVIN HILLS, COUNTY SURVEYOR  
ROSSMOOR - 12271 CHIANTI DR.



ROAD MAINTENANCE

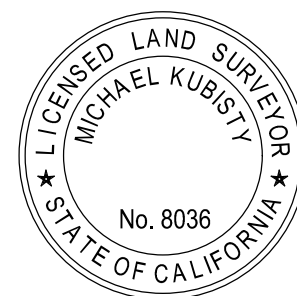
LOCATION MAP



SENIOR LAND SURVEYOR'S CERTIFICATE:

THIS MAP CORRECTLY REPRESENTS A SURVEY MADE BY ME OR UNDER MY DIRECTION IN CONFORMANCE WITH REQUIREMENTS OF THE PROFESSIONAL LAND SURVEYOR'S ACT; THIS 5 DAY OF OCTOBER, 2020.

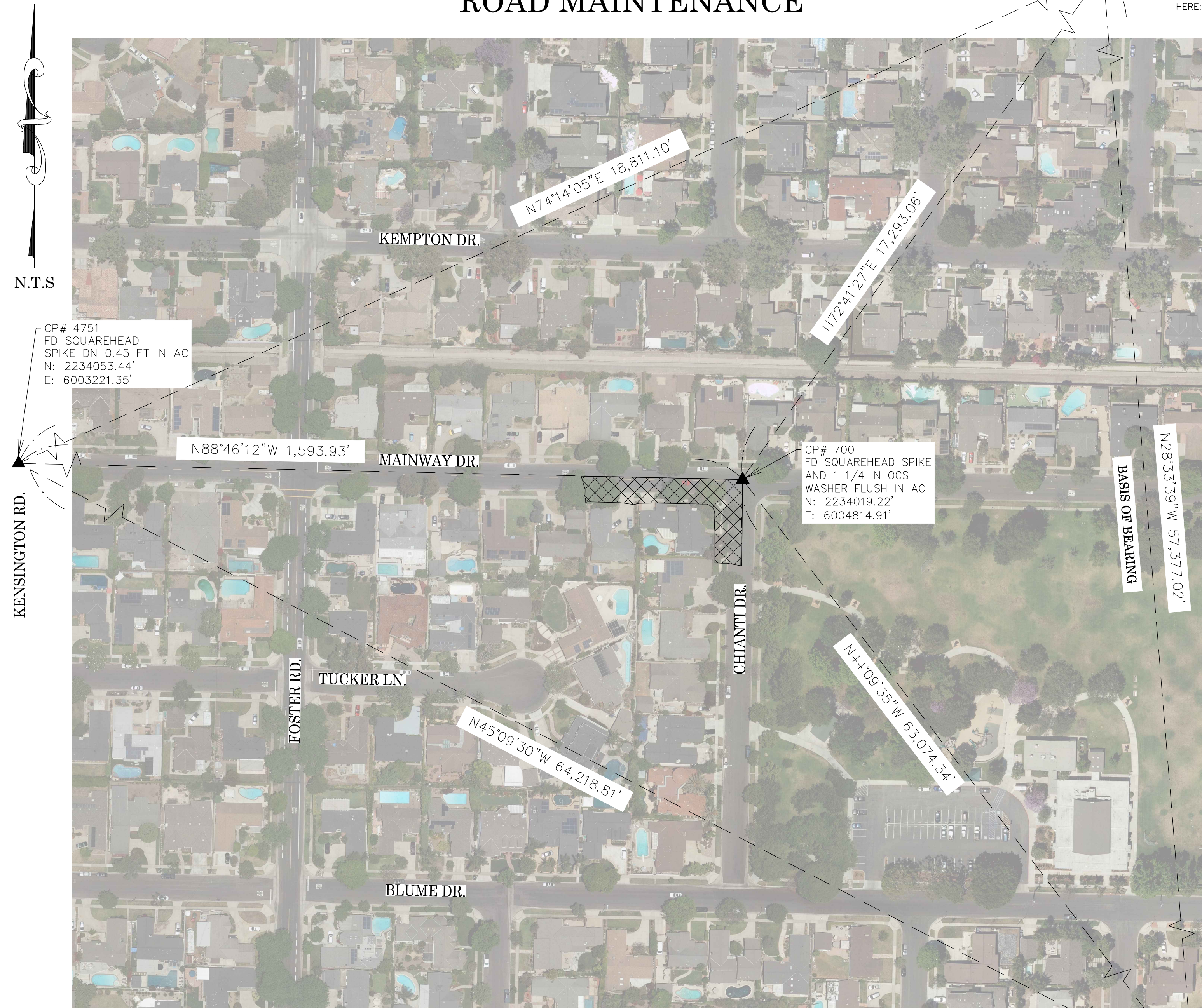
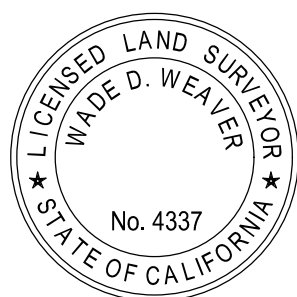
MICHAEL KUBISTY, PLS. SENIOR LAND SURVEYOR



DEPUTY COUNTY SURVEYOR'S STATEMENT:

THIS MAP HAS BEEN EXAMINED IN ACCORDANCE WITH THE PROFESSIONAL LAND SURVEYOR'S ACT; THIS 5 DAY OF OCTOBER, 2020.

WADE WEAVER, PLS. DEPUTY COUNTY SURVEYOR



FOUND CGPS "BLSA"  
N: 2239164.39'  
E: 6021324.82'  
THIS IS A CONTINUOUS GPS STATION (CGPS) AND IS PART OF THE CALIFORNIA SPATIAL REFERENCE NETWORK (CSRN), FROM WHICH DATA CAN BE DOWNLOADED HERE: [HTTP://SOPACCSRC.UCSD.EDU/](http://SOPACCSRC.UCSD.EDU/).

BASIS OF BEARINGS

THE BASIS OF BEARINGS FOR THIS SURVEY IS BASED ON THE CALIFORNIA COORDINATE SYSTEM (CCS83), ZONE VI, NAD 83, OCS (2017.50) EPOCH ADJUSTMENT, AS DETERMINED LOCALLY BY A LINE BETWEEN CONTINUOUS GLOBAL POSITIONING STATIONS "CGPS" STATIONS (FVPK) AND (BLSA) BEING NORTH 28°33'39" WEST AS DERIVED FROM THE COORDINATES PUBLISHED BY THE CALIFORNIA SPATIAL REFERENCE CENTER (CSRC) ALONG WITH DATA SHEETS ON FILE IN THE OFFICE OF THE ORANGE COUNTY SURVEYOR.

HORIZONTAL DATUM

COORDINATES SHOWN ARE BASED ON THE CALIFORNIA COORDINATE SYSTEM (CCS83), ZONE VI, NAD 83, OCS (2017.50) EPOCH ADJUSTMENT.  
ALL DISTANCES SHOWN ARE GRID, UNLESS OTHERWISE NOTED. TO OBTAIN GROUND DISTANCES MULTIPLY GRID BY A COMBINED FACTOR OF 1.00001047.  
COMBINATION FACTOR WAS HELD AT: MONUMENT NOTE [2]  
N:2234019.22" E:6004814.91" ELEVATION= 13.31'

VERTICAL DATUM

O.C.S. BM. 1A-144-04 ELEV. = 15.370' YEAR LEVELED: 2005  
NAVD 1988 (O.C.S. 1995 ADJUSTMENT)  
DESCRIPTION: FOUND 3 3/4" OCS ALUMINUM BENCHMARK DISK STAMPED "1A-144-04", SET IN THE SOUTHWESTERLY CORNER OF A 4.4 FT. BY 4.4 FT. CONCRETE CATCH BASIN. MONUMENT IS LOCATED IN THE NORTHEASTERLY CORNER OF THE INTERSECTION OF SEAL BEACH BOULEVARD AND ST. CLOUD DRIVE, 44 FT. EASTERLY OF THE CENTERLINE OF SEAL BEACH BOULEVARD AND 58 FT. NORTHERLY OF THE CENTERLINE OF ST. CLOUD DR. MONUMENT IS SET LEVEL WITH THE SIDEWALK

NOTES

THE SURVEY INFORMATION SHOWN HEREON IS TO BE USED FOR TOPOGRAPHIC RELATIONSHIPS ONLY AND IS NOT INTENDED FOR LAND ACQUISITION OR BOUNDARY PURPOSES.  
PARCELS SHOWN WITHOUT BEARING AND DISTANCES ARE FOR GRAPHICAL PURPOSES AND ARE PENDING RECEIPT OF TITLE REPORT.

SHEET INDEX

SHEET	NO.	DESCRIPTION
SHEET	1	TITLE SHEET
SHEET	2	BOUNDARY
SHEETS	3	TOPOGRAPHIC MAP
SHEETS	4	PROFILE MAP

PURPOSE OF SURVEY

THE PURPOSE OF THE SURVEY IS TO PROVIDE A TOPOGRAPHIC SURVEY ALONG THIS PORTION OF ROAD TO IDENTIFY LOW AND HIGH GRADE POINTS WITHIN ROAD CURB AND GUTTER FLOW LINE.

FOUND CGPS "FVPK"  
N: 2188769.57'  
E: 6048756.25'  
THIS IS A CONTINUOUS GPS STATION (CGPS) AND IS PART OF THE CALIFORNIA SPATIAL REFERENCE NETWORK (CSRN), FROM WHICH DATA CAN BE DOWNLOADED HERE: [HTTP://SOPACCSRC.UCSD.EDU/](http://SOPACCSRC.UCSD.EDU/).

TOPOGRAPHIC MAPPING PROJECT

COUNTY OF ORANGE OC PUBLIC WORKS OC SURVEY/FIELD SERVICES/BOUNDARY ANALYSIS & MAPPING			
ROSSMOOR - 12271 CHIANTI DR. ROAD MAINTENANCE			
TITLE SHEET			
PROJECT LIMITS: S/S 2902 MAINWAY TO W/S 12271 CHIANTI			
DATE OF SURVEY: 09/02/2020		BY: T. LOFGREEN & CREW	
MAPPING		BY: L. ISLAS	
OFFICE CHECK		BY: M. KUBISTY, PLS	
FIELD CHECK		BY: T. LOFGREEN	
SCALE: N.T.S.		W.O. #ER19202	FILE #1920PW-OP0016
FILE: CHIANTI_DR_TOPO_2020.DWG			
MARK	DATE	ITEM	
REVISIONS			
			SHEET NO. 1 of 4



MONUMENT NOTES

- 1

FOUND PK NAIL AND 1-1/2" OCS WASHER PER (R3), FLUSH IN AC. ACCEPTED AS CL INTERSECTION OF MAIN WAY DRIVE AND SILVER FOX ROAD PER (R5).
- 2

FOUND SPIKE AND 1-1/2" OCS WASHER PER (R4), FLUSH IN AC ACCEPTED AS INTERSECTION OF CHIANTI DRIVE AND MAIN WAY DRIVE, PER (R1).
- 3

FOUND SPIKE SHAFT IN LIEU OF PUN. SPIKE AND WASHER PER (R3), ACCEPTED AS INTERSECTION OF MAIN WAY DRIVE AND KENSINGTON ROAD PER (R2), POINT FITS TIES PER (R3).
- 4

FOUND SPIKE AND 1-1/2" OCS WASHER PER (R3), FLUSH IN AC ACCEPTED AS INTERSECTION OF WEMBLEY ROAD AND BLUME DRIVE PER (R2).
- 5

FOUND SPIKE AND 1-1/2" OCS WASHER PER (R3), FLUSH IN AC ACCEPTED AS INTERSECTION OF BLUME DRIVE AND BALLANTINE DRIVE PER (R5).
- 6

FOUND NAIL IN CHISELED "+" (NO TAG) IN LIEU OF NAIL & TAG STAMPED "LS 2383" PER (R1), FLUSH IN CONCRETE SIDEWALK, ACCEPTED AS ONE FOOT OFFSET TO N'LY RIGHT OF WAY OF MAIN WAY DR, PER (R1).
- 7

FOUND LEAD, TACK & TAG STAMPED "LS 2383" PER (R1), FLUSH IN CONCRETE SIDEWALK WITH CHISEL "+", ACCEPTED AS ONE FOOT OFFSET TO N'LY RIGHT OF WAY OF MAIN WAY DR, PER (R1).

LEGEND

- FOUND MONUMENT AS NOTED
- FOUND LEAD, TACK & 3/4" BRASS TAG STAMPED "OCS TIE" PER (R3), FLUSH IN TOP OF CURB
- ⊗

SEARCHED FOUND NOTHING

BASIS OF BEARINGS

THE BASIS OF BEARINGS SHOWN HEREON ARE BASED ON THE CGPS STATIONS (FVFK) AND (BLSA) HAVING A BEARING OF NORTH 28°33'39" WEST.

HORIZONTAL DATUM

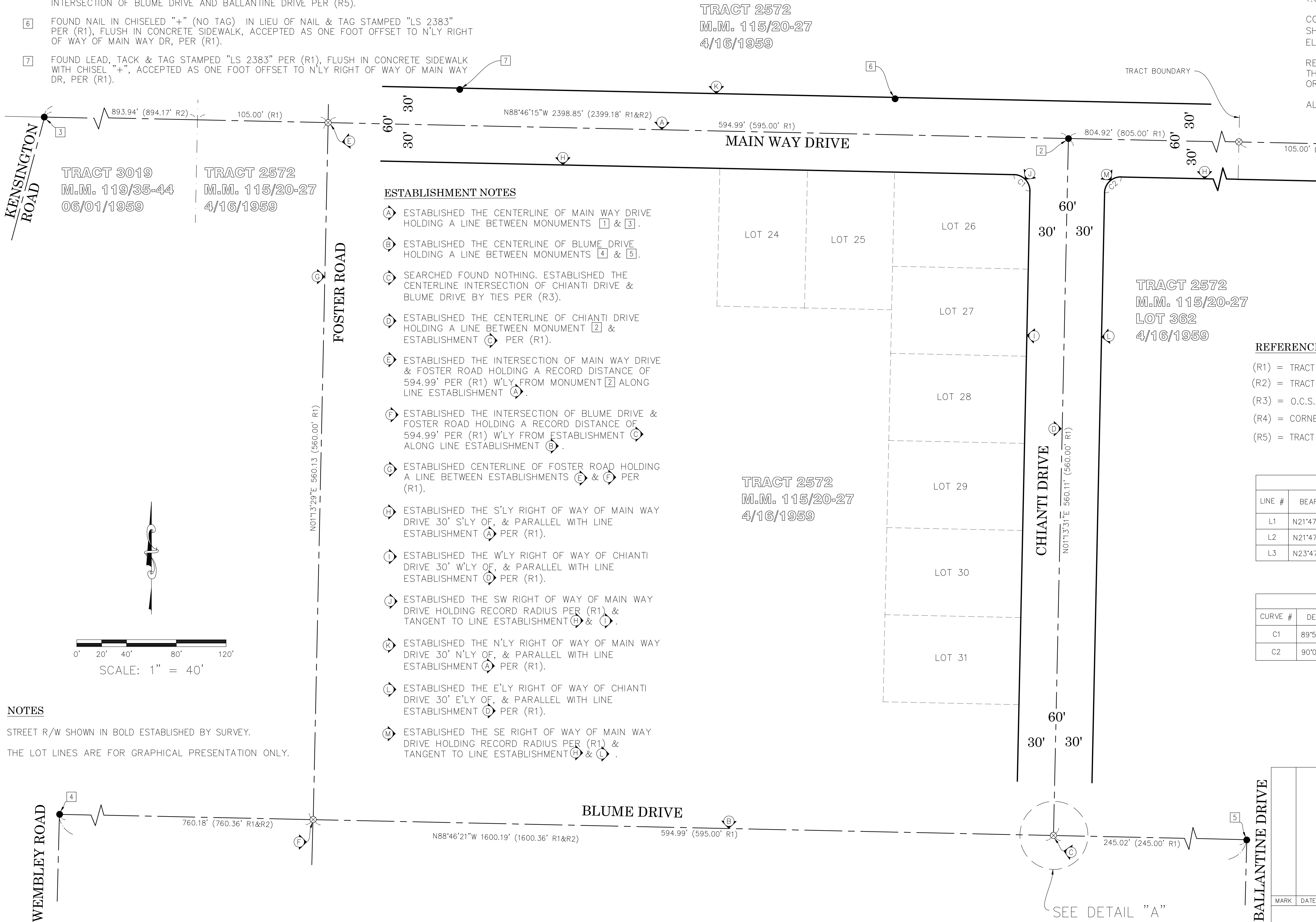
COORDINATES SHOWN ARE BASED ON THE CALIFORNIA COORDINATE SYSTEM (CCS83), ZONE VI, NAD 83, OCS (2017.50) EPOCH ADJUSTMENT.

ALL DISTANCES SHOWN ARE GRID, UNLESS OTHERWISE NOTED. TO OBTAIN GROUND DISTANCE MULTIPLY A GRID DISTANCE BY 1.00001047.

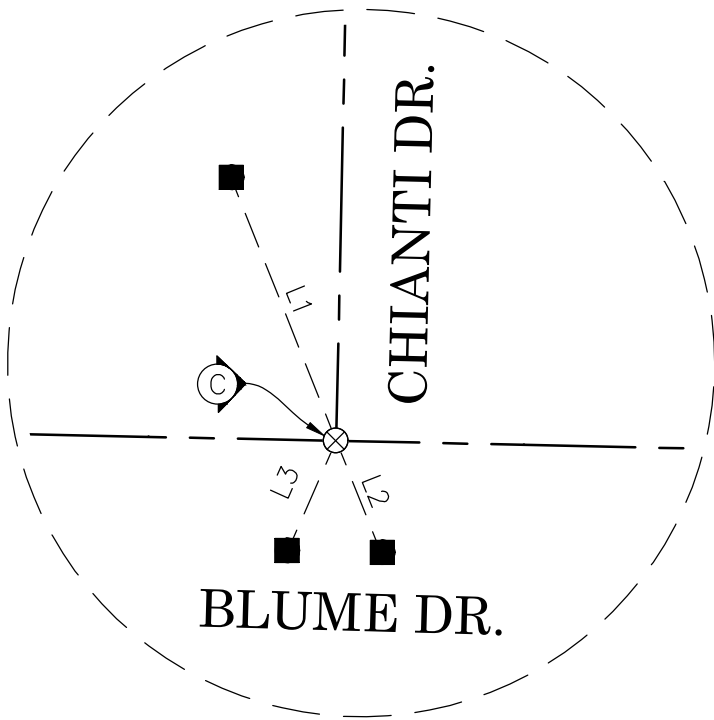
COMBINATION FACTOR WAS HELD AT MONUMENT 700 AS SHOWN ON SHEET ONE. N: 2234019.22', E: 6004814.91', ELEVATION= 13.31'

RECORD DISTANCES SHOWN HEREON ARE AS THEY APPEAR ON THE DOCUMENT OF RECORD. DISTANCES MAY BE EITHER GRID OR GROUND, AS PER SAID RECORD.

ALL DISTANCES ARE BASED ON THE U.S. SURVEY FOOT.



DETAIL "A"  
N.T.S.



REFERENCES

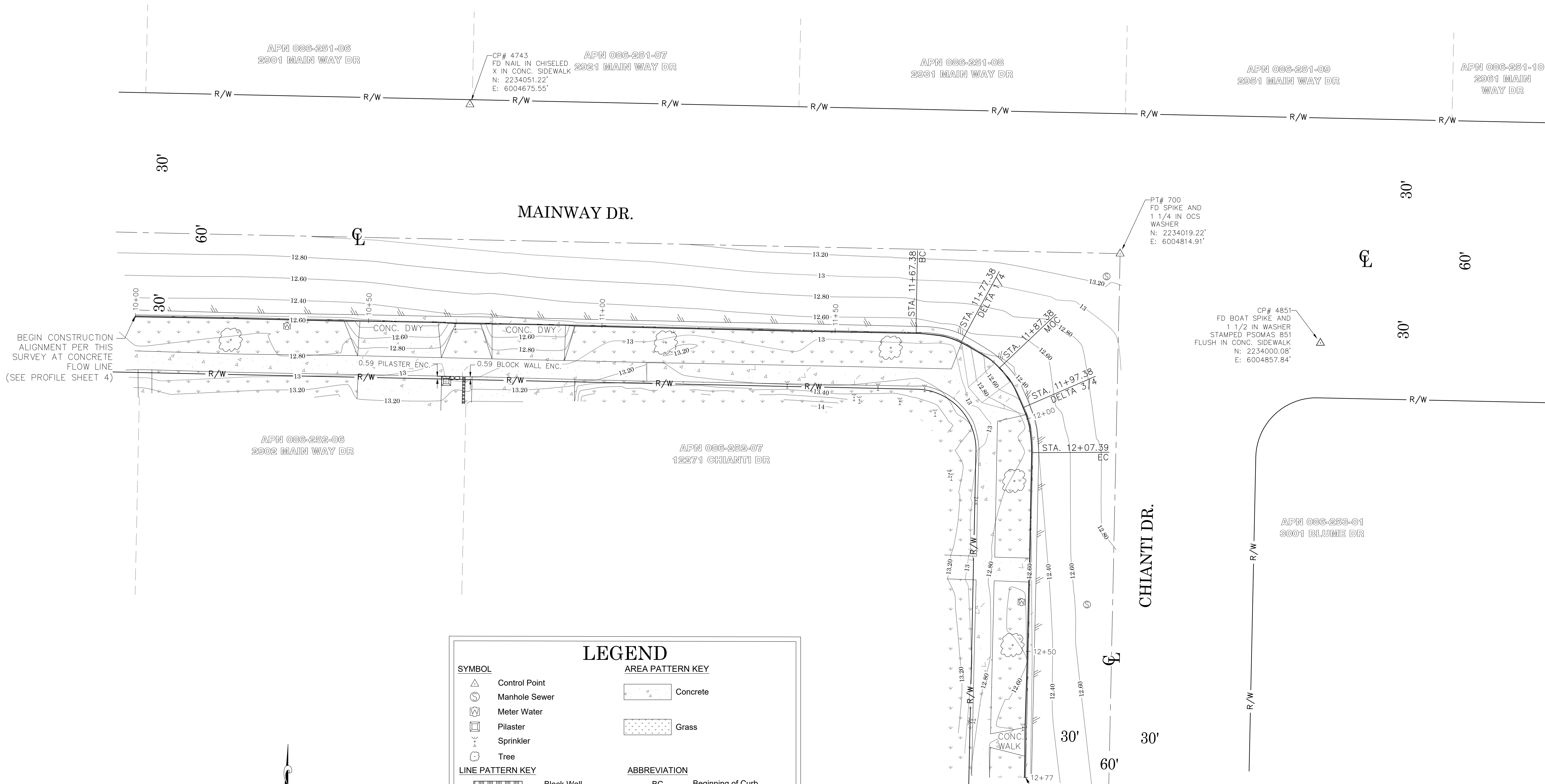
- (R1) = TRACT NO. 2572, MM 115/20-27  
(R2) = TRACT NO. 3019, MM 119/35-44  
(R3) = O.C.S. ALIGNMENT NOTE A/4-11&12/1022-1044  
(R4) = CORNER RECORD 1998-0351  
(R5) = TRACT NO. 3224, MM 26-29

LINE TABLE			
LINE #	BEARING	MEASURED DISTANCE	RECORD DISTANCE
L1	N21°47'39"W	46.60'	46.57' (R3)
L2	N21°47'21"W	19.79'	19.78' (R3)
L3	N23°47'34"E	19.71'	19.74' (R3)

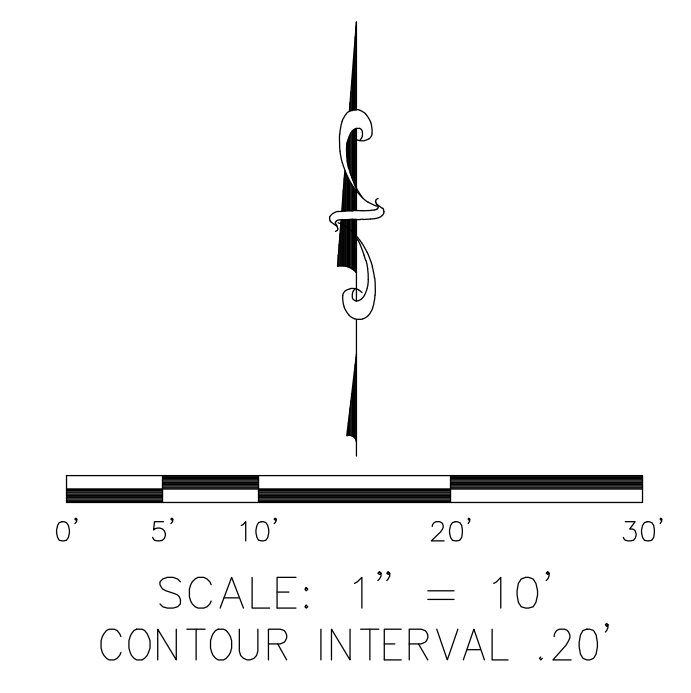
CURVE TABLE						
CURVE #	DELTA	RADIUS	LENGTH	RECORD DELTA	RECORD RADIUS	RECORD LENGTH
C1	89°59'47"	13.00'	20.42'	90°00'00" (R1)	13.00' (R1)	20.42' (R1)
C2	90°00'13"	13.00'	20.42'	90°00'00" (R1)	13.00' (R1)	20.42' (R1)



			COUNTY OF ORANGE OC PUBLIC WORKS		
			12271 CHIANTI ROAD		
			BOUNDARY MAP		
			PROJECT LIMITS: 2902 MAIN WAY DRIVE		
			TO 12271 CHIANTI DRIVE		
			DATE OF SURVEY: 09/18/20	BY: T. LOFGREEN	SHEET NO.  2  of  4
			MAPPING	BY: S. STROM	
			OFFICE CHECK	BY: M. KUBISTY, PLS	
			FIELD CHECK	BY: T. LOFGREEN	
MARK	DATE	ITEM	SCALE: 1" = 40'	W.O. #ER19202	FILE #1920PW-OP0016
REVISIONS			FILE: 12271 CHIANTI_BOUNDARY_2020.DWG		



**U.S. Survey Foot**  
OC Public Works  
OC Survey/Field Services  
Boundary Analysis & Mapping



### LEGEND

**SYMBOL**

- Control Point
- Manhole Sewer
- Meter Water
- Pilaster
- Sprinkler
- Tree

**LINE PATTERN KEY**

- Block Wall
- Centerline
- Edge of Concrete
- Edge of Asphalt Pavement
- Fence Wrought Iron
- Flowline
- Right of Way
- Parcel Line

**AREA PATTERN KEY**

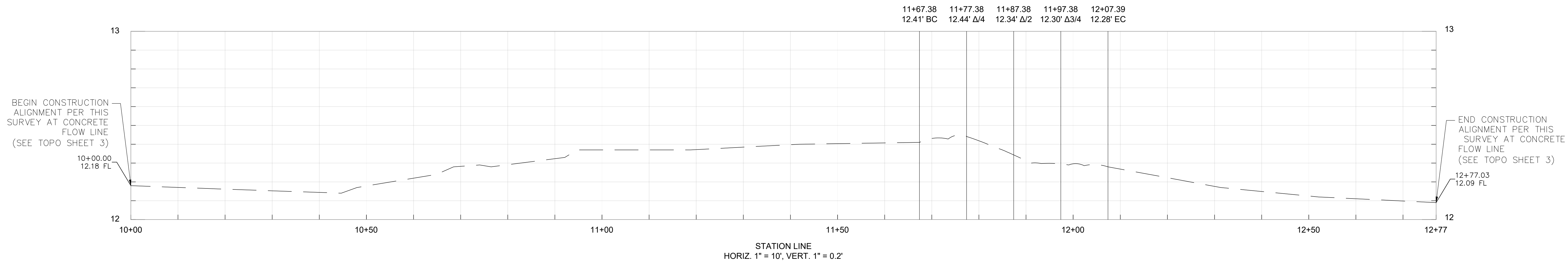
- Concrete
- Grass

**ABBREVIATION**

- BC Beginning of Curb
- CONC Concrete
- CP Control Point
- DWY Driveway
- EC End of Curb
- FD Found
- MOC Middle of Curb

COUNTY OF ORANGE OC PUBLIC WORKS OC SURVEY/FIELD SERVICES/BOUNDARY ANALYSIS & MAPPING			
ROSSMOOR - 12271 CHIANTI DR. ROAD MAINTENANCE			
TOPOGRAPHIC MAP			
PROJECT LIMITS: S/S 2902 MAINWAY TO W/S 12271 CHIANTI			
DATE OF SURVEY: 09/02/2020	BY: T. LOFGREEN & CREW	SHEET NO.	
MAPPING	BY: L. ISLAS	3	
OFFICE CHECK	BY: M. KUBISTY, PLS	of	
FIELD CHECK	BY: T. LOFGREEN	4	
SCALE: 1" = 10'	W.O. #ER19202	FILE #1920PW-OP0016	
FILE: CHIANTI_DR_TOPO_2020.DWG			
MARK	DATE	ITEM	REVISIONS

PROFILE OF THE EXISTING S'LY, SE'LY, & W'LY CONCRETE  
FLOWLINE OF MAINWAY DRIVE & CHIANTI DRIVE



NOTE: THE ALIGNMENT FOR THIS PROFILE WAS DEVELOPED HOLDING A  
STATION OF 10+00 AT THE W'LY END OF THE EXISTING CONCRETE  
FLOWLINE OF THE S'LY SIDE OF MAINWAY DR AND INCREASING E'LY  
AS SHOWN ON SHEET 1

		COUNTY OF ORANGE OC PUBLIC WORKS OC SURVEY/FIELD SERVICES/BOUNDARY ANALYSIS & MAPPING			
		ROSSMOOR - 12271 CHIANTI DR. ROAD MAINTENANCE			
		PROFILE VIEW			
		PROJECT LIMITS: S/S 2902 MAINWAY TO W/S 12271 CHIANTI			
		DATE OF SURVEY: 09/02/2020		BY: T. LOFGREEN & CREW	
		MAPPING		BY: L. ISLAS	
		OFFICE CHECK		BY: M. KUBISTY, PLS	
		FIELD CHECK		BY: T. LOFGREEN	
		SCALE: 1" = 10'		W.O. #ER19202	
		FILE: CHIANTI_DR_TOPO_2020.DWG		FILE #1920PW-OP0016	
MARK	DATE	ITEM		SHEET NO. 4 of 4	
		REVISIONS			