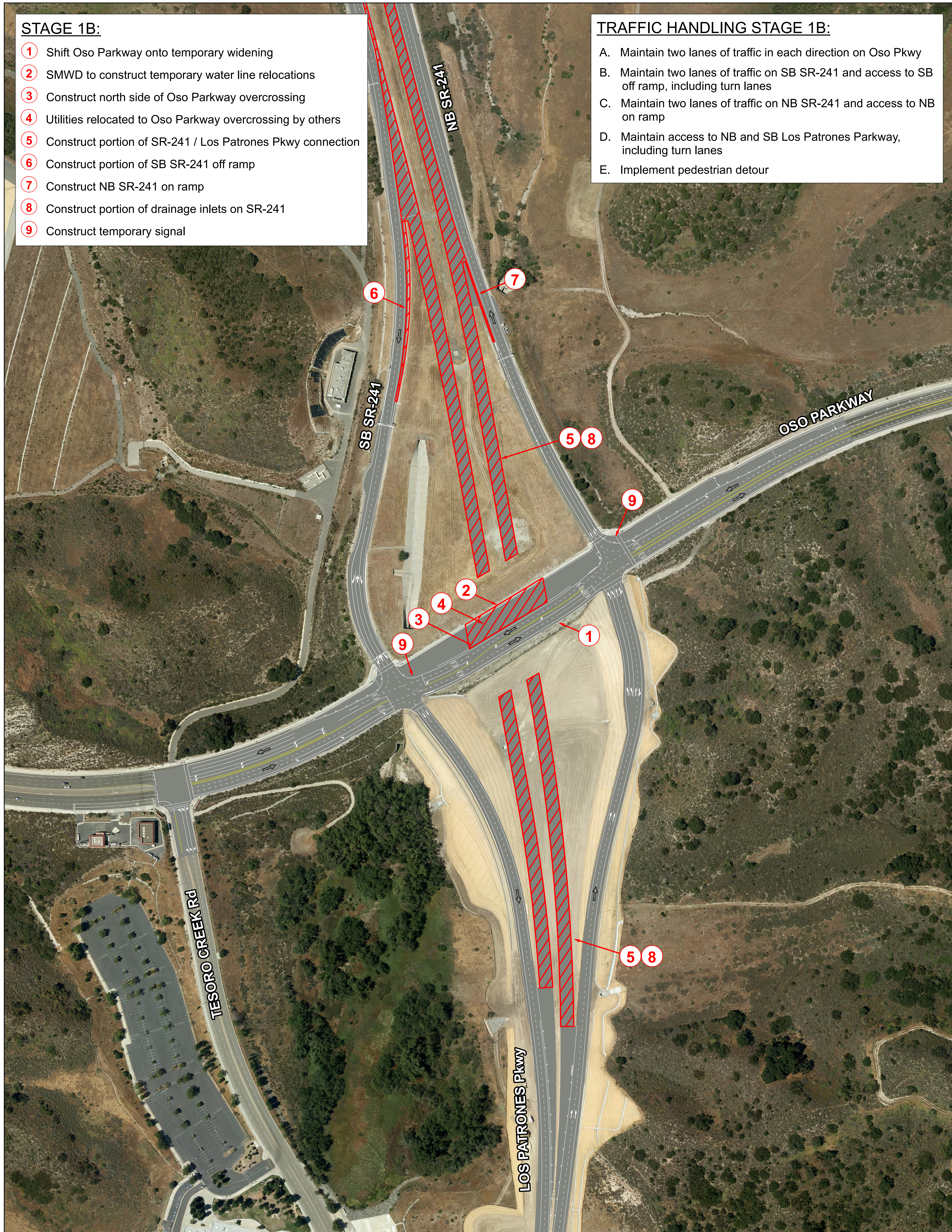
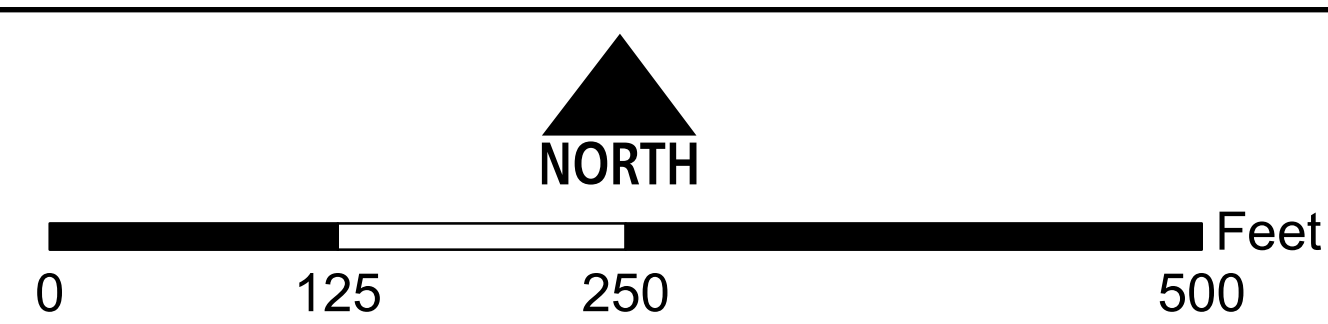


- 1 Shift Oso Parkway onto temporary widening
- 2 SMWD to construct temporary water line relocations
- 3 Construct north side of Oso Parkway overcrossing
- 4 Utilities relocated to Oso Parkway overcrossing by others
- 5 Construct portion of SR-241 / Los Patrones Pkwy connection
- 6 Construct portion of SB SR-241 off ramp
- 7 Construct NB SR-241 on ramp
- 8 Construct portion of drainage inlets on SR-241
- 9 Construct temporary signal



- A. Maintain two lanes of traffic in each direction on Oso Pkwy
- B. Maintain two lanes of traffic on SB SR-241 and access to SB off ramp, including turn lanes
- C. Maintain two lanes of traffic on NB SR-241 and access to NB on ramp
- D. Maintain access to NB and SB Los Patrones Parkway, including turn lanes
- E. Implement pedestrian detour



OSO PARKWAY: STAGE 1B



Legend

-  Construction this stage
-  Overnight / Weekend construction this stage
-  Direction of traffic



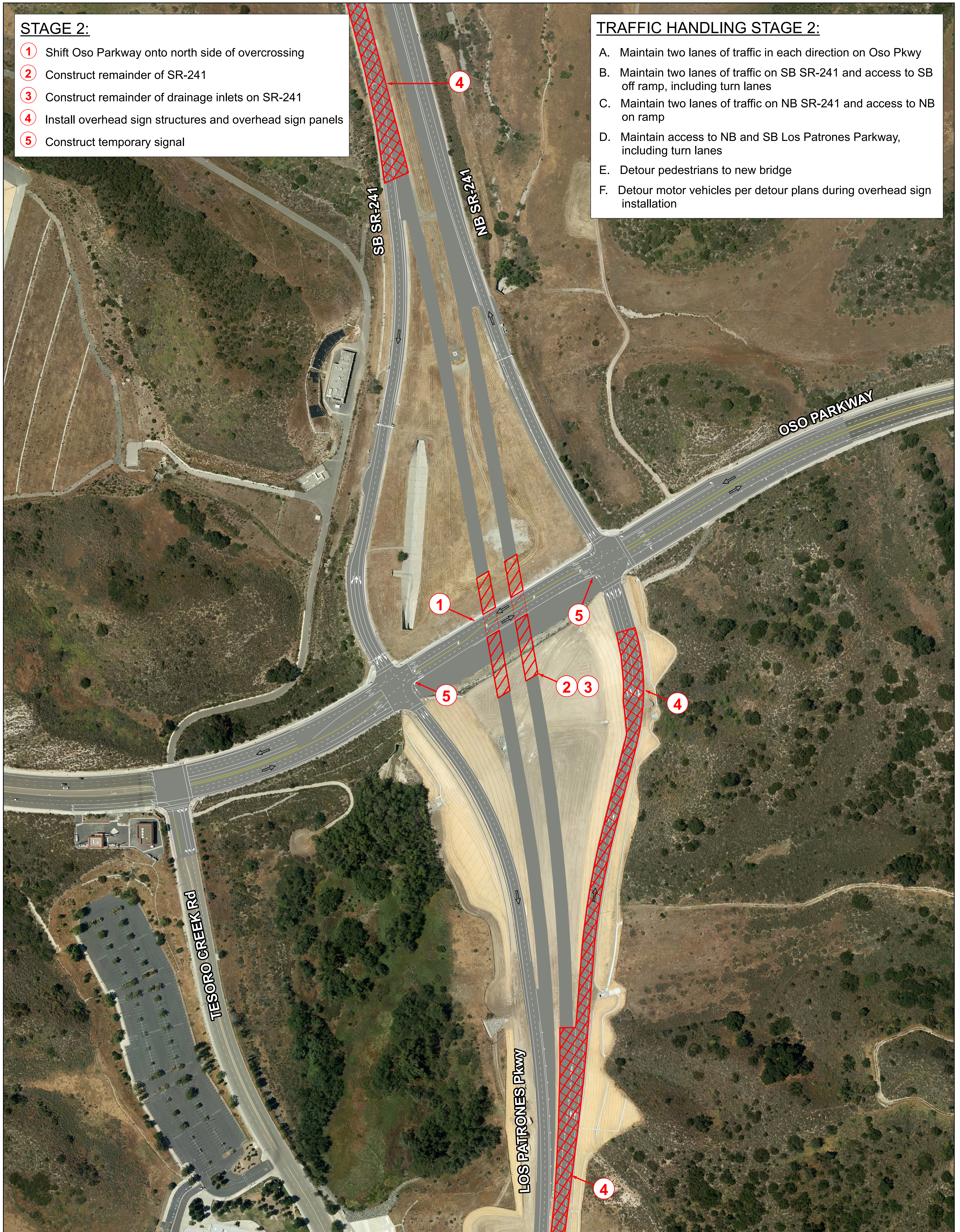
DESIGNED AND PRODUCED BY:
OC Survey
Geomatics Services, GIS Applications
James Reed

SATA SOURCE:
- Eagle Aerial, 3 inch resolution, flown
- Geomatics Services, Land Information
The County of Orange and OC Survey
representations or warranties regarding
data from which this map was derived.
Geomatics/LS/GIS shall be liable for any
direct, indirect, special, incidental,
damages with respect to any claim for
injury on account of or arising from

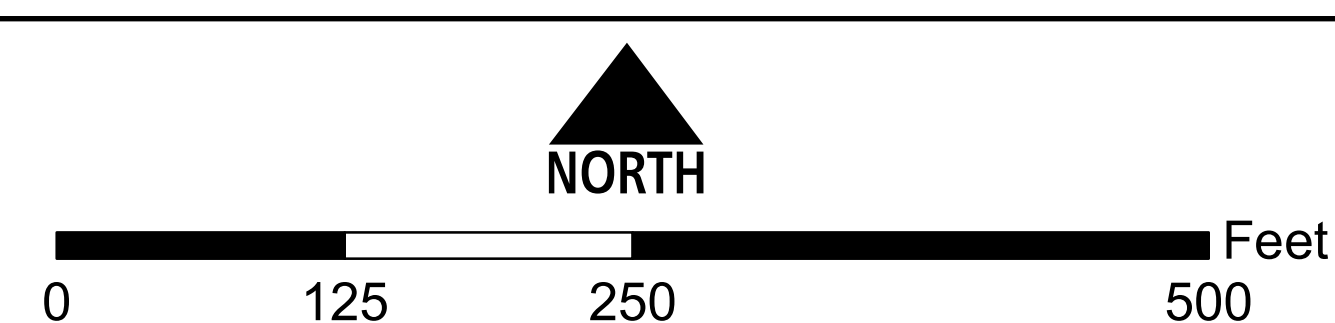
DATE: March 12, 2018

- ① Shift Oso Parkway onto north side of overcrossing
- ② Construct remainder of SR-241
- ③ Construct remainder of drainage inlets on SR-241
- ④ Install overhead sign structures and overhead sign panels
- ⑤ Construct temporary signal




- A. Maintain two lanes of traffic in each direction on Oso Pkwy
- B. Maintain two lanes of traffic on SB SR-241 and access to SB off ramp, including turn lanes
- C. Maintain two lanes of traffic on NB SR-241 and access to NB on ramp
- D. Maintain access to NB and SB Los Patrones Parkway, including turn lanes
- E. Detour pedestrians to new bridge
- F. Detour motor vehicles per detour plans during overhead sign installation



OSO PARKWAY: STAGE 2



Legend

-  Construction this stage
-  Overnight / Weekend construction this stage
-  Direction of traffic



DESIGNED AND PRODUCED BY:
Survey
Spatial Services, GIS Applications Unit
in Field

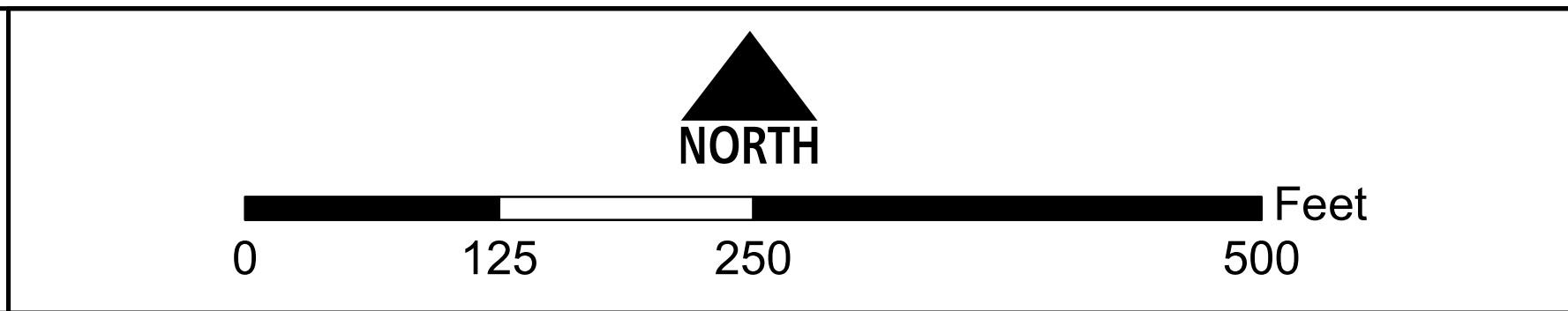
A SOURCE:
Map April, 3 inch resolution, Town/US 17 - 744
Spatial Services, Land Information Systems D
City of Orange and OC Survey/GIS/ES
warranties or warranties regarding the accuracy
from which this map was derived. Neither the
from US/GIS shall be liable under any circum-
direct, indirect, special, incidental or consequen-
tial with respect to any claim by any user or
on account of or arising from the use of this
C: March 12, 2018



- STAGE 3:**
- 1 Construct reminder of Oso Parkway overcrossing
 - 2 Construct reminder of SB SR-241 off-ramp
 - 3 Remove and install drainage inlet on Oso Parkway

- TRAFFIC HANDLING STAGE 3:**
- A. Maintain two lanes of traffic in each direction on Oso Parkway
 - B. Open NB and SB SR-241 mainline
 - C. Maintain access to NB and SB ramps

OSO PARKWAY: STAGE 3



- Legend**
- Construction this stage
 - Overnight / Weekend construction this stage
 - Direction of traffic

