

Designation: 3W-69-99

Date Destroyed:

Date Revised: 5/28/2013

GPS #:

OCS Index Map: Q18-10

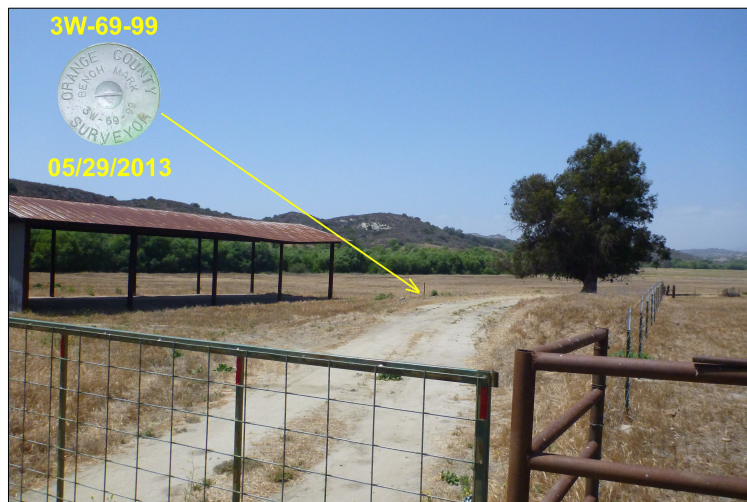
Page/Grid: 953/C-2

City / Location: Unin., Orange Co.

Line #/SSN: 370/0480

Established By: OCS 1999

Monument Type: Orange County Surveyor's 3 3/4"
Aluminum Disk



NAVD88 (ft)	NGVD29 (ft)	Year Leveled
368.550	366.214	1999

For Reconnaissance Only!	
Latitude (30' +/-)	Longitude (30' +/-)
33 32 37.29106	117 35 19.62858

Description:

DESCRIBED BY OCS 2013 - FOUND 3 3/4" OCS ALUMINUM BENCHMARK DISK STAMPED "3W-69-99", SET IN THE TOP OF A 6 IN. BY 6 IN. CONCRETE POST, UP 0.3 FT. WITH A STEEL WITNESS POST WESTERLY AND 2-CARSONITE WITNESS POSTS NORTHEASTERLY AND SOUTHEASTERLY. MONUMENT IS LOCATED IN CANADA GOBENADORA. TO REACH MONUMENT FROM THE GATE INTO SAID CANYON (LATITUDE 33-31-27, LONGITUDE 117-35-45), PROCEED THRU GATE AND CONTINUE ALONG DIRT ROAD INTO CANADA GOBENADORA 1.5 MILES TO LOCKED METAL GATE. BENCHMARK IS LOCATED 120 FT. NORTH OF GATE, 15 FT. WEST OF ROAD, AND 25 FT. EAST OF THE NORTH END OF THE AGRICULTURE STORAGE SHED.

