

Designation: 3K-49-92

Date Destroyed:

Date Revised: 6/27/2011

GPS #:

OCS Index Map: Q16-05

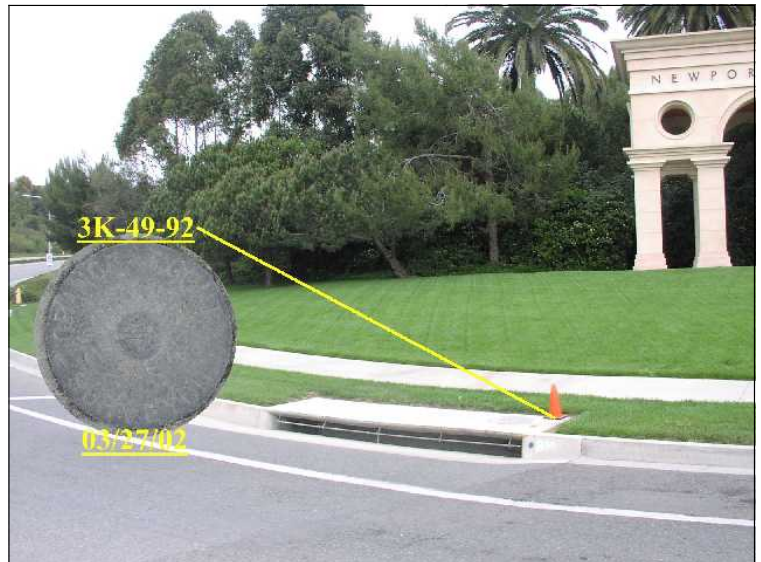
Page/Grid: 919/H-4

City / Location: Crystal Cove

Line #/SSN: 400/0560

Established By: OCS 1992

Monument Type: Orange County Surveyor's 3 3/4"
Aluminum Disk



NAVD88 (ft)	NGVD29 (ft)	Year Leveled
132.395	130.048	2011
132.395	130.048	2004
132.395	130.048	1992

For Reconnaissance Only!	
Latitude (30' +/-)	Longitude (30' +/-)
33 34 59.41	117 50 54.57

Description:

DESCRIBED BY OCS 2002 - FOUND 3 3/4" OCS ALUMINUM BENCHMARK DISK STAMPED "3K-49-92", SET IN THE SOUTHEAST CORNER OF A 4 FT. BY 15 FT. CONCRETE CATCH BASIN. MONUMENT IS LOCATED IN THE NORTHEAST CORNER OF THE INTERSECTION OF PACIFIC COAST HIGHWAY AND NEWPORT COAST DRIVE, 120 FT. NORTHERLY OF PCH AND 75 FT. EASTERLY OF THE CENTERLINE OF NEWPORT COAST DRIVE. MONUMENT IS SET LEVEL WITH THE SIDEWALK.

