

## Designation: 3K-36-70

Date Destroyed:

Date Revised:

GPS #:

OCS Index Map: Q16-12

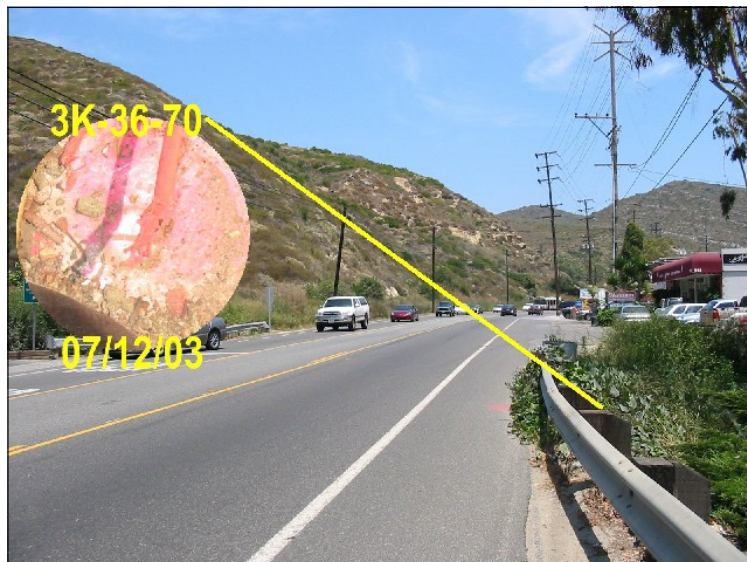
Page/Grid: 950/H-1

City / Location: Laguna Beach

Line #/SSN: 360/0030

Established By: OCS 1970

Monument Type: Orange County Surveyor's 3 3/4"  
Aluminum Disk



NAVD88 (ft)	NGVD29 (ft)	Year Leveled
105.955	103.610	1992

For Reconnaissance Only!	
Latitude (30' +/-)	Longitude (30' +/-)
33 33 27.80	117 46 26.07

### Description:

DESCRIBED BY OCS 2003 - FOUND 3 3/4" OCS ALUMINUM BENCHMARK DISK STAMPED "3K-36-70", SET IN THE TOP OF A CONCRETE HEADWALL. MONUMENT IS LOCATED ALONG THE SOUTHEASTERLY SIDE OF LAGUNA CANYON ROAD (RTE #133), 1.15 MILES NORTHERLY ALONG LAGUNA CANYON FROM THE CENTERLINE OF PACIFIC COAST HIGHWAY, 25 FT. SOUTHEASTERLY OF THE CENTERLINE OF LAGUNA CANYON ROAD AND 29.5 FT. SOUTHWESTERLY OF A FIRE HYDRANT. MONUMENT IS SET 1 FT. LOWER THAN LAGUNA CANYON ROAD.

