

Designation: 3F-123-91

Date Destroyed:

Date Revised:

GPS #:

OCS Index Map: Q12-12

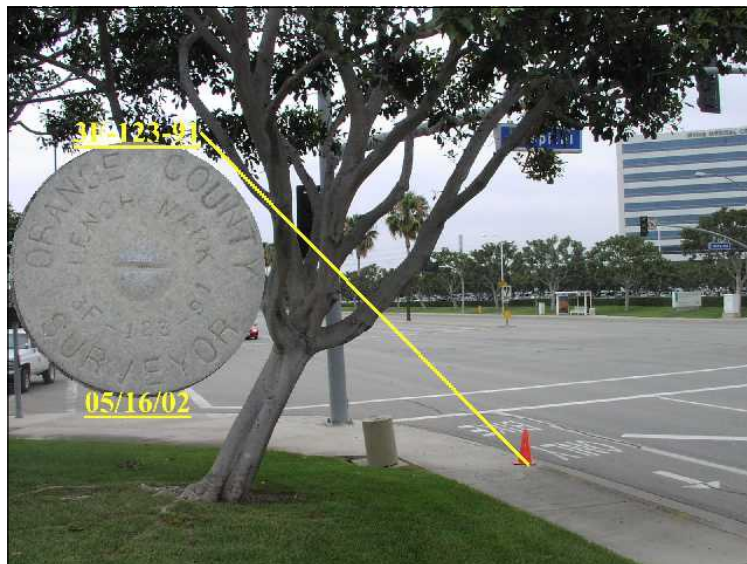
Page/Grid: 890/H-1

City / Location: Irvine

Line #/SSN: 356/0260

Established By: OCS 1991

Monument Type: Orange County Surveyor's 3 3/4"
Aluminum Disk



NAVD88 (ft)	NGVD29 (ft)	Year Leveled
151.469	149.087	1991

For Reconnaissance Only!	
Latitude (30' +/-)	Longitude (30' +/-)
33 39 30.16	117 46 22.45

Description:

DESCRIBED BY OCS 2002 - FOUND 3 3/4" OCS ALUMINUM BENCHMARK DISK STAMPED "3F-123-91", SET IN THE NORTHWESTERLY CORNER OF A 14 FT. BY 4 FT. CONCRETE CATCH BASIN. MONUMENT IS LOCATED IN THE SOUTHEASTERLY CORNER OF THE INTERSECTION OF HOSPITAL DRIVE AND ALTON PARKWAY, 75 FT. SOUTHERLY OF THE CENTERLINE OF ALTON AND 55 FT. EASTERLY OF THE CENTERLINE OF HOSPITAL. MONUMENT IS SET LEVEL WITH THE SIDEWALK.

