

Designation: 1E-93-69

Date Destroyed:

Date Revised:

GPS #:

OCS Index Map: Q11-15

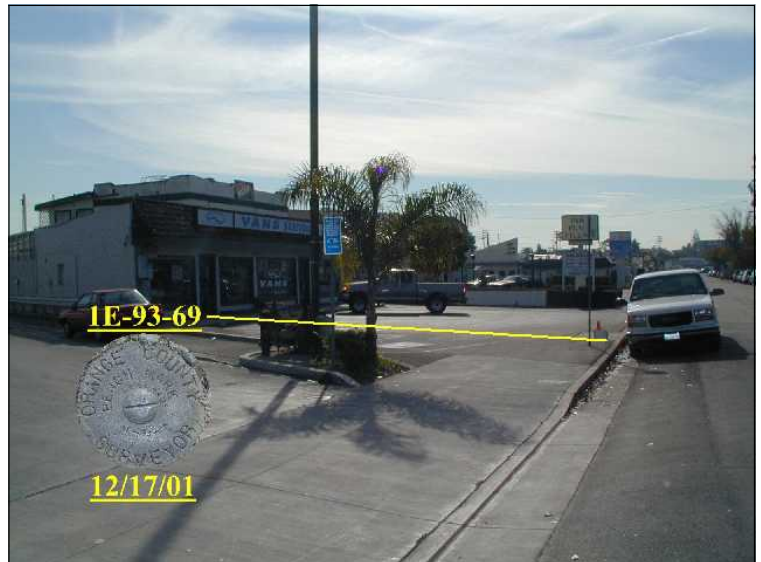
Page/Grid: 888/J-4

City / Location: Costa Mesa

Line #/SSN: 403/0140

Established By: OCS 1969

Monument Type: Orange County Surveyor's 3 3/4"
Aluminum Disk



| NAVD88 (ft) | NGVD29 (ft) | Year Leveled |
|-------------|-------------|--------------|
| 88.755 | 86.368 | 2005 |
| 88.806 | 86.400 | 1992 |
| | | |
| | | |

| For Reconnaissance Only! | |
|--------------------------|---------------------|
| Latitude (30' +/-) | Longitude (30' +/-) |
| 33 38 09.35 | 117 55 18.52 |

Description:

DESCRIBED BY OCS 2001 - FOUND 3 3/4" OCS ALUMINUM BENCHMARK DISK STAMPED "1E-93-69", SET IN THE NORTHWEST CORNER OF A 4 FT. BY 8 FT. CONCRETE CATCH BASIN. MONUMENT IS LOCATED IN THE SOUTHEAST CORNER OF THE INTERSECTION OF 17TH STREET AND OLD NEWPORT BOULEVARD, 20 FT. SOUTHEASTERLY OF THE CENTERLINE OF OLD NEWPORT BOULEVARD AND 475 FT. SOUTHERLY OF THE CENTERLINE OF 17TH STREET. MONUMENT IS SET LEVEL WITH THE SIDEWALK.

