

Designation: FV-55-70

Date Destroyed: **9/2/2004**

Date Revised:

GPS #:

OCS Index Map: Q11-06

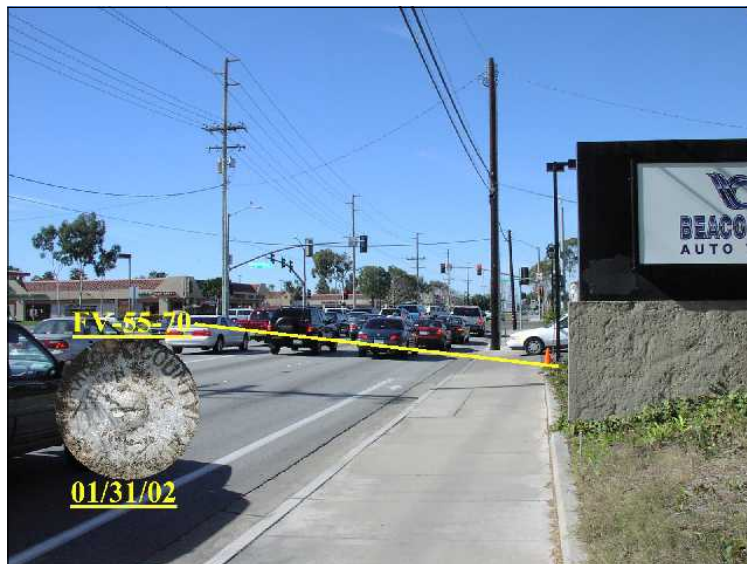
Page/Grid: 858/E-3

City / Location: Fountain Valley

Line #/SSN: 610/0020

Established By: OCS 1970

Monument Type: Orange County Surveyor's 3 3/4"
Aluminum Disk



NAVD88 (ft)	NGVD29 (ft)	Year Leveled
18.553	16.131	1992

For Reconnaissance Only!	
Latitude (30' +/-)	Longitude (30' +/-)
33 41 39.29	117 57 12.62

Description:

REPORTED DESTROYED (SEE DATE IN DESTROYED BOX) - ORIGINAL DESCRIPTION BEING: DESCRIBED BY OCS 2002 - FOUND 3 3/4" OCS ALUMINUM BENCHMARK DISK STAMPED "FV-55-70", SET IN THE TOP OF A 6 IN. BY 6 IN. CONCRETE POST. MONUMENT IS LOCATED IN THE NORTHEAST CORNER OF THE INTERSECTION OF BROOKHURST STREET AND ELLIS AVENUE, 42 FT. NORTHERLY OF THE CENTERLINE OF ELLIS AVENUE AND 160 FT. EASTERLY OF THE PROLONGATION OF THE EAST CURB ALONG BROOKHURST STREET. MONUMENT IS SET DOWN 0.2 FT. FROM THE TOP OF THE CURB.

NO
LOCATION
MAP