

## Designation: 3B-52-68

Date Destroyed:

Date Revised:

GPS #:

OCS Index Map: Q20-08

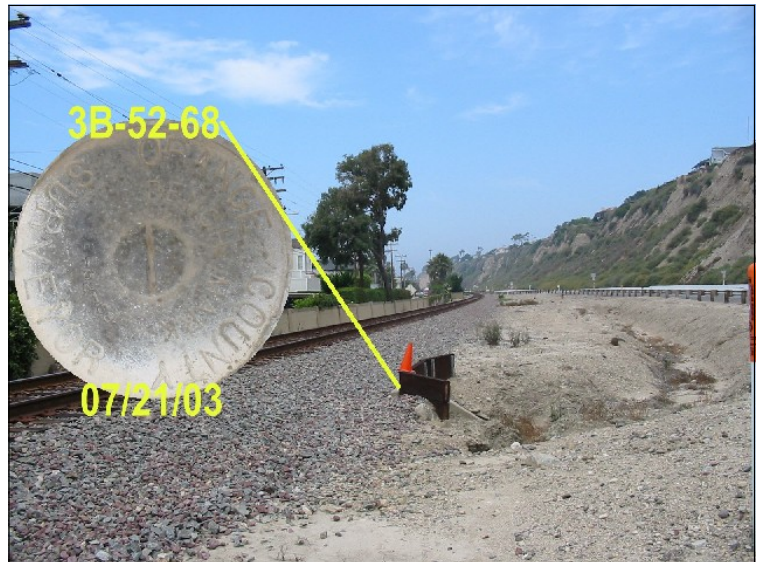
Page/Grid: 992/D-1

City / Location: Dana Point

Line #/SSN: 400/0120

Established By: OCS 1968

Monument Type: Orange County Surveyor's 3 3/4"  
Aluminum Disk



NAVD88 (ft)	NGVD29 (ft)	Year Leveled
18.235	15.957	1989

For Reconnaissance Only!	
Latitude (30' +/-)	Longitude (30' +/-)
33 26 50.77	117 39 12.43

### Description:

DESCRIBED BY OCS 2003 - FOUND 3 3/4" OCS ALUMINUM BENCHMARK DISK STAMPED "3B-52-68", SET IN THE TOP OF A CONCRETE HEADWALL FOR A 36 IN. CONCRETE PIPE CROSSING UNDER THE ATCHINSON TOPEKA AND SANTA FE RAILWAY. MONUMENT IS LOCATED ALONG THE SOUTHWESTERLY SIDE OF EL CAMINO REAL, 1.85 MILES SOUTHERLY ALONG EL CAMINO FROM THE INTERSECTION OF STATE HIGHWAY 1, 62 FT. SOUTHWESTERLY OF THE CENTERLINE OF EL CAMINO, 354 FT. SOUTHWESTERLY OF MILE POLE #202 AND 9.5 FT. NORTHEASTERLY OF THE NORTHEASTERLY RAIL ALONG THE RAILWAY. MONUMENT IS SET LEVEL WITH THE HEIGHT OF THE ROAD.

