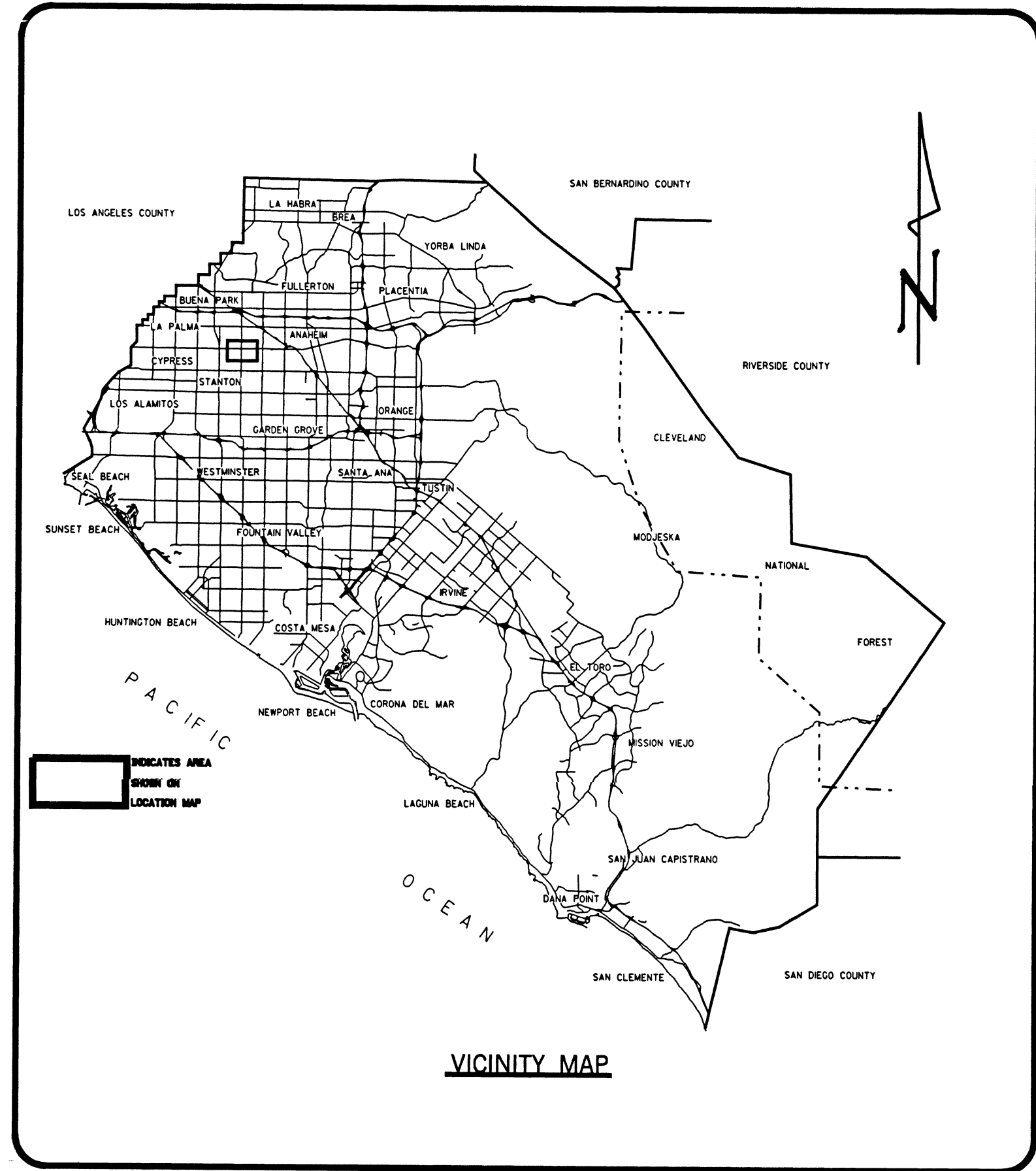
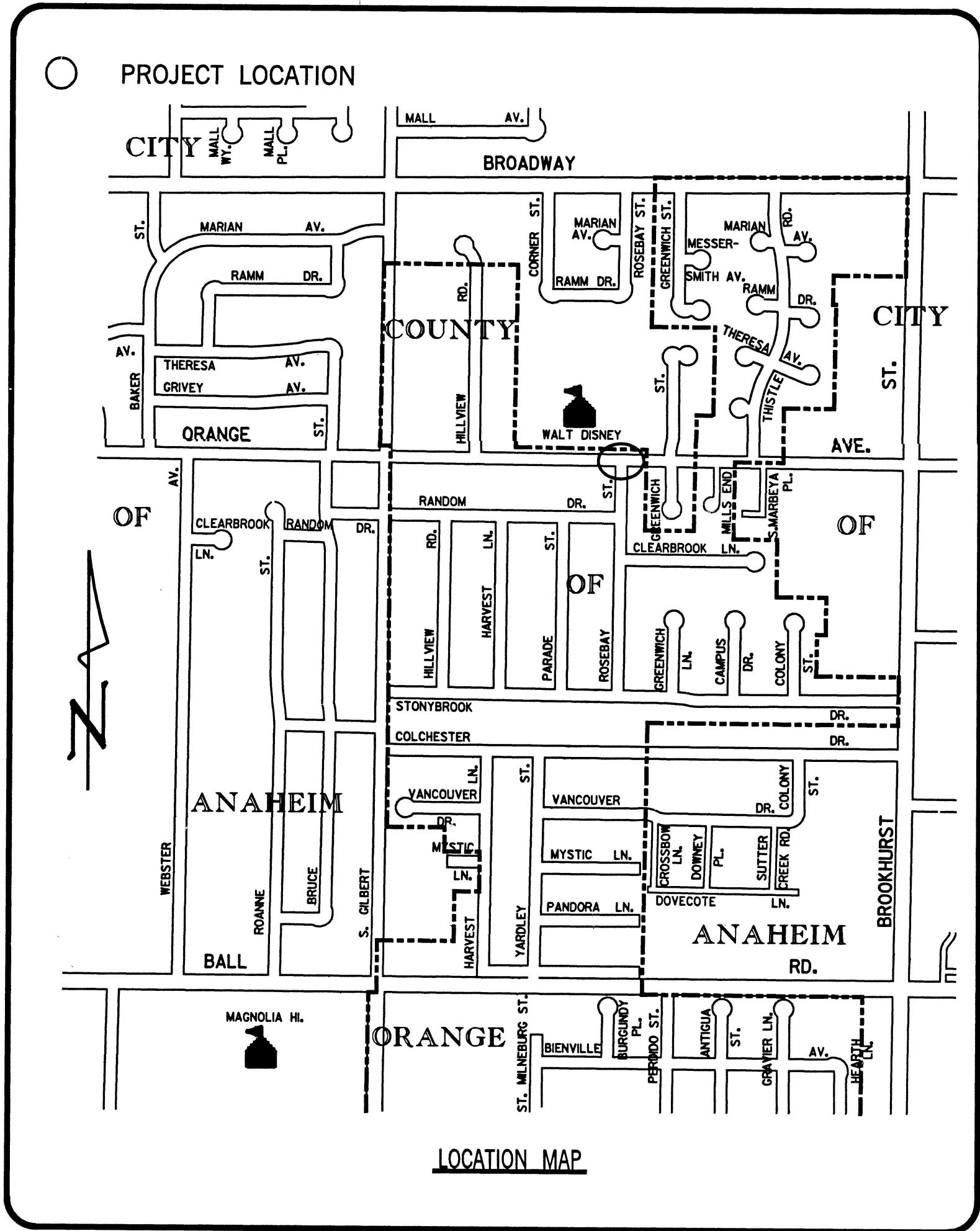


EPA FILE CORP. IRVINE, CA  
17160



VICINITY MAP



LOCATION MAP

# ORANGE COUNTY RESOURCES & DEVELOPMENT MANAGEMENT DEPARTMENT

SANTA ANA, CALIFORNIA  
BRYAN SPEEGLE, DIRECTOR

PLANS FOR THE CONSTRUCTION OF  
A TRAFFIC SIGNAL  
AT

## ORANGE AVENUE

AT

## ROSEBAY STREET

FUNDED BY: ROAD AND MEASURE M FUNDS

HOUSING AND COMMUNITY SERVICES

APPROVED: Paula Burrier-Lund 7/2/05 DATE  
PAULA BURRIER-LUND, DIRECTOR

APPROVED: Paul Lanning 7/7/05 DATE  
PAUL LANNING  
MANAGER, COMMUNITY REDEVELOPMENT

SUBMITTED: I.G. Ochoa 8/3/05 DATE  
I.G. OCHOA  
COUNTY TRAFFIC ENGINEER

RECOMMENDED: V.P. Rosales 8/3/05 DATE  
VINCENT P. ROSALES, MANAGER  
ROAD DIVISION

APPROVED: Herb Nakasone 8/3/05 DATE  
HERB NAKASONE  
CHIEF ENGINEER

NOT CONSTRUCTED  
SEE O.C. TRAFFIC COMMITTEE MINUTES  
DATED 10/20/05

INDEX OF SHEETS	
SHEET	DESCRIPTION
1	TITLE SHEET
2	ORANGE AVE. AT ROSEBAY ST. SIGNAL PLAN
3	DETAIL SHEET

UTILITY OWNER	CONTACT	PHONE NO.
CITY OF ANAHEIM - SEWER		(714) 765-6860
PACIFIC BELL	ANGIE HARVEY	(714) 666-5428
THE GAS COMPANY	BOB TRENTON	(714) 634-7287
SOUTHERN CALIFORNIA EDISON CO.	JEFF GILBERT	(714) 796-9920
CITY OF GARDEN GROVE - SEWER	SCOTT T. LOWE	(714) 741-5566
CITY OF ANAHEIM - WATER	DAVID ALLEN	(714) 765-5268
USA		(800) 422-4133

NO.	DESCRIPTION	SHT.	APPROVED	DATE
REVISIONS				

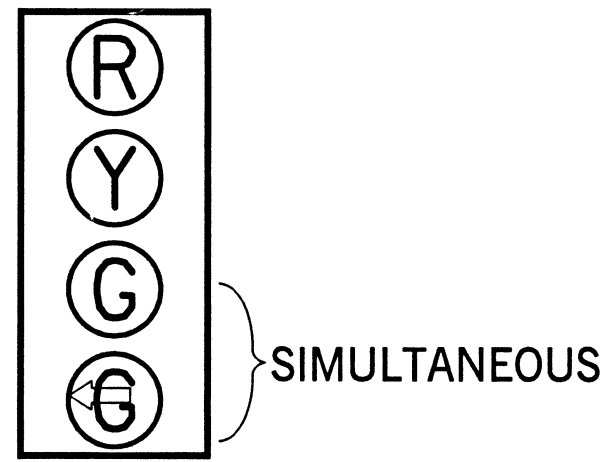
W. O. NO. ER10166

SHEET 1 OF 3

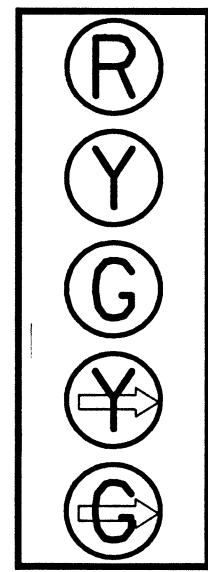




**DETAIL A**  
4-SECTION SIGNAL HEAD  
12" LENSES

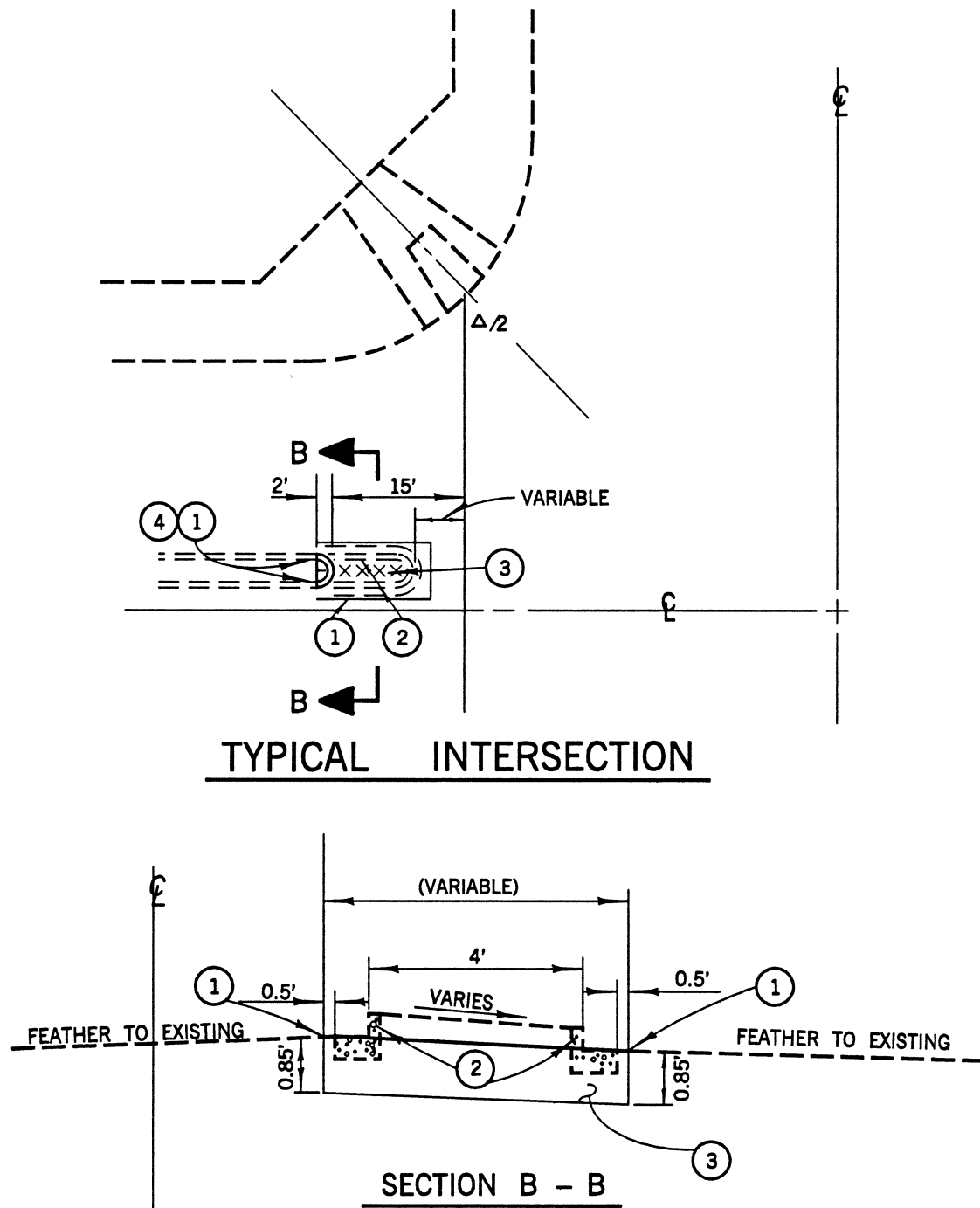


**DETAIL E**  
5-SECTION SIGNAL HEAD  
12" LENSES



△ - BAND STRAP OR BOLT FRAME WORK AT TOP, TO SIGNAL POLE, AS DIRECTED BY ENGINEER.  
- NO CAST ALUMINUM TERMINAL BLOCKS ALLOWED.

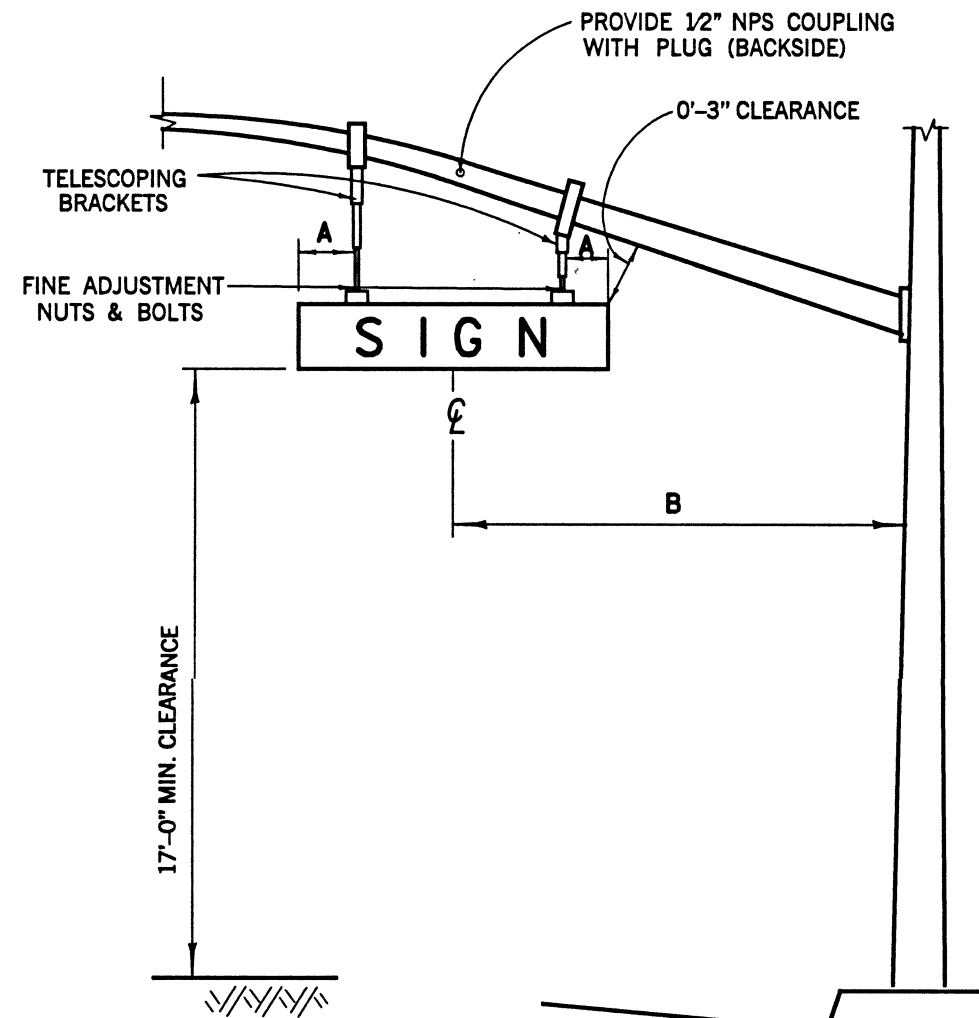
**DETAIL B**  
INTERSECTIONS RAISED MEDIAN



**NOTES - DETAILS B**

1. SAWCUT AND JOIN EXISTING
2. REMOVE CONCRETE
3. CONSTRUCT 0.85' AC OVER NATIVE SOIL
4. CONSTRUCT TYPE A1-B CONCRETE CURB PER APWA STD. PLAN 120-0.

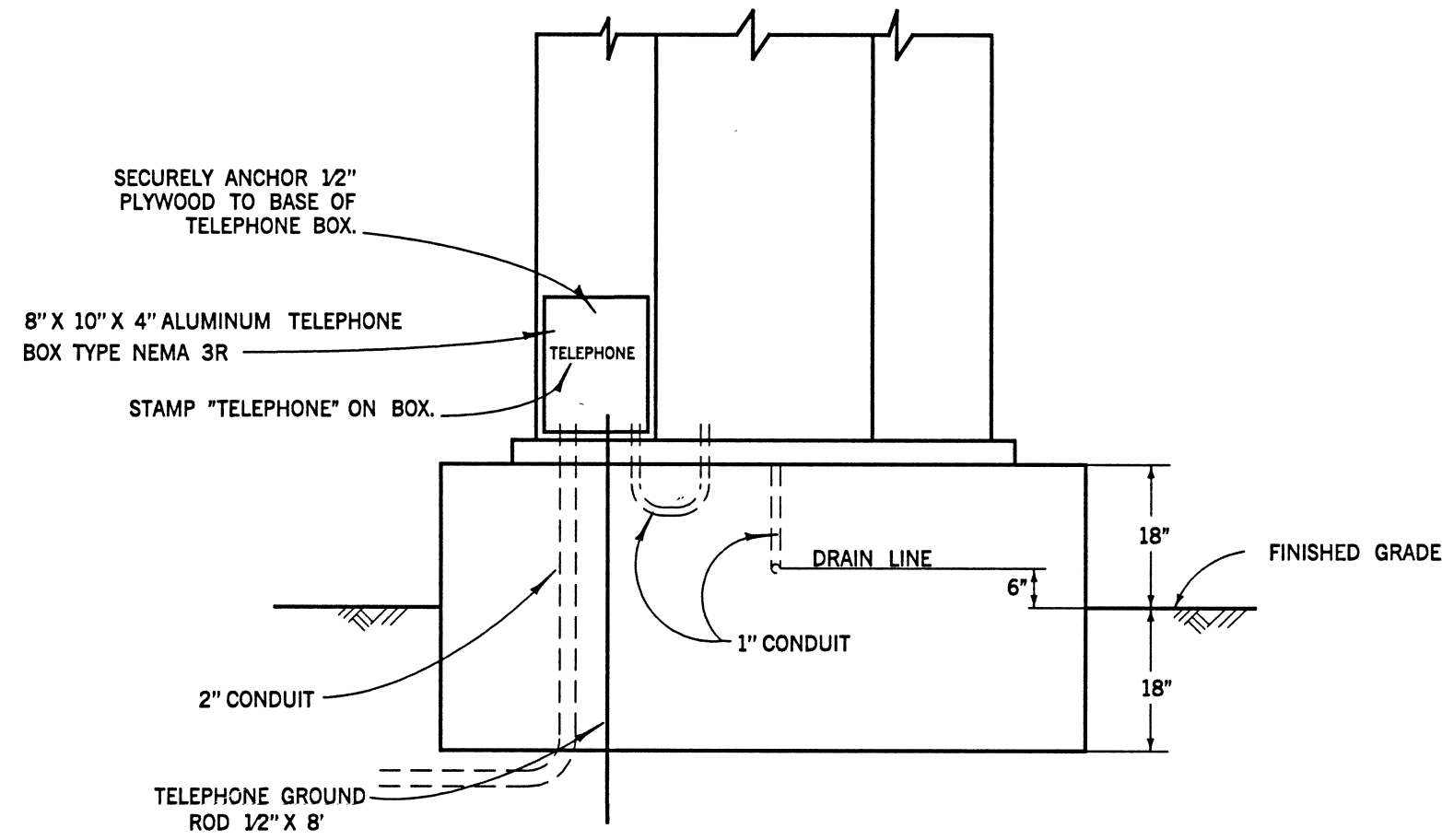
**DETAIL C**  
REFLECTORIZED STREET NAME SIGN COMPONENTS



**NOTES - DETAIL C**

- A 1'-6" (18"x72" SIGN), 2'-0" (18"x96" SIGN)  
B 10'-6" CENTERLINE OF SIGN TO FACE OF POLE

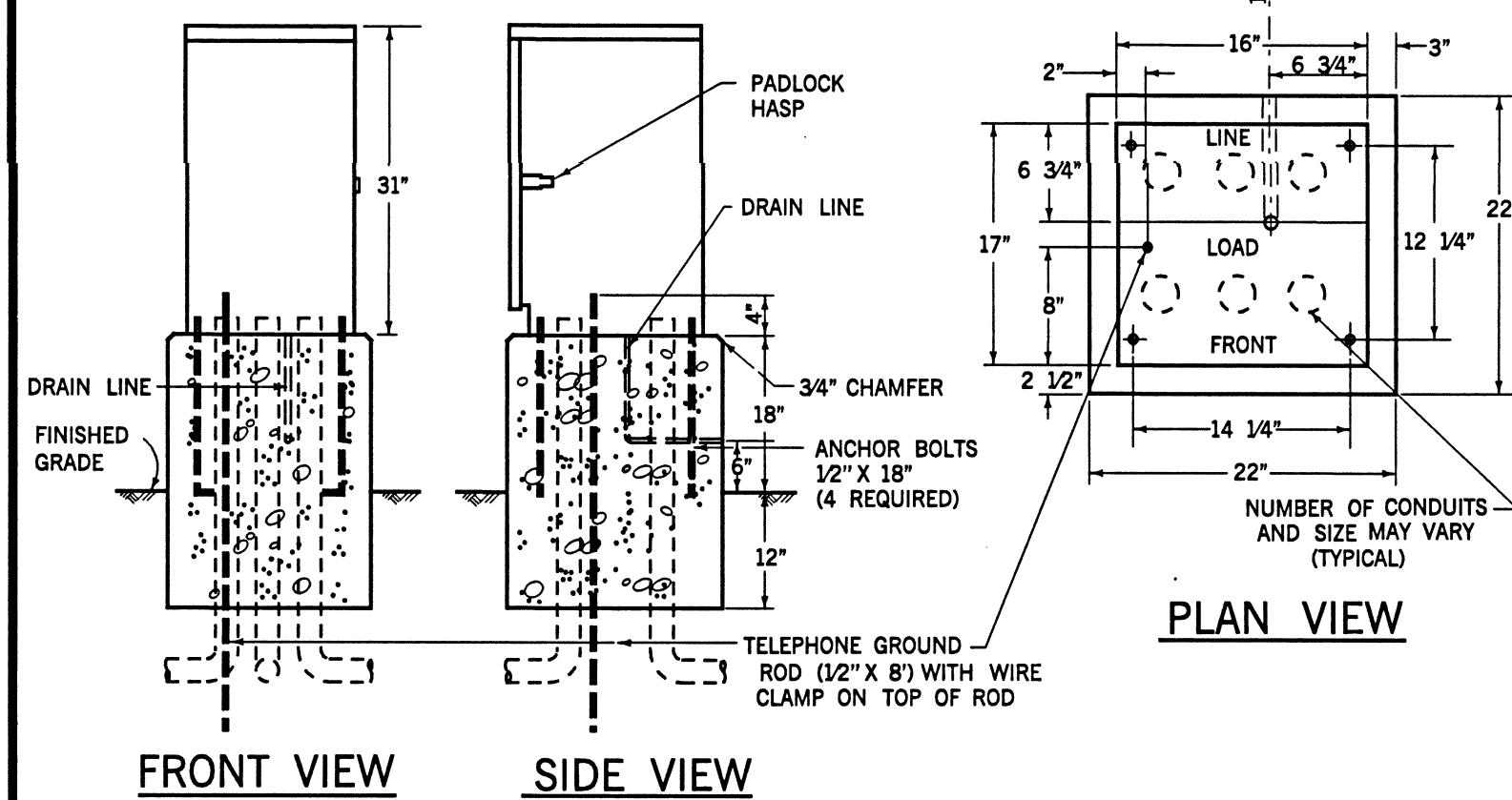
**DETAIL D**  
TELEPHONE SERVICE BOX



**GENERAL NOTES :**

1. ALL WORK, MATERIALS AND EQUIPMENT SHALL CONFORM TO THE REQUIREMENTS OF THE CALIFORNIA, DEPARTMENT OF TRANSPORTATION, STANDARD PLANS AND STANDARD SPECIFICATIONS DATED JULY 2002 AND JULY 2002 AND THE SPECIAL PROVISIONS FOR THIS PROJECT.
2. UTILITIES SHOWN ON THESE PLANS ARE CORRECT AND ACCURATE TO THE EXTENT OF AVAILABLE RECORDS AND KNOWLEDGE. THE CONTRACTOR, HOWEVER, IS REQUIRED TO ASCERTAIN THE EXACT LOCATION OF UNDERGROUND FACILITIES PRIOR TO DOING WORK THAT MAY DAMAGE SUCH FACILITIES OR INTERFERE WITH THEIR SERVICE.
3. 48 HOURS PRIOR TO BEGINNING OF CONSTRUCTION, THE CONTRACTOR SHALL CONTACT ORANGE COUNTY PUBLIC FACILITIES & RESOURCES DEPARTMENT FOR INSPECTION AT 567-7800.
4. THE ENGINEER SHALL APPROVE POLE AND LOOP DETECTION PLACEMENT IN THE FIELD PRIOR TO INSTALLATION.
5. ALL CONDUITS SHALL BE 2" UNLESS OTHERWISE NOTED.
6. ALL PULL BOXES SHALL BE #5 UNLESS OTHERWISE NOTED.
7. ALL SALVAGED EQUIPMENT SHALL BE DELIVERED UNDAMAGED, BY CONTRACTOR, TO THE ORANGE COUNTY YARD AT 1152 EAST FRUIT ST., SANTA ANA, CA. CONTRACTOR SHALL GIVE A 48-HOUR NOTICE TO THE COUNTY PRIOR TO THE DELIVERY DATE.
8. CONTRACTOR SHALL PROVIDE ALL NECESSARY TELEPHONE AND ELECTRICAL SERVICE LINES AND INTERCONNECT HOOK-UPS BETWEEN THE LOCAL CONTROLLER AND THE SYSTEM MASTER.
9. PEDESTRIAN INDICATIONS SHALL BE INTERNATIONAL SYMBOL.
10. PEDESTRIAN PUSH BUTTONS SHALL BE TYPE B WITH INTERNATIONAL SYMBOL PLATE.
11. ALL VEHICLE INDICATIONS SHALL BE 12" DIAMETER WITH BACKPLATES, GLASS REFLECTORS, AND GLASS LENSES, UNLESS SHOWN OTHERWISE.
12. CONTRACTOR SHALL POTHOLE CONFLICTING UTILITIES AS DIRECTED BY ENGINEER.
13. CONTRACTOR SHALL AVOID DAMAGING EXISTING UTILITIES. (SEE SPECIAL PROVISIONS).
14. DETECTOR LOOPS SHALL BE CIRCULAR 6' DIAMETER WITH 9' SPACING IN THE DIRECTION OF TRAVEL UNLESS OTHERWISE NOTED.
15. ALL DETECTOR CABLE HOMERUNS SHALL BE IN THE CROSSWALK AREA.
16. ALL DETECTOR LOOPS SHALL HAVE FOUR (4) TURNS.
17. ALL QUADRUPOLE DETECTOR LOOPS SHALL BE TWO (2-4-2) TURNS.
18. TRAFFIC CONTROLLER CABINET FOUNDATION SHALL BE 18" ABOVE AND BELOW FINISHED GRADE (SEE DETAIL D).
19. INSTALL "CABINET DOOR OPEN" CIRCUIT IN CONTROLLER CABINET PER MANUFACTURE'S SPECIFICATIONS.
20. CONCRETE REPLACEMENT TO MATCH EXISTING.

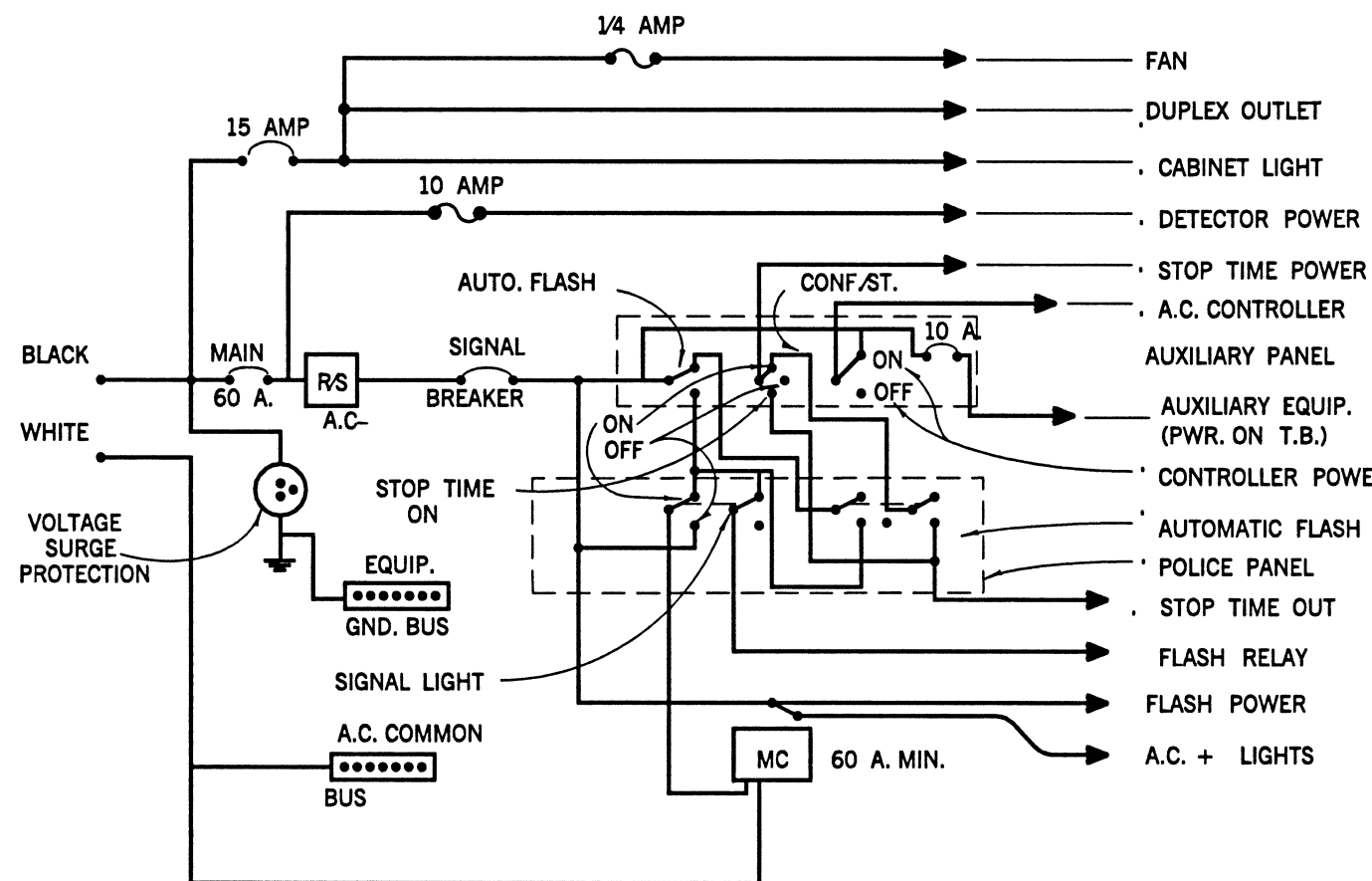
**DETAIL F**  
INTERCONNECT SPICE CABINET



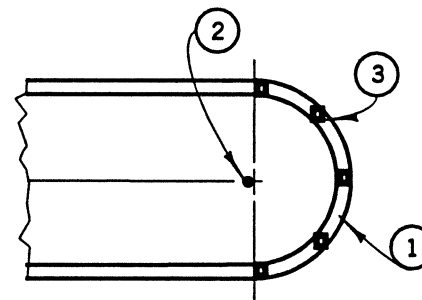
**NOTES - DETAIL F**

1. FOUNDATION TO BE 22" X 22". ANCHOR BOLT PLACEMENT PER CABINET MFG. TEMPLATE.
2. ENCLOSURE SHALL BE ALUMINUM AND FURNISHED WITH A DETACHABLE MOUNTING BASE.
3. ALL FACTORY INSTALLED COMPONENTS SHALL BE U.L. LISTED OR PER PUBLISHED N.E.C. STANDARDS.
4. A 3/4" CONSTRUCTION GRADE PLYWOOD PANEL SHALL BE FASTENED TO THE REAR WALL. PANEL SHALL BE 12" X 24" AND SHALL HAVE A No. M1-25 AND R-841 STANDOFF FASTENED IN THE CENTER OF THE PANEL.
5. ENCLOSURE FINISH SHALL CONFORM TO A.S.T.M. B-117. PAINT TO BE APPLIED TO EXTERNAL AND INTERNAL CABINET SURFACE SHALL BE WHITE ANTI-GRAFFITI CARDINAL'S 6409 G SERIES OR APPROVED EQUAL ANTI-GRAFFITI PAINT SHALL BE APPLIED TO CABINET AT THE TIME OF MANUFACTURE.
6. PROVIDE 1 1/2" CONDUIT FOR FUTURE 115 VAC SERVICE.
7. PROVIDE GROUND BUS INSIDE SPICE CABINET.

**DETAIL G**  
CONTROLLER CABINET WIRING



**DETAIL H**  
RAISED MEDIAN MARKING



**NOTES - DETAIL H**

1. PAINT MEDIAN NOSE WITH HIGHLY REFLECTIVE PREMIXED WHITE TRAFFIC PAINT WITH GLASS BEADS.
2. INSTALL FLEXIBLE VERTICAL TYPE K MARKER, R7, R10 OR TYPE N-1 ON TELESAR POST AS INDICATED ON PLAN.
3. INSTALL YELLOW REFLECTIVE PAVEMENT MARKERS ON TOP SURFACE OF MEDIAN CURB NOSE AT 2' C.C. SPACING (MINIMUM 5 MARKERS). PLACE REFLECTIVE SURFACE OF MARKERS PERPENDICULAR TO C OF ROADWAY.

ORANGE COUNTY PUBLIC FACILITIES & RESOURCES DEPARTMENT			SIGNAL DETAIL SHEET	
3-29-88	4-4-88	12-8-88	11-18-91	6-7-93
1-1-97	3-4-97	8-31-98	ADDED NOTES IN DETAIL E	
MARK	DATE	DESCRIPTION		PREPARED UNDER
DESIGNED		CHECKED		SUPERVISION
DRAWN		DATE		SCALE
		NOT TO SCALE		DATE
		APRIL 03		W. O. NO.
		ER10156		3
				OF