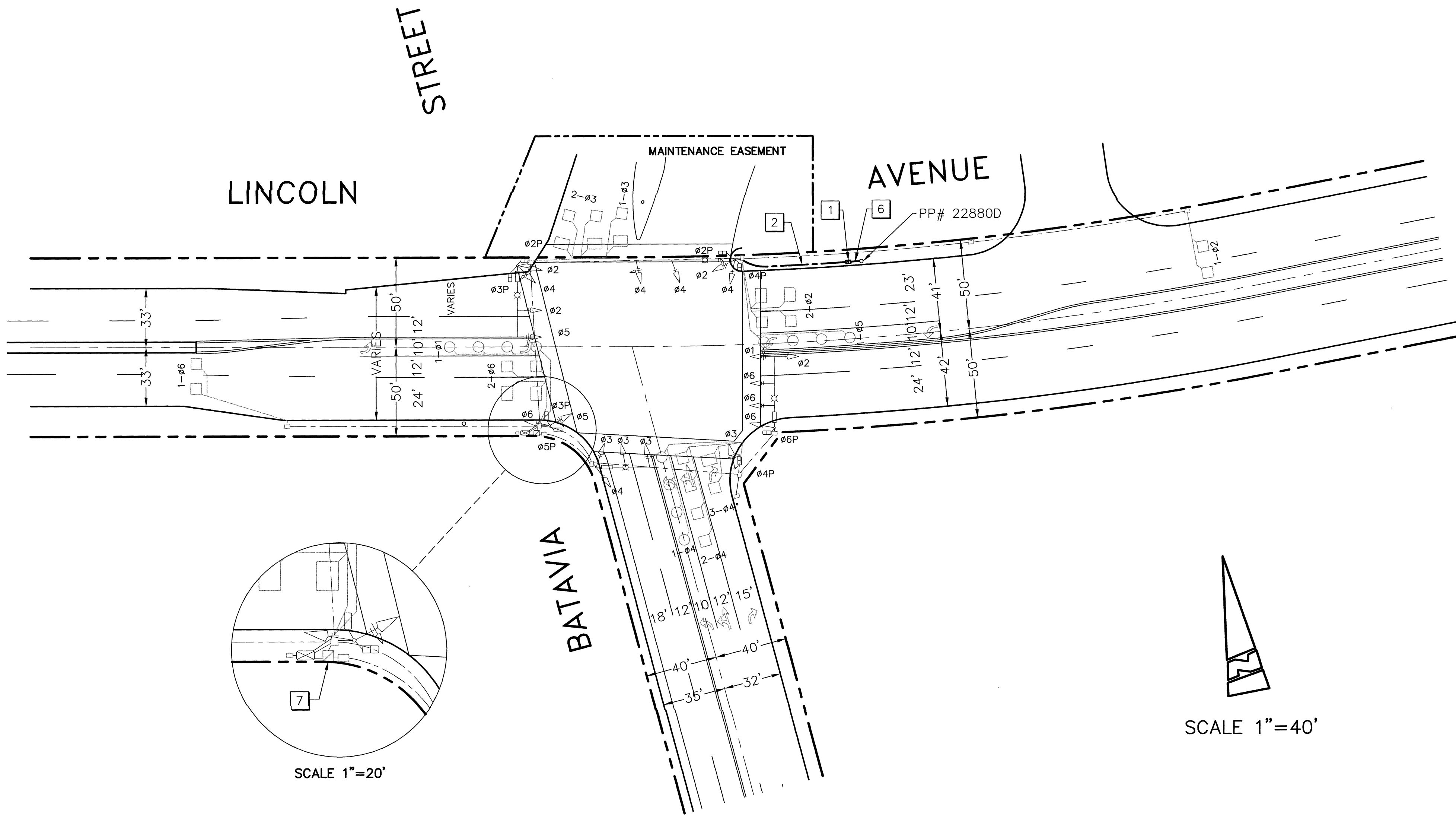


EAST FILE CORP. IRVINE, CA
L351.1

CONSTRUCTION NOTES:

- 1 INSTALL "TYPE B" TELEPHONE DEMARCATION CABINET (TDM) PER CALTRANS STD PLAN NO. ES-3E.
- 2 INSTALL 2" CONDUIT FROM TDM TO TRAFFIC SIGNAL PULLBOX.
PULL 2 PAIR #22 TELEPHONE CABLE FROM TDM TO CONTROLLER CABINET.
- 6 INSTALL 2" PVC CONDUIT AND 10' RISER TO POWERPOLE. COORDINATE WITH PAC BELL REPRESENTATIVE, MR. STEVEN WIGGS, AT (714) 237-6950.
- 7 INSTALL 30A BREAKER IN EXISTING "TYPE III" SERVICE CABINET FOR TDM POWER. PULL 2 #12 CONDUCTORS FROM SERVICE CABINET TO TDM TO PROVIDE 120V SERVICE.




SCALE 1"=40'



5-2-00

NOTE: ALL EQUIPMENT SALVAGED FROM THIS LOCATION SHALL BE DELIVERED TO COUNTY YARD AT 1192 E. FRUIT ST., SANTA ANA, (714) 567-7866.

ORANGE COUNTY PUBLIC FACILITIES AND RESOURCES DEPARTMENT	
SIGNAL MODIFICATION PLAN	
APPROVED:  DATE: 5/2/00	APPROVED: _____ DATE: _____

TRAFFIC SIGNAL MODIFICATION PLAN LINCOLN AVENUE AT BATAVIA STREET	
CITY OF ANAHEIM PUBLIC WORKS	ENGINEERING DEPARTMENT

SHEET 4 OF 5
PLAN NUMBER 23153

P&D Consultants, Inc.
999 Town & Country Road, Suite 400
Orange, CA 92868

REVISIONS				REFERENCES			
NO.	INIT.	DESCRIPTION	APPROVED BY	DATE	FIELD BOOKS	PAGES	BENCH MARK NO. ELEVATION

FOR NOTES TO CONTRACTOR SEE PLAN
FOR STANDARD DETAILS SEE
PLANS FOR THESE IMPROVEMENTS

SCALE: 1"=40'	DATE: 4/00
DRAWN BY: C. VIANA	CHECKED BY: S. BARNHART
APPROVED: _____	PRINCIPAL TRAFFIC ENGINEER
APPROVED: _____	FILE SHEET NO. 23153
	FOR APPROVALS