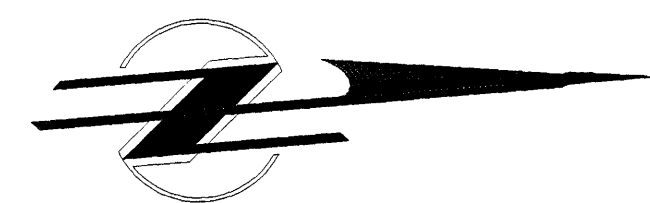


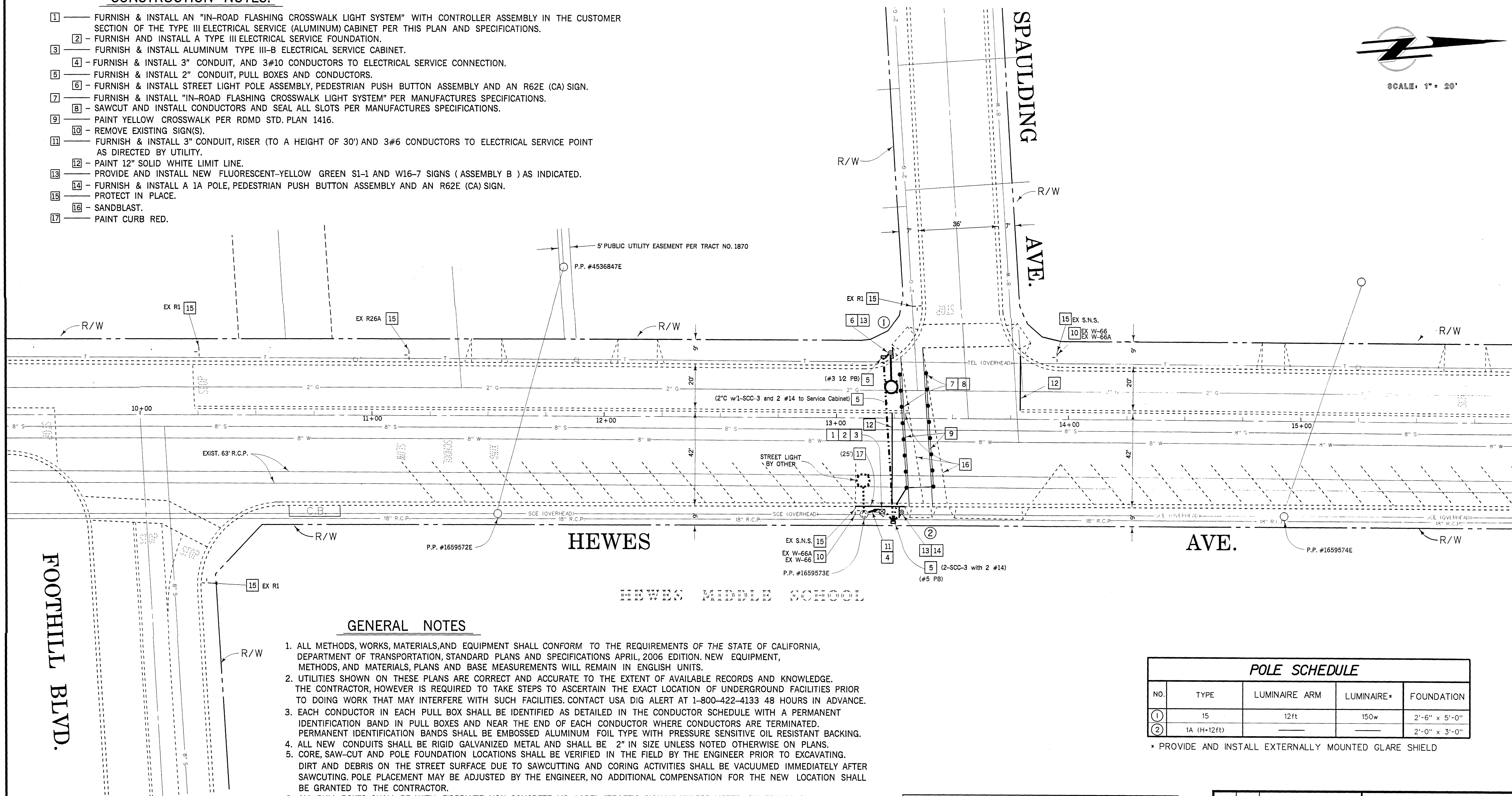
SHEET 1 OF 3

CONSTRUCTION NOTES:

- 1 FURNISH & INSTALL AN "IN-ROAD FLASHING CROSSWALK LIGHT SYSTEM" WITH CONTROLLER ASSEMBLY IN THE CUSTOMER SECTION OF THE TYPE III ELECTRICAL SERVICE (ALUMINUM) CABINET PER THIS PLAN AND SPECIFICATIONS.
- 2 FURNISH AND INSTALL A TYPE III ELECTRICAL SERVICE FOUNDATION.
- 3 FURNISH & INSTALL ALUMINUM TYPE III-B ELECTRICAL SERVICE CABINET.
- 4 FURNISH & INSTALL 3" CONDUIT, AND 3#10 CONDUCTORS TO ELECTRICAL SERVICE CONNECTION.
- 5 FURNISH & INSTALL 2" CONDUIT, PULL BOXES AND CONDUCTORS.
- 6 FURNISH & INSTALL STREET LIGHT POLE ASSEMBLY, PEDESTRIAN PUSH BUTTON ASSEMBLY AND AN R62E (CA) SIGN.
- 7 FURNISH & INSTALL "IN-ROAD FLASHING CROSSWALK LIGHT SYSTEM" PER MANUFACTURES SPECIFICATIONS.
- 8 SAWCUT AND INSTALL CONDUCTORS AND SEAL ALL SLOTS PER MANUFACTURES SPECIFICATIONS.
- 9 PAINT YELLOW CROSSWALK PER RDMD STD. PLAN 1416.
- 10 REMOVE EXISTING SIGN(S).
- 11 FURNISH & INSTALL 3" CONDUIT, RISER (TO A HEIGHT OF 30') AND 3#6 CONDUCTORS TO ELECTRICAL SERVICE POINT AS DIRECTED BY UTILITY.
- 12 PAINT 12" SOLID WHITE LIMIT LINE.
- 13 PROVIDE AND INSTALL NEW FLUORESCENT-YELLOW GREEN S1-1 AND W16-7 SIGNS (ASSEMBLY B) AS INDICATED.
- 14 FURNISH & INSTALL A 1A POLE, PEDESTRIAN PUSH BUTTON ASSEMBLY AND AN R62E (CA) SIGN.
- 15 PROTECT IN PLACE.
- 16 SANDBLAST.
- 17 PAINT CURB RED.



SCALE: 1" = 20'



GENERAL NOTES

1. ALL METHODS, WORKS, MATERIALS, AND EQUIPMENT SHALL CONFORM TO THE REQUIREMENTS OF THE STATE OF CALIFORNIA, DEPARTMENT OF TRANSPORTATION, STANDARD PLANS AND SPECIFICATIONS APRIL, 2006 EDITION. NEW EQUIPMENT, METHODS, AND MATERIALS, PLANS AND BASE MEASUREMENTS WILL REMAIN IN ENGLISH UNITS.
2. UTILITIES SHOWN ON THESE PLANS ARE CORRECT AND ACCURATE TO THE EXTENT OF AVAILABLE RECORDS AND KNOWLEDGE. THE CONTRACTOR, HOWEVER, IS REQUIRED TO TAKE STEPS TO ASCERTAIN THE EXACT LOCATION OF UNDERGROUND FACILITIES PRIOR TO DOING WORK THAT MAY INTERFERE WITH SUCH FACILITIES. CONTACT USA DIG ALERT AT 1-800-422-4133 48 HOURS IN ADVANCE.
3. EACH CONDUCTOR IN EACH PULL BOX SHALL BE IDENTIFIED AS DETAILED IN THE CONDUCTOR SCHEDULE WITH A PERMANENT IDENTIFICATION BAND IN PULL BOXES AND NEAR THE END OF EACH CONDUCTOR WHERE CONDUCTORS ARE TERMINATED. PERMANENT IDENTIFICATION BANDS SHALL BE EMBOSSED ALUMINUM FOIL TYPE WITH PRESSURE SENSITIVE OIL RESISTANT BACKING.
4. ALL NEW CONDUITS SHALL BE RIGID GALVANIZED METAL AND SHALL BE 2" IN SIZE UNLESS NOTED OTHERWISE ON PLANS.
5. CORE, SAW-CUT AND POLE FOUNDATION LOCATIONS SHALL BE VERIFIED IN THE FIELD BY THE ENGINEER PRIOR TO EXCAVATING. DIRT AND DEBRIS ON THE STREET SURFACE DUE TO SAWCUTTING AND CORING ACTIVITIES SHALL BE VACUUMED IMMEDIATELY AFTER SAWCUTTING. POLE PLACEMENT MAY BE ADJUSTED BY THE ENGINEER, NO ADDITIONAL COMPENSATION FOR THE NEW LOCATION SHALL BE GRANTED TO THE CONTRACTOR.
6. ALL PULL BOXES SHALL BE WITH FIBERLYTE NON-CONCRETE LID LABEL "TRAFFIC SIGNAL" UNLESS NOTED OTHERWISE ON PLANS.
7. ALL CONDUITS SHALL BE INSTALLED AT A MINIMUM DEPTH OF 30".
8. TRENCHING IN STREET PAVEMENT SHALL NOT BE ALLOWED FOR THIS PROJECT. HOWEVER, IN SIDEWALK AREAS, CONTRACTOR MAY TRENCH OR BORE SUCH THAT SIDEWALK IS REPLACED IN KIND, SCORE MARK TO SCORE MARK.
9. MAINTAIN 3.0m (10ft) CLEARANCE FROM EXISTING OVERHEAD FACILITIES IN THE AREA AT ALL TIMES.
10. REPAINT EXISTING STRIPING DISTURBED BY THE INSTALLATION OF IN-PAVEMENT DEVICES, SAW-CUTTING, SANDBLASTING, AND/OR OTHER WORK TO THE SATISFACTION OF THE ENGINEER.
11. ALL EXISTING CROSSWALKS AND LEGENDS ARE YELLOW UNLESS OTHERWISE NOTED.
12. ALL EXISTING LIMIT LINES ARE WHITE UNLESS OTHERWISE NOTED.
13. PROTECT IN-PLACE EXISTING SIGNS UNLESS NOTED OTHERWISE.
14. CONTRACTOR SHALL FURNISH ALL MATERIAL AND EQUIPMENT REQUIRED.

POLE SCHEDULE

NO.	TYPE	LUMINAIRE ARM	LUMINAIRE*	FOUNDATION
1	15	12ft	150w	2'-6" x 5'-0"
2	1A (H=12ft)			2'-0" x 3'-0"

* PROVIDE AND INSTALL EXTERNALLY MOUNTED GLARE SHIELD

LEGEND

- = IN-ROADWAY FLASHING LIGHT UNIT
- = STREET LIGHT ASSEMBLY
- ⊞ = FLASHING LIGHT CONTROLLER ASSEMBLY AND SERVICE CABINET
- = CONDUIT

1/2 0 1 2
3 inches on original drawing

ORANGE COUNTY
RESOURCES & DEVELOPMENT MANAGEMENT DEPARTMENT

HEWES AVENUE
AT
SPAULDING AVENUE

INSTALLATION OF A CROSSWALK
FLASHING LIGHT SYSTEM

MARK	DATE	DESCRIPTION	PREPARED BY	SUPERVISOR	DATE	SCALE	DATE	CITY	STATE
REVISIONS									
DESIGNED		L. ABAD / K.N. / L. LIN				SCALE			
DRAWN		KY. NGUYEN	CHECKED	L. ABAD		AS SHOWN			

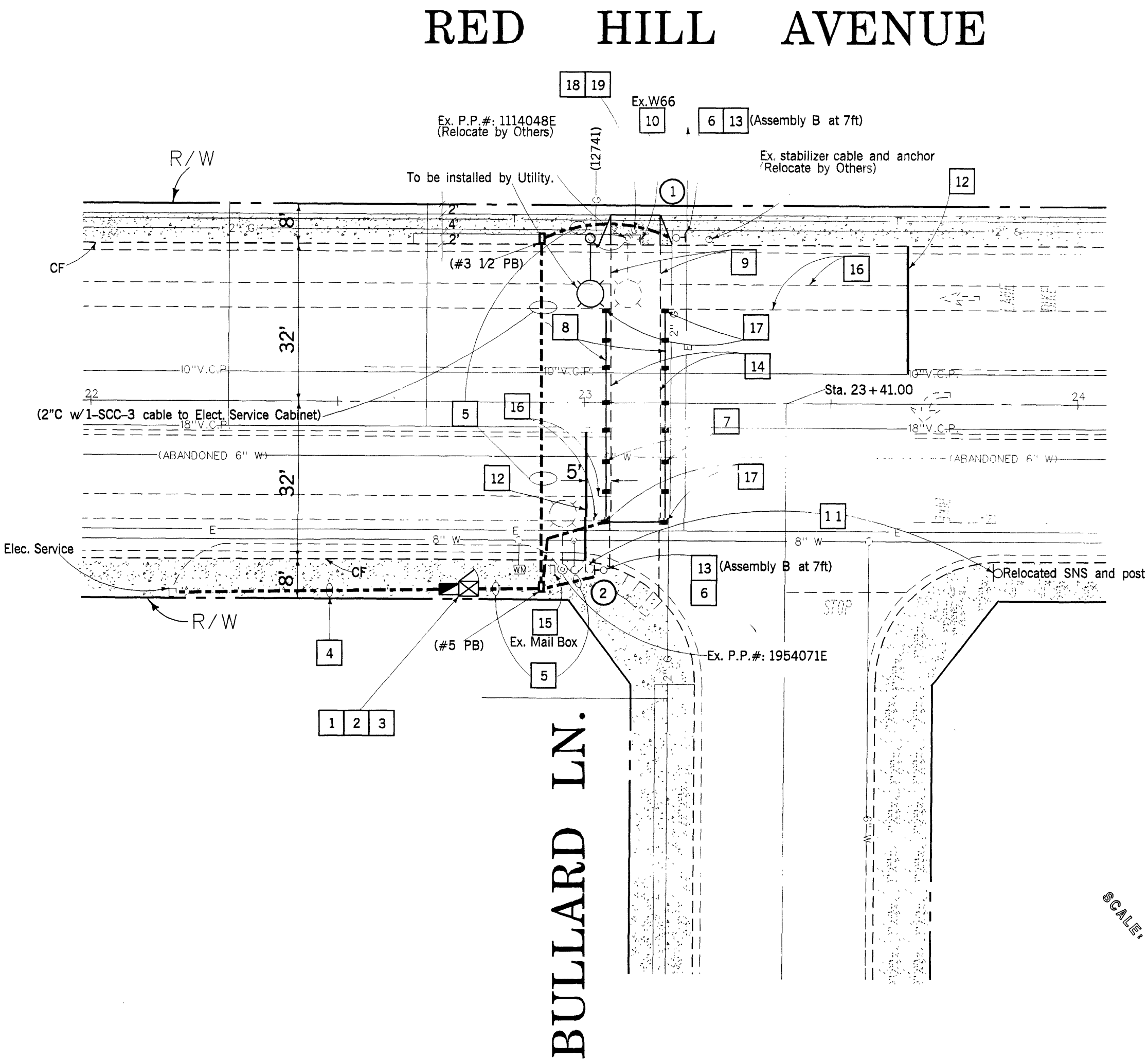
SHEET
2
OF 3

GENERAL NOTES

1. ALL METHODS, WORKS, MATERIALS, AND EQUIPMENT SHALL CONFORM TO THE REQUIREMENTS OF THE STATE OF CALIFORNIA, DEPARTMENT OF TRANSPORTATION, STANDARD PLANS AND SPECIFICATIONS APRIL, 2006 EDITION. NEW EQUIPMENT, METHODS, AND MATERIALS, PLANS AND BASE MEASUREMENTS WILL REMAIN IN ENGLISH UNITS.
2. UTILITIES SHOWN ON THESE PLANS ARE CORRECT AND ACCURATE TO THE EXTENT OF AVAILABLE RECORDS AND KNOWLEDGE. THE CONTRACTOR, HOWEVER, IS REQUIRED TO TAKE STEPS TO ASCERTAIN THE EXACT LOCATION OF UNDERGROUND FACILITIES PRIOR TO DOING WORK THAT MAY INTERFERE WITH SUCH FACILITIES. CONTACT USA DIG ALERT AT 1-800-422-4133 48 HOURS IN ADVANCE.
3. EACH CONDUCTOR IN EACH PULL BOX SHALL BE IDENTIFIED AS DETAILED IN THE CONDUCTOR SCHEDULE WITH A PERMANENT IDENTIFICATION BAND IN PULL BOXES AND NEAR THE END OF EACH CONDUCTOR WHERE CONDUCTORS ARE TERMINATED. PERMANENT IDENTIFICATION BANDS SHALL BE EMBOSSED ALUMINUM FOIL TYPE WITH PRESSURE SENSITIVE OIL RESISTANT BACKING.
4. ALL NEW CONDUITS SHALL BE RIGID GALVANIZED METAL AND SHALL BE 2" IN SIZE UNLESS NOTED OTHERWISE ON PLANS.
5. CORE, SAW-CUT AND POLE FOUNDATION LOCATIONS SHALL BE VERIFIED IN THE FIELD BY THE ENGINEER PRIOR TO EXCAVATING. DIRT AND DEBRIS ON THE STREET SURFACE DUE TO SAWCUTTING AND CORING ACTIVITIES SHALL BE VACUUMED IMMEDIATELY AFTER SAWCUTTING. POLE PLACEMENT MAY BE ADJUSTED BY THE ENGINEER, NO ADDITIONAL COMPENSATION FOR THE NEW LOCATION SHALL BE GRANTED TO THE CONTRACTOR.
6. ALL PULL BOXES SHALL BE WITH FIBERLYTE NON-CONCRETE LID LABEL "TRAFFIC SIGNAL" UNLESS NOTED OTHERWISE ON PLANS.
7. ALL CONDUITS SHALL BE INSTALLED AT A MINIMUM DEPTH OF 30".
8. TRENCHING IN STREET PAVEMENT SHALL NOT BE ALLOWED FOR THIS PROJECT. HOWEVER, IN SIDEWALK AREAS, CONTRACTOR MAY TRENCH OR BORE SUCH THAT SIDEWALK IS REPLACED IN KIND, SCORE MARK TO SCORE MARK.
9. MAINTAIN 3.0m (10ft) CLEARANCE FROM EXISTING OVERHEAD FACILITIES IN THE AREA AT ALL TIMES.
10. REPAINT EXISTING STRIPING DISTURBED BY THE INSTALLATION OF IN-PAVEMENT DEVICES, SAW-CUTTING, SANDBLASTING, AND/OR OTHER WORK TO THE SATISFACTION OF THE ENGINEER.
11. ALL EXISTING CROSSWALKS AND LEGENDS ARE YELLOW UNLESS OTHERWISE NOTED.
12. ALL EXISTING LIMIT LINES ARE WHITE UNLESS OTHERWISE NOTED.
13. PROTECT IN-PLACE EXISTING SIGNS UNLESS NOTED OTHERWISE.
14. CONTRACTOR SHALL FURNISH ALL MATERIAL AND EQUIPMENT REQUIRED.

CONSTRUCTION NOTES:

- 1 — FURNISH & INSTALL AN "IN-ROAD FLASHING CROSSWALK LIGHT SYSTEM" WITH CONTROLLER ASSEMBLY INSTALLED IN THE CUSTOMER SECTION OF THE TYPE III ELECTRICAL SERVICE CABINET PER THIS PLAN AND SPECIFICATIONS.
- 2 — FURNISH AND INSTALL A TYPE III ELECTRICAL SERVICE FOUNDATION.
- 3 — FURNISH & INSTALL ALUMINUM TYPE III-B ELECTRICAL SERVICE CABINET (ES2E).
- 4 — FURNISH & INSTALL 3" CONDUIT, 3 #10 CONDUCTORS AND PULL ROPE TO ELECTRICAL SERVICE.
- 5 — FURNISH & INSTALL 2" CONDUIT, PULL BOXES AND CONDUCTORS.
- 6 — FURNISH & INSTALL P.P.B POST AND PEDESTRIAN PUSH BUTTON ASSEMBLY WITH A R62E (CA) SIGN PER SPECIAL PROVISIONS.
- 7 — FURNISH & INSTALL "IN-ROAD FLASHING CROSSWALK LIGHT SYSTEM" PER PRODUCT SPECIFICATIONS AND SPECIAL PROVISIONS.
- 8 — SAWCUT AND INSTALL CONDUCTORS AND SEAL ALL SLOTS PER PRODUCT SPECIFICATIONS.
- 9 — REPAINT EXISTING YELLOW CROSSWALK PER RDMD STD. PLAN 1416.
- 10 — REMOVE EXISTING SIGN AND POST.
- 11 — RELOCATE SIGNS AS SHOWN.
- 12 — PAINT 12" SOLID WHITE LIMIT LINE.
- 13 — PROVIDE AND INSTALL NEW FLUORESCENT-YELLOW GREEN S1-1 AND W16-7 SIGNS (ASSEMBLY B OR ASSEMBLY A) ON TELESAR POST AS INDICATED.
- 14 — REMOVE EXISTING RPM'S ALONG CROSSWALK.
- 15 — PROTECT IN PLACE.
- 16 — SANDBLAST
- 17 — INSTALL "IN-ROADWAY FLASHING LIGHT UNIT" ON THE OUTSIDE EDGE OF BIKE LANE STRIPE OR AS DIRECTED BY ENGINEER.
- 18 — SAWCUT AND REMOVE AC CURB, GUTTER AND SIDEWALK
- 19 — CONSTRUCT ACCESS RAMP PER RDMD STD. 1115 (TYPE 3)



POLE SCHEDULE		
NO.	TYPE	POLE HEIGHT
1	P.P.B.P.	50 INCHES
2	P.P.B.P.	50 INCHES

LEGEND	
	= IN-ROADWAY FLASHING LIGHT UNIT
	= STREET LIGHT ASSEMBLY
	= FLASHING LIGHT CONTROLLER ASSEMBLY AND SERVICE CABINET
	= CONDUIT

ORANGE COUNTY SOURCES & DEVELOPMENT MANAGEMENT DEPARTMENT	
RED HILL AVENUE AT BULLARD LANE INSTALLATION OF AN IN-ROADWAY FLASHING CROSSWALK LIGHT SYSTEM	
MARK	DATE DESCRIPTION
REVISIONS	
DESIGNED	LLIN
SUPERVISION OF	LLIN
DRAWN	LLIN
CHECKED	L.ABAD
PREPARED UNDER SUPERVISION OF DATE SCALE 1"=20'	
DATE FEB 17 2009 CIVIL OF CALIF.	
SHEET 3 OF 3	