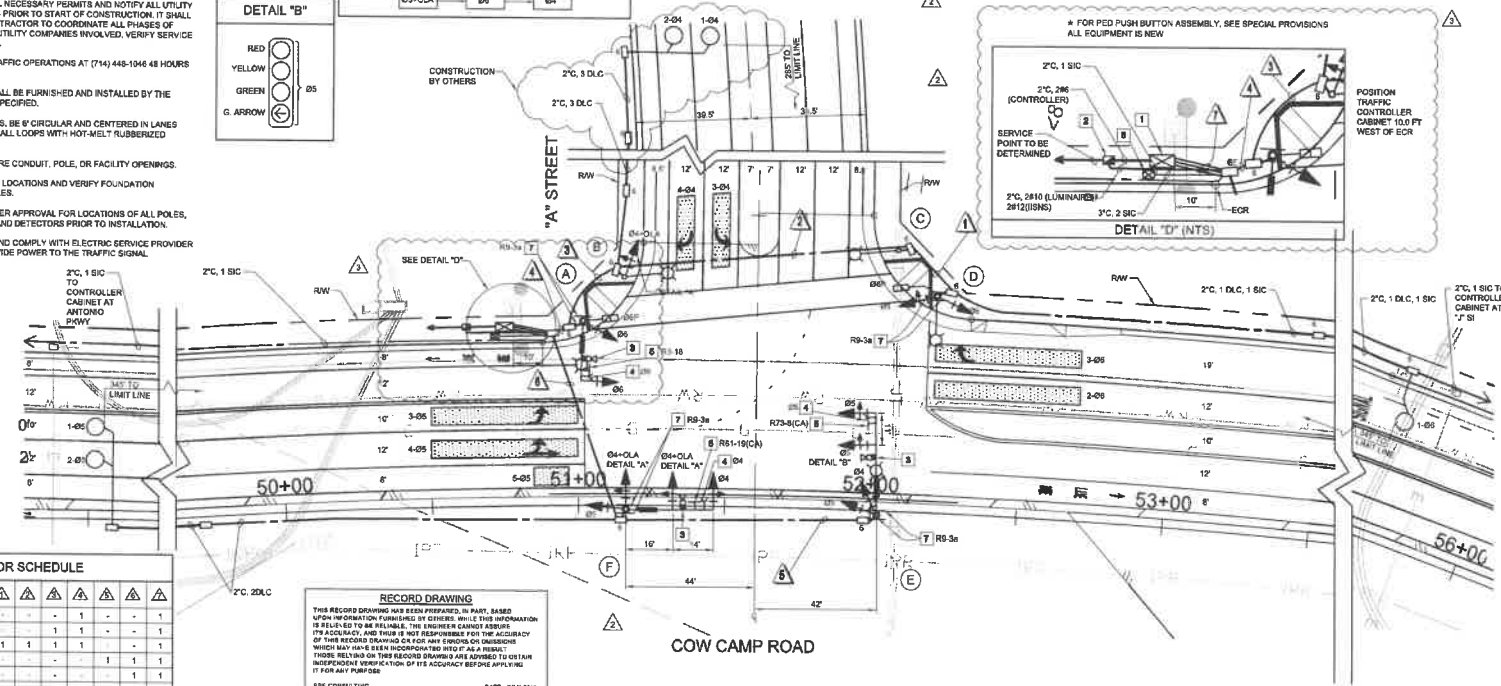
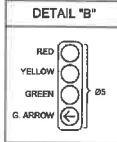
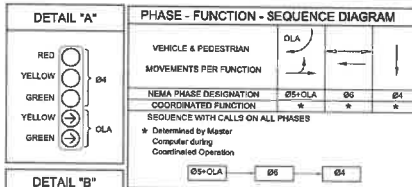
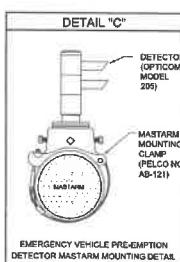


1. CONTRACTOR SHALL OBTAIN AND THOROUGHLY READ THE TRAFFIC SIGNAL SPECIAL PROVISIONS FOR THIS PROJECT PRIOR TO ORDERING EQUIPMENT, AND ADDITIONAL COSTS FOR EQUIPMENT AND DELIVERY COSTS RELATED TO UNSPECIFIED EQUIPMENT.
2. ALL WORK, MATERIALS AND EQUIPMENT SHALL CONFORM TO THE REQUIREMENTS OF THE STATE OF CALIFORNIA DEPT. OF TRANSPORTATION STANDARD PLANS AND STANDARD SPECIFICATIONS DATED 2010, AND THE SPECIAL PROVISIONS FOR THIS PROJECT.
3. UTILITIES SHOWN ON THESE PLANS ARE CORRECT AND ACCURATE TO THE EXTENT OF AVAILABLE RECORDS AND KNOWLEDGE. THE CONTRACTOR, HOWEVER IS REQUIRED TO ASCERTAIN THE EXACT LOCATION OF UNDERGROUND FACILITIES PRIOR TO ANY WORK THAT MAY DAMAGE SUCH FACILITIES OR INTERFERE WITH THEIR SERVICE.
4. THE CONTRACTOR SHALL OBTAIN ALL NECESSARY PERMITS AND NOTIFY ALL UTILITY COMPANIES A MINIMUM OF 48 HOURS PRIOR TO START OF CONSTRUCTION. IT SHALL BE THE CONTRACTOR'S RESPONSIBILITY TO DETERMINE THE PHASES OF CONSTRUCTION WITH THE VARIOUS UTILITY COMPANIES INVOLVED. VERIFY SERVICE LOCATION PRIOR TO CONSTRUCTION.
5. THE CONTRACTOR SHALL NOTIFY TRAFFIC OPERATIONS AT (714) 464-1486 48 HOURS PRIOR TO START OF CONSTRUCTION.
6. ALL TRAFFIC SIGNAL EQUIPMENT SHALL BE FURNISHED AND INSTALLED BY THE CONTRACTOR UNLESS OTHERWISE SPECIFIED.
7. ALL NEW LIGHTS SHALL HAVE 4 STUDS, BE CIRCULAR AND CENTERED IN LANES UNLESS OTHERWISE SPECIFIED. INSTALL LIGHTS WITH HOT-HEAT RUBBERIZED ASPHALT SEALANT.
8. COVER, SECURE AND SEAL ALL FUTURE CUTOFF, POLE, OR FACILITY OPENINGS.
9. CONTRACTOR SHALL POT-HOLE POLE LOCATIONS AND VERIFY FOUNDATION LOCATIONS PRIOR TO ORDERING POLES.
10. CONTRACTOR SHALL OBTAIN ENGINEER APPROVAL FOR LOCATIONS OF ALL POLES, CABINETS, CONDUITS, PULP BOXES, AND DETECTORS PRIOR TO INSTALLATION.
11. CONTRACTOR SHALL COORDINATE AND COMPLY WITH ELECTRIC SERVICE PROVIDER REQUIREMENTS AS NEEDED TO PROVIDE POWER TO THE TRAFFIC SIGNAL INSTALLATION.



■ CONDUCTOR SCHEDULE									
AWG OR CABLE	WIRE TYPE	CIRCUIT	△	△	△	△	△	△	△
12 GEC	①	SA, OSP		-	-	1	-	-	1
	②	SA				1	1	-	
	③	SA, BS, OSP	1	1	1	1	-	-	1
	④	SA, BS					1	1	1
	⑤	SA, BS						1	1
	⑥	SA							
3 CBC	①	OSP	1	1	2	3	1	2	5
	②	OSP				1	1	-	
	③	OSP	-	1	1	1	-	-	
	④	OSP	1	1	1	1	-	-	1
	⑤	OSP							
	⑥	OSP							
#12	ISNS			-	2	2	2	-	
	TOTAL		1	2	3	3	-	-	3
#10	SIGNAL COMMON		1	1	1	1	1	1	1
	LUMINAIRE		2	2	2	2	2		
	TOTAL		3	3	3	3	3	3	1
	DLC	①				-	3	-	-
#8	BS	-	-	-	-	-	-	2	2
	OSP		1	1	1	-	-	-	1
	TOTAL		1	1	1	4	-	2	6
	EMERGENCY VEHICLE PRE-EMPTION	-	-	-	1	1	2	3	
VIDEO DETECTION CABLE			-	-	1	1	2	3	
	1-12 PREP'S SIGNAL INTERCONNECT		1	1	1	1	-	-	
CONDUIT SIZE			3"	3"	4"	3"	3"	3-3"	
PERCENT FILL			14%	16%	23%	21%	10%	22%	18%
■ ALL CONDUCTORS AND CONDUIT ARE NEW UNLESS OTHERWISE NOTED (E) = EXISTING									
■ SIGNAL INTERCONNECTS ARE PER 12/10/00									



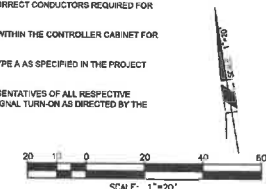
*INDUCTIVE LOOP DETECTOR SCHEDULE		
SENSOR UNIT	CHANNEL	DETECTOR
#1	1	1-85
	2	2-85
#2	1	SPARE
	2	SPARE
#3	1	1-84
	2	2-84
#4	1	SPARE
	2	SPARE
#5	1	1-86
	2	SPARE
#6	1	SPARE
	2	SPARE
#7	1	SPARE
	2	SPARE
#8	1	SPARE
	2	SPARE
#9	1	EV-1
	2	EV-2
#10	1	EV-3
	2	EV-4

* DETECTOR LOOP LOCATIONS SHALL BE APPROVED BY ENGINEER IN FIELD PRIOR TO INSTALLATION. ALL DETECTOR UNITS SHALL BE RACK MOUNTED, DUAL CHANNEL, PER SPECIAL.



TRAFFIC SIGNAL GENERAL NOTES CONTINUED:

13. THE CONDUCTOR SCHEDULE IS FURNISHED AS AN INSTALLATION GUIDE ONLY. IT SHALL BE THE RESPONSIBILITY OF THE CONTRACTOR TO PROVIDE THE CORRECT CONDUCTORS REQUIRED FOR THE INTENDED OPERATION.
14. ALL WIRING AND EQUIPMENT SHALL BE MARKED (TAGGED) WITHIN THE CONTROLLER CABINET FOR PHASE AND POLE IDENTIFICATION.
15. ALL INDICATIONS AND ILLUMINATED SIGNALS SHALL BE LED TYPE A AS SPECIFIED IN THE PROJECT SPECIAL PROVISIONS. LED LENSES SHALL NOT BE CLEAR.
16. CONTRACTOR SHALL HAVE AUTHORIZED/CERTIFIED REPRESENTATIVES OF ALL RESPECTIVE EQUIPMENT MANUFACTURERS PRESENT AT THE TIME OF SIGNAL TURN-ON AS DIRECTED BY THE ENGINEER.



- 1 FURNISH AND INSTALL ASST-3700 CONTROLLER ASSEMBLY AND VIDEO DETECTION SYSTEM IN A CLEAR-COAT TYPE #4-4C CABINET PER THE SPECIAL PROVISIONS. FURNISH AND INSTALL A 100 WATT SUPPLE POWER SUPPLY (SPS) IN A CLEAR-COAT CABINET MOUNTED ON THE LEFT SIDE OF CONTROLLER CABINET. SEE THE SPECIAL PROVISIONS FOR THE CONCRETE FOUNDATION 18" ABOVE THE BELOW GRADE TO EXTEND COMPLETELY UNDER CONTROLLER AND UPR CABINET. A 4" ACCESS HOLE THROUGH CABINETS SHALL BE DRILED AS DIRECTED BY ENGINEER.
- 2 FURNISH AND INSTALL TYPE-3 OF 1296V-40 SERVICE ENCLOSURE
- 3 FURNISH AND INSTALL VIDEO DETECTION CAMERA ON SIGNAL MOUNTS PER SPECIAL PROVISIONS. THE EXACT LOCATION OF DETECTION ZONES TO BE DETERMINED IN THE FIELD.
- 4 FURNISH AND INSTALL EMERGENCY VEHICLE PREEMPTION SENSOR UNIT AS DIRECTED BY THE ENGINEER. SEE SPECIAL PROVISIONS.
- 5 FURNISH AND INSTALL TRAFFIC SIGNAL MAST-HARN MOUNTED SIGN PER CALTRANS STANDARD PLAN E-7-78, DETAIL U.
- 6 FOR SIGNAL INTERCONNECT AND EQUIPMENT SEE SIGNAL INTERCONNECT PLANS.
- 7 FURNISH AND INSTALL POLE MOUNTED SIGN PER CALTRANS STANDARD PLAN 54.



MARK	DESCRIPTION	DATE	APPR.
3	RECORD DRAWING	7/31/15	
2	ROADWAY, STRIPING & TRAFFIC SIGNAL REVS		
1	ROADWAY GRADING, DRAINAGE, STRIPING, SIGNAL & BRIDGE REVS		



PETER KIM, PE

DESIGNED BY:	BY:	SCALE:
BY:	BY:	06/29/15
DRAWING CODE:		
FILE NAME:		

ORANGE COUNTY
PUBLIC WORKS

COW CAMP ROAD
CHUQUITA CANYON BRIDGE
TO STATION 76+00.00
TRAFFIC SIGNAL
A STREET
AT
COW CAMP ROAD

Sheet
Reference
Number

TS-002