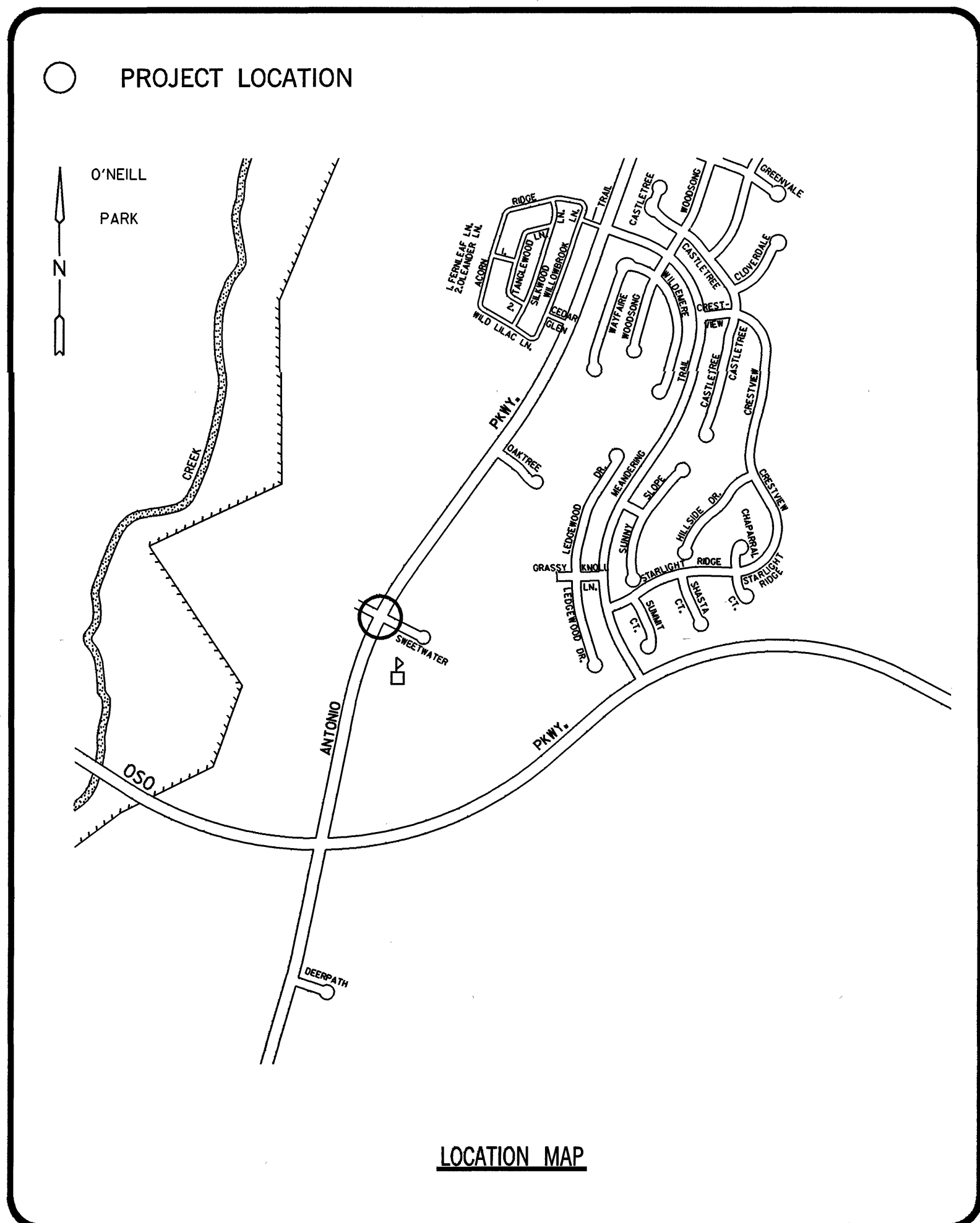
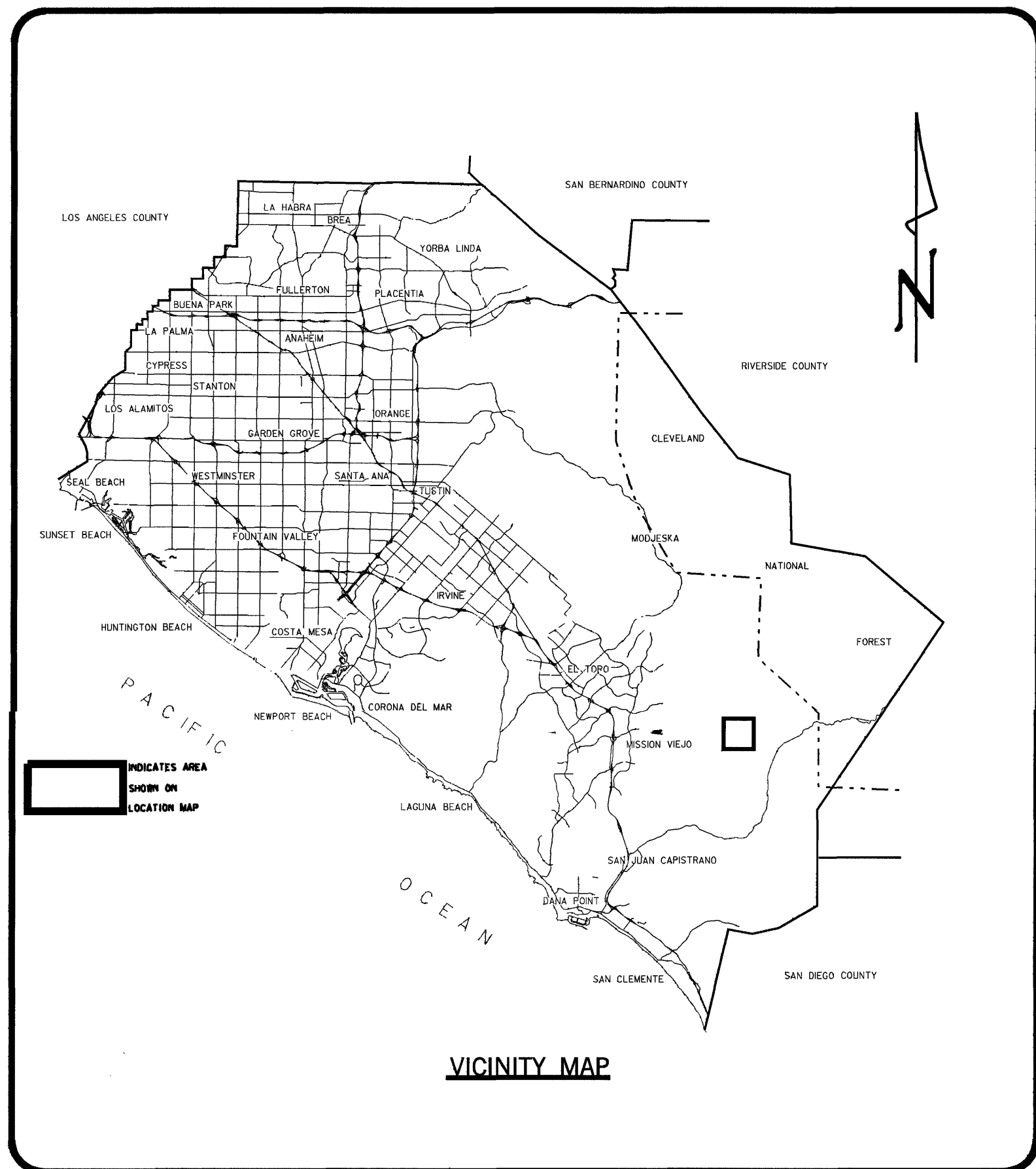


ANTONIO @ SWEETWATER

A494.1



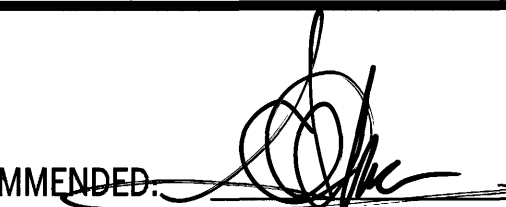
ORANGE COUNTY
PUBLIC FACILITIES & RESOURCES DEPARTMENT
SANTA ANA, CALIFORNIA
JOHN W. SIBLEY, DIRECTOR


PLANS FOR CONSTRUCTION OF
A TRAFFIC SIGNAL
AT
ANTONIO PARKWAY
AND
SWEETWATER

JUNE 1997

FUNDED BY: VINTAGE COMMUNITIES, INC.
(LAS FLORES PLANNED COMMUNITY)

ENCROACHMENT PERMIT No. :

RECOMMENDED: 
TRAFFIC ENGINEER
I. G. OCHOA
RCE 35217-10-30-99
RTE 1183 (12-31-99)
DATE 6/13/97

APPROVED: 
DEPUTY DIRECTOR / CHIEF ENGINEER
W. L. ZAUN
DATE 6/13/97

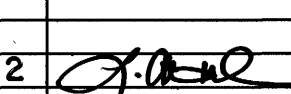
REGISTERED PROFESSIONAL ENGINEER
TRAFFIC
No. 1183
Exp. 9/30/99
STATE OF CALIFORNIA
DATE 6/13/97

INDEX OF SHEETS	
SHEET	DESCRIPTION
1	TITLE SHEET
2	SIGNAL PLAN
3	DETAIL SHEET

UTILITY OWNER	CONTACT	PHONE NO.
COX COMMUNICATIONS	MICKEY MILLER	(714)240-8828
PACIFIC BELL	JACKIE SHELLY	(714)666-5749
THE GAS CO.	BOB WARTH	(714)634-3119
S.D.G.&E.	PATTI GOOD	(714)361-8047
SANTA MARGARITA WATER DISTRICT	DIA BADIR	(714)459-6514
USA		1-800-422-4133

AS - BUILT PLANS

INSPECTOR J. DELSIGNE
R.E. H. PELAEZ
CONTRACTOR BAXTER / GRIFFIN
DATE TURNED ON : AUG. 21, 1997

NO.	DESCRIPTION	1, 2 SHT.	APPROVED	10-99 DATE
REVISIONS				
1	AS-BUILT UPDATE	1, 2		10-99

W. O. NO. ER10142

SHEET 1 OF 3

CONDUCTOR		SCHEDULE								CONDUCTOR		SCHEDULE							
AWG	CIRCUIT	RUN								AWG	CIRCUIT	RUN							
		1	2	3	4	5	6	7	8			1	2	3	4	5	6	7	8
# 14	01									# 20	EVP	1	2	2	2	1	2	4	
	02										SIGNAL COMMON	1	1	2	2	2	1	2	4
	04										LUMINAIRE	2		2	2	2	2	2	4
	05										TOTAL	3	1	4	4	4	3	4	8
	06									DLC	01	1		1	1			1	
	08										02							5	5
	02P										04			2	2	2		2	
	04P										05							1	1
	06P										06	5		5	5	5		5	
	08P										08						3	3	3
	02PPB										TOTAL	6	2	8	8	8	3	9	17
	04PPB										CONDUIT SIZE	(3")	(2")	(3")	(3")	(3")	(3")	2-3"	
	06PPB																		
	08PPB																		
	PPB COMMON																		
	SPARES																		
	TOTAL																		

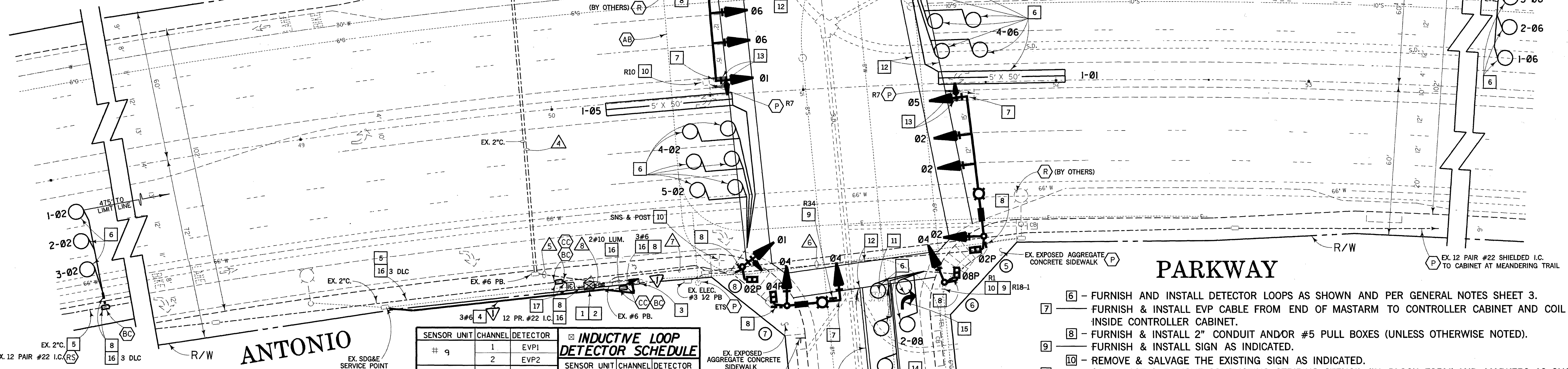
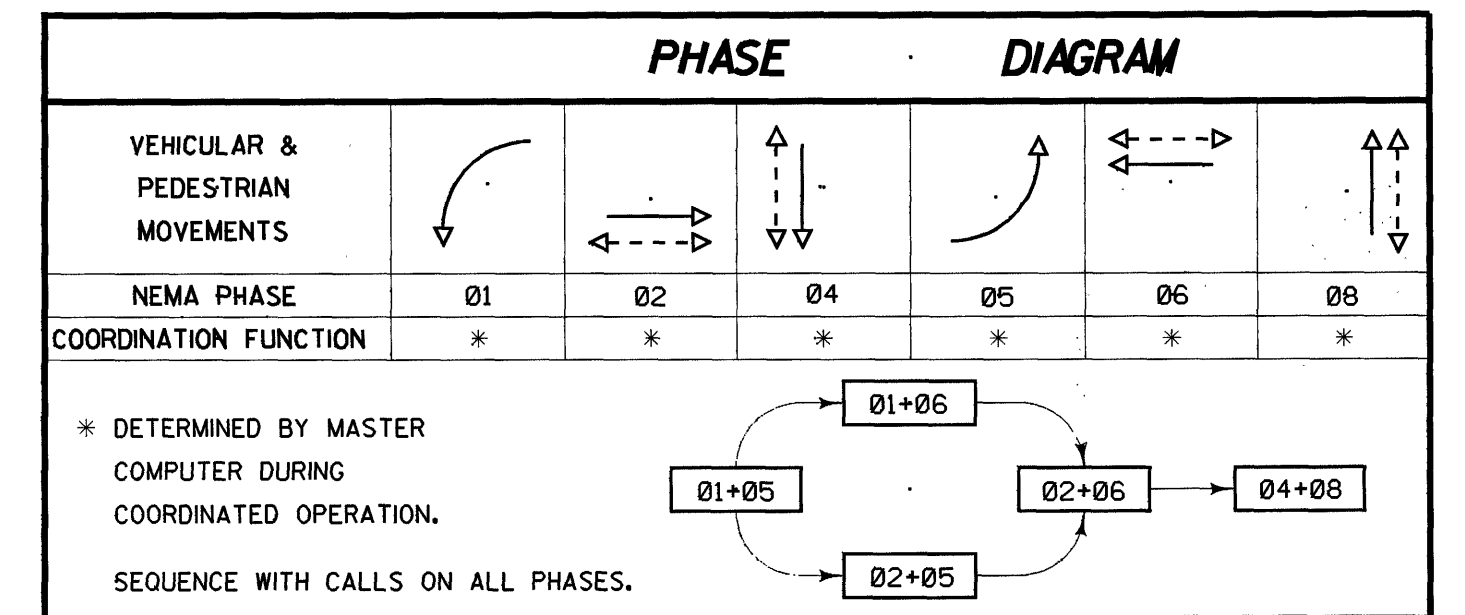
() = EXISTING
BOLD = NEW

GENERAL NOTES:

SEE SHEET 3

CONSTRUCTION NOTES:

- CONSTRUCT P.C. CONCRETE TYPE "P" CONTROLLER CABINET FOUNDATION.
- INSTALL COUNTY PROVIDED TYPE TS2 TRAFFIC AND MASTER CONTROLLERS IN A FULLY WIRED TYPE "P" ALUMINUM CABINET. FACE CABINET DOOR TOWARDS ANTONIO PKWY.
- FURNISH & INSTALL TYPE III-B ELECTRICAL SERVICE & FOUNDATION.
- FURNISH & INSTALL CONDUCTOR AS INDICATED TO ELECTRICAL SERVICE CONNECTION. (ALSO 3" CONDUIT)
- FURNISH & INSTALL ±1700' OF 12 PAIR #22 TWISTED, SHIELDED INTERCONNECT TELEPHONE CABLE FROM SPLICE CABINET AT OSO PKWY. & ANTONIO PKWY. TO THIS CONTROLLER FOR TELEPHONE SERVICE CONNECTION.



PARKWAY

- FURNISH AND INSTALL DETECTOR LOOPS AS SHOWN AND PER GENERAL NOTES SHEET 3.
- FURNISH & INSTALL EVP CABLE FROM END OF MASTARM TO CONTROLLER CABINET AND COIL 10' OF CABLE INSIDE CONTROLLER CABINET.
- FURNISH & INSTALL 2" CONDUIT AND/OR #5 PULL BOXES (UNLESS OTHERWISE NOTED).
- FURNISH & INSTALL SIGN AS INDICATED.
- REMOVE & SALVAGE THE EXISTING SIGN AS INDICATED.
- SANDBLAST & REMOVE CONFLICTING STRIPING, STENCIL (IN BLOCK FORM) AND MARKERS AS SHOWN.
- PAINT 12" SOLID YELLOW.
- PAINT 4" DOUBLE YELLOW PER DETAIL 22.
- PAINT 8" SOLID WHITE (PER DETAIL 38).
- STENCIL AS SHOWN.
- FURNISH & INSTALL CONDUCTORS AS INDICATED.
- FURNISH & INSTALL SPLICE CABINET PER DETAIL "F" SHEET 3 AND SPECIFICATIONS.

LEGEND

- AB ABANDON
- BC INSTALL PULL BOX IN EXISTING CONDUIT RUN.
- CB INSTALL CONDUIT INTO EXISTING PULL BOX.
- CC CONNECT NEW AND EXISTING CONDUIT.
- P PROTECT IN PLACE
- RS REMOVE & SALVAGE EQUIPMENT.

POLE SCHEDULE											
NO.	TYPE	HEIGHT	SIGNAL	M.A.	M.A.	WATTS	VEH.	M.A.	PED.	PHASE	POLE QUAD
1	(29-5-80)	30'	(55')	(15')	250	SV-1-T	3	SP-1-CS	4	N	C
2	(1A)	10'				TV-1-T		SP-1-CS	6	E	S
3	(17-3-80)	30'	(20')	(12')	150	SV-1-T	1	SP-1-CS	6	E	C
4	(1A)	10'				TV-1-T		SP-1-CS	8	S	S
5	(29-5-80)	30'	(55')	(15')	250	SV-1-T	3	SP-1-CS	8	S	C
6	(1A)	10'				TV-1-T		SP-1-CS	2	W	S
7	(17-3-80)	30'	(20')	(12')	150	SV-1-T	1	SP-1-CS	2	W	C
8	(1A)	10'				TV-1-T		SP-1-CS	4	N	S

EXACT POLE LOCATIONS DETERMINED BY ENGINEER IN THE FIELD. () = COUNTY PROVIDED EQUIPMENT. C = C.I.D.H. POT HOLE POLE FOUNDATION LOCATIONS PRIOR TO ORDERING POLES. * = COUNTY TO PROVIDE ANCHOR BOLTS. S = SQUARE.

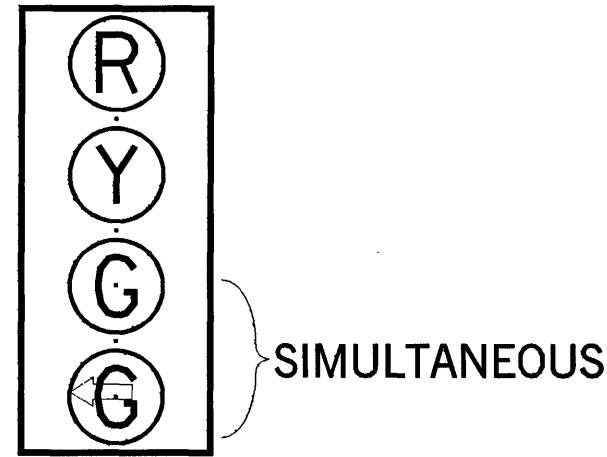
INDUCTIVE LOOP DETECTOR SCHEDULE

SENSOR UNIT	CHANNEL	DETECTOR
# 9	1	EVP1
	2	EVP2
# 10	1	EVP3
	2	EVP4

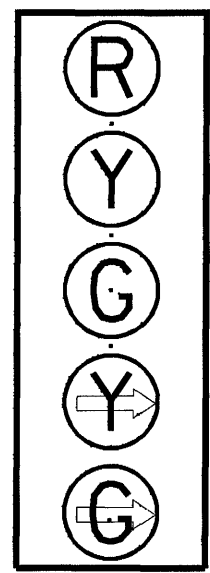
DETECTOR LOOP LOCATIONS SHALL BE APPROVED BY ENGINEER IN FIELD PRIOR TO INSTALLATION. ALL DETECTOR UNITS SHALL BE RACK MOUNTED. DUAL CHANNEL, DUAL OUTPUT PER CHANNEL WITH INTEGRAL COLORATED EXTENSION AND DELAY CAPABILITY. OUTPUT "A" SHALL BE TIMED. OUTPUT "B" SHALL BE PRESENCE MODE FOR SYSTEM SAMPLING & COUNT OUTPUT ONLY. (A) = SYSTEM SAMPLER NUMBER.

ORANGE COUNTY PUBLIC FACILITIES & RESOURCES DEPARTMENT	
ANTONIO PARKWAY AT SWEETWATER	
SIGNAL PLAN	
10-99	AS-BUILT UPDATE T.L.E.
MARK	DATE
REVISIONS	
DESIGNED	DATE
DRAWN	CHECKED
PREPARED UNDER SUPERVISOR OF	
SCALE	DATE
AS SHOWN	JUNE 97
W. O. NO. ERI042	
SHEET 2 OF 3	

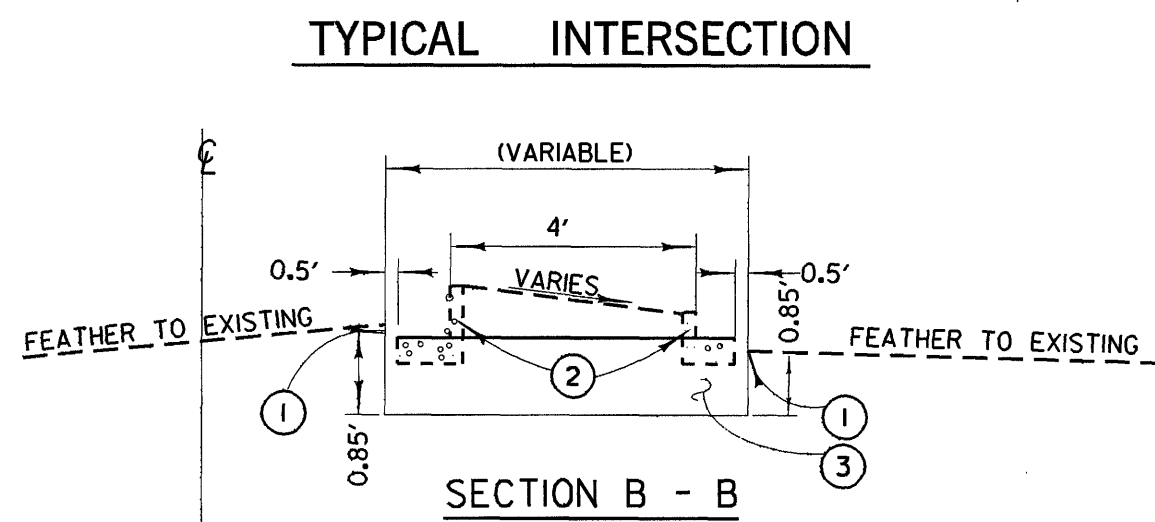
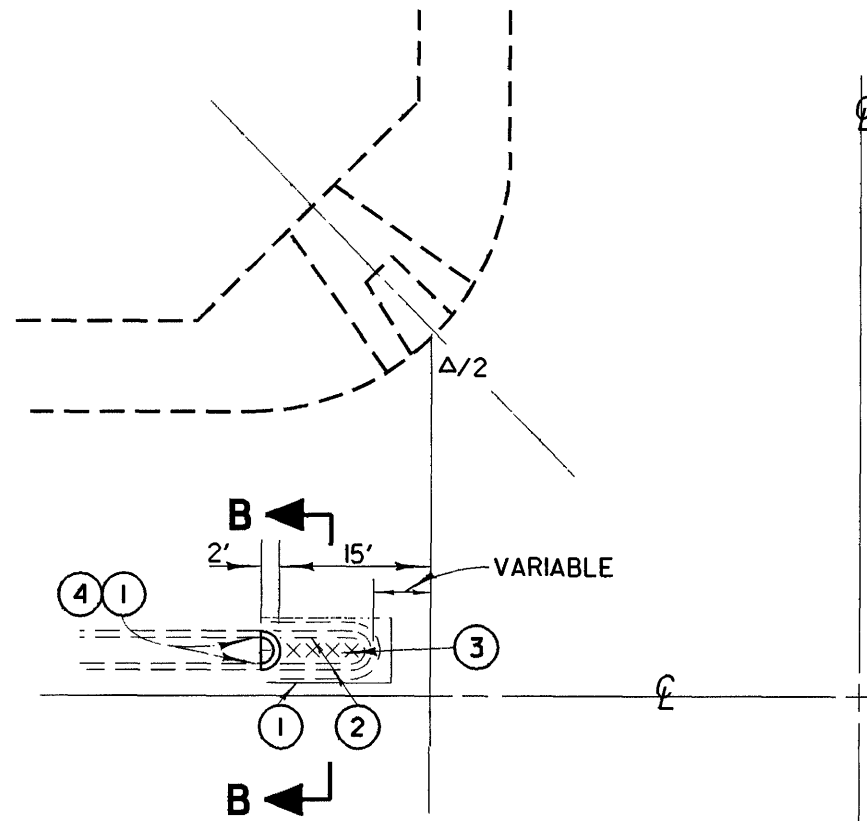
DETAIL A
4-SECTION SIGNAL HEAD
12" LENSES



DETAIL E
5-SECTION SIGNAL HEAD
12" LENSES



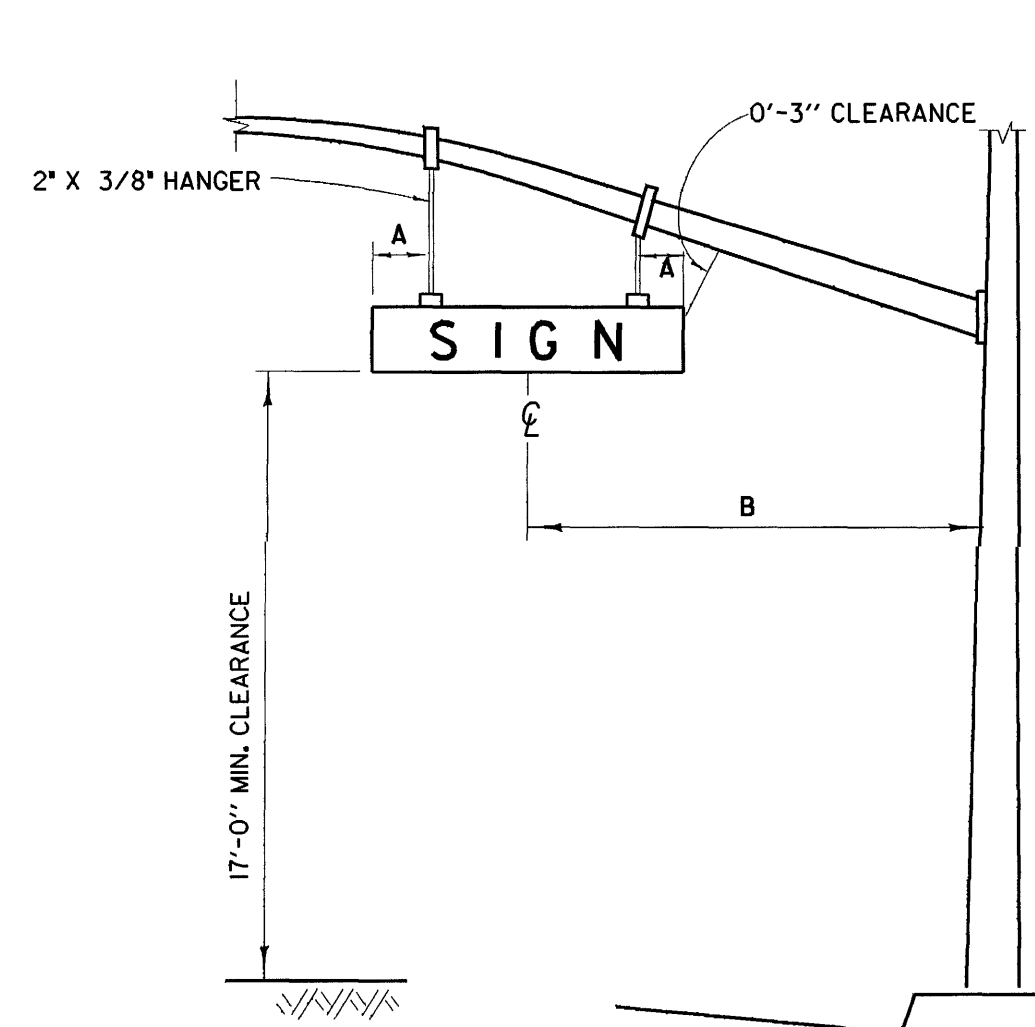
DETAIL B
INTERSECTIONS RAISED MEDIAN



NOTES - DETAILS B

1. SAWCUT AND JOIN EXISTING
2. REMOVE CONCRETE
3. CONSTRUCT 0.85' AC OVER NATIVE SOIL
4. CONSTRUCT TYPE AI-8 CONCRETE CURB PER APWA STD. PLAN 120-0.

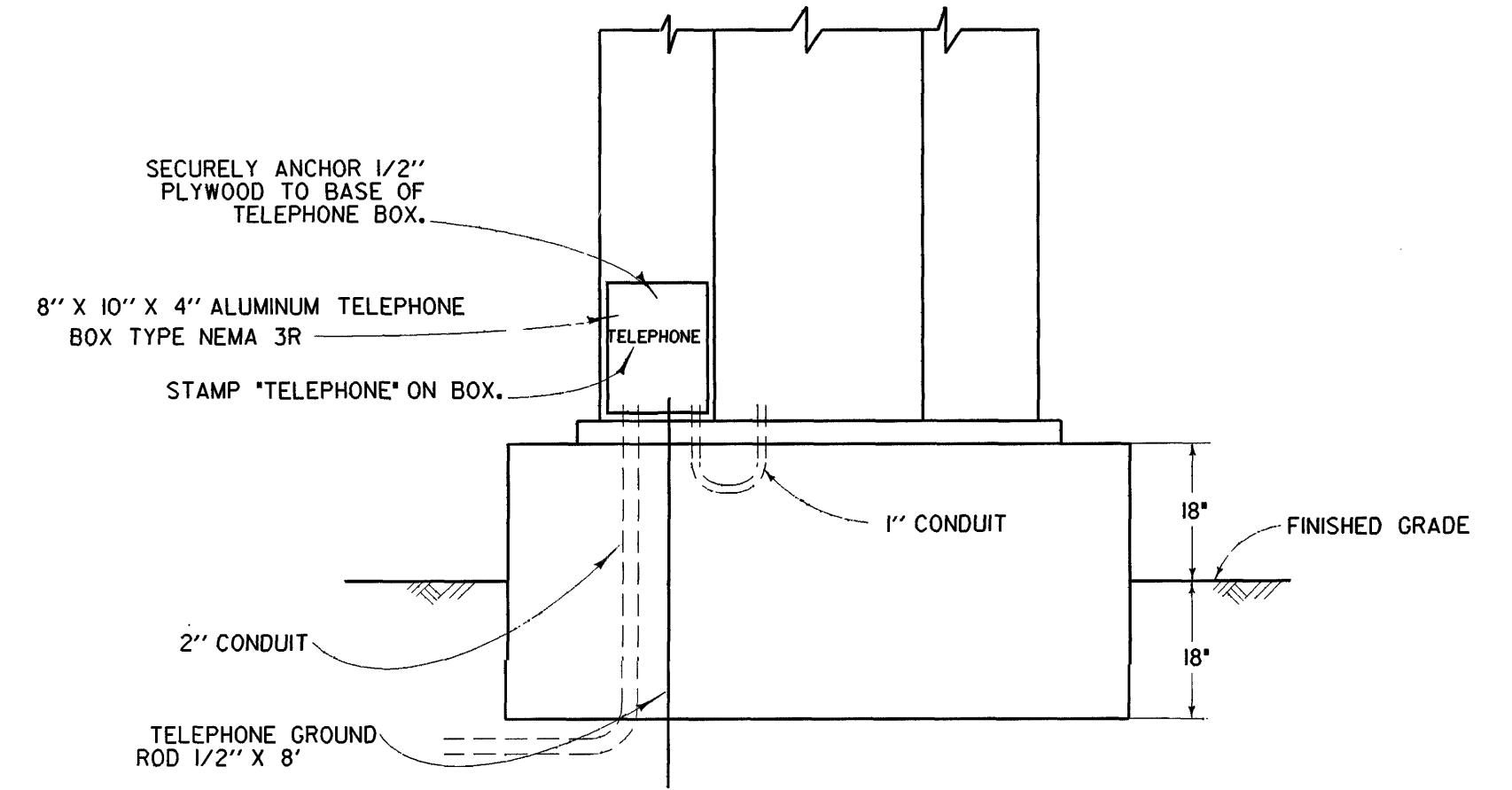
DETAIL C
REFLECTORIZED STREET NAME SIGN COMPONENTS



NOTES - DETAIL C

- A 1'-6" (18"x72" SIGN), 2'-0" (18"x96" SIGN)
B 10'-6" CENTERLINE OF SIGN TO FACE OF POLE

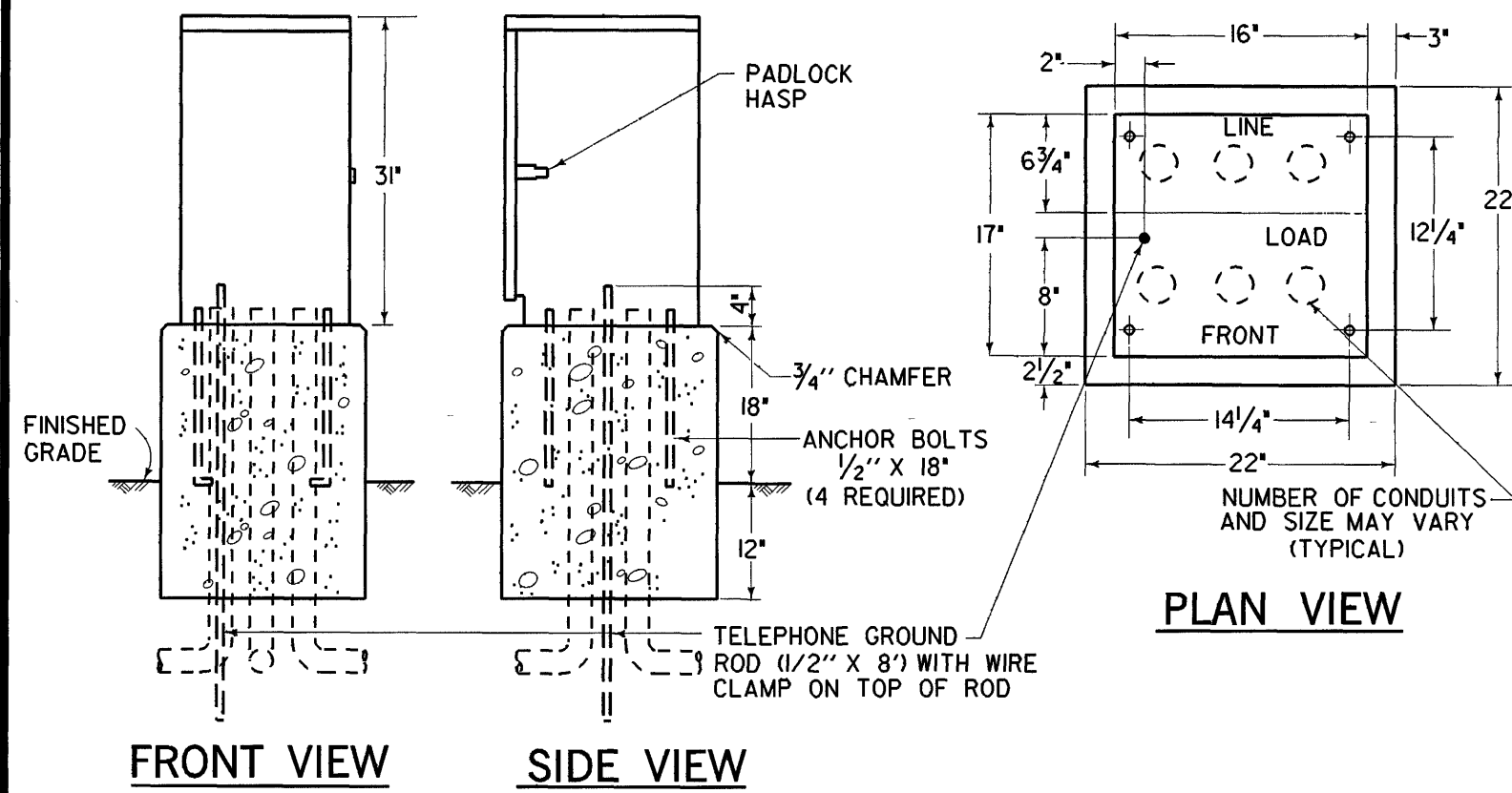
DETAIL D
TELEPHONE SERVICE BOX



GENERAL NOTES :

1. ALL WORK, MATERIALS AND EQUIPMENT SHALL CONFORM TO THE REQUIREMENTS OF THE CALIFORNIA, DEPARTMENT OF TRANSPORTATION, STANDARD PLANS AND STANDARD SPECIFICATIONS DATED JULY 1992 AND THE SPECIAL PROVISIONS FOR THIS PROJECT.
2. UTILITIES SHOWN ON THESE PLANS ARE CORRECT AND ACCURATE TO THE EXTENT OF AVAILABLE RECORDS AND KNOWLEDGE. THE CONTRACTOR, HOWEVER, IS REQUIRED TO ASCERTAIN THE EXACT LOCATION OF UNDERGROUND FACILITIES PRIOR TO DOING WORK THAT MAY DAMAGE SUCH FACILITIES OR INTERFERE WITH THEIR SERVICE.
3. 48 HOURS PRIOR TO BEGINNING OF CONSTRUCTION, THE CONTRACTOR SHALL CONTACT ORANGE COUNTY PUBLIC FACILITIES & RESOURCES DEPARTMENT FOR INSPECTION AT 567-7800.
4. THE ENGINEER SHALL APPROVE POLE AND LOOP DETECTION PLACEMENT IN THE FIELD PRIOR TO INSTALLATION.
5. ALL CONDUIT SHALL BE 2" UNLESS OTHERWISE NOTED.
6. ALL PULL BOXES SHALL BE #5 UNLESS OTHERWISE NOTED.
7. ALL SALVAGED EQUIPMENT SHALL BE DELIVERED BY CONTRACTOR TO ORANGE COUNTY YARD AT 1152 EAST FRUIT ST., SANTA ANA, CA. CONTRACTOR SHALL GIVE A 48-HOUR NOTICE TO THE COUNTY PRIOR TO THE DELIVERY DATE.
8. CONTRACTOR SHALL PROVIDE ALL NECESSARY TELEPHONE AND ELECTRICAL SERVICE LINES AND INTERCONNECT HOOK-UPS BETWEEN THE LOCAL CONTROLLER AND THE SYSTEM MASTER.
9. PEDESTRIAN INDICATION SHALL BE INTERNATIONAL SYMBOL.
10. PEDESTRIAN PUSH BUTTON SHALL BE TYPE B WITH INTERNATIONAL SYMBOL PLATE.
11. ALL VEHICLE INDICATIONS SHALL BE 12" DIAMETER WITH BACKPLATES, GLASS REFLECTORS, AND GLASS LENSES, UNLESS SHOWN OTHERWISE.
12. CONTRACTOR SHALL POTHOLE CONFLICTING UTILITIES AS DIRECTED BY ENGINEER.
13. CONTRACTOR SHALL AVOID DAMAGING EXISTING UTILITIES. (SEE SPECIAL PROVISIONS).
14. DETECTOR LOOPS SHALL BE CIRCULAR (6' DIAMETER) OR 6' X 6' WITH 9' SPACING IN THE DIRECTION OF TRAVEL UNLESS OTHERWISE NOTED.
15. ALL DETECTOR CABLE HOMERUNS SHALL BE IN THE CROSSWALK AREA.
16. ALL DETECTOR LOOPS SHALL BE FOUR (4) TURNS.
17. ALL QUADRUPOLE DETECTOR LOOPS SHALL BE TWO (2-4-2) TURNS.
18. TRAFFIC CONTROLLER CABINET FOUNDATION SHALL BE 18" ABOVE AND BELOW FINISHED GRADE (SEE DETAIL D).
19. INSTALL "CABINET DOOR OPEN" CIRCUIT IN CONTROLLER CABINET PER MANUFACTURES SPECIFICATIONS.

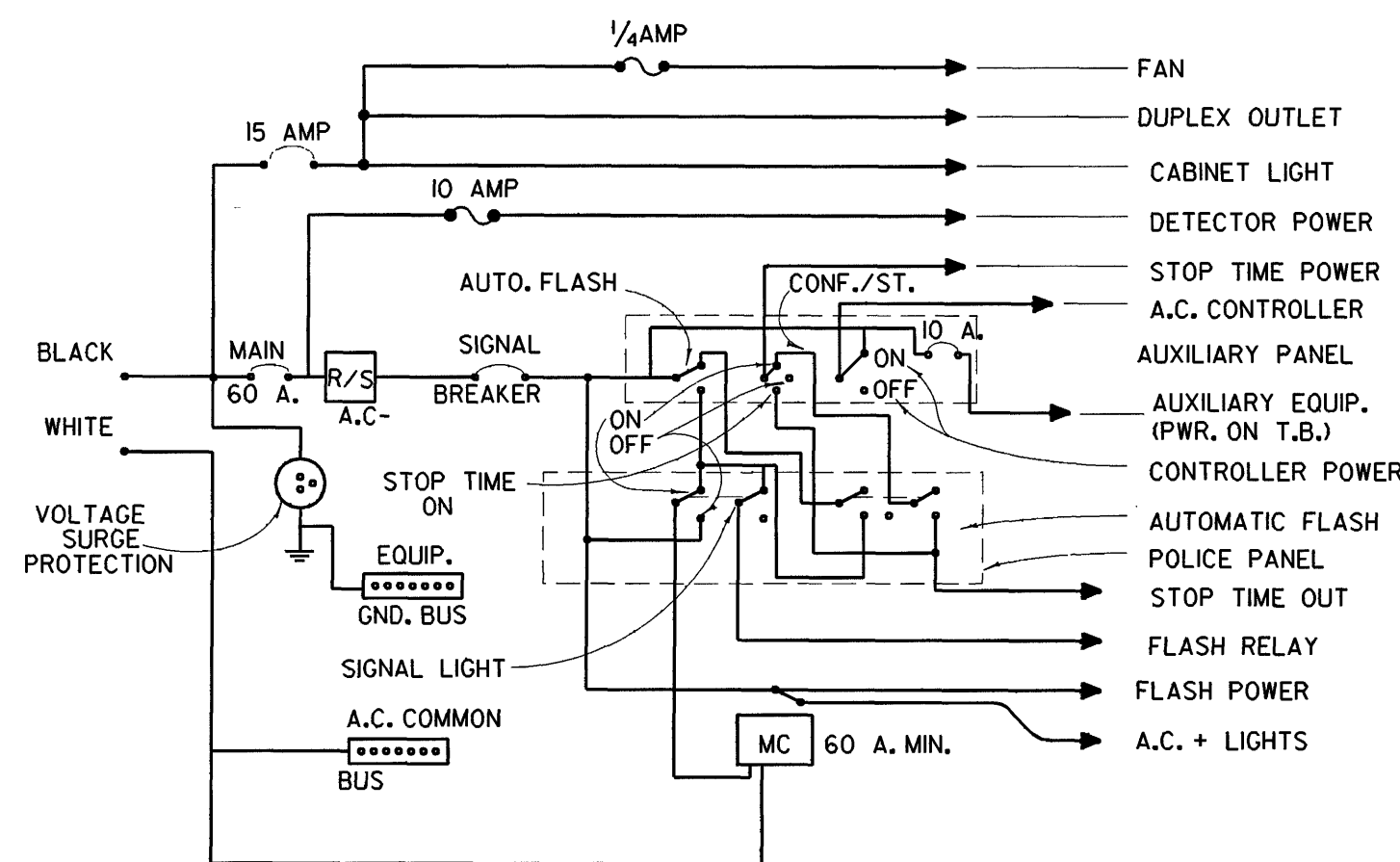
DETAIL F
INTERCONNECT SPICE CABINET



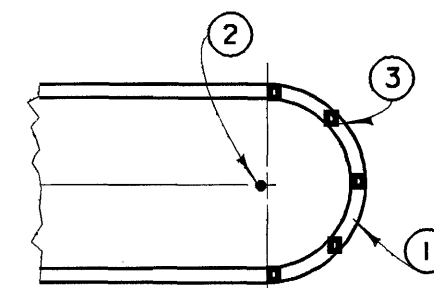
NOTES - DETAIL F

1. FOUNDATION TO BE 22" X 22". ANCHOR BOLT PLACEMENT PER CABINET MFG. TEMPLATE.
2. ENCLOSURE SHALL BE ALUMINUM AND FURNISHED WITH A DETACHABLE MOUNTING BASE.
3. ALL FACTORY INSTALLED COMPONENTS SHALL BE U.L. LISTED OR PER PUBLISHED N.E.C. STANDARDS.
4. A 3/4" CONSTRUCTION GRADE PLYWOOD PANEL SHALL BE FASTENED TO THE REAR WALL. PANEL SHALL BE 12" X 24" AND SHALL HAVE A No. M-25 AND R-841 STANDOFF FASTENED IN THE CENTER OF THE PANEL.
5. ENCLOSURE FINISH SHALL CONFORM TO A.S.T.M. B-17. PAINT TO BE APPLIED TO EXTERNAL AND INTERNAL CABINET SURFACE SHALL BE WHITE ANTI-GRAFFITI CARDINAL'S 6409 G SERIES OR APPROVED EQUAL. ANTI-GRAFFITI PAINT SHALL BE APPLIED TO CABINET AT THE TIME OF MANUFACTURE.
6. PROVIDE 1/2" CONDUIT FOR FUTURE #5 VAC SERVICE.
7. PROVIDE GROUND BUS INSIDE SPICE CABINET.

DETAIL G
CONTROLLER CABINET WIRING



DETAIL H
RAISED MEDIAN MARKING



NOTES - DETAIL H

1. PAINT MEDIAN NOSE WITH HIGHLY REFLECTIVE PREMIXED WHITE TRAFFIC PAINT WITH GLASS BEADS.
2. INSTALL FLEXIBLE VERTICAL TYPE K MARKER, R7, RIO OR TYPE N-10N TELESAR POST AS INDICATED ON PLAN.
3. INSTALL YELLOW REFLECTIVE PAVEMENT MARKERS ON TOP SURFACE OF MEDIAN CURB NOSE AT 2' C.C. SPACING (MINIMUM 5 MARKERS). PLACE REFLECTIVE SURFACE OF MARKERS PERPENDICULAR TO C OF ROADWAY.

ORANGE COUNTY PUBLIC FACILITIES & RESOURCES DEPARTMENT			
SIGNAL DETAIL SHEET			
3-29-88	ADDED NOTE 16.	PREPARED UNDER	SHEET 3 OF 3
4-4-88	DELETED TYPE II SERVICE.	SUPERVISION OF	
12-8-88	ADDED INTERCONNECT SPICE CABINET.	DATE	
11-18-91	MODIFIED INTERCONNECT SPICE CABINET.	SCALE	
6-7-93	MODIFIED CONTROLLER CABINET WIRING.	DATE	
1-1-97	MODIFIED INTERCONNECT SPICE CABINET.	W. O. NO.	
3-4-97	MODIFIED OVERHEAD STREET NAME SIGN.	ERI0142	
	MODIFIED DETECTOR LOOP NOTES.		
REVISIONS		NOT TO SCALE	
MARK	DATE	DESIGNED	CHECKED