

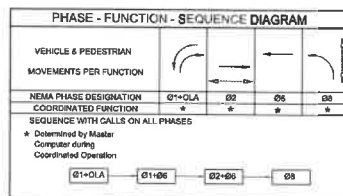
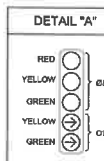
1. CONTRACTOR SHALL OBTAIN AND THOROUGHLY READ THE TRAFFIC SIGNAL SPECIAL PROVISIONS FOR THIS PROJECT PRIOR TO ORDERING EQUIPMENT. NO ADDITIONAL COMPENSATION SHALL BE MADE FOR COSTS RELATED TO UNSPECIFIED EQUIPMENT.

1. ALL WORK, MATERIALS AND EQUIPMENT SHALL CONFORM TO THE REQUIREMENTS OF THE STATE OF CALIFORNIA, DEPT. OF TRANSPORTATION, STANDARD PLANS AND STANDARD SPECIFICATIONS DATED 2009. AND THE SPECIAL PROVISIONS FOR THIS PROJECT.
2. UTILITY SHOWN ON THESE PLANS ARE CORRECT AND ACCURATE TO THE EXTENT OF AVAILABLE RECORDS AND FIELD SURVEY. THE CONTRACTOR SHALL BE RESPONSIBLE TO ASCERTAIN THE EXACT LOCATION OF UNDERGROUND UTILITIES PRIOR TO ANY CONSTRUCTION. THE CONTRACTOR SHALL BE RESPONSIBLE TO PROTECT AND MANAGE SUCH FACILITIES ON INTERFERENCE WITH THEIR SERVICE.
3. THE CONTRACTOR SHALL OBTAIN ALL NECESSARY PERMITS AND NOTIFY ALL UTILITY COMPANIES A MINIMUM OF 48 HOURS BEFORE ANY CONSTRUCTION. THE CONTRACTOR SHALL BE RESPONSIBLE OF THE CONTRACTOR TO COORDINATE ALL PHASES OF CONSTRUCTION WITH THE VARIOUS UTILITY COMPANIES INVOLVED. VERIFY SERVICE LOCATION PRIOR TO CONSTRUCTION.
4. THE CONTRACTOR SHALL NOTIFY SERVICE OPERATIONS AT (714) 448-1048 48 HOURS PRIOR TO START OF CONSTRUCTION.
5. ALL TRAFFIC SIGNAL EQUIPMENT SHALL BE FURNISHED AND INSTALLED BY THE CONTRACTOR UNLESS OTHERWISE SPECIFIED.
6. NEW LOOP LIDS SHALL HAVE 4-INCHES, 86 CIRCULAR AND CENTERED IN LINES UNLESS OTHERWISE SPECIFIED. INSTALL LOOPS WITH HOT-MELT RUBBERIZED ASPHALT SEALANT.
7. COVER, SECURE AND SEAL ALL FIRE FIGHTER CONDUIT, POLE, OR PACE OPERATIONS.
8. CONTRACTOR SHALL POT-HOLE POLE LOCATIONS AND VERIFY FOUNDATION LOCATIONS PRIOR TO ORDERING POLES.
9. CONTRACTOR SHALL OBTAIN ENGINEER'S APPROVAL FOR LOCATIONS OF ALL POLES, CABINETS, CONDUITS, PULL BOXES, AND DETECTORS PRIOR TO INSTALLATION.
11. CONTRACTOR SHALL COORDINATE AND COMPLY WITH ALL ELECTRIFICATION REQUIREMENTS AS REQUIRED TO PROVIDE POWER TO ALL TRAFFIC SIGNAL OPERATION.
12. THE CONDUCTOR SCHEDULE IS FURNISHED AS AN INSTALLATION GUIDE ONLY. IT SHALL BE THE RESPONSIBILITY OF THE CONTRACTOR TO PROVIDE THE CORRECT CONDUCTOR REQUIREMENTS FOR EACH TRAFFIC SIGNAL OPERATION.
13. ALL WIRING AND EQUIPMENT SHALL BE MARKED (TAGGED) WITHIN THE CONTROLLER CABINET FOR PHASE AND POLE IDENTIFICATION.
14. ALL INDICATIONS AND ILLUMINATED SIGNS SHALL BE LED AND AS SHOWN IN THE SPECIFICATIONS. SPECIAL PREVIOUS, LED LENSES SHALL NOT BE USED.
15. CONTRACTOR SHALL HAVE AUTHORIZED CERTIFIED REPRESENTATIVES OF ALL RESPECTIVE EQUIPMENT MANUFACTURERS PRESENT AT THE TIME OF SIGNAL LAYOUT AS DIRECTED BY THE ENGINEER.

■ CONDUCTOR SCHEDULE									
AWG OR CABLE	TYPE	CIRCUIT	△	△	△	△	△	△	△
12 CSC	①	①, ②, ③	-	-	2	-	-	-	2
	②	①, ②, ③, ⑧SP	-	2	2	-	-	-	2
	③	②, ③, ⑧2P	-	-	-	2	-	2	2
	④	①, ③, ⑧2P	-	-	-	1	1	-	1
	⑤	③, ⑧2P	-	-	-	-	1	1	1
	⑥	①, ②	-	-	-	-	-	1	1
	TOTAL		2	4	1	3	1	0	0
3 CSC	①	⑧2PB, ⑧2PB	2	2	2	-	-	-	2
	②	⑧2PB	-	-	-	1	-	-	1
	③	⑧2PB, ⑧2PB	-	-	2	2	-	-	2
	④	⑧2PB	-	-	-	-	1	1	1
	⑤	⑧2PB	-	-	-	-	-	1	1
	TOTAL		2	2	1	2	1	0	0
#12	①SNS	-	2	2	-	2	-	4	-
#10	SIGNAL COMMON		-	1	1	1	1	1	1
	LUMINAIRE	-	2(②)	2(③)	2(④)	2(⑤)	4(⑥)	-	-
	TOTAL		3	3	3	3	5	1	1
DLC	②	-	-	-	-	-	-	3	-
	③	-	3	3	-	-	-	3	3
	④	-	-	-	4	4	-	4	4
	TOTAL		3	3	4	4	-	7	7
	ENERGY SENSITIVE RE-EMITTER	-	1	2	-	1	-	3	3
	VIDEO DETECTION CABLE	-	1	2	-	1	-	3	3
	1-12 PWR/SIGNAL INTERCONNECT	-	-	1*	1*	2*	-	3*	-
CONDUIT SIZE			3(③)	3-1/2(④)	3-1/2(⑤)	3(⑥)	3(⑦)	3-1/2(⑧)	3-1/2(⑨)
PERCENT FULL			8%	12%	23%	12%	34%	10%	32%

■ ALL CONDUCTORS AND CONDUIT ARE NEW UNLESS OTHERWISE NOTED (①) = EXISTING  
 \* SIGNAL INTERCONNECT PER SIGNAL INTERCONNECT PLANS

■ ALL CONDUCTORS AND CONDUIT ARE NEW UNLESS OTHERWISE NOTED: (E) = EXISTING  
\* SIGNAL INTERCONNECT PER SIGNAL INTERCONNECT PLANS

[illegible]

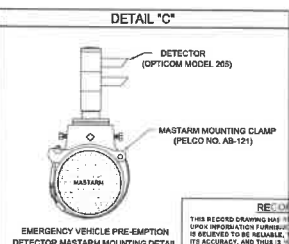
■ ALL EQUIPMENT IS EXISTING UNLESS OTHERWISE NOTED: (N) = NEW  
★ FOR PED PUSH BUTTON ASSEMBLY, SEE SPECIAL PROVISIONS

* INDUCTIVE LOOP DETECTOR SCHEDULE		
SENSOR UNIT	CHANNEL	DETECTOR
#1	1	1-02
	2	2-02
#2	1	1-02
	2	SPARE
#3	1	SPARE
	2	SPARE
#4	1	SPARE
	2	SPARE
#5	1	1-06
	2	2-06
#6	1	3-06
	2	SPARE
#7	1	1-08
	2	2-08
#8	1	3-08
	2	SPARE
#9	1	EXP-1
	2	EXP-2
#10	1	EXP-3
	2	EXP-4

\* DETECTOR LOOP LOCATIONS SHALL BE APPROVED BY ENGINEER IN FIELD PRIOR TO INSTALLATION. ALL DETECTOR UNITS SHALL BE RACK MOUNTED, DUAL CHANNEL, PER SPECIAL PROVISION.

**1** REMOVE EXISTING PULL BOX, FURNISH AND INSTALL ASC3-2100 CONTROLLER ASSEMBLY AND VIDEO DETECTION SYSTEM IN A CLEAR-COAT TYPE P-44 CABINET PER THE SPECIAL PROVISIONS. FURNISH AND INSTALL UNINTERRUPTIBLE POWER SUPPLY (UPS) IN SEPARATE CABINET MOUNTED ON THE LEFT SIDE OF CONTROLLER CABINET. SEE SPECIAL PROVISIONS. CONSTRUCT CONCRETE FOUNDATION 18" ABOVE AND 18" OH GRADE TO EXTEND COMPLETELY UNDER CONTROLLER AND UPS CABINET. A 4" ACCESS HOLE BETWEEN CABINET'S SHALL BE DRILLED AS DIRECTED BY ENGINEER.

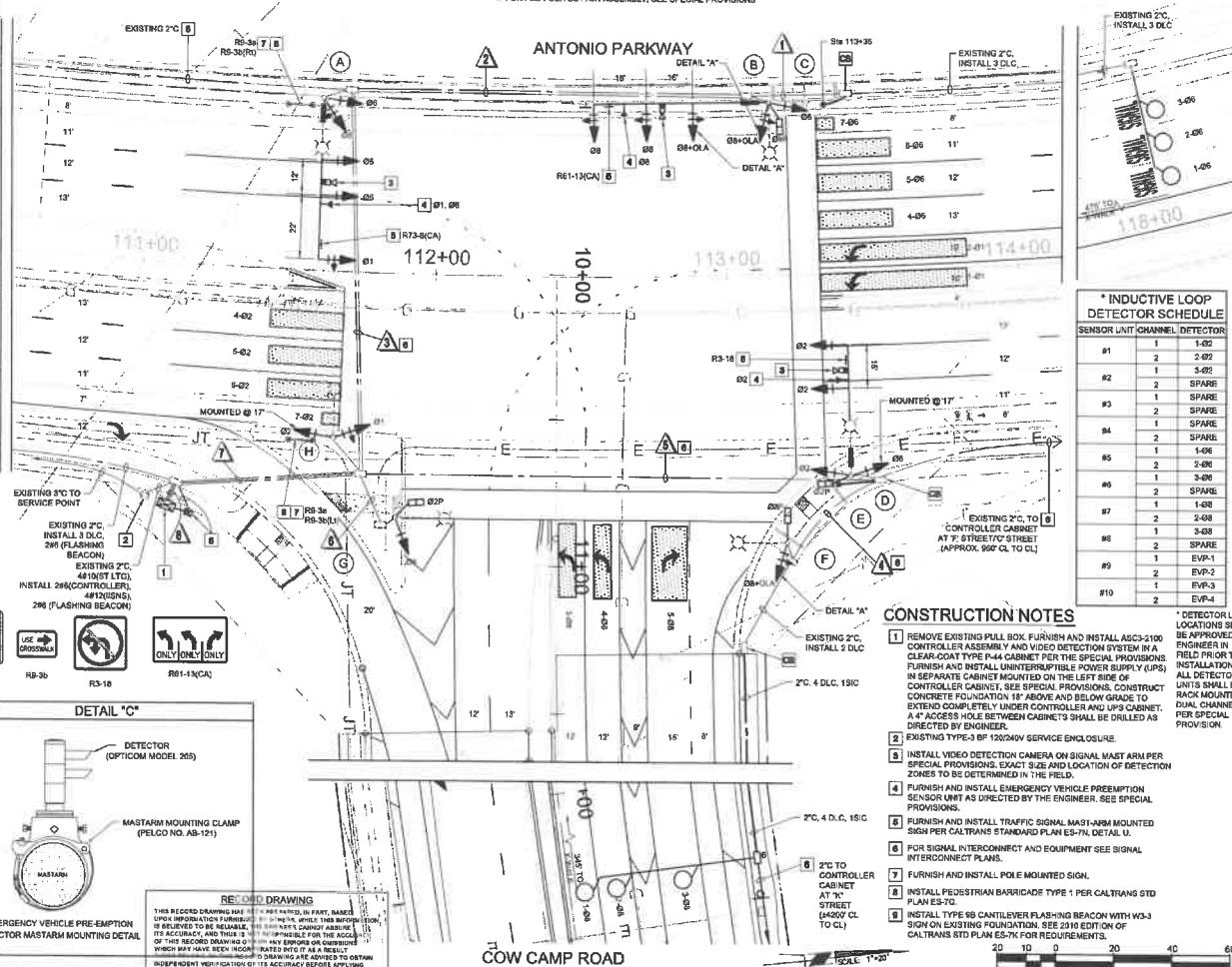
- |   |   |
|---|---|
| 2 | EXISTING TYPE 3 BF 120/204V SERVICE ENCLOSURE.  |
| 3 | INSTALL VIDEO DETECTION CAMERA ON SIGNAL MAST ARM/PER SPECIAL PROVISIONS, EXACT SIZE AND LOCATION OF DETECTION POINTS TO BE DETERMINED BY THE ENGINEER. SEE SPECIAL PROVISIONS. |
| 4 | FURNISH AND INSTALL EMERGENCY VEHICLE PREEMPTION SENSOR UNIT AS DIRECTED BY THE ENGINEER. SEE SPECIAL PROVISIONS.   |
| 5 | FURNISH AND INSTALL TRAFFIC SIGNAL MAST-ARM MOUNTED SIGN PER CALTRANS STANDARD PLAN ES-72N, DETAIL U.   |
| 6 | FOR SIGNAL INTERSECTION EQUIPMENT SEE SIGNAL INTERSECTION PLANS.  |
| 7 | FURNISH AND INSTALL POLE MOUNTED SIGN.  |
| 8 | INSTALL PEDESTRIAN BARRICADE TYPE 1 PER CALTRANS STD PLAN ES-73.  |
| 9 | INSTALL TYPE 69 CANTILEVER FLASHING BEACON WITH W-31 SIGN ON EXISTING FOUNDATION. SEE 2316 EDITION OF CALTRANS STD PLAN ES-7K FOR REQUIREMENTS.                                 |



**RECORD DRAWING**

THIS RECORD DRAWING HAS BEEN PREPARED, IN PART, BASED UPON INFORMATION FURNISHED BY OTHERS, WHILE THIS INFORMATION IS BELIEVED TO BE RELIABLE, THE ENGINEER CANNOT ASSURE ITS ACCURACY, AND THIS IS NOT RESPONSIBLE FOR THE ACCURACY OF THIS RECORD DRAWING OR FOR ANY ERRORS OR OMISSIONS WHICH MAY HAVE BEEN INCORPORATED INTO IT AS A RESULT OF THE INFORMATION RECEIVED. RECORD DRAWINGS ARE ADVISED TO OBTAIN INDEPENDENT VERIFICATION OF ITS ACCURACY BEFORE APPLYING IT FOR ANY PURPOSE.

RBF CONSULTING DATE: JULY 2016



3	RECORD DRAWING	7/31/15
1	ROADWAY GRADING,	
	DRAINAGE, STRIPING,	
	SIGNAL & BRIDGE REVS	



*Peter Kim*  
PETER KIM, PE

DESIGNED BY:	MARJAN ABDELJALIK	
BY:	M.A.	P.K.
DRAWING CODE:		
TITLE NAME:		
PLOT DATE:		SCALE:

DRANSE COUNTY  
PUBLIC WORKS

INTUITIVE CONSULTING, INC.  
7700 INDEPENDENT CENTER DRIVE, SUITE 400  
DANVER, CO 80501

COW CAMP ROAD  
CHICOITA CANYON BRIDGE  
TO STATION 76+00.00  
TRAFFIC SIGNAL  
ANTONIO PKWY  
AT  
COW CAMP ROAD

Sheet  
Reference  
Number

TS 001

TS-001