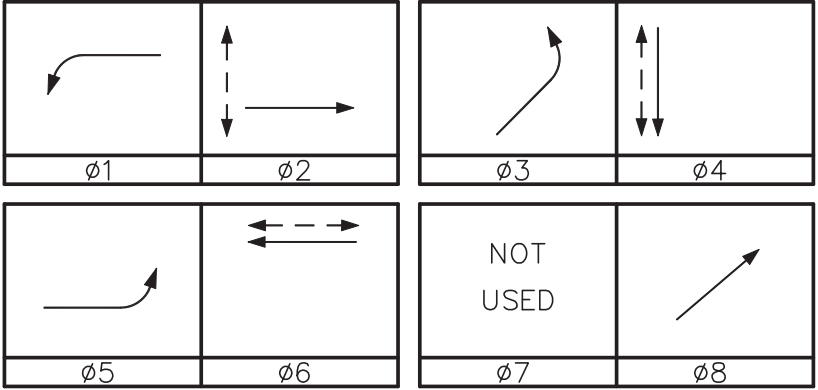


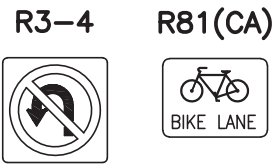
GENERAL NOTES:

- A. THIS PLAN IS BEING GENERATED TO DOCUMENT AS-BUILT CONDITIONS, AND TO REVIEW THE IN PLACE TRAFFIC SIGNAL INSTALLATION TO VERIFY COMPLIANCE WITH CURRENT APPLICABLE REGULATIONS. UNDERGROUND UTILITY CONSTRUCTION IS NOT A PART OF THE ENGINEER'S REVIEW, BUT IS SHOWN FOR INFORMATIONAL PURPOSES ONLY PER PREVIOUS AS-BUILT PLANS.
- B. TRAFFIC SIGNAL AND HIGHWAY LIGHTING CONSTRUCTION SHOWN HEREON CONFORMED TO THE VERSION OF THE STATE OF CALIFORNIA DEPARTMENT OF TRANSPORTATION STANDARD PLANS AND SPECIFICATIONS AND THE CALIFORNIA MANUAL OF UNIFORM TRAFFIC CONTROL DEVICES THAT WAS CURRENT AT THE TIME THE TRAFFIC SIGNAL WAS INSTALLED.
- C. TRAFFIC SIGNAL PHASING AND SIGNAL TIMING IN PLACE AT THE INTERSECTION SHALL BE AS DIRECTED BY THE CITY ENGINEER OR HIS DESIGNATED REPRESENTATIVE.

SIGNAL PHASE DIAGRAM

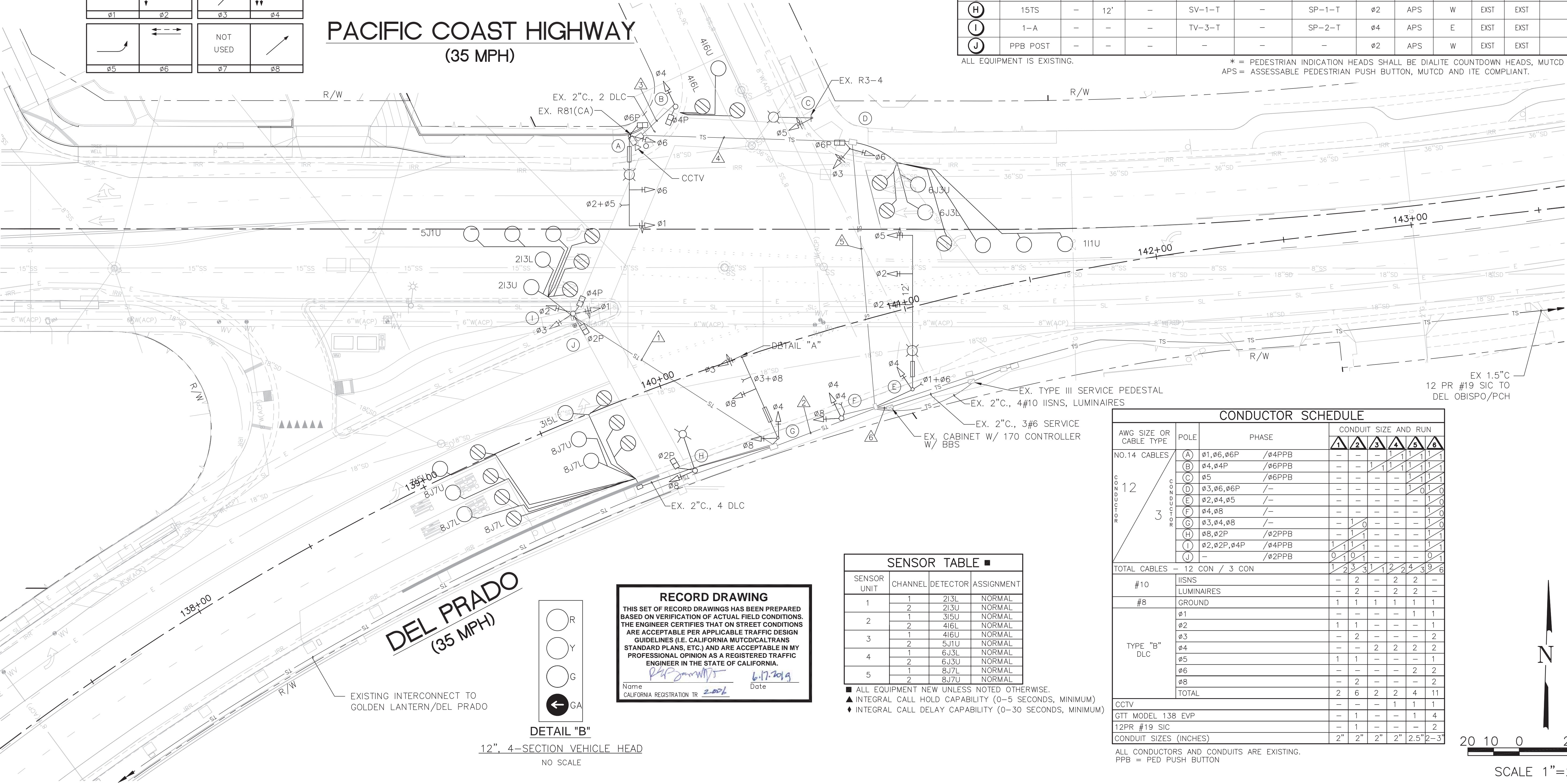


SIGNS ON THIS SHEET



STREET OF THE COPPER LANTERN

PACIFIC COAST HIGHWAY
(35 MPH)



DETAIL "B"

12", 4-SECTION VEHICLE HEAD
NO SCALE

RECORD DRAWING

THIS SET OF RECORD DRAWINGS HAS BEEN PREPARED BASED ON VERIFICATION OF ACTUAL FIELD CONDITIONS. THE ENGINEER CERTIFIES THAT ON STREET CONDITIONS ARE ACCEPTABLE PER APPLICABLE TRAFFIC DESIGN GUIDELINES (I.E. CALIFORNIA MUTCD/CALTRANS STANDARD PLANS, ETC.) AND ARE ACCEPTABLE IN MY PROFESSIONAL OPINION AS A REGISTERED TRAFFIC ENGINEER IN THE STATE OF CALIFORNIA.

Name: [Signature]
CALIFORNIA REGISTRATION TR: 2006
Date: 6/17/19

SENSOR TABLE

SENSOR UNIT	CHANNEL	DETECTOR	ASSIGNMENT
1	1	2I3L	NORMAL
1	2	2I3U	NORMAL
2	1	3I5U	NORMAL
2	2	4I6L	NORMAL
3	1	4I6U	NORMAL
3	2	5J1U	NORMAL
4	1	6J3L	NORMAL
4	2	6J3U	NORMAL
5	1	8J7L	NORMAL
5	2	8J7U	NORMAL

- ALL EQUIPMENT NEW UNLESS NOTED OTHERWISE.
▲ INTEGRAL CALL HOLD CAPABILITY (0-5 SECONDS, MINIMUM)
◆ INTEGRAL CALL DELAY CAPABILITY (0-30 SECONDS, MINIMUM)

EQUIPMENT SCHEDULE

POLE LOCATION	SIGNAL STANDARD			LUMINAIRE SIZE/TYPE	MOUNTINGS			PEDESTRIAN PUSH BUTTON			POLE LOCATION		LED I.I.S.N.S.	
	TYPE	MAST ARM			VEHICLE		PEDESTRIAN	PHASE	TYPE	QUAD	A			B
		SIG.	LUM.		POLE	MAST ARM								
(A)	26A-4-100	35'	15'	310W	SV-1-T	2-MAS F=14'	SP-1-T	Ø4	APS	E	EXST	EXST	Copper Lantern	
(B)	1-A	-	-	-	TV-1-T	-	SP-1-T	Ø6	APS	S	EXST	EXST	-	
(C)	15TS	-	15'	310W	SV-1-T	MAS	-	Ø6	APS	S	EXST	EXST	-	
(D)	1-B	-	-	-	TV-1-T SV-1-T	-	SP-1-T	-	-	-	EXST	EXST	-	
(E)	61-5-100	60'	15'	310W	SV-1-T	3-MAS F=15'	-	-	-	-	EXST	EXST	Copper Lantern	
(F)	1-A	-	-	-	TV-1-T	-	-	-	-	-	EXST	EXST	-	
(G)	23-4-100	35'	-	200W	SV-2-TA	2-MAS F=14'	-	-	-	-	EXST	EXST	Copper Lantern	
(H)	15TS	-	12'	-	SV-1-T	-	SP-1-T	Ø2	APS	W	EXST	EXST	-	
(I)	1-A	-	-	-	TV-3-T	-	SP-2-T	Ø4	APS	E	EXST	EXST	-	
(J)	PPB POST	-	-	-	-	-	-	Ø2	APS	W	EXST	EXST	-	

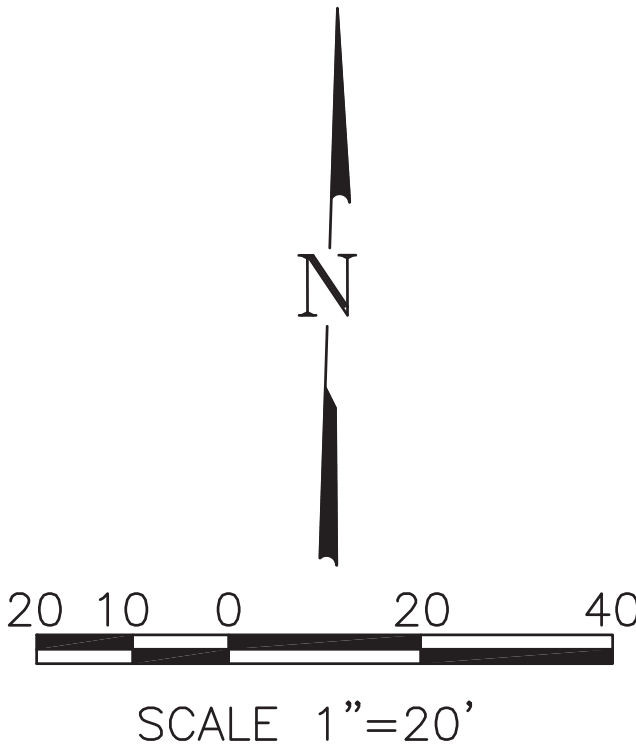
ALL EQUIPMENT IS EXISTING.

* = PEDESTRIAN INDICATION HEADS SHALL BE DIALITE COUNTDOWN HEADS, MUTCD COMPLIANT.
APS = ASSESSABLE PEDESTRIAN PUSH BUTTON, MUTCD AND ITE COMPLIANT.

CONDUCTOR SCHEDULE

AWG SIZE OR CABLE TYPE	POLE	PHASE	CONDUIT SIZE AND RUN					
			1	2	3	4	5	6
NO.14 CABLES 12 3	(A)	Ø1,Ø6,Ø6P /Ø4PPB	-	-	-	1	1	1
	(B)	Ø4,Ø4P /Ø6PPB	-	-	1	1	1	1
	(C)	Ø5 /Ø6PPB	-	-	-	-	1	1
	(D)	Ø3,Ø6,Ø6P /-	-	-	-	-	1	0
	(E)	Ø2,Ø4,Ø5 /-	-	-	-	-	-	1
	(F)	Ø4,Ø8 /-	-	-	-	-	-	1
	(G)	Ø3,Ø4,Ø8 /-	-	1	0	-	-	1
	(H)	Ø8,Ø2P /Ø2PPB	-	1	1	-	-	1
	(I)	Ø2,Ø2P,Ø4P /Ø4PPB	1	1	1	-	-	1
	(J)	- /Ø2PPB	0	1	0	-	-	0
TOTAL CABLES - 12 CON / 3 CON			1	2	3	1	2	4
#10	IISNS		-	2	-	2	2	-
	LUMINAIRES		-	2	-	2	2	-
#8	GROUND		1	1	1	1	1	1
	Ø1		-	-	-	-	1	1
	Ø2		1	1	-	-	-	1
	Ø3		-	2	-	-	-	2
	Ø4		-	-	2	2	2	2
	Ø5		1	1	-	-	-	1
	Ø6		-	-	-	-	2	2
	Ø8		-	2	-	-	-	2
TYPE "B" DLC	TOTAL		2	6	2	2	4	11
	CCTV		-	-	-	1	1	1
GTT MODEL 138 EVP			-	1	-	-	1	4
12PR #19 SIC			-	1	-	-	-	2
CONDUIT SIZES (INCHES)			2"	2"	2"	2"	2.5"	2-3"

ALL CONDUCTORS AND CONDUITS ARE EXISTING.
PPB = PED PUSH BUTTON



1	5/31/19	M.A. SIGN - REMOVED - NEEDED	CL	5/31/19
NO.	DATE	REVISIONS	APP.	DATE

PLAN PREPARED BY:



LINSCOTT, LAW & GREENSPAN, ENGINEERS
TRANSPORTATION PLANNING - TRAFFIC ENGINEERING - PARKING
a 600 South Lake Avenue, Suite 500, Pasadena, Ca 91106 (626) 796-2322
a 2 Executive Circle, Suite 250, Irvine, Ca 92614 (949) 825-8175
a 4542 Ruffner Street, Suite 100, San Diego, Ca 92111 (619) 300-8800



PLANS REVIEWED BY:
CITY OF DANA POINT, PUBLIC WORKS & ENGINEERING SERVICES

33282 GOLDEN LANTERN
DANA POINT, CA 92629

[Signature]
MATTHEW V. SINACORI
DIRECTOR OF PUBLIC WORKS/CITY ENGINEER
RCE #69239 EXP. 06/30/19

6/17/19
DATE

THIS PLAN IS SIGNED BY THE CITY ENGINEER FOR SCOPE AND ADHERENCE TO CITY STANDARDS AND REQUIREMENTS, CITY CODES, AND OTHER GENERAL ENGINEERING AND REGULATORY REQUIREMENTS ONLY. THE CITY ENGINEER IS NOT RESPONSIBLE FOR DESIGN, ASSUMPTIONS, OR ACCURACY.



TRAFFIC SIGNAL PLAN
COPPER LANTERN AT
PACIFIC COAST HIGHWAY

THE CITY OF DANA POINT
Public Works Department

PROJECT NO.
2-16-3741

SHEET 1
OF 1