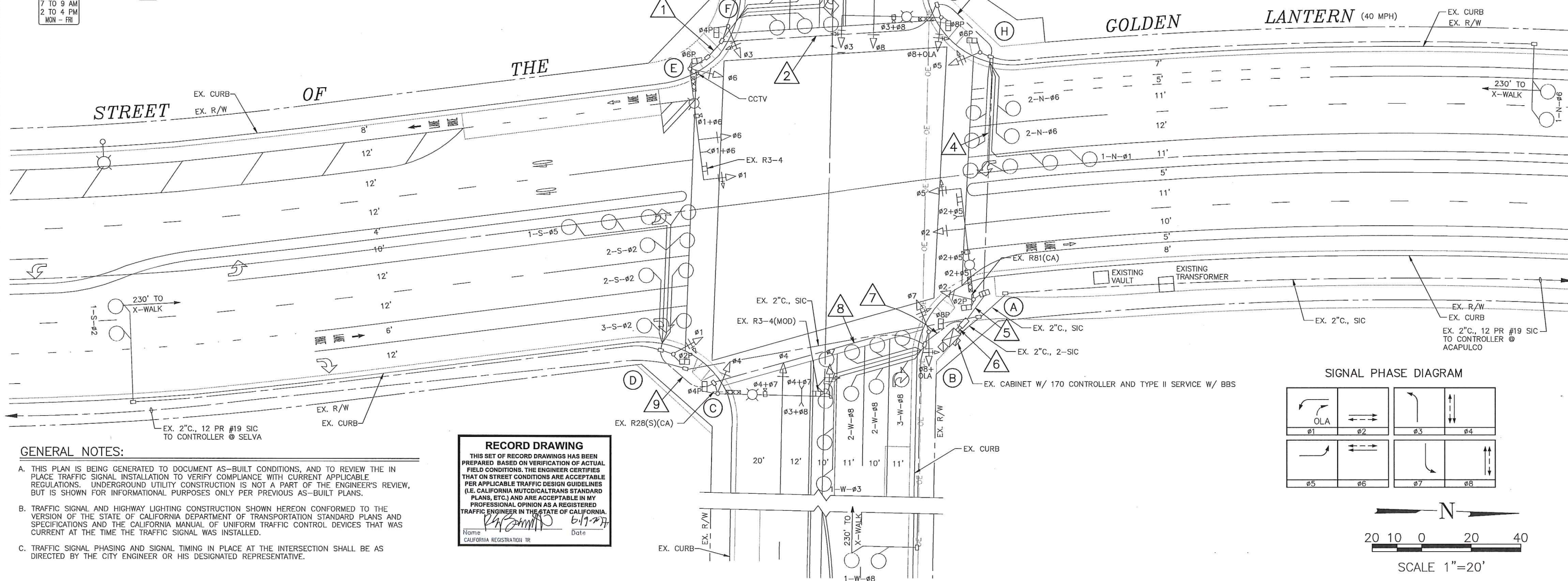
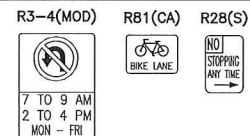


EQUIPMENT SCHEDULE												
LOCATION	SIGNAL STANDARD		H.P.S. LUMINAIRE SIZE/TYPE	MOUNTINGS			PEDESTRIAN PUSH BUTTON			POLE LOCATION		I.I.S.N.S.
	POLE TYPE	MAST ARM SIG.		VEHICLE	PEDESTRIAN		PHASE	TYPE	QUAD	A	B	
(A)	26-4-70	50'	15'	250W	SV-1-T	2-MAS F=20'	*SP-1-T	Ø8	B	S	EXISTING	Stonehill Dr
(B)	1-A	-	-	-	TV-2-T	-	*SP-1-T	Ø2	B	W	EXISTING	-
(C)	26-4-70	45'	15'	250W	SV-1-T	2-MAS F=19'	*SP-1-T	Ø2	B	W	EXISTING	Golden Lantern
(D)	1-A	-	-	-	TV-1-T	-	*SP-1-T	Ø4	A	N	EXISTING	-
(E)	26-4-70	50'	15'	250W	SV-1-T	2-MAS F=16'	*SP-1-T	Ø4	A	N	EXISTING	Stonehill Dr
(F)	1-A	-	-	-	TV-1-T	-	*SP-1-T	Ø6	B	E	EXISTING	-
(G)	26-4-70	40'	15'	250W	SV-1-T	2-MAS F=13'	*SP-1-T	Ø6	B	E	EXISTING	Golden Lantern
(H)	1-A	-	-	-	TV-1-T	-	*SP-1-T	Ø8	A	S	EXISTING	-

ALL EQUIPMENT IS EXISTING.

\* = PEDESTRIAN INDICATION HEADS SHALL BE DIALITE COUNTDOWN HEADS, MUTCD COMPLIANT.  
(A) = ANADODE PUSH BUTTON, (B) = BULL DOG PUSH BUTTON.

#### EXISTING SIGN ON THIS SHEET



#### GENERAL NOTES:

- THIS PLAN IS BEING GENERATED TO DOCUMENT AS-BUILT CONDITIONS, AND TO REVIEW THE IN PLACE TRAFFIC SIGNAL. INSTALLATION TO VERIFY COMPLIANCE WITH CURRENT APPLICABLE REGULATIONS. UNDERGROUND UTILITY CONSTRUCTION IS NOT A PART OF THE ENGINEER'S REVIEW, BUT IS SHOWN FOR INFORMATIONAL PURPOSES ONLY PER PREVIOUS AS-BUILT PLANS.
- TRAFFIC SIGNAL AND HIGHWAY LIGHTING CONSTRUCTION SHOWN HEREON CONFORMED TO THE VERSION OF THE STATE OF CALIFORNIA DEPARTMENT OF TRANSPORTATION STANDARD PLANS AND SPECIFICATIONS AND THE CALIFORNIA MANUAL OF UNIFORM TRAFFIC CONTROL DEVICES THAT WAS CURRENT AT THE TIME THE TRAFFIC SIGNAL WAS INSTALLED.
- TRAFFIC SIGNAL PHASING AND SIGNAL TIMING IN PLACE AT THE INTERSECTION SHALL BE AS DIRECTED BY THE CITY ENGINEER OR HIS DESIGNATED REPRESENTATIVE.

#### RECORD DRAWING

THIS SET OF RECORD DRAWINGS HAS BEEN PREPARED BASED ON VERIFICATION OF ACTUAL FIELD CONDITIONS. THE ENGINEER CERTIFIES THAT ON STREET CONDITIONS ARE ACCEPTABLE PER APPLICABLE TRAFFIC DESIGN GUIDELINES (I.E. CALIFORNIA MUTCD/CALTRANS STANDARD PLANS, ETC.) AND ARE ACCEPTABLE IN MY PROFESSIONAL OPINION AS A REGISTERED TRAFFIC ENGINEER IN THE STATE OF CALIFORNIA.

Name: *[Signature]* Date: 6/19/17  
CALIFORNIA REGISTRATION NO. 12

PLAN PREPARED BY:

LINSCOTT, LAW & GREENSPAN, ENGINEERS  
TRANSPORTATION PLANNING - TRAFFIC ENGINEERING - PARKING  
600 South Lake Avenue, Suite 500, Pasadena, CA 91106 (626) 796-2322  
2 Executive Circle, Suite 250, Irvine, CA 92614 (949) 825-6175  
4542 Ruffin Street, Suite 100, San Diego, CA 92111 (619) 300-8800



PLANS REVIEWED BY:  
CITY OF DANA POINT, PUBLIC WORKS & ENGINEERING SERVICES  
33282 GOLDEN LANTERN  
DANA POINT, CA 92629

MATTHEW V. SINACORI, CITY ENGINEER  
RCE #59239 EXP. 06/30/17  
THIS PLAN IS SIGNED BY THE CITY ENGINEER FOR SCOPE AND ADHERENCE TO CITY STANDARDS AND REQUIREMENTS, CITY CODES, AND OTHER GENERAL ENGINEERING AND REGULATORY REQUIREMENTS ONLY. THE CITY ENGINEER IS NOT RESPONSIBLE FOR DESIGN, ASSUMPTIONS, OR ACCURACY.



TRAFFIC SIGNAL PLAN  
GOLDEN LANTERN AT  
STONEHILL DRIVE

THE CITY OF DANA POINT  
Public Works Department

PROJECT NO.  
2-16-3741

SHEET 1  
OF 1

NO.	DATE	REVISIONS	APP.	DATE