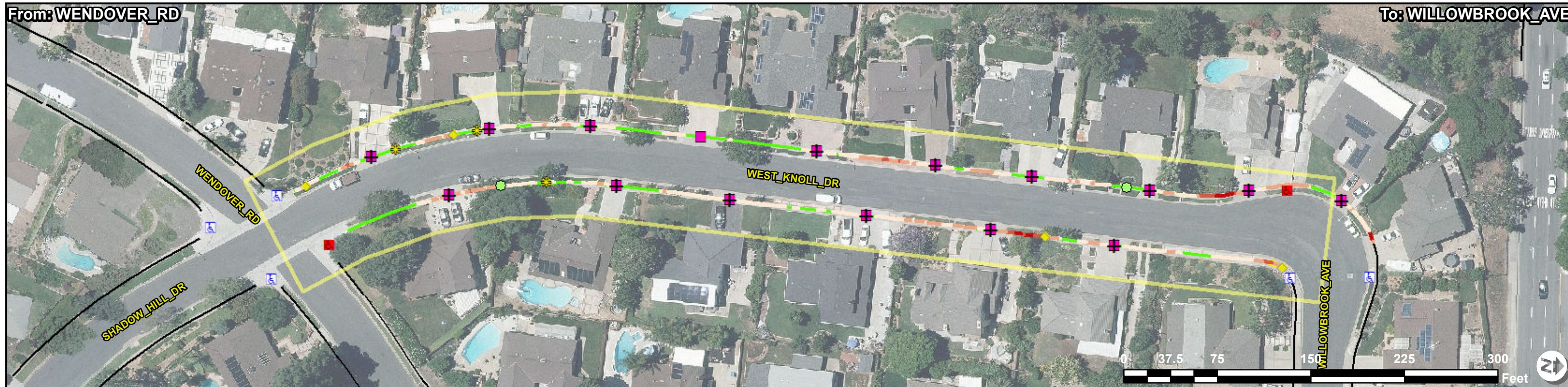




Access Compliance Report - Public Rights-of-Way (Corridor: Sidewalk & Intersection Items)

Corridor ID: WEST_KNOLL_DR_001



ADA Survey Summary

Item	Description	Quantity	EA	SY	LF	IN
1	Vertical Displacement <= 1"	7	EA			
2	Vertical Displacement > 1"	0	EA			
3	Uneven Vertical Displacement	0	EA			
4	Horizontal Opening > 0.5"	0	EA			
5	Poor Surface Condition	3	SY			
6	Utility Obstruction	0	EA			
7	Power Pole Obstruction	0	EA			
8	Traffic Signal Obstruction	0	EA			
9	Sign Obstruction	0	EA			
10	Low Vegetative Obstruction	2	EA			
11	Overhead Vegetative Obstruction	0	EA			
12	Other Obstruction*	0	EA			
13	Miscellaneous Obstruction	0	EA			
14	Temp/Private Obstruction	0	EA			
15	Commercial Driveway	0	LF			
16	Residential Driveway	339	LF			
17	Total Sidewalk Length Assessed	1653	LF			
18	Average Sidewalk Width	48	IN			
19	Curb Ramps In Corridor	2	EA			
20	Island Curb Cuts In Corridor	0	EA			
21	Signal Push Buttons In Corridor	0	EA			
22	Accessible Parking Spaces In Corridor	0	EA			
23	Missing Sidewalk/Gaps in Connectivity	0	LF			
24	Buried/Narrow Sidewalk	0	LF			
25	Sidewalk Not Surveyed	0	LF			
26	No Sidewalk Observed	0	LF			
27	Corridor Severity Score	20.08				

Google Street View Link
http://www.google.com/maps/@?api=1&map_action=pano&viewpoint=33.88698005,-117.79676857

ADA Compliance Cost Estimate **

Item	Description	Quantity	Unit	Unit Price	Item Cost
1	Vertical Displacement <= 1"	3	EA	\$150.00	\$ 450.00
2	Vertical Displacement > 1"	0	EA	\$2125.00	\$ 0.00
3	Uneven Vertical Displacement	0	EA	\$2125.00	\$ 0.00
4	Horizontal Opening > 0.5"	0	EA	\$1062.00	\$ 0.00
5	Poor Surface Condition	0	SY	\$255.50	\$ 0.00
6	Utility Obstruction	0	EA	\$5000.00	\$ 0.00
7	Power Pole Obstruction	0	EA	\$20000.00	\$ 0.00
8	Traffic Signal Obstruction	0	EA	\$5000.00	\$ 0.00
9	Sign Obstruction	0	EA	\$2000.00	\$ 0.00
10	Low Vegetative Obstruction	2	EA	\$200.00	\$ 400.00
11	Overhead Vegetative Obstruction	0	EA	\$400.00	\$ 0.00
12	Other Obstruction*	0	EA	\$2000.00	\$ 0.00
13	Miscellaneous Obstruction	0	EA	\$2000.00	\$ 0.00
14	Commercial Driveway	0	LF	\$118.00	\$ 0.00
15	Residential Driveway	315	LF	\$118.00	\$ 37173.00
16	Running Slope Violation	0	SY	\$255.50	\$ 0.00
17	Cross Slope Violation	383	SY	\$255.50	\$ 98067.00
18	Running and Cross Slope violations	0	SY	\$255.50	\$ 0.00
19	Non-Compliant Curb Ramps and Total Cost*	2	EA	VARIABLES	\$ 9240.00
20	Non-Compliant Island Curb Cuts and Total Cost*	0	EA	VARIABLES	\$ 0.00
21	Non-Compliant Signal Push Buttons Cuts and Total Cost*	0	EA	VARIABLES	\$ 0.00
22	Non-Compliant Accessible Parking Spaces and Total Cost*	0	EA	VARIABLES	\$ 0.00
23	Missing Sidewalk/Gap in Connectivity	0	SY	\$150.00	\$ 0.00
24	Buried/Narrow Sidewalk	0	SY	\$255.50	\$ 0.00
Total:					\$ 145,331.00

Compliance Symbolology	
	Compliant Curb Ramp
	Non-Compliant Curb Ramp
	Compliant Island Curb Cut
	Non-Compliant Island Curb Cut
	Compliant Signal
	Non-Compliant Signal
	Running Slope (Deviated, Costed)
	5.1 – 8.3%
	8.4 – 10.0%
	10.1 – 12.5%
	12.5%+

*Note: Some items combined for display. See Unit Cost Table for specific unit costs for each type of obstruction, curb ramp, island curb cut. Missing sidewalk/gaps in connectivity reported together in compliance report and are separate in the GIS layers.
 **Note: ADA pedestrian issues have been identified and quantified in the ADA Survey Summary. There are instances where multiple issues can be resolved with a single corrective measure. The ADA Compliance Cost Estimate reflects the best estimation of quantities and cost to resolve all identified ADA issues.