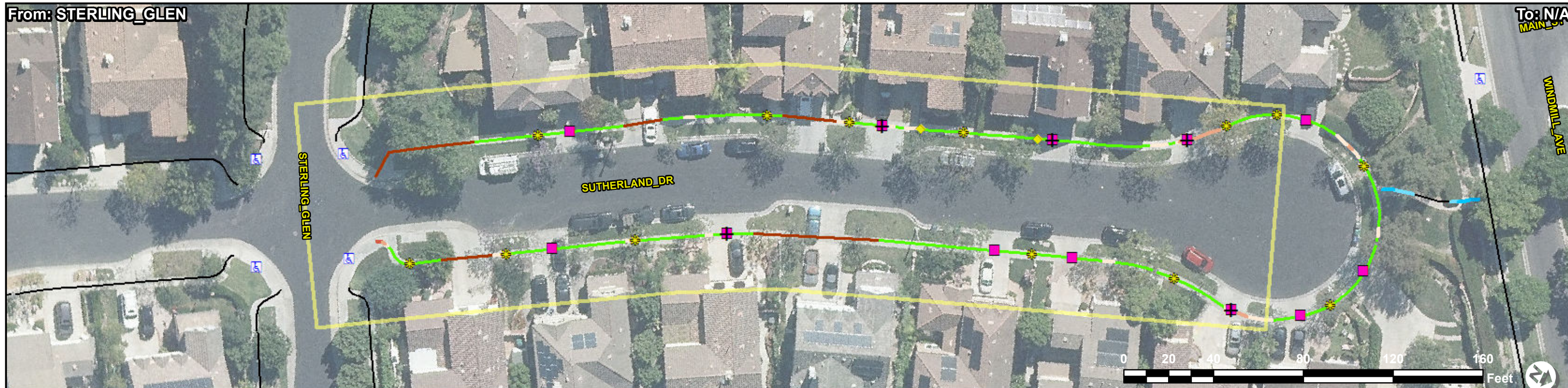


From: STERLING\_GLEN

To: N/A  
MAIN ST



### ADA Survey Summary

Item	Description	Quantity	EA
1	Vertical Displacement <= 1"	15	EA
2	Vertical Displacement > 1"	0	EA
3	Uneven Vertical Displacement	0	EA
4	Horizontal Opening > 0.5"	0	EA
5	Poor Surface Condition	0	SY
6	Utility Obstruction	0	EA
7	Power Pole Obstruction	0	EA
8	Traffic Signal Obstruction	0	EA
9	Sign Obstruction	0	EA
10	Low Vegetative Obstruction	0	EA
11	Overhead Vegetative Obstruction	0	EA
12	Other Obstruction*	0	EA
13	Miscellaneous Obstruction	0	EA
14	Temp/Private Obstruction	0	EA
15	Commercial Driveway	0	LF
16	Residential Driveway	190	LF
17	Total Sidewalk Length Assessed	790	LF
18	Average Sidewalk Width	54	IN
19	Curb Ramps In Corridor	0	EA
20	Island Curb Cuts In Corridor	0	EA
21	Signal Push Buttons In Corridor	0	EA
22	Accessible Parking Spaces In Corridor	0	EA
23	Missing Sidewalk/Gaps in Connectivity	0	LF
24	Buried/Narrow Sidewalk	0	LF
25	Sidewalk Not Surveyed	171	LF
26	No Sidewalk Observed	0	LF
27	Corridor Severity Score	0.68	

Google Street View Link

[http://www.google.com/maps/@?api=1&map\\_action=pano&viewpoint=33.55890382,-117.63228819](http://www.google.com/maps/@?api=1&map_action=pano&viewpoint=33.55890382,-117.63228819)

### ADA Compliance Cost Estimate \*\*

Item	Description	Quantity	Unit	Unit Price	Item Cost
1	Vertical Displacement <= 1"	13	EA	\$150.00	\$ 1950.00
2	Vertical Displacement > 1"	0	EA	\$2125.00	\$ 0.00
3	Uneven Vertical Displacement	0	EA	\$2125.00	\$ 0.00
4	Horizontal Opening > 0.5"	0	EA	\$1062.00	\$ 0.00
5	Poor Surface Condition	0	SY	\$255.50	\$ 0.00
6	Utility Obstruction	0	EA	\$5000.00	\$ 0.00
7	Power Pole Obstruction	0	EA	\$20000.00	\$ 0.00
8	Traffic Signal Obstruction	0	EA	\$5000.00	\$ 0.00
9	Sign Obstruction	0	EA	\$2000.00	\$ 0.00
10	Low Vegetative Obstruction	0	EA	\$200.00	\$ 0.00
11	Overhead Vegetative Obstruction	0	EA	\$400.00	\$ 0.00
12	Other Obstruction*	0	EA	\$2000.00	\$ 0.00
13	Miscellaneous Obstruction	0	EA	\$2000.00	\$ 0.00
14	Commercial Driveway	0	LF	\$118.00	\$ 0.00
15	Residential Driveway	80	LF	\$118.00	\$ 9473.00
16	Running Slope Violation	0	SY	\$255.50	\$ 0.00
17	Cross Slope Violation	38	SY	\$255.50	\$ 9917.00
18	Running and Cross Slope violations	0	SY	\$255.50	\$ 0.00
19	Non-Compliant Curb Ramps and Total Cost*	0	EA	VARIABLES	\$ 0.00
20	Non-Compliant Island Curb Cuts and Total Cost*	0	EA	VARIABLES	\$ 0.00
21	Non-Compliant Signal Push Buttons Cuts and Total Cost*	0	EA	VARIABLES	\$ 0.00
22	Non-Compliant Accessible Parking Spaces and Total Cost*	0	EA	VARIABLES	\$ 0.00
23	Missing Sidewalk/Gap in Connectivity	0	SY	\$150.00	\$ 0.00
24	Buried/Narrow Sidewalk	0	SY	\$255.50	\$ 0.00
<b>Total:</b>					<b>\$ 21,340.00</b>

#### Compliance Symbolology

	Compliant Curb Ramp
	Non-Compliant Curb Ramp
	Compliant Island Curb Cut
	Non-Compliant Island Curb Cut
	Compliant Signal
	Non-Compliant Signal
	Cross Slope
	2.01 - 3.0%
	3.01 - 4.0%
	4.01 - 5.0%
	5.01%+
	Running Slope (Deviated, Costed)
	5.1 - 8.3%
	8.4 - 10.0%
	10.1 - 12.5%
	12.5%+

\*Note: Some items combined for display. See Unit Cost Table for specific unit costs for each type of obstruction, curb ramp, island curb cut. Missing sidewalk/gaps in connectivity reported together in compliance report and are separate in the GIS layers.  
\*\*Note: ADA pedestrian issues have been identified and quantified in the ADA Survey Summary. There are instances where multiple issues can be resolved with a single corrective measure. The ADA Compliance Cost Estimate reflects the best estimation of quantities and cost to resolve all identified ADA issues.