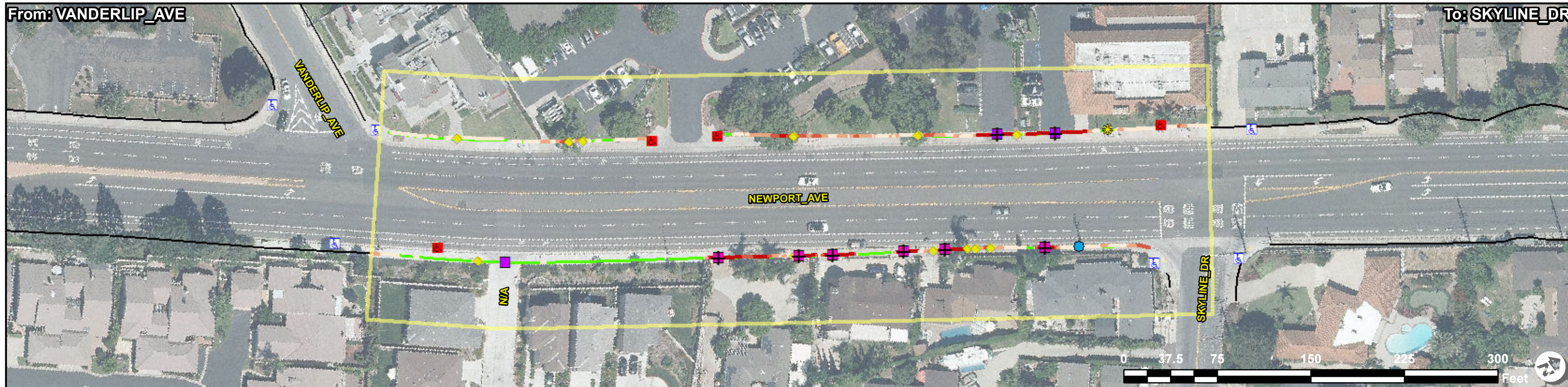




Access Compliance Report - Public Rights-of-Way (Corridor: Sidewalk & Intersection Items)

Corridor ID: NEWPORT_AVE_018



ADA Survey Summary

| Item | Description | Quantity | EA |
|------|---------------------------------------|----------|----|
| 1 | Vertical Displacement <= 1" | 13 | EA |
| 2 | Vertical Displacement > 1" | 0 | EA |
| 3 | Uneven Vertical Displacement | 0 | EA |
| 4 | Horizontal Opening > 0.5" | 0 | EA |
| 5 | Poor Surface Condition | 0 | SY |
| 6 | Utility Obstruction | 0 | EA |
| 7 | Power Pole Obstruction | 1 | EA |
| 8 | Traffic Signal Obstruction | 0 | EA |
| 9 | Sign Obstruction | 0 | EA |
| 10 | Low Vegetative Obstruction | 0 | EA |
| 11 | Overhead Vegetative Obstruction | 0 | EA |
| 12 | Other Obstruction* | 0 | EA |
| 13 | Miscellaneous Obstruction | 0 | EA |
| 14 | Temp/Private Obstruction | 0 | EA |
| 15 | Commercial Driveway | 108 | LF |
| 16 | Residential Driveway | 128 | LF |
| 17 | Total Sidewalk Length Assessed | 1210 | LF |
| 18 | Average Sidewalk Width | 87 | IN |
| 19 | Curb Ramps In Corridor | 4 | EA |
| 20 | Island Curb Cuts In Corridor | 0 | EA |
| 21 | Signal Push Buttons In Corridor | 0 | EA |
| 22 | Accessible Parking Spaces In Corridor | 0 | EA |
| 23 | Missing Sidewalk/Gaps in Connectivity | 0 | LF |
| 24 | Buried/Narrow Sidewalk | 0 | LF |
| 25 | Sidewalk Not Surveyed | 0 | LF |
| 26 | No Sidewalk Observed | 0 | LF |
| 27 | Corridor Severity Score | 121.69 | |

Google Street View Link
http://www.google.com/maps/@?api=1&map_action=pano&viewpoint=33.757045,-117.8033719

Inventory Symbology

| | |
|---|-------------------------------------|
| ◆ | Running Slope (Aligned, Not Costed) |
| ◆ | 5.1 – 8.3% |
| ◆ | 8.4 – 10.0% |
| ◆ | 10.1 – 12.5% |
| ◆ | 12.5%+ |
| ● | Collection in Adjacent Corridors |
| Ⓜ | Curb Ramps |
| Ⓜ | Island Curb Cuts |
| Ⓜ | Signal Push Buttons |
| — | Sidewalk Collection |

ADA Compliance Cost Estimate **

| Item | Description | Quantity | Unit | Unit Price | Item Cost |
|---------------|---|----------|------|------------|----------------------|
| 1 | Vertical Displacement <= 1" | 1 | EA | \$150.00 | \$ 150.00 |
| 2 | Vertical Displacement > 1" | 0 | EA | \$2125.00 | \$ 0.00 |
| 3 | Uneven Vertical Displacement | 0 | EA | \$2125.00 | \$ 0.00 |
| 4 | Horizontal Opening > 0.5" | 0 | EA | \$1062.00 | \$ 0.00 |
| 5 | Poor Surface Condition | 0 | SY | \$255.50 | \$ 0.00 |
| 6 | Utility Obstruction | 0 | EA | \$5000.00 | \$ 0.00 |
| 7 | Power Pole Obstruction | 1 | EA | \$20000.00 | \$ 20000.00 |
| 8 | Traffic Signal Obstruction | 0 | EA | \$5000.00 | \$ 0.00 |
| 9 | Sign Obstruction | 0 | EA | \$2000.00 | \$ 0.00 |
| 10 | Low Vegetative Obstruction | 0 | EA | \$200.00 | \$ 0.00 |
| 11 | Overhead Vegetative Obstruction | 0 | EA | \$400.00 | \$ 0.00 |
| 12 | Other Obstruction* | 0 | EA | \$2000.00 | \$ 0.00 |
| 13 | Miscellaneous Obstruction | 0 | EA | \$2000.00 | \$ 0.00 |
| 14 | Commercial Driveway | 83 | LF | \$118.00 | \$ 9814.00 |
| 15 | Residential Driveway | 128 | LF | \$118.00 | \$ 15159.00 |
| 16 | Running Slope Violation | 0 | SY | \$255.50 | \$ 0.00 |
| 17 | Cross Slope Violation | 539 | SY | \$255.50 | \$ 137916.00 |
| 18 | Running and Cross Slope violations | 0 | SY | \$255.50 | \$ 0.00 |
| 19 | Non-Compliant Curb Ramps and Total Cost* | 4 | EA | VARIABLES | \$ 11642.00 |
| 20 | Non-Compliant Island Curb Cuts and Total Cost* | 0 | EA | VARIABLES | \$ 0.00 |
| 21 | Non-Compliant Signal Push Buttons Cuts and Total Cost* | 0 | EA | VARIABLES | \$ 0.00 |
| 22 | Non-Compliant Accessible Parking Spaces and Total Cost* | 0 | EA | VARIABLES | \$ 0.00 |
| 23 | Missing Sidewalk/Gap in Connectivity | 0 | SY | \$150.00 | \$ 0.00 |
| 24 | Buried/Narrow Sidewalk | 0 | SY | \$255.50 | \$ 0.00 |
| Total: | | | | | \$ 194,682.00 |

Compliance Symbology

| | |
|---|----------------------------------|
| Ⓜ | Compliant Curb Ramp |
| Ⓜ | Non-Compliant Curb Ramp |
| Ⓜ | Compliant Island Curb Cut |
| Ⓜ | Non-Compliant Island Curb Cut |
| Ⓜ | Compliant Signal |
| Ⓜ | Non-Compliant Signal |
| ● | Cross Slope |
| ● | 2.01 - 3.0% |
| ● | 3.01 - 4.0% |
| ● | 4.01 - 5.0% |
| ● | 5.01%+ |
| ◆ | Running Slope (Deviated, Costed) |
| ◆ | 5.1 – 8.3% |
| ◆ | 8.4 – 10.0% |
| ◆ | 10.1 – 12.5% |
| ◆ | 12.5%+ |

*Note: Some items combined for display. See Unit Cost Table for specific unit costs for each type of obstruction, curb ramp, island curb cut. Missing sidewalk/gaps in connectivity reported together in compliance report and are separate in the GIS layers.
 **Note: ADA pedestrian issues have been identified and quantified in the ADA Survey Summary. There are instances where multiple issues can be resolved with a single corrective measure. The ADA Compliance Cost Estimate reflects the best estimation of quantities and cost to resolve all identified ADA issues.