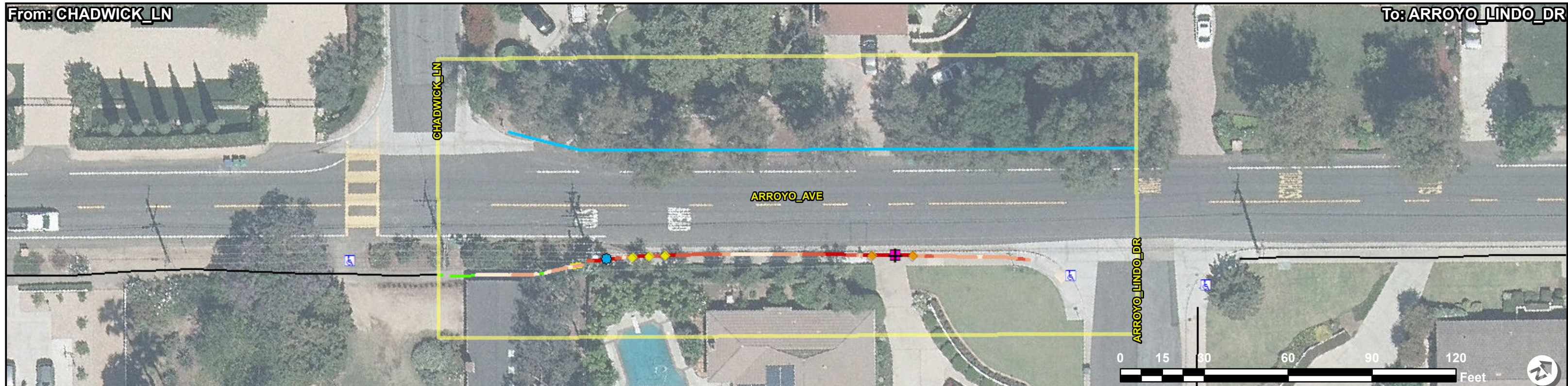




# Access Compliance Report - Public Rights-of-Way (Corridor: Sidewalk & Intersection Items)

Corridor ID: ARROYO\_AVE\_011



## ADA Survey Summary

Item	Description	Quantity	Unit
1	Vertical Displacement <= 1"	3	EA
2	Vertical Displacement > 1"	2	EA
3	Uneven Vertical Displacement	0	EA
4	Horizontal Opening > 0.5"	0	EA
5	Poor Surface Condition	1	SY
6	Utility Obstruction	0	EA
7	Power Pole Obstruction	1	EA
8	Traffic Signal Obstruction	0	EA
9	Sign Obstruction	0	EA
10	Low Vegetative Obstruction	0	EA
11	Overhead Vegetative Obstruction	0	EA
12	Other Obstruction*	0	EA
13	Miscellaneous Obstruction	0	EA
14	Temp/Private Obstruction	0	EA
15	Commercial Driveway	0	LF
16	Residential Driveway	20	LF
17	Total Sidewalk Length Assessed	207	LF
18	Average Sidewalk Width	50	IN
19	Curb Ramps In Corridor	0	EA
20	Island Curb Cuts In Corridor	0	EA
21	Signal Push Buttons In Corridor	0	EA
22	Accessible Parking Spaces In Corridor	0	EA
23	Missing Sidewalk/Gaps in Connectivity	0	LF
24	Buried/Narrow Sidewalk	0	LF
25	Sidewalk Not Surveyed	0	LF
26	No Sidewalk Observed	225	LF
27	Corridor Severity Score	38.89	

### Inventory Symbology

◆	Running Slope (Aligned, Not Costed)
—	5.1 – 8.3%
—	8.4 – 10.0%
—	10.1 – 12.5%
—	12.5%+
●	Collection in Adjacent Corridors
♿	Curb Ramps
Ⓜ	Island Curb Cuts
Ⓜ	Signal Push Buttons
—	Sidewalk Collection

## ADA Compliance Cost Estimate \*\*

Item	Description	Quantity	Unit	Unit Price	Item Cost
1	Vertical Displacement <= 1"	0	EA	\$150.00	\$ 0.00
2	Vertical Displacement > 1"	0	EA	\$2125.00	\$ 0.00
3	Uneven Vertical Displacement	0	EA	\$2125.00	\$ 0.00
4	Horizontal Opening > 0.5"	0	EA	\$1062.00	\$ 0.00
5	Poor Surface Condition	0	SY	\$255.50	\$ 0.00
6	Utility Obstruction	0	EA	\$5000.00	\$ 0.00
7	Power Pole Obstruction	1	EA	\$20000.00	\$ 20000.00
8	Traffic Signal Obstruction	0	EA	\$5000.00	\$ 0.00
9	Sign Obstruction	0	EA	\$2000.00	\$ 0.00
10	Low Vegetative Obstruction	0	EA	\$200.00	\$ 0.00
11	Overhead Vegetative Obstruction	0	EA	\$400.00	\$ 0.00
12	Other Obstruction*	0	EA	\$2000.00	\$ 0.00
13	Miscellaneous Obstruction	0	EA	\$2000.00	\$ 0.00
14	Commercial Driveway	0	LF	\$118.00	\$ 0.00
15	Residential Driveway	20	LF	\$118.00	\$ 2415.00
16	Running Slope Violation	0	SY	\$255.50	\$ 0.00
17	Cross Slope Violation	80	SY	\$255.50	\$ 20595.00
18	Running and Cross Slope violations	3	SY	\$255.50	\$ 987.00
19	Non-Compliant Curb Ramps and Total Cost*	0	EA	VARIABLES	\$ 0.00
20	Non-Compliant Island Curb Cuts and Total Cost*	0	EA	VARIABLES	\$ 0.00
21	Non-Compliant Signal Push Buttons Cuts and Total Cost*	0	EA	VARIABLES	\$ 0.00
22	Non-Compliant Accessible Parking Spaces and Total Cost*	0	EA	VARIABLES	\$ 0.00
23	Missing Sidewalk/Gap in Connectivity	0	SY	\$150.00	\$ 0.00
24	Buried/Narrow Sidewalk	0	SY	\$255.50	\$ 0.00
<b>Total:</b>					<b>\$ 43,998.00</b>

### Compliance Symbology

♿	Compliant Curb Ramp
Ⓜ	Non-Compliant Curb Ramp
Ⓜ	Compliant Island Curb Cut
Ⓜ	Non-Compliant Island Curb Cut
Ⓜ	Compliant Signal
Ⓜ	Non-Compliant Signal
●	Collection in Adjacent Corridors
●	Cross Slope
—	2.01 - 3.0%
—	3.01 - 4.0%
—	4.01 - 5.0%
—	5.01%+
—	Running Slope (Deviated, Costed)
—	5.1 – 8.3%
—	8.4 – 10.0%
—	10.1 – 12.5%
—	12.5%+

Google Street View Link

[http://www.google.com/maps/@?api=1&map\\_action=pano&viewpoint=33.75972484,-117.79496992](http://www.google.com/maps/@?api=1&map_action=pano&viewpoint=33.75972484,-117.79496992)

\*Note: Some items combined for display. See Unit Cost Table for specific unit costs for each type of obstruction, curb ramp, island curb cut. Missing sidewalk/gaps in connectivity reported together in compliance report and are separate in the GIS layers.  
\*\*Note: ADA pedestrian issues have been identified and quantified in the ADA Survey Summary. There are instances where multiple issues can be resolved with a single corrective measure. The ADA Compliance Cost Estimate reflects the best estimation of quantities and cost to resolve all identified ADA issues.