

County of Orange



SANTA ANA, CALIFORNIA

SHANE L. SILSBY, DIRECTOR

PLANS FOR CONSTRUCTION OF

MASON REGIONAL PARK BRIDGE OVER SAND CANYON WASH BRIDGE PREVENTATIVE MAINTENANCE

BR. No. 55C0477

W.O. NO. ER 20563
AUGUST 2019

FUNDED BY: SENATE BILL 1(SB-1)
MAINTAINED BY: COUNTY OF ORANGE

2015 CALTRANS STANDARD PLANS

- A3A ABBREVIATIONS (SHEET 1 OF 3)
- A3B ABBREVIATIONS (SHEET 2 OF 3)
- A3C ABBREVIATIONS (SHEET 3 OF 3)

GENERAL NOTES:

CONTACT DIGALERT AT 1(800)422-4133 BEFORE BEGINNING WORK.

ALL NATIVE BIRDS ARE PROTECTED FROM DISTURBANCE WHILE NESTING. AS FAR AS POSSIBLE, CONSTRUCTION ACTIVITIES SHOULD TAKE PLACE OUTSIDE OF THE BIRD NESTING SEASON (FEBRUARY 1ST THROUGH SEPTEMBER 15TH). HOWEVER, IF OTHER RESTRICTIONS MAKE IT IMPOSSIBLE TO AVOID THE NESTING SEASON, THE REGULATORY PERMITTING TEAM AT OCPW MUST BE CONTACTED AT (714) 647-3933 TO ARRANGE FOR PRE-CONSTRUCTION NESTING BIRD SURVEYS OF THE CONSTRUCTION AREAS AT LEAST 7 DAYS BEFORE THE START OF WORK. DISTURBANCE TO ANY ACTIVE NESTS MUST BE AVOIDED. CONSTRUCTION ACTIVITY WITHIN 300 FEET OF AN ACTIVE NEST (500 FEET FOR RAPTORS) SHOULD BE DELAYED UNTIL THE NEST IS NO LONGER ACTIVE, OR OTHERWISE APPROVED BY THE REGULATORY PERMITTING TEAM OR THEIR REPRESENTATIVE.

ANY CRACKS OR CREVICES, VOIDS OR HOLES IN BRIDGES, TREES, BUILDINGS OR OTHER STRUCTURES HAVE THE POTENTIAL TO SUPPORT ROOSTING BATS. THE REGULATORY PERMITTING TEAM MUST BE CONTACTED AT (714) 647-3933 AT LEAST 7 DAYS BEFORE THE START OF WORK TO CONDUCT A BAT SURVEY.

COUNTY OF ORANGE PUBLIC WORKS DEPARTMENT

SUBMITTED: *Regina Hu* 8/28/19 DATE
REGINA HU, P.E.
SENIOR CIVIL ENGINEER
OC INFRASTRUCTURE PROGRAMS
ENGINEERING DIVISION

RECOMMENDED: *[Signature]* 8/28/19 DATE
PAUL JEFFREY ERNST, P.E.
MANAGER
OC INFRASTRUCTURE PROGRAMS
ENGINEERING DIVISION

RECOMMENDED: *Nardy Khan* 8-28-19 DATE
NARDY KHAN, P.E.
DEPUTY DIRECTOR
OC INFRASTRUCTURE PROGRAMS

APPROVED: *Khalid Bazmi* 8/28/19 DATE
KHALID BAZMI, P.E.
ASSISTANT PUBLIC WORKS DIRECTOR
COUNTY ENGINEER

RECORD DRAWING

CONTRACTOR: _____

RESIDENT ENGINEER: _____

INSPECTOR: _____

CONSTRUCTION START DATE: _____

CONSTRUCTION COMPLETION DATE: _____

PREPARED BY

PREPARED UNDER RESPONSIBLE CHARGE OF:
NCM ENGINEERING CORP.
22362 GILBERTO
RANCHO SANTA MARGARITA, CA 92688

[Signature] 8/21/19 DATE
MARK STILLER, P.E.

INDEX OF SHEETS

SHEET	REF	DESCRIPTION
1	T1	TITLE SHEET
2	S1	GENERAL PLAN
3	S2	SPALL & CRACK REPAIR DETAILS

NO.	DESCRIPTION	SHT.	APPROVED	DATE

REVISIONS



MARK	DESCRIPTION	DATE	APPR.

PREPARED UNDER THE RESPONSIBLE CHARGE OF:

CIVIL ENGINEER * WINDING * REGISTERED
 MARK STILLER
 No. 57893
 Exp. 08/2020
 CIVIL

DATE: 8/21/19

DESIGNED BY: M. STILLER
 DRAWN BY: R. ANDRASEK
 CHECKED BY: M. CHAR
 DRAWING CODE:

FILE NAME: 03 MASON PK.DWG
 PLOT DATE: 8/21/19
 SCALE: AS SHOWN

COUNTY OF ORANGE
 OC PUBLIC WORKS

NCM ENGINEERING CORP.
 22362 GILBERTO
 RANCHO SANTA MARGARITA
 CALIFORNIA, 92688

MASON REGIONAL PARK BRIGDE
 OVER SAND CANYON WASH
 PREVENTATIVE MAINTENANCE
 Br. No. 55C0477

**SPALL & CRACK
 REPAIR DETAILS**

Sheet
 Reference
 Number

S2

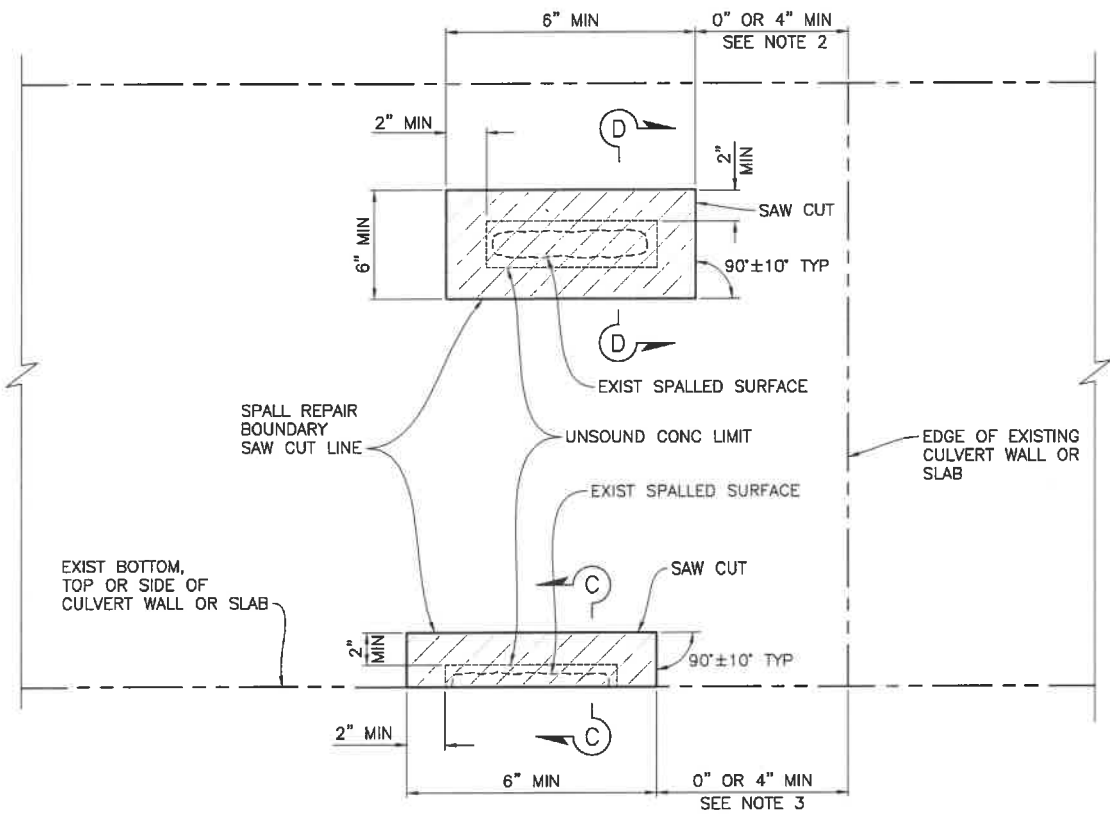
Sheet 3 of 3

LEGEND

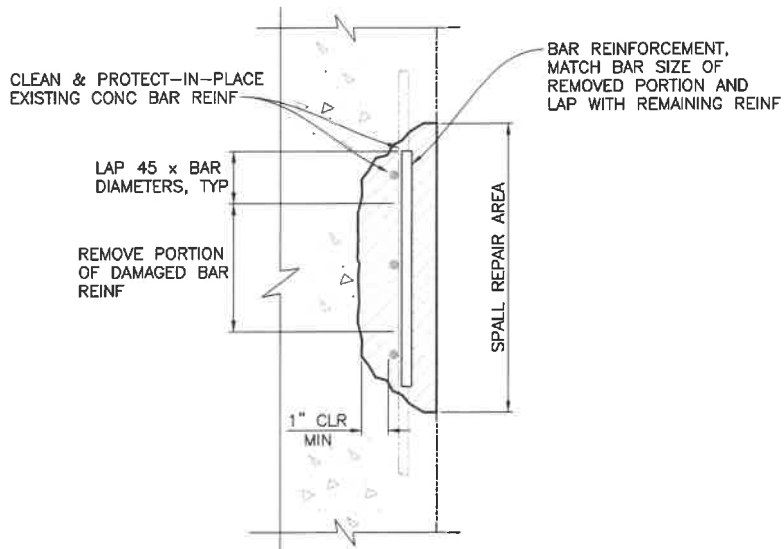
- MORTAR SPALL REPAIR
- INDICATES EXISTING

NOTES:

- SEE "GENERAL PLAN" SHEET FOR SPALL REPAIR LOCATIONS. SEE SPECIFICATION F-46.
- IF SPALL REPAIR AREA IS LESS THAN 4" FROM AN EDGE, EXTEND THE REPAIR TO THE JOINT.
- PROTECT EXISTING REINFORCING IN-PLACE. WHERE DAMAGED REINFORCEMENT IS FOUND, REPLACE AS SHOWN IN "TYPICAL SPALL REPAIR WITH BAR REINFORCEMENT REPLACEMENT" DETAIL.
- INJECT EPOXY INTO CRACKS HAVING A CRACK WIDTH OF 0.050" OR GREATER. IF CRACKS HAVE A CRACK WIDTH 0.050" OR GREATER AND ALSO HAVE PORTIONS LESS THAN 0.050" IN WIDTH, INJECT EPOXY IN ALL PORTIONS OF THE CRACK DOWN TO 0.010" IN WIDTH. SEE SPECIFICATION F-45.
- FOR CRACKS GREATER THAN 0.250" IN WIDTH, CONSIDER AS A SPALL AND REPAIR PER DETAILS HEREON. SEE SPECIFICATION F-46.

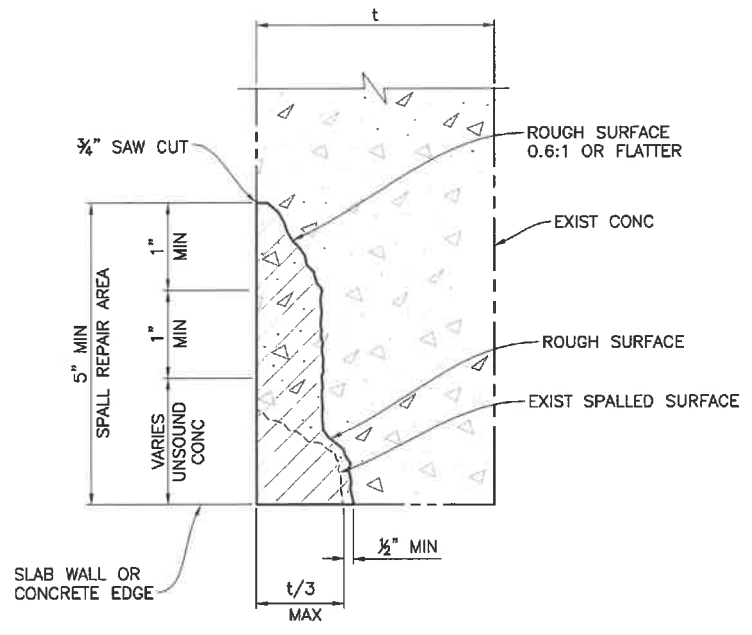


ELEVATION
NO SCALE

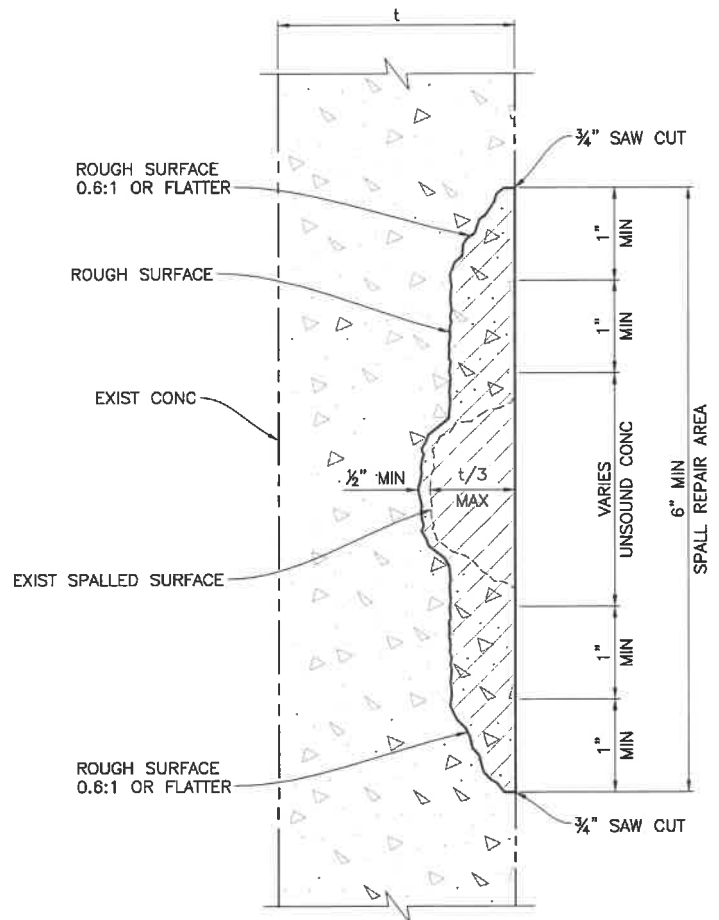


**TYPICAL SPALL REPAIR WITH
 BAR REINFORCEMENT REPLACEMENT**
NO SCALE

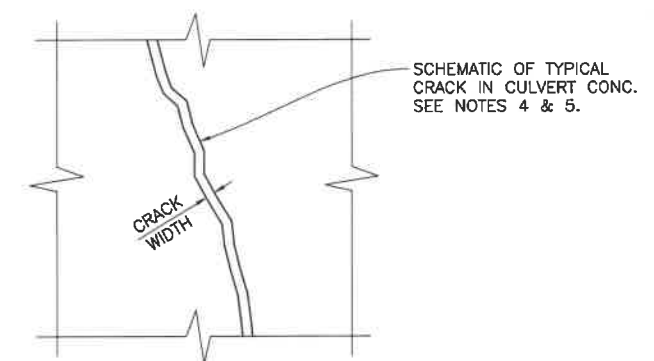
FOR INFORMATION NOT SHOWN,
 SEE SECTION B-B



**SECTION C-C
 JOINT, CRACK OR EDGE OF CONCRETE REPAIR**
NO SCALE



**SECTION D-D
 MISCELLANEOUS SPALL REPAIR**
NO SCALE



CRACK DETAIL
NO SCALE

THE CONTRACTOR SHALL VERIFY ALL CONTROLLING FIELD DIMENSIONS BEFORE ORDERING OR FABRICATING ANY MATERIAL.