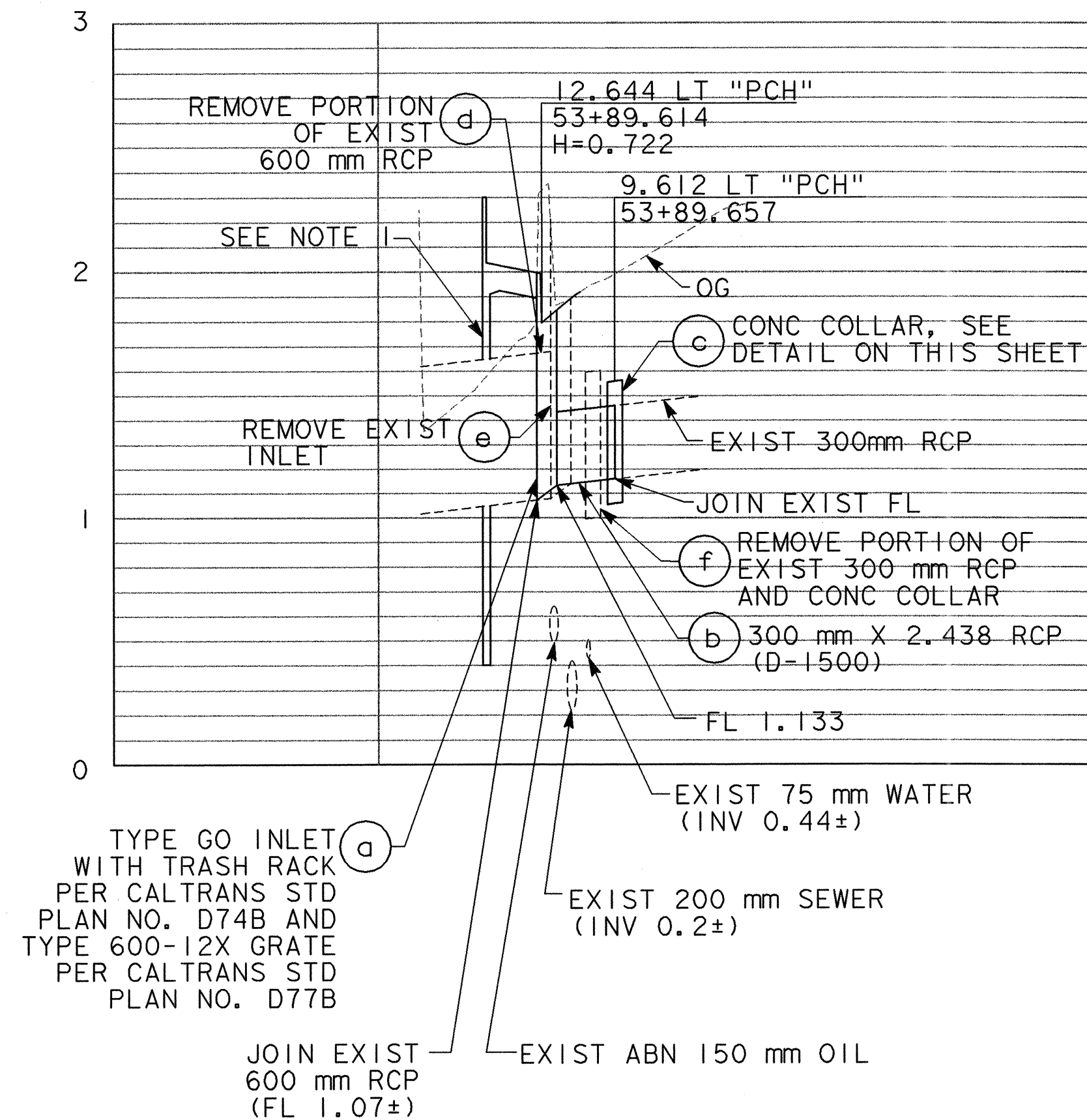


03/10/2004 11:34:24 AM dsu

STATE OF CALIFORNIA - DEPARTMENT OF TRANSPORTATION	DESIGN OVERSIGHT	CALCULATED/ DESIGNED BY	DATE	REVISED BY				
	XXXXXX	CHECKED BY		DATE REVISED				

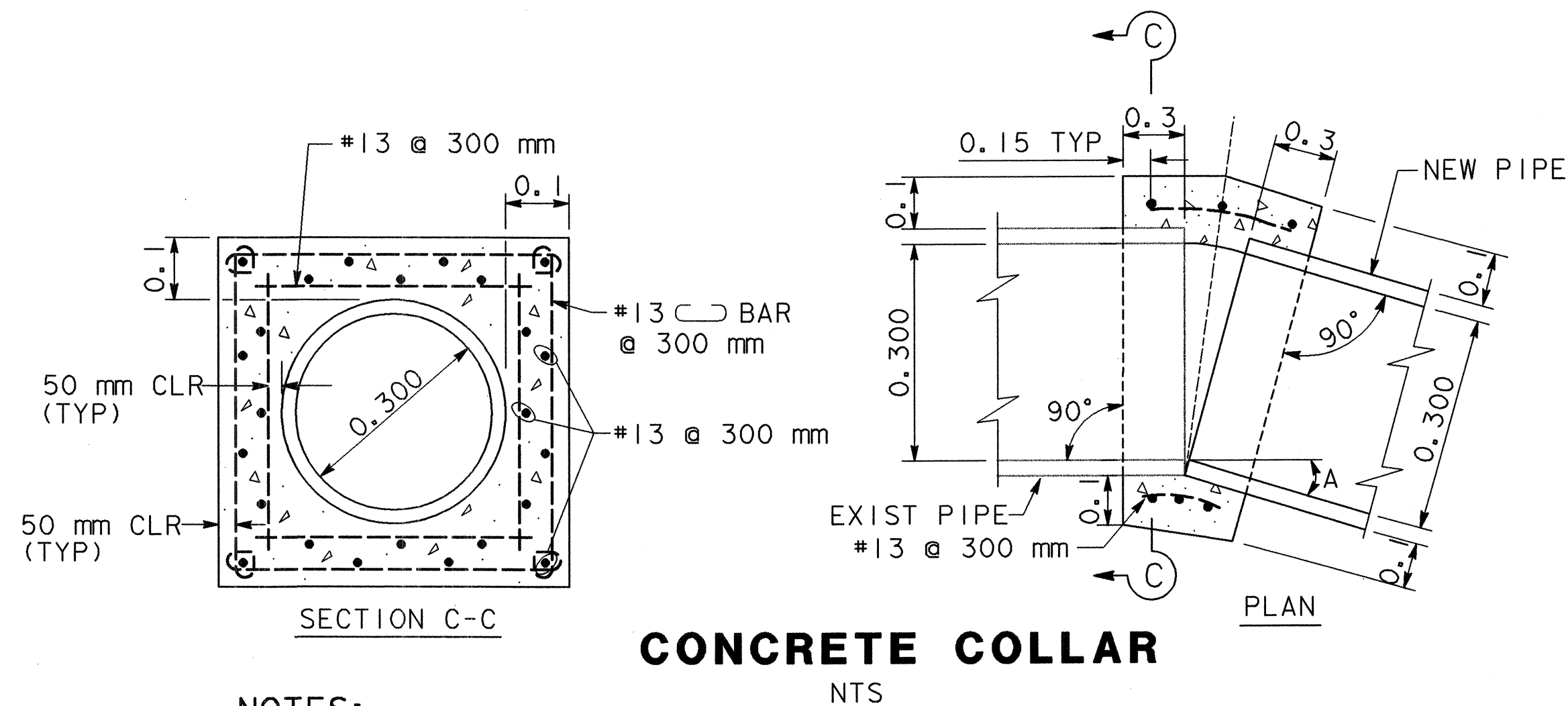
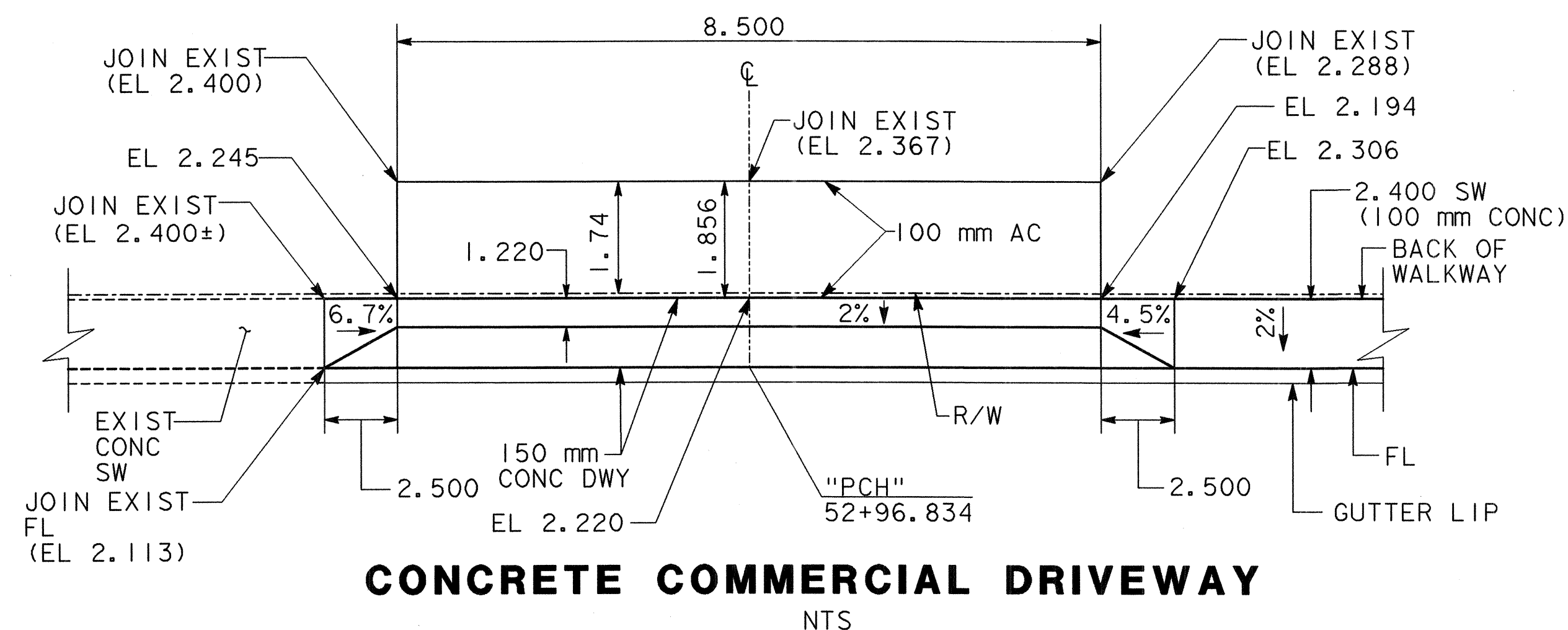


**DRAINAGE SYSTEM No. 1**

SCALE: HORIZ 1: 200  
VERT 1: 20

NOTE:


1. WRAP EXIST RCP WITH 13 mm EXP JT FILLER PRIOR TO PLACING CUT-OFF WALL

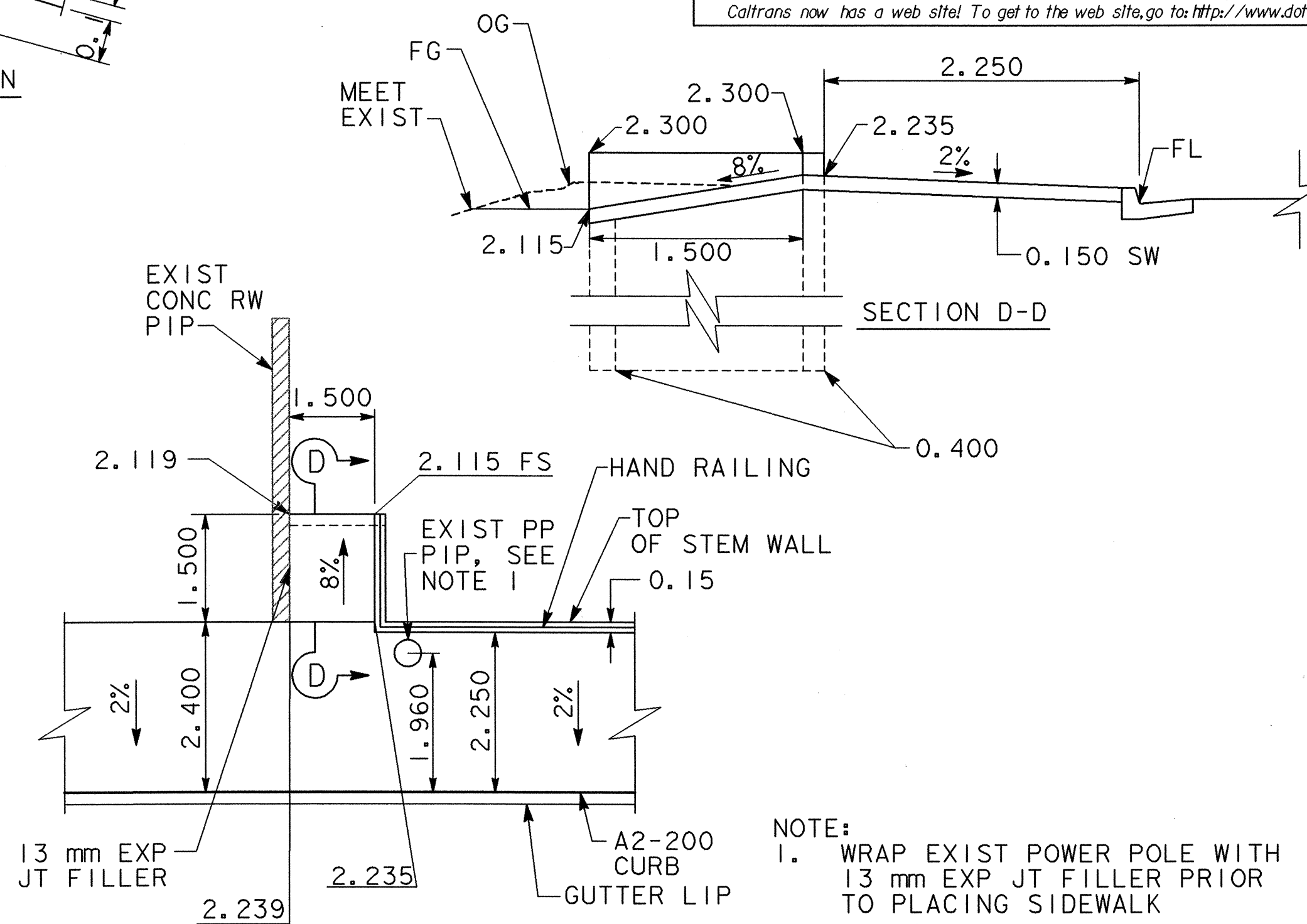


## CONCRETE COLLAR

NTS

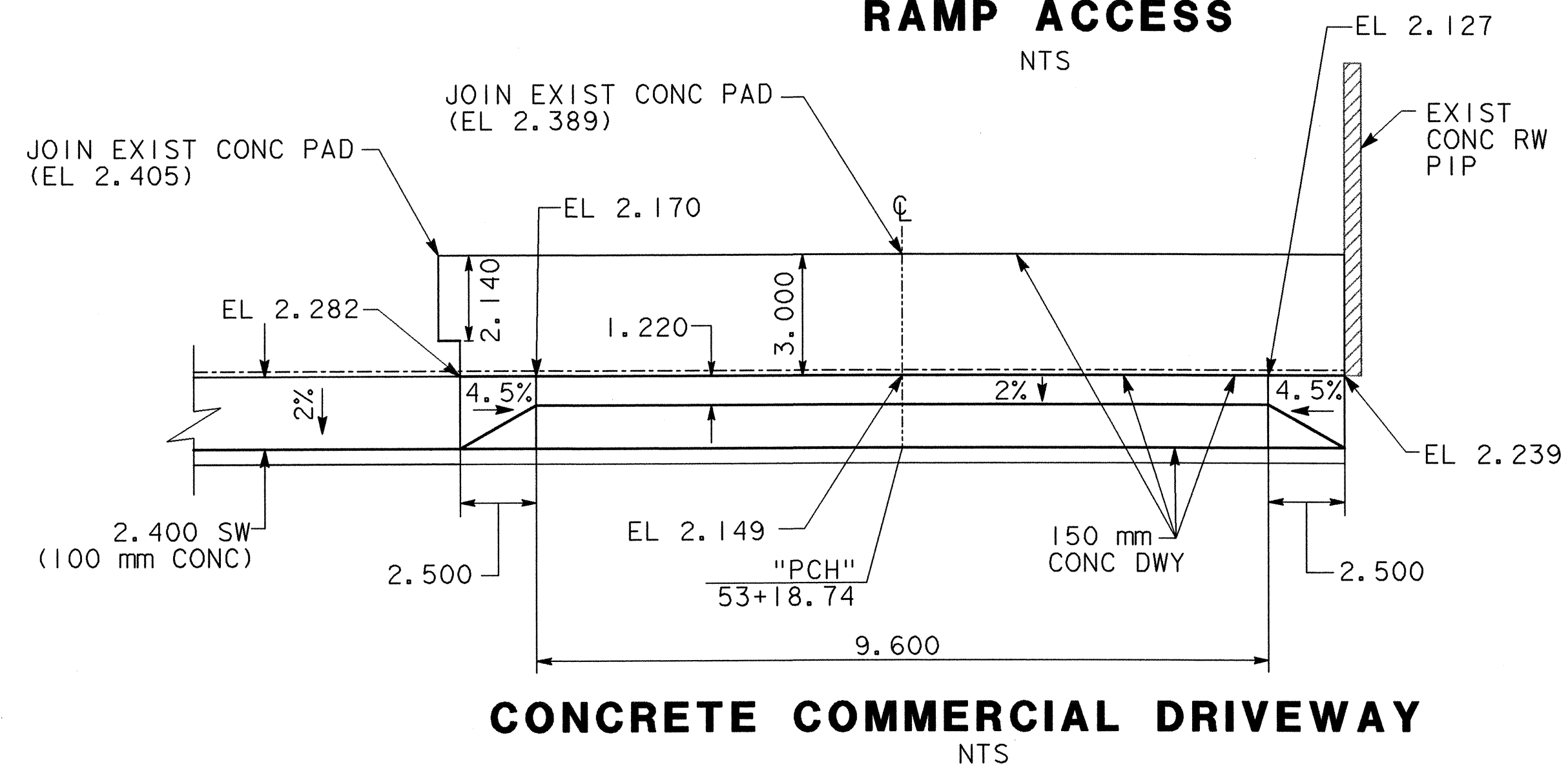
NOTES:

1.  BARS TO BE HOOKED AROUND LONGITUDINAL REINFORCEMENT. ROTATE BARS AS NECESSARY.
2. JOIN PIPES AT INVERTS.
3. CONCRETE COLLAR AS SHOWN IS ADEQUATE FOR UP TO 12.0 m OF FILL.



## RAMP ACCESS

NTS



## CONCRETE COMMERCIAL DRIVEWAY

NTS

ALL DIMENSIONS ARE IN  
METERS UNLESS OTHERWISE SHOWN

## CONSTRUCTION DETAILS & DRAINAGE PROFILE

**C-1**

DIST	COUNTY	ROUTE	KILOMETER POST TOTAL PROJECT	SHEET NO.	TOTAL SHEETS
12	ORA	1	48.9	5	6

*Josh Carl Stone* 01-20-04  
 REGISTERED CIVIL ENGINEER

PLANS APPROVAL DATE \_\_\_\_\_

RBF CONSULTING  
 14725 ALTON PARKWAY  
 IRVINE, CA 92618

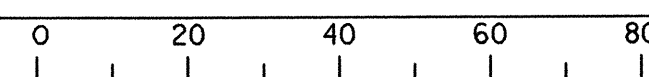
*The State of California or its officers or agents shall not be responsible for the accuracy or completeness of electronic copies of this plan sheet.*

*Caltrans now has a web site! To get to the web site, go to: <http://www.dot.ca.gov>*

A circular professional engineer seal for the State of California. The outer ring contains the text "REGISTERED PROFESSIONAL ENGINEER" at the top and "STATE OF CALIFORNIA" at the bottom, separated by two stars. The center of the seal contains the name "JOSH CARL STONE", the license number "No. 60755", and the expiration date "Exp. 12-31-04". The word "CIVIL" is written below the expiration date.

DATE PLOTTED =>	\$DATE
TIME PLOTTED =>	\$TIME

FOR REDUCED PLANS  
ORIGINAL SCALE IN MILLIMETERS



```

USERNAME => $USER
DGN FILE => $REQUEST

```

CU 12209
----------

EA 079700
-----------