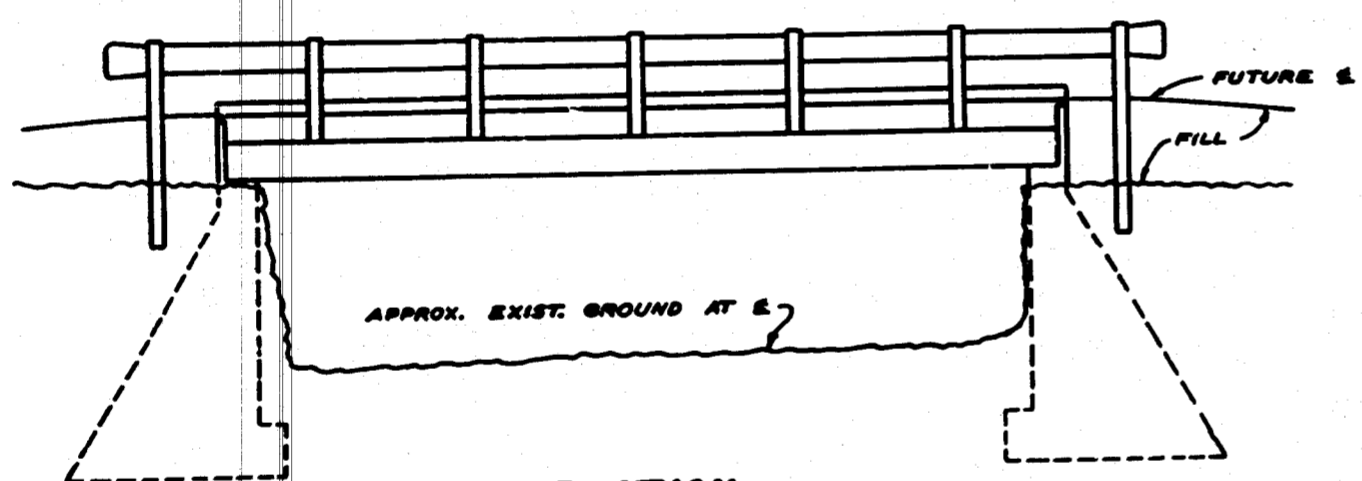
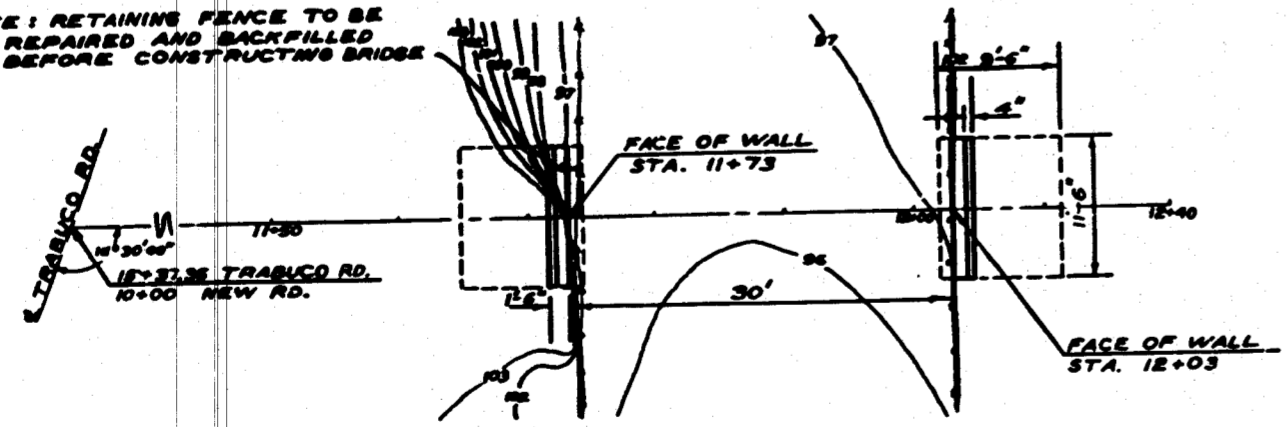


TYPICAL SECTION
SCALE 3/4" = 1'



ELEVATION
SCALE 1" = 8'

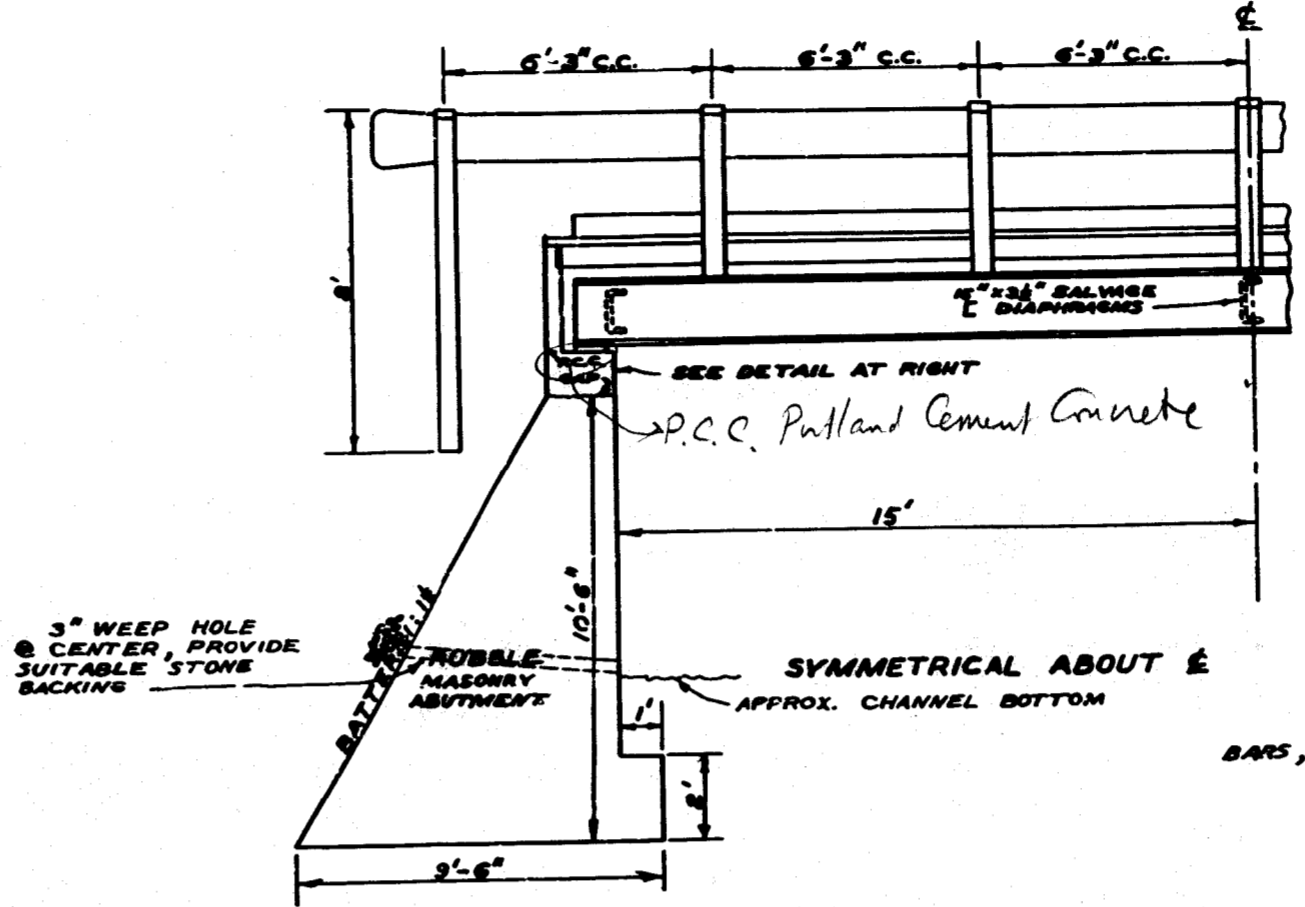
NOTE: RETAINING FENCE TO BE REPAIRED AND BACKFILLED BEFORE CONSTRUCTING BRIDGE



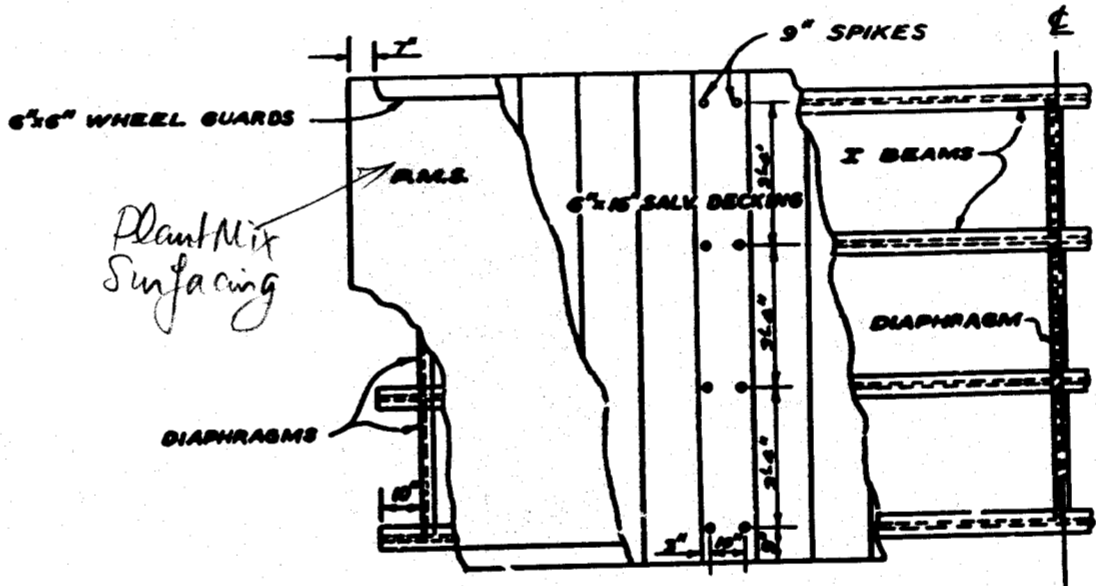
FOUNDATION PLAN
SCALE 1" = 10'

B.M. = 1
"0" ON NW COR. RED CEMENT PARKING AREA IN FRONT OF FIRE HOUSE
ELEV. 100.00 (ASSUMED)

B.M. = 3
SPIKE ON SO. SIDE 4' OAK TREE
35' RT. STA. E+10
ELEV. 104.38



LONG. SECTION
SCALE 1" = 3'



DECK PLAN
SCALE 1" = 3'

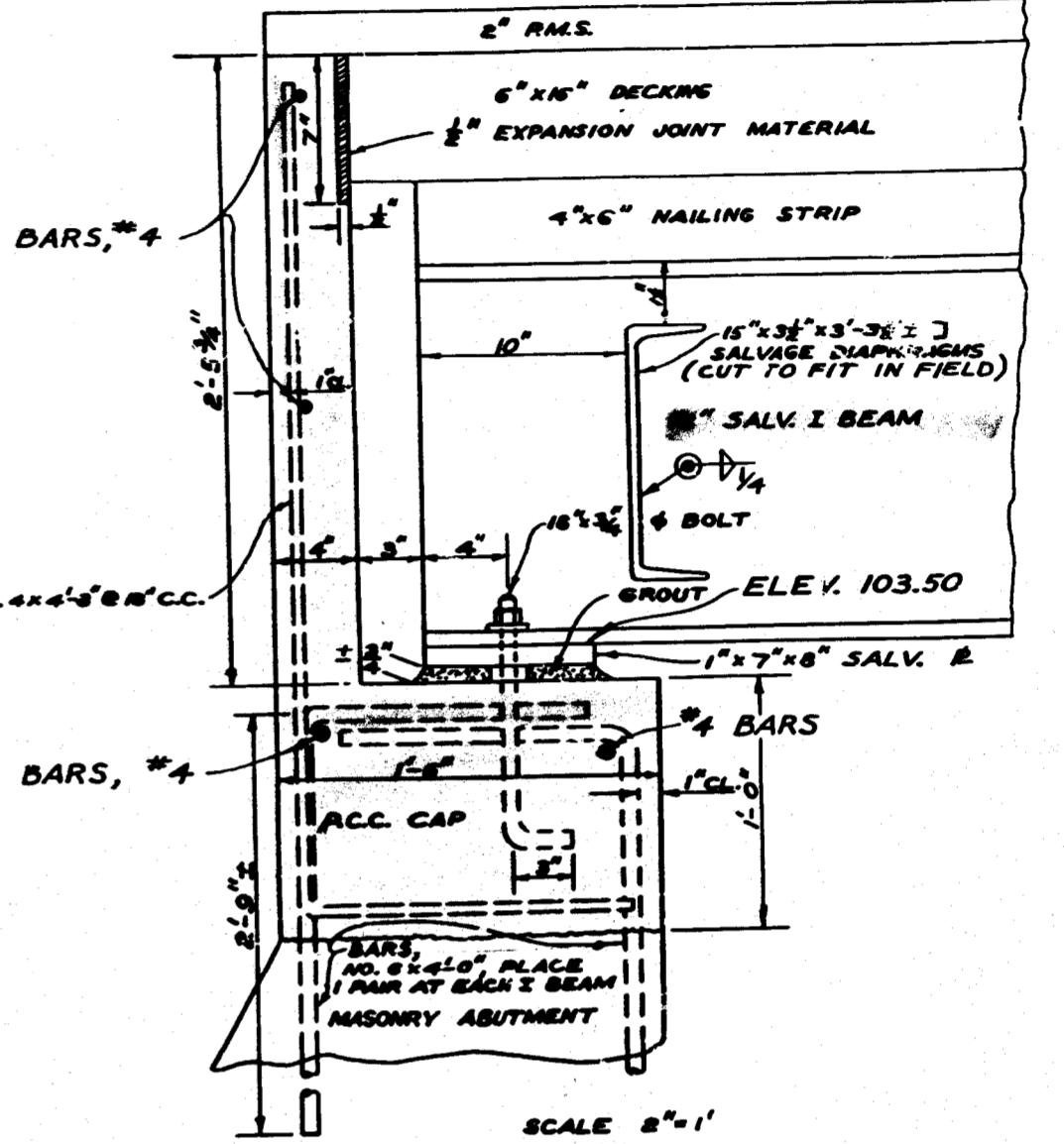
NOTES

DESIGN: AASHTO DATED 1963

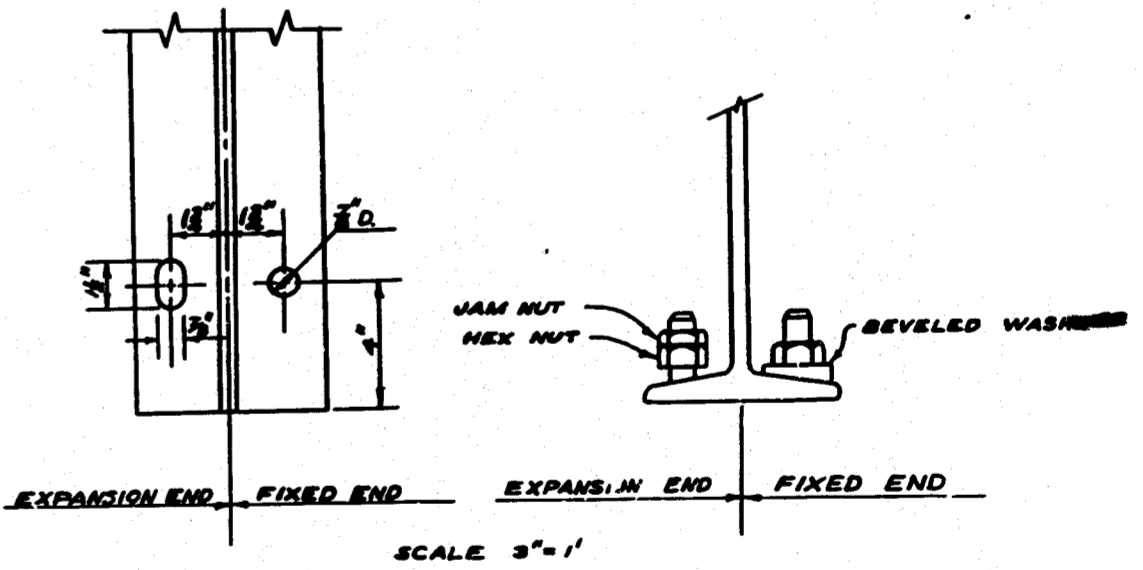
CONSTRUCTION: STANDARD STREET AND HIGHWAY SPECIFICATIONS COUNTY OF ORANGE DATED 1951

DESIGN DATA:
LOADING: H-20
STRESSES: $f_c = 18000$ PSI $f_s = 12000$ PSI

GENERAL:
ALL CONCRETE SHALL BE CLASS "A"
MORTAR SHALL CONSIST OF ONE PART BY VOLUME OF PORTLAND CEMENT TO TWO PARTS OF CLEAN SAND; HYDRATED LIME TO THE EXTENT OF 3% BY VOLUME OF THE CEMENT MAY BE ADDED TO THE MORTAR
ELEVATION OF TOP OF ALL MASONRY BEARING PLATES = 103.50



SEATING DETAILS
SCALE 2" = 1'



SCALE 3" = 1'

ITEM	QUANTITY
R.C.C.	2 CU. YDS.
MORTAR	7 CU. YDS.
RUBBLE	47 CU. YDS.
STRUCTURE EXCAV.	118 CU. YDS.
STRUCTURE BACKFILL	64 CU. YDS.
STRUCTURAL STEEL	7860 LBS.
TIMBER	2356 SQ. FT.
GUARD RAIL	83 LIN. FT.
R.M.S.	32 YDS.
PAINT STEEL	311 SQ. FT.

ORANGE COUNTY ROAD DEPARTMENT
GENERAL PLAN AND DETAIL

O'NEILL PARK BRIDGE OVER HICKEY CREEK

BRIDGE NO. H1-10

APPROVED: *[Signature]*
ROAD COMMISSIONER

SCALE AS NOTED DATE APRIL 1965 SHEET 1 OF 1

#14523 1956

Bridge #H1-10
O'Neill Park Bridge
over Hickey Creek
Sheet 1 of 1
Red: [unclear] Scale as noted
Linen

UNAPPROVED
JUL 1 1965

HI-10.
O'NEILL PARK BR.
OVER HICKEY CR.
Thm: 863-B7