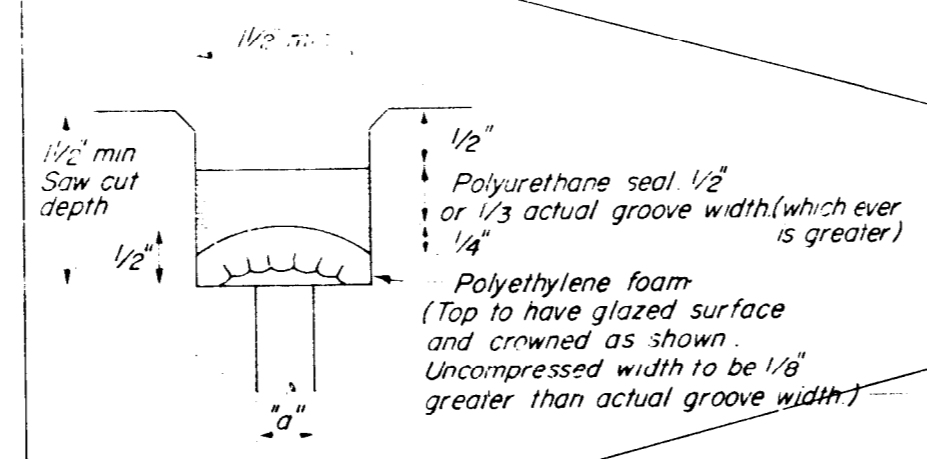
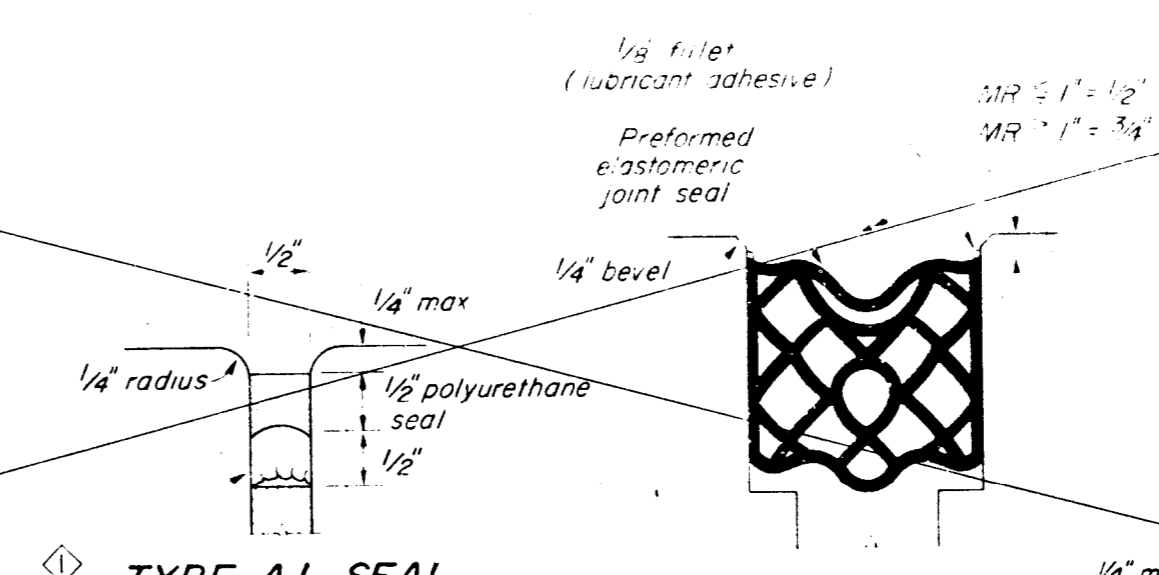


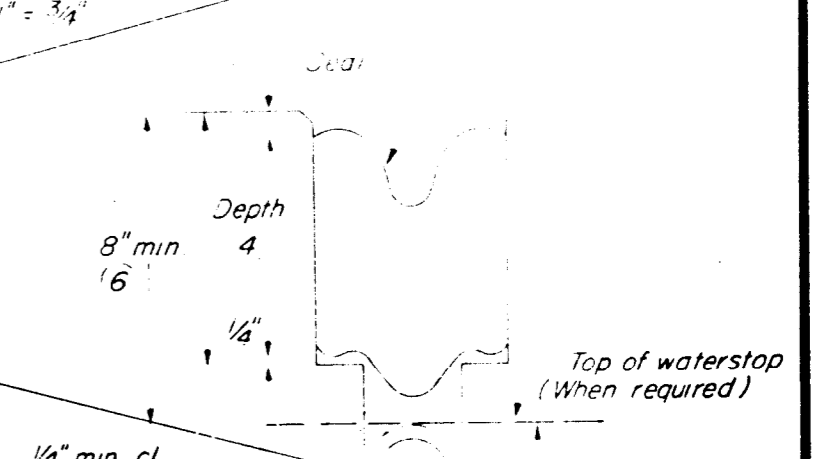
**FORMING DETAILS**



**TYPE A SEAL**

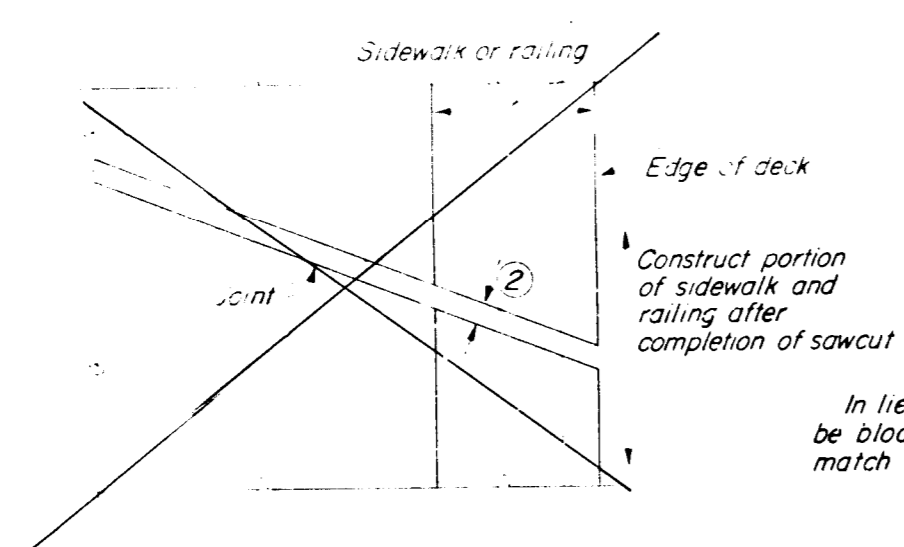


**TYPE A1 SEAL**

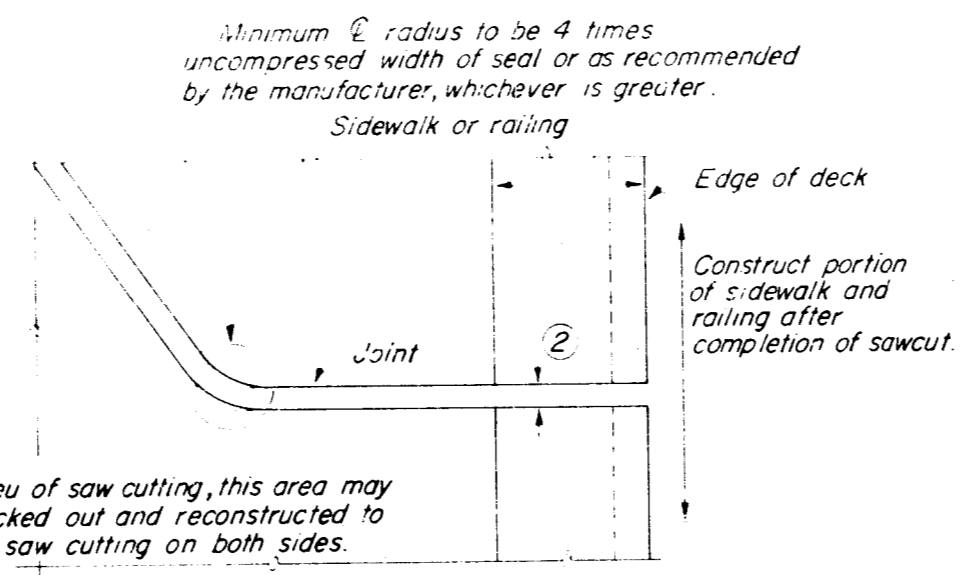


**TYPE B SEAL**

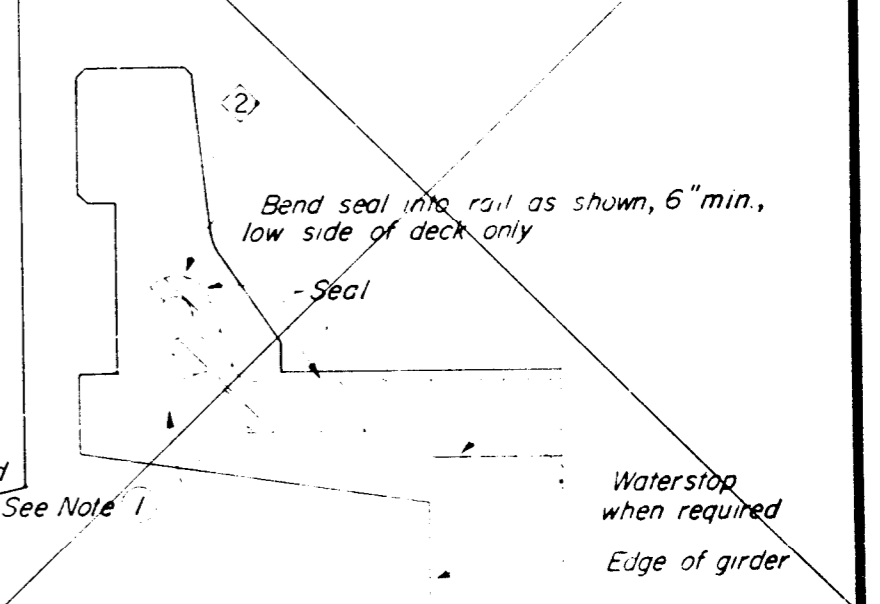
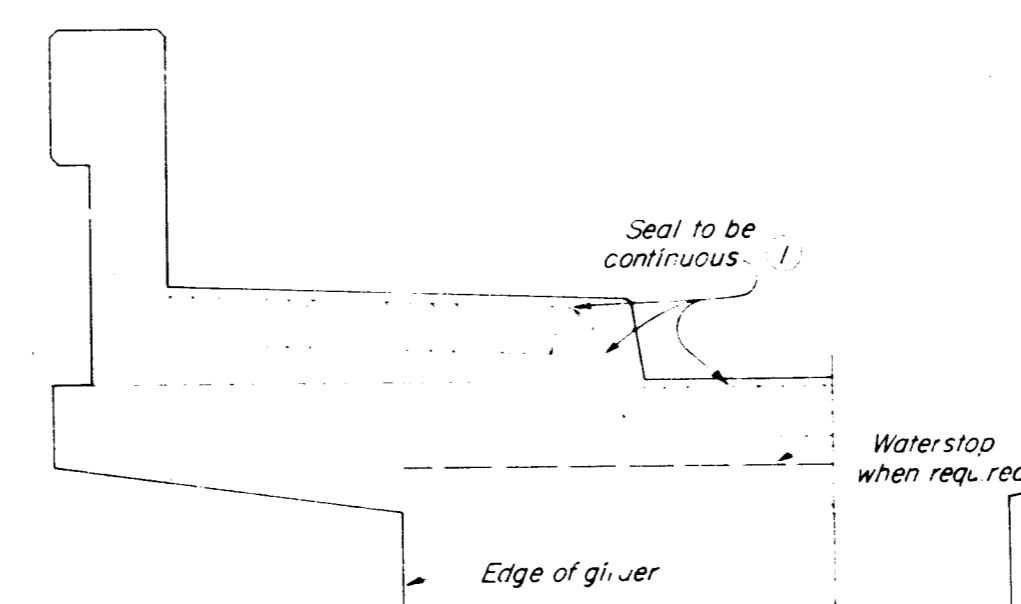
**TYPE B JOINT SEAL IN MINIMUM WIDTH POSITION (W<sub>2</sub>)**



**PLAN OF JOINT**



**PLAN OF ANGLED JOINT**

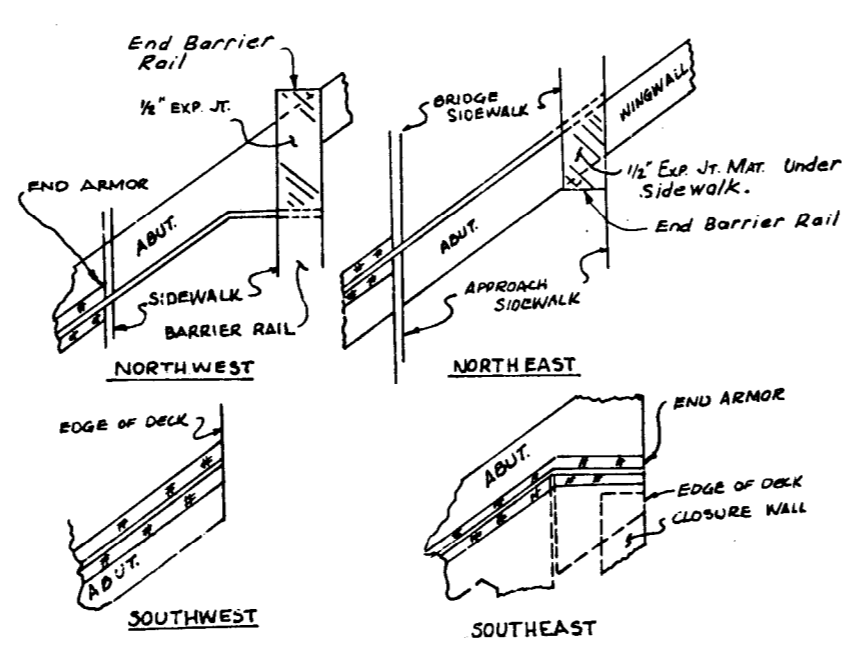


Note: Type "B" Seal shown. Type "A" seals to conform to the general path of seal shown.

**RAILING & SIDEWALK JOINT SEAL DETAILS**

**DIMENSIONS "a" OF JOINT REQUIRED**

Movement Rating (M.R.)	Bridge Type	"a" Dimension		
		Deck	Concrete	Placed
5	All except CIP/PS	1 1/2"	1 1/4"	3/4"
	CIP/PS	1 1/4"	1"	1/2"
2"	All except CIP/PS	1 1/4"	1"	1/2"
	CIP/PS	1"	3/4"	1/2"
1 1/2"	All except CIP/PS	1"	3/4"	1/2"
	CIP/PS	3/4"	1/2"	1/2"
1"	All except CIP/PS	3/4"	3/4"	1/2"
	CIP/PS	1/2"	1/2"	1/2"
1/2"	All except CIP/PS	3/4"	3/4"	1/2"
	CIP/PS	1/2"	1/2"	1/2"



**DECK CORNER DETAILS**  
N.T.S.

**NOTES:**

- 1 Make smooth cuts from the bottom of seal to 1/2" clear of top leaving at least one complete cell between the top of the cut and top of the seal. When necessary cut back of seal to clear conduit
- 2 Opening in rail and sidewalk to be constructed to the formed width of formed deck joint
- 3 Formed groove widths shall be as ordered by the Engineer.
- 4 Depth of Groove: Type A - Depth to be shown above.  
Type B - Depth to be equal to or greater than the depth of seal measured along the contact surface, when compressed to minimum width position (W<sub>2</sub>) plus dimensions shown above.
- 5 MR (movement rating) = 1".
- 6 Other depths must be approved by the Engineer.

#12300  
McFADDEN AVENUE  
BRIDGE SA-26.4  
REDUCE 24x11  
SHEET 10 of 18  
LINEN

ORANGE COUNTY ROAD DEPARTMENT

McFADDEN AVENUE BRIDGE WIDENING  
OVER THE  
SANTA ANA RIVER

JOINT SEAL DETAILS

SCALE AS NOTED

SHEET 10 of 18

ORIGINAL SCALE IN INCHES  
FOR REDUCED PLANS

0 1 2 3 CU  
NO

DR.# 13 (12300)